

## Right Isosceles (45-45-90)

The right triangle 45-45-90 is **very common** and you will see it on the test.

It is important you know the ratios of the angles, they will only give you one side and then you need to find the rest.

**The ratio of the sides**

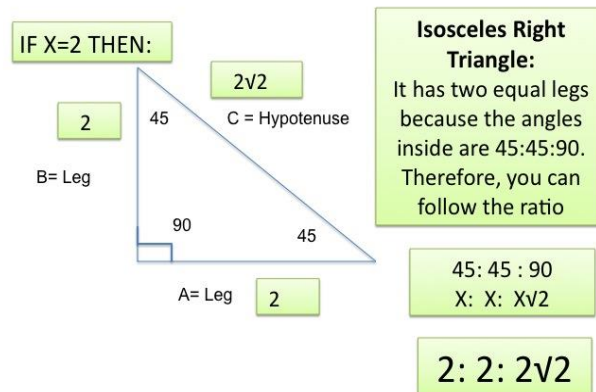
**45:45:90**

**X:X:X√2**

For example:

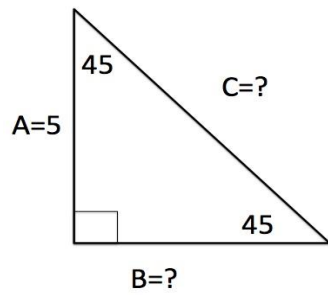
If one of the sides is 2 units, then you can find the rest of the sides by using the ratio.

### Special Right Triangles

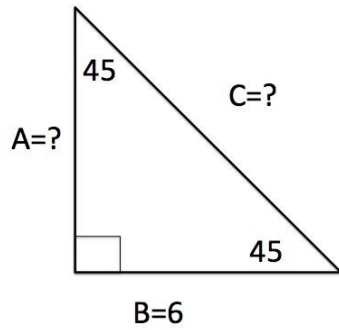


Let's Practice

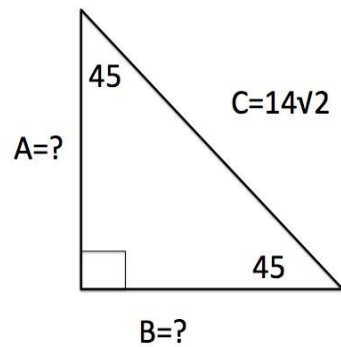
1) Find B and C



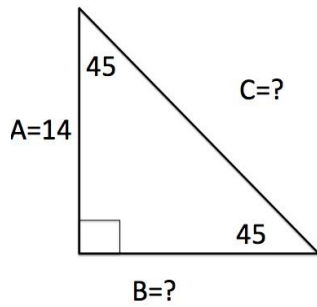
2) Find A and C



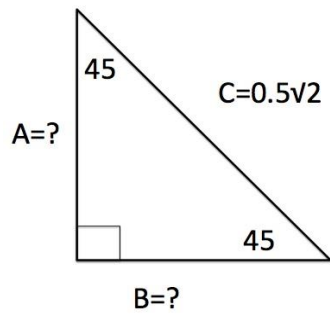
3) Find A and B



4) Find B and C



5) Find A and B



Let's check your answers:

- 1)  $B=5$   $C=5\sqrt{2}$
- 2)  $A=6$   $C=6\sqrt{2}$
- 3)  $A=14$   $B=14$
- 4)  $B=14$   $C=14\sqrt{2}$
- 5)  $A=0.5$   $B=0.5$