



Snoopy Gems

Volume 46 Number 3 March 2020
Mississippi Gulf Coast Gem &
Mineral Society Inc.



Email: mgcgms@bellsouth.net

MGCGMS Established in 1974

Presidents Message

Hello Members,

We will be awarding the club scholarships this month. Late, I know, but we'll get it done. If you don't want to be considered for the scholarships please make sure you call, email or otherwise inform us of your decision.

The April mini show is coming up P.D.Q., so if you want to have a table at that you need to let us know starting now. Applications will be available at this month's meeting. Even if you aren't selling at the show, please think about helping in other ways like helping to promote new membership or demonstrating.

Finally, we had a board meeting and there may be a few things that happened there of interest to the club. We'll go over that at the general meeting this month.

Patrick Barrett
MGCGMS President

March Workshop:

Workshop Project #1:

David Cook will be teaching the third session of a 4-session wire wrapping workshop for beginners. This course will cover the basics: types of wire, tools, sources of materials, bracelet making and cabochon wrapping.



Workshop Project #2:

Materials:

9pcs. Chinese Rondelle 8x6mm (Blue Alabaster)
8pcs. Swarovski Pearl Round 6mm (White)
36pcs. Preciosa Czech Bicone 4mm (Crystal Mar-
ea 2x) Color A

16pcs. Swarovski bicone 4mm (Air Blue Opal)
Color B

11/0 Seed Beads (Miyuki Galvanized Silver
#181) Color A

11/0 Seed Beads (Miyuki Matte Metallic Steel
Blue Luster #2030) Color B

Monofilament Beading Thread 0.25mm
Fireline Conditioner

Jumpring & clasp

2 Needles

2 pliers



Machines: As always, we will have the club machines available for metal & gemstone testing, gemstone cutting, and cabling.

Claire Martin
Workshop Chair
228-366-3612
ladycomfms@yahoo.com

<http://www.mgcgms.org>

PO Box 857 Ocean Spring, MS 39566



Meeting Minutes:

GULF COAST GEM & MINERAL SOCIETY

February 8, 2020



Called to order: 12:50 pm

Members in Attendance: 43

Meeting: President Patrick Barrett called the meeting to order. Eight new members were welcomed to the club: Sheena Anderson, Kati Crevier, Branka DeFranco, Buddy Hebert, Michelle Hebert, Frey Paquin, Toni Paquin, and Devin Picchi.

Minute to Accept: No additions or corrections to January minutes. Motion to accept made by Barbi Beatty and seconded by Mark Daynes. Motion carried.

Treasury Report: Barbi Beatty gave the report and an accounting of the proceeds from the club's November 8-10, 2019 annual gem and mineral show. Vicki Reynolds moved that the treasurer's report be accepted, Barbara Saavedra seconded. Motion carried. John Guglik asked if we have the rent for the venue set aside for this year's annual show. The answer was yes.

General Announcements: Silver, gold filled, and copper wire is available for purchase.

Reports: Workshops: 15 people attended David Cook's wire wrapping workshop. Joni Arias and Claire Martin assisted. Rosalind Norvel-Daniels had 5 students in her beaded bracelet workshop

Gem Show: After show review it was decided the Sluice need to be re-evaluated for booth fee verses shared income. Vicki Reynolds suggested we have club members help vendors with loading and unloading for the show if they need it.

Spring Mini Show: Members will be the sellers/vendors at this show. This is a fund raiser to help the Friends of the Library and will be on Apr 11, 2020.

Library: Liz Platt brought the library & has gem and lapidary related CD's and books available for members to check-out.

Sunshine: Get well cards will be sent to Reba and Buddy Shotts

Tools & Equipment: Vicki Reynolds mentioned the increased rate of breakdown with our cabbing machines. Equipment and stone familiarization for novice users may prevent this from happening too frequently. Replacements parts and new equipment that were previously ordered cannot be delivered unless it is paid beforehand. Vicki Reynolds also recommended that a faceting machine be available during club meetings. Patrick Barrett suggested the funds approved last year, but not yet used for a new club computer to instead be used to fund new workshop equipment.

Membership, Newsletter, Badges, etc.: If you are not receiving club information such as the Snoopy Gems (club newsletter) and meeting information, please check with Barbi Beatty to make sure e-mail address is accurate. Barbi stated all club information is sent out by email, but you can also get the information by visiting our website @ www.mgcgms.org. Badges for \$6.50 and available through Barbi. Logo patches are also available through John Guglik.

Education & Projects: Speakers for Meetings: Mark Daynes did a lecture on glues and bonding materials. He will do another presentation on bone carving at our next meeting. John Guglik discussed the difference between faceting and cabbing and gave some information about amethyst, the gemstone of the month of February.

Outside classes/ workshop programs: **Info requested from the floor:** Annual scholarship to Wildacres and William Holland will be awarded to qualifying members at the next meeting. Vicki Reynolds taught wire wrapping at the River Art Gallery.

Old Business: Annual Scholarship will be drawn at the March meeting.

New Business: Patrick Barrett and Natalie Webb will be working on to improve the security of our personal information. Barbi Beatty will upgrade our website to a secure site.

Gemstone Education: John Guglik spoke about Amethyst.

Door prizes: Michelle Hebert and Dawn Brandt were the recipients of door prizes.

Adjournment: 1:15 pm.

Report by: Aurora B. King



Happy

March

Birthday

Ray Bellande Clifford Baker Connie Boyd
Dawn Brandt Rosalind Daniels Eddie Hard
Aurora King Kathy Kincaid Harvey Marcum
Samantha Odem Lois Reahand Brad Troutman



AQUAMARINE
March's Birthstone

By: John Wright

Aquamarine is the birthstone for March and derives its name from "sea water" (i.e. the Latin terms "aqua" meaning water and "mare" which refers to the sea). According to legend, aquamarine comes from the treasure chest of mermaids and is a powerful charm for keeping you safe when at sea. On land it is suppose to have a soothing influence on the wearer and is an ideal anniversary gift, because according to tradition giving an aquamarine ensures a long, happy, and prosperous marriage. It is one of the most popular gemstones as the light to medium blue color is complimentary to most any skin tone or complexion and is highly suitable for ware with casual or formal attire. Aquamarine is characterized by many excellent features and is the inspiration for new gemstone cuts more often than any other stones.



Birthstone: March

Family: Beryl, $\text{Be Al}_2 \text{Si}_6 \text{O}_{18}$

Crystal System: Hexagonal

Birefringence: 0.004 – 0.008

Color: Various shades of blue to blue-green

Density: Normally 2.67 – 2.72 g/cm³, can be as much as 2.90 g/cm³

Hardness: 7.5 – 8, but can be fairly brittle

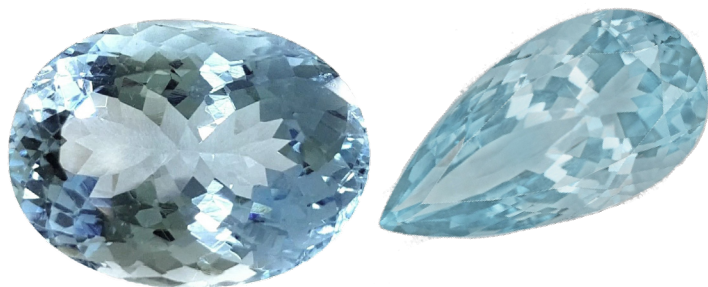
Refractive Indices: Variable 1.560 – 1.570 to 1.596 – 1.602

Cleavage: Ill-defined cleavage parallel to basal plane

Pleochroic: Weak



Aquamarine is classified as a precious gemstone and while not as expensive as some of the others in this category due to its relative abundance and widespread occurrences, its beauty and breathtaking brilliance make it one of the most popular. When compared to the much more expensive emerald, another member of the beryl family, the aquamarine's color is usually more evenly distributed or uniform, frequently found free or almost free of inclusions, and in much larger crystals. With the exception of diamonds the crystalline character of aquamarines is seldom found in other natural occurring precious or semi-precious gemstones. I attribute this to the crispness of the light blue shades combined with the velvety sheen of the beryl family.



Iron is the substance responsible for the color of aquamarine, and the shade of blue range from almost colorless (just a hint of blue) to a bright medium blue with some stones typically having a slightly greenish hue. The stones with the more intense color have the higher value with other factors such as no or very limited inclusions, clarity, and size/weight.



Aquamarine are found usually in small deposits widely dispersed all over the world including deposits here in the United States (western North Carolina). Major deposits found in Brazil provide most of the uncut rough sold in the world market, but other important sources include Nigeria, Madagascar, Mozambique, the mountains along the Pakistan and Afghanistan border, and three areas in Russia.

Aquamarines are referred to among professionals by names normally associated with the areas where they were found and are identified by their distinguishing color shades. An example is the rare intensely deep blue "Santa Maria" aquamarines found at the Santa Maria de Itabira mine in Brazil. Similar ones found in Africa are named "Santa Maria Africana" which makes sense. It seemed like a pretty good system of identification to me, but then someone had to go and name a particular color "Martha Rocha" in honor of a beauty queen.

Who Is Martha Rocha and Why Is Her Name Forever Linked with The Aquamarine?

Back in 1954, Maria Martha Hacker Rocha was a statuesque 18-year-old Brazilian beauty queen. After winning the title of Miss Bahia in her home state, she went on to become the first Miss Brazil and was the runaway favorite to win the Miss Universe pageant.



Although she eventually earned runner-up status to American Miriam Stevenson, Rocha won the hearts of fans all over the world. They were taken by her beauty, class and captivating blue eyes.

Back in Brazil, gemstone merchants were trying to come up with names to describe the various color nuances of aquamarine, the blue member of the beryl family. The rare, intense blue aquamarines from the Santa Maria de Itabira mine in Brazil were called "Santa Maria." Similar-color aquamarines from Mozambique and other countries in Africa were named "Santa Maria Africana." Lighter hues were named after the Brazilian state where they were mined, specifically "Espirito Santo."

Right about the same time as Rocha was competing on the world stage, an incredible aquamarine crystal was found on a farm near Teofilo Otoni, Brazil. It weighed approximately 74.5 pounds and the color was so rich, so intense that the Brazilian gem dealers needed to distinguish it from the rest. They named it "Martha Rocha" as a special tribute to the Brazilian beauty queen with the captivating clear blue eyes.

Even today, gem experts use "Martha Rocha" as a classification of tone and intensity when rating the finest-color aquamarines. Aquamarines are mined in many countries, including Nigeria, Madagascar, Zambia, Pakistan, Mozambique and the U.S., but most of the finest-quality gemstones still come from Brazil.

Source: thejewelersblog



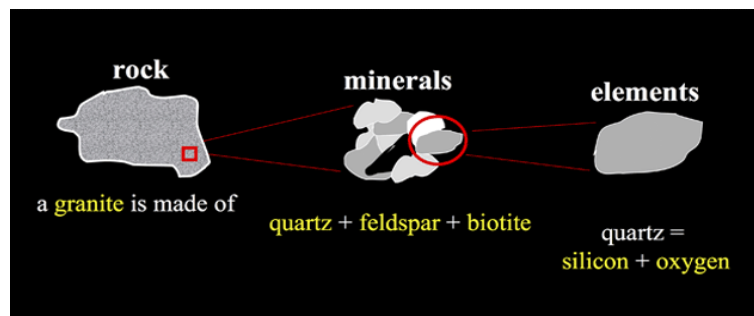
The Difference Between Rock, Mineral, Ore, & Metal

Rocks- A rock is made up of 2 or more minerals. You need minerals to make rocks, but you don't need rocks to make minerals. All rocks are made of minerals. For example, granite is a mixture of the mineral's quartz, feldspar, and biotite. Some rocks made of only one mineral like Limestone made of calcite

Minerals- A mineral is composed of the same substance throughout. There are more than 3000 different minerals in the world. Minerals are made of chemicals - either a single chemical element or a combination of chemical elements. Difference between rock and mineral- A rock is made up of 2 or more minerals, whereas a mineral is composed of the same substance throughout.

Ore- A mineral occurring in sufficient quantity and containing enough metal to permit its recovery and extraction at a profit. Or, a mineral or an aggregate of minerals from which a valuable constituent, especially a metal, can be profitably mined or extracted is an ore.

Metal- An alloy of two or more metallic elements. Therefore, Rocks have minerals, which in large concentration are called ores and these are mined for metals!



Fun Facts About Rocks:

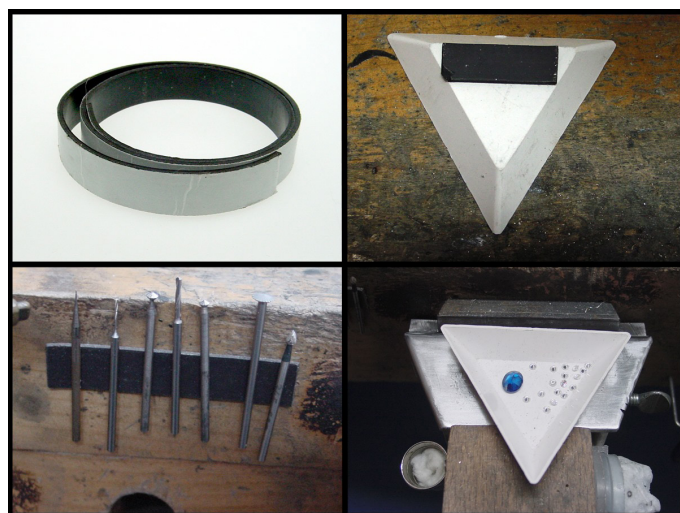
There are many interesting and fun facts about rocks and minerals. Here are some of them: The oldest rocks on Earth are the Igneous rocks which are formed due to volcanic activity within the Earth. Weathering results in the erosion of many rocks and minerals on Earth. Amongst minerals, the most commonly occurring one is quartz. Quartz is further classified into various types such as smoky quartz, rosy quartz, etc. Pumice is one rock that is igneous and is formed when lava solidifies. It is also the only rock known to float. Gemstones are quite popular for the fashion appeal they have. They are considered to be minerals and not rocks. The most popular gemstone is Ruby. During the Earth's formation process, the very first type of rock that was formed was an igneous rock followed by sedimentary rocks and then metamorphic rocks. Sedimentary rocks are often found containing the fossil remains of plants and animals. All rocks go through the rock cycle where they are constantly eroded and transformed from one rock type to another. Beryl is a mineral

that in its pure form is colorless. Green Beryl's are more commonly known as Emeralds. The word Emerald has its roots in the Semitic language and the ancient Indian Sanskrit language. It is derived from the Semitic word izmargad or the Sanskrit word markata. A diamond is a mineral that is known to be the hardest substance known to man. Feldspars make up over 50% of the Earth's crust. The properties used to identify minerals include luster, hardness, color, streak, cleavage, crystal shape and magnetism. Marble is formed from carbonate rock, mostly from limestone. The Taj Mahal in Agra, India, built nearly 400 years ago and known to be one of the seven wonders of the world was made completely out of marble. The rock Lapis Lazuli is a treasured gemstone today which in the ancient times was used by the Egyptians as eye shadow. Ancient Mesopotamians used the gemstone turquoise to make beads. This occurred nearly five thousand years ago, long before the birth of Christ. Rocks that appear to have a reddish hue on the side of the roads are believed to be rusted. These rocks may be billions of years old. Read more at <https://www.geologyin.com/>



BENCH TIPS

This strip of magnet has adhesive on one side and can be purchased at any Hobby Store. I placed a strip of it on my bench next to my bench pin. Then while setting stones that require changing burs and drill bits I can place the needed burs on the strip and can easily retrieve them when needed. I also placed a small strip of the magnet on the bottom of a stone tray. This securely holds the stone tray on the metal portion of my bench mate to conveniently keep the stones close by without fear of spilling them.



For more Bench Tips go to: <http://benchmagazine.com/benchtips>

Welcome

Ms. Gulf Coast Gem & Mineral Society

Proudly Presents its Annual Picnic

Come join the fun!

April 4, 2020 **SATURDAY** 11 AM to 4 PM

LUNCH SERVED AT NOON

Seashore Methodist Assembly

1410 Leggett Drive Biloxi, Ms. ***Under The Pavilion***

Hamburgers, Hot Dogs, & Drinks provided



Don't forget to bring a guest!



*** * * No tobacco or alcoholic beverages allowed on premises * * ***

RSVP: Lisa 228-216-4684 or lapidaryarts@hotmail.com

COME JOIN OUR PICNIC AND HAVE SOME FUN!

Seashore Methodist Assembly Pavilion

Physical Address: 1410 Leggett Drive, Biloxi, Ms. (for GPS)

*****We will have signs on Hwy. 90 and maybe some balloons. *****

Traveling from Mobile: Travel I-10 West crossing into Ms.

Merge onto MS-15 S via Exit 46A on the left toward Biloxi/Keesler AFB.

MS-15 becomes I-110 S.

Merge onto Beach Blvd/US-90 West via Exit 1B on the left toward Keesler AFB.

Travel West on US-90 for about 1.5 Miles (about 3 minutes).

Once you pass the White House Hotel on the corner of Hwy. 90 & White Ave. (red light intersection) you are 1/2 mile from Chalmers Drive.

Turn right on Chalmers Drive.

Traveling west from Ocean Springs: Once you pass the White House Hotel on the corner of Hwy. 90 & White Ave. (red light intersection) you are 1/2 mile from Chalmers Drive.

Turn Right on Chalmers Drive.

If you reach Veterans Ave. where “Pink Souvenir Shop” is and “Slap Ya Mamma Bar-B-Que Shop” you have gone too far.

Traveling East on Hwy. 90: Its exactly 3 miles east of the Ms. Gulf Coast Coliseum. Once you pass the large “Pink Souvenir Shop” on right (beach side) at Veterans Ave. you are 1 mile from Chalmers Drive. If you get to the next red light where the White House Hotel is located you have gone too far.

(Do not turn in where the cement entrance says “Seashore Oaks”. It’s the next street over.)

Turn left on Chalmers Drive.

Once you turn on Chalmers Drive:

Travel maybe 140 feet and you will see a two-story green building (Police Academy).

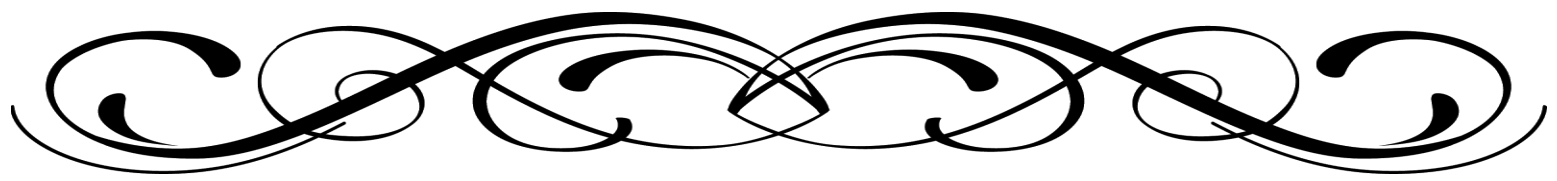
Turn left in front of the green building (Police Academy) this is Leggett Drive.

On your right side: Go pass the “Casey Center” and “Office”. The pavilion is just pass the office.

You can see the pavilion from the beach. We will have a beautiful view and a nice cool breeze.

This facility is right on Hwy. 90 but you will travel about 300 feet total to get to the pavilion once you turn off Hwy. 90.

If you get lost, call us at 228-216-4684 (Lisa), or 228-238-9900 (Barbi).



Upcomming Gem and Meneral Shows

**March 6th, 7th, and 8th,
2020 Live Oak, FL**

admission: \$3/day or \$5 weekend
pass

Southeast Federation of
Mineralogical Societies (SFMS)
SFMS Rockhound Round-Up - 2nd
Annual

Julian Smith Casino, 2200 Broad St.
Augusta, GA

Spirit of Suwannee Music Park
Live Oak, FL
3076 95th Drive, Live Oak, FL
32060
(386) 364-1683
www.musicliveshere.com

Member Display Cases, Lapidary
Demonstrations, Educational
Resources, Hourly Door Prizes,
Treasure Dig, Grab Bags, Geode
Sales & Cutting, Gem Panning and
Grand Door Prize.

Dealers selling: Gold, Silver, Fine
and Everyday Jewelry, Loose
Gemstones, Cabochons, Crystals,
Minerals, Fossils, Meteorites,
Treasures, Beads and More.

Old Fashion Rock Swap
Quarterly SFMS Meeting
All buying is open to the general
public.

Sponsored by:

March 8–10, 2020
31st Annual Aiken-Augusta
Gem, Mineral & Fossil Show

Aiken Gem, Mineral & Fossil
Society <http://www.aikengmfs.org>

Augusta Gem and Mineral Society
<http://agams.club>

Fri & Sat 10–6 / Sun 10–5

Show Chairman: Richard McNutt

Kids under 12 FREE with one Adult

2nd Annual SFMS Rockhound Roundup March 6-8 2020



Hosted by Southeast Federation of Mineralogical Societies, Inc.

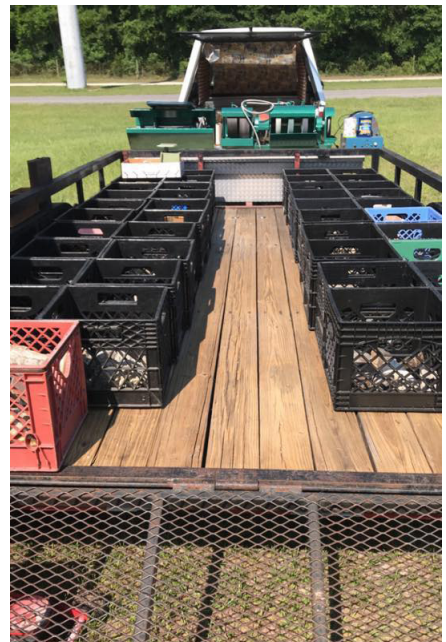
Mar 6 at 8 AM – Mar 8 at 5 PM EST

Spirit of the Suwannee Music Park 3076 95th Dr. Live Oak, Florida 32060

Space available to all members of the Southeast Federation affiliated Clubs. Applications will be accepted until all spaces are filled. All Visitors welcome for an old fashioned Roundup and Rock Swap. Additional information and applications will be available on the SFMS website and facebook page:

<http://www.amfed.org/sfms>

<https://www.facebook.com/Southeast-Federation-of-Mineralogical-Societies-317959434999844/>



We always welcome new members!



Date _____ Mississippi Gulf Coast Gem and Mineral Society

http://www.mgcgms.org		Application for Membership
Individual: \$16.00	Individual +1 relative Same Address: \$20.00	Junior Under 18: \$6.00
Name: _____		Cell: _____
Name: _____		Cell: _____
Address: _____		Home Phone. _____
City: _____		
State: _____	Email 1: _____	
Zip: _____	Email 2: _____	
Members Birthdays		
Adult: _____	Birthday M/D: _____	
Adult: _____	Birthday M/D: _____	
Junior: _____	Birthday M/D/Y: _____	
Junior: _____	Birthday M/D/Y: _____	
Please Check All Applicable Interests		
<input type="radio"/> Beading	<input type="radio"/> Cabbing	<input type="radio"/> Jewelry Making
<input type="radio"/> Chain Mail	<input type="radio"/> PMC	<input type="radio"/> Lapidary
<input type="radio"/> Field Trips	<input type="radio"/> Faceting	<input type="radio"/> Minerals
<input type="radio"/> Fossils	<input type="radio"/> Wire Wrapping	<input type="radio"/> Silver Smithing
<input type="radio"/> Others: _____		
How did you hear of us? _____		
Please check the following: <input type="radio"/> I understand that my picture or likeness may be used in Society promotions. <input type="radio"/> I authorize MGCgms to include my contact information be included in Society listings for members to contact each other only.		
Signature: _____		
Signature: _____		

Mississippi Gulf Coast Gem & Mineral Society Inc.
P.O. Box 857 Ocean Springs MS 39566
mgcgms@bellsouth.net

Snoopy Gems
is the Official Publication of
The Mississippi Gulf Coast Gem and Mineral
Society, Inc.

AFFILIATIONS
The Southeast Federation of Mineralogical
Societies, Inc.
The American Federation of Mineralogical
Societies, Inc.
S.C.R.I.B.E. (Special Congress Representing
Involved Bulletin Editors)

OFFICERS 2020

President	Patrick Barrett
Vice President	Natalie Webb
Treasurer	Barbi Beatty
Secretary	Cheryl Rodriguez
Editor/Web master	Barbi Beatty
Parliamentarian	John Guglik
Member at Large	Harvey Marcum
Member at Large	Claire Martin

COMMITTEES

Membership	Barbi Beatty
Historian	Lettie White
Librarian	Liz Platt
Sunshine	Reba Shotts
Show Chair	Barbi Beatty

AFFILIATIONS

ALAA	John Wright: Director
SFMS	John Wright: Past President
SFMS	Barbi Beatty: Treasurer & Insurance Liaison
SFMS	Buddy Shotts: Past Long-range Planning, Past President, State Director

Annual dues are:
\$16 Individual
\$20 (2) Members in same house hold
\$6 Junior

2020 Workshop/Meeting Dates

January 11 OS Library 9:30-3:45
February 8 OS Library 9:30-3:45
March 14 OS Library 9:30-3:45
April 4 Club Picnic Seashore
Methodist Pavilion 11:00-4:00
April 11 OS Library Mini Show 9:30-3:00
May 8 OS Library 9:30-3:45
June 13 OS Library 9:30-3:45
July 11 OS Library 9:30-3:45
August 8 OS Library 9:30-3:45
September 12 OS Library 9:30-3:45
October 10 OS Library 9:30-3:45
November 12 After Vendor Dinner 5ish
December 12 Christmas Party OS
Library 11:00am-3:30pm

Dates subject to change.

Be sure to check each month!

The November meeting is the Thursday
evening of the gem show after the dinner
for the dealers at the Jackson County
Fairgrounds Civic Center Building.

December will be our
Christmas Party and Installation of
Officers

March 2020

Sun	Mo	Tue	We	Thu	Fri	Sat
1	2	3	4	5	6	7
8	9	10	11	12	13	14
15	16	17	18	19	20	21
22	23	24	25	26	27	28
29	30	31				

Snoopy Gems

Official Publication of the Mississippi Gulf Coast Gem & Mineral Society Inc.



<http://www.mgcgms.org>



The Mississippi Gulf Coast Gem & Mineral Society is a Non-profit Organization Dedicated to Education, Science, and the Lapidary Arts and Crafts

Snoopy Gems MCGMS
P.O. Box 857
Ocean Springs, MS 39566