

Does it really work?

Two years of assessments of swifts and bats occurrence in buildings before its thermal insulation

Lukáš Viktora
Czech Society for Ornithology
BirdLife Czech



Velvyslanectví České republiky
Embassy of the Czech Republic



CZECH CENTRE

ČESKÉ CENTRUM

Legislative framework

Act nr. 114/199, about Nature and Landscape Protection

- good tool, but often not used by properly or/and sufficiently
- the office cannot act when do not knows

Act nr. 183/2006, „Building“ Act

- no clear definition for planning permissions, some offices (construction administration) do not require permissions for thermal insulation, wall reconstruction, roofing exchange etc.



Massive loss of breeding sites!

Collaboration with State Environmental Fund of the Czech Republic

Governance

- Operational Programme Environment
- New Green Savings

CSO participation

- extension of obligatory rules for applicants (2015),
- methodology of building assessments (2015),
- qualification requirement for experts (2016),
- education training for SEF 44 local project managers (2016),
- two days experts trainings for 42 authorized persons (2016, 2017)

Trainings for experts

CSO in close collaboration with Czech Bat Conservation Society

1st day field training (sites, footprints, measures)

2nd day lectures and workshop



Since 2016: obligatory expert building assessments for birds and bats

Who?

All applicants for subsidies for thermal insulation of buildings (corporate bodies: Operational Programme Environment, private persons: New Green Savings)

When?

Due open tenders (generally 1 – 2 times a year)

Why?

- Data collection for conservation purposes,
- direct and efficient field conservation,
- sustainability of both public concerns – synanthropic birds and bats protection and energy savings.

Rich variety of structures



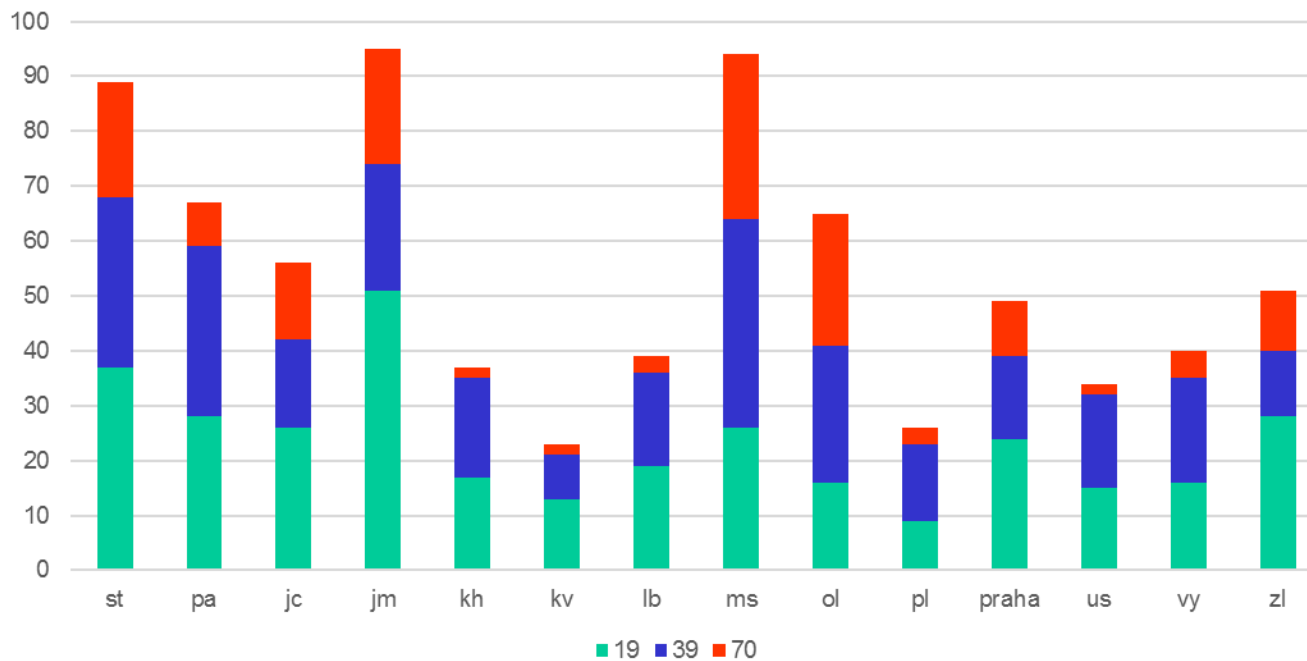
Results

2016 – 2017: 3 open tenders

765 buildings and complexes of buildings assessed
in all 14 regions of the Czech Republic



Distribution of assessments in regions according to particular open tenders



Direct effects:

- 79 Common Swift breeding colonies (est. almost 1000 bp)
- 192 Breeding sites of House Martin, Barn Swallow, House Sparrow, Blackbird
- 75 Reproductive bat colonies and hybernation/roosting sites

Saved!

Secondary effects:

Raising public awareness (owners).

Improvement of government and municipality servants, construction companies working.

Promotion of synanthropic animals conservation importance.

Expert building assessments evaluation:

45 experts from whole country involved
(in average 17 assessments per expert)

Evaluation criteria:

- fulfilment of methodology (technology, periods, daytime, weather conditions...),
- quality of outputs incl. recommended measures.

Results

494 excellent
158 good
113 poor

PRŮZKUM VÝSKYTU SYNURBINNÍCH DRUHŮ ŽIVOČICHŮ NA BUDOVĚ HASIČSKÉ ZBRojNICE BRAŇANY



Zpracoval:

Petr Janda - Biologické projekty
Lapso 103
430 01 Zámec
IČ: 67834795
tel. 725 969 063
e-mail: biologicke-projekty@email.cz
web: www.biologicke-projekty.cz

Petr Janda - Biologické projekty
Lapso 103, 430 01 Zámec
IČ: 67834795
tel. 725 969 063
e-mail: biologicke-projekty@email.cz
web: www.biologicke-projekty.cz

V Lípě, dne 14. února 2016

JUROS s. r. o.
Sídlo: Doudova 544/11, 147 00 Praha 4 – Podoř
Provozovna: Masarykova 62/109, 400 01 Ústí nad Labem
IČ: 25423363, DIČ: CZ25423363

ÚSPORY ENERGIÍ – ZATEPLENÍ OBECNÍHO ÚŘÁDU ŽIDNĚVES Obec Židněves Zpráva o biologickém - ornitologickém terénním letění



Zpracoval: Ing. Pavel Májer, Jan Lohmický

JUROS, s. r. o.
Sídlo: Doudova 544/11, 147 00 Praha 4 – Podoř
Provozovna: Masarykova 62/109, 400 01 Ústí nad Labem
IČ: 25423363, DIČ: CZ25423363

V Ústí nad Labem, 30. 6. 2017

Future steps and scopes

- Continuous experts trainings,
- set up evaluation and control system for experts,
- feedback – quality of realized measures.



Thank you for your attention!



Special thanks:



Velvyslanectví České republiky
Embassy of the Czech Republic



CZECH CENTRE
ČESKÉ CENTRUM