

A New Place for Swifts & Bats in the Modern Built Environment



Edward Mayer

Swift Conservation



Why is a new place needed?



Continuing decline of Swifts and Bats
Urgent need for more accommodation for Swifts as buildings are demolished, renovated, made inaccessible and replaced with ones that are inhospitable

Developers & House Builders



Don't welcome wildlife!



Don't like extra expense *Don't like complications*
Are frightened that Swift & Bat Bricks will deter purchasers
Are "racing to the bottom" in both size & quality because of a major housing shortage and high land prices

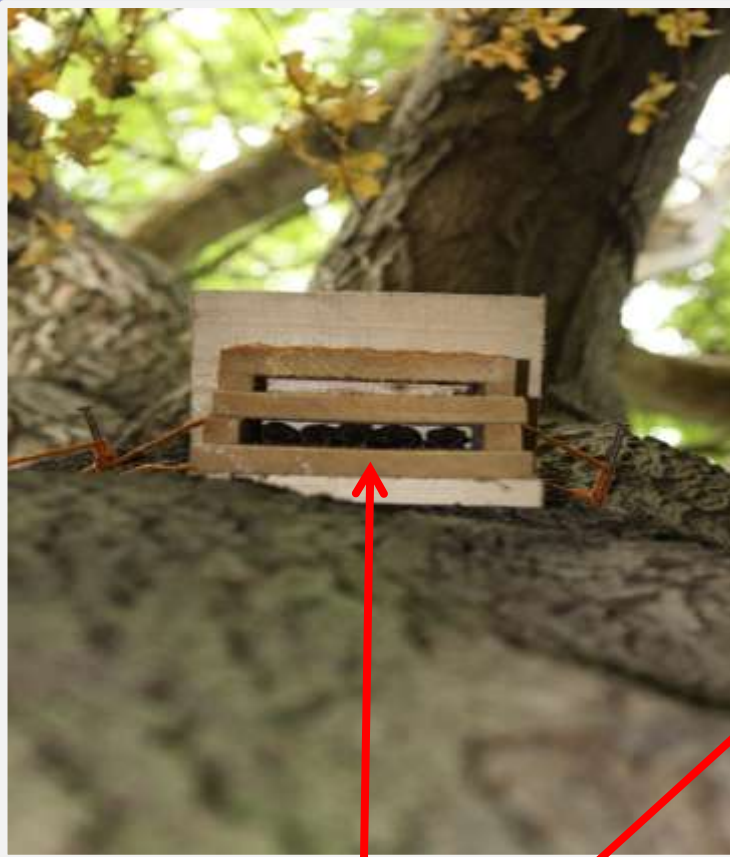
Architects are often unsympathetic to wildlife

The BMW plant in Leipzig – Central Building



**They often resist any changes or additions to their designs on
aesthetic grounds
They increasingly use exotic or unconventional materials that cannot be
adapted to hold Swift or Bat Bricks**

But Swifts & Bats use trees!

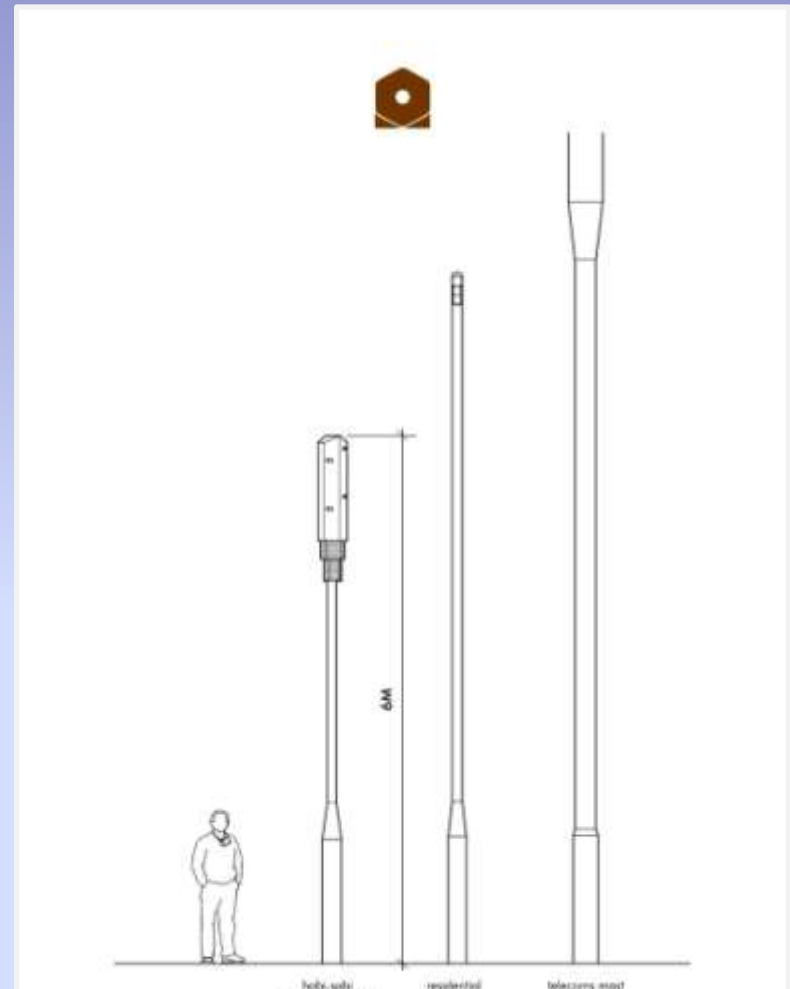
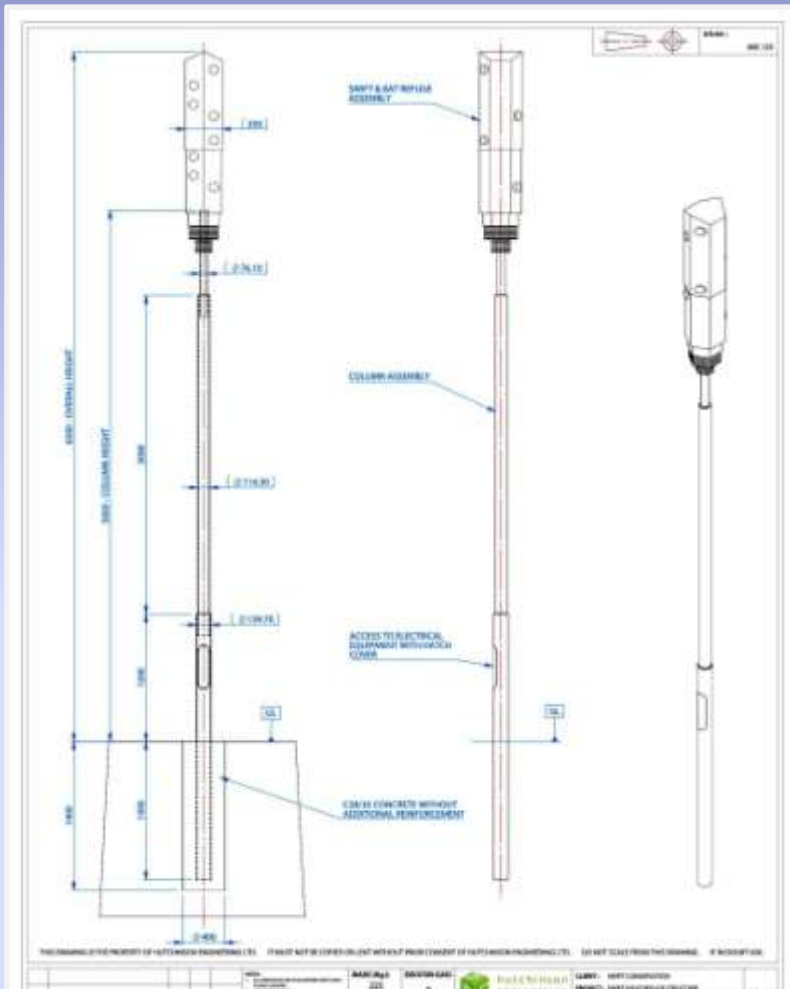


They will roost and nest in holes in trees, and in boxes fixed to trees, as shown here



Above – Swifts in a tree nest box

The Answer? A man-made “tree”



The urban townscape is full of utility poles – so many we don't even notice them – a few more for Swifts will be invisible

Concept - Edward Mayer Design – 51 architecture

Nest places fitted in the frame of a mobile phone mast



Made by Hutchinson, the same company that makes tubular mobile phone masts in the UK

A typical Installation – we hope!



The Velodrome at the London 2012 Olympics Site – surrounded by utility poles but itself “untouchable”!

Our Swift Column – “exploded view”



Easy to set up – just like a lamp post

Powered 230 volts 13 amps

Has built in sound system

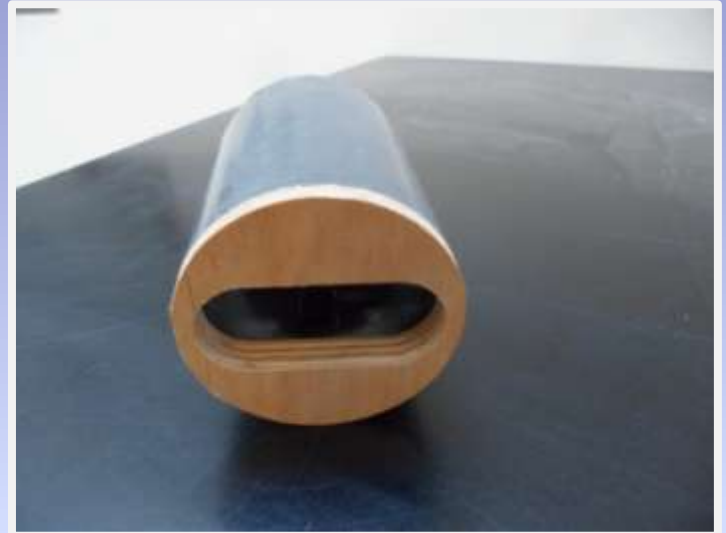
Can have built in CCTV system

Very low maintenance

Very easy to operate

Switch on when Swifts arrive
Switch off when they leave

For 8 Pairs of Swifts



Left: The plywood nest place structure that goes inside the top of the column
Above: one of the eight nest place entrances

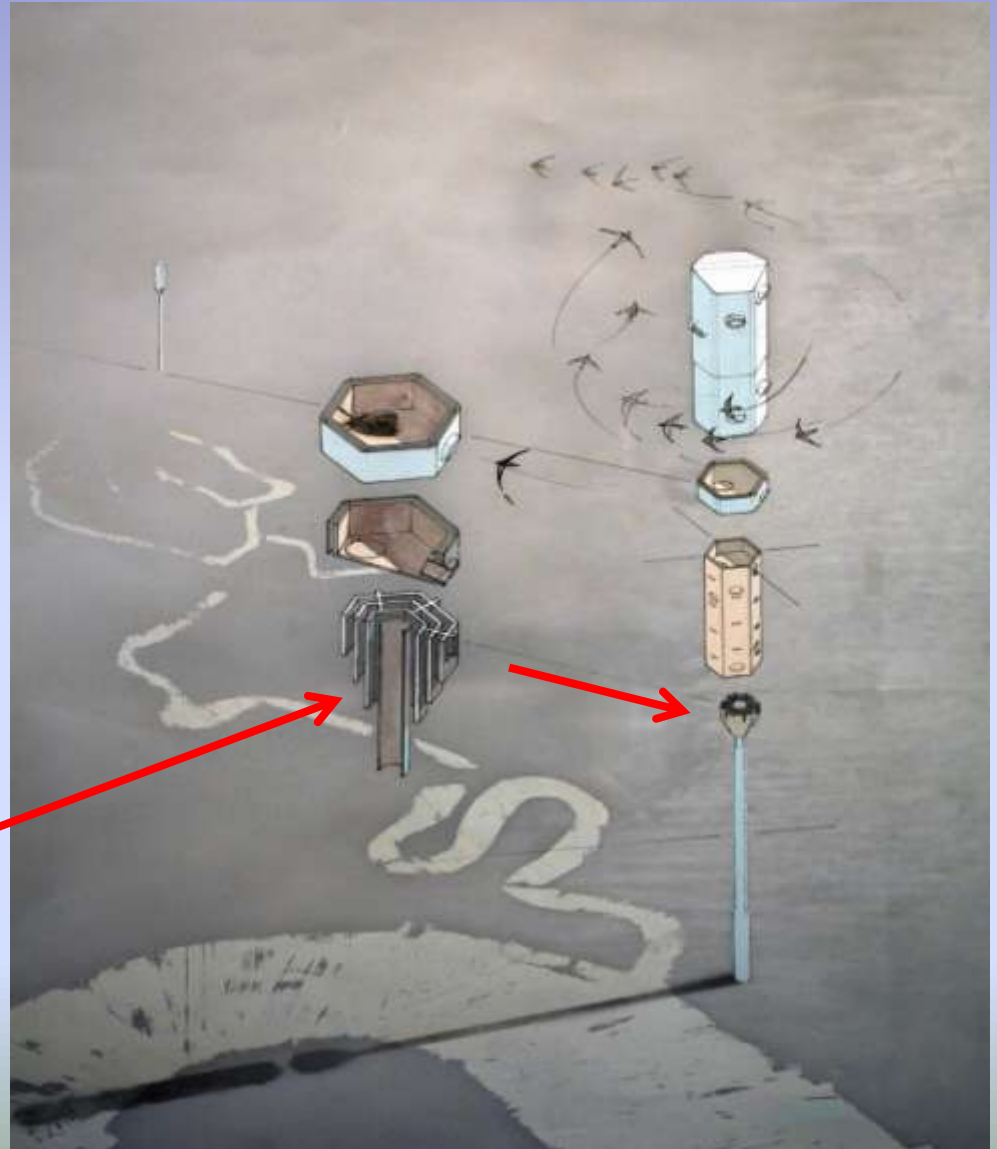
And a special place for Bats

Bats roost and breed in holes in trees

We also know that they live in towns and cities and use street trees as places to find their insect food

Bats have been seen feeding near Oxford Circus and the Houses of Parliament in London!

This section is made of oak shingles and is intended for Bats



The first Swift & Bat Column should be set up here



**Stratford International Railway Station and the
2012 Olympic Park London Arena – West Ham Football Club**

Current Swift & Bat Column projects

- Woking Borough Council
- Gustafson Porter Bowman, Stratford International Quarter Landscaping
- University of Birmingham "Green Heart" development
- Waveney Bird Club Norfolk (Harleston Swift Tower Project)
- **The Royal Society for the Protection of Birds & Lendlease funded the design & development of the Swift & Bat Column**



So many great opportunities!



**A Swift & Bat Column could be a good way of providing nest places
at this London water works**

Please Help Swifts!



For more information see

www.swift-conservation.org