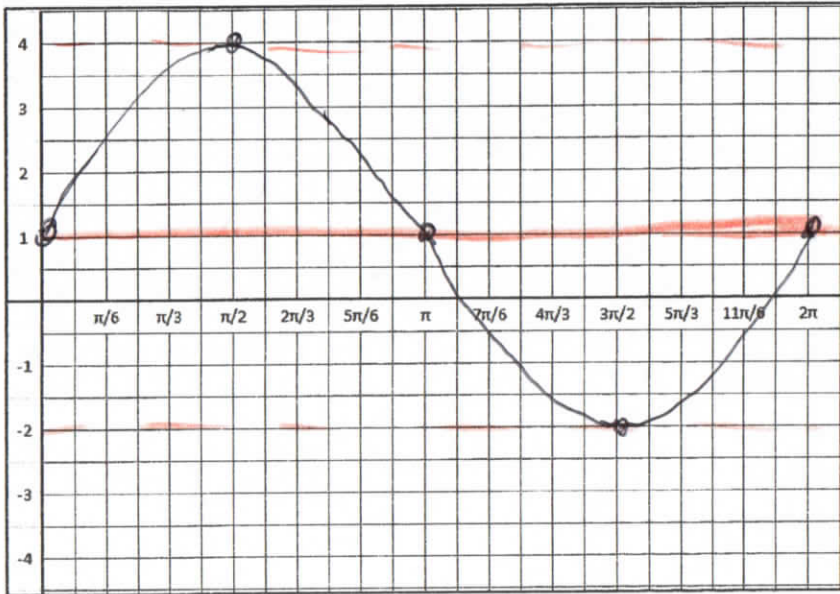


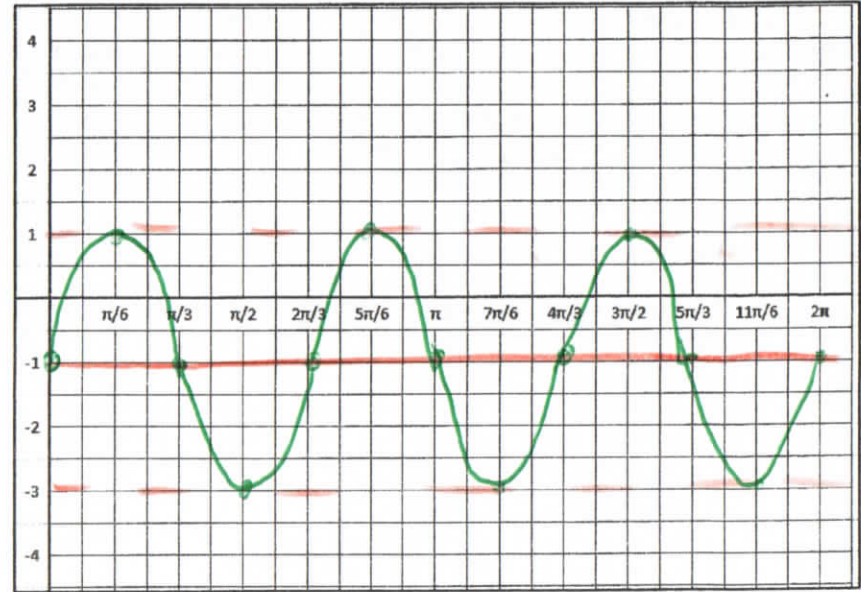
$$y = 3 \sin \theta + 1$$



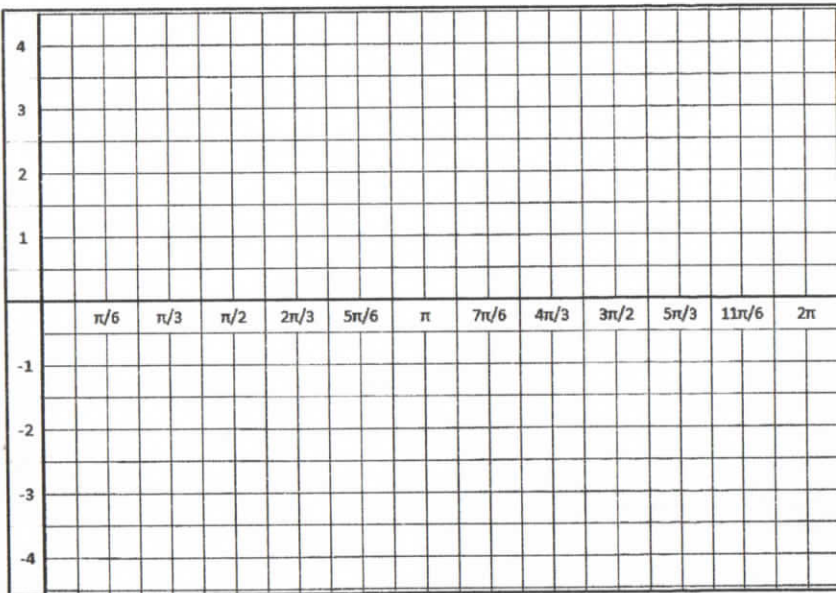
$$2 \sin 3\theta - 1$$

$$\left| \frac{2\pi}{3} \right| = 120^\circ$$

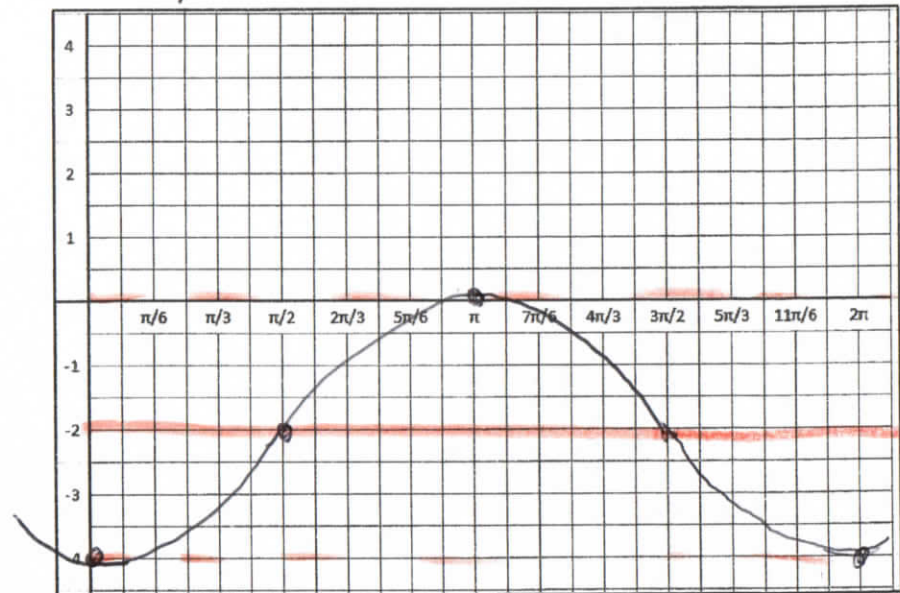
$$\frac{2\pi}{3}$$



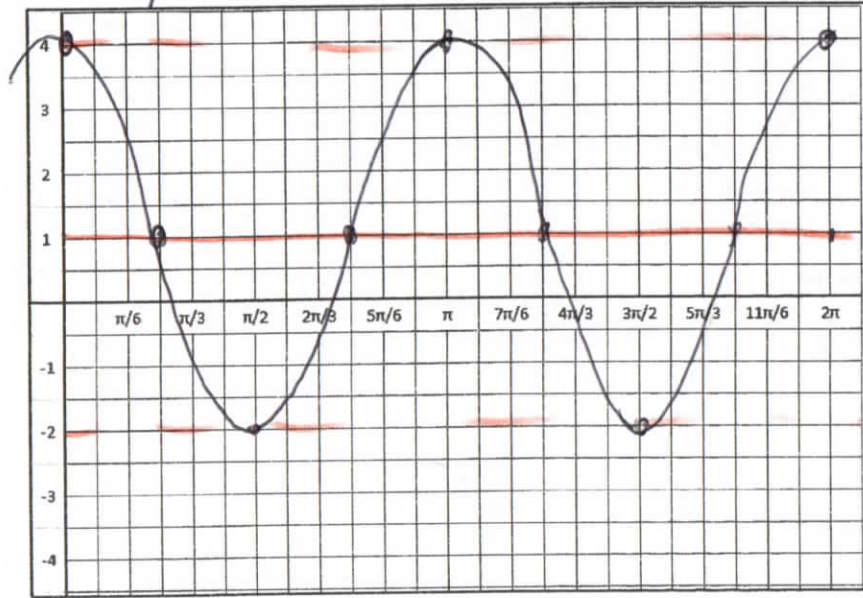
$$y = -\sin 6\theta + 2$$



$$y = -2 \cos \theta - 2$$

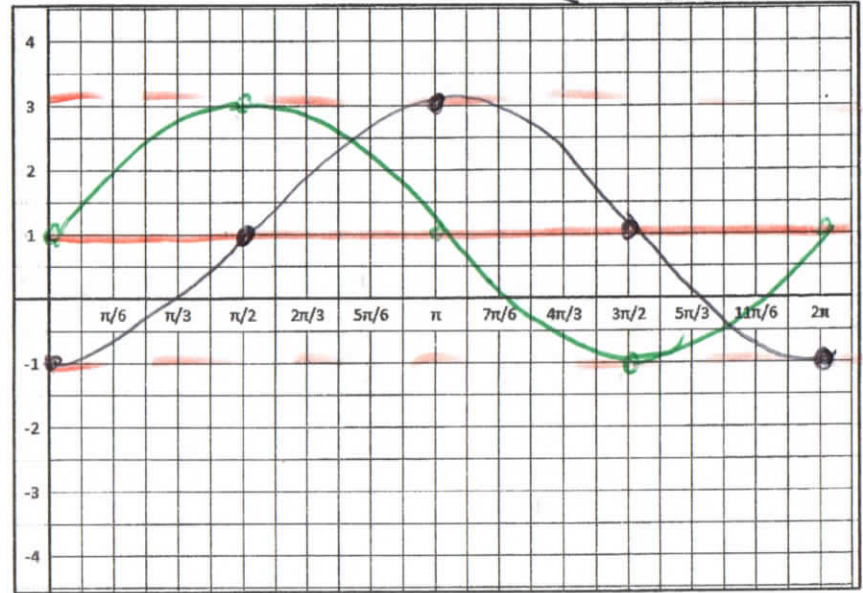


$$y = 3 \cos 2\theta + 1$$

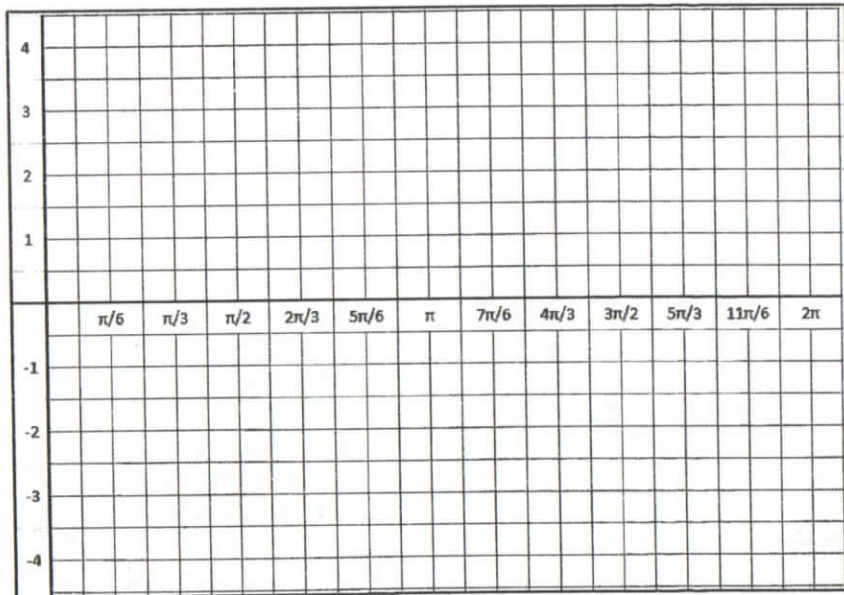


$$y = 2 \sin\left(\theta - \frac{\pi}{2}\right) + 1$$

$2 \sin \theta + 1$



$$y = -2 \sin 4\theta + 1$$



$$y = 3 \cos 2\theta$$

