

# HOUSING PARTNERSHIP FOR THE NEW RIVER VALLEY

*"To establish a system for the provision of safe, affordable housing for low to moderate income families within the New River Valley of Virginia"*

## Continuum of Care for the New River Valley of Virginia

*Bondurant Realty Corporation • City of Radford • Community Foundation of the New River Valley • Giles County Housing and Development Corporation • Giles Department of Social Services • Homeless Intervention Program • Montgomery County Emergency Assistance Program • Montgomery County Office on Youth • New River Community Action • New River Family Shelter • New River Valley Planning District Commission • Page & Associates Real Estate • Pembroke Management Inc. • Radford Department of Social Services • Regional Homeless Education • Salvation Army • Section 8 Housing - Floyd • Section 8 Housing - Giles • Section 8 Housing - Montgomery • Section 8 Housing - Pulaski • St. Jude's Catholic Church • Virginia Department of Housing and Community Development • VMH, Inc. • United Way of Montgomery, Radford and Floyd • Women's Resource Center of the New River Valley*

## **Continuum of Care for the New River Valley of Virginia**

### **1. Abstract of your Continuum of Care**

The Continuum of Care for the New River Valley of Virginia, which includes Floyd, Giles, Montgomery, and Pulaski Counties, and the City of Radford, has been developed by a partnership of representatives of 26 public and private organizations. Over a period of one and a half years, the Housing Partnership for the New River Valley met bi-monthly. Its mission is to establish a system for the provision of safe, affordable housing for low to moderate income families within the New River Valley of Virginia. The Continuum of Care system that has been developed attempts to coordinate services for the homeless and simplify for homeless individuals access to those services. Individual flow charts with services and telephone numbers have been prepared for each of the five local jurisdictions in the New River Valley. These services represent what help is available (during and after business hours) from the point of homelessness to subsidized housing.

The Housing Partnership identified five gaps in available services. The top two gaps were transitional housing and supportive services; and emergency shelter and supportive services. Our requests to the Supportive Housing Program are for a transitional housing program, including facility and services, for people who are homeless due to domestic violence; and for a homeless supportive services program for people who are homeless due to all reasons other than domestic violence. It is our belief that this system of services will help us better meet the needs of the homeless, and, therefore, better combat homelessness in the New River Valley of Virginia.

### **2. The geographic area covered by your Continuum of Care System**

This Continuum of Care system will be implemented in the New River Valley which is located in the southwestern part of Virginia. The valley is formed from the bisection of the New River, the nation's oldest and the world's second oldest river. The New River Valley is a rural area which includes the counties of Floyd, Giles, Montgomery, Pulaski and the city of Radford. More than half (50.5%) of the population is considered rural, compared to Virginia's 30.6%. The region has experienced an 8% growth over the period from 1980-1990. Covering a land area of 1,458 miles, the New River Valley has a population of 152,680. According to the 1990 census, the population of the New River Valley is divided as such:

Floyd County	11,965
Giles County	16,366
Montgomery County	73,913
Pulaski County	34,496
<u>City of Radford</u>	<u>15,940</u>
<b>New River Valley</b>	<b>152,680</b>

## **2. Continued**

The population of the area is predominately White (93%). Black residents account for 4.5% of the population; with 2.5% of the area's residents of other races. According to the New River Valley Planning District (August 1997) and *Virginia's Population - 1995 Estimates* (Weldon Cooper Center for Public Service University of Virginia, June 1996), the population of the New River Valley is projected to experience continued, steady growth. By the year 2020, it is projected that 197,550 people will reside in the New River Valley, an increase of 26% or 41,350 people. (*Community Health Report Card*, New River Health District, April 1998.)

According to the New River Valley Housing Assessment (T. Koebel, April 1995), there were at least 11,643 households in the region in 1990 identified as having housing problems (lacking complete plumbing, lacking complete kitchen, more than 1 person per room and cost burden of 30% of income or higher). Very low income renters constituted the largest number of all households with housing problems.

The 1990 census provides the latest educational data available for the New River Valley. Every jurisdiction, except for Radford, falls below the State's percent of persons 25 years and older who are high school graduates. Over 32% of the Valley's population (or 28,218 persons) age 25 years and older have less than a high school diploma. Over half of those (14,652 persons) have less than a ninth grade education.

Homelessness and domestic violence are compounded by the problems of poverty. The New River Valley has 10.2% of its population below the 100% poverty level; and 26.2% under the 200% poverty level. In fiscal year 1996 (before TANF replaced AFDC), there were 12,094 persons in the New River Valley receiving AFDC; 11,445 persons receiving Food Stamps; and 11,698 Medicaid recipients.

## **3. Your community's process for developing a Continuum of Care Strategy**

### **a. Identification of organizational structures and meetings held to date...**

The New River Valley has a long history of collaboration between human service agencies. When the Women's Resource Center of the New River Valley, Inc., the regional agency which runs an emergency shelter for battered women and their children, started talking about the need for housing for its clients, it was clear the discussion needed to begin with a group of human service agency staffers.

The Women's Resource Center Board of Directors set the discussion of the lack of affordable housing as a priority for 1997. Board member Linda Johnson was appointed Chair of the committee which included other WRC Board members and the WRC Executive Director. Linda scheduled the first meeting for October 23, 1997 and called it the Transitional Housing Committee. She invited representatives from three other organizations. Five people attended and we talked about the housing problems of the New River Valley. It was the beginning of nineteen

### 3.a. Continued

months worth of organizing. We eventually called ourselves the Housing Partnership for the New River Valley and identified our mission as:

*"To establish a system for the provision of safe affordable housing for low to moderate income families within the New River Valley of Virginia."*

We elected Pat Brown, Executive Director of the Women's Resource Center, as our president and Patricia Jacobs, of Pembroke Management, Inc., as our secretary.

The Partnership at this point has met 10 times. Forty (40) participants represent 27 organizations. Additionally, its two main committees have met a total of 17 times. At each meeting, we identified some answers, many more questions, and always a list of people who needed to be invited to join us.

The following is a summary of the Partnership process. Committee work happened between Partnership Meetings. (Minutes of the Partnership meetings appear as Attachment 1.)

MEETING DATE	MEMBERSHIP	TOPICS OF DISCUSSION
	No. of Organizations (different people)	
October 23, 1997	5 organizations (5 people) TOTAL - 5(5)	<ul style="list-style-type: none"> <li>• Unmet housing needs of WRC shelter clients</li> <li>• <b>Problems of low to moderate income housing in general</b></li> <li>• Identified other people who need to be "at the table"</li> </ul>
November 13, 1997	Added 5 organizations Added (5 people) TOTAL - 10(10)	<ul style="list-style-type: none"> <li>• <b>Realized the problem is complex and includes socio-economic problems as well as housing availability</b></li> <li>• <b>Identified other people who need to be "at the table"</b></li> </ul>
January 22, 1998	Added 3 organizations Added (7 people) TOTAL - 13(17)	<ul style="list-style-type: none"> <li>• Tried to determine how to determine current resources</li> <li>• <b>Robbie Campbell introduced Continuum of Care concept and availability of CDBG Planning Grants</b></li> <li>• <b>Identified other people who needed to be "at the table"</b></li> </ul>
March 5, 1998	Added 3 organizations Added (7 people)          TOTAL - 16(24)	<ul style="list-style-type: none"> <li>• Named ourselves Housing Partnership for the New River Valley</li> <li>• Identified our mission - <i>"To establish a system for the provision of safe affordable housing for low to moderate income families within the New River Valley of Virginia."</i></li> <li>• Elected Pat Brown, President and Patricia Jacobs, Secretary</li> <li>• <b>Decided to concentrate efforts on Continuum of Care and Transitional Housing</b></li> <li>• <b>Created two committees and named their Chairs:</b> <ul style="list-style-type: none"> <li>- Continuum of Care, Patricia Jacobs</li> <li>- Transitional Housing, Linda Johnson</li> </ul> </li> <li>• Decided to apply for a CDBG Planning Grant (with a lot of help from the Planning District Commission)</li> <li>• Decided to ask Town of Narrows to submit grant</li> <li>• <b>Assigned needs assessment tasks</b></li> <li>• <b>Identified other people who needed to be "at the table"</b></li> </ul>

### 3.a. Continued

MEETING DATE	MEMBERSHIP	TOPICS OF DISCUSSION
	No. of Organizations (different people)	
June 29, 1998	Added 0 organizations Added (2 people)  TOTAL 16(26)	<ul style="list-style-type: none"> <li>• Discussed the Continuum of Care               <ul style="list-style-type: none"> <li>- What is it and how do we do it?</li> </ul> </li> <li>• Outlined what we needed to do and who we needed to help us</li> <li>• Brainstormed a new list of 20 additional organizations we needed to complete the Continuum of Care process. It included all local governments, school superintendents, ministerial associations, homeless individuals, and other organizations. All were contacted.</li> <li>• Wondered if there was a table anywhere in the New River Valley big enough for all the people we needed</li> </ul>
September 28, 1998	Added 7 organizations Added (9 people)  TOTAL - 23(35)	<ul style="list-style-type: none"> <li>• Worked on Continuum of Care               <ul style="list-style-type: none"> <li>- Pat Brown facilitated afternoon session in which the total group:                   <ol style="list-style-type: none"> <li>1. Defined homeless</li> <li>2. Listed services needed</li> <li>3. Listed services in place</li> <li>4. Identified gaps in service</li> <li>5. Used a voting process to determine a prioritization of the identified gaps in service</li> </ol> </li> </ul> </li> <li>• Everyone participated in the discussion.</li> <li>• Small and large group work was done.</li> <li>• Tasked the Continuum of Care Committee with proceeding with the writing of the Continuum of Care Plan</li> <li>• Announced receipt of CDBG Planning Grant</li> <li>• Outlined tasks to be done for CDBG Planning Grant and who is responsible</li> <li>• Identified Timeline for CDBG preparation</li> </ul>
November 9, 1998	Added 0 organizations Added 0 people TOTAL - 23(35)	<ul style="list-style-type: none"> <li>• Determined Layout of Continuum of Care</li> <li>• Updated on-going needs assessment</li> <li>• Appointed Transitional Housing Site Selection Committee</li> </ul>
January 19, 1999	Added 1 organization Added ( 2 people)  TOTAL - 24(37)	<ul style="list-style-type: none"> <li>• Facilitated Continuum of Care work session on all resources in each of the five localities for Homeless Individuals</li> <li>• Approved Radford as site for CDBG proposal for Transitional Housing for domestic violence victims</li> <li>• Identified Women's Resource Center as operator of project</li> </ul>
February 25, 1999	Added 1 organization Added (1 person)  TOTAL - 25(38)	<ul style="list-style-type: none"> <li>• Presented Continuum of Care committee work: second draft of flowcharts tracing steps homeless person can take to receive services in each of the region's 5 localities</li> <li>• Corrected some information on flow charts</li> <li>• Reviewed Architect's plan for Transitional Housing Project</li> <li>• Developed plan for presentation to Radford City Council for Community Development Block Grant Transitional Housing</li> <li>• Discussed CDBG Public Hearings</li> </ul>

### 3.a. Continued

MEETING DATE	MEMBERSHIP	TOPICS OF DISCUSSION
	No. of Organizations (different people)	
April 13, 1999	Added 1 organization Added (2 people)	<ul style="list-style-type: none"> <li>• Agreed with recommendation of Continuum of Care Committee to submit to state Continuum of Care Plan</li> <li>• Discussed final preparations of Continuum of Care Plan               <ul style="list-style-type: none"> <li>- Reviewed information for Gaps Analysis (from needs assessment)</li> <li>- Assigned tasks and deadlines for the last pieces</li> <li>- Agreed to support New River Community Action and the Women's Resource Center in their Supportive Housing Program grant proposals as the priorities for the region as evidenced by the Continuum of Care Gaps Analysis. Deadline for proposal is April 26.</li> </ul> </li> <li>• Reported City of Radford's unanimous support of CDBG proposal</li> <li>• Discussed final preparations for Community Development Block Grant Transitional Housing proposal</li> </ul>
	TOTAL - 26(40)	<ul style="list-style-type: none"> <li>• Took a very deep breath.</li> </ul>
Next meeting - Summer 1999	?	<ul style="list-style-type: none"> <li>• Hear decisions of CDBG Project and Supportive Housing Program grants</li> <li>• Cheer and/or re-group.</li> </ul>

- 3.b. The specific names and types of organizations involved. Indicate each organization's level of commitment and activity.

***PUBLIC ORGANIZATIONS***

City of Radford  
Giles County Department of Social Services  
Montgomery County Human Services Department  
Montgomery County Public Schools  
Radford City Department of Social Services  
Radford University  
Virginia Department of Housing and Community Development

***PRIVATE ORGANIZATIONS***

Regional Services

Community Foundation of the New River Valley  
Homeless Education Program for the New River Valley  
Homeless Intervention Program  
New River Community Action  
New River Family Shelter  
New River Valley Planning District Commission  
Pembroke Management, Inc.  
Salvation Army  
United Way of Montgomery, Radford, and Floyd  
VMH, Inc.  
Women's Resource Center of the New River Valley, Inc.

Businesses

Bondurant Development Corporation  
Page Realty

Churches

Blacksburg Presbyterian Church  
St. Jude's Catholic Church  
St. Mary's Catholic Church

Services for Individual Localities

Giles County Housing Development Corporation  
Montgomery County Emergency Assistance Program  
Pulaski County Emergency Assistant Program

### **3. b. Continued**

## **Housing Partnership for the New River Valley**

### **Profiles of Member Organizations**

**Architectural Alternatives.** Private business whose mission is to work with community groups

**Community Foundation of the New River Valley.** Private non-profit whose mission is to improve the quality of life in the New River Valley. Its Board of Directors is made up of citizens from the New River Valley. Their Board has a strong minority representation.

**Giles County Department of Social Services.** Public agency which is designed to meet the basic needs of those that cannot help themselves. Its Board of Directors is made up of citizens representing the County.

**Giles County Housing & Development Corporation.** Private non-profit whose mission is to develop and provide housing to low to moderate income families and to address housing needs of the area of rehabilitation and home repair. Its Board of Directors is made up of citizens, a percentage of whom are individuals who have low to moderate income.

**Montgomery County Emergency Assistance Program.** Private program whose mission is to meet the immediate, emergency and temporary needs of the low-income, unemployed, elderly, and handicapped individuals and families of Montgomery County in the areas of food, clothing, furniture and financial assistance. Its Board of Directors is made up of clergy, area church members, business and human service agency members.

**Montgomery County Office on Youth.** Public program whose mission is preventing juvenile delinquency and fostering positive youth development. Its Board of Directors is made up of citizens appointed by the Montgomery County Board of Supervisors. It includes youth representation.

**New River Community Action.** Private non-profit whose mission is to assist through cooperative partnerships, individuals and communities as they strive to achieve self-sufficiency. Its Board of Directors is made up of local government officials, individuals who have a low income, and representatives of local groups such as the Ministerial Association, League of Women Voters, Women's Club, Tri-County Community Betterment Club and Retire Teacher's Association.

**New River Family Shelter.** Private non-profit whose mission is to provide safe emergency and transitional shelter for families throughout the New River Valley and to connect families with supportive services that empower them to make behavioral changes that promote self-sufficiency and lasting stability. Its Board of Directors is made up of citizens representing churches, businesses, human service agencies and students.



### **3.b. Continued**

**Pembroke Management, Inc.** Private non-profit whose mission is to provide rental assistance for families within certain guidelines (Low to moderate). Its Board of Directors is made up of citizens.

**Radford City Community Development Department.** Public Department of local government whose mission is public service.

**Radford City Department of Social Services.** Public Department whose mission is designed to meet the basic needs of those that cannot help themselves. Its Board of Directors is made up of citizens appointed by local government who represent churches, business, human services and the university.

**Regional Homeless Education Program.** Regional program of Montgomery County Public Schools whose mission is to insure access to free and appropriate educational services for all homeless children and youth throughout the New River Valley.

**Salvation Army.** Private non-profit whose mission is helping people. Its Board of Directors is made up of citizens.

**St. Jude's Roman Catholic Church.** Private religious organization whose mission includes addressing the needs of low-income individuals. Its governing body is its church members.

**St. Mary's Roman Catholic Church.** Private religious organization whose mission is to gather people of faith to study, pray and act around gospel values and catholic social teaching as manifested by current day issues in our communities. Its governing body is its church members.

**United Way of Montgomery, Radford & Floyd.** Private non-profit whose mission is to provide a way for the community to care and to develop teamwork among Health and Human Services. Its Board of Directors is made up of citizens representing a diverse group of organizations and business professions.

**VMH, Inc.** Private non-profit whose mission is to acquire, sell, rehabilitate, finance, own, manage, maintain, construct, improve housing for low and moderate income individuals and families; and to implement programs to ameliorate the housing needs of the disadvantaged. Its Board of Directors is made up of citizens.

**Women's Resource Center of the New River Valley, Inc.** Private non-profit whose mission is to provide programs and services to adult and child victims of domestic violence and sexual assault. Its Board of Directors is made up of citizens from throughout the New River Valley.

### 3.b. Continued

*Level of Commitment and Activity Scale for  
Organizations Represented in Partnership\**

Blacksburg Presbyterian Church	1
Bondurant Development Corporation	3
City of Radford	4
Community Foundation of the New River Valley	2
Giles County Department of Social Services	4
Giles County Housing Development Corporation	3
Homeless Educational Program for the New River Valley	3
Homeless Intervention Program	3
Montgomery County Emergency Assistant Program	2
Montgomery County Human Services Department	2
Montgomery County Public Schools	1
New River Community Action	4
New River Family Shelter	3
New River Valley Planning District Commission	4
Page Realty	2
Pembroke Management, Inc. (Section 8 Housing)	3
Pulaski County Emergency Assistance Program	2
Radford City Department of Social Services	2
Radford University	2
Salvation Army	1
St. Jude's Catholic Church	2
St. Mary's Catholic Church	1
United Way of Montgomery, Radford, and Floyd	3
Virginia Department of Housing and Community Development	2
VMH, Inc.	3
Women Resource Center of the New River Valley, Inc.	4

---

*\* Scale*

- 1 Attended 2 meetings
- 2 Attended at least 3 meetings and helped with project preparation  
(i.e., public hearing, publicity, data collection)
- 3 Attended a majority of meetings and served on either Continuum of Care Committee or  
Transitional Housing Committee
- 4 Attended majority of meetings and served on either Continuum of Care Committee  
or Transitional Housing Committee and took leadership responsibility

4. **Your community's Continuum of Care system under development**  
a. **Your community's strategy or vision to combat homelessness, including specific goals and action steps**

Interested individuals and agency representatives started meeting together to talk about the lack of subsidized housing for people in our community who were homeless. Our vision from the very beginning was homes for the homeless of the New River Valley. The strategy used to begin to accomplish this vision was to create a partnership of people who shared the vision and begin the journey of better combating homelessness in the New River Valley. Our initial goals and action steps were:

**GOAL 1: To better understand the housing situation for low to moderate income individuals who are homeless in the New River Valley.**

Action Steps:

1. Assess housing problems
2. Assess housing services
3. Identify gaps in services

**GOAL 2: To improve the situation for the homeless in the New River Valley.**

Action Steps:

1. Create Transitional Housing
2. Create a Continuum of Care

As the Housing Partnership worked toward these goals, several housing problems were identified including: closing of mobile home parks; decreased money for assisted units; owners selling out; decreased availability of assisted units; credit problems; low to moderate income families seen as high risk; and difficulty with landlord-tenant relations. These identified problems further compounded the plight of the homeless in establishing permanent housing.

Our strategy was two-fold: create transitional housing for victims of domestic violence (which is the region's largest group of homeless individuals) with a broad array of supportive services; and create supportive services for homeless individuals who are not victims of domestic violence. In order to accomplish this, the Partnership decided to write a Community Development Block Grant to fund the construction of transitional housing and to write a Continuum of Care which could help organize our efforts and allow individual agencies in the region to apply for Supportive Housing Program grants in order to fund supportive services.

Our vision is that with coordination, planning, and commitment of the entire service community, we can do a much better job at combating homelessness in the New River Valley.

The mission of the Housing Partnership has remained constant... *"to establish a system for the provision of safe, affordable housing for low to moderate income families in the New River Valley."* That process continues as the work progresses.

4.     **b. Fundamental components of your Continuum of Care system currently in place and those your community is working toward**

The components of the Continuum of Care system currently in place include those referenced on the enclosed charts: New River Community Action; Social Services; Women's Resource Center; the Haven; Section 8 Housing; Rental Assistance; Salvation Army; and Hip program.

We are working toward the development of transitional housing and extensive case management services for the homeless.

**c. How homeless persons receive or access assistance available under each component**

The enclosed charts indicate how homeless persons receive services in the New River Valley. New River Community Action is the lead agency for assessment of needs and referrals for those who are not victims of domestic violence.

The Women's Resource Center is the lead agency for service provision for those who are victims of domestic violence. Included in its services are a 24-hour hotline, emergency shelter, counseling, homeless education, and advocacy.

While all of the localities we serve have some type of emergency assistance program in place, these are often managed by Community Action and funded by private donations (churches, individuals.) Access to emergency services for hours when the offices are closed are via RAFT -- the 24-hotline of the New River Valley Community Services.

The New River Valley has a homeless shelter in Montgomery County called The Haven. It closed in the spring of 1998 in order to move to a better facility. Due to a number of problems, the new facility has not yet opened. It is hoped it will open in May of 1999

**d. How each subpopulation (e.g. veterans or persons with mental illness, substance abuse or HIV/AIDS) is reached or will be reached**

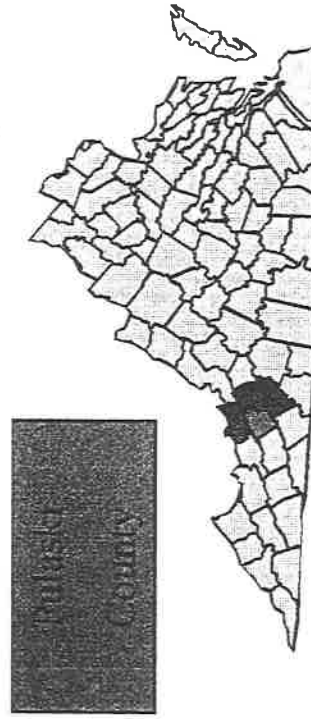
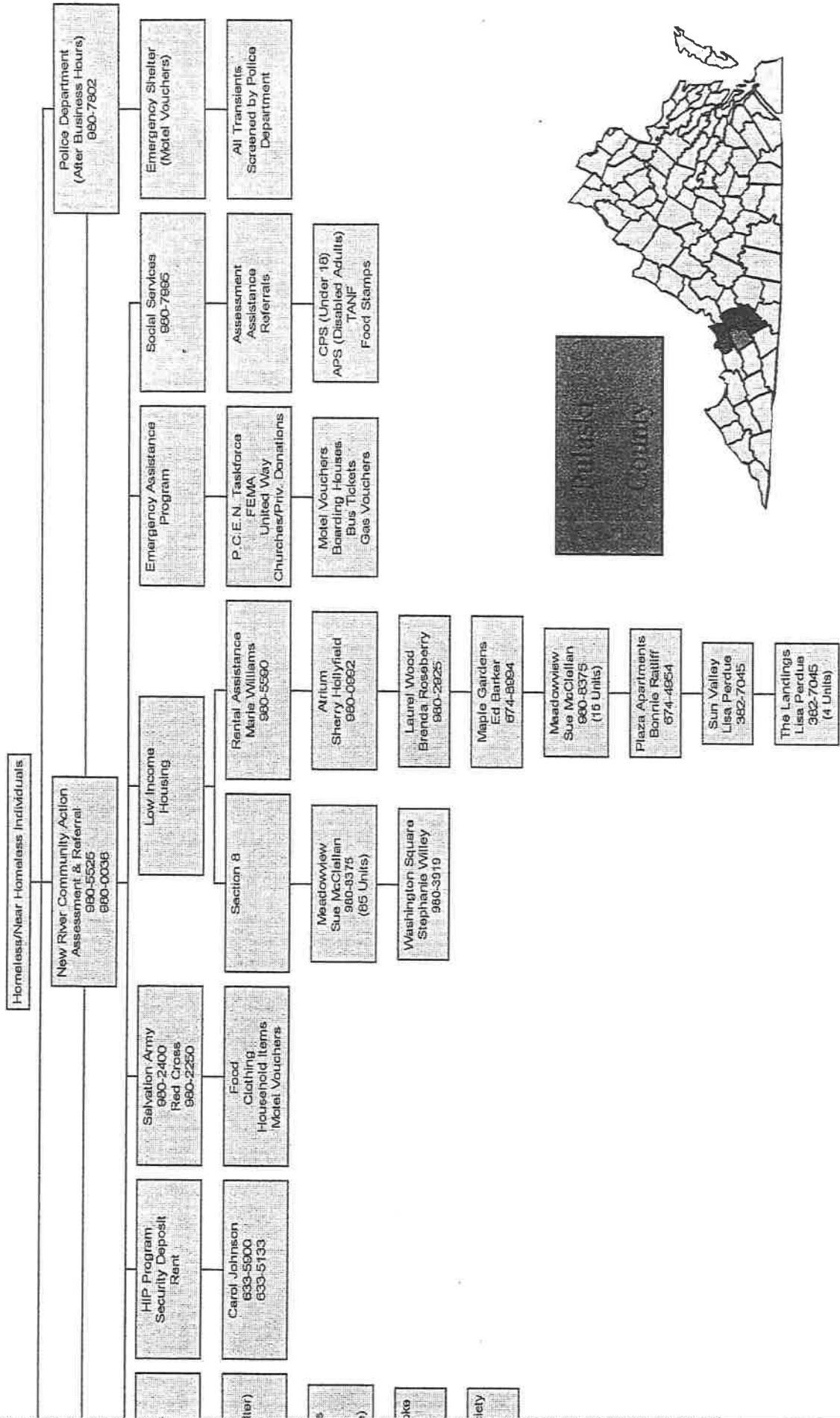
To reach specific subpopulations of the homeless such as the chronically mentally ill or those with substance abuse problems, we will continue to access the services already in place for those populations. New River Valley Community Services provides comprehensive programs for the mentally challenged and substance abusers in our community. These services include, but are not limited to, counseling and supportive housing.

**e. How your system facilitates movement of homeless persons from one component of the system to another and how the components are linked.**

While our system does not have a formal process for "movement of homeless persons from one component of the system to another," we certainly have an established program of resources available (see enclosed chart of *Resources Available to the Homeless*). However, as the supportive housing program continues to progress the staff of that program will develop a plan for the interaction of agencies and services. As evidenced by the commitment of Housing Partnership members, an informal system of networking and providing services already exists in our community and is quite effective.

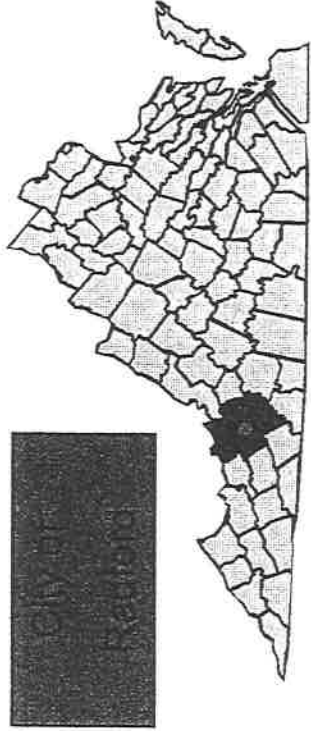
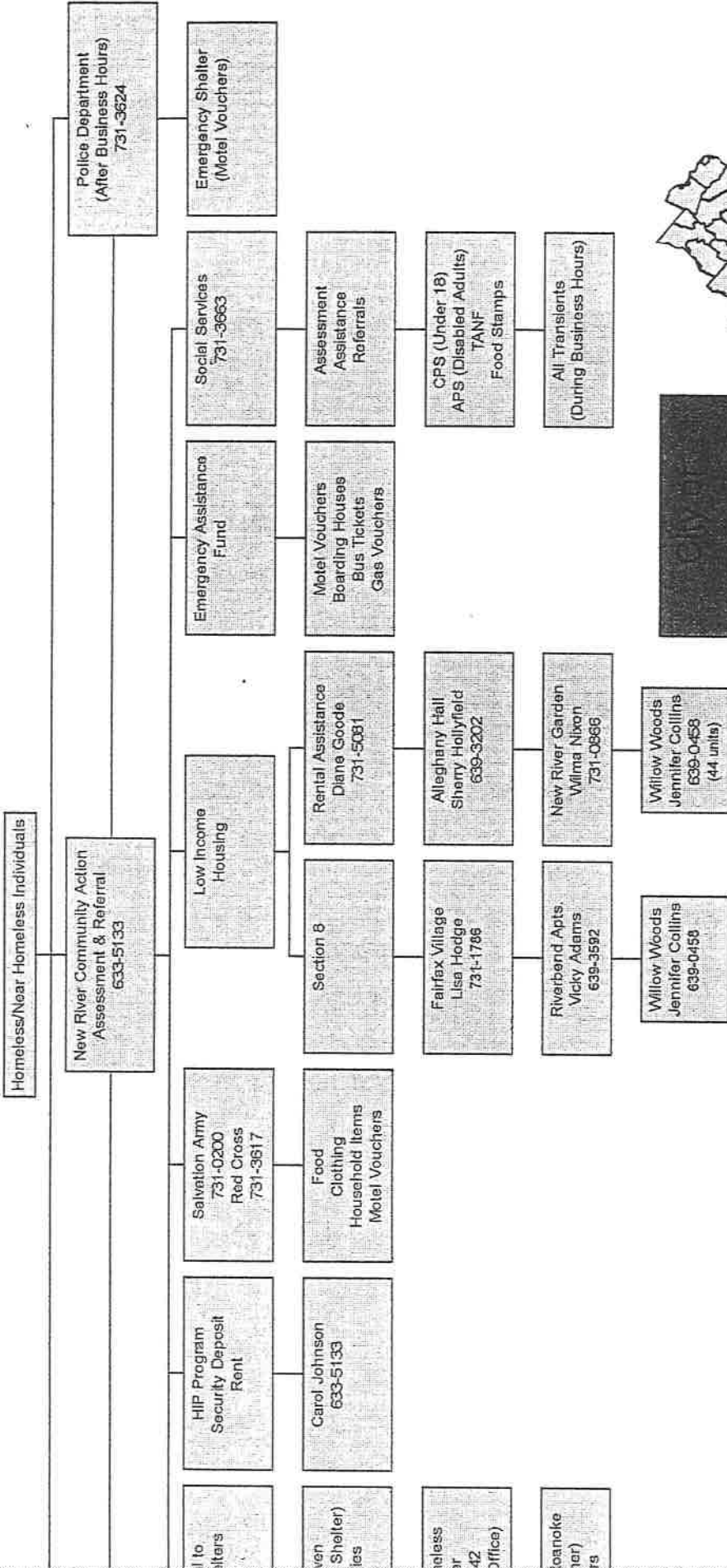
# Available to the Homeless in the New River Valley of Virginia

## PULASKI COUNTY



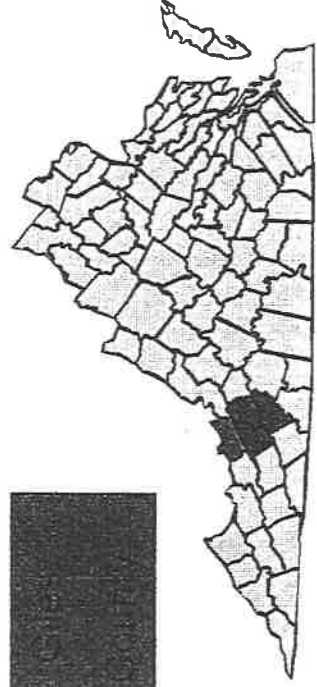
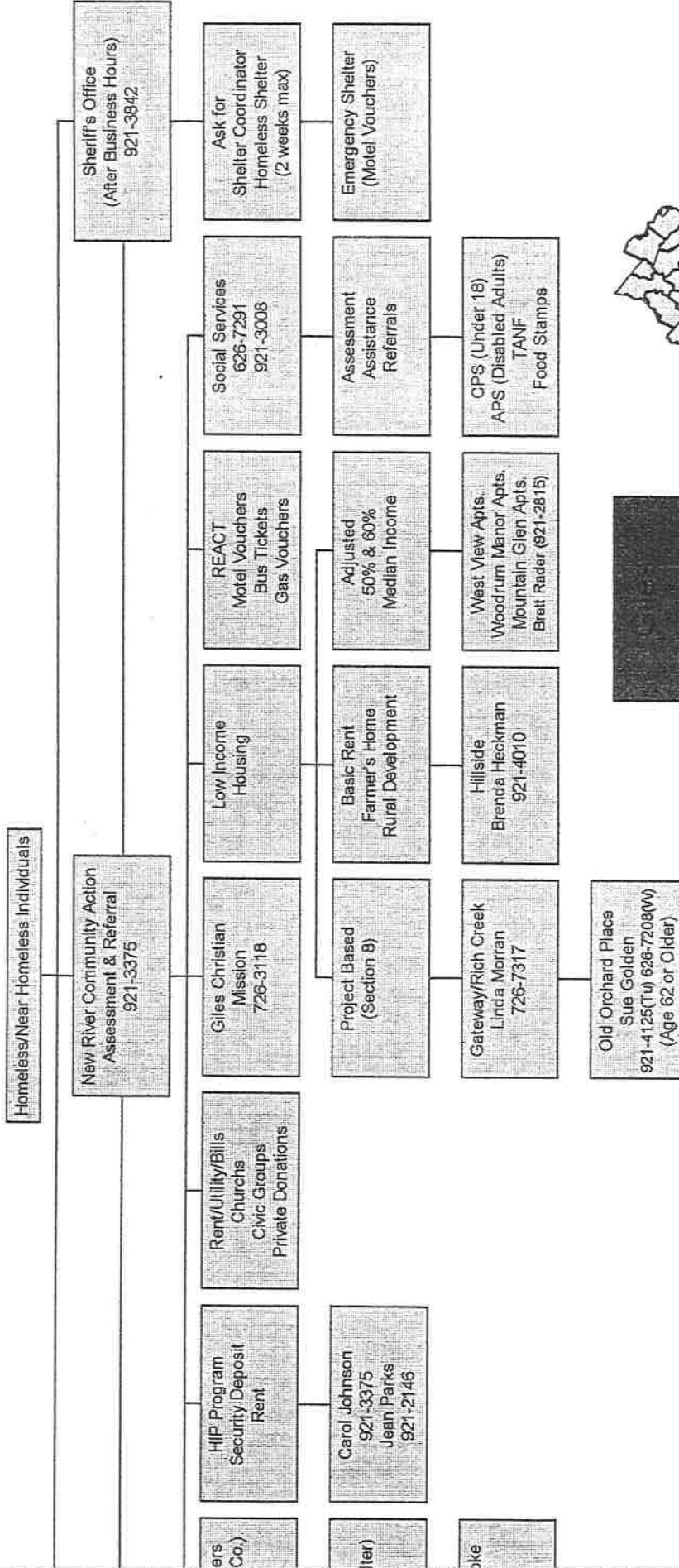
# Available to the Homeless in the New River Valley of Virginia

## CITY OF RADFORD



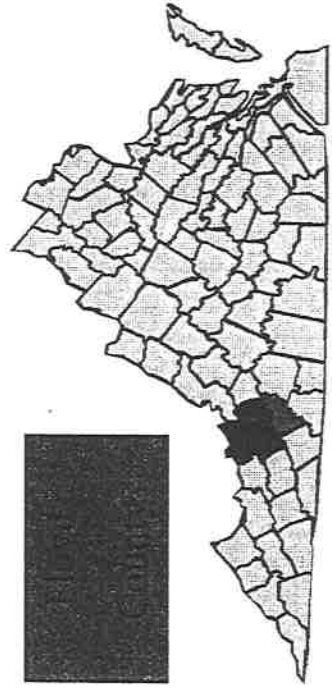
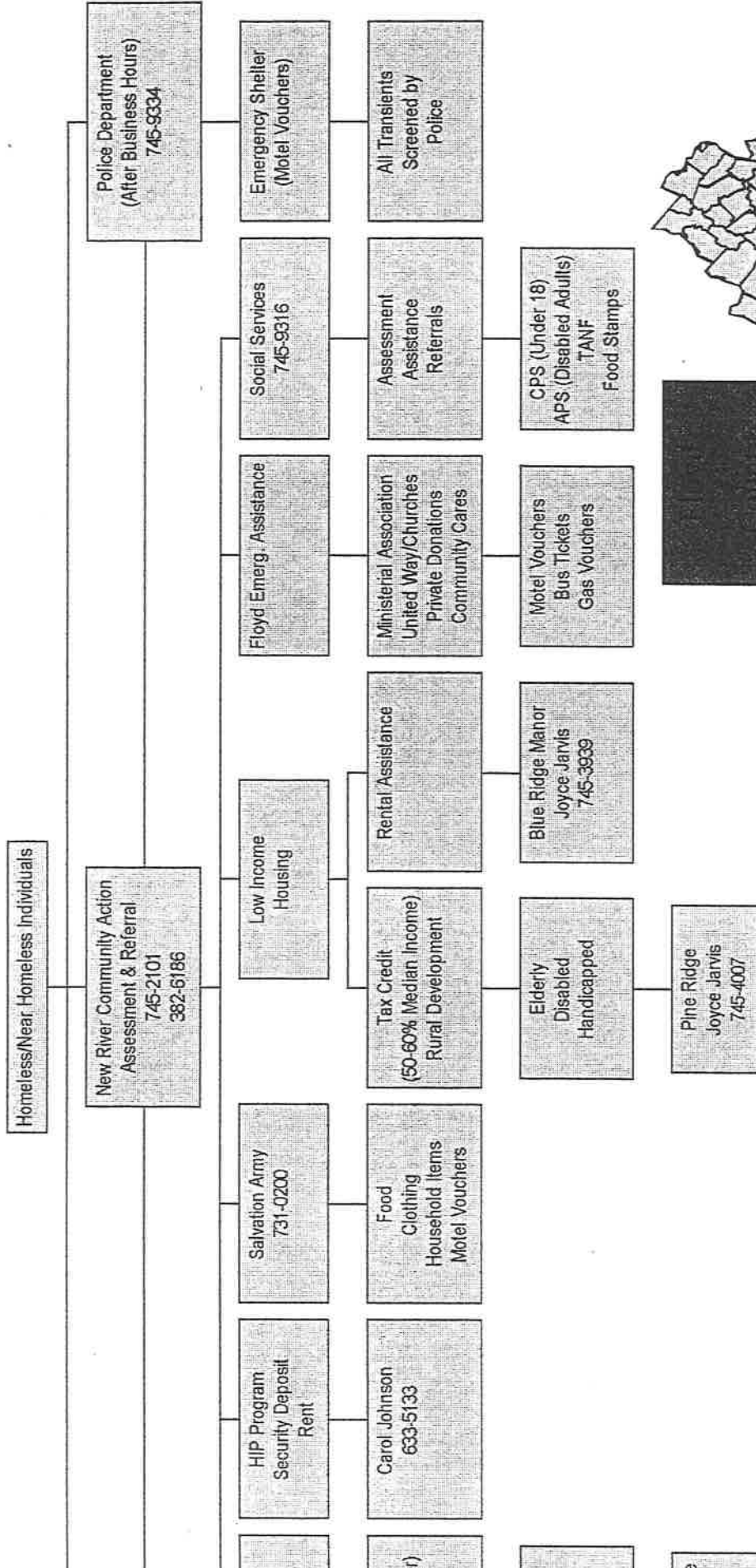
# Available to the Homeless in the New River Valley of Virginia

## GILES COUNTY



# Available to the Homeless in the New River Valley of Virginia

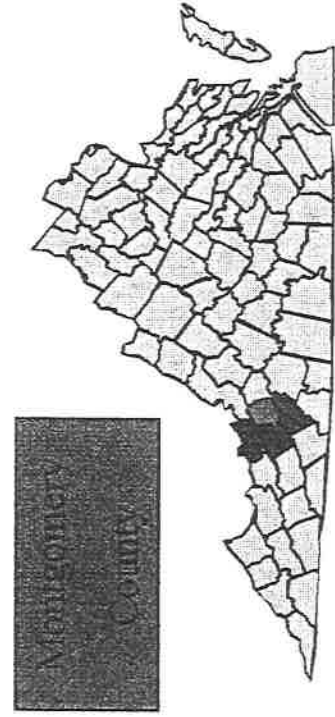
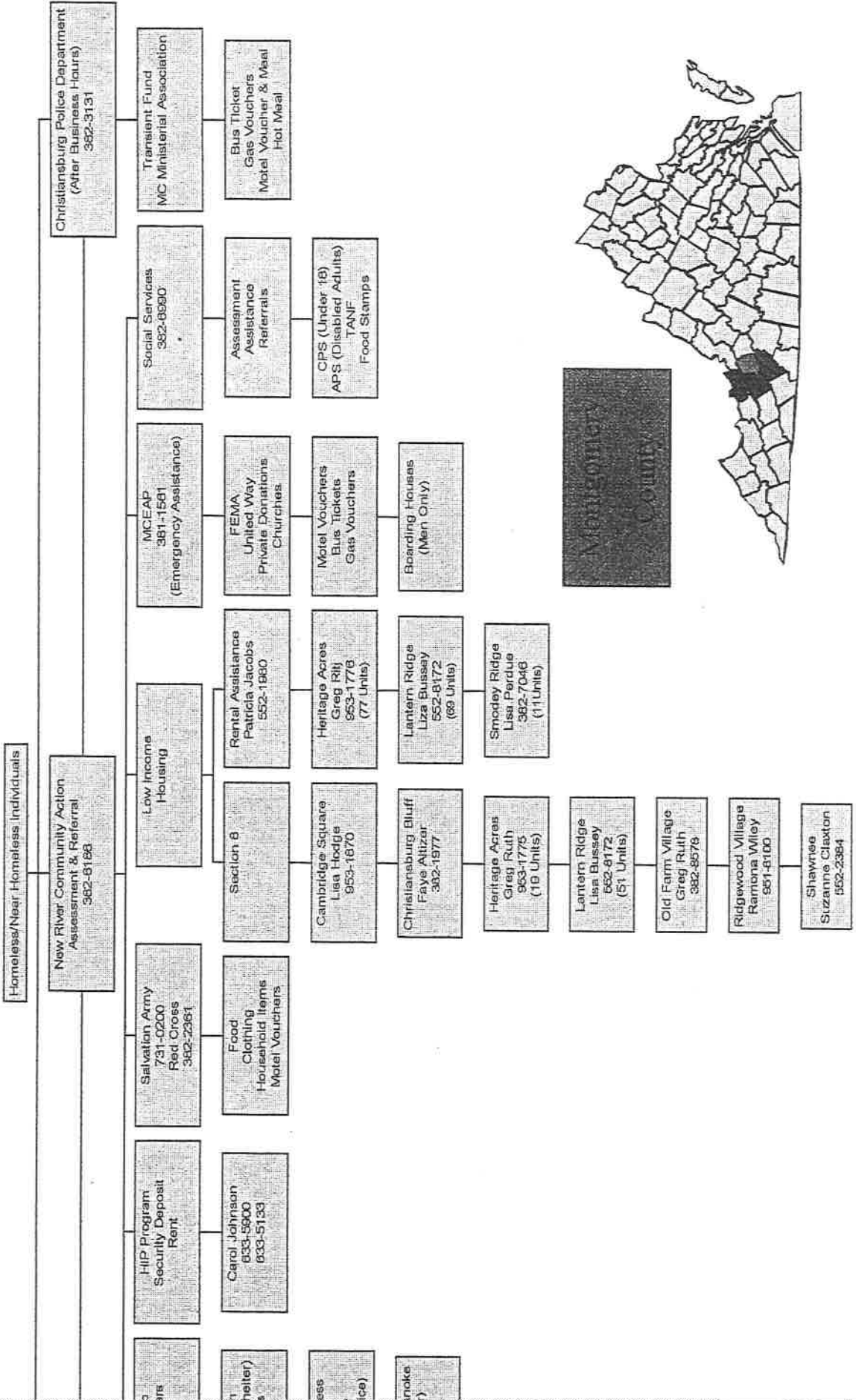
## FLOYD COUNTY





# Available to the Homeless in the New River Valley of Virginia

## MONTGOMERY COUNTY



## Continuum of Care: Gaps Analysis - New River Valley

		Estimated Need	Current Inventory	Unmet Need/ Gap	Relative Priority
Individuals					
Example	Emergency Shelter	115	89	26	M
Beds/Units	Emergency Shelter	11	6	5	High
	Transitional Housing	7		7	High
	Permanent Supportive Housing	N/A			
	Total	18	6	18	High
Supportive Services Slots	Job Training	N/A			
	Case Management	18	6	12	High
	Substance Abuse Treatment	N/A			
	Mental Health Care	N/A			
	Housing Placement	N/A			
	Life Skills Training	N/A			
	Other				
	Other				
Sub- populations	Chronic Substance Abusers	N/A			
	Seriously Mentally Ill	N/A			
	Dually-Diagnosed	N/A			
	Veterans	N/A			
	Persons with HIV/AIDS	N/A			
	Victims of Domestic Violence	9	6 beds	3	High
	Youth				
	Other				

## Persons in Families with Children

Beds/Units	Emergency Shelter	19	20		Low
	Transitional Housing	21		21	High
	Permanent Supportive Housing	N/A			
	Total	31	20	21	High
Supportive Services Slots	Job Training	N/A			
	Case Management	31	20	11	High
	Child Care	N/A			
	Substance Abuse Treatment	N/A			
	Mental Health Care	N/A			
	Housing Placement	N/A			
	Life Skills Training	N/A			
	Other				
Sub- populations	Chronic Substance Abusers	N/A			
	Seriously Mentally Ill	N/A			
	Dually-Diagnosed	N/A			
	Veterans	N/A			
	Persons with HIV/AIDS	N/A			
	Victims of Domestic Violence	19	20 beds		Low
	Other				
	Other				

**5. b. Process for completing the Gaps Analysis**

Neither the New River Valley Region nor the individual localities have a Consolidated Plan, so we were unable to refer to that for the Gaps Analysis. 1990 Census Data found three homeless persons in the New River Valley. The Housing Partnership felt this to be a gross under-representation of the population. The housing and service providers in the region do not collect "point in time" data. Rather they collect annual data on the number of households served. This could not be translated into "point in time" data as many families were served at several points in time, but only counted once in an annual report.. To document the requested information, participants in the Housing Partnership were asked to collect data for housing and service requests on April 14. New River Community Action and the Women's Resource Center responded. Other providers of supportive services and representatives from other sub populations did not respond. The Housing Partnership worked through a prioritization process. Those priority rankings were consistent with the gaps analysis finding, so the Partnership assigned the priorities shown reflecting the earlier rankings.

The prioritization of gaps were determined to be:

1. Transitional Shelter and Services
2. Adequate Emergency Shelter and Services
3. Transportation
4. Central dissemination of information
5. Affordable/Accessible Child Care (including hours other than 8:00-5:00 M-F)

5.c.

## Continuum Of Care: Project Priorities

Project Sponsor	Project Name	Numeric: Priority	Requested Project: Amount 3 yrs.	Program (Check only one)				
				SHP	SHP	S-C	S-C	SRO
				new	renew	new	renew	new
Women's Resource Center of the New River Valley, Inc.	Transitional Housing <sup>1</sup> and Supportive Services	1	\$383,985	X				
		1						
New River Community Action	Homeless Supportive Services	2	336,446	X				
		3						
		4						
		5						
		6						
		7						
		8						
		9						
		10						
		11						
		12						
		13						
		14						
		15						
		16						
		17						
		18						
		19						
		20						
		21						
		22						
		23						
Total Requested Amount:			\$720,431					

**5. d. How each project will fill a gap in Continuum of Care System**

**Project # 1:** There are currently no transitional housing or supportive services in the New River Valley for victims of domestic violence. The Women's Resource Center's proposed project for Transitional Housing for victims of domestic violence in the New River Valley will fill this gap. This project will provide housing and extensive case management, counseling, and educational services on site at this facility and add supportive services to eight new apartment units for victims of domestic violence in Pulaski and Giles owned by VMH, Inc. and Giles County Housing and Development Corporation respectively.

**Project # 2:** There are currently no case management supportive services for the homeless (who are not victims of domestic violence). The Homeless Supportive Services' proposed project for Homeless Case Management will fill this gap. This project will help the homeless get to emergency housing (motels) and then to the next possible housing. It will also help the homeless with other needs such as food, clothing, and the accessing of other regional services.

**e. Relationship between project priorities and the Gaps Analysis chart**

There is a direct relationship between the priorities in the gaps analysis and the project priorities. The highest priority gaps were transitional housing supportive services and these are the two high priority projects.

**f. Describe the method, process, and any criteria used to determine each project priority.**

The Housing Partnership for the New River Valley, made up of 40 people representing 26 organizations, met approximately every other month for 19 months to discuss the needs of the homeless in the New River Valley. We also conducted a survey of regional programs. After almost a year of preparation, we had an open work session to list and analyze the services needed and services-in-place. Small and large group work was done and each of the 35 participants helped. The expertise of these community and agency members was relied upon because they are the front-line workers and know the most about the topic. Lists were written on newsprint and placed in front of the group. From there, it was not difficult to identify the gaps in service. These gaps were worded as potential projects. Using colored dots for first, second, and third priority, each participant placed dots on their choice. First priority was awarded 5 points, second priority, 4 points, and third priority was awarded 3 points. After everyone placed their dots, a numerical total was established for each project. The top five projects are listed in Project Priorities. Work papers and minutes of this session are included as Attachment 1.

**g. Describe how the project priority selection process was fair and gave equal consideration to projects proposed by non-profit organizations.**

We believe the process was fair because the session at which the final listings, votings, and prioritizing were done included about 35 representatives of 23 private and public organizations. It was an open session at which everyone's comments and suggestions were respectfully received. It was a very productive session and everyone participated.

After the gaps in service were identified by the group, everyone voted their choices and numerical values were attached.

6.a.

## Continuum of Care: Project Leveraging

(Complete only one chart for the entire Continuum of Care and insert in Exhibit 1)

Project Priority Number	Name of Project	Type of Contribution	Source or Provider	Value, Written Agreement-Yes	Value, Written Agreement-No
1	WRC Trans. Housing	6 apartment units	VMH, Inc.		\$200,000
1	WRC Trans. Housing	2 apartment units	Giles County Housing & Development Corporation		75,000
1	WRC Trans. Housing	8 apartment units	Community Development <u>Block Grant</u>		550,000*
2	NRCA Homeless Supportive Svc.	Emergency Assistance	Montgomery Co. Emergency Assistance Program		5,000
2	NRCA Homeless Supportive Svc.	Emergency Assistance	Pulaski Co. Emergency Needs Task Force		5,000
*	Amount of CDBG not used for match				
				Totals	\$835,000

6.     **b. How mainstream resources will be used to fill other Continuum of Care gaps not addressed by proposed projects**

The gaps not addressed include:

**1. Emergency Shelter.** FEMA, United Way, local government, and private funds will continue to be used to provide emergency housing in motels to the homeless. Local government, CVC, and private funds will be used to fund the region's only emergency shelter, The Haven, for sheltering non-domestic violence victims.

**2. Transportation.** The private organization Med-Ride will be used to transport the homeless to doctor's appointments. This organization is funded by private sources.

**3. Central Dissemination of Information.** In addition to Homeless Supportive Services and the Women's Resource Center, RAFT, a generic 24-hour hotline, will disseminate information to homeless callers. RAFT volunteers will be trained by Housing Partnership members on the region's Continuum of Care. RAFT is a program of New River Valley Community Services, and, as such, is funded by the United Way and state funds.

**4. Child Care.** Private daycare facilities will continue to be used. A new organization in Radford, *Beans & Rice, Inc.*, is working with the Radford Department of Social Services to develop daycare for the hours of 3:00-12 midnight. Funding will need to be from a variety of sources.

7.     **Bonus for Empowerment Zones**

Not applicable.

## **ATTACHMENTS**



*October 23, 1997  
First Meeting*

GILES COUNTY  
DEPARTMENT OF SOCIAL SERVICES  
P.O. BOX 529  
PEMBROKE, VIRGINIA 24136

LINDA B. BOGGS  
Director

Phone 626-7291

October 29, 1997

TO: Women's Resource Center Transitional  
Housing Task Force Committee Members

FROM: Linda Johnson, Committee Chair

Please mark your calendars for the next Committee meeting. It will be held **November 13, 1997 at 2:00 p.m.** at the WRC Administrative Offices in Radford.

We held our first meeting on October 23 at the Giles Department of Social Services Board Room. We accomplished a lot of good preliminary work surrounding the issue of transitional housing specifically and housing assistance in general. Since that time, we have added three new members to our committee: Dave Rundgren, Robbie Campbell, and Amanda Griffith. It is my hope that future meetings can be rotated between Radford and Giles in order to accommodate all the committee members' busy schedule.

Attached to this note are the current committee members. If you have questions, please call Pat or me.

Thank you for your willingness to work toward the goal of independence for our WRC families. Your expertise is invaluable.

GILES COUNTY  
DEPARTMENT OF SOCIAL SERVICES  
P.O. BOX 529  
PEMBROKE, VIRGINIA 24136

LINDA B. BOGGS  
Director

November 13, 1997

2nd Meeting

Phone 626-7291

December 5, 1997

TO: All WRC Transitional Housing Committee Members

FROM: Linda Johnson, Chair

Please mark your calendars for **JANUARY 22, 1998** for our next meeting. We will meet in the **Conference Room** at **Montgomery Department of Social Services Building** in Christiansburg from **2:00 to 4:00 p.m.**

Enclosed is a list of our current committee members.

Thank you for your ongoing work on this most important issue. We have come to realize that transitional housing is a broad problem throughout the New River Valley, not solely for the clients of the WRC.

Wishing each of you a safe and joyous Holiday. I look forward to seeing each of you in January.

January 22, 1998  
3rd meeting

## Transitional Housing Mtg.

In attendance: Pat Brown, Linda Johnson, Nancy Rader, Robbie Campbell, Amanda Griffith, Shannon Gerard, Janaka Casper, Andy Morikawa, Mary Beth, Brenda Young, Beth, Meg, Ann Angert, Leslie Howard.

Reason for mtgs. Women's Resource Center has found it harder and harder to place families using shelter. There is a reduction in Section 8 housing subsidies tied to specific properties, college student population exasperate housing problems, property managers look at financial criteria in qualifying applicants and this also complicates placements.

### Questions?

- Can PDC help determine number of units actually needed?
- How do we stabilize LMI housing that can be counted on?
- Is it possible to build or buy additional transitional housing w/ funds currently available?
- How do we subsidized transitional housing costs until families can afford to carry some or all of costs?

We know that information regarding needs assessments is available. PIC and NRCA have done needs assessments.

The NRV Family Shelter is trying to move ahead with true transitional housing

There will be a Continuum of Care application available from HUD in March of 98

Continuum of Care (COC) needs to give the whole scope of housing needs, from emergency shelter, seasonal housing needs, affordable housing, housing for victims of abuse. To apply there needs to be a continuum of care plan that involves all the players, all housing providers, bankers, service providers, it was agreed that the PDC is a good forum to bring players together. The COC will have to prioritize need.

Warren Smith has recently sent letters to PDCs asking them to help w/ COC plans. Shannon (DHCD) will work with us to develop it.

A 50% match is needed, HOME is a good source of those funds. Janaka stated that a good plan would be to use COC \$ for operation costs (OC): Year 1 covers 100% OC; Year 2 covers 75% OC; Year 3 covers 50% OC VHDA has \$ for rural areas brick and mortar

Shawn McNamara at DHCD has \$ for a Planning Grant to help w/ COC.

Meetings with community are an important part of building a COC. It was suggested that we invite John Baker at HUD to attend an informational meeting. It was suggested that Gary Christy from the Rappahonoc PDC be invited. A short list of who else could be invited to the table was discussed and they included Food Banks, Mental Health, VEC, Homeless Providers, Bankers, AIDS Coalition, Property Managers, Developers, Realtors, Ken Bondurant, Peggy Eaton, other DSS.

310,90 11 March 5 1998  
4th meeting

Minutes of the March 5, 1998 meeting of the newly formed Housing Partnership of the New River Valley

Introductions were made of all members present at the meeting for the Housing Partnership of the New River Valley. See attached attendance sheet.

Pat Brown gave a brief summary of the previous meeting. Previous discussion centered around bringing new members to the meeting from varied disciplines. Secondly, it was discussed that Mr. Baker could possibly meet with the group to discuss the "Continuum of Care" Philosophy. That is, an overall picture of assisting low- to moderate-income families with housing from homelessness to self-sufficiency. The trend is now that housing efforts should be on a regional level, as opposed to individual localities working independently.

There is a planning grant is available. The amount is approximately \$25,000. The grant is available to "government agencies." That is, a government (town, city or county) may apply. A non-profit could not make the application. The planning grant pays for the following:

1. Application
2. Needs assessment
3. Building/project design

The group meeting today needs to define its purpose and create a name.

The purpose of the group was define after much discussion to "to establish a system for the provision of safe, affordable housing for low- to moderate-income households within the New River Valley."

One pre-identified housing need in the New River Valley is to provide transitional housing. Transitional housing has many components, such as

- Emergency, short-term housing--30-90 days in length
- Transitional housing for up to two (2) years
- Permanent housing, including assisted housing
- Self-sufficient housing

Some of the problems identified with low- to moderate- income housing include:

- Closing of mobile home parks
- Decreased money for assisted units
- Owners selling out
- Decreased availability of assisted units
- CREDIT problems
- Low- to moderate-income households seen as high risk
- Difficulty with landlord-tenant relations

It was suggested that officials from local governments become part of the group in order to make the governments more aware of housing issues and to gain support. It was discussed when and at what point should local governments become involved.

It was discussed that a local government will be approached to apply for planning grant. It was decided that Narrows, Christiansburg and Pearisburg would be approached initially regarding the planning grant. Dave Rumdgrun

and Lesley Howard with the New River Valley Planning District Commission will make contact with these governments.


The group decided to call itself "Housing Partnership for the New River Valley." Pat Brown was elected Chairperson. Patricia Jacobs will serve as notetaker.

The group will divide into two sub-committees in the near future. One committee will develop a Continuum of Care for the New River Valley. The other will focus on the Needs Assessment.

Robbie Campbell stated that Mr. Baker will be giving a workshop on "Continuum of Care" in Wytheville in the near future. She will provide more information as it becomes available.

It was also discussed that it is important to include low- to moderate-income households in the group. Pat Brown will follow-up on how this can be addressed while be sensitive to the needs and confidentiality of these households.

Finally, a future meeting was discussed. The first Thursday appears to be a good day.



Patricia Jacobs

June 29, 1998  
5th meeting

# HOUSING PARTNERSHIP FOR THE NEW RIVER VALLEY

"To establish a system for the provision of safe, affordable housing for low to moderate income families within the New River Valley of Virginia"

June 29, 1998

Meeting Called to Order at 2:00 p.m. by Chairperson, Pat Brown,

Introductions were made. In attendance were: Linda Johnson, Amanda Griffith, Meg Goepel, Carrol Reid, Janaka Casper, Andy Morikawa, Mary Hall, Ken Bondurant, Mary Beth Pulsifer, Pat Brown, and Brenda Young.

**Planning Grant:** The PDC submitted a \$25,000 to DHCD sponsored by the Town of Narrows requesting a planning grant to pay the PDC to pull together information needed to pursue money for Transitional Housing in the NRV. This grant would fund the completion of an extensive needs assessment through identifying funding sources to implement identified solutions. To date, no announcements have been made concerning grant awards.

**New River Family Shelter:** Amanda reported today that the 3 unit transitional housing structure they had is closed/demolished. They are anticipating opening *THE HAVEN* in Blacksburg in September 1998. *THE HAVEN* is a 4 family/20 bed emergency shelter (30 to 90 days), located at 103 Penn Street (behind the Blacksburg United Methodist Church). This shelter will serve the entire NRV, pending approval of a special use permit. Amanda has hired a "Program Coordinator" for *THE HAVEN* who will handle volunteers, the advisory council, etc. Referral will be taken through New River Community Action in Christiansburg. Screening and Referral processes are not yet in place.

**Continuum of Care:** (refer to hand-out) In summary, to apply for any housing money, this element must be in place. The players needed to be included in the process of identifying and meeting housing needs in the NRV were suggested. If this organization decides to apply for Transitional Housing money in February of 1999, the Continuum of Care must be completed. Therefore, all Partnership members are asked to "sign-up" for one or both existing committees:  
1. Transitional Housing Committee (Linda Johnson-chair)  
2. Continuum of Care Committee (Patricia Jacobs-chair).

Next Meeting: Monday, September 28, 1998 at 2:00 p.m. at the WRC Administrative Offices.

Community Foundation of the New River Valley • Giles County Housing and Development Corporation • Giles Department of Social Services  
Montgomery County Office on Youth • New River Community Action • New River Valley Family Shelter  
New River Valley Planning District Commission • Section 8 Housing - Floyd • Section 8 Housing - Giles • Section 8 Housing - Montgomery  
Section 8 Housing - Pulaski • Virginia Department of Housing and Community Development • Virginia Mountain Housing  
United Way of Montgomery, Radford and Floyd • Women's Resource Center of the New River Valley