



ROCK-N-ROSE



NEWSLETTER OF THE EAST TEXAS GEM & MINERAL SOCIETY

PAGE 1

VOLUME 40

TYLER, TEXAS

ISSUE 4

APRIL 2014

Coming Shows, 2014

April 25-27—HOUSTON, TEXAS:
Annual show; Fine Mineral Shows;
Embassy Suites Hotel; 2911 Sage
Rd., near The Galleria-Houston

April 26-27—LUBBOCK, TEXAS:
56th Annual Show and Sale; Lub-
bock Gem & Mineral Society; Lub-
bock Memorial Civic Center

May 3—ARLINGTON, TEXAS:
Annual Club swap meet; Arlington
Gem & Mineral Club; clubhouse;
1408 Gibbins Rd.

May 24-25—FORT WORTH,
TEXAS: 62nd Annual Show; Fort
Worth Gem & Mineral Club; Will
Rogers Memorial Center; Amon G.
Carter Exhibit Bldg.

June 7-8—GRAPEVINE, TEXAS:
Annual show; Arlington Gem &
Mineral Club; Grapevine Con-
vention Center.

INSIDE THIS ISSUE

2. April Meeting Minutes
3. Club Matters
4. History of The South Central-
Federation of Mineral Soc.
5. Tips and Facts
6. Bench Tips by Brad Smith
7. Officers and Directions

PRESIDENT'S MESSAGE

Club activities are kind of winding down and it's time for a break. Spring is finally here, the weather is great, and I'm going to get out there and do some rock hunting. Looks like I will miss the Topaz Crystal hunt at Mason, I'm going over to Alpine, Texas and join Terry Roberts for 10 days of rock hunting at the Walker Ranch and a few other sights.

Any members that are not receiving ETGMS updates from me please email me at kpolve@eastex.net. I try to send out reminders and updates for fieldtrips and other club related events, but I have a few bad email addresses, or I don't have the email address for some of you. If you don't have an email account, but would like to know about these updates and reminders, please call me so I can start notifying those members. I would like to keep all of you as informed as you would like to be. I know it is hard for all of us to make all the meetings, and the newsletter is a great source to keep us informed, but sometimes things change between newsletters.

Randy Harmon's field trip for April 19th we'll be heading to a site near Mason, Texas to hunt Topaz crystals. Give Randy a call, if you need more information or have any ideas for future hunts. Any member that thinks they might want to attend any of the fieldtrips, call Randy or put your name on the list at the monthly meeting. This doesn't mean you have to attend the hunt, but it does give Randy your phone number so he contact you with any updated info or changes to the upcoming fieldtrips.

Any person interested in attending any ETGMS sub-group meetings, such as the Lapidary/Jewelry sub-group, must be a paid member of ETGMS. Also anybody planning to attend an ETGMS fieldtrip must also be a paid ETGMS member. With the exception, member from other gem & mineral clubs that are members of the SCFGMS that make our event a club sanctioned event, may be allowed to join our fieldtrip.

And another reminder, we have the Tyler Library display reserved for May. I would like to see other members get involved when we set up the display in May. There are a lot of talented members, and I would like you to show off some of your beautiful creations, and items you have collected to the public. The set up day will be May 1st. If you have items to show, but can't make it to the library on that day, we can help you.

The Program for the May meeting will be brought by Becky Whisenant on her trip to South Dakota and Crazy Horse Memorial.

Kinney Polve



APRIL MEETING MINUTES

Meeting was called to order on April 7, 2014 at 6:45 pm by President Kenny Polve. Minutes were approved as printed in the newsletter Susan Burch made the motion and it was seconded by Penny Hawkins.

Bill Faulkner gave the treasurer's report.

Lapidary Sub Group: Terry Roberts reported that there would not be a meeting in April. Terry will be out of town on a trip to West Texas. The next meeting will be May 10th at Terry's house at 2:00 pm.

Mineral/Fossil Sub Group: This group is looking for a volunteer leader.

Field Trips: Make sure that Randy Harmon has your name and phone number anytime you are interested in going on a field trip. This is important so that if changes are made in the plans he can notify you. Also he can assist you if you are wanting to carpool. Next Field Trip is April 19th to hunt for Topaz near Mason, Texas. Please sign up.

Newsletter: Susan Burch asked for help from everyone by sending in articles for the newsletter.

Old Business: The club's participation in the Tyler Maker's Fair was very successful. Wire wrapping demonstrations were given and some attending tried their hand at wrapping. Many critters were made by children of all ages. The weather on April 5th was cold so attendance at the Rock Swap was less than had been hoped. We will look into a different location for next year. Terry Roberts and Randy Harmon will set up display cases at the Tyler Public Library on May 1st. They would appreciate your help on that day and any contributions of material that you can provide. The American Federation annual meeting will be held in Tulsa, Oklahoma in July.

A new membership list is being worked on and will be put on the club's web page.

New Business: The Troop Library has asked for a volunteer to present a program for their Summer Reading Program on one of several Wednesdays. Please let Kenny know if you can do this.

Announcements: Terry Roberts asks for everyone to step-up and volunteer. Help is always needed for our many activities and programs. He also stated that members are happy to answer questions and assist others in their projects. Feel free to ask questions.

David Russ introduced himself and stated his interest was in geological maps. If you share this interest please visit with him.

Next Meeting: The next meeting will be May 5th. The program will be given by Becky Whisenant.

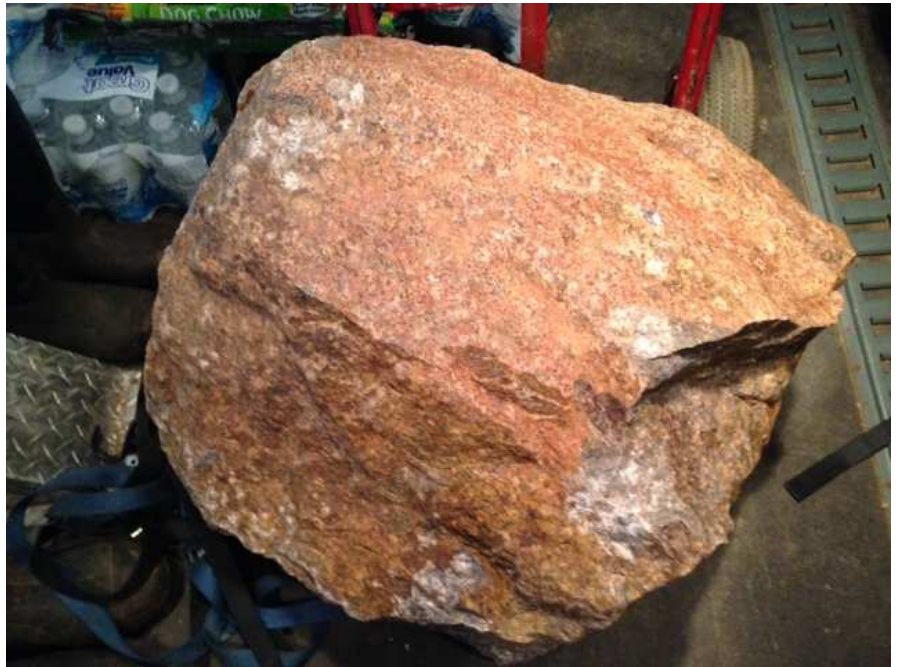
A motion was made by Becky Whisenant and seconded by Michael Howe to close the Business meeting. We adjourned to have refreshments and door prizes. A program followed with slides made by Kenny Polve of the Tyler Maker's Fair and the Rock Swap.

Respectfully submitted,
Carolyn Davis



ROCK HUNTING

On the way to the Alpine, TX rock hunts I stopped by Llano and picked up a little piece of Llanite. About a 400 pound piece. Kinney



TYLER MINI MAKER'S FAIRE

We had a great day at the Tyler Mini Makers Faire, March 29. Because this was a new event for ETGMS, we didn't know what to expect. We started out with Vicky and David Polve helping build Rock Critters with the attendees.

Terry Roberts was demonstrating wire wrapping. And Elsa Jerger was teaching and helping attendees quick wire wrap rocks. After a while Kinney Polve took over teaching the quick wire wrap, until relieved by Lani and Luarel Lanchester. Ryan Lanchester gave them a hand making critter legs. It was a busy day, but a lot of fun. Our group was told as we were packing up that ETGMS's booth drew the most attention throughout the day. A special thanks to the members that participated in this event. Rock Obsessed





THE HISTORY OF THE SOUTH CENTRAL FEDERATION

Compiled by:
Mignon Wagnor, 1943-1992
Paul W. Good, 1993-2010



The South Central Federation, as it is known to us today, had its beginning in December, 1943 in San Angelo, TX, in the home of Mr. and Mrs. W. E. (Bill) Curry. The Organization was named "THE STATE MINERAL SOCIETY OF TEXAS".

W. E. Curry was elected the first President, and Mrs. Viola Block was the first Secretary/Treasurer. The first convention and show was held in 1944 in San Angelo, TX, in the Ball Room of the Plaza Hotel.

Our information on the first few years is rather scanty, but we do know that it was decided at the first show in San Angelo, TX to hold annual conventions and shows. No show was held in 1946 due to the polio scare, so the 1947 show and convention may be considered as the first annual event of the Federation. It was during this convention, the organization affiliated with the Rocky Mountain Federation of Mineral Societies.

The annual conventions and shows were held alternately between San Antonio and Austin from 1947-1951. Finally the tradition was broken and The Fort Worth Gem & Min. Club, hosted the 1952 convention and show.

A joint convention and show was held with the Rocky Mountain Federation in Houston, TX, which was hosted by the Houston Gem & Min. Soc. At this convention the organization changed its name to TEXAS REGIONAL FEDERATION OF MINERAL SOCIETIES, INC. The Federation was chartered under the new name on April 8, 1953. Due to attaining the status of a Regional Federation, membership with the RMFMS was discontinued.

In 1954 at the show held in Odessa, TX, the Federation voted to become a member of the American Federation of Mineralogical Societies, making it the 6th Regional Federation. Also at the convention the Federation changed its name to SOUTH-WEST FEDERATION OF MINERAL SOCIETIES.

The first Federation bulletin that was kept in the Federation files was published by the Secretary/Treasurer, Pearl Wasser. It included a short note on the show in Odessa and a promise of a good show in Corpus Christi in 1955. Once again the name of the Federation was changed to: TEXAS FEDERATION OF MINERAL SOCIETIES, INC. (TFMS) at the ninth annual convention and show in Corpus Christi, TX. Nine clubs were now affiliated with this Federation.

The 1958 convention and show was the first time the Federation had hosted a combined American (AFMS) and Texas Federations show. The host club was the Dallas Gem & Min. Soc. One of the clubs represented at this show was the Rollin' Rock Club, that unique club where members meet only once a year (officially) at the annual show and convention. The next Federation Newsletter that we have a re-cord of was written before May 1958, as the last sentence states, "so long---see you in Dallas May 1". This newsletter informs of the activities and progress of the Federation.

Continued on page 5



At the Federation show in Amarillo, TX, in May, 1963 , the Constitution was changed to permit clubs from Arkansas and Louisiana to join the Federation.

At the AFMS/TFMS show in Fort Worth, TX, June, 1970, the name was changed to SOUTH CENTRAL FEDERATION OF MINERAL SOCIETIES, INC., (SCFMS). One special exhibit, at this show, was “The Moon Rock”.

The SCFMS convention and show traveled for the first time out of Texas for the April, 1971, show, hosted by the Gem & Min. Soc. of Louisiana.

In 1973 the SCFMS was presented with a 100% plaque for their contributions to the American Federation Scholarship Foundation. This was the year the Federation had 42 clubs with over 3,000 members.

In 1982 the combined AFMS & SCFMS show was held on July 8-11, 1982, in Houston, TX. By this time the SCFMS had given more, percentage wise, to the AFMS Scholarship Foundation than any other member Federation.

Bids for future Federation shows were accepted through 1989 at the 1983 show in Dallas. (Seven years in advance is very impressive).

The SCFMS celebrated its 50th Anniversary in 1993 , in Arlington, TX. The convention and show was hosted by the Arlington Gem & Min. Club. The History of the SCFMS from 1943 to 1993 were on display for all to see.

February, 2003 , the SCFMS Convention was hosted by the Clear Lake Gem and Min. Soc. at the Pasadena Convention Center and it was a great success. The Federation celebrated its 60th year.

The South Central Federation of Mineral Societies includes gem and mineral clubs and societies in Texas, Louisiana and Arkansas.



As we come to the close of 2013, it is time for us to close the History Book for another year. The ARK-LA-

TX Gem & Min Soc., Bossier City, LA hosted the show in August of this year. It was a good show. During the annual meeting, the SCFMS Constitution, By-laws and Operating Procedures were revised and brought up to date.

Baton Rouge Gem & Min Soc., will host the 2014 show. The 2015 show will be hosted by the Austin Gem & Min Soc., which will be an AFMS/SCFMS Combined show.

Via SCFMS Newsletter, Nov.-Dec. 2013.



A PETRIFIED FACT by Ed Wengerd

Many pieces of petrified wood, especially those from the northwest, have a center that looks like wood, but with a layer of chalcedony or pumice between the center and the outside. This indicates that the tree was green when it was buried in hot ash. The water in the green wood evaporated making the wood shrink. The outside was made into a cast by the heat, so the areas left between the cast and the wood were filled with chalcedony, making beautiful pieces of petrified wood.



from MOROKS Newsletter, to us by The Redstick Rockhound News, Feb 2013; via SCFMS Newsletter, Nov.-Dec. 2013



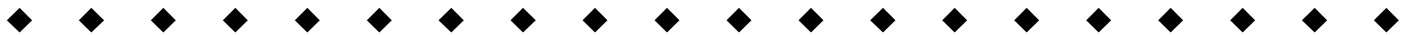
FRIENDS AND GEMS

Rockhounds who have been in the hobby for some time begin to realize that the most precious gems they have collected are the friends they have made along the way.

Some are still in the rough, some are highly polished, some are dull and colorless until viewed in the right light.

And like every gemstone in nature, they also have inclusions, sometimes referred to as flaws. If we enjoy them as they are, realizing that their warmth and beauty make up for their imperfections, if we concentrate on their better aspects, the flaws become insignificant and merely marks of individuality.

From Golden Spike News; via SCFMS Newsletter, Nov.-Dec. 2013.



DID YOU KNOW?

Hmmm.... Most people think that there are three kinds of rocks, namely igneous, sedimentary and metamorphic. To a rockhound there are still three, but not the three mentioned above. The three, to a rockhound are, "pretty rocks, interesting rocks, and pretty interesting rocks." (Swirlite could very well be one of those.)

Hmmm.... For that glass finish on tiger eye, polish once, dry the stone then put a drop of vinegar on it. Let it dry a few minutes, then give it a second polish.

Just thought you'd like to know.

(From The Redstick Rockhound News, Feb 2013; via SCFMS Newsletter, Nov.-Dec. 2013.)



BENCH TIPS BY BRAD SMITH

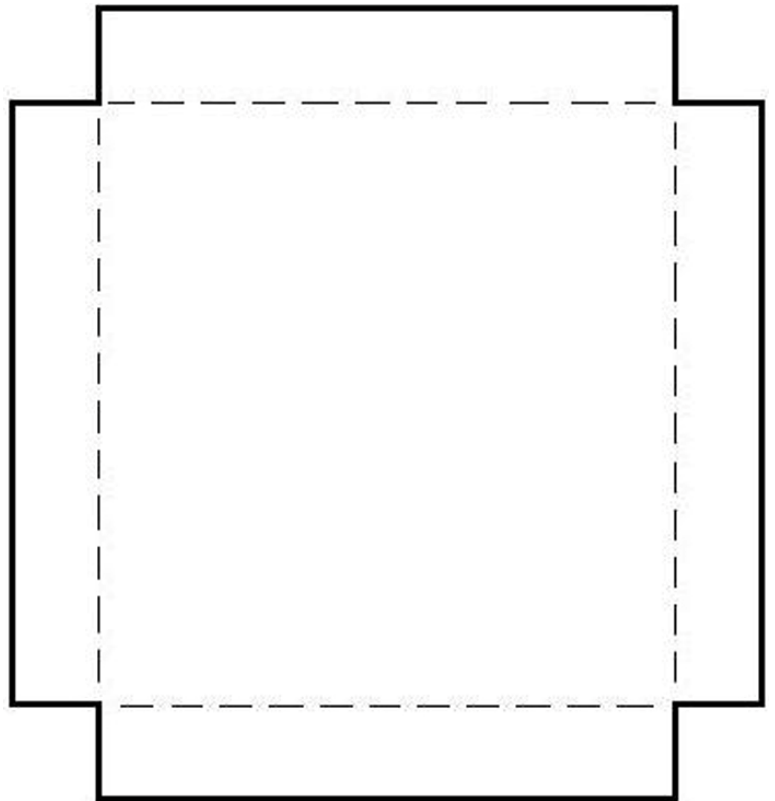
REVOLVING SOLDER PAD

Often when we're soldering we have multiple pieces on the pad or a single piece and would like to work on several sides of it during the same heat.

One of the ways to deal with this is to put your solder pad onto a turntable. That way you can rotate each piece into position when you need to or can rotate the pad to reach another side of a larger piece.

All you need to make one of these is a piece of aluminum sheet and an inexpensive turn table assembly. A good hardware store will have both, although you can usually find the aluminum in the scrap pile of a local sheet metal shop.

In building a turntable for my 6 inch solder pad, I used a seven inch square piece of aluminum and cut out 1/2 inch notches from each corner. Then I used a bench vice to bend the sides along the dotted lines to form a tray that cradles the solder pad.



QUENCHING

Some jewelers drop the hot piece from soldering directly into the pickle. Do you hear that little hiss? The hot piece sends small droplets of acid into the air. This can rust nearby tools and can't be all that good to breathe either. To avoid this I quench in water. A coffee cup of water at the solder station lets me cool a soldered piece before dumping it into the pickle. It's also useful for annealing metals and for cooling off tweezers.

Please use the following attribution with each publication:

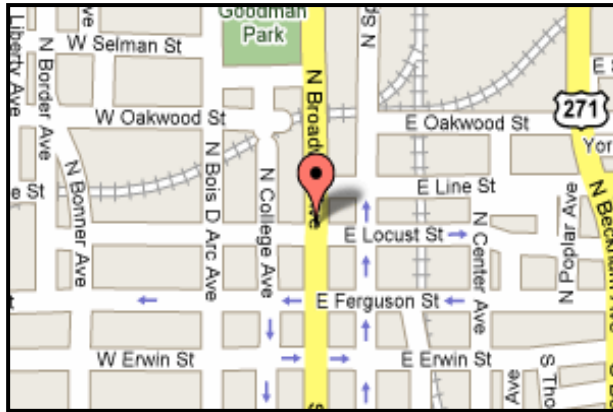
Get all 101 of Brad's bench tips in "Bench Tips for Jewelry Making" on Amazon

Note: If you distribute your newsletter electronically, I'd appreciate the above title of the book to be a live link to <http://amazon.com/dp/0988285800/>



CLUB OFFICERS

PRESIDENT:	Kinney Polve 8665 CR 373 D Henderson, TX 75654	903-646-3189
VICE PRESIDENT	Terry Roberts 12243 Cross Fence Trail Tyler, TX 75706	903-881-5108
TREASURER:	Bill Faulkner 309 Princes St. Whitehouse, TX 75791	903-539-0439
SECRETARY:	Carolyn Davis 110 VZCR 2518 Canton, TX 75103	903-848-1312
FIELD TRIP CHAIRMAN:	Randy Harmon 13621 Shannon Lindale, TX 75771	903-539-0975
SHOW CHAIRMAN:	Keith Harmon 9116 US HWY 84 W Rusk, TX 75785	903-795-3860
CLUB ADDRESS FOR MEMBERSHIP DUES:	East Texas Gem & Mineral Society P. O. BOX 132532 Tyler, TX 75713-2532	



THE EAST TEXAS GEM AND MINERAL SOCIETY MEETS ON THE FIRST MONDAY OF EACH MONTH, UNLESS THAT DAY IS A HOLIDAY, THEN THE MEETING IS MOVED TO THE SECOND MONDAY. WE MEET AT THE DISCOVERY SCIENCE PLACE, 308 NORTH BROADWAY, JUST NORTH OF DOWNTOWN TYLER, TEXAS. MEETINGS BEGIN AT 6:45 P.M.

NOTE TO EDITORS

Feel free to use contents and graphics for non-profit newsletters. Give credit when and where due.

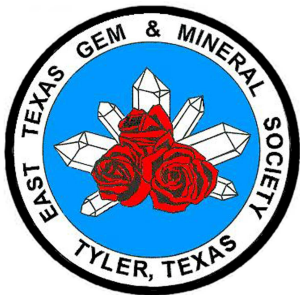
Purpose of the East Texas Gem & Mineral Society

Is to promote the study of geology, mineralogy, fossils and the lapidary arts. The public is always invited to attend all club meetings.

Annual dues are \$10.00 for adults and \$2.50 for juniors.

Please send any info or articles to be included in the newsletter to the Editor by the 15th of the month. Please, keep your address, phone and email information up-to-date, so that we can get the newsletter to you in a timely manner. Out-of-date information costs the club time and money in returned newsletters. If you need an issue dealt with quickly, don't hesitate to call, as this is the best way to reach me.

Thank you... SB



EDITOR: Susan Burch
20427 US. Hwy 69 S.
Alto, TX 75925

E-Mail: rockroseeditor@hotmail.com
Phone: 936-615-5397