

Auction Action Antique News

Online! Always On Time!

Over One Million Hits

www.auctionactionnews.com

Help Recycle,
Buy Antiques!

February 3, 2015 Vol. 20 No. 27

News Periodical Mailed on January 28

Three Day Country Store, Advertising, Petroliana, Native American & Stoneware Auction at Rich Penn Auctions



Soda fountain syrup dispenser, Fowler's Cherry Smash, advertising on both front & back, complete w/Cherry Smash pump, 15"H. Sold for \$3,700.

Continued on pages 16 & 17

Ice cream scoop, heart shaped bowl, invented by John Manos, stamped "Patented Nov. 1925" on inside plate, nickel-plated brass w/wood handle, Rare, Exc working cond, 11"L. Sold for \$4,000.



Article & photos by Rich Penn Auctions

On Friday, October 31st, the Elwell building at the Iowa State Fairgrounds was packed with eager bidders. All were ready for the three day Rich Penn Auction event, featuring the Mark Wilson Collection. The auction was jammed with an abundance of Country Store, Advertising, Petroliana, Native American and a superb selection of Stoneware. The stoneware examples represented the entire production years of Minnesota's Red Wing Potteries.



Native American firearm, most scarce of all Board of Ordnance "Medallion Chief Guns", John Gill, c.1790-1813, walnut & metal w/inlaid silver Chief's medallion, barrel stamped "London" w/other hallmarks too worn to read, flintlock mechanism stamped "Gill" & hallmark of pig's head & arrow in horn, VG condition w/wear on stock & barrel, 54"L. Sold for \$4,000.



1957
Chrysler
Saratoga 2-door
hardtop, a

"Forward Look" design by Virgil Exner, 285hp w/a 354 Spitfire V8, power steering & power brakes, push button automatic transmission, body is all original sheet metal from nose to fins, mileage unknown, VIN# L5710942, Exc cond. Sold for \$8,000.

Good Weather, Great Crowd, at N.L. Promotions 2015 West Bend Antiques Show

Article & photos by Brian Maloney

The Washington County Fair Park Pavilion once again played host to one of the best winter antiques shows around - the N.L. Promotions West Bend Antiques Show. Show organizers Nona and Skip Knapp know how to put together a great antiques event. They should, it's now N.L. Promotions' thirty-fourth year in the business, starting with the now famous Elkhorn Antique Flea Market back in 1982. They know the secret to a successful show is in the dealers, and they put together a fantastic group for this one. The two-day show, held this year on January 17th & 18th, has grown to be one of the Badger State's must-attend antiques events.

Continued on pages 6, 7 & 8

Colorful vintage
breweriana from
Chic Mantiques:
the Pabst Blue

Ribbon locomotive motion sign
priced at \$425, the Blatz Beer
"Safe at Home" statue at,
\$495. 414-339-9504

My fine art pick at
Portobello Road
Antiques: this signed
Martini 1943 desert
landscape, 20" x 24" and
priced at, \$925. 414-630-5624



At T's Antiques,
this amazing Karr
nickel plate & enamel
salesman's sample
stove was priced at,
\$3,400. 563-343-5693

My decorated stoneware
pick at Beneath the Dust:
this six-gallon floral-themed
churn, asking price \$595.
920-229-8298



Antiques

Welcome Visitors!

Fox River Antique Mall

Where the Past.....Meets the Present

Large Selection of Antiques & Collectibles • Dolls • Furniture •
Glassware • Jewelry & More

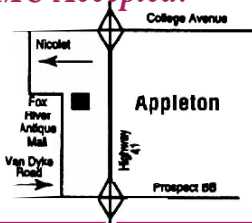
30 Day Layaway • Gift Certificates • Visa & MC Accepted!

Largest Antique Mall in Northeast WI

920-731-9699

1074 S. VanDyke Rd., Appleton, WI
(Between Prospect BB & College Ave.)

30,000 Sq. Ft. & Over 165 Dealers
Open 10 a.m. - 6 p.m. Daily



20th
Annual
Winter

INDIAN RELIC SHOW

Schwabenhof

N56 W14750 Silver Spring Drive
Menomonee Falls, WI

February 8th
8 am - 3 pm



Food available on site
No carry-ins allowed

EXPERTS

available to identify artifacts

AWARDS
for **BEST** artifacts

Admission \$2.00
Children under 12, FREE



Sponsored by the Badger State Archaeological Society
For more information contact: Bill W. 262-246-6147

Madison Stove Works

Antique Wood-Burning Stoves Sales & Restorations

We are a company that's been in the research
& restoration of antique wood burning stove
business since 1975 in the Madison/Dane County
area in the beautiful State of Wisconsin.

Our work is driven by our passion for
physically repairing & restoring non-fossil
fuel based heating technologies of the past for
present day usage, admiration & enjoyment
-this give us the greatest satisfaction in what we do.

6474 Lake Rd / Cty Rd CV, Windsor, WI
608-516-0890 or email: rickglloe@gmail.com

MadisonStoveWorks.com



Before



After

SHOP! COLLECT! DECORATE!

CEDAR RAPIDS ANTIQUE SHOW & SALE

HAWKEYE DOWNS FAIRGROUNDS
4400 6th St. SW • Cedar Rapids, Iowa
APRIL 24, 25 & 26, 2015

FRIDAY 10 am-6 pm • SATURDAY 10am-6pm
SUNDAY 11am - 4 pm

Paintings, Primitives, Bookends, Doorstops,
Coins, Autographs, Toys, Postcards, Jewelry,
Victorian, Pottery, Art Glass, Silver Matching,
Civil War, Historical, Advertising & More!

Admission \$6.00
Good All 3 Days

FREE PARKING

507-269-1473 or 641-832-2700
www.townsendshows.com

DEALER INQUIRES INVITED

\$1 Off Adm. with This Ad!



324 E. Walworth Ave. ~ Delavan, WI

150 Dealers

Open 6 days ~ Tuesday - Sat. 11 -6 and Sun. 12-5

262-740-1400

Historical Downtown Delavan Location Friendly &
Professional Staff ~ Reasonable Shipping Rates

Visit us on facebook: www.facebook.com/LaurensAntiquesArtCentre



Cherry chest, signed
"P. Woodward" Kilbourne
Gap, WI. Replaced back-
splash/knobs. C. 1840-50.
\$775. Dlr. PS

Oak Victor Victrola
table, model VV-XI.
Works! \$245
Dlr 827



Country
store fixture,
all original. C. 1870's.
\$295. Dlr. P



Imperial Germany (WWI & earlier) medals
& pins. \$40 each or whole lot \$450. Dlr. DLE

Limited Dealer Space Available ~ Call Today

Old Baker's
Cocoa
advertising
tray. \$150.
Dlr. JRD



SUNDAY MARKET ANTIQUES

BLOOMINGTON, ILLINOIS
FEBRUARY 22, 2015

100 QUALITY DEALERS

Americana • Furniture
Folk Art • Jewelry • Advertising
Textiles • Glassware

INTERSTATE CENTER

2301 W. Market Street

Exit 160 from I-55 & I-74 - Rt. 9 West

8 a.m. - 4 p.m.

Adm. \$6.00 (13 & under free)

NO PETS • RAIN OR SHINE • FREE PARKING

www.thirdsundaymarket.com

Contact: Mike & Emily Raycraft - (217) 202-2847

3rd Sunday Market

Box 396 Bloomington, IL

61702-0396

thirdsundaymkt@aol.com

follow us



ABRAMS Ironwood Antique Mall



2740 E. Frontage Road
Abrams, WI 54101
Hwy 41-141 to Exit 185
(Left at McDonald's)

 **1920-826-6226**
Open Daily
10 a.m. - 6 p.m.

Dealer Space Available

Water Street Vintage, LLC

207 W. North Water Street
New London, WI
920-982-9826

 **Mon.-Fri. 10-6**
Sat. 10-5 • Sun. 11-4

waterstreetvintage.com
facebook.com/waterstreetvintage

Three-Story
Antique Mall

Call it New Call it ANTIQUE

823 Main St.
Downtown Stevens Point, WI
715-544-6024

Hours:
M-F 10-6 pm
Sat. 10-5 pm
Sun. 11-4 pm

Easy Intake at our rear Clark & Water St. entrance

- Thousands of items uniquely displayed
- Courteous & helpful staff
- Consignment available
- Comfort while others shop
- Main anchor to the downtown square
- Shop & Browse this Unique Destination!

Antique Market I

11 North 3rd Street
St. Charles, Illinois 60174
630-377-1868

In Business Since 1982

 **Celebrating 33 Years**

Open 7 Days a week
10-5 pm

~ Mid Century Modern Furniture ~

Wrightstown Antique Gallery

Over 40 Years Experience

7142 Shanty Rd., Wrightstown WI
920-532-4308

STORE HOURS:
Wed-Thur-Fri 11am - 5pm
Saturday 11am-4pm Sunday by appointment or chance

EBERT'S ANTIQUES

 **Manitowoc, WI**
I-43 At Exit #152
920-682-0687

***** SALE! *****

100's of pieces of painted & stripped furniture

ebertsantiquesmanitowoc.com
Open 7 Days A Week!
Open All Year

MC - VISA - Discover Accepted!
A MILLION DOLLAR INVENTORY!

4 MALLS **VOLO** **300 DEALERS**

www.voloshopping.com

100,000 Sq.Ft. of Unique Shopping in One Location!

Open Every Day from 10am to 5pm

3 Large Connecting Antique Malls - 250 of the area's finest dealers displaying antiques and collectibles including 3 floors in our circa 1880's dairy barn! "An Antiquer's Heaven"

Mercantile Mall - 50 dealers displaying new items, antiques, gifts, Tiffany style lamps, classic video games, home décor, custom art framing, collectibles and lots more.

At the Famous Volo Auto Museum
Near Rts 12 & 120 in Historic VOLO, IL

www.VOLOSHOPPING.COM
Phone 815.344.6062
About 50 miles from Chicago, Milwaukee or Rockford

Rockford's high traffic mall

East State Antique Mall

5411 E. State St., Rockford, IL 61108
Hours: Open Daily 10:00am - 7:00pm

 **Stop by anytime to register to win a \$50 Gift Certificate.**
Winner will be drawn on Valentine's Day

Showcases & Booth Spaces Available
eaststateantiquemall@yahoo.com

815-229-4004

30th Annual WAUSAU ANTIQUE SHOW

 **FEB. 14-15**

Sat 9-5 • Sun 10-4
D.C. EVEREST HIGH SCHOOL
Greenheck Field House
2305 Jelinek Avenue, Weston, WI (4 miles S. of Wausau)
www.antiqueshowsinwis.com

50 SELECT DEALERS with Quality & Variety!
*Food Stand * Free Parking*
Win a \$50 Gift Certificate!



Do not miss the opportunity to Buy with Confidence from "Great" Dealers with items from 1870 to Mid-Century!

Primitives • oils • furniture • weathervanes • dolls jewelry • sports • toys • art glass • a booth of Rockers • American Indian • postcards • tools • garden • coins • Military • retro • lodge • Valentines & more!

Admission: \$4.50 • Under 16 Free
FROM THE NORTH-SOUTH-WEST: Hwy 39/51, Exit 185 Go N. to 5th light, turn E. (at Burger King) 1/2 mile on Jelinek.
FROM THE EAST: W. on hwy 29 to Exit 171 (Bus. 51); Go N 1/2 mi. to Burger King turn E. 1/2 mile on Jelinek

Info: 715-355-5144 AR Promotions



2015

15th Annual La Crosse Logan Band

ANTIQUUE SHOW

April 11 & 12, 2015

Saturday 9 am - 5 pm • Sunday 10 am - 3 pm
Admission \$4.⁰⁰ 12 and under FREE

Antiques and Collectibles too good to miss!

Furniture • Jewelry • Advertising Collectibles
Glassware & China • Silver • Lamps & Lighting
Sports Collectibles • Toys • Pottery

Logan High School Field House
1500 Ranger Dr. La Crosse, WI

www.loganantiqueshow.webs.com
Limited dealer space available.
Contact Mark Lakmann (608) 789-7700 x7728



Proceeds benefit Logan High School Band and Student Scholarships

Out & About

The snow accumulation seems to be kinder on us this year around here. Last year it was so cold, everything was freezing. I have yet to pass any snowmobilers on my way home. Usually, I always pass snowmobilers riding down the trails. I live by Lake Winnebago and we have had a couple of vehicles go through and recently had some fatalities. Please check with your local tackle shops before going out on the ice with your vehicles. I know, everyone has been doing this for years, and it won't happen to you, please be safe. With the changing weather temperatures, ice can get very unpredictable fast.



We would like to remind everyone that we have changed our deadline dates, they are now Mondays at noon. We know a lot of you received all of our reminders, and are excited about the change. We now mail the paper on Wednesday morning.

When Out and About this weekend, be sure to check out:

Top of the Class Antiques Show on Friday, January 30th, Saturday, January 31st & Sunday, February 1st. Located at Illinois State University in Normal, Illinois. See upcoming events for more information.

Mark your calendars for:

41st Winter Wisconsin Antiques Dealer Association Antiques Show & Sale on Friday, February 6th & Saturday, February 7th. Located at Waukesha County Expo Center in Waukesha, Wisconsin. See upcoming events for more information.

Antique Spectacular on Friday, February 6th, Saturday, February 7th & Sunday, February 8th. Located at Iowa State Fair Animal Learning Center in Des Moines, Iowa. See upcoming events for more information.

Indian Relic Show on Sunday, February 8th. Located at Schwabenhof in Menomonee Fall, Wisconsin. See upcoming events for more information.

43rd Annual Milwaukee Antique Bottle & Advertising Show on Sunday, February 8th. Located at Country Springs Hotel in Pewaukee, Wisconsin. See upcoming events for more information.

AR Promotions Wausau Antique Show & Sale on Saturday, February 14th & Sunday, February 15th. Located at DC Everest High School in Schofield, Wisconsin. See upcoming events for more information.

Townsend Promotions Mayo Civic Center Flea Market on Sunday, February 15th. Located at Mayo Civic Center in Rochester, Minnesota. See upcoming events for more information.



Mekenzy wants the option of playing college hockey. Her first college pick is Bemidji State University, then University of Wisconsin-Superior. She would like to be a gym teacher and work with children who have disabilities. So, she has limited colleges to choose from that offer her degree along with being able to play hockey. Her twin sister Tia will not be attending the same college as Mekenzy. She wants to attend Michigan University to be a Trauma surgeon. Her second field pick would be something in genetics.

AUCTION ACTION ANTIQUE NEWS

Your Midwest Connection
www.auctionactionnews.com



Your Weekly Auction & Antique Guide

Phone: 715-524-3076 Fax: 1-800-580-4568 (24 hours)

E-Mail: auction@auctionactionnews.com

Web Site: www.auctionactionnews.com

Auction Action Antique News

Published weekly

(except 3rd & 4th week in December)

Auction Action News Inc.

1404 E. Green Bay St.,

Shawano, WI 54166-2258

Fax toll-free: 1-800-580-4568 (please call first)

E-Mail: auction@auctionactionnews.com

Office Hours: 8-5 Mon-Wed

Office Hours: 9-3 Thurs-Fri

Periodicals Postage Paid

at Shawano, WI 54166.

USPS Publication #019-243

POSTMASTER: send address changes to

Auction Action Antique News

1404 E. Green Bay St.,

Shawano, WI 54166-2258

Display Advertising Rates

Size-----Rate

1/8 Page-----123.00

3/16 Page -----178.00

1/4 Page -----259.00

1/2 Page-----531.00

Full Page -----1,062.00

Center two pages-----2,124.00

Ad Set-up Fee -----30.00

(fee will be credited to your account when ad runs.)

No charge for Ad Estimates!

Call for rates on multiple insertion ads

Ad deadline
Mondays Noon

Subscription rate — \$35.00 per year (50 issues mailed). **First Class mailing is Available upon request at the rate of \$75 per year.** Digital Subscription plus mailed subscription \$55 or Digital Subscription only \$27.00 (fast internet connection & password needed for Digital edition).

Late ads — Late ads will be accepted if space and time permit. Ad deadlines may be adjusted due to holidays. Advance notice will be included in prior issues.

Telephone ads — Ad copy will not be accepted over the telephone. All ads must be typed and received by the copy deadline through either mail, express delivery or fax or E-mail.

Photo Requirements: Full color photos are available for any ad \$3 per Photo.

(limited pages available for full color) Please call to reserve color.

Please Call Before Sending Color PDF Files. All color PDF files must be in CMYK color.

Call for column sizes and other PDF requirements before sending.

Auction Action Antique News is a service to its advertisers and is not responsible for any auctions that are advertised. The publisher will not be responsible or liable for misprints, typographical errors or alleged misrepresentations in any ad. The publisher reserves the right to edit or refuse any advertising deemed unsuitable for the publication. The advertising appearing in Auction Action News including all photographs, is the property of Auction Action Antique News and any reassignment of said advertising cannot be reproduced without the expressed written consent of Auction Action News. Auction Action Antique News will not knowingly publish Commercial Web Sites. All Advertisers Individual Business Web Sites are encouraged and will be published in all ads. All material and photos submitted to Auction Action Antique News becomes the property of said publication and may be reprinted at our discretion.

Editors and Publishers: Bob & Jeni Olsze

Production & Graphic Design: Tom Hutchcraft & Renee Linke

Assistant Editors: Michelle Hoisington & Renee Linke • **Bookkeeper:** Michelle Hoisington

Web Design: Lynn K

Contributing Writers: Brian Maloney • Jack Kelly

DEADLINE DATES

NEXT WEEK'S DEADLINE - ISSUE #2028

Monday, February 2nd at 12 (noon) for paper mailed Wednesday, February 4th

Covering Events from February 10th on

FOLLOWING WEEK'S DEADLINE - ISSUE #2029

Monday, February 9th at 12 (noon) for paper mailed Wednesday, February 11th

Covering Events from February 17th on

Auction Action Antique News

Order The Type of Subscription
That Best Fits Your Needs
or
Submit a Classified ad

Don't miss this opportunity to receive a full year of Auction Action Antique News delivered right to your door. Auction Action Antique News brings you the latest Auction ads and articles, Also Antique Shops, Shows, New Mall & Shop Openings, with lots of photos & prices results every week!

Please print clearly and enclose **Payment**, & your Name, Address & Telephone number with ad.

Name _____ Tel. Number _____

Address _____

City _____ State _____ Zip _____

An Auction Action Antique News classified ad is only \$10.00 for the first 20 words and 25¢ for each additional word, Please include Name & Address or Telephone Number in ad. Discounts available for repeating ads. Make connections with collectors and dealers throughout the Midwest right here through AAN

Get Impact From Our Classified Ads!

No Auction Ads Will Be Placed In The Classified Section

If you are interested in the On-Line Edition of The Paper, Please Send Us Your Information by E-mail to: auction@auctionactionnews.com

Mailed Subscription for 1 Year (50 issues)

Online Subscription 1 Year (50 Issues)

Both Mailed and Online Edition for 1 Year (50 issues)

PLEASE PRINT

Name _____

Address _____

City _____ State _____ \$35.00 Mailed Edition ☐

Zip _____ \$27.00 Online Edition ☐

Telephone _____ \$55.00 Both Mailed & Online ☐

Email _____

Preferred Password (at least 7 characters) _____

Yes, I would like to receive one year of Auction Action Antique News
Pay by Check, Money Order, Visa and Mastercard Accepted

Type of Ad: Wanted _____ For Sale _____

Run for _____ Weeks

TEXT OF AD • Please be sure to include Address and/or Telephone Number

_____	_____	_____	_____	_____
_____	_____	_____	_____	_____
_____	_____	_____	_____	_____
_____	_____	_____	_____	\$10.00
_____	_____	_____	_____	\$11.25
_____	_____	_____	_____	\$12.50
_____	_____	_____	_____	\$13.75
_____	_____	_____	_____	\$15.00

Mail check or money order to: Auction Action Antique News, 1404 E Green Bay St. • Shawano, WI 54166 • 715-524-3076 or Fax: 1-800-580-4568

E-mail: auction@auctionactionnews.com

We Reserve The Right To Reject Any Ad

Auction Ads will not be accepted in the Classified Section

Your Next Issue of Auction Action Antique News is Just a Simple Click Away!
Our Digital Edition of the Paper can be Downloaded in Seconds at
www.auctionactionnews.com

Can't wait for your subscription to arrive by mail? Take advantage of our Online Subscription and Get your Copy in Just Seconds!
Download & read from almost any mobile device! iphone, ipad, ipod, Smart Phone, Tablet, PC or Mac!

CURRENT SUBSCRIPTION OPTIONS & PRICES:

Mailed Subscription: \$35.00 (50 Issues)

Online Subscription: \$27.00 (50 Issues)

Online and Mailed Copy \$55.00 (50 Issues)

BENEFITS OF THE DIGITAL EDITION: We Keep the Previous Month's Issues on Our Website for

You! Have access to the paper sooner than you can get it in the mail! The paper is downloadable & searchable by word and you can print it! To Search go to Edit - Find - Enter your word(s) and click Find!

To Sign up for the Digital Edition, just go to our website, click on Subscribe, pick which subscription type you would like, use your Email Address for your user name, enter a password, your contact information, click Submit & you are then able to access the current issue within 24 hours! The new Edition is available every Thursday.

NO OTHER TRADE PAPER OFFERS THIS UNIQUE SERVICE!

Give us a call, email us or visit our website to view a Sample Issue.

It is so fast and easy, you won't believe it! You can be reading your next issue in just seconds!

Auction Action Antique News, 1404 E. Green Bay St., Shawano, WI 54166

Office Phone: 715-524-3076 • Fax: 1-800-580-4568

Website: www.auctionactionnews.com • Email: auction@auctionactionnews.com

Auction Action Antique News - Online! Always On Time!



Washington County Fair Park Hosts N.L. Promotions West Bend Antiques Show

Article & photos by Brian Maloney

As I'd noted last week, it was very encouraging to see the large crowd at the January 10th & 11th Janesville Antiques Show. That trend continued at this West Bend Show, with more than two-hundred folks lined up bright & early for the show's opening. And the mild weather we've had for most of the winter made travel for us antiques enthusiasts a pleasant task.

The Pavilion Building at the Washington County Fair Park was host for the show, as it has been for the past several years. It's become a popular venue for events of all kinds in this part of the state, and it's not hard to see why. The state of the art facility, about thirty minutes north of Milwaukee, offers easy highway access and unlimited free parking. The soaring windows let the natural light flood in. It's a great place to spend the day on a Wisconsin winter weekend.

Advertising aficionados found much to like at the show. Pearmont Antiques was a good place to start looking, with period signs including several dairy farm examples. Rich Yahr came with the breweriana he's known for - and at both Chic Mantiques and Yesterday's Memories sat choice vintage advertising in every category.

There were several furniture dealers of note at the show too, including Second Chance Antiques and Ken's Family Antiques. Both brought large inventories of restored American furniture from the mid-1800s to the 1950s. And what about the

Arts & Crafts period? Portobello Road Antiques brought their usual great selection of the Arts & Crafts pieces they're known for - with exceptional American and English furniture and some nice European accessories in both Arts & Crafts and Art Nouveau styles.

Vintage toys more your thing? There were wonderful finds all over the Pavilion, from the classic Marx tin-litho wind-ups at Out on the Farm Antiques to an amazing blue enameled & nickel-plated Karr toy/salesman's sample stove at Iowa's T's Antiques.

As you probably know, N.L. Promotions are the folks who also run the massive Elkhorn Antique Flea Market. When they started the event back in 1982, a good show meant a few dozen dealers might show up. Fast forward three decades, and Elkhorn has grown into one of the biggest and best indoor-outdoor antiques markets in the Midwest - with 500, 600, or even 700-plus dealers at each of the four summer events.

This year's first Elkhorn Market will be here before you know it, on May 17th. Don't forget to mark your calendar with the rest of the 2015 Elkhorn dates too: June 28th, August 9th, and September 27th. N.L. Promotions can be reached at 414-525-0820. Be sure to take a look at their website www.nlpromotionsllc.com for more information about all of their events, and as always, keep an eye out for all of their upcoming show listings in the Auction Action Antique News!



Attend any N.L. Promotions antiques event, including this January West Bend Show, and you'll be sure to see the smiling faces of promoters Nona & Skip Knapp at the door. They've been running successful antiques shows, including the massive Elkhorn Antique Market, for three decades!



It was like a guy's night out at Chic Mantiques, with finds including this Jennings Sun Chief slot machine (\$2250) and vintage soft drink advertising thermometers starting at \$125. 414-339-9504



Early electric lighting from Laura's Collectibles: the Art Nouveau figural nude lamp priced at \$165, the three-bulb candelabra at \$65. 414-466-4000



Rich Yahr had four vintage working toy steam engines to choose from, with prices starting at \$80. 262-626-4369



Shoppers found some choice beer & soft drink advertising in Rich Yahr's display, plus petroliana like this full rack of vintage Standard Oil glass bottles - \$595. 262-626-4369



I found this stag-themed cold painted metal cigarette/match holder at No Egrets Antiques, price tag \$125. 414-916-7829



At Kens Family Antiques, this 48" round oak table with three leaves (\$895) was paired with six matching press-back oak chairs priced at \$695 for the set; the circa 1950s bamboo dinette set at \$295. 920-795-4373





Noted Wisconsin dealers Linda (left) and Laura Burger came with a vast inventory of fashion jewelry for every taste. 414-466-4000



Kens Family Antiques came with the restored period they're known for, from this beautiful burl-walnut tall cabinet (\$1,295) to a pegged-pine country cupboard priced at \$1,195. 920-795-4373



K-J Antiques came with a wide array of art glass, among the inventory this trio of Phoenix Glass Flying Geese panel vases – take your pick for \$375. 920-725-4879



Football
Anyone? Maybe not with this 48-pound concrete & iron windmill weight from T's Antiques, made by Baker Windmill in Evansville, Wisconsin and priced at \$695. 563-343-5693

Two rustic-framed western prints from Indian Creek Antiques: the Charles Russell "The Broken Rope" priced at \$145, the Frederick Remington "The Smoke Signal" at \$125. 262-363-7338



Shoppers found this colorful Just Born penny-candy display case at All American Sports, price tag \$315. 414-672-7777

Great look to this restored Wilson kitchen cabinet at Second Chance Antiques, price tag \$1,250. 920-849-9241



At Beneath the Dust, this pretty-nice Arts & Crafts corner cellaret was priced at \$495, the copper & slag glass table lamp atop it at \$375. 920-229-8298



A stack of country chests from Beneath the Dust: the 19th century decorated German immigrant's chest (bottom) priced at \$675, the dated-1872 trunk (center) at \$375 and the stenciled J. Cadman example at \$250. 920-229-8298



Milwaukee's All American Sports came with that and more, including this huge & complete Elgin National coffee mill with 28" wheels - \$2,450. 414-672-7777



A great mix of Arts & Crafts and Art Nouveau furniture and accessories awaited at Portobello Road Antiques with finds like this inlaid English washstand (\$750) and Württembergische Metallwarenfabrik copper & brass pitchers - \$335 and \$395. 414-630-5624



Two mint-in-box toys from Out on the Farm Antiques: the Wisconsin-made Tick Tock Sand Shovel priced at \$65, the Japanese "Itchy Dog" celluloid noddler at \$98. 920-294-3068

Choice litho-tin windups from Out on the Farm Antiques: the Unique Art G.I. Joe Jouncing Jeep priced at \$190, the Marx Milton Berle Car at \$180. 920-294-3068





You'd never guess at first glance, but this huge dollhouse (from Yesterday's Memories, \$3,800) is actually a pediatric dental cabinet, made in the 1930s and modeled after a home located in Two Rivers, Wisconsin! 262-352-2335



Auto buffs found some classic hood ornaments at Yesterday's Memories, including this 1927-1931 Lincoln greyhound (\$650) and 1931 Chrysler gazelle - \$600. 262-352-2335



Two toy car rarities from Yesterday's Memories: the Buffalo Commons Toy Company Turner Lincoln priced at \$2,800, the Cor-Cor sedan at \$1,895. 262-352-2335



My Agricultural advertising favorite at Pearmont Antiques: this hand-painted wooden dairy farm sign, asking price \$495. 920-210-4101



At Pearmont Antiques sat this Winchester Repeating Arms Co. 1898 signal cannon, price tag \$695. 920-210-4101



Jeff & Sue Jones Tagliapetra's display included two Badger Northland Equipment advertising examples, with the double-sided sign priced at \$325, the round thermometer at \$145. 608-347-9346



Two sporting collectibles from Lyn's Antiques: the mint-in-box Heddon Heritage bait-casting reel priced at \$145, the Case Kodiak knife & sheath at \$110. 920-246-0116

Home of the West Bend Antiques Show is the beautiful Washington County Fair Park Pavilion, located just off of Interstate Highway 45 about thirty minutes north of Milwaukee.



Anderson's Antiques was clock-central at West Bend, with choices like this Sessions calendar clock (\$340) and Waterbury German-style weight clock - \$400. 262-338-0665



The fine art find of the show just had to be this lovely Sarah Miriam Peale self-portrait (\$5,890) shown by Barbara Stoy Antiques. Peale, daughter of John Peale and a cousin of Rembrandt Peale, was among the first female artists in America to make a career from painting. 920-232-9667



**Are You Looking For The Perfect Gift for the
Antique & Collectible Lover In Your Life?**

A Gift Subscription To:

AUCTION ACTION ANTIQUE NEWS

Call Today: 715-524-3076

A Treasure Chest “A Trunk”

By *Shelby Weister*
“*Four Seasons Antique Mall*”

A trunk, according to Webster dictionary, is a chest for clothing. Trunks were used for storage, traveling and for concealing valuable belongings. Years ago, trunks were stored in wells attached with a rope, so thieves couldn’t steal silver and money, etc. These boxes of different shapes, covered with metal, cloth, leather or canvas, were used by travelers to carry clothing and personal items, like we use our modern luggage. All trunks had trays or bonnet boxes with covers for storage of ladies hats, parasols and gloves. A lot of trunks are missing trays, because they were lost or destroyed over the years.

In the fall of 1900, Sears Catalog displayed twenty-five trunks on two pages, ranging in price from \$1.75 to \$37.00. The ad read, “We sell trunks at all prices. We can suit you in style and quality. We want your order, because we can sell good trunks and bags cheapest. We recommend the medium and better grades; a dollar or two added to the price of a trunk may mean many years of additional usefulness. There is integrity in trunks, as in other merchandise. They should be made to stand the wear and tear, which they are sure to get from time to time. Our trunks and bags are made under careful supervision, every nail, rivet, clamp, hinge and lock is attached with exactness and skill of the thorough workmanship. This is why we warrant every trunk to be represented and the best of its kind at the lowest possible price.”

There were several trunk companies in Wisconsin, located in Milwaukee, Kenosha, Racine, Appleton, and Fond du Lac. Trunks were made from raw wood scraps of rough unplanned lumber, so companies were located near waterways and lumber mills. Pieces of tin or embossed tin covered the lumber, where seams joined together, a slat of wooden strip was attached with rivets, which is a nail with a head on both ends. Trunks were constructed of

many other materials, such as wicker, rattan, and leather. There are many shapes and sizes, flat, rounded, camel back, and rounded sides. If you have ever visited Staten Island Museum in NY, where the Statue of Liberty is located, they have a display of over one hundred different kinds trunks that immigrants used when they brought their possessions to America with them.

Children’s Trunks (smaller in size), doll trunks, salesman samples and unusual styles of trunks have greater demand and bring higher prices. Only the very elite could afford trunks for their children, most families shared one trunk. Theater trunks were very large and made of veneer covered with leather or black canvas. They stand on one end when you open them, and have drawers on one side and a place to hang costumes on the other. Traveling entertainers used them on trains. They were not made of wood, because they would have been too heavy to carry. Many old trunks were used to hold a young girls “Hope Chest” and carried a rich history from the old country. In Central Wisconsin, many trunks are from Germany, Poland, Czechoslovakia, and Norway.

Many people have at least one trunk in their possession. A trunk is one of the most basic and useful pieces of furniture there is. Trunks can be used as cocktail or lamp tables, storage units and benches. In the last twenty years, there has been a big resurgence in trunks, many people restore them to their original finish, or remove the tin to expose the beautiful patina wood finish. The inside of trunks and trunk trays can be restored using wallpaper, fabric, or cedar wood. Old trunks can be purchased at flea markets, rummage sales, or antique shops. The average price ranges from \$50 to \$200, depending on condition, style and rarity.

So Happy Trunking
Shelby Weister, owner of Four Seasons Antique Mall
in Marshfield, Wisconsin
715-389-1059 or 715-387-1054

YOUR SUBSCRIPTION RENEWAL DATE IS FAST APPROACHING

Dear Auction Action Antique News Subscriber,
Your subscription expiration date is printed on each week’s issue.
The date is shown on the first line of your mailing label at the top of the front page.

Our annual renewal rate is currently \$35.

For that investment you will receive a year Subscription of (50) issues to Auction Action Antique News. With informative articles in an easy to read format.

There are three easy ways to renew:

1. Telephone us to pay with a credit card.
2. Complete the form at the bottom of the letter and remit with check or credit card information.
3. Visit our website at auctionactionantiquenews.com and click on Subscribe Today and fill out the information needed.

EXPIRES DATE
YOUR NAME
YOUR ADDRESS
CITY, STATE, ZIP



☐ Yes, Please renew my subscription for one year!

\$35

☐ CHECK (# _____)

☐ VISA/MASTERCARD

Card No. _____

Exp. Date ____ / ____ CVV: ____

AUCTION ACTION ANTIQUE NEWS

1404 E Green Bay St., Shawano, WI 54166 • 715-524-3076 • auctionactionnews.com

Name: _____

Address: _____

City: _____ State: _____ Zip: _____

TRAIN AUCTION

Saturday, February 7, 2015 - 9:30 a.m.
Dorshorst Auction Building
 113 N. Main St. (Hwy. 73), Deerfield, WI (15 minutes from Madison, WI)
 See www.dorshorstauctions.com for photos.

500+ lots: Marx; S gauge American Flyer; G, HO, N & O scales; Lionel; accessories; track; buildings; much more! **Terms:** Cash or check w/positive picture ID. Everything settled for day of sale. 5.5% sales tax applies. No Buyer's Fee. Doors open 8:00 a.m.

Marv Dorshorst, Registered Wisconsin Auctioneer #344
 1078 Nesheim Road, Deerfield, WI 53531 - 608-764-8233 or 608-628-1631

ESTATE ANTIQUE AUCTION

KEWASKUM, WI

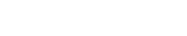
SUNDAY, FEBRUARY 8, 2015 - 9:00 A.M.
8:00 A.M. INSPECTION

LOCATION: Hwy. 45 or 28 to Kewaskum, East on Hwy. 28 to Hwy. "S", then north 1.5 miles hall.
AUCTIONEER'S NOTE: Virginia K. Townley Estate, Green Lake, with additions. An old line family with quality items throughout.

SPECIAL ITEM: Baldwin Artist Grand piano Model M1, 5' 2", ebony finish, like new, w/bench. **FURNITURE:** Nice 2 pc. cherry cupboard w/pie space; 2 pc.



pine dry sink w/cupboard top; 1800's cherry highboy; Possum belly baking cupboard; 3x5 scrub top tbl.; Vict. walnut desk; 1800's dbl. base drop leaf mahogany dining tbl. set; Cherry long drop tbl.; Cherry 1 drwr. work tbl.; Solid mahogany folding 2 shelf tbl. & nesting tbls.; Pair of Parquetry tilt top 1800's tbls.; Tiger maple & tilt top candle stands; Mahogany 1800's dresser; Col. Revival birds-eye chest; 5 rope beds & key; Vict. walnut heart medallion back sofa; Deacon's bench; Pair of arrow back chairs, old paint; Arrow back Boston rocker; Set/5 ribbon back chairs; Many early chairs, all types; Trunks; Tea cart; Glass top iron tbl.; Cheval mirror; 20's Empire mirror; Child's tbl. set; Etc. **GLASS/CHINA/STONEWARE:** Steuben platter; Tiffany paperweight; Royal Oak Rubina & Spanish lace cranberry shakers; Opal swirl cranberry lamps incl. finger; Other cranberry glass; Jadeite; Depression glass; C. Spode Raeburn cream soup plus china by V&B, Wedgwood, etc.; Franciscan Apple tumblers; Novelty china & McCoy planters; Red Wing 5 gl. toilet cleaner adv. jug w/wing; RW 4 gl. birch leaf beehive jug w/oval; RW advertising 2 gl. jug; Kapfer Zwischka adv. rolling pin; Radam's jug. **ART:** W. Churchill substantial bronze statue (ref. Hillsdale College) by Heather Trichtka; Eagle's head bronze sculpture by Sandy Scott; Margaret Jordan Patterson "Bleeding Hearts" original wood block color print; H. Girod de L'ain OOC "LeJardinage"; H. Lachnet OOC 2 girls/dog/fishing coastal scene; 2 large, old OOC include 32x60 Oriental river scene & 36x60 European river scene; 1800's birds-eye maple mirror frame w/OOC still life; Picasso Don Quixote print; Super pair of 1900's game prints; DuPont game print; Gromme prints; C&I prints; Tramp art frame; Nice Eastlake iron picture frame; Etc. **THE REST:** Pairpoint D3067 tbl. lamp w/17" RPOG signed scenic & windmill shade; Moe Bridges lamp base; Vict. hanging lamp; Clipper tole oil sconce; Oil lamps; Magnifying floor lamp; 1800's English tall case clock & another; ST OG & another; 1896 WI RR map; Indian Motorcycle matchbook cover; Barton cigar box; Coke cardboard case; IH Scout & other adv. thermometers; Maytag oil can; 2 Grace Putnam Bye-Lo dolls; K & R, S & H 117N doll; Stick leg mache candy rabbit; Williams horse still bank on tub; Arcade transitional tractor; 1964 Tonka Army dozer & grader; Hubley transport semi; Bridgeport BSA hatchet; Good 40's-50's Xmas items include Rosen (Rosbro) Santa's Candy Express sleigh in box, Shiny Bright orns., Noma lighted cross, etc.; Singer featherweight; Samplers; Quilts; 1800's K.T. Society hat, glove, sash; Many good linens & buttons; Rosewood abacus; Fountain pens; Eisenberg ice & other costume jewelry; Vict. sterling brooch; Sterling lighters, lipstick cases & jewelry; Tiffany sterling porringer; Over 50 pcs. sterling serving ware incl. unusual forms; Sterling brush & dresser sets; English S/P tea set; Cheltenham S/P candleabra; S/P candlesticks; Other S/P; German pipes; Horse weathervane; 2 produce scales; Old pewter; Tin lunch pails; Flue covers; Wool basket; Brass iron; Dovetailed copper kettles & more; LeCreuset & other iron cookware; Florence Machine Co. waffle iron; Quality cookware; Copper boiler; Enamelware; Case XX steel; Sleigh bells; Duck decoys; 5 Washington Cty. celts plus points; Baskets incl. Winnebago; Birch bark snuff box; Apt. frig.; Garden statuary; Schwinn 201 exercycle; Etc.



CHARBROILED BRATS, HAMBURGERS & REFRESHMENTS

TERMS: Cash or good checks. Out of state, two forms of picture ID required. Current D/L required for bid number. No buyer's fee. Absentee bids accepted via email only. mike@paulauction.com. No phone or online bidding. 5.5% WI sales tax applies.

Registered Wisconsin Auctioneer: Mike Paul #28.
 Appraisals ~ Real Estate ~ On Site or Indoor Sales
Paul Auction Company, Inc.
 P.O. Box 457, Kewaskum, WI 53040
 262-338-3030
mike@paulauction.com www.paulauction.com

PAUL
AUCTION CO. INC.
 established 1969



LIEBE AUCTION SERVICE

105 South Pine Street, Weyauwega, WI 54983
WEDNESDAYS - FEBRUARY 4, 11, 18, 25 - 2015

4:00 P.M. Inspection - 5:00 P.M. Auction
 We will be selling Smaller Area Estates.

SUNDAY - FEBRUARY 22 - 2015

9:00 A.M. Inspection - 10:00 A.M. Coins only

Approx. 11:00 A.M.- We will sell Antiques, Collectible & Household items.

www.liebeauctionservice.com

Terms: Cash or check with I.D.

Any information given the day of sale takes precedence over this information.
 All Sales final with no warranties or guarantees.



REGISTERED WISCONSIN AUCTIONEER: STEVE LIEBE #871
 Phone 920-867-3352 Email: liebeauctions@centurylink.net

CHECK WEBSITE NOW FOR MORE DETAILS ON THESE AND OTHER CURRENT ITEMS! NEW ITEMS DAILY!

BID, BUY & SELL AT

www.WisconsinSurplus.com

Sells at online auction to the highest bidder - Bid online now!!

 CLARK FORKLIFT Stk. #36541 Location: Wisconsin Rapids, WI #E-14-02259	 1993 FORD F350 XL Dually, baby dump w/9' plow, spreader and chipper box. Stk. #36537 Location: Clinton, WI #B-0-452259	 2009 FORD CROWN VICTORIA 4 dr. sedan, police. Stk. #36538 Location: Clinton, WI #A-3-452259	 CASE VIBROMAX STW16 STATIC ROLLER Stk. #36539 Location: Clinton, WI #E-4-452259
 2000 DODGE RAM 2500 CARGO Stk. #6181 Location: Mount Horeb, WI #T-5-452259	 1998 FORD EXPEDITION XLT 4 dr., 4WD. Stk. #6188 Location: Mount Horeb, WI #SUV-14-452259	 1999 FORD F250 XLT 4WD. Stk. #6251 Location: Mount Horeb, WI #T-7-452259	 1995 CHEVY SUBURBAN 2500 4 dr., 4WD. Stk. #6253 Location: Mount Horeb, WI #SUV-8-452259
 2001 CHEVY CAVALIER 4 dr. Stk. #6254 Location: Mount Horeb, WI #A-8-452259	 2005 CHEVY IMPALA 4 dr., police. Stk. #6255 Location: Mount Horeb, WI #A-10-452259	 2006 GEHL 6640E SKIDSTEER LOADER Stk. #36531 Location: Fond Du Lac, WI #E-11-452259	 1999 INT'L SF2674 TRI-AXLE PATROL/DUMP TRUCK W/wing and spreader. Stk. #36532 Location: Fond Du Lac, WI #B-12-452259
 2006 CONEQTEC AP600 III 24" COLD PLANNER ATTACHMENT Stk. #36534 Location: Fond Du Lac, WI #E-13-452259	 2012 CHEVY TAHOE LS 4 dr., police. Stk. #36426 Location: Marshfield, WI #SUV-14-452259	 2004 FORD F250 XL 4WD, w/Boss poly V-plow. Stk. #36422 Location: Grafton, WI #T-15-452259	 1992 GMC SIERRA 2500 8' Western plow. Stk. #36570 Location: Glendale, WI #T-16-452259
 1992 DODGE RAM 150 LE 2WD. Stk. #36571 Location: Glendale, WI #T-17-452259	 2012 CHEVY TAHOE LS 4 dr., police. Stk. #36557 Location: Waukesha, WI #SUV-18-452259	 2012 CHEVY G3500 EXPRESS EXT. 15 pass. Stk. #36558 Location: Waukesha, WI #T-19-452259	 1998 MOHAWK TR-25A FOUR POST LIFT Stk. #36559 Location: Waukesha, WI #A-20-452259
 2003 FORD CROWN VICTORIA 4 dr., police. Stk. #36565 Location: Omro, WI #A-21-452259	 BAYFIELD COUNTY GARAGE BUILDING Stk. #60333 Location: Grand View, WI #A-22-452259	 2003 JOHN DEERE 525 38" front deck. Stk. #36567 Location: Omro, WI #T-22-452259	 1998 WEATHERHEAD T400 HOSE CRIMPER Stk. #36560 Location: Waukesha, WI #E-23-452259

www.WisconsinSurplus.com

VISIT WEBSITE FOR DETAILS

WISCONSIN
SURPLUS
ONLINE AUCTION

Registered Wisconsin Auction Company, License #01
 Wisconsin Surplus On Line Auction - Used Car Dealer #3887
 202 W. Front St. - Mount Horeb, WI 53572-0113
 (608) 437-2001 - bid@WisconsinSurplus.com
ACT NOW ... AUCTIONS ENDING DAILY!

*VEHICLES & ITEMS ARE SUBJECT TO AUCTION CLOSING DATES.



Large One Owner Ac

Location: 1625 Butts Ave

Inside Heated Building at Mon

SATURDAY, FEBRUARY 1

NO BUYERS PREMIUM! Call 1-800-451-7243

For Photos & Link to Internet Bidding- WV

Email- wisconsinjunk@yahoo.com

This auction will have 470 lots of Original Advertising Signs, Oil, Tires, Batteries, Steamship, Road, Soda, Farm, Fe Equipment, etc. Other Items, Oil Can Racks, Curb Signs, A Ride On Truck, Door Pushes, License Plate Toppers, Gas P

Auction Conducted & Clerked by: **MILLERS**

N8779 Hwy. 95, Hixton

Registered Wisconsin Auctioneer

PH: Cell 715-299-2543 Glenn Miller Jr.





W. YODER AUCTION.COM

***WANTED* WANTED* YOUR SIGNS AND ADVERTISING MEMORABILIA FOR OUR ANNUAL SPRING AUCTION**

MARCH 20TH AND 21ST, 2015

March 20th, 2015: Annual spring sign & advertising memorabilia auction
YODER AUCTION CENTER N2475 13th Gateway, Wautoma, WI @ 9:00AM.
NO BUYER'S PREMIUM IN HOUSE

March 21st, 2015: 400+ Toys- YODER AUCTION CENTER, N2475 13th Gateway, Wautoma, WI @ 9:00AM Featuring, "The Ed Buscko collection". NO BUYER'S PREMIUM IN HOUSE.

This action packed weekend has ONLINE CATALOGS AND ONLINE BIDDING!!
DON'T FORGET: WE ARE AT ALL TIMES EXCEPTING CONSIGNMENTS OF INDIVIDUAL ITEMS OR COLLECTIONS AND MAY PURCHASE YOUR COLLECTION—CONTACT US WITH WHAT YOU HAVE AT 920-787-5549/WAYNE 920-295-2644 or wyoderauction.com remember "The early bird gets the best exposure for the highest price".

Terms: Cash, Checks, Visa, MasterCard. I.D. required to register, 4% convenience for credit card. All sales final with no warranties. Announcements sale day supersede this and printed material. Not responsible for accidents. See our website for in-house and online terms for each auction.



W. YODER AUCTION SERVICE

N2475 13th Gateway, Wautoma, WI 54982 • 920-787-5549; Cell 920-295-2644

Registered Wisconsin Auctioneer: Wayne Yoder #1977

For More Info. and Updates, Visit: www.wyoderauction.com



Fantastic February Auction!

Auction held at: **GARNAVILLO AUCTION COMPANY**
105 SOUTH MAIN, GARNAVILLO, IA

SATURDAY, FEBRUARY 7th, 2015

With cataloged items beginning at 9:30 A.M. (Back room begins at 8:30 A.M.)

The best selection of antiques we have had in a long time! Check our website for pictures and descriptions at garnavilloauction.com and at auctionzip.com. Antique Furniture to include a Fabulous 60 inch raised panel oak roll top desk with full interior ~ 3 piece oak bed set ~ 2 oak hall seats ~ L & JG Stickley rocker ~ carved pub chair ~ Danner 3 stack & 2 stack sliding door bookcases ~ Mission oak 2 door china cabinet ~ large oak revolving bookcase ~ 2 corner cupboards ~ spool cabinets ~ bronze marked Remington ~ Danner drop front desk with leaded glass doors ~ early 2 piece chest on chest with dovetailed case ~ early barrel roll desk ~ Victorian tables ~ marble top tables ~ oak Macey file cabinet ~ set of pressed back chairs ~ wicker & oak tables ~ fancy pedestals ~ medallion back sofa ~ oak secretary ~ fancy Singer sewing machine & several other great pieces of furniture! Also lots of great stoneware ~ pottery ~ Hull ~ Roseville ~ North Dakota School of Mines ~ Van Briggie ~ Niloak ~ nice cast iron urn ~ coffee grinders ~ Adv. Signs ~ dolls ~ Parrish prints ~ quilts ~ coverlets ~ old games ~ great dress form on iron stand ~ leaded windows ~ hobby horse ~ cut glass ~ lamps ~ clocks & lots more!

Remember we do take absentee bids and you can bid live on auctionzip. Call with any questions at 563-964-9200. Like always we will have plenty of seating in our climate controlled building and terrific lunch stand! We hope to see you Saturday, February 7th!

GARNAVILLO AUCTION COMPANY, LLC

105 South Main Street, Garnavillo, IA 52049

563-964-9200 • www.garnavilloauction.com



ROBBIE'S "LIVE" AUCTION

Location: **ROBBIE'S AUCTION HOUSE**

705 KELLER AVE. SOUTH (HWY. 46) AMERY, WI 54001

Directions: On the south end of Amery on Hwy. 46. Watch for the billboard sign.

SATURDAY, FEB. 7, 2015 - 10:00 A.M.

Inspection: Saturday, February 7, 8:30 A.M. - 10:00 A.M.

Restrooms & Lunch On Site.

Visit RobbieSoldit.com for complete listing & photos.

ABSOLUTE AUCTION-NO MINIMUMS!

STONEWARE: Red Wing 4 gal. Elephant Ear Beehive Jug, R/W 20 Gal. Elephant Ear "Transitional" Crock, North Star Preserve Jar & Jug, Whites Utica, NY 4 gal. S/G Jug w/Lg. Cobalt Bird on Branch & NY 2 gal. S/G Beehive Jug w/Cobalt Flower, Hamilton S/G, R/W 20 & 2 gal. crock Lids, Norton Salt Glaze 1 Gal. Jug w/Cobalt Tree, Red Wing adv. beater jars, bean pot & mug, R/W 11" spongeware bowl, R/W 1/2 gal. Beehive Jug, R/W 1/2 gal. jug, Rochester mini jug, R/W 1/2 gal. squat jug, R/W 3 gal. Butter Churn w/lid, R/W 3 gal. Birch leaf & Wing Cocks, R/W 10 gal. crock, 12 gal. S/G Crock, R/W 10 lb Adv., "Martin Mohr Beaver Dam, WI", crock & More Cocks, Jugs, Adv. Many are bottom marked. S/G = salt glazed.

POTTERY/GLASS: NUDE Maiden Lamps, Fenton Silvercrest, Burmese Blue Satin, Cranberry Asst. Baskets; Vases, Van Briggie, Weller, R/W, McCoy, Niloak, Belleek, Watt adv., Globe Fruit Jars, 100+ Pcs. of Depression & Carnival Glass, Bavaria, Lefton, R/W Tulip Pitcher, Goebel, Bossons heads, R. Doulton, Royal Albert & Occupied Japan China, Irish Dresden Figurine & fish plate set, Daum France Vases & Paperweights, Signed Art Glass, S&P's, & Much More. **ANTIQUES/COLLECTIBLES:** Permex National 37 Railroad Signal Lamp Stand (RARE), 1856 Emerson/Telcott & Co. 2 Row Hand Planter, Railroad items incl. lanterns, cans, Caboose Commode, Shovel & Smalls, Cast iron Lollipop "Police" Sign Base, Cast Iron Whippet Dog Door Stop, Carved wood Santa, Postcards, Griswold, Wagner, Rabbit Mold, Lg. Cast Eagle, Meerscham Pipes, Lighters, Lg. Negro Watchman, 1864 Nicholson File set (IOB), Sargent 1080 Combo Plane w/cutters (IOB), Bailey No. 4 & 5 Planes, Bedrock #607 Plane, Sterling silver, full Jewelry Boxes, organ Stool, 1915 Dunn Cty. Atlas, V-Early Boy/Lone Scouts Mem., Pinback buttons, WWII Tank Helmet, 2 USMC Ike Jacket (s), WWII Globe War Atlas, WWII Jungle Air Force 13 (RARE), WWII 4th Infantry Division, "Lone Ranger Atomic Bomb Ring", license plate toppers, trench art, Vtge. Sears Silvertone 1457 Guitar w/1451 "Amp In Case" Dan Electro 11090 2 Pickup, Rare Redburst Version W/ All Org. Access. w/Orig. Case, Vintage Framus Mdl. 72605511 Guitar w/case, Vintage Airline Lap Steel Guitar, Supro/Valco mdl. #G11223 Dlx. W/All Orig. Access. (Mint in Orig. Case) 4 Stevens Tonebar Slides, Tuner, Dunlop & Nat. Picks. 2 vtge. Decca Guitars, 2 Coronets, Olds Trombone, Vintage Operadio Amplifier Mdl. R.S. #56265, Vtg. Working "Ultrix" R55 Rcvr., Yamaha CA 810 Amp., "Onkyo" CP 1010A Turn Table & Pr. of Criterion 4000 Spkrs., Records incl. Beatles, Elvis & more, vtge. 7-Up pop machine/cooler, old books & more. **TOYS:** Marx, Steiff Penguin & Panda bear, Peppy Puppy, Jolly Chimp, Monkey & Jolly Jack w/u, tin toys, windups, musical toys, sewing machine toys, Dolls, Negro Golliwog Dolls, Character Dolls & Access., WWII Toys, racing set, model kits, Tonka Snorkel Firetruck, Hartland Lone Ranger, Tonto, Sgt. Preston, Cheyenne Warrior & Horses, large asst. of vtge. train cars, engines, controllers, people, track & more. **FISHING/SPORTING:** Ray Nitchke's Pro Reports (40), Peter Mook Fisherman Statue, WI Fishing Regs., 2 wicker creels, Bamboo Fly Rods & Fly-reels, Old Reels/Rods, Some (IOB), Tackle Boxes Full of Old Fishing Equip. & Wooden Baits Consisting of Pfluger, Heddon, Creek Chub, Shakespere, Paw Paw & Others Some (IOB). Bear Recurve Bow & Fish Reel, arrows & More.

Terms: Cash, good check, Visa, M/C, or Discover. Buyer's premium of 10% applies to all purchases. WI state sales tax applies (5.5%). Proper id & bidding number required to buy. Auction conducted by:

ROBBIE'S AUCTION SERVICE, 2144 100th Street Somerset, WI 54025

Robbie Kobs, Registered Wisconsin Auctioneer #2334-052, MN Registered Auctioneer #6200019.

Phone: 715-338-7848 (Cell) www.RobbieSoldit.com

FIREARMS, DECOYS, INDIAN ARTIFACTS AND SPORTING COLLECTIBLE AUCTION

Auction to be held at the:

TUMBLESON AUCTION CENTER - 1635 N. MAIN ST., PRINCETON, IL

Located 100 miles West of Chicago, IL just off Int. 80, Exit 56, South on Rt. 26 in Princeton, IL (Behind the Sherwood Antique Mall) on:

SATURDAY, FEBRUARY 7, 2015

TIME: 10:00 A.M. (Preview: 8:00 A.M.)

****EARLY PREVIEW: FRIDAY, FEBRUARY 6, 2015 • TIME: 4:00-6:00 P.M.****

See Website for Full Description & Photos: www.tumblesonauction.com

FEATURING THE COLLECTION OF GARY HULIN, WYOMING, IL and Others.

Collection of OVER 150 Duck Decoys: Including Many Carved & Painted by Gary Hulin, Perdew, Elliston, Barto, Lane, Walker, Valley, Fox & Others; Haddon Perdew Crows; Various Duck & Crow Calls.

Collection of Arrowheads, Axes & Celts AND Book- Paths in the Prairie Grass by Gary Hulin.

Collection of Approx. 65 Long Guns: Including Winchester, Savage, Remington, Mossberg, Henry Golden Boy, Rare 1800's Punt Gun, Mauser, Browning, Marlin, M1 Grand, Several DU Guns, Stevens Crack Shot. **Collection of Approx. 50 Hand Guns Including:** Colt, S&W, Engraved



Colt Walker Percussion, Colt Comm. Set in Box, Beretta, Colt Police Positive, Walther PPK, Taurus, Glock, Hopkins & Allen, Derringers, Llama, Intratec, Hi-Point & Many Others. **RELATED ITEMS:** Group of Ammo; Holsters, Clips, Gun Cases, Scopes, Gun Cleaning Kits, Binoculars, Empty Gun Boxes, Gun Grips; Hunting & Gun Books, Western & Military DVD's; Military Clothing; Framed Gun & Ammo Ads; Old Infantry Booklet; Boots & Saddle Book by Elizabeth Custer.

KNIVES, FISHING, COINS: Many Hand

Carved & Painted Walking Sticks; Indian Drum; Moccassins & Beaded Necklaces; Western Spurs; Western Hats; Hunting & Many Pocket Knives; Lg. Knives; Knife Sets & Filet Knives; Fishing Tackle Boxes w/Lures; WWII Book Volume Set; Belt Buckles; One Dollar Silver Certificates; Paper Money; Confederate Currency; Silver & Ike Dollars; Wheat & Indian Head Pennies; Various Coin Sets; Foreign Paper Money & Coins; Nazi Coins, Stamps, Medal & Nazi Banner; First Day Issue Stamp Set.

Instruments, Cap Guns & Toys: Guitar, Electric Guitars, Violin & Trumpet; Miniature Toy Guns; Several BB Guns & Pistol; Many Cap Guns & Holsters; John Deere, Case & IH Farm Machinery Toys-Some NIB; Hot Wheels Including Red Line; Match Box Cars; Baseball Cards.

PLEASE NOTE: There is NO BUYER PREMIUM FOR ONSITE BIDDING, JUST A \$25 Gun Transfer Fee per Firearm. Proxibid and Absentee Bidding Available!

TT TUMBLESON AUCTION COMPANY

Princeton, IL • 815-872-1852 Email: ttauction@yahoo.com

Auctioneers: Tom & Mary Tumbleson Lic. #040000396-397 & Tiffany Foes #441.001601

Terms: Cash or Check. Credit Card Accepted w/5% Fee.



Increase Your Sales
Call 715-524-3076

AUCTION

Held at Rib River Ballroom, 3227 Hwy. 29, Marathon, WI

Another sale for Gerald Berna & others

SATURDAY, FEB. 7th, 2015 - 9:30 A.M.

Old Recurve & Compound Bows; Wooden Hunting Arrows & Blanks; Old Motorcycle Manuals (Indian, Matchless); Fishing Rods; Muskie Lures; Traps; Beer Signs; Christmas Village House; Antique Dining Room Table & Buffet; Ant. pump Organ; New 4x8' Trailer; Furniture; Collectibles; Winchester Rifles; Rossi 12 Gauge Stage Coach Shotgun; Many more Unusual items. Look at Website: 1-bid-2.com for larger bill & pictures. **Terms:** Cash or good check

Auction By: **RON WILICHOWSKI AUCTION & REALTY**

Registered Wisconsin Auctioneer: Ron Wilichowski #146. 715-443-3171 or 715 281-3171

Advertisers

Please Remember Our

Deadline is Every

Monday at 12 Noon



ATTENTION AUCTIONEERS!

Are The Crowds Dwindling At Your Auctions?

We Can Help Get You Back On The Right Track!

Call Us Today 715-524-3076

**AUCTION ACTION
ANTIQUE NEWS!**



www.WisAuction.com

NO RESERVE PUBLIC AUCTION

Jefferson County Fair Park

503 N. Jackson Ave., Jefferson, WI

This is an Auction you don't want to miss!

TUESDAY, FEBRUARY 3rd, 2015 ~ 9:00 A.M.

We start at 9:00 am with a collection of over 150 pieces of Red Wing Stoneware, and once sold we move on to a private Estate of almost exclusively Antiques.

Over 150 pieces of Nice oak, pine & walnut Furniture "most refinished" plus; Stain glass & other Lamps, duck decoys, Fishing tackle, china, quilts, prints, graniteware & other kitchen collectibles, Fire-King, cast iron including Boston terrier door stops, Postcards, Deer mounts, several primitives, Advertising signs, Penny scales, Clocks, Wood shop of tools, 2 Refrigerators, Stihl chainsaw, large Simplicity snow blower, Wheelbarrow, aluminum rowboat & much more! **VEHICLES SELL AT NOON;** 2004 Haulmark 10' cargo trailer, Toyota 1991 Previa Mini Van, Toyota 2003 Prius 4 door, almost new Husqvarna 24HP lawn tractor with 48 inch mower deck.

IMPORTANT: Trailer, Car & Van require cash, credit card, or certified check before the title is transferred. **ABSENTEE BIDS WELCOME.** See our website for photos & listing. Gregory Klug Sr. Wisconsin Registered Auctioneer #584. PO Box 617 Cambridge, WI 920-723-4309 **Terms:** State ID required for bid number. Cash, Good WI check, Visa, MC, ATM on site, 10% buyer fee, 2% fee for CC.

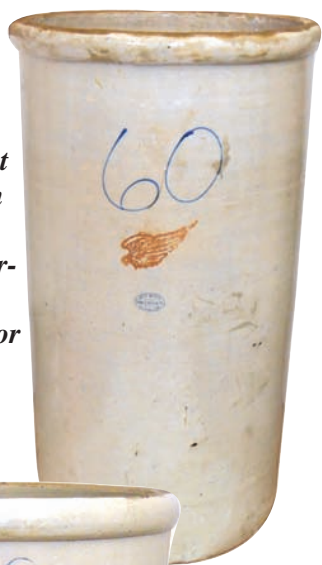


We Benefit our Advertisers!!

- Color photos are only \$3 each! We only charge \$25 extra for Color PDF's!
- We mail to every State except Alaska & Hawaii!
- Run your ads at least 2 Weeks ahead! This will give your buyers more time to plan to attend your auction & you will automatically be added to our Auction Reminder Calendar!
- Use photos in your ads! Photos attract Buyers!!
- Select ads with photos are featured on the Homepage of our website!
- The ENTIRE Paper is on our website! Buyers from Around the World will see your ad!

Rich Penn Auctions: The Mark Wilson Collection

Stoneware water cooler, Red Wing 60 gal w/Wing, 2 factory holes at bottom & 1 on side, VG/Exc cond w/old hair-line crack, 43.5"H. Sold for \$3,300.



Stoneware Ice Water Cooler, Red Wing 50 gal Birchleaf w/Red Wing ski oval & spigot hole, short hair-lines at bottom, o/wise Exc cond, 33.5"H. Sold for \$1,700.



Child's Patrol Wagon, wood w/red & green paint & gold lettering & stars, c.1890, a great wagon in VG/Exc cond w/some worn paint-

mostly on one side, 39"H x 49"L x 22.5"W. Sold for \$1,800.



Bank, mechanical, Eagle & Eaglets, cast iron w/orig paint, mfgd by J. & E. Stevens & Co., designed by Charles Henn-Chicago, patd 1883, Exc working cond w/great paint, 6"H x 8.5"L. Sold for \$2,000.

Article & photos by Rich Penn Auctions

One of the biggest attractions...partly because of its size, was a rarely seen 60 gallon, with Wing, water cooler. This mega cooler had bidders considering how to put competing bidders out of commission inside the huge 44" tall cooler during the first couple of hours of the 3-day auction. The water cooler sold for \$3,300 to an excited young buyer. Another stoneware 50 gallon Birchleaf ice water cooler with Red Wing ski oval brought \$1,700.

In addition to stoneware, the Friday session featured hundreds of toys and a variety of furniture. The full house of bidders and nearly 2,000 online bidders from over 40 countries, along with phone and absentee bidders kept the pace of the auction moving swiftly. Toys seemed to be the lots that drew the bidders from across the globe. For the very young law enforcement enthusiast, an early c.1890's sound and sturdy child's Police Patrol Wagon, in original condition, stopped bidding traffic at \$2,000. It was tailgated by another smaller child's Patrol Wagon in a different color scheme. That c.1890 wagon sounded the "Sold" siren at \$1,800. An Eagle & Eaglet cast iron mechanical bank manufactured by J. & E. Stevens & Co. flew away at \$2,000. There were a number of Popeye toys including a Popeye Puncher and Popeye on Skates. They brought \$600 and \$675. (283 & 286)

On Saturday, November 1, bidders returned for Country Store and Soda Fountain items. A bidder with a sweet tooth dished up a winning \$4,000 bid for a rare John Manos heart-shaped Ice Cream Scoop. A Near-Mint Fowler's Cherry Smash syrup dispenser complete with Cherry Smash pump reached a high bid of \$3,700, while an oak roll-top Columbia umbrella or cane case hammered down at \$3,000. Most Rich Penn Auction Events feature great Coca-Cola memorabilia, and a red button-top metal sign, "Take Home a Carton of Quality Refreshment" brought \$2,750. A die cut Reddi Kilowatt 3-color neon advertising sign, for Mazda Lamps, lit up the room to reach a hammer price of \$2,500. Among great furniture pieces sold on Saturday, a tiger oak corner china cabinet w/fancy stick & ball gallery, applied carvings and reverse curved door brought very competitive bidding across all bidding platforms. A telephone bidder finally closed the door on the cabinet at \$3,100.

With an extra hour of sleep due to the change back to Central Standard Time, bidders came back in Sunday hoping to drive away in a 1957 automobile or to carry away at least one piece of Native Americana or Petroliana. The 1957 Chrysler Saratoga 2-door hardtop in excellent condition drove away for \$8,000. A Native American flintlock rifle, Board of Ordnance "Medallion Chief Guns" sold with a bang at \$4,000. A one-of-a-kind Pontiac Chief dealer sign made of six deeply etched & painted panels in Excellent condition wowed the audience before being sold to a telephone bidder for \$4,750. A porcelain John Deere Quality Farm Equipment dealer sign by Burdick Enamel Sign Co. harvested a winning \$3,200 bid. One of the quality salesman's samples in the auction, a working derrick & life boat floated away at \$2,500. A Winchester Tools 5-panel window litho on cardboard display with great graphics sold for \$2,700 and a Sunoco gasoline pump with old glass globe rang up at \$3,250.

All three days the crowd was kept on their toes by the fast pace of the auction. A lot was selling every 50 seconds. Penn gave his team credit for that, "I have no doubt, they are the best auction crew in the country." Many in attendance shared those same comments.

Penn's also announced, they will be working with Ron Hoyt to conduct the Auction at the Iowa Gas Show & Swap Meet on August 7. Penn has five major auctions scheduled for 2015. The first is on May 1-3 in Des Moines, IA. That Petroliana auction features the massive Earl Cheese collection along with the collection of the late Jim Gerchow. For more information go to www.RichPennAuctions.com or call 319-291-6688.

Petroliana, Pontiac Chief dealer sign, (6) 1/4" plate glass deeply etched & painted panels, each is 24" Sq, currently unassembled so panels can be framed individually or together, a Very Rare sign that could be one-of-a-kind, all panels in Exc cond. Sold for \$4,750.

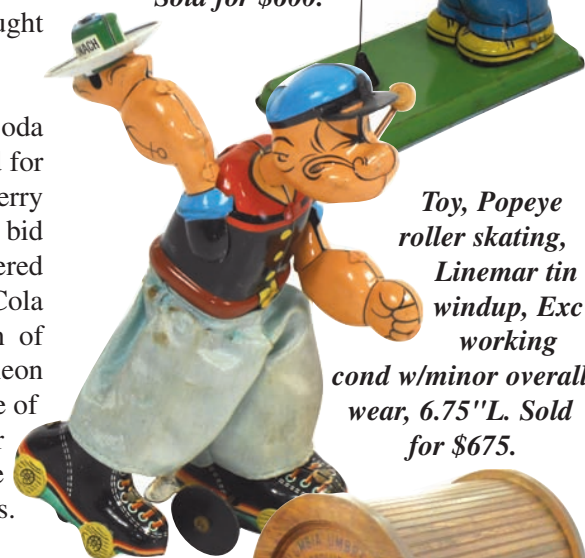


Child's wagon, Police Patrol, all wood w/weathered blue & gold paint, "Police Patrol" on both sides, driver & one side seat for passengers, passenger step on back, a sound & sturdy wagon in VG cond w/a great look, 31"H x 28"W x 55"L (excluding tongue.) Sold for \$2,000.

Toy, Popeye Barrel Walker, J. Chein tin windup, c.1932, Exc working cond, 7"H. Sold for \$600.



Toy, Popeye roller skating, Linemar tin windup, Exc working cond w/minor overall wear, 6.75"L. Sold for \$675.



Country store Columbia umbrella or cane case, mfgd by Wm. A. Drown & Co.-Frankford, Phila, oak roll top w/inlaid oak & walnut marquetry on sides & front, stenciled adv on both sides, openings for 70 of your favorite umbrellas or canes, Exc cond, 48"H x 22"W x 21"D. Sold for \$3,000.





Coca-Cola sign, red button & carton graphic, "Take Home a Carton of Quality Refreshment", enamel on metal, c.1950's, Exc+ cond w/minor paint loss on back edge, 53"H x 16"W. Sold for \$2,750.



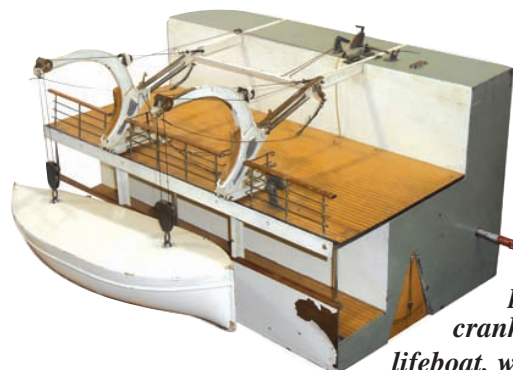
Furniture, corner china cabinet, tiger oak w/fancy stick & ball gallery, applied carvings on upper doors, reverse curved door, very unusual & in Exc cond, 67"H x 39"W x 24"D. Sold for \$3,100.



Farm machinery dealer sign, John Deere Quality Farm Equipment, porcelain, by Burdick Enamel Sign Co., Exc color, VG cond w/small scattered losses, 24"H x 72"W. Sold for \$3,200.



Neon advertising sign, Mazda Lamps Reddi Kilowatt, 3-color neon on metal base w/Mazda Lamps cutout, a Very Rare sign in Exc working cond, 38"H x 34"W. Sold for \$2,500.



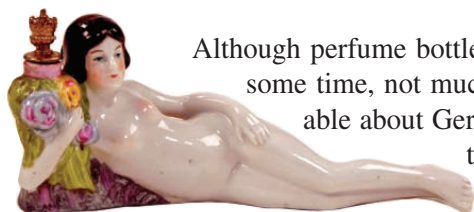
Salesman's sample derrick, working crank lowers & raises the lifeboat, wood & metal w/intricate brass mechanism, highly detailed, early 1900's, paint peel on brass base, o/wise Exc working cond, 15.5"H x 20.5"W x 12"D. Sold for \$2,500.



Winchester Tools 5-panel window display, colorful litho on cdbd w/great graphics, Very Rare & not pictured in Winchester's Book of Rarities, c.1930's, far left panel has sun fading but can be restored, other 4 panels in Exc cond w/great color, 41"H x 101"W (assembled) or 20"W each panel. Sold for \$2,700.

Petroliana, Sunoco gasoline pump w/old glass globe, an older restoration in VG cond w/some minor scratches, 92.5"H x 29"W x 16"D. Sold for \$3,250.

A New and Unique Perfume Bottle Book



Holding a floral bouquet urn, this lovely lady is modeled in a classic reclining nude pose. Rare and unusual in size, she is 6" long.

Although perfume bottles have been a hot collectible for some time, not much information was previously available about German porcelain figurine bottles from the early 20th century that are favored by many collectors. The Crown Top Book – German Porcelain Perfume Bottles, 1920-1939 by Pauline E. Turco is now in print and skillfully and cleverly covers this subject.

The Crown Top Book represents over fifteen years of research and is the first book devoted solely to collecting German porcelain perfume bottles of the Golden Era. In addition to bottles with traditional "crown-top" stoppers that have given the genre its name, this comprehensive work includes bottles with stoppers made of cork, porcelain, and mercury glass, and also atomizers.

A journey to the Golden Era sets the scene for their time in history, while a guided tour of the production process gives the collector a new appreciation for the time, talent and skills involved in the making of these delightful figural perfume bottles. The reader is also introduced to

the manufacturers of Crown Tops and can view photographs of vintage catalog pages.

An entire chapter is devoted to Crown Top reissues, reproductions, fantasies and imposters with detailed information and comparative photos to assist in distinguishing the old from the new and the authentic from the shams. Finally, The Picture Gallery is a virtual museum of over 1200 German porcelain perfume bottles conveniently organized into ten categories, each displayed as a separate gallery. All of the bottles in the galleries are assigned a value level in the Value Guide that collectors and dealers will find helpful.

From the unique capsules of information that accompany selected bottles in the Picture Gallery to the author's colorful category designations of "Kinder Kids", "Heinz Brothers", "Mirror Ladies" and more, Ms Turco has presented a highly informative and lighthearted approach to the subject of Crown Top bottle collecting with a well-organized format and easy-to-read style.

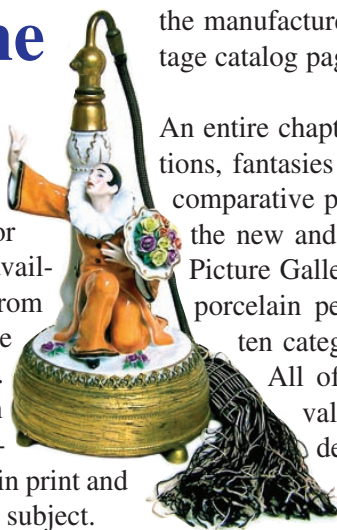
Pauline Turco is well known to perfume bottle enthusiasts for her knowledge on this subject. She has given numerous talks to perfume bottle collectors and to other organizations in search of interesting programs.

Adorable 3.5" bottle of a young child, expressing her amazement at the little ladybug inching up her chest.

The book may be purchased from the author for \$68.00 plus \$4.00 media-mail shipping in the U.S. by check or money order to: Pauline E. Turco, 1002 Vanguard St, Lakeway, TX 78734-5131; or by PayPal to pollyper39@yahoo.com. Shipping outside the U.S. must be calculated by country.



Disney authorized Mickey Mouse perfume bottles. On the left is one of the earlier versions of Mickey, late 1928, with long nose and pie eyes. Center Mickey with gloves is a slightly later version, C.1936. These bottles are enthusiastically sought after by perfume bottle and Disney collectors alike.



An exceptional and rare music box/perfume bottle combination from the William Goebel Company. The beautiful Pierrot figure music box plays 2 melodies and is 10.5" tall.



Flask heads, among the most desirable of German porcelain bottles, came with metal crown stoppers and mercury glass stoppers. Quite the "cat's meow", this flapper has a large spit curl and stylish hair bob.

UPCOMING EVENTS

41st Winter Wisconsin Antiques Dealers Association

Antiques Show & Sale

FEBRUARY 6 & 7 2015

Fri, 11-9 • Sat, 10-5

Waukesha County Expo Center

Waukesha, Wisconsin 53188

I-94 (exit #294, Hwy J), South 1 mile to
1000 Northview Rd. Follow signs West to Show

Over 55 Quality Dealers ~ Authenticity Guaranteed

FREE PARKING • GOOD FOOD

414-510-4441

\$6.00 Good for both days

(\$1.00 OFF With This Ad, up to 2 persons)

www.WisconsinAntiquesDealers.com



FEBRUARY MARCH

6-8

IOWA STATE FAIR
ANIMAL LEARNING CENTER
E. 33RD & E. UNIVERSITY
DES MOINES, IA

6-8

QCCA EXPO CENTER
2621 4TH AVENUE
ROCK ISLAND, IL

FRI 5-9PM • SAT 10AM - 6PM • SUN 11AM - 4PM

712.326.9964 • BRING AD FOR \$1 OFF \$7 ADM.

INDIAN RELIC SHOW

February 8th • 8-3

Schwabenhof

N56 W14750 Silver Spring Dr.

Menomonee Fall, WI

EXPERTS available to identify artifacts
AWARDS for Best artifacts

Sponsored by the Badger State

Archaeological Society

Info: Bill W. 262-246-6147



Northern Illinois

Antiques Dealers Association

Presents its 55th Annual

ANTIQUÉ SHOW

ROCKFORD, ILLINOIS

AT FOREST HILLS LODGE

1601 West Lane Rd., Loves Park, Illinois

(Located 1/2 mile East of Route 251 on Route 173)

SAT., FEBRUARY 21, 10 a.m. to 5 p.m.

SUN., FEBRUARY 22, 11 a.m. to 4 p.m.

ADM: \$6.00 • FREE PARKING • FOOD AVAILABLE

NIADAAntiques.com

The 43rd Annual

MILWAUKEE

ANTIQUÉ BOTTLE & ADVERTISING SHOW

Bottles, Breweriana,
Advertising
150 Sales Tables

Sunday, February 8, 2015

9 am - 3 pm ~ \$5.00 Admission

**** NO EARLY BUYERS ****

Country Springs Hotel

2810 Golf Road

Pewaukee, Wisconsin

(Take I-94 exit 293N

(Hwy T) to Golf Rd)

For Information

bottleshow@charter.net

Wausau

Antique Show & Sale

DC Everest High School
2305 Jelinek Ave, Schofield, WI
4 miles South of Wausau, WI

Feb. 14-15

Sat. 9-5 • Sun. 10-4

50 Select Dealers

30th Year

Adm. \$4.50 Good for Both Days

From the No. So., W.: Hwy 39/51,
Exit 185, go N. to 5th Light, turn E. 1/2 mi.

From the E.: West on Hwy 29 to
Exit 171, go N. 1/2 mi.,

Burger King
turn E. 1/2 mi.

\$50
Door
Prize

Free Parking

Info: AR Promotions • 715-355-5144

www.antiqueshowsinwis.com

ROCHESTER, MN MAYO CIVIC CENTER FLEA MARKET

February 15, 2014

Sunday 10-4

MAYO CIVIC CENTER

30 Civic Center Dr

Dealers can drive in to unload & to load out!

Townsend Promotions

641-832-2700 507-269-1473

Cabin Fever Flea Market

Don't
Miss
This
One!



SUNDAY MARCH 1

9am-3pm • Adm: - \$2.00

Get out of the house and find those Treasures!

Glassware, Dolls, Jewelry, Postcards, Toys,

Books, Coins & Who Knows What!

Knights of Columbus Hall • 1800 S. 92nd St.

WEST ALLIS, WI

"The One Everyone Waits For"

262-338-6064

"a Gathering on the Prairie"

Primitive Country Antique Show & Sale

Otto Center in Arthur, Illinois
1/2 mile south of Arthur

**Saturday, March 7
8 a.m. to 3 p.m.**

45+ Dealers specializing in early
Americana Country Primitives.....
furniture, early lighting, textiles,
stoneware, folk art, baskets,
woodenware & much more

For Information Call Donna Kibler
217-620-8983

hedgeappleprim@hotmail.com
agatheringontheprairie.com

Milwaukee's

Scale Auto, Hobby & Toy Show

SUNDAY, MARCH 1, 2015

10 a.m. to 2 p.m.

Serb Hall • 5101 W. Oklahoma, Milwaukee, WI

Admission \$5.00 Kids 6-12 \$2.00

Preview admission 7:30 a.m. \$20.00

For additional information or table availability call

Jim Welytok 262-366-1314

Visit our Web Site: www.uniqueeventsshows.com

CHICAGOLAND'S PETROLEUM & ADVERTISING SHOW

BY GAS GUYS PROMOTIONS INC

SUNDAY, MARCH 8, 2015

8 AM to 2 PM • ADMISSION \$5

Early Bird Buyers 6:30 AM • \$20 Entrance Fee

CONTACT: TIM SMITH AT 815-436-4733 OR

EMAIL KEVIN GRECO AT: GASGUYS@HOTMAIL.COM

WEBSITE: GASGUYS1.COM

WILL COUNTY FAIRGROUNDS
PEOTONE, ILLINOIS

(35 Miles South of Chicago ~ Exit 327 Off I-57, Then 1 Mile East)

**DEADLINES ARE
MONDAY @ NOON**

SUNDAY MARKET

ANTIQUES

Americana • Folk Art • Advertising • Textiles

Admission \$6 ~ Free Parking ~ 13 & under Free

Interstate Center Main Expo, Bloomington, IL

Exit 160 from I-55 & I-74 Route 9 West

February 22

100 Dealers • Open 8-4 • Food • No Pets

Call Mike Raycraft 217-202-2847

www.thirdsundaymarket.com

THE BREW CITY ADVERTISING & REC ROOM DECOR SHOW

SUNDAY, MARCH 8 - 2015

10 a.m. to 2 p.m.

Serb Hall • 5101 W. Oklahoma, Milwaukee, WI

Admission \$5.00 • Kids 6-12 \$2.00

Preview admission 7:30 a.m. \$20.00

Jim Welytok 262-366-1314

Visit our Web Site: www.uniqueeventsshows.com

Wisconsin Decoy & Sporting Collectibles Show

Saturday, March 14th, 2015

Open to Public • Room to Room

Wednesday Night March 11th

Thursday Afternoon & Night March 12th

Friday Afternoon & Night March 13th

Free Appraisals on Saturday

General Show Open to Public

Sat., March 14th

8AM - 2:30 P.M.



Hilton Garden Inn

1355 W 20th ave

Oshkosh, WI

920-966-1300

BUY • SELL • TRADE • Free Appraisals on Saturday

Old & New Decoys • Duck Calls • Hunting Knives • Animal Traps •

Wildlife Paintings • Prints & Related Arts • Cartridges • Fishing Tackle

Information: Roger Ludwig 920-233-0349

rogfuzz@charter.net

UPCOMING EVENTS

20-30-40 Glass Society of Illinois

Glass Sale & Show

Northlake, Illinois

The Concord Plaza Midwest Conference Center
401 West Lake Street

March 14th ~ 10-5

March 15th ~ 11-4

Admission \$8 per person

Door Prizes • Crystal Repair

Glass Identification • Reference Library

630-851-4504

www.20-30-40glassociety.org/glassshow.html



Annual
Spring

SPRING FOX VALLEY ANTIQUE SHOW

MARCH 14, 2015 ~ 10 - 5

MARCH 15, 2015 ~ 10 - 4

Antiques • Decorative Arts

St. Charles, Illinois

Kane County Fairgrounds

55 DEALERS from 14 STATES

Free Parking • Admission \$8

Luncheon Available

815-838-0606

www.csada.com

ROCHESTER, MN MAYO CIVIC CENTER FLEA MARKET

March 15, 2014

Sunday 10-4

MAYO CIVIC CENTER

30 Civic Center Dr

Dealers can drive in to unload & to load out!

Townsend Promotions

641-832-2700 507-269-1473



ANNUAL BADGER KNIFE SHOW

We appreciate your past attendance - join us again!

MARCH 27-29, 2015

Fri. Noon-7 • Sat. 8-5 • Sun. 9-2

\$5 Adm. • \$8 3-day pass

early bird pass available \$20

Janesville, Wisconsin

Holiday Inn Express & Janesville Conference Center

Exit #171C from I-90 & Hwy 14 east to Deerfield Dr.,
south to 3100 Wellington Place

Knifemaking supplies also available

Badger Knife Club, Inc. ~ Robert Schrap

PO Box 511, Elm Grove, WI 53122

414-479-9765 or badgerknifeclub@aol.com

www.badgerknifeclub.com



UNI-DOME™

MARCH 20-22

2401 Hudson Rd, Cedar Falls, IA

SAVE \$1 on \$8 admission with this Ad

FRIDAY 4-9; SATURDAY 10-6; SUNDAY 10-4

AntiqueSpectacular.com

**PLEASE LET OUR
ADVERTISERS KNOW
WHERE YOU SAW THEIR AD**

ZURKO'S MIDWEST PROMOTIONS 2015 Show Schedule

FEBRUARY

Jan. 31 & Feb. 1 (Sat. & Sun.) Antique & Collectible Fair; DuPage EXPO, St. Charles, IL
Feb. 7 & 8 (Sat. & Sun.) Antique Market; Lake County Fairgrounds, Grayslake, IL
Feb. 22 (4th Sunday) Antique Flea Market; DuPage County Fairgrounds, Wheaton, IL

MARCH

March 7 & 8 (Sat. & Sun.) Antique Market; Lake County Fairgrounds, Grayslake, IL
March 22 (4th Sunday) Antique Flea Market; DuPage County Fairgrounds, Wheaton, IL

APRIL

(Sundays) Shawano Antique & Flea Market starts 45th Big Season; every Sun.-Shawano, WI Fairgrounds
April 11 & 12 (Sat. & Sun.) Antique Market; Lake County Fairgrounds, Grayslake, IL
April 18 (Saturday) Civil War Show; DuPage County Fairgrounds, Wheaton, IL
April 26 (4th Sunday) Antique Flea Market; DuPage County Fairgrounds, Wheaton, IL

MAY

(Sundays) Shawano Antique & Flea Market starts 45th Big Season; every Sun.-Shawano, WI Fairgrounds
May 9 & 10 (Sat. & Sun.) Antique Market; Lake County Fairgrounds, Grayslake, IL
May 10 (Sunday) Antique & Collectible Market; Fairgrounds (M-86) Centerville, MI
May 22 (Friday) Holiday Antique & Flea Market; Langlade County Fairgrounds, Antigo, WI
May 23 (Saturday) "Late-Niter" 3pm-Midnight; Lake County Fairgrounds, Grayslake, IL
May 23 & 24 (2 Day) Massive Holiday Flea Market; Shawano, WI Fairgrounds

JUNE

(Sundays) Shawano Antique & Flea Market starts 45th Big Season; every Sun.-Shawano, WI Fairgrounds
June 20 & 21 (Sat. & Sun.) Antique Market; Grayslake, IL Fairgrounds
Note Weekend Date Change This Year ONLY (June 2015)
June 27 Belvidere "Mid-Niter" Fleas & Fun Market; Boone County Fairgrounds, Belvidere, IL

JULY

(Sundays) Shawano Antique & Flea Market starts 45th Big Season; every Sun.-Shawano, WI Fairgrounds
July 3 (Friday) Holiday Antique & Flea Market; Langlade County Fairgrounds, Antigo, WI
July 4 & 5 (Sat. & Sun.) Massive 2-Day Holiday Antique Market & Flea Market; Shawano, WI Fairgrounds
July 9, 10, 11 & 12 Iowa Toy Barn; during massive Iowa Wisconsin Car Show
July 11 & 12 (Sat. & Sun.) Antique Market; Lake County Fairgrounds, Grayslake, IL

AUGUST

(Sundays) Shawano Antique & Flea Market starts 45th Big Season; every Sun.-Shawano, WI Fairgrounds
August 8 & 9 (Sat. & Sun.) Antique Market; Lake County Fairgrounds, Grayslake, IL
August 9 (Sunday) Antique & Collectible Market; Centerville, MI Fairgrounds M-86
August 15 (Saturday) "Massive" 39th Annual Wheaton "All-Nite" Flea Market 3pm-3am;
DuPage County Fairgrounds, Wheaton, IL

SEPTEMBER

(Sundays) Shawano Antique & Flea Market starts 45th Big Season; every Sun.-Shawano, WI Fairgrounds
Sept. 5 & 6 (Sat. & Sun.) Holiday Antique & Flea Market; Langlade County Fairgrounds, Antigo, WI
Sept. 12 & 13 (Sat. & Sun.) Antique & Flea Market; Lake County Fairgrounds, Grayslake, IL
Sept. 19 (Saturday) Civil War Show; DuPage County Fairgrounds, Wheaton, IL

OCTOBER

Oct. 3 (Saturday) 29th Annual Eagle River, WI Downtown Antique Market; during the "Massive" Cranberry Fest
Oct. 4 (Sun.) "Harvest Fest" Flea Market & Car Show; Shawano, WI Fairgrounds
Oct. 10 & 11 (Sat. & Sun.) Antique Market; Lake County Fairgrounds, Grayslake, IL
Oct. 11 (Sunday) Antique Market; Centerville, MI Fairgrounds M-86
Oct. 24 (Saturday) 5th Annual "Haunted Halloween Flea Market" "Late-Niter"
3pm-Midnight; DuPage County Fairgrounds, Wheaton, IL

NOVEMBER

Nov. 7 & 8 (Sat. & Sun.) Antique Market; Lake County Fairgrounds, Grayslake, IL
Nov. 22 (4th Sunday) Antique Flea Market (Winter-Season Opener);
DuPage County Fairgrounds, Wheaton, IL

DECEMBER

December 12 & 13 (Sat. & Sun.) Antique Market; Lake County Fairgrounds, Grayslake, IL
December 27 (4th Sunday) Antique Flea Market; DuPage County Fairgrounds, Wheaton, IL

Info: 715-526-9769

www.zurkopromotions.com

Email: zurko@frontiernet.net

DePere

Antique Show & Sale
St. Norbert College
601 3rd St., DePere, WI
(Green Bay, Wis. Area)
MAR. 21-22

23 Years • Sat. 9-5 • Sun. 10-4

65 Select Dealers

Clock & Phonograph Restorers

+ Mary Lou's Crystal Repair on site

Adm. \$4.50 for both days • FREE Parking

Win a \$50 Gift Certificate!

Hwy 41; Exit 163, 1 mile East to 3rd

Info: AR Promotions • 715-355-5144

www.antiqueshowsinwis.com

*Oregon GFWC Woman's Club
Presents The 65th Annual*

Oregon, IL Antique Show

Over 50 Dealers from the Midwest

MARCH 28 & 29, 2015

Sat. 9am-5pm • Sun. 10am-4pm

Blackhawk Center • Oregon, Illinois

1101 West Jefferson Street
(one block South of Rt. 64)

Entry \$6.00

- Crystal & China Repair
While You Wait
- Antique Appraisals on Sun.
10-3pm (\$5 per item)
- Plenty of Parking
- Door Prizes • Concessions
- Handicap Accessible

815-732-2219 or 815-732-2560



ANTIQUE SHOW LA CROSSE, WI

APRIL 11 & 12
Sat. 9-5 • Sun. 10:30-3

Over 40 Fine Dealers

Quality Antiques & Collectibles

Admission: \$3.50 ~ 12 under free

Logan High School Field House

1500 Ranger Dr., LaCrosse, WI

Proceeds to Logan Band Program

Information call 608-385-3598

CEDAR RAPIDS ANTIQUE SHOW & SALE

**HAWKEYE DOWNS
FAIRGROUNDS**

4400 6th St. SW • Cedar Rapids, Iowa

APRIL 24, 25 & 26

Friday, 10 am-6 pm • Saturday, 10 am-6 pm

Sunday, 11 am-4 pm

Admission \$6.00 • Good All 3 Days

FREE PARKING

507-269-1473 or 641-832-2700

www.iridescenthouse.com

**DEADLINES ARE
MONDAYS @ NOON**

Midwest Antique & Art Show

The Market for Fine Americana

319-389-7779
and

The Collectors Eye

The Market for Distinctive

Collectibles & Antiques

319-360-4301

SUNDAY, APRIL 12 • 10-4

Expo Center

Hawkeye Downs Fairgrounds

Cedar Rapids, Iowa

\$8 Admission

mwantiqueshow.com

ZURKO • ANTIQUE & COLLECTIBLES MARKETS/EVENTS • 715-526-9769 • www.zurkopromotions.com

• ST. CHARLES •
ANTIQUÉ & COLLECTIBLE MARKET
JAN. 31-FEB. 1

Hours: Sat. 11-5 • Sun. 9-3/\$6

DUPAGE EXPO CENTER

ST. CHARLES, IL (Across from Pheasant Run Resort)

• GRAYSLAKE •
ANTIQUÉ & COLLECTIBLE MARKET
FEB. 7-8 2nd Sun. & Sat. Before

NEW HOURS: Sat. 10-5 • Sun. 9-3/\$7 • Early Sat. 8-10/\$25

LAKE COUNTY FAIRGROUNDS

GRAYSLAKE, ILLINOIS (Rt. 83/1060 E. Peterson Rd.)

• WHEATON •
4TH SUN. ANTIQUÉ MARKET
SUN. FEB. 22

Hours: Sun. 8-3 /\$5 • Early 6-8 AM /\$10

DUPAGE COUNTY FAIRGROUNDS

WHEATON, ILLINOIS (Cty. Farm & Manchester)

• GRAYSLAKE •
ANTIQUÉ & COLLECTIBLE MARKET
MARCH 7-8 2nd Sun. & Sat. Before

NEW HOURS: Sat. 10-5 • Sun. 9-3/\$7 • Early Sat. 8-10/\$25

LAKE COUNTY FAIRGROUNDS

GRAYSLAKE, ILLINOIS (Rt. 83/1060 E. Peterson Rd.)

THE ACTION CLASSIFIEDS

WANTED

MOVIE POSTERS WANTED: 1-Sheets, 3-Sheets, lobby cards, displays, banners, glass slides. Dwight Cleveland, PO Box 10922, Chicago, IL 60610-0922. 773-525-9152 or Fax 773-525-2969. E-mail: posterboss@aol.com 1930B

Wanted: WWII KNIVES

made by THE WISCONSIN VOCATIONAL SCHOOLS
FOND DU LAC & FORT ATKINSON
Also interested in talking with anyone who was given one!
Call 414-651-7422



**DEADLINES ARE
MONDAYS @ NOON**

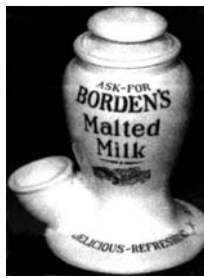
WANTED

MILITARY ITEMS WANTED



*Helmets * Daggers * Medals
* Flags * Uniforms * Wings
* Knives * Swords * Guns
*U.S. * German * Japanese
*Civil War * Span-Am * W.W.I
* W.W. II * Korea * Vietnam

Buying ANYTHING Military Related
Call Jerry 414-727-1190
Email: historicmilitariasservice@yahoo.com



\$ WANTED \$

**Borden's
Malt Jars**

Call Collect Anytime
901-761-9507 1918C

WANTED

Old POST OFFICE LOCK BOX doors, brass eagle, 5-1/2" x 6-1/4", call 847-623-8746 2027P

STAMP COLLECTIONS



Old Postcards & Envelopes

**WANTED...
TOP CASH PAID**

920-499-6886 1911C

STAMPBUYER-WISCONSIN.COM

**PLEASE LET OUR
ADVERTISERS
KNOW WHERE YOU
SAW THEIR AD!**

FOR SALE

TELEPHONES: Over 85 Different genuine 1892-1983, parts, restorations, FREE catalogue. We now offer our entire business for sale 608-582-4124 or www.phonecoinc.com or email phonecoinc@aol.com 1918C

IOWA AMANA solid walnut **DINING ROOM TABLE**, drop leaf, seats 14, buffet 18x50x38 (3 drawers & shelf in lower department), (6) ladder back chairs (new rushing seats). Call 217-787-6620 2027C

PRIMITIVES-cupboards, tables, barrels, bikes, baskets, wood boxes, small store counter, porcelain washtub, wood wash machine, quilts, signs. Located: Brodhead, Wisconsin, call 608-289-1616 2026C

auctionactionnews.com

UPCOMING AUCTION REMINDER

• Friday, January 30 •

Munda & Associates: Unreserved Antiques & Collectibles Auction, 11 AM Central, Munda Auction Center, 1235 S. Adams Ave., Freeport, IL 815-232-8813 Email: munda1@aeroinc.net www.mundauctions.com See page 11 of Auction Action Antique News Issue #2025

• Saturday, January 31 •

Waterloo Auction House: Quality Antiques & Collectibles Consignment Auction, 10 AM, Waterloo Auction House, 255 S. Jefferson St., Waterloo, WI 920-478-7379 www.waterlooauction.com See page 13 of Auction Action Antique News Issue #2025

• Tuesday, February 3 •

Major Wisconsin Auctions: Public Auction, 9 AM, Jefferson Co. Fair Park, 503 N. Jackson Ave., Jefferson, WI 920-674-5262 Greg Klug www.wisauction.com See page 14 of Auction Action Antique News Issue #2026

• Thursday, February 5 •

Midwest Auctions, Inc.: American Indian & Related Auction, 10:30 AM, Community Center, 211 3rd Ave., Low Moor, IA 563-682-7149 Russell Hayward Email: mwa@netins.net www.mwauctions.com See page 9 of Auction Action Antique News Issue #2026

• Saturday, February 7 •

Dorshorst Auctions: Train Auction, 9:30 AM, Dorshorst Auction Bldg., 113 N. Main St. (Hwy. 73), Deerfield, WI 608-764-8233 or 608-628-1631 Marv Dorshorst www.geocities.com/dorshorstauctions See page 10 of Auction Action Antique News Issue #2026

• Friday, March 20 •

W. Yoder Auction Service: Annual Spring Sign & Advertising Memorabilia Auction, 9 AM, W. Yoder Auction Center, N2475 13th Gateway, Wautoma, WI 920-787-5549 Cell: 920-295-2644 Wayne Yoder www.wyoderauction.com See page 10 of Auction Action Antique News Issue #2026

• Saturday, March 21 •

W. Yoder Auction Service: 400+ Toys Auction, 9 AM, W. Yoder Auction Center, N2475 13th Gateway, Wautoma, WI 920-787-5549 Cell: 920-295-2644 Wayne Yoder www.wyoderauction.com See page 10 of Auction Action Antique News Issue #2026

**AAAN WE'RE
EVERYWHERE
auctionactionnews.com**

**Give a Gift Subscription
to the Antique Lover
in your life - Call today:
715-524-3076**

“Wisconsin Milk Bottles” Exhibit at the 40th Winter WADA Antiques Show

Article & photos by Debbie McArdle
(Wisconsin Antiques Dealers Association)

Scott Rizer was just 15 years old when he saw his neighbor's milk bottle collection. Now, 40 years later, he will be exhibiting his own collection at the 40th Winter Wisconsin Antiques Dealers Association Show, Friday and Saturday, February 6 and 7, 2015 in Waukesha, a Milwaukee suburb.

Most prized and rare among his collection are a Brinsmere Pure Goat Milk bottle (one quart) and a P.J. Grogan Nursing bottle (one quart). There will be something of interest for everyone. After all, after 4 decades of collecting in the Dairy State, the pickings were good! But it's not just about the visual connection with the iconic milk bottle. It's also about the history of the milking industry.

Prior to the use of milk bottles, milk was delivered in 10 to 40 gallon cans. According to Scott, the first reported use of milk bottles was in Milwaukee and offered vast improvements in milk quality and safety. Other counties soon followed with Green Bay and La Crosse in 1901, Eau Claire in 1902, Beloit in 1906 and Kenosha in 1908. In 1917, milk sales in bottles amounted to over 86% of the milk sold in Milwaukee. Eventually, local health ordinances required that all milk sold must be in bottles.

Approximately 3,000 milk distributors existed around 1900 in Wisconsin. This number greatly decreased as ordinances were put in place.

Dairy size determines the number of bottles available to collectors. The chances are very good that bottles still exist from the larger dairies. However, as many dairies merged or closed entirely, bottles were broken or reused.

The most commonly used bottle sizes for delivery of milk and cream prior to 1940 were the half pint, pint and quart. The quart was used mainly for milk, the pint and half pint for cream. Larger bottle sizes were



Examples of cream-top milk bottles
(Photo courtesy of: Friends of the
Wisconsin Historical Society)

uncommon due to lack of refrigerator space. The quart remained a very common size during the 1940's. However in the late 1940's and early 1950's half gallon and gallon sizes became more popular. There are two other bottle sizes occasionally found in Wisconsin; the 1/4-pint and 1/3-quart.

Milk bottles used in Wisconsin came in many shapes and styles. One of the earliest bottles used in Wisconsin were tin-top bottles. These had a tin cover held on by a wire clasp. These bottles were round with embossed (raised) letters on the glass. Round, embossed bottles were used from the 1890's to the 1940's. Square or rectangular embossed bottles were used in the 1950's and 1960's. Pyroglazed or color-lettered milk bottles began in the 1930's and were used up to the early 1970's.

Other special types of bottles were used by Wisconsin dairies. Cream-top bottles have a specially designed bulbous neck that allowed the cream to rise upward and eventually be separated from the milk. Cream-top bottles are embossed in round shapes and pyroglazed in round and square. Over 75 dairies used cream-top bottles in Wisconsin. Two variations of the cream-top bottle are the Baby Face and the Cop Top. Amber or brown bottles were used by some Wisconsin dairies. Square quarts and rectangular half gallons were the most common sizes.

Cottage cheese or sour cream containers are jars with a wider mouth. They are round in shape and came in 8, 12 or 16 ounces. They appear in both embossed and pyroglazed.

began to go to the local grocery store to purchase their milk. As time went on, paper containers began to be used in the dairy industry.

When asked about his most interesting “picking” story, Scott will tell of a call from someone who had milk bottles for sale - only the seller neglected to mention the bottles were on display in a real-live, functioning chicken coop! It was a messy but wonderful time, yielding many great bottles plus a lightning rod ball collection.

Come to the WADA show and connect with Scott. Share your collecting stories and learn more about your own finds! Wander the three large rooms at the show featuring 55 of the Midwest's top dealers, each offering a choice variety of authentic antiques. The Waukesha County Expo Center's Forum Building, 1000 Northview Road, Waukesha, WI 53188, is the home of this semi-annual event. Show hours are Friday, 11-9 and Saturday, 10-5. In addition to the good food customers have come to expect, a Friday Night Fish Fry will be served late Friday afternoon and evening so bring your appetite! Admission of \$6.00 funds scholarships for high school students as well as grants to Wisconsin historic and heritage groups.

A \$1.00 discount coupon for admission to the Antiques Show is available at: <http://www.WisconsinAntiquesDealers.com/> Free parking. ATM on premises.

An added bonus, the Red Wing Collector's Society will be hosting their Mid-Winter Show and Sale at Olympia Resort in nearby Oconomowoc, Saturday, Feb. 7, 1:30-4:00. At 5:00 pm an auction will follow, a fundraiser for the Pottery Museum of Red Wing, offering a wide variety of Red Wing Stoneware, Dinnerware and Art. Always entertaining, room sales will be taking place at the resort where RWCS members prop open their hotel-room doors, allowing shoppers to enter. Visit <http://www.redwingcollectors.org/> for more info.



When out & about, let our advertisers know where you saw their ad!



Be Sure To Check Out Our **“SHOP ITEMS FOR SALE”**
(with photos & Prices) of Featured Items **FOR SALE**
from our Antique Mall and Shop Advertisers
www.auctionactionnews.com

Northern Illinois Antiques Dealers Association *Presents its 55th Annual* **ANTIQUÉ SHOW**

**DOOR
PRIZES**

**ROCKFORD, ILLINOIS
FOREST HILLS LODGE**

(Located 1/2 mile East of Route 251 on Route 173)

SAT., FEBRUARY 21, • 10 am to 5 pm

SUN., FEBRUARY 22, • 11 am to 4 pm

Donation \$6 ~ \$5 With This Ad

40 Quality Dealers with a wide variety of Antiques, including Furniture, Architectural Fragments, Woodenware, Textiles, Stoneware, China, Glass, Silver, Jewelry, Toys and More!

Come Celebrate Our 55th Year With Us!

Gift Certificate Drawings Will Be Held Both Days!

FREE Parking ~ Food Available

Show profits donated to Historic Preservations & Scholarships

For More Information: call 815-761-1444 or

[www. NIADAAntiques.com](http://www.NIADAAntiques.com) ~ email: NIADA@aol.com

Antique & Collectibles Show Booth Space Available

Article by Mary Hodson
(Mental Health America of Porter County)

Mental Health America of Porter County is now accepting applications from Antique and collectible dealers interested in securing booth space at our annual Antique and Collectibles show. Show dates are Saturday, March 7th 9a.m.-4p.m. (CST), and Sunday, March 8th, 10a.m.-4p.m. (CST). Appraisals will be available on site both days. The show is held at the Porter County Expo Center at State Road 49 and Division Road in Valparaiso, Indiana.

Proceeds benefit the programs and services of Mental Health America of Porter County a nonprofit organization promoting mental wellness for over 50 years throughout Porter County.

For information call Mary Hodson at (219) 462-6267 or e-mail mmhodson@mhpc.org

**Is Your Collector Club Looking
for New Members? Send us a
Press Release describing what
you're all about!**

THE ORIGINAL OLMSTED COUNTY

GOLD RUSH

ANTIQUÉ SHOW and FLEA MARKET

ROCHESTER, MN • FAIRGROUNDS

MAY 8, 9 & 10, 2015

America's #1 Shopping Market

1400+ Dealers * 10 Bldgs * 52 Acres

Buildings & Grounds Open 8am to 6pm

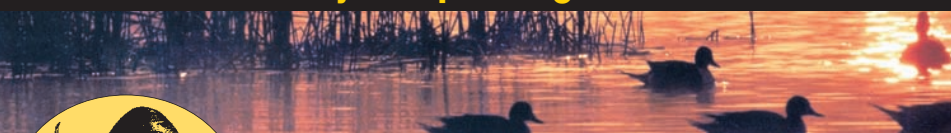
Free Admission/Parking \$5

507-269-1473 or 641-832-2700 • www.townsendshows.com

UPCOMING SHOW: AUGUST 14, 15 & 16



Wisconsin Decoy & Sporting Collectibles Show



SHOW: Saturday, March 14th, 2015

8:00am - 2:30pm

Open to Public • Room to Room

Wednesday Night March 11th

Thursday Afternoon & Night March 12th

Friday Afternoon & Night March 13th

*For more information on the show or appraisals,
contact Roger at 920-233-0349*

Hilton Garden Inn - 920-966-1300

1355 W 20th Avenue • Oshkosh, WI 54902

Buy • Sell • Trade • Free Appraisals on Saturday

*Old & New Decoys • Duck Calls • Hunting Knives • Animal Traps • Wildlife
Paintings • Prints & Related Arts • Cartridges • Fishing Tackle*

**DEALERS:
DOES YOUR ANTIQUE SHOP OR MALL
ADVERTISE WITH**

Auction Action Antique News?

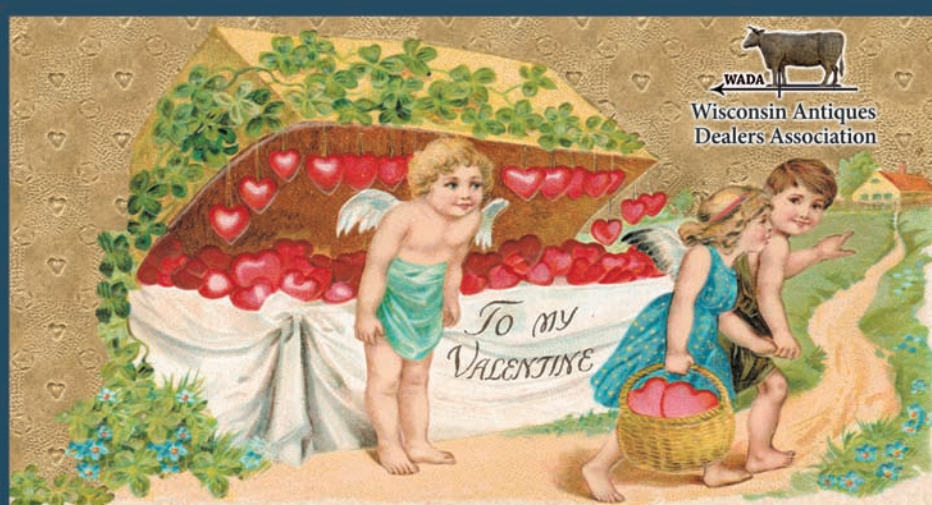
IF NOT? WHY NOT?

WITH OVER 1,000,000 HITS MONTHLY ON OUR WEBSITE

YOUR ADS ARE SEEN WORLDWIDE

New Photos from our advertisers ads are featured

WADA WINTER SHOW & SALE



40th Winter Wisconsin Antiques Dealers Association Show

55+ Quality Dealers • Authenticity Guaranteed

Waukesha County Expo Center

February 6 & 7, 2015
Fri. 11-9 Sat. 10-5

Admission \$6.00 (good both days)

• Benefits Wisconsin grant & scholarship programs

Special Educational Exhibit: Wisconsin Milk Bottles

Friday Night Fish Fry Dinner!

• Free Parking • Good Food • Five \$50 Gift Certificates!

Directions: I-94 to Hwy J (exit 294)
 South 1 mile. West to Show

GPS: 1000 Northview Road
 Waukesha, WI 53188

\$1 off with this card (up to 2 persons)

For information (414) 510-4441 or www.WisconsinAntiquesDealers.com

Henry Teloh Antiques

615-330-4224 or
mmht2@charter.net
 Madison, Wisconsin



Booth #8



WWII Navy duffle bag, name of sailor and other ports on back.

Southern high chairs, western North Carolina, Middle Tennessee, Circa 1850-70.



Scinde flow blue china, Circa 1840.



Colt Army conversion revolver, Circa 1871-3

Angus Antiques

Rick & Jackie Kojis

Booth #12

See you at the WADA Show!

AngusAntiques@wi.rr.com
 (414) 510-4441

1890's Bliss & McLoughlin Brothers
 Puzzles & Games



Portobello Road Antiques & Appraisals

414-630-5624 or
PortRoadAntiques@wi.rr.com



Booth #46



1920 Rath's 8" globe with some interesting post-Treaty of Versailles borders in German.



Circa 1910 WMF copper and brass claret.



Examples of cream-top milk bottles (Photo courtesy of: Friends of the Wisconsin Historical Society)

Wisconsin Milk Bottles On Exhibit at the 40th Winter WADA Antique Show

Scott Rizer was just 15 years old when he saw his neighbor's milk bottle collection. Now, 40 years later, he will be exhibiting his own collection at the 40th Winter Wisconsin Antiques Dealers Association Show, Friday and Saturday, February 6 and 7, 2015 in Waukesha, a Milwaukee suburb.

Most prized and rare among his collection are a Brinsmere Pure Goat Milk bottle (one quart) and a P.J. Grogan Nursing bottle (one quart). There will be something of interest for everyone. After all, after 4 decades of collecting in the Dairy State, the pickings were good! But it's not just about the visual connection with the iconic milk bottle. It's also about the history of the milking industry.

Come to the WADA show and connect with Scott. Share your collecting stories and learn more about your own finds! Wander the three

large rooms at the show featuring 55 of the Midwest's top dealers, each offering a choice variety of authentic antiques. The Waukesha County Expo Center's Forum Building, 1000 Northview Road, Waukesha, WI 53188, is the home of this semi-annual event. Show hours are Friday, 11-9 and Saturday, 10-5. In addition to the good food customers have come to expect, a Friday Night Fish Fry will be served late Friday afternoon and evening so bring your appetite! Admission of \$6.00 funds scholarships for high school students as well as grants to Wisconsin historic and heritage groups.

A \$1.00 discount coupon for admission to the Antiques Show is available at: <http://www.WisconsinAntiquesDealers.com/> Free parking. ATM on premises.

February 6 & 7, 2015

Woodwright's River City Antique Mall

www.RiverCityAntiqueMall.com

328 S. Fulton Street, Princeton, WI 54968
Hwy. 23 & 73 • 920-295-3475

Layaway &
Delivery
Available

Open 7 Days: Hours 10-5

Wisconsin's Famous Princeton Flea Market Saturday's



Oak buffet,
original mirror &
hardware, \$1,500.
NOW \$1,200
Dlr PPR

Old Hickory three hoop
child's
chair/Adirondack
mission, signed on
leg, old paint, \$145.
NOW \$116
Dlr COF



Cranberry glass
hanging oil lamp
B&H Company, \$595.
NOW \$476
Dlr DA

Chinese junk boat
made in
1940's to
1950's,
45"L, \$375.
NOW \$300
Dlr DA



Cranberry Mary
Gregory with deer,
\$85. **NOW \$68**
Dlr AJ



Santa chocolate
molds, \$89-\$119.
NOW \$72-\$96
Dlr AJ



Outstanding
Gurney ice box,
super rare, very
ornate, \$6,195.
NOW \$4,956
Dlr WAM



1800's Hard to
find hooded jelly
cupboard, \$1,895.
NOW \$1,516
Dlr COF



9th Annual
Customer
Appreciation
Sale!

Our One & Only
Sale All Year!

Valentine's
Week
February
13 - 22

Up to 20% OFF
Our Already Great Prices!
(On Items NOT Marked
SALE or FIRM)

Refreshments
&
Snacks
Offered both
weekends



Lake Geneva

262-248-6345

ANTIQUE MALL

"We Got
The Old Stuff"

829 Williams Street, Lake Geneva, WI 53147

OPEN 7 DAYS A WEEK • 10-5 E-MAIL: lgam@genevaonline.com

HAMMERTON'S
NUT BROWN ALE
one shilling PER FLAGON

Hammertons Nut Brown Ale sign,
\$69. Dlr 32

MEMBER
PURE MILK
PRODUCTS
CO-OPERATIVE

Pure Milk Products sign,
\$85. Dlr 32

Fruit of the Loom
Fine Nylons leg display,
\$55. Dlr BRN



Squash
blossom
necklace,
\$420.
Dlr 25

Industrial work cart,
\$385. Dlr 27



Procks Crocks & Antiques

W4514 Highway 63, Springbrook, WI 54875

Open Daily 9-5 ~ 715-635-3655

~ prockscrocksantiquetstoneare.com ~ email: unclewilbur13@hotmail.com

Always Buying Quality Antiques



Blue & white leaf and
scroll stoneware pitcher,
Dows Iowa adv. \$450

20 gallon Red Wing crock
with huge butterfly.
\$2,000



Quick Meal salesman
sample stove. 26" tall.
\$2,450



Engman Matthews
salesman sample
stove. 30" tall.
\$2,000

30 gallon Red
Wing crock with
double leaves.
\$6,000



Check out our Facebook Page - <http://www.facebook.com/Lake-Geneva-Antique-Mall>