

# Auction Action Antique News

Online! Always On Time!

Over One Million Hits

[www.auctionactionnews.com](http://www.auctionactionnews.com)

Help Recycle,  
Buy Antiques!

November 27, 2018 Vol. 24 No. 20

News Periodical Mailed on November 21

## Northern Wisconsin Antique Dealers Association's Holds Annual Chippewa Falls Antique Show & Sale in October

Article & photos by Lynn Koszuta

It was finally here, The Chippewa Falls Antique Show & Sale on Saturday, October 20th & 21st, Sponsored by the Northern Wisconsin Antique Dealers Association. We got an early start, we started our journey at 7:00am to travel 2 1/2 hours to the show. The day started out very cold and windy, we traveled through rain, snow, mix, and finally sun, but we were determined to get there, and it was worth it!

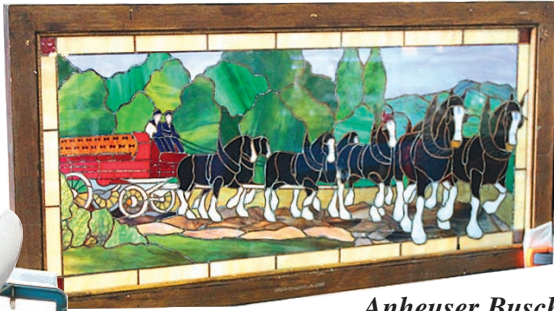
Continued on  
pages 6, 7 & 8



**Tonka Marine Service boat hauler, \$460. Second Chance Antiques, 920-470-2319**



**Green Satin lamp, \$895. Sandra Ann-Tiques, 715-229-2628**



**Anheuser Busch, prototype for signs, one of a kind, leaded stained glass, early 1980's, includes letter of provenance from owner. \$3,995. The Missing Link, 763-257-7073**



**Folk Art Carousel Horses, \$875 ea. Times Treasures, 608-617-7066**



**German made plaster paris, wood & metal window carolers, \$595. Virginia Wierman, 715-720-9092**

## Strong Prices on Jewelry and Native American Artifacts at Rainbow Traders

Article & photos by Rainbow Traders

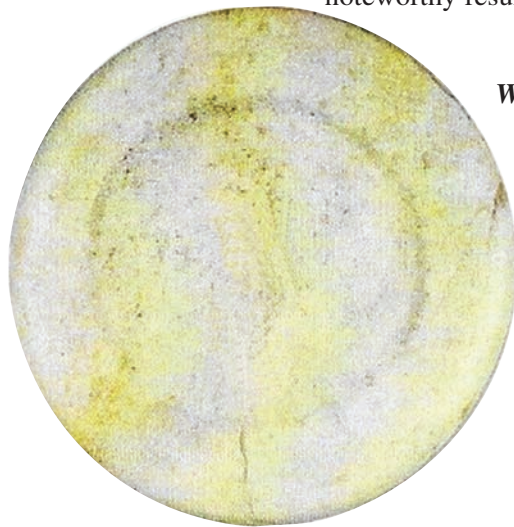
The December 9th, auction saw very good prices for the jewelry of the noted Navajo Silversmith Allison Lee, spirited bidding on the 13" Dance sword from Union Co., Illinois to \$13,250. The white quartz Missouri Discoidal went to \$5,500 and the Illinois notched Hoe to \$3,100. A 17" long St. Clair Co., Illinois spade made \$9,100, which may be a new world's record for this type of relic. There were some small relics such as lot 3, a Clovis for \$2,200 and lot 5, a damaged Folsom at \$1,150 that also brought noteworthy results.

Continued on pages 15 & 16



**Mississippian dance sword, thin outstanding workmanship, Glossy tan & cream Burlington. It brought \$13,250.**

**Mill Creek chert Spade, Cahokia Mounds area. Outstanding form, pictured in Who's Who #1. It brought \$9,100.**



**White quartz cupped Discoidal, outstanding polish, form and material. It sold for \$5,500.**

**3/4 grooved Ax, Pike Co., IL. Brown speckled quartzite, outstanding form. It sold for \$5,500.**



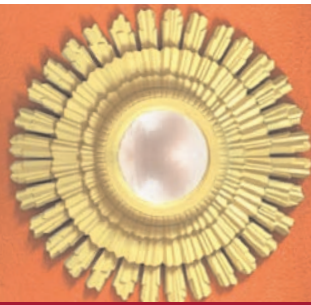
**Hopewell platform Pipe, Ohio. High polished dense sandstone, heavily patinated. It brought \$3,900.**



# Gurnee

## ANTIQUQUE MARKET

GURNEEANTIQUEMARKET.COM



Mon-Sat 10am to 5pm  
Thurs-10am to 8pm  
Sun-12pm to 5pm

5742 Northridge Drive  
Gurnee, IL (847) 782-9094



## Model Car, Toy & Racing Memorabilia Show

### Milwaukee Miniature Motors

Plastic Model Kits, Promos, Slot Cars, Hot Wheels, Pressed Steel & Diecast Cars, Handbuilts, New & Vintage Toys, All Types of Racing Memorabilia

**DECEMBER 16th, 2018**  
10AM - 2PM

Admission \$5 • Age 12 & under Free with Adult • Free Parking • Door Prizes

Meet Dealers & Collectors from Coast to Coast!

Waukesha County Exposition Center - Forum Building  
1000 Northview Rd. ~ Waukesha, WI 53188

Information & Vendor Registration: Jim Welytok at 262-366-1314  
www.uniqueeventsshows.com

## Fox River Antique Mall

1074 S. VanDyke Rd., Appleton, WI (Between Prospect BB & College Ave)

Welcome Visitors!  
Open: 10-6 Daily

**920-731-9699**

Where the Past....  
Meets the Present

Fall  
Sale!

Nov. 17 - 25

- Largest Antique Mall in Northeast WI
- 30,000 Sq. Ft. & Over 165 Dealers
- Large Selection of Antiques & Collectibles
- Dolls • Furniture • Glassware • Jewelry & More!

• 30 Day Layaway • Gift Certificates • Visa & MC Accepted!

## TINLEY PARK

### Annual Holiday TOY SHOW

SUNDAY, DECEMBER 2 • 10-2

Tinley Park High School

6111 W 175th St. • Tinley Park, Illinois

Admission \$6.00 Kids 6-12 \$2.00  
Preview admission 7:30 a.m. \$20.00

Info Call Jim Welytok 262-366-1314  
Web Site: www.uniqueeventsshows.com



Prime Promotions

Saturday & Sunday

## Metro Antiques & Collectibles

JANUARY  
12 & 13, 2019

Saturday 10am-5pm  
Sunday 10am-3pm

## Winter Show

Reserve Your Booth TODAY...  
This Show Will Fill Quickly!!!

Call: 612-961-3401 or visit  
www.MNAntiqueShows.com  
to download a contract.



FREE  
PARKING

"You never know  
what treasures you'll  
find at a Prime  
Promotions Show  
until you get there!  
Don't miss this one!!!"

ADMISSION  
\$7.00  
\$1 OFF with  
this ad!



ALL INDOORS at the  
MN STATE FAIRGROUNDS  
WARNER COLISEUM

1265 N Snelling Ave • St. Paul, MN 55108  
Located in St. Paul on Snelling Ave 3 mi N of I-94, 2 mi S of State Hwy 36



- FOOD IS AVAILABLE • FREE PARKING
- DRAWING FOR TWO \$25 GIFT CERTIFICATES EACH DAY.
- JOIN IN OUR FREE SCAVANGER HUNT AND KEEP YOUR FIND.

WASHINGTON COUNTY FAIRGROUNDS  
HWY 45 & PLEASANT VALLEY RD.  
WEST BEND, WISCONSIN 53095

INFO AT WWW.WESTBENDANTIQUESHOW.COM OR 920-475-6508

Dealer Inquiries Are Always Welcome...

Over a Million Hits

[www.auctionactionnews.com](http://www.auctionactionnews.com)

\*\*SAVE THE DATES\*\* Prime Promotions 2019 Schedule: April 13 & 14 • September 28 & 29

**Tomah Antique Mall  
Gift Shop & Gallery**  
Toll Free 888-757-0044

*Fun, Funky & Fabulous!* OPEN 7 DAYS A WEEK  
9:00am - 5:00pm



**Antiques • Vintage • Gifts  
Crafts & Art**

**1510 Eaton Ave., Tomah**  
Junction I-94 & Hwy 21 East, Exit #143, Tomah  
info@antiquemalloftomah.com • www.cranberrycountrymall.com

**Antique Market I**  
In Business Since 1982

Open 7 Days A Week!  
10:00am til 5:00pm



**11 North 3rd Street  
St. Charles, IL 60174  
630-377-1868**

**ANTIQUES**  
*Volo 4 Malls*  
ANTIQUÉ SHOPPING TO THE EXTREME!

**400 DEALERS**  
Small collectibles to large furniture.  
Spend the day!

Open daily 10-5pm  
Daily updates "Volo 4 Malls"

**815.344.6062**  
Creative & ambitious sellers wanted!

Three-Story Antique Mall **Call it New Call it ANTIQUE**

Hours: M-F 10-6 pm  
Sat. 10-5 pm  
Sun. 11-4 pm  
Easy Intake at our rear Clark & Water St. entrance

**823 Main St.  
Downtown Stevens Point, WI**  
**715-544-6024**

- Thousands of items uniquely displayed
- Courteous & helpful staff
- Consignment available
- Comfort while others shop
- Main anchor to the downtown square
- Shop & Browse this Unique Destination!

**East State  
Antique Mall**  
815-229-4004

**Mall Wide Sales**  
Nov. 20 thru Jan. 6



**5411 E. State St., Rockford, IL 61108**

**Ebert's ANTIQUES** Open All Year Round. 7 days a week!

Manitowoc, WI • I-43 @ Exit #152  
920-682-0687

**A MILLION DOLLAR INVENTORY!**

**WANTED:** Pine & oak furniture.  
We pay cash. Never any fees or commissions tacked on.

**THOUSANDS OF FURNITURE PIECES**  
Original or Refurbished  
Wood Decoys • Crocks • Lamps  
• Artwork • Primitives & More  
ebertsantiquesmanitowoc.com

~ We Have Architectural Items ~

**Wrightstown  
Antique Gallery**  
Over 40 Years Experience



7142 Shanty Rd., Wrightstown WI  
920-532-4308

**STORE HOURS:**  
Wed-Thur-Fri 11am - 5pm  
Saturday 11am-4pm Sunday by appointment or chance

239 Whitney St., Columbus, WI  
920-623-1992

**COLUMBUS ANTIQUE MALL MUSEUM**  
Wisconsin's Largest Antique Mall  
Open Daily- 8am - 4pm

- 222 Dealers • 444 Booths
- 78,000 sq. ft.
- 3rd Floor Furniture

**CUSTOMER APPRECIATION WEEK**  
**December 3 - 9, 2018**  
20% Discount on all items \$10.00 & over!  
(Except firm or red tagged items)  
www.columbusantiquemall.com

*A Gathering on the Prairie*  
A gathering of over 45 vendors, selling the finest of Country Primitive Wares.

**Saturday, March 2nd, 2019 ~ 8am to 3pm**  
**Primitive Country Antique Show and Sale**






Specializing in  
Early Americana Country Primitives...  
Painted Furniture, Pottery, Early Lighting,  
Quilts & Textiles, Stoneware, Folkart,  
Baskets, Vintage Toys, Woodenware  
and Much More

**Otto Center - Arthur, Illinois**  
**(1/2 Mile South of Arthur)**

For information call Donna Kibler: Hedgeapple Primitives  
217-620-8983 or agatheringontheprairie.com  
Next Show: November 9th, 2019

**The Great Milwaukee Classic  
Antique & Collectible Fishing Tackle Show**  
**January 18th & 19th, 2019**

Friday 10:00am-3:00pm ~ Saturday 9:00am-Noon  
Breakfast & Lunch Available

Sheraton Milwaukee Brookfield  
375 S. Moorland Road  
Brookfield, Wisconsin

**Buy, Sell and Trade! ~ FREE Appraisals!**  
**Collectors from around the country!**

The show features antique & collectible fishing tackle dating from the 1800's to today's contemporary makers. In addition to rare & unusual classic fishing tackle, our show offers a wide selection of fishable gear. It is sponsored by the National Fishing Lure Collectors Club, a non-profit organization dedicated to fostering awareness of lure collecting. Come & enjoy the displays & vendors from across the country!

For more information contact: Chris Slusar 262-960-2230 • cjslusar@gmail.com

**Spread the Joy of Antiques**  
**This Holiday Season!**  
**Give the Gift of Auction Action**  
**Antique News!**



**Give us a call today**  
**715-524-3076**

# Out & About Happy Thanksgiving



Please mark your calendars for  
Saturday, November 24th  
Small Business Saturday.

So, spend the day celebrating and supporting your local small businesses for all that they do for your communities. Stop by that family restaurant you keep saying you would like to try. Go to your local True Value Hardware store for Christmas lights. Stop by that unique clothing store downtown you drive past everyday, that has cute items in the window. Every little bit of business helps them to keep helping support your communities. Spread the word!

Check out those shop and mall Holiday Sale ads.

## When Out and About this weekend, be sure to check out:

Chicago Pop Culture Show & Sale on Saturday, November 24th & Sunday, November 25th. Located at Pheasant Run Mega Center in St. Charles, Illinois. See their ad in Auction Action Antique News.

Van's Antiques is having their End Of Season Blowout Sale  
Now through Friday, November 30th.

Located at N1937 Highway 14, Walworth, Wisconsin.  
See their ad in Auction Action Antique News.

East State Antique Mall is having their Holiday Sales  
Tuesday, November 20th through Sunday, January 6th. Located at East State Antique Mall, 5411 East State Street, in Rockford, Illinois.  
See their ad in Auction Action Antique News.

Lake Geneva Antique Mall is having their Christmas Sale  
Friday, November 23rd thru Monday, December 24th.  
Located at 829 Williams Street, Lake Geneva, Wisconsin.  
See their ad in Auction Action Antique News.

MNM Antique Mall is having their Holiday Sale  
Friday, November 23rd thru Monday, December 31st.  
Located at 501-A S Fulton Street, Princeton, Wisconsin.  
See their ad in Auction Action Antique News.

Pat's Gallery of Antiques is having their Christmas Open House on  
Friday, November 23rd, Saturday, November 24th & Sunday, November 25th.  
Located at 861 Grove Street, Fond du Lac, Wisconsin.  
See their ad in Auction Action Antique News.

## Mark your calendars for:

East State Antique Mall is having their Customer Appreciation Dealer  
Dealing Days & Cookies and Tea on Saturday, December 8th.  
Located at East State Antique Mall, 5411 East State Street, in Rockford, Illinois.  
See their ad in this week's issue of Auction Action Antique News.

Columbus Antique Mall is having Customer Appreciation week  
Monday, December 3rd thru Sunday, December 9th.  
Located at 239 Whitney Street in Columbus, Wisconsin.  
See their ad in last weeks issue of Auction Action Antique News.



My friends & I got together for a Friendsgiving. We all rarely see each other as a big group, so this was a great opportunity for all of us to bond. The house was filled with laughter & joy throughout the entire night. It was a lot of fun, & I am so thankful for all my friends at Lakeland!

# AUCTION ACTION ANTIQUENews

Your Midwest Connection  
[www.auctionactionnews.com](http://www.auctionactionnews.com)



## Your Weekly Auction & Antique Guide

Phone: 715-524-3076 Fax: 1-800-580-4568  
E-Mail: [auction@auctionactionnews.com](mailto:auction@auctionactionnews.com)  
Web Site: [www.auctionactionnews.com](http://www.auctionactionnews.com)

### Auction Action Antique News

Published weekly

(except 3rd & 4th week in December)

Auction Action News Inc.  
1404 E. Green Bay St.,  
Shawano, WI 54166-2258

Fax toll-free: 1-800-580-4568 (please call first)

E-Mail: [auction@auctionactionnews.com](mailto:auction@auctionactionnews.com)

Office Hours: 8-4:30 Monday & Tuesday

Office Hours: 9-4 Thursday & Friday

Periodicals Postage Paid

at Shawano, WI 54166.

USPS Publication #019-243

POSTMASTER: send address changes to  
Auction Action Antique News  
1404 E. Green Bay St.,  
Shawano, WI 54166-2258

### Display Advertising Rates

Size-----Rate

1/8 Page-----135.00

3/16 Page -----196.00

1/4 Page -----284.00

1/2 Page-----582.00

Full Page -----1,164.00

Center two pages-----2,328.00

Ad Set-up Fee -----30.00

(fee will be credited to your  
account when ad runs.)

No charge for Ad Estimates!

### Call for rates on multiple insertion ads

### Ad deadline Mondays Noon

Ads sent without an insertion  
date will be published in the  
next available issue.

Photo deadline Prior Friday: Noon  
We will not be responsible for errors in ad copy  
that is hand written or taken by phone.

**Subscription rate** — \$36.00 per year (50 issues mailed). **First Class mailing is Available upon request at the rate of \$75 per year.** Digital Subscription plus mailed subscription \$57 or Digital Subscription only \$28.00 (fast internet connection & password needed for Digital edition).

**Late ads** — Late ads will be accepted if space and time permit. Ad deadlines may be adjusted due to holidays. Advance notice will be included in prior issues.

**Telephone ads** — Ad copy will not be accepted over the telephone. All ads must be typed and received by the copy deadline through either mail, express delivery or fax or E-mail.

**Photo Requirements: Full color photos are available for any ad \$3 per Photo.**

**(limited pages available for full color) Please call to reserve color.**

**Please Call Before Sending Color PDF Files. All color PDF files must be in cmyk color.**

**Call for column sizes and other PDF requirements before sending.**

Auction Action Antique News is a service to its advertisers and is not responsible for any auctions that are advertised. The publisher will not be responsible or liable for misprints, typographical errors or alleged misrepresentations in any ad. The publisher reserves the right to edit or refuse any advertising deemed unsuitable for the publication. The advertising appearing in Auction Action News including all photographs, is the property of Auction Action Antique News and any reassignment of said advertising cannot be reproduced without the expressed written consent of Auction Action News. Auction Action Antique News will not knowingly publish Commercial Web Sites. All Advertisers Individual Business Web Sites are encouraged and will be published in all ads. All material and photos submitted to Auction Action Antique News becomes the property of said publication and may be reprinted at our discretion.

**Editors and Publishers: Bob & Jeni Olsze**

**Production & Graphic Design:** Tom Hutchcraft, Michelle Hoisington, Renee Wiskow & Lynn K

**Editor:** Michelle Hoisington • **Assistant Editor:** Renee Wiskow

**Bookkeeper:** Michelle Hoisington • **Web Design:** Lynn K

**Contributing Writers:** Michelle Goltz • Jack Kelly

# DEADLINE DATES

**DEADLINES ARE  
MONDAYS AT NOON**

**PAPER IS MAILED  
EVERY WEDNESDAY**

**PAPER IS DATED  
FOLLOWING TUESDAY**

December

S	M	T	W	T	F	S
		26	28			1
2	3	4	5	6	7	8
9	10	11	12	13	14	15
16	17	18	19	20	21	22
23	24	25	26	27	28	29
30	31					

# Auction Action Antique News Christmas Coloring Contest

M

E

R

R

Y



C

H

R

I

S

T

M

A

S

<http://www.coloring-book.info>

NAME \_\_\_\_\_

ADDRESS \_\_\_\_\_

TOWN \_\_\_\_\_

STATE & ZIP \_\_\_\_\_

GRADE \_\_\_\_\_ AGE \_\_\_\_\_

Winners will be announced in an upcoming January Issue and will receive a \$20.00 Gift Certificate.  
**3 WINNERS** will be chosen from the following age brackets:  
 #1 - Tots to 4 yrs. old.    #2 - 5 to 7 yrs. old.  
 #3 - 8 to 10 yrs. old.  
 Send a photo of yourself with your contest entry, as all winners will be named and shown in the paper announcing the winners in a January, 2019 issue.

# Friends, Fun and Treasure Hunting at the NWADA Chippewa Falls Show & Sale

Article & Photos by Lynn Koszuta

The show started at 9:00am and we got in the doors at 9:30, which was a perfect time to check out our surroundings and get to talk to some of the vendors before the big rush came through the doors.



As usual, I learned A LOT about some of the items we were checking out. We were talking with Nancy Adomeit from The Missing Link about her sign she was displaying, the Anhauser Busch leaded stained glass, it was beautiful and in excellent condition. This was a prototype made in the early 1980's for all the beer signs that you may see in taverns, and stores, a cool piece of history if you ask me.

I absolutely fell in love at the booth of Crock Cabin Stoneware & Antiques, if asked if I could name one thing from their booth I liked the most, I couldn't in all honesty just name one! They had some beautiful items there. The child's size Inlaid Secretary desk was to die for! They also had a fold up high chair that was so gorgeous, and the 1910 Sears Catalog stroller, I could go on and on.

We also spent a lot of time admiring items in J & L Antiques booth, they had a harvest/thrashing table that I so wanted to take home, it had a 3 board top, and it folded up, original paint in red, just fantastic! Oh and the trunk they had there was so awesome too! They also had a pair of children's roller skates, and I was reminis-

ing about how I struggled as a kid to keep them on. LeAnna was telling me about an idea she had of what she was going to do with the skates, I told her I was going to copy her idea, but that will be OUR secret. We had a truck, with us, and I have to tell you, I seriously was thinking, hmmm...could we fit all of this in the truck to go home?



We then walked on and browsed and talked with the vendors, I was having a really good time. Then I saw it! This beautiful dry sink in such good condition, it took my breath away. The color was perfect, the doors were just worn to perfection. We found this at Virginia Wierman's booth, we talked about how you could put this in a bathroom, and mount your faucets above it, put a basin sink in it, and viola!

Circa Antiques had a Steiff Dog, I myself have never seen one of these. I have seen the Steiff Bears, but never a dog, and what I personally liked about it, was the eyes were replaced with buttons, maybe this wasn't the original eyes, but I thought it added a lot of character to it.

We did a lot of talking and walking, and I was parched! Good thing the Goldsmith Café & Coffee Bar was there to help a girl out! This was the 3rd year that I have attended this show, and it didn't disappoint!

For more information regarding the show contact Jerry Fultz 715-617-4310



*The Trail Makers, Rare 16x20 photo taken in 1912 by Roland Reed on the Blackfeet Reservation in Montana, \$1,750. The Missing Link, 763-257-7073*



*Inlaid Secretary desk, \$190. Crock Cabin Stoneware & Antiques, 715-556-0061*



*Antique Flexible Flyer sled, \$60. Crock Cabin Stoneware & Antiques, 715-556-0061*



*Goat, hand carved wood, carved by a deaf mute, goat was logo for the Great Northern railway, \$1,150. The Missing Link, 763-257-7073*



*Holt Howard Onion holder, \$150. Jim & Ellen Tyne, 815-793-6672*



*Native American elk antler & buffalo hide Quirt, \$795. J&L Antiques, 608-249-3796*

*Ceramic Arts Studio Oakie figurine & spring leaf shaker, \$59. Jim & Ellen Tyne, 815-793-6672*



*Red & slag table lamp, \$350. Crock Cabin Stoneware & Antiques, 715-556-0061*



*10 gal. Red Wing bail handle Crock \$125. 20 gal. Red Wing bail handle Crock \$165. Indian Creek Antiques, 262-363-7015*



*Horse feeder & waterer steel pails, \$65 each. Second Chance Antiques, 920-470-2319*

*Pine trunk w/old casters, \$185. J&L Antiques, 608-249-3796*



*American Flyer Train, \$450. Second Chance Antiques, 920-470-2319*



1910 Sears Catalog Stroller, \$175. Crock Cabin Stoneware & Antiques, 715-556-0061



Maple work bench, circa 1920, \$895. Timber Peg Antiques, 608-449-9510



Harvest/Thrashing table, folds up, original paint, 3 board top, \$425. J&L Antiques, 608-249-3796



Winnowing Scoop coffee table, \$195. Timber Peg Antiques, 608-449-9510



Jelly cupboard, \$575. Second Chance Antiques, 920-470-2319



Metal tool box, \$38. J&L Antiques, 608-249-3796



Winscoat Dry sink, galvanized liner, beautiful patina, \$695. Virginia Wierman, 715-720-9092



Printers cabinet, \$950. Timber Peg Antiques, 608-449-9510



Lamps: Blue Cameo Dancing Lady, \$50, Pink Southern Belle 1930's, \$45.



3 gal. Western Crock, \$45. Jim & Ellen Tyne, 815-793-6672



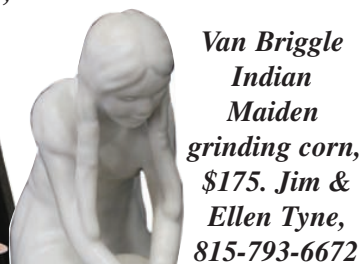
Unique light fixture, \$145. Virginia Wierman, 715-720-9092



Iris glassware, \$10-\$25 a piece. Attic Treasures, 715-675-3738



Vintage mermaids, \$75. Jim & Ellen Tyne, 815-793-6672



Van Briggie Indian Maiden grinding corn, \$175. Jim & Ellen Tyne, 815-793-6672



Cameo, green cake plate \$20, 8 1/2" water pitcher, \$60. Attic Treasures, 715-675-3738



Panelled Holly glass set, Assorted prices. Sandra Ann-Tiques, 715-229-2628



Ceramic mermaids, set of 3, \$315. Times Treasures, 608-617-7066



Northwood Geneva Custard glass table glass, \$237.50. Times Treasures, 608-617-7066





**Pumpkins,**  
big \$300, Med.  
\$175, Sm. \$68  
(two of them).  
Sandra  
Ann-Tiques,  
715-229-2628



**Ewer with Monk  
& Violin, \$85.**  
Sandra  
Ann-Tiques,  
715-229-2628

**Grain scale, \$115. Times  
Treasures, 608-617-7066**



**Ann Barton Sweetheart  
Valentine Hairbrush, comb  
& mirror set, \$100.**  
Black Wolf Antiques,  
920-688-5090



**Crate & Barrel Copper bowls, \$80 & \$100.**  
Black Wolf Antiques, 920-688-5090



**Brass door knocker, \$130.**  
Black Wolf  
Antiques,  
920-688-5090



**SILVERS Mixer,  
Brooklyn 2 pc.,  
\$200. Out  
on the Farm,  
920-294-3068**

**Advertising Rolling pin, \$425. Out on  
the Farm, 920-294-3068**



**Ephraim pottery,  
\$350. Circa Antiques,  
414-651-4676**



**Tractor  
Shed set: \$560  
& Marx  
Deluxe farm set  
complete w/box, \$485. Out on the Farm,  
920-294-3068**



**German  
bathing beauties, \$145 &  
\$165. Victorian House  
Antiques, 715-720-9092**



**Tall  
beauty,  
\$225.  
Victorian  
House  
Antiques,  
715-720-9092**



**Elk Inkwell with quill,  
\$295. Victorian House  
Antiques, 715-720-9092**



**1930 Steiff  
Bully Dog, \$350.  
Circa Antiques,  
414-651-4676**



**Are You Looking For The Perfect Christmas Gift  
for the Antique & Collectible Lover In Your Life?**

*A Gift Subscription To:*

**AUCTION ACTION ANTIQUE NEWS**

**Call Today: 715-524-3076 or visit [www.auctionactionnews.com](http://www.auctionactionnews.com)**





# Auction Action Antique News

Order The Type of Subscription  
That Best Fits Your Needs  
or  
Submit a Classified ad

Don't miss this opportunity to receive a full year of Auction Action Antique News delivered right to your door. Auction Action Antique News brings you the latest Auction ads and articles, Also Antique Shops, Shows, New Mall & Shop Openings, with lots of photos & prices results every week!

Please print clearly and enclose **Payment**, & your Name, Address & Telephone number with ad.

Name \_\_\_\_\_ Tel. Number \_\_\_\_\_  
Address \_\_\_\_\_  
City \_\_\_\_\_ State \_\_\_\_\_ Zip \_\_\_\_\_

An Auction Action Antique News classified ad is only \$10.00 for the first 20 words and 25¢ for each additional word, Please include Name & Address or Telephone Number in ad. Discounts available for repeating ads. Make connections with collectors and dealers throughout the Midwest right here through AAN

**Get Impact From Our Classified Ads!**  
No Auction Ads Will Be Placed In The Classified Section

Type of Ad: Wanted \_\_\_ For Sale \_\_\_  
Run for \_\_\_ Weeks

**TEXT OF AD** • Please be sure to include Address and/or Telephone Number

_____	_____	_____	_____
_____	_____	_____	_____
_____	_____	_____	_____
_____	_____	_____	\$10.00
_____	_____	_____	\$11.25
_____	_____	_____	\$12.50
_____	_____	_____	\$13.75
_____	_____	_____	\$15.00

Mail check or money order to: **Auction Action Antique News, 1404 E Green Bay St. • Shawano, WI 54166 • 715-524-3076 or Fax: 1-800-580-4568**  
E-mail: [auction@auctionactionnews.com](mailto:auction@auctionactionnews.com)  
We Reserve The Right To Reject Any Ad  
Auction Ads will not be accepted in the Classified Section

If you are interested in the Online Edition of The Paper, Please Send Us Your Information by E-mail to: [auction@auctionactionnews.com](mailto:auction@auctionactionnews.com)

- Mailed Subscription for 1 Year (50 issues)
- Online Subscription 1 Year (50 Issues)
- Both Mailed and Online Edition for 1 Year (50 issues)

**PLEASE PRINT**

Name \_\_\_\_\_  
Address \_\_\_\_\_  
City \_\_\_\_\_ State \_\_\_\_\_  
Zip \_\_\_\_\_  
Telephone \_\_\_\_\_  
Email \_\_\_\_\_  
Preferred Password (at least 7 characters) \_\_\_\_\_

\$36.00 Mailed Edition

\$28.00 Online Edition

\$57.00 Both Mailed & Online

Yes, I would like to receive one year of Auction Action Antique News  
Pay by Check, Money Order, Visa and Mastercard Accepted

## Your Next Issue of Auction Action Antique News is Just a Simple Click Away! Our Digital Edition of the Paper can be Downloaded in Seconds at [www.auctionactionnews.com](http://www.auctionactionnews.com)

Can't wait for your subscription to arrive by mail? Take advantage of our Online Subscription and Get your Copy in Just Seconds!  
Download & read from almost any mobile device! iphone, ipad, ipod, Smart Phone, Tablet, PC or Mac!

### CURRENT SUBSCRIPTION OPTIONS & PRICES:

- Mailed Subscription: \$36.00 (50 Issues)
- Online Subscription: \$28.00 (50 Issues)
- Online and Mailed Copy \$57.00 (50 Issues)

**BENEFITS OF THE DIGITAL EDITION:** We Keep the Previous Month's Issues on Our Website for

You! Have access to the paper sooner than you can get it in the mail! The paper is downloadable & searchable by word and you can print it! To Search go to Edit - Find - Enter your word(s) and click Find!

To Sign up for the Digital Edition, just go to our website, click on Subscribe, pick which subscription type you would like, use your Email Address for your user name, enter a password, your contact information, click Submit & you are then able to access the current issue within 24 hours! The new Edition is available every Thursday.



**NO OTHER TRADE PAPER OFFERS THIS UNIQUE SERVICE!**

Give us a call, email us or visit our website to view a Sample Issue.

It is so fast and easy, you won't believe it! You can be reading your next issue in just seconds!

Auction Action Antique News, 1404 E. Green Bay St., Shawano, WI 54166

Office Phone: 715-524-3076 • Fax: 1-800-580-4568

Website: [www.auctionactionnews.com](http://www.auctionactionnews.com) • Email: [auction@auctionactionnews.com](mailto:auction@auctionactionnews.com)



## Auction Action Antique News - Online! Always On Time!

## History - Brown & McCoy Pottery

By Dewayne Imsand

Paul Moody of Richmond, VA made a remarkable discovery of a previously unknown salt glazed crock, labeled, BROWN & McCOY WHOLESALE DEALERS IN STONEWARE ROSEVILLE. O . Just how this piece fit into the known history of the McCoy potteries was intriguing, so an investigation was begun. At first it was thought that the crock was made by a Brown & McCoy Company where the McCoy was unrelated to the McCoy family known to us, but subsequently the following was found.

The Brown in the inscription was James E. Brown who was born in 1820. His father, Joseph Brown who was from Delaware, moved his family in 1837 to McLuney, Ohio. McLuney is located in Perry County in Harrison Township about 11/2miles south of Crooksville.

James E. Brown had married Lucy Ann Sowers before 1850, and moved to Roseville. Throughout their marriage they had seven children, one of which was Sarah E. Brown. There is more about Sarah below. James E. Brown became a well-known merchant, and both he, and later his son George Washington Brown, was quite influential in the Roseville area. Among James' business ventures was a general merchandising store. In the Federal censuses of the late 1800 s, James listed his occupation as a merchant rather than a potter, indicating that he was not involved in making pottery, but rather a wholesale seller of it in his store. It is known from a history of the Brown family, that James employed his son G. W. Brown, and J.B. Owens at the store, and that G.W. went on to establish a pottery around 1850. In 1883, J.B. established the J.B. Owens Pottery Company .

In April 1870, a connection between the Brown family and the McCoy family occurred. The McCoy in this connection was James W. McCoy. J.W. was born in 1848, the same year as his family arrived in Muskingum County. His father, W. Nelson and wife Esther, had settled in Putnam, which later became a part of Zanesville. J.W. was 22 years old in 1870 when he married Sarah (Sade) Elizabeth Brown, the daughter of James E. Brown.

During the following year, J.W. and Sarah moved to Uniontown, Newton Township, Muskingum County, where he operated a dry goods store. In 1872, they moved to the community of Roseville, very near his wife's parents. McCoy references have reported that J.W. opened a general merchandise store in Roseville in 1876, but I was always curious why he, and his wife, moved to Roseville five years earlier, and what J.W. did during that time.

It was discovered that the reason he moved to Roseville was that his father-in-law offered to take him in as a partner in his mercantile business, and their partnership became known as Brown & McCoy . The Brown and McCoy business operated from 1872 until 1888. It is surprising that neither the name James Brown, nor information about the Brown & McCoy business, has appeared in the literature.

After 1888, evidently the Brown & McCoy business was sold; for James E. Brown went on to establish a furniture store on First Street in Roseville - he was 68 years old at the time. He died in 1907 at the age of 88. It is not known when J.W. left the business, but as mentioned above, J.W. opened a general merchandise store in Roseville in 1876. Then in 1886, he entered into a series of partnerships in the pottery business. Finally, in 1899 he, along with several investors, established a pottery in Roseville solely in his own name, the J. W. McCoy Pottery.

For more information, visit the McCoy Pottery Collectors' Society website: [www.mccoypotterycollectorsociety.org](http://www.mccoypotterycollectorsociety.org)

**Advertisers! Give your buyer's more time to plan to attend your auction! We recommend putting your ads in two weeks prior to your sale!**



## The History of the Yule Log

*whychristmas.com*

The custom of burning the Yule Log goes back to, and before, medieval times. It was originally a Nordic tradition. Yule is the name of the old Winter Solstice festivals in Scandinavia and other parts of northern Europe, such as Germany.

The Yule Log was originally an entire tree, that was carefully chosen and brought into the house with great ceremony. The largest end of the log would be placed into the fire hearth while the rest of the tree stuck out into the room! The log would be lit from the remains of the previous year's log which had been carefully stored away and slowly fed into the fire through the Twelve Days of Christmas. It was considered important that the re-lighting process was carried out by someone with clean hands. Nowadays, of course, most people have central heating so it is very difficult to burn a tree!

In Provence (in France), it is traditional that the whole family helps to cut the log down and that a little bit is burnt each night. If any of the log is left after Twelfth Night, it is kept safe in the house until the next Christmas to protect against lightning! In some parts of Holland, this was also done, but the log had to be stored under a bed! In some eastern European countries, the log was cut down on Christmas Eve morning and lit that evening.

In Cornwall (in the UK), the log is called 'The Mock'. The log is dried out and then the bark is taken off it before it comes into the house to be burnt. Also in the UK, barrel makers (or Coopers as barrel makers were traditionally called) gave their customers old logs that they could not use for making barrels for Yule logs. (My surname is Cooper, but I don't make barrels! My Great Grandfather did own a walking stick factory though!)

The custom of the Yule Log spread all over Europe and different kinds of wood are used in different countries. In England, Oak is traditional; in Scotland, it is Birch; while in France, it's Cherry. Also, in France, the log is sprinkled with wine, before it is burnt, so that it smells nice when it is lit.

In Devon and Somerset in the UK, some people have a very large bunch of Ash twigs instead of the log. This comes from a local legend that Joseph, Mary and Jesus were very cold when the shepherds found them on Christmas Night. So the shepherds got some bunches of twigs to burn to keep them warm.

In some parts of Ireland, people have a large candle instead of a log and this is only lit on New Year's Eve and Twelfth Night.

Different chemicals can be sprinkled on the log like wine to make the log burn with different colored flames!

Potassium Nitrate = Violet  
Barium Nitrate = Apple Green  
Borax = Vivid Green  
Copper Sulphate = Blue  
Table Salt = Bright Yellow

This sounds very dangerous, so please only try this out with some adult supervision!!

The ashes of Yule logs were meant to be very good for plants. This is true, because the ash from burnt wood contains a lot of 'potash', which helps plant flowers. But if you throw the ashes out on Christmas day it was supposedly very unlucky!

A Chocolate Yule Log or 'bûche de Noël' is now a popular Christmas desert or pudding. It's traditionally eaten in France and Belgium, where they are known as 'Kerststronk' in Flemish.

They are made of a chocolate sponge roll layered with cream. The outside is covered with chocolate or chocolate icing and decorated to look like a bark-covered log. Some people like to add extra decorations such as marzipan mushrooms!

## ADVERTISERS:

**Please Note: Our Deadline is EVERY Monday at Noon**



**LARGE 2 DAY ADVERTISING AUCTION**  
 Location: 1625 Butts Ave., Tomah, WI. 54660.  
 Inside Heated Building at Monroe County Fairgrounds.  
**DATE: FRIDAY, NOV. 30th & SATURDAY, DEC. 1st, 2018**  
 FRIDAY TIME: EARLY BIRD 8:30 AM - Non Cataloged items  
 SATURDAY TIME: 9:00 AM START  
**WWW.MILLERSAUCTIONCO.COM**  
 SELLING FRIDAY: SIGNS, CLOCKS, THERMOMETERS, TOYS, PEDAL CARS,  
 HOOD ORNAMENTS, OIL CANS & BOTTLES, TINS, PLUS MUCH MORE.  
 SELLING SATURDAY: BEER & SODA SIGNS, CLOCKS & THERMOMETERS,  
 CRATES, KEGS, GLASSES, TRAYS, TAP KNOBS, PLUS MUCH MORE.  
**NO BUYER'S PREMIUM IF YOU ATTEND THE AUCTION IN PERSON. DIFFERENT**  
**TERMS APPLY FOR ONLINE BIDDING.**  
 TERMS: CASH OR CHECK. 3% BUYER'S PREMIUM FOR CREDIT CARD.  
 5.5% SALES TAX.  
 AUCTION CONDUCTED BY MILLERS AUCTION CO. HIXTON, WI.  
 QUESTIONS CALL GLENN MILLER 715 299 2543  
 EMAIL WISCONSINJUNK@YAHOO.COM



[www.WisAuction.com](http://www.WisAuction.com)



## JEFFERSON COUNTY FAIR PARK, JEFFERSON, WI

Between Madison, WI and Milwaukee, WI

6 miles south of I-94. Hwy. 26 to Hwy. 18 east to N. Jackson Ave., left to Fair Park. Indoors & Heated, clean bathrooms, Hot food served for breakfast & lunch. *View our website for more info. and photos*

**TUESDAY ~ DECEMBER 4th, 2018 ~ 9:00 A.M.**

**Antiques, Art & Collectibles**

*Here's an example of what to expect:*

**HUNDREDS OF SMALLS:** Quilts, China, Glassware, Fishing items, Hunting items, Stoneware, Pottery, Dolls, Coins, Clocks, Silver items, Rugs, Paintings, Prints, Frames, Jewelry, Textiles, Needlework, Linen, Primitives, Toys, Religious, All types of memorabilia, Books, Paper goods, Advertising items, Postcards, Photos, Cameras, Lamps, Scrapbooks, Sport memorabilia, Cookie Jars, Indian artifacts, tools, all types of Collectibles.

**LOADS OF FURNITURE:** Cupboards, Dressers, Lamp tables, Dining tables, Chairs, Desks, Buffets, Beds, all kinds of furniture both in as found condition and refinished in every wood from fine furniture to primitives found in the barn.

*Call Greg if you have items to sell.*

*Setup is Monday, December 3rd ~ 3:00 p.m. to 7:00 p.m. & Morning of sale, 7:00 a.m. to starting time.*

**Terms:** Cash, Good check with state photo ID, out of state checks require 1 additional form of ID, Visa, MC, Discover, ATM on site. State photo ID required for bid number, all items sold as is with no returns, 10% buyer fee + 3% convenience fee for credit/debit cards. We are not responsible for accidents, all announcements made at the auction supersede any printed information.

*Presented by: Gregory K. Klug Auctioneer & Appraiser*

Registered Wisconsin Auctioneer #584, PO Box 617, Cambridge, WI 53523  
920-723-4309 [gregklug@wisauktion.com](mailto:gregklug@wisauktion.com)

## Tuetken Estate Auction (Owners of 3 former Pharmacies)

**Location: 116 E. 4th Street, Earlville, IA**

**Date: Saturday, December 1st, 2018 - 9:30 A.M.**

**Back & Front Counters \* Display Cases/Counters \* Antiques \* Cupboards. Go to [harrylahrauctions.com](http://harrylahrauctions.com) Phone: (563)-329-1010**



## LIEBE AUCTION SERVICE

**105 South Pine Street, Weyauwega, WI 54983**

**WEDNESDAYS - DECEMBER 5, 12 & 19 - 2018**

**Inspection at 4:00 P.M. - Auction at 5:00 P.M.**

**NO AUCTIONS December 26, 2018 or January 2, 2019**

**Sporting Auction - Saturday, January 5, 2019 - 8:00 a.m.**

**Items to sell? Call to set up a drop off date ASAP**

**[www.liebeauctionservice.com](http://www.liebeauctionservice.com)**

**Terms:** Cash or check with I.D.

Any information given the day of sale takes precedence over this information.

All Sales final with no warranties or guarantees.



**REGISTERED WISCONSIN AUCTIONEER: STEVE LIEBE #871**

Phone 920-867-3352 Email: [info@liebeauctionservice.com](mailto:info@liebeauctionservice.com)

## ESTATE PUBLIC AUCTION

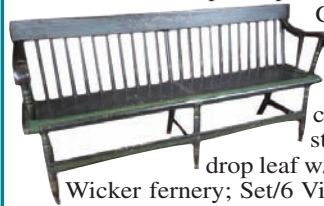
**KEWASKUM, WI**

**SUNDAY, DECEMBER 2, 2018 - 9:00 AM**

**8:00 AM Inspection**

**LOCATION:** Hwys. 45 or 28 to Kewaskum, East on Hwy. 28 to Hwy. "S", then North 1.5 miles to N131. **AUCTIONEER'S NOTE:** The Reuben Schmahl Estate, Jackson with additions.

**FURNITURE:** Super 5' paint decorated Deacon's bench; Very good 6' wood bench; 4' Carpenter's work bench; Nice oak music cabinet; Good blue embossed trunk & others; 5' floor bin; Pine plant bench; Primitive cabinet; "The Prize" cast iron parlor stove; Walnut drop leaf w/3 lvs.; Oak drop leaf w/7 lvs.; Vict. oak parlor tbl.; Iron bed; Wicker fernery; Set/6 Vict. walnut chairs; Chairs & wicker rock-



er; Cedar chest; 30's phone tbl.; Modern china case; Modern sofa; Etc.

**GLASS/CHINA/STONEWARE:** Cranberry bowls; Baccarat golfer; Vict. water set; Set/6 1966 Packers Champion glasses NIB; Swanky swigs; 18 Waterford ornaments; Slag animals; Crystal; "Beast" jard.; Tiffany & Co. rabbit; 6 pcs. Herend porcelain; 80 pcs. Russel Wright Seafoam dinnerware; 50 pcs. Desert Rose; Lg. quantity Blue Willow dinnerware; Lg. mixing bowls; B&G figurines; (6) Hummels; R. Copley pottery; Lemonade set; Teapots; Other high quality glass & china. Red Wing 3 gl. BL crock w/Minn. oval; 3 gl. RW churn w/inverted wing-ski oval; 2 pcs. Grayline; (7) RW sponge bowls & other RW stoneware. **TOYS:** JD farm toys; 30's steel truck; Tonka road grader; Wyandotte, Buddy L & Structo steel toys; Cohn & Marx tin svc. stations; Bizzy Andy trip hammer in box; Wolverine Forward Pass; Lg. Skookoo doll; 21 Barbie & Ken incl. early; Doll tea sets; Child's push sleigh; Doll buggy; Addams Family books; Little Golden books; Lead soldiers; Compo. candy turkeys; Yukon mocs.; Lite-Brite; Many 60's/70's games & toys; Croquet sets; Etc. **THE REST:** Sports Illust. Vol. 1 No. 1; Life Mag. Vol. 1 No. 1; Wm. Tompkins & Son 1867 snare drum; Olds & Son trumpet 13101; Conn trumpet; Magnolia floor phonograph; 5'x6' stained glass church window; 3 drwr. spool cabinet; Plate clock; (2) Ernest C. Ross etchings; Good gilt & enamel green glass lamp, dmg.; MCM pole lamp; Iron floor lamp; Modern iron light fixture; Oil lamps; Lg. sterling fighting roosters; 14k gold & costume jewelry; RR buttons; Conductor cap pin; Sterling ware; New & old Xmas décor & ornaments; Old photos; Good applique quilts; Vermont woven coverlet; 20's dresses; Good needlework; Rag runner; Feather pillows; WWI thru current Army uniforms & gear; Blue Firkin; Iron door stops; Jade fruit; Many cookbooks; Clean Maytag sq. wringer washer; Lightning rod balls; Stihl MS210C chainsaw & hedge trimmer; Enterprise sausage stuffer; Wood bowls; Lg. grindstone; Schnitzelbank; Lithia tray; Local adv.; Enamelware; Counter scale; Old hdwr.; Farm primitives; Elk & deer hides; Much more. **Charbroiled Brats, Hamburgers & Refreshments.**

**TERMS:** Cash or checks. Out of state, two forms of picture ID required. Current D/L required for bid number. **No buyer's fee.** Absentees accepted. No phone or online bidding. 5.5% WI sales tax applies. Registered Wisconsin Auctioneer: Mike Paul #28.

**Appraisals ~ Real Estate ~ On Site or Indoor Sales**

**Paul Auction Company, Inc.**  
P.O. Box 457, Kewaskum, WI 53040  
262-338-3030  
[mike@paulauction.com](mailto:mike@paulauction.com) [www.paulauction.com](http://www.paulauction.com)

**PAUL AUCTION CO. INC.**  
established 1969

**PAUL AUCTION CO. INC.**  
established 1969

**PAUL AUCTION CO. INC.**  
established 1969

**PAUL AUCTION CO. INC.**  
established 1969

**PAUL AUCTION CO. INC.**  
established 1969

**PAUL AUCTION CO. INC.**  
established 1969

**PAUL AUCTION CO. INC.**  
established 1969

**PAUL AUCTION CO. INC.**  
established 1969

**PAUL AUCTION CO. INC.**  
established 1969

## Robert J. Mundt Estate & Donna Mundt

**Saturday, December 1, 2018**

**Sell at 9:30 a.m. - Doors open at 7:30 a.m.**

**Dorshorst Auction Bldg., 113 N. Main St. (Hwy. 73), Deerfield, WI**

See [www.dorshorstauctions.com](http://www.dorshorstauctions.com) for photos & complete list

Rifles, shotguns, pellet pistols, vintage ammo, hunting items (sell about 11:30); 100+ PCS. FENTON & WESTMORELAND GLASS-baskets, vases, shoes, many colors; Playboy magazines & books; many 1960's & '70's gun & ammo magazines; **COLLECTIBLE 16TH SCALE JOHN DEERE TWO CYLINDER EXPO TRACTORS-BOXES, other collectible toy tractors;** fantastic collection of farm related hard cover books; **GOOD, OLD ADVERTISING. VERY PARTIAL LIST-MANY MORE QUALITY ITEMS!!**

**Terms:** Cash or check w/positive picture ID, major credit cards-2.75% fee per swipe. Everything settled for day of sale. 5.5% sales tax. No buyers fee. Everything sold as is, where is. Guns will be registered at Deerfield Pistol Range.

**Marv Dorshorst, Registered Wisconsin Auctioneer #344**  
1078 Nesheim Road, Deerfield, WI 53531 • Phone: 608-628-1631

## ANTIQUE & COLLECTIBLE AUCTION

NAME: Cliff Walstead

**TUESDAY, DECEMBER 4, 2018**

TIME: 9:30 AM • LUNCH: Boondox Buffet

**LOCATION:** Auction to be held indoors at St. John's Gym on Wisconsin Avenue, 116 W. Beech Street, Muscoda, WI.

**COLLECTIBLES:** Many juicers; head vases; Oriental clothes sprinkler; razor back used razor blade holder; Carnival chalkware; Amberina glassware, 50+ pcs. of Carnival glass; crackle glass; Madison Ceramic arts pcs.; many wall pockets; horse & clock (Carnival giveaway); Carnival pitcher, windmill pattern; Hexoptic picture; straw holder; gold plated tea set & silverware; Rogers silver plated silverware-2 patterns, Salesman sample box; silver plated tea set; copper boiler; 2 cut glass; lg. qty. of coin glass; swan powder dishes; pressed back rockers; napkin dolls; 2 pie birds; 2 stereo viewers; antique glass Christmas ornaments; Pez candy dispensers.

**SPORTING:** Duck decoys; antique bullets; Military pins; H&R Arms 32 cal. revolver; U.S. Co. top break revolver; set of golf clubs; toy tricycle; marble game.

**STONEWARE:** Very unusual stoneware water cooler; signed Red Wing quart jug; blue bank RW mixing bowl; 3 gal. salt glaze jug w/bird; yellow bowls; blue band casserole; blue & white Dutch kid's kissing pitcher; blue stone pitcher; several pcs. of Bear Pottery; RW vases.

**SPECIAL ITEMS:** OVER 200 pcs. of Indian arrowheads; Ex. Martin F. Greenwald Collection Highly polished Celt from 1950's-Member of WI Archeological Society; good selection of postcards.

**PRIMITIVES:** Colored enamelware plates; wood advertising boxes; oak telephone; wood spice cabinet; iron ice skates; buggy wheel; oak barrel; corn planter; old hatchets, axes; copper still; apple peeler; candle wick scissors; melon basket; 2-steel yards; ice tongs; picnic basket; harness riveter; corn dryers; milk can; Final cast iron rd. oak stove; glass store jar; unique sausage stuffer lamp; pop crate; fireplace andirons.

**MISC.:** Antique bisque dolls; wood jointed dolls; 2 cases of mid Century phones; iron picture frame; case of "Tums" Richland Center eye glasses; IG Keen Kutter grinder advertising oil cans; RW Tampico dishes; advertising match book collection; kerosene lamps; shovels; rakes; chest freezer; school desk; trunk; chrome table & chairs; many hand tools; many antique reference books.

**TERMS:** Everything to be settled for day of sale. No warranties or guarantees are given or implied.

SALE ARRANGED BY:

**Wilkinson AUCTION CO.**

MUSCODA, WI • 608-739-4404 - [www.warcol.com](http://www.warcol.com) for pictures

REGISTERED WI AUCTIONEERS: Perry Wilkinson #31, Muscoda, WI.

Shane Wilkinson #2938, Muscoda, WI

**EARLY NOTICE: 2 Owner Combined Auction****Location: 116 E. 4th Street, Earlville, IA****Date: Saturday, December 8th, 2018 - 9:30 A.M.**

Over 70 Guns Incl.: Lever Action Winchester & Henry Rifles \* Colt  
Pistols & Many More \* Ammo \* Farm Toys \* Knives \* Toy Trains.  
Go to [harrylahrauctions.com](http://harrylahrauctions.com) \* Phone: (563)-329-1010

**ANTIQUUE AUCTION****SAT., DEC. 1, - 9:30 A.M. (BLIZZARD DATE DEC. 2)****JUDY KNESS ESTATE • MT. CARROLL FARM BUREAU****811 S. CLAY ST., MT. CARROLL, IL**

LOCATED JUST NORTH OF JCT. 64/78, MT. CARROLL

Partial listing, still sorting at press time. Many nice pcs.

Step-back cupboard; dry sink; Library table; 24 drawer cabinet; oak file w/marble top;  
5 leg oak table; numerous spool cabinets; walnut base cupboard; marble top dresser  
w/hand carved pulls; drop-frt. Secretary; commodes; wardrobes; walnut dresser w/hand  
carved pulls; cabinet w/marble top from Chadwick Barber Shop; primitive cabinet; Jak  
Theiler N. Amerika trunk; 6 milcan bar stools; clocks; Andrew Wyeth print; St. Francis  
Ecstasy print; lamps; Reed & Barton sterling silver-14; assorted sterling silver pcs.;  
Victor Talking machine; Van Camp Hardware scale; Potosi wood crate.

TERMS: CASH OR CHECK

MUST HAVE PHOTO ID TO REGISTER

JIM CALHOUN, AUCTIONEER, IL LIC.440000333 MT. CARROLL 815-244-9660  
FOR FULL LISTING & PICTURES [www.calhounauction.com](http://www.calhounauction.com)

**IMPORTANT PREHISTORIC & HISTORIC ESTATES INDIAN RELICS AUCTION****SANGAMON COUNTY FAIRGROUNDS - NEW BERLIN, IL**

12 Miles West of Springfield, IL on I-72

**SATURDAY, DECEMBER 8, 2018 - 9:30 A.M.**

Preview 3-6 P.M., Friday, December 7 and Saturday from 8:00 A.M. sale day.

All Ancient and Historic relics will be offered with a 30-day money back guarantee. Many  
ancient items include a certificate of authenticity from the best authenticators.

From the collection of the late Dale Roberts of Mt. Sterling, Iowa, the life-  
time collection of Harley 'Tex' Wynn of Eastern Illinois, Richard Lienau  
of St. Clair CO., IL, the Tommy Johnson lifetime collection of  
Lafayette, LA, the Dr. Charles West collection of Champaign, IL, the  
late Ardell Arawinko of central Wisconsin. All relics from Wynn,  
Johnson, West, Lienau and Arawinko, collections will sell at absolutely  
no reserve. Outstanding flint relics include a 6 7/8" dovetail, 5  
7/16" Kaolin hardin, large polished point, nice Thebes, Daltons,  
Decatur, bird points, several nice spades including an  
outstanding 16 5/8" L example, 10 5/8" L Pre  
Columbian blade and much more. Slate pendants, banner-  
stones, and expanded center Gorget. Rare Cannel  
Coal Breastplate. Featuring outstanding large slant  
groove and porphyry axes pictured in several publica-  
tions. Large figural Apache, Panamint and Northwest  
coast baskets. Northwest Coast relics include several fine  
Inuit sculptures and stone carvings. Nice selection of ancient,  
historic and contemporary Southwestern pottery by noted  
artists Joseph Lonewolf, Teresita Naranjo and Maria Martinez. Old bead-  
work includes moccasins, pouches, plateau bag, belts and more. Several old Navajo  
rugs including a large old figural example. Nice two Grey Hills and Wide  
Ruins. Ancient pottery includes fine conch shell effigy bowl, hooded and  
bird effigies. Outstanding early Delaware figural pipe and old tomahawk,  
both Ex. Jim Dresslar, figural catlinite horse pipe with quilled stem and  
other catlinite examples. Nice old Indian jewelry. Large meteorites, fine fos-  
sils, Mastadon tusk, Mammoth and sharks teeth, petrified wood, etc. Old  
Blunderbuss flintlock rifle, lots of books, life size bronze tiger, bronze  
horse, large iron wood giraffe sculpture, and much more.

Auctioneer's Note: A large number of relics have been authenticated by Roy Motley, Jerry Dickey,  
Ken Partain, Larry Parkhill, Sam Johnson, Gregory Perino, Maury Meadows, and Tom Davis.

Terms: Cash, Approved Check with Bank Letter of Credit, Mastercard, Visa (with 3.5% fee).

10% BUYER'S PREMIUM. Absentee bids executed competitively. Color catalogue including  
post sale prices realized list available for \$12.00 or \$35.00 annually. Quality Consignments  
Always Welcome. Not Responsible for Accidents.

**RAINBOW TRADERS • 618-372-0248**

Since 1974 - AUCTION SERVICE, ANTIQUES, NATIVE AMERICAN INDIAN ART, REAL ESTATE,

COMPLETE ESTATE DISPERSAL SERVICE • [www.rainbowtradersauction.com](http://www.rainbowtradersauction.com)

Dennis Arbeiter, IL Lic. #440000211, P.O. Box 566, Godfrey, IL 62035

Celebrating 44 years of Respected Auction integrity.

**Huge 2 Day Carnival, Art & Victorian Glass Auction!****Fred & Walter Plautz Collection!****Location: Kramer Auction Gallery,****203 E. Blackhawk Ave., Prairie du Chien, WI****Thursday, Dec. 6th, 10:00 AM - Antique****Furniture, Primitives, Glassware & Tools****Friday, Dec. 7th, 10:00 AM - Higher End****of the Carnival, Art & Victorian Glassware**

Selling the Fabulous lifetime collection of Fred & Walter Palutz. These  
Brothers collected the best Carnival & Victorian Glassware for 50+ years.  
Plus Antique Furniture, Hull & Watts Pottery, Red Wing & Western  
Stoneware & other great related items.

Huge Selection of rare Carnival glass in Blue, Red, Amethyst, Aqua Marine  
& White. Patterns include Dragon & Lotus, Butterfly, Grape & Cable,  
Peacock at Fountain, Town Pump, Panther, Apple, Orange Tree, Lion,  
Thistle & More! Plus Murano Glass Figurines, Red Mark RS Prussia,  
Advertising Custard glass, Art glass rose bowls, Japanese Orientale, Portrait  
Vases & so much more. Check website for pictures & additional listing!

**Terms:** Valid Photo I.D. to Register, 10% Buyer's Fee & 5.5% State Sales  
Tax applies. Cash, Check & Credit Cards accepted. This is an in-house only  
auction, No Online bidding, make plans to attend!



Clerk &amp; Cashier:

**Kramer Auction Service, LLC**

203 E. Blackhawk Ave., Prairie du Chien, WI

608-326-8108 [www.kramersales.com](http://www.kramersales.com)

REGISTERED WISCONSIN AUCTIONEERS:

John Kramer #320 and Curt Kramer #896

**Holiday****Deadline**

Our last issue of the year will be  
mailed on Wednesday, Dec. 5th -

All ads should be in by

Monday, Dec. 3rd at Noon

Our next paper will be mailed on Dec.

26th. All ads should be in by

Monday Dec. 17th at Noon.

We then return to our normal  
schedule with Deadline on Dec. 31st -  
mailed on Jan. 2nd

**When out & about, let our advertisers  
know where you saw their ad!**

# A Brief History of the Cambridge Glass Company

by Mark Nye

The Cambridge Glass Company came into being for two main reasons: the desire of the citizens of Cambridge, Ohio, to secure a new industry for their city and the desire of a location for a new glass plant being planned for by the National Glass Company, based in Pittsburgh, Factory Postcard Pennsylvania. The site would have to be near sources of natural gas and coal, both of which Cambridge had. The citizens of Cambridge were represented by the Cambridge Improvement Company. In 1901, the two parties came to an agreement. The citizens of Cambridge would provide the site and National Glass Company would build the factory which it would own.

To open the factory, a new company, The Cambridge Glass Company was incorporated by five individuals. Three men associated with National: Myron Case, Andrew Heron, Addison Thompson; and two local individuals: Fred Rosemond and Casey Norris.

After construction began, National went looking for an individual to run the plant and head the newly formed Cambridge Glass Co. They selected Arthur J. Bennett, a native of England but a long time resident of the United States. Mr. Bennett's background was in the field of importation and retailing of European china and glassware and was well known in the New York and Boston areas.

Construction of the plant was completed in early 1902 and in May of that year the first piece of glass, a pitcher, was produced. During the first years the ware produced by the Cambridge Glass Co. came from molds previously used by other glass companies and was typical of the glassware of the period: table sets, jugs, bowls, molasses jugs, jars, tumblers and lamps.

It was not until 1904 that the first original Cambridge line, Radium, was designed and produced. The year 1904 also saw the introduction of the first Cambridge trademark: NEARCUT. Pressed into the glass, it was also used as two words, one above the other.

From the very beginning, the Cambridge Glass Co. was an independent company that leased its facilities from the National Glass Co. Indications are that by 1906 Mr. Bennett was the principal stockholder and hence the owner of the Cambridge Glass Co, but still did not own the physical plant.

1907 saw the financial collapse of the National Glass Company but this had no effect on the operations of the Cambridge Glass Co. and facility lease payments continued to be paid to National and its receivers. After three years of legal and financial proceeding that dissolved the National Glass Co., the Cambridge Glass Company was able to purchase the buildings in which it was operating. Now, eight years after it made its first piece of glass, Cambridge Glass Company was a completely independent company whose principal stockholder was Arthur J. Bennett. The company prospered under his ownership and around 1910 acquired the rights to the idle factory of the former Byesville Glass and Lamp Co. and expanded its operations into that plant, located a few miles south of Cambridge.

Through the early years the company operated its own coal mines and consumed many tons daily producing raw gas to fire its melting pots. In addition to the gas it produced, the factory used natural gas from its own wells and also bought gas from other well owners.

By 1920, the trend was away from the heavy pressed and imitation cut glass and toward lighter pressed and blown ware. Also by this time several etchings had entered the Cambridge line, among them Marjorie, Triangle C named after Mr. Bennett's daughter. The early 1920s saw all operations stopped at the Byesville plant with all work now being done at the main plant in Cambridge. At the beginning of

1922, a new trade mark, the now familiar letter C enclosed in a triangle, was introduced. During the early to middle 1920s a variety of opaque colors were brought into the Cambridge line, most being produced for only one to three years. Later in the 1920s transparent colors became very popular, replacing the opaques. Complete dinnerware lines, plain and etched, were being sold as was a large selection of decorative and accessory items. The company continued to produce a complete line of pharmaceutical items, a line that was continued until 1954 when the original company ceased operations.

The 1930s were prolific years. Colors such as Carmen, Royal Blue, Crown Tuscan, Heatherbloom and Forest Green were developed and brought Cambridge Factory to market. New dinnerware lines and numerous new etchings including Rose Point, became part of the Cambridge line. All this took place in spite of the effects the Great Depression had on company operations.

During its peak years, Cambridge had as many as 700 employees working three shifts with all three furnaces running at full blast. Mr. Bennett continued as company president; his son-in-law, Wilber L. Orme, was vice-president; William C. McCartney was corporate secretary and sales manager; G. Roy Boyd was treasurer and J. C. Kelly kept the plant running as factory superintendent. In July 1939, Mr. Bennett sold his controlling interest in the company to his son-in-law, Wilber L. Orme. Mr. Bennett continued as company president until his death in February 1940.

Mr. Orme continued to develop new lines and colors. In 1950, Cambridge's Square Pattern won top honors across the United States for its modern design. Soon, however, the demand for fine handmade glassware began to decrease and at the same time, competition from foreign and machine-made glass began taking its toll. In 1954, Mr. Orme decided to close the plant, ending one of the best and most prosperous glass companies the world has ever known.

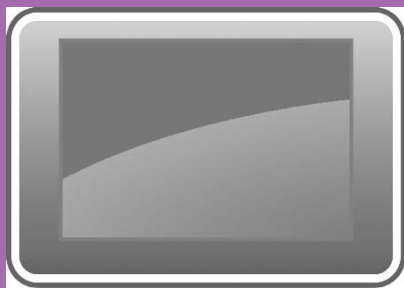
Shortly after it ceased operations, the company was sold to a firm headed by Sidney Albert of Akron, Ohio. The plant reopened in March 1955. Sales were poor and in 1956 Morrison Industries Inc., of Cleveland, Ohio, acquired possession. Sales continued to be slow and management problems grew. The company closed its doors for the final time at the end of 1958. In November 1960, Imperial Glass Co. of Bellaire, Ohio, acquired the remaining assets, exclusive of the physical plant. Included in the sale to Imperial was all remaining stock, molds, etching plates and portable equipment. For a time in the 1960s, Imperial did produce Cambridge by Imperial but sales were not what was expected and the lines were discontinued.

1984 saw Imperial forced into bankruptcy and eventual liquidation of all its assets. At that time National Cambridge Collectors purchased a number of the remaining significant molds, all of the etching plates, except those for Rose Point, and other Cambridge related equipment. Glass companies such as Fenton Art Glass and the now defunct Summit Art Glass also acquired Cambridge molds.

Prior to use, Fenton altered the molds they purchased thus causing no major problems for collectors. Summit Art Glass did not and a wide array of reproductions entered the market place. Many of the pieces produced by Summit were in colors never used by Cambridge. However, some were and a few continue to cause confusion for Cambridge collectors. The Rose Point etching plates were never used and were subsequently acquired by NCC, Inc.

In 2006 NCC Inc. was able to acquire all the Cambridge molds owned by Summit Art Glass. A few insignificant Cambridge molds remain in private hands but these offer no significant problems for today's collectors. The Cambridge molds that still remained following the Imperial liquidation were sold for scrap iron.

The Cambridge Glass Co. factory buildings met their demise in 1989 when the owner decided they had deteriorated beyond repair and were hazardous. All that remains today is a weed-filled field, a sad sight to see if you were fortunate enough to have seen the factory with its many artisans and laborers busy at their trade. for sale in the gift shop, along with books and other items throughout the museum.



Be Sure To Check Out Our WEEKLY FEATURED  
AUCTION ADS ON THE HOME PAGE OF OUR WEBSITE  
[www.auctionactionnews.com](http://www.auctionactionnews.com)

# 13" Dance Sword Brings \$13,250 at Rainbow Traders Auction

Article & Photos by Rainbow Traders

The outstanding collection of Thomas Wyatt of Eastern Kansas, the lifetime collections of Tommy Johnson of Lafayette, LA, Don & Diane Leahart of St. Louis, MO, Ardell Arawinko of Central Wisconsin, Wm. David Wood of Eastern Illinois and a large selection from the Randy Hudson collection of Lincoln Co. Missouri.

Tom Wyatt, as a frequent exhibitor at relic shows throughout the Midwest, won numerous awards for his conscientiously assembled collection focusing on Western corner tangs and Paleo points. Having hunted relics since childhood in Henderson, KY, Tom continued to search throughout his life in east central Kansas and especially after his retirement from civil service & the Kansas Army National Guard. Tom was founder and first President of the Kansas Archaeological Society, published several articles in various archaeological journals, and appears in "Who's Who" #9 and #10.

Growing up in Bibb Co., Alabama, Charlie West can't remember a time in which he did not hunt Indian relics. Born in June 1936, he served in the Army Signal Corps as a US Army Captain in Alabama in the early 1960's. Charlie taught educational Psychology in Tennessee and 32 years at the University of Illinois. In his career he published 4 books and over 60 articles. He published several articles and has had relics pictured in "Central States Archaeological Journal" and "Prehistoric American". As an avid field hunter he discovered over 30 sites in Tennessee, Alabama and Illinois.

The late William David Wood grew up in Clay Co., Illinois. He hunted relics from the time he was a child and throughout his life in Illinois, Georgia and South Carolina.

Thomas "Tommy" Johnson grew up in the small town of Lafayette, Louisiana, where he was constantly searching the fields for relics with his brother, Paxton, from an early age. He documented several sites in Louisiana and as an adult helped co-found and serve as President of the Louisiana State Archeological Society. He also was instrumental in preserving the well known Poverty Point Site. Having raised five fine children and during and after a successful career as a petroleum engineer, his passion for collecting sent him to achieve a degree in archaeology from the University of Louisiana at Lafayette. He was well known as a sponsor for Indian guides and seminars for groups of grade school student and in establishing the Southwest Louisiana Youth Sports Association. The result of Tommy's respect and love of Native American culture has resulted in his impressive seventy years assemblage.

Having now retired from the medical profession in St. Louis, MO, Don and Diane Leahart decided to share their carefully assembled lifetime collection. Don has stated that it was always his intention to enjoy these items, then return them to the collecting community at retirement. The Leahart assemblage ranged widely from local Missouri ancient arrowheads and axes, through Pre Columbian, ancient and Southwestern contemporary pottery and fine historic baskets.

Rainbow Traders are located in Godfrey, Illinois. We can be reached at 618-372-0248 and be sure to visit our website at: [rainbowtradersauction.com](http://rainbowtradersauction.com).



3 5/8" L x 1 3/16" W Agate Basin, colorful Foraker chert, \$600.



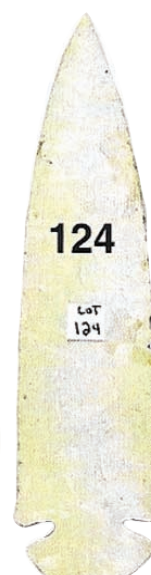
Knife River Clovis, very heavily patinated, \$2,200.



Folsom, high grade Niobrara chert, outstanding workmanship, \$1,150.



Flared bit notched Hoe, Mill Creek chert, minor use nicks, \$3,100.



St. Charles Dovetail, glossy Burlington, \$1,750.



Navajo Turquoise & silver bracelet, signed by Allison Lee, \$550.



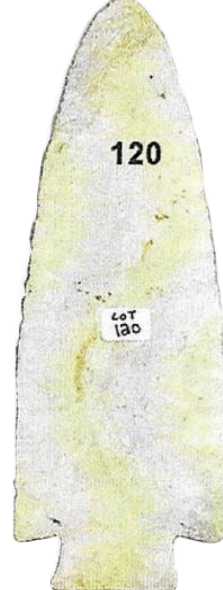
Navajo silver & coral heavily built bracelet signed by Allison Lee, \$350.



Lost Lake, Dickson Co., TN. Dover, outstanding workmanship. Pictured in Prehistoric American vol. 1996. \$2,900.



Adena point, thin Burlington, \$1,300.



Hardin, Glossy tan & gray Burlington, first or early stage, \$2,250.



Dalton knife, glossy Burlington, outstanding parallel flaking, \$1,500.



Mozarkite Hardin, ancient use polish, fine thin workmanship, \$1,800.



Plainview knife, thin Crowley's Ridge, parallel flaking, \$800.



Dovetail, tan Burlington, narrow notches, nice workmanship, \$525.



Agate Basin, Glossy cream & gray Burlington, multiple small fossils, \$500.

Ancient Copper flared bit Adz, heavily patinated, possibly Michigan. \$475.

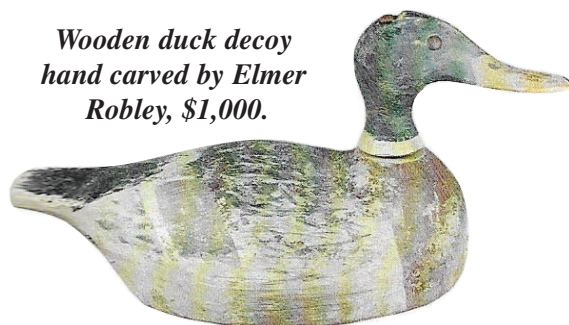




*Discoidal, colorful orange and dark speckled granite, sold for a strong \$2,600.*



*Handmade short sword, wooden handle, possibly a Civil War relic, \$525.*



*Wooden duck decoy hand carved by Elmer Robley, \$1,000.*



126

LOT 126



*Two Navajo turquoise and silver bracelets signed by Allison Lee, heavily built. \$425.*

*Hardin, Glossy cream & gray Burlington, \$525.*



*Porphyry Celt from Eastern Illinois and a Catlinite Pipe Stem or bowl, high polish, \$375.*



*Navajo Turquoise & silver heavily built bracelet signed by Allison Lee, \$425.*



*Turquoise & silver Navajo 5 stone row bracelet by artist Allison Lee, \$725.*



*Stone bowl from California, shows heavy ancient use, heavily patinated, \$450.*

## The American Bar Lip Decanter- Form and Function

*By Bill Morrison*

The cultural history of material objects can reflect events and industrial processes in unexpected and interesting ways. They were often created to cater to specific social trends or phenomena, became part of the fabric of everyday life, but then disappeared almost as quickly as they appeared, to be replaced in turn by improved versions and styles.

The bar lip decanter is one such object, and its history offers a fascinating glimpse of the social and economic development of America's first 100 years, as well as the evolution of glass manufacturing in this country. It appears that the bar lip decanter was an exclusively American form. While catalog illustrations confirm that they were manufactured elsewhere, foreign-made examples appear to have been specifically made for export to the US, as bar lip decanters do not appear to have been used elsewhere in the world.

The 1830s witnessed radical changes in the interior design of bars and saloons. The traditional layout had placed the keeper "behind bars," in a caged area with an opening to the taproom, to protect him and his inventory from unruly customers. However, as bars became more open, the ironwork disappeared and shelves were fitted to a wall behind the tender's back for displaying his range of liquors.

Bars and saloons continued to store large quantities of liquor in barrels, but a means was required to house liquor at the counter in a manner that helped project a suitably refined image. Pottery stoneware jugs were old fashioned and suffered practical disadvantages.

By 1845 new-style city bars had begun to resemble their modern descendants, fitted with elegant trappings and comfortable furniture, intended to attract more discerning customers than old-fashioned saloons.

Newspapers began to describe some as "drinking palaces," with long rows of decanters behind the bar. On the other hand, sleazy bars and saloons were referred to

as "barrel shops" because they still poured directly from barrels, not decanters.

With most liquor during the period remaining colorless, sophisticated establishments would have required decanters of differing shapes, sizes and designs to assist the bar tender in identifying specific brands. Blown molded and engraved bar lip decanters first appeared between 1830-1840 to meet this specific need.

By the late 1850s the blown decanters were being replaced by pressed versions in numerous patterns and sizes.

The bar lip decanter enjoyed a heyday spanning just 45 years, between circa 1830-75, during which decanters in countless patterns, shapes and sizes, were being manufactured by dozens of American glass houses. Two factors, one technical, one sociological, combined to cause its ultimate demise.

The first technological advance was the development of lime-based glass, which was around sixty-percent cheaper to produce than lead-based equivalents. The increased workability of lime glass allowed more efficient manufacturing methods and encouraged the introduction of cheap, labeled bottles.

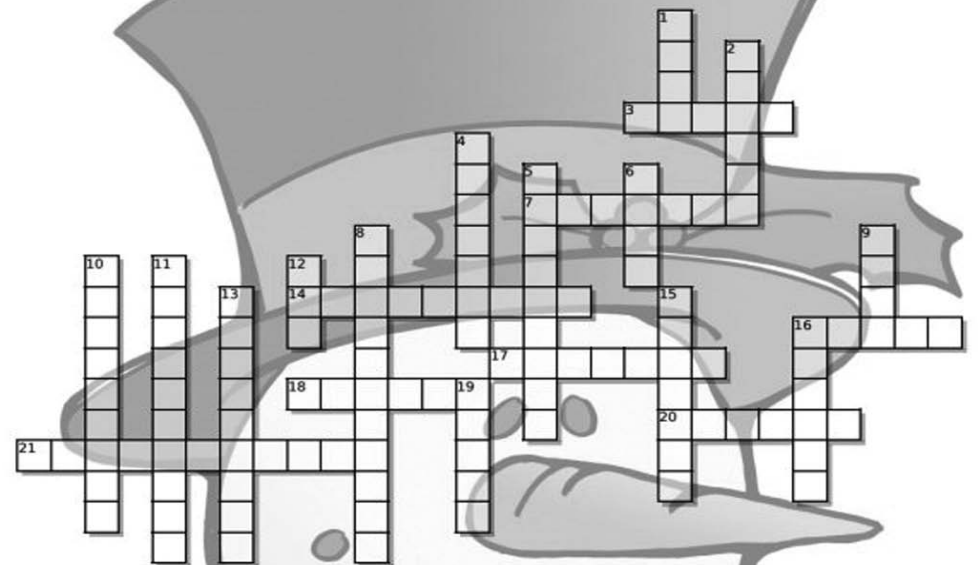
The associated cultural change was rapid "nationalization" of American drinking preferences. Soldiers who had traveled the country during the Civil War returned home having newly acquired tastes for particular brands that had previously been unknown in their hometown or state. The smoother and more flavorful liquors developed by some distillers, notably in the south and east, proved particularly popular. Early Times (1860) and Jack Daniels (1866) are only two of several brands established at the time of the civil war and reconstruction. Bar owners were quick to recognize the commercial potential that "added value" brands brought to their business, and the explosive expansion of the railroads provided the routes of national distribution.

Advances in bottle-making technology encouraged the manufacture and the distribution of new "branded bottles" embossed with the type of the liquor, or branded and decorated with logos identified with specific brands. The first "bar bottles" appeared in the McKee catalog of 1871, and within four years bar lip decanters had all but disappeared from glass catalogs.

Bitters-sized decanters survived longer as they were adapted for use as sauce bottles, with examples illustrated in catalogs into the early part of the 20th century.



### Merry Christmas Crossword



ACROSS

- 3 Santa's helpers
- 7 the red nosed reindeer
- 14 things hung on the Christmas tree
- 16 people send Christmas
- 17 are you \_\_\_ or nice? \_\_\_
- 18 Santa's vehicle
- 20 creamy Christmas drink
- 21 Brings presents on Christmas

DOWN

- 2 decoration for the front door
- 4 baked sweets
- 5 traditional Christmas dessert
- 6 on kids' wish lists
- 8 popular Christmas song
- 9 goes at the top of the tree or in the night sky
- 10 hung by the chimney with care
- 11 striped peppermint hooks
- 12 goes on top of a present
- 13 falls from the sky in the winter
- 15 gloves without fingers
- 16 Christmas songs
- 19 prickly green plant used to decorate

**WORD BANK:** WREATH, TOYS, STOCKINGS, STAR, SNOWFLAKE, SLEIGH, SANTACLAUSE, RUDOLPH, ORNAMENTS, NAUGHTY, MITTENS, JINGLEBELLS, HOLLY, FRUITCAKE, ELVES, EGGNOG, COOKIES, COAL, CAROLS, CARDS, CANDYCANES, BOW

# MERRY CHRISTMAS!

# MAD LIBS

*Dear Santa,*

I HAVE BEEN A VERY \_\_\_\_\_ THIS YEAR! I ALWAYS HELP MY  
ADJECTIVE NOUN

\_\_\_\_\_ WITH CHORES AROUND THE \_\_\_\_\_ - IT'S MY JOB TO  
RELATIVE NOUN

\_\_\_\_\_ THE \_\_\_\_\_ AND TAKE OUT THE \_\_\_\_\_ EVERY DAY.  
VERB NOUN NOUN

I REALLY HOPE THAT I AM ON THE \_\_\_\_\_ LIST THIS YEAR! I HAVE DONE A LOT  
ADJECTIVE

OF \_\_\_\_\_ THINGS, SO I THINK THAT I DESERVE IT! I EVEN HELPED  
ADJECTIVE

\_\_\_\_\_ FEED THEIR \_\_\_\_\_ WHILE THEY WERE ON VACATION IN  
PERSON ANIMAL

\_\_\_\_\_!  
LOCATION

I HAVE A FEW \_\_\_\_\_ WISHES THIS YEAR, AND I WOULD LOVE  
ADJECTIVE HOLIDAY

TO SEE A \_\_\_\_\_ NEW \_\_\_\_\_ UNDERNEATH THE TREE WITH MY NAME  
ADJECTIVE NOUN

ON IT! IT WOULD MAKE ME THE HAPPIEST \_\_\_\_\_ ON THE \_\_\_\_\_!  
NOUN NOUN

OH, AND IF YOU COULD PUT A \_\_\_\_\_ INSIDE OF MY STOCKING,  
ADJECTIVE NOUN

THAT WOULD BE \_\_\_\_\_ TOO! MERRY \_\_\_\_\_!  
ADJECTIVE HOLIDAY

© 2017 Happiness is Homemade (www.happinessishomemade.com) FOR PERSONAL USE ONLY

# Holiday Tunes

- Away in a Manger
- Choir of the Bells
- Dominick the Donkey
- Frosty the Snowman
- Holly Jolly Christmas
- Jingle Bell Rock
- Jingle Bells
- Let it Snow
- Little Drummer Boy
- Little St Nick
- O Holy Night
- Rudolph
- Santa Baby
- Silent Nigh
- Silver Bells
- The Christmas Song
- The First Noel
- Winter Wonderland



S G R D A M A F C I F Z Z X F K U H J X  
 W A W A Y O B R E M M U R D E L T T I L  
 C K M B H P L O D U R J T G J I H Z N O  
 Z D W T Z E D S Y E L C B Y R T G C G K  
 G N O S S A M T S I R H C E H T I J L L  
 Q A N K O I D Y A L F D G I R L N B E D  
 X L S O X Q R T B T I N W X N E T O B J  
 D R T J T I R H V A A H X I P S N A E W  
 F E I F W V T E C M B E U U B T E S L S  
 N D T U C C H S A Y A A I N S N L C L Q  
 B N E V X E G N X I L M T R I I I Y R W  
 F O L N I A I O Z T K L I N X C S J O U  
 B W V E S Y N W K M G F O O A K T E C N  
 G R O K A C Y M V Z E U A J Y S L D K U  
 M E Q W Q O L A O H K P I T Y K B N M Q  
 G T A P U I O N T S L L E B E L G N I J  
 L N F G C Z H N S L L E B R E V L I S E  
 I I Y E K N O D E H T K C I N I M O D S  
 L W B T K S L L E B E H T F O R I O H C  
 U I M U Y F C J H B X B V R U M Q C Y B

Chicken Scratch NY

# UPCOMING EVENTS

## 62nd Annual Holiday ANTIQUÉ SHOW & SALE

Friday, November 16 ~ 10-7pm  
Saturday, November 17 ~ 10-4pm

Rock Garden Banquet &  
Conference Center  
1951 Bond St., Green Bay, WI

Green Bay-DePere Antiquarian Society  
antiquariansocietygbdp.org

## CHICAGOLAND SHOW

Antique Advertising, Slot Machine & Jukebox  
Friday, Nov. 16, 7:00-5 Dealer Preview \$50  
Friday Admission Good For All 3 Days One Admission Covers Both Exhibition Halls

Saturday, Nov. 17, 9:30-3 Admission \$7  
Sunday, Nov. 18, 9:00-2:30 Admission \$7

Lake County Fairgrounds Event Center  
1060 E Peterson Rd  
GRAYSLAKE, IL

For Dealer Info: Bob Traynoff ~ 847-244-9263  
For Show Info: Kevin Greco ~ 815-353-1593  
Visit Our Website: [www.chicagolandshow.com](http://www.chicagolandshow.com)

## Chicago Pop Culture Show & Sale

NOVEMBER 24 & 25, 2018

Chicago Pop Culture Con is a multi-genre convention of  
Comics, Toys, Gaming, SCI-FI, Stars, Sports Cards,  
Autographs, Super Heroes, Action Figures, Collectibles,  
Sports Memorabilia, Non Sports Cards, Posters,  
Vintage Music Memorabilia, TV/MOVIE MEMORABILIA,  
— but open to anything fan-related!

**New Vendors Welcome!**

**PHEASANT RUN MEGA CENTER**  
4051 E Main St, St. Charles, IL 60174

715-526-9769 • [facebook.com/chicagopopculturecon](https://facebook.com/chicagopopculturecon)  
[www.ChicagoPopCultureCon.com](http://www.ChicagoPopCultureCon.com)

## Kane County Flea Market "Best in the Midwest or Anywhere"

Antiques & Collectibles  
KANE COUNTY FAIRGROUNDS  
525 S. Randall Rd. (between Rt. 38 & 64),  
St. Charles, Illinois

**December 1st & 2nd**

- Saturday Noon to 5 P.M.
- Sunday 7 A.M. to 4 P.M.

Adm. \$5 each day (Children under 12 free)  
Food Served All Day.

Parking Free • We Never Cancel

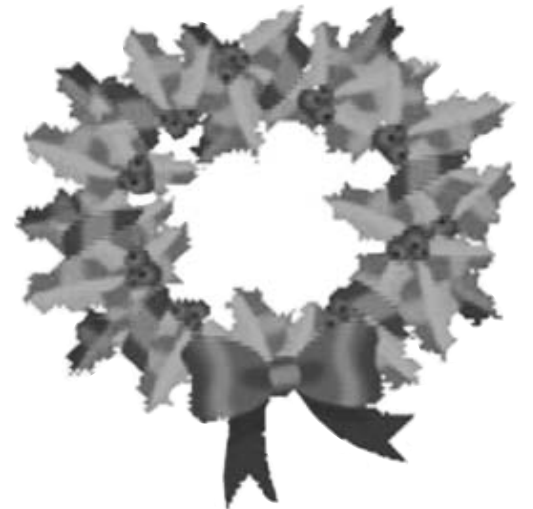
(KCF Market Inc.) 630-377-2252  
[www.kanecountyfleamarket.com](http://www.kanecountyfleamarket.com)

Are You Looking For The Perfect Christmas Gift for the  
Antique & Collectible Lover In Your Life?

*A Gift Subscription To:*

**AUCTION ACTION ANTIQUE NEWS**

Call Today: **715-524-3076** or visit  
[www.auctionactionnews.com](http://www.auctionactionnews.com)



## Christmas Deadline Reminder!

Our last issue for this year will be dated  
**Tuesday, December 11th**

and will be mailed on

**Wednesday, December 5th**

All Ads Should Be In By

**Monday, December 3rd**

So, if you have an event you need advertised between  
Dec. 12th and Dec. 31st, you will need to have your ad in by **Monday, Dec. 3rd.**



## NOTE!

*We will not have a paper for  
two weeks during the Holiday Season.*

**Our Last Paper of the Year is  
Mailed on December 5th and the**

**First Paper of the New Year is Mailed on December 26th.**



# UPCOMING EVENTS

Our Famous Annual Holiday Tinley Park Toy Show is not to be Missed!

## TINLEY PARK TOY SHOW

SUNDAY, DECEMBER 2, 2018

10 a.m. to 2 p.m.

Tinley Park High School

6111 W 175th St. • Tinley Park, Illinois

Admission \$6.00 Kids 6-12 \$2.00

Preview admission 7:30 a.m. \$20.00

From Antique to New

There's A Toy Here For You!

For additional information or table availability call

Jim Welytok 262-366-1314

Visit our Web Site: [www.uniqueeventsshows.com](http://www.uniqueeventsshows.com)

## ROCHESTER, MN MAYO CIVIC CENTER FLEA MARKET

**December 9**

Sunday 10-4

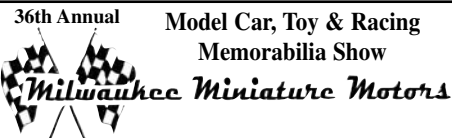
MAYO CIVIC CENTER

30 Civic Center Dr

Dealers can drive in to unload & to load out!

Townsend Promotions

641-832-2700 507-269-1473



December 16th 10AM - 2PM

Waukesha County Exposition Center

Forum Building, 1000 Northview Rd.

WAUKESHA, WI

Adm: \$5.00 • 12 & under FREE with Adult

Show & Vendor Information:

[www.uniqueeventsshows.com](http://www.uniqueeventsshows.com)

262-366-1314

## ZURKO'S MIDWEST PROMOTIONS 2018 Show Schedule

### DECEMBER

December 8 & 9 (Sat. & Sun.) Antique Market; Lake County Fairgrounds; Grayslake, IL

December 16 (4th Sunday) Antique Flea Market; DuPage County Fairgrounds; Wheaton, IL

Info: 715-526-9769

[www.zurkopromotions.com](http://www.zurkopromotions.com)

Email: [zurko@frontiernet.net](mailto:zurko@frontiernet.net)

# New Year Deadline Reminder!



If you have any questions about these deadlines, please give us a call at: **715-524-3076**

The first issue for the new year will be dated **Tuesday, January 1st** and will be mailed on **Wednesday, December 26th**, **Deadline is Monday, December 17th.**

# 2019 UPCOMING EVENTS 2019

**JANUARY**  
12 & 13  
Sat. 10-5  
Sun. 10-3

Minnesota State Fairgrounds  
1265 N. Snelling Avenue  
St. Paul, Minnesota

Booth Rental Information:  
651-771-3476 • 612-961-3401  
[www.mnantiqueshows.com](http://www.mnantiqueshows.com)

2019 SHOW DATES:  
April 13 & 14 • September 28 & 29



West Bend Antique, Artisan,  
Fine Arts Show & Sale

**JANUARY 18-19, 2019**

West Bend, Wisconsin

Washington County Fairgrounds

Hwy. 45 & Pleasant Valley Rd.

(30 min. North of Milwaukee, WI)

Friday 11-7 • Saturday 9-4

Admission: \$5 • FREE PARKING

40 Exceptional Vendors

Join in our Free Scavenger Hunt - A Big Hit!

[www.WestBendAntiqueShow.com](http://www.WestBendAntiqueShow.com)

920-475-6508

Dealer Inquiries Are Always Welcome...

## The Great Milwaukee Classic Antique & Collectible Fishing Tackle Show

Friday, January 18 10:00-3:00

Saturday, January 19 9:00-Noon

Sheraton Milwaukee Brookfield

375 S. Mooreland Road

Brookfield, Wisconsin

For More Info: Chris Sulsar 262-960-2230

## ROCHESTER, MN MAYO CIVIC CENTER FLEA MARKET

**January 27, 2019**

Sunday 10-4

MAYO CIVIC CENTER

30 Civic Center Dr

Dealers can drive in to unload & to load out!

Townsend Promotions

641-832-2700 507-269-1473

45th Winter Wisconsin Antiques Dealers Association

## Antiques Show & Sale

**FEBRUARY 1 & 2 2019**

Fri, 10-8 • Sat, 10-5

Waukesha County Expo Center

Waukesha, Wisconsin 53188

1-94 (exit #294, Hwy J), South 1 mile to

1000 Northview Rd. Follow signs West to Show

Over 56+ Quality Dealers from 6 states

Proceeds from show benefit: Grants for historic preservation  
within Wisconsin; Waukesha County, WI college scholarships;  
& Friends of Wisconsin Historical Society.

FREE PARKING • GOOD FOOD • ATM on premises

414-510-4441

\$7.00 Good for both days

[www.WisconsinAntiquesDealers.com](http://www.WisconsinAntiquesDealers.com)

[www.antiquesportingandadvertisingshow.com](http://www.antiquesportingandadvertisingshow.com)

## Sporting & Advertising ANTIQUESHOW

**FEBRUARY 1st & 2nd**

Oshkosh, Wisconsin

Sunnyview Expo Center

FRIDAY ~ 10 a.m. - 6 p.m.

SATURDAY ~ 9 a.m. - 3 p.m.

Show Information: 906-250-1618

Vendors Wanted

## Wausau Antique Show & Sale

DC Everest High School  
2305 Jelinek Ave, Schofield, WI  
4 miles South of Wausau, WI

Feb. 9-10

Sat. 9-5 • Sun. 10-4

50+ Great Booths

1000's of Antiques & Vintage Finds  
+ a Glass, China, Clock Repairer

From the No., So., W.: Hwy 39/51,

Exit 185, No. to Jelinek, turn E. 1/2 mi.,

From the E.: Hwy 29 W. Exit 171,

go N. 1/2 mi to Jelinek

\$5.00  
Good  
For  
Both Days

34th  
Year

Free Parking

Info: AR Promotions • 715-355-5144

[www.antiqueshowsinwis.com](http://www.antiqueshowsinwis.com)



**FEBRUARY 14th -16th**  
Collinsville, Illinois

Doubletree Hotel & Conference Center  
1000 Eastport Plaza Drive

Room Vending Thursday & Friday till 10pm

FRIDAY ~ 9 a.m. - 6 p.m.

SATURDAY ~ 9 a.m. - 1 p.m.

Show Information: 906-250-1618 or

email: [admin@gatewaygas.com](mailto:admin@gatewaygas.com)

[gatewaygas.com](http://gatewaygas.com)

Vendors Wanted

# THE ACTION CLASSIFIEDS

## WANTED

**MOVIE POSTERS WANTED:** 1-Sheets, 3-Sheets, lobby cards, displays, banners, glass slides. Dwight Cleveland, PO Box 10922, Chicago, IL 60610-0922. 773-525-9152 or Fax 773-525-2969. E-mail: posterboss@aol.com

**VINTAGE TITLES** Buying and Selling Auto, Motorcycle, Truck, Tractor titles. Ralph, PO Box 540, Mukwonago, WI 53149 or email: ralph@greenfieldgallery.net or call 262-363-5885

**BOY SCOUT ITEMS WANTED:** Patches, Uniforms, Shoes, Camping Gear, Advertising/Store Displays, Jamboree Items, Collections, Wisconsin Oriented Troop Items Etc. Call Patrick at 715-252-2100

## WANTED

**MOP BUTTON DRILLING MACHINE WANTED:** Call 262-490-1697

**OLD DRUG STORE STOCK WANTED:** Bottles, displays, signs, advertising, etc. Call David 407-854-8108 (no texting).

## WANTED



901-603-6123

Large Oak  
Showcase  
Cabinets  
w/sliding glass  
doors

## WANTED

### STAMP COLLECTIONS



Old Postcards & Envelopes

WANTED...  
TOP CASH PAID

920-499-6886

STAMPBUYER-WISCONSIN.COM

## FOR SALE

**TELEPHONES:** Over 85 Different genuine 1892-1983, parts, restorations, FREE catalogue. We now offer our entire business for sale 608-582-4124 or www.phonecoinc.com or email phonecoinc@aol.com

**VINTAGE COMICS AND TOYS:** Collectors Asylum, N87 W16453 Appleton Ave, Menomonee Falls, WI. Golden, Silver, Bronze Age comics available, action figures, more. We also buy comics and toys. Will travel. e-mail: parbs4@gmail.com. 262-422-4049. facebook @CollectorsAsylumWI

**DEADLINES ARE MONDAYS @ NOON**

**PLEASE LET OUR ADVERTISERS KNOW WHERE YOU SAW THEIR AD!**

## UPCOMING AUCTION REMINDER

### • Friday, November 23 •

**Younger Auction: Chevy & Antique Auto Parts Close Out Auction, Nov. 23 & 24, 10 AM, Co. Fairgrounds, 4401 S. Charleston Pike Rd., Springfield, OH 660-541-1977**  
www.youngerauction.com See page 14 of Auction Action Antique News Issue #2414

**Hack's Auction & Realty Service, Inc.: Antiques, Doll, Toy & Petroleum Auction, 10 AM, Hack's Auction Antique Center, 400 W. Third St., Pecatonica, IL 815-239-1436**  
www.hacksauction.com See page 13 of Auction Action Antique News Issue #2418

### • Saturday, November 24 •

**Auction Bug: Estate Auction, 10 AM, 14459 W. West Grove Rd., Forrester, IL 815-297-4846**  
Troy Rudy www.auctionbug.biz See page 12 of Auction Action Antique News Issue #2418

### • Wednesday, November 28 •

**Liebe Auction Service: Auction, 5 PM, 105 South Pine St., Weyauwega, WI 920-867-3352**  
E-mail: liebeauctions@centurylink.net  
www.liebeauctionservice.com See page 11 of Auction Action Antique News Issue #2416

### • Friday, November 30 •

**Auctions by Moldenhauer, LLC: 3 Day Toy & Collectible Auction, Nov. 30, 4 PM; Dec. 1 & 2, 10 AM, 1209 Pioneer Rd., Laporte, IN 219-229-0411 or 219-874-2718**  
Mike Moldenhauer See page 14 of Auction Action Antique News Issue #2417

**Millers Auction Co.: Large 2 Day Advertising Auction, Nov. 30 & Dec. 1, 9 AM, Monroe Co. Fairgrounds, 1625 Butts Ave., Tomah, WI 715-963-1100 Cell: 715-299-2543**  
wisconsinjunk@yahoo.com  
www.millersauctionco.com See page 12 of Auction Action Antique News Issue #2419

## AUCTIONEER & SHOW ADVERTISERS!

Send us a post auction article of an auction or show that was advertised in our paper & we will feature

it in the paper and on the front page!

Let buyers see what you can do for them!

Send a few paragraphs, a minimum of 30 photos with captions & prices realized

& for shows, contact info of dealers to

**[auction@auctionactionnews.com](mailto:auction@auctionactionnews.com)**

**DEADLINES ARE MONDAYS AT NOON**

**PAPER IS MAILED EVERY WEDNESDAY**

**PAPER IS DATED FOLLOWING TUESDAY**

December

S	M	T	W	T	F	S
		26		28		1
2	3	4	5	6	7	8
9	10	11	12	13	14	15
16	17	18	19	20	21	22
23	24	25	26	27	28	29
30	31					

# The History of Christmas Cards

*whychristmas.com*



The custom of sending Christmas cards was started in the UK in 1843 by Sir Henry Cole. He was a senior civil servant (Government worker) who had helped set-up the new 'Public Record Office' (now called the Post Office), where he was an Assistant Keeper, and wondered how it could be used more by ordinary people.

Sir Henry had the idea of Christmas Cards with his friend John Horsley, who was an artist. They designed the first card and sold them for 1 shilling each. (That is only 5p or 8 cents today(!), but in those days it was worth much much more.)

The card had three panels. The outer two panels showed people caring for the poor and in the center panel was a family having a large Christmas dinner! Some people didn't like the card because it showed a child being given a glass of wine! About 1000 (or it might have been less!) were printed and sold. They are now very rare and cost thousands of Pounds or Dollars to buy now! The original cards were advertised with the slogan: "Just published, a Christmas Congratulations Card; or picture emblematical of old English festivity to perpetuate kind recollections between dear friends"!

The first postal service that ordinary people could use was started in 1840 when the first 'Penny Post' public postal deliveries began (Sir Henry Cole helped to introduce the Penny Post). Before that, only very rich people could afford to send anything in the post. The new Post Office was able to offer a Penny stamp because new railways were being built. These could carry much more post than the horse and carriage that had been used before. Also, trains could go a lot faster. Cards became even more popular in the UK when they could be posted in an unsealed envelope for one half-penny - half the price of an ordinary letter.

As printing methods improved, Christmas cards became much more popular and were produced in large numbers from about 1860. In 1870 the cost of sending a post card, and also Christmas cards, dropped to half a penny. This meant even more people were able to send cards.

An engraved card by the artist William Egley, who illustrated some of Charles Dickens's books, is on display in the British Museum. By the early 1900s, the custom had spread over Europe and had become especially popular in Germany.

The first cards usually had pictures of the Nativity scene on them. In late Victorian times, robins (a British bird) and snow-scenes became popular. In those times the postmen were nicknamed 'Robin Postmen' because of the red uniforms they wore. Snow-scenes were popular because they reminded people of the very bad winter that happened in the UK in 1836.

Christmas Cards appeared in the United States of America in the late 1840s, but were very expensive and most people couldn't afford them. In 1875, Louis Prang, a printer who was originally from German but who had also worked on early cards in the UK, started mass producing cards so more people could afford to buy them. Mr Prang's first cards featured flowers, plants, and children. In 1915, John C. Hall and two of his brothers created Hallmark Cards, who are still one of the biggest card makers today!

The first known 'personalised' Christmas Card was sent in 1891 by Annie Oakley, the famous sharpshooter and star of Buffalo Bill's Wild West show. She was in Glasgow, Scotland at Christmas 1891 and sent cards back to her friends and family in the USA featuring a photo of her on it. As she was in Scotland, she's wearing tartan in the photo! Annie reportedly designed the cards herself and they were printed by a local printer.

In the 1910s and 1920s, home made cards became popular. They were often unusual shapes and had things such as foil and ribbon on them. These were usually too delicate to send through the post and were given by hand.

Nowadays, cards have all sorts of pictures on them: jokes, winter pictures, Santa Claus or romantic scenes of life in past times. Charities often sell their own Christmas Cards as a way raising money at Christmas.

Charities also make money from seals or stickers used to seal the card envelopes. This custom started in Denmark in the early 1900s by a postal worker who thought it would be a good way for charities to raise money, as well as making the cards more decorative. It was a great success: over four million were sold in the first year! Soon Sweden and Norway adopted the custom and then it spread all over Europe and to America.



**Subscribers Please Note:**  
**There will be no papers for 2 weeks in December. Our last paper will be mailed on December 5th and dated Dec. 11th. Our next paper will be mailed on December 26th.**

**Happy Holidays from  
 the staff of Auction  
 Action Antique News**

**Auction Action Antique News is Read by  
 Top Dealers and Collectors from Across  
 the Country! They are Always Looking to  
 Buy the Best in Antiques & Collectibles!  
 With Over One Million Hits Monthly on Our  
 Website, Your Ad Receives Maximum  
 Exposure to Some of the Top Buyers in the  
 U.S. & Around the World!**

# 11th Annual Antique Show & Sale

## Appraisals & Chili Lunch

### Sponsored by Richfield Historical Society (RHS)

Article by Pete Samson (Richfield Historical Society)

Were you able to attend the RHS Antique and Appraisal show this past February 2018? If not you missed a lot of excitement. Do you ever long to own a priceless antique or know what your antiques might be worth? Well, you can do both at the 2019 RHS Antique Show & Sale, Appraisals & Chili Lunch again held at Friess Lake School, 1740 Hwy 164 in Richfield Wisconsin, February 17th, 2019 9am - 3pm. Admission \$2 for show. RHS has had such success these past 10 years it was decided to continue the event which includes indoor dealer booths and long trusted 5 appraisers, 450 people attended the one-day show in 2018. February is also the time of year we often long for the warmth of summer and visit with friends. The RHS Antique Show & Sale, Appraisals & Chili Lunch is the place you can stay warm, purchase a wonderful antique, discover the estimated value of your antiques, and mingle with friends while enjoying a tasty bowl of Chili.

**DEALERS** - Friess Lake School is in the heart of Richfield and offers easy access and reserved parking for dealers in addition to extensive parking for guests. In recent years the 5 appraisers/dealers brought antiques to sell. In 2018, RHS added indoor vintage/antique dealer booths. Booth fees: \$35 for 10 x 10 booth and \$40 with electric. 8' tables can be rented for \$5 or bring your own. More information regarding Dealer Registration, Guidelines and Booth layout at [www.richfieldhistoricalsociety.org](http://www.richfieldhistoricalsociety.org)

**APPRAISALS** - Bring your coins, stamps, watches, civil war and WWII items as well as any general item for appraisal. Appraisals per item: \$5.00 this fee allows you to enter the Antique Show & Sale area for FREE.

**FOOD** - Delicious Chili along with White Chicken Chili is featured item on the menu. Make your choice and add fixings such as onions, sour cream and cheddar cheese. If you have attended the RHS event before, you will remember the delicious cornmeal muffins, a brownie and beverage included for \$7.00. Chili Dogs went over so well in 2018 we are offering them again in 2019. Homemade pie is \$2.00 per slice.

This event supports projects of the Richfield Historical Society. In particular, restoration of the Messer/Mayer Mill. Now that all foundation walls have been restored the future goal is to "Get the Mill Grinding".

Richfield Historical Society was founded in 1996 to promote the interesting history of the Richfield WI area and pioneers who settled the area. In 1998 the Town of Richfield purchased land which included the Messer/Mayer Mill and Homestead. This property now is known as the Richfield Historical Park. Each year RHS offers various events: Antique Show & Sale, Appraisals & Chili 3rd Sunday in February, Maple Syrup Family Day 4th Saturday in March, Annual Art Fair 4th weekend in July, and Annual Thresheree 3rd weekend in September.

Visit RHS Antique Show & Sale, Appraisals and Chili Lunch once, and you'll return again and again. So, mark your calendar; and we will see you there.

For more information contact Pete Samson at 262-957-7890 or [richfieldhistoricalsociety.org](http://richfieldhistoricalsociety.org)

## The Colors of Christmas

*whychristmas.com*

There are several colors which are traditionally associated with Christmas. This site uses Red, Green and Gold. But why do we have them and what do the colors represent?

Most the colors and their meanings come from the western/northern European traditions and customs, when Christmas is in the middle of winter and it's dark and cold.

### Green

Evergreen plants, like Holly, Ivy and Mistletoe have been used for thousands of years to decorate and brighten up buildings during the long dark winter. They also reminded people that spring would come and that winter wouldn't last forever!

The Romans would exchange evergreen branches during January as a sign of good luck. The ancient Egyptians used to bring palm branches into their houses during the mid winter festivals.

In many parts of Europe during the middle ages, Paradise plays were performed, often on Christmas Eve. They told Bible stories to people who couldn't read. The 'Paradise Tree' in the garden of eden in the play was normally a pine tree with red apples tied to it.

Now the most common use of green at Christmas are Christmas Trees.

### Red

As mentioned above, an early use of red at Christmas were the apples on the paradise tree. They represented the fall of Adam in the plays.

Red is also the color of Holly berries, which is said to represent the blood of Jesus when he died on the cross.

Red is also the color of Bishops robes. These would have been worn by St. Nicholas and then also became Santa's uniform!

### Gold

Gold is the color of the Sun and light - both very important in the dark winter. And both red and gold are the colors of fire that you need to keep you warm.

Gold was also one of the presents brought to the baby Jesus by one of the wise men and traditionally it's the color used to show the star that the wise men followed.

Silver is sometimes used instead of (or with) gold. But gold is a 'warmer' color.

### White

White is often associated with purity and peace in western cultures. The snow of winter is also very white!

White paper wafers were also sometimes used to decorate paradise trees. The wafers represented the bread eaten during Christian Communion or Mass, when Christians remember that Jesus died for them.

White is used by most churches as the color of Christmas, when the altar is covered with a white cloth (in the Russian Orthodox Church Gold is used for Christmas).

### Blue

The color blue is often associated with Mary, the mother of Jesus. In medieval times blue dye and paint was more expensive than gold! So it would only be worn by Royal families and very rich people. Mary was often painted wearing blue to show she was very important.

Blue can also represent the color of the sky and heaven.

### Purple

During Advent, purple and sometimes blue is used in most churches for the color of the altar cloth (in the Russian Orthodox Church red is used for advent).

Be Sure To Check Out Our  
SHOP ITEMS FOR SALE  
(with photos & Prices) of Featured Items  
FOR SALE from our  
Antique Mall and Shop Advertisers  
[www.auctionactionnews.com](http://www.auctionactionnews.com)

Madison Area Doll Club Presents

**"A World of Dolls!"**  
 48th Annual Doll Show and Sale  
**Saturday, March 23rd, 2019**  
**9:00am to 3:00pm**  
 Exhibition Hall at the Alliant Energy Center  
 1919 Alliant Energy Way ~ Madison, WI 53713

Admission: \$5.00 ~ Under 18 FREE with adult  
 Parking: \$7.00 per vehicle  
 Bring this ad in for \$1.00 OFF Admission!

Contact: Vicki 608-279-5298 • dollcoll@charter.net  
 Nancy 608-271-1546 • nancyawolf@gmail.com

**Madison Area Doll Club**  
 Preserving Yesterday And Today.....For Tomorrow



**National Vendors**  
**Appraisals**  
**Grand Prize**  
**Repair Consultations**  
**Educational Display**  
**Grand Prize &**  
**Silent Auction at 1:00**

**11th Annual Antique Show & Sale**  
**Appraisals & Chili Lunch**



**February 17th, 2019**  
 9am-3pm - \$2.00 Admission (10 & under Free)  
 Friess Lake School, 1750 Hwy 164  
 I-41 to Hwy 164 West (Holy Hill Rd) to Hwy 164  
 Richfield, Wisconsin

Free Parking \* Food Available \* Free Admission with \$5 Appraisal Item Fee

**Vintage • Antiques • Collectables**  
**Quality Dealers plus Five Appraisers**  
 Proceeds benefit restoration of historic  
 Messer/Mayer Grist Mill in Richfield

More information & Dealer Forms contact:  
 Pete Samson 262-957-7890 or richfieldhistoricalsociety.org  
 Sponsored by Richfield Historical Society



**Dealers Wanted**

# Tinley Park Annual Holiday Show

Our famous annual Tinley Park Annual Holiday Toy Show is not to be missed! People come from Wisconsin, Michigan, Indiana, and all over Illinois to Tinley Park High School in Tinley Park, Illinois for this once a year event. Many vendors stock pile their best items to sell at this show! This toy show offers everyone a chance to buy their favorite new or vintage collectible toys. Pressed tin cars, Robots, Tonka trucks, Smith Miller, Hot Wheels, Japanese tin, Barbie dolls, GI Joe, Revell and Aurora plastic models, it's all right here.

Held at Tinley Park High School, this fantastic facility offers us parking for over 500 cars and room for more than 250 tables. Tinley Park High School is right off of Interstate I-80 and has very easy to access from any direction.

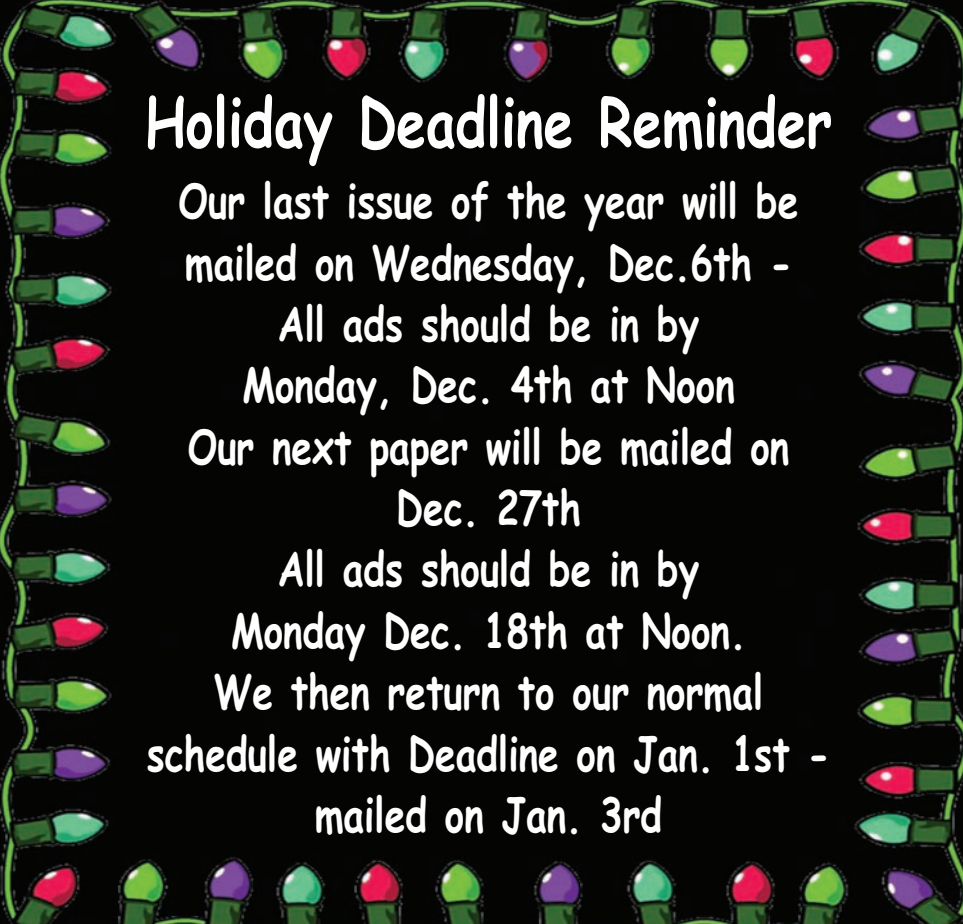
If there's a new or vintage toy you've been looking for, this is the place to find it! Plastic model kits, die cast cars, space toys, action figures, battery ops, collectible dolls, slot cars, and much more.

From Antique to new there's a collectible toy here for you!




Get More **BANG** for  
 your **BUCK** with  
 an ad in  
**Auction Action**  
**Antique News!**

715-524-3076 Email:  
**auction@auctionactionnews.com**



**Holiday Deadline Reminder**

Our last issue of the year will be mailed on Wednesday, Dec. 6th -  
 All ads should be in by  
**Monday, Dec. 4th at Noon**  
 Our next paper will be mailed on  
**Dec. 27th**  
 All ads should be in by  
**Monday Dec. 18th at Noon.**  
 We then return to our normal  
 schedule with Deadline on Jan. 1st -  
 mailed on Jan. 3rd

# The General Store

## ANTIQUE MALL



1277 Fond du Lac Ave., Kewaskum, WI 53040 • 262-626-2885

**OPEN 7 Days a Week: 10:00am - 5:00pm / Thursdays: 10am-6:30pm**



Trunk \$165.



Rustic metal top table / workbench, \$695.



Sled \$195.



Buffet, \$675.



Check out our Christmas decor!

Wisconsin Dells *Antique Mall.com*

(608) 356-7600  
Located 1/8 mile off I 90/94 Exit 92

Visit our Artists at The Craft Mall

We Ship Anywhere!



Open 7 days a week: 10-6 Sun. - Thurs.; 10-8 Fri. - Sat.



DLR BEA - Stained glass vintage light box, beautiful when lit, 2ft. tall, \$135.



DLR 38 - Leinie Lodge fish clock, 3ft. fish, \$695.



DLR MAK - Tons of collectible Disney pins, assorted prices.

DLR 3 - Vintage silver tipped wooden skis, leather ski boots, great condition, \$119.95.



DLR 45 - Beautiful grand display case, \$1,275.

**S2279 Timothy Ln., Wisconsin Dells, WI**  
EASY ON - EASY OFF! Exit 92 off I-90/94 - East on Hwy 12 to Exit 212. Follow blue signs!  
250 Dealers 12,000 Sq. Ft.

## Northern Illinois Antiques Dealers Association

*Presents its 59th Annual*

# ANTIQUÉ SHOW

ROCKFORD, ILLINOIS  
FOREST HILLS LODGE

(Located 1/2 mile East of Route 251 on Route 173)

SAT., FEBRUARY 16, • 10 am to 5 pm

SUN., FEBRUARY 17, • 11 am to 4 pm

**Donation \$6 ~ \$5 With This Ad**

40 Quality Dealers with a wide variety of Antiques, including Furniture, Architectural Fragments, Woodenware, Textiles, Stoneware, China, Glass, Silver, Jewelry, Toys and More!

**Come Celebrate Our 59th Year With Us!**

**Gift Certificate Drawings Will Be Held Both Days!**

**FREE Parking ~ Food Available**

Show profits donated to Historic Preservations & Scholarships

For More Information: call 815-761-1444 or

www. [NIADAAntiques.com](http://NIADAAntiques.com) ~ email: [NIADA@aol.com](mailto:NIADA@aol.com)



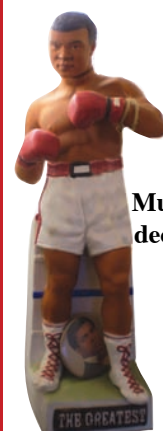
1020 Gardner Street  
South Beloit, IL 61080

815-389-1679



Located 1 mile west of I-90; Take Exit #1 Route 75 and turn west.

Open 7 Days: Sun.-Fri. 10-5 ~ Sat. 10-6 • [www.angelas-attic.com](http://www.angelas-attic.com)



DLR 48 - Muhammed Ali decanter w/pin, \$50



DLR 72 - Do Not Park Here sign, on heavy stonehouse signs metal base, \$295.



DLR 66 - Inv. 3192 - Tonka Ser-Vi-Car, \$95.

DLR 92 - Vintage cloth Santa mask, \$25.



DLR 155 - Large vintage plaster Santa bank, \$24.



DLR 09 - Vintage jeweled knit dress. SALE PRICE \$30.