

Ringleader,  
Roustabouts

# Pleasure Island (Part 1)

**Ad lib.**

**RINGLEADER:**

1  
2  
Psssst...

3  
4  
5  
6  
Should-n't there be a place where no-thing is naugh - ty? \_\_\_\_\_

7  
8  
9  
10  
Should-n't there be a place where an - y-thing goes? \_\_\_\_\_ Where

11  
12  
13  
"should-n't" and "can't" and "don't" And "must-n't" and "ought" e -

14  
15  
16  
17  
- va - po - rate And fun's the on - ly biz Guess what? There

**18 March tempo, a la Carnival**

**RINGLEADER  
& ROUSTABOUTS:**

18  
19-20  
21  
is! Plea - sure

28

22  
 Is - land Plea - sure Is - land It's that

26 RINGLEADER:  
 "what's - for-sup - per? Can - dy - cake - and - pie" land See that

30 ROUSTABOUTS:  
 win - dow why not break it? See that toy there ahh, just take it! And you'll

34 RINGLEADER:  
 nev - er have a les - son Or a chore to do Rules and

38 RINGLEADER & ROUSTABOUTS:  
 li - mits kiss - good - bye land Plea - sure

42  
 Is - land Wel - comes you!



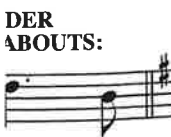
Where



e -



There



DER ABOUTS:

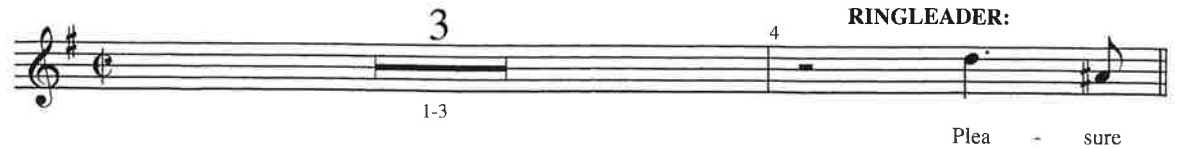
lea - sure

#28 - Pleasure Island (Part 1)

Ringleader,  
Pinocchio,  
Delinquents

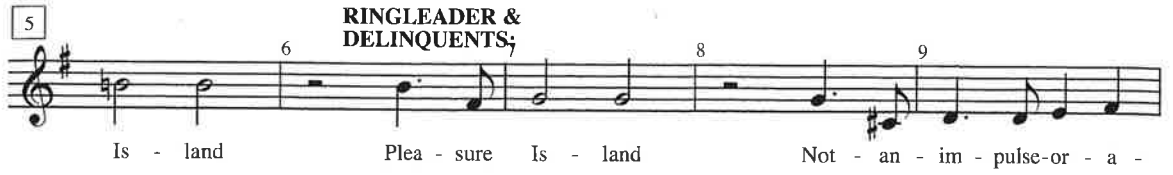
# Pleasure Island (Part 2)

3 **RINGLEADER:**



1-3 Plea - sure

5 **RINGLEADER & DELINQUENTS;**



6 8 9 Is - land Plea - sure Is - land Not - an - im - pulse - or - a -

10 **RINGLEADER:**



11 12 13 Whim - should - you - de - ny land See that kit - ten? Go on,

14 **RINGLEADER & DELINQUENTS:**



15 16 kick it! See this fence? Break ev' - ry pick - et You can

17 **RINGLEADER:**



18 19 20 brag a - bout it ev - en if it is - n't true If you

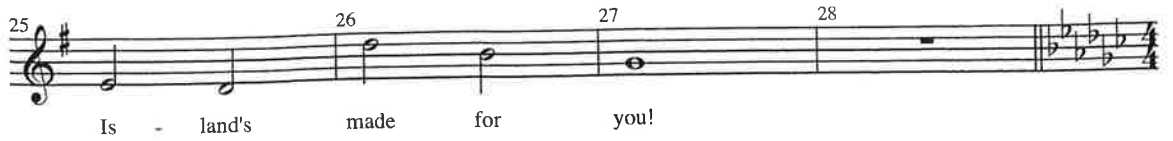
21 **RINGLEADER & DELINQUENTS:**



22 23 24 want a cuss - and - lie land Plea - sure

29

25 26 27 28

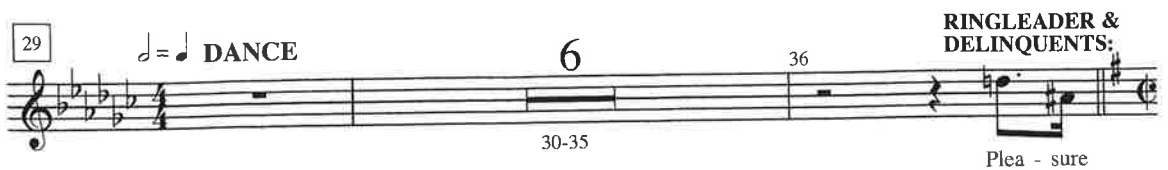


Is - land's made for you!



sure

29  $\text{♩} = \text{♩}$  DANCE 6 36

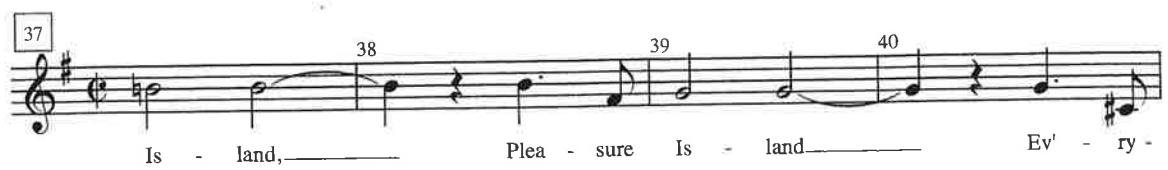


Plea - sure

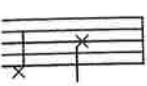


se-or - a -

37 38 39 40

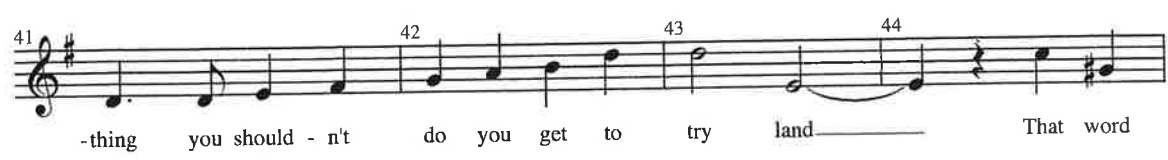


Is - land, Plea - sure Is - land Ev' - ry -



Go on,

41 42 43 44



-thing you should - n't do you get to try land That word

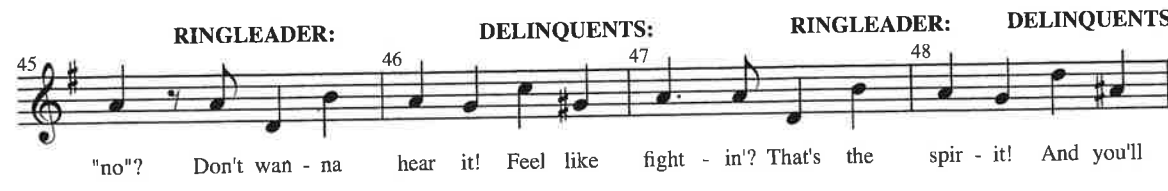
RINGLEADER & DELINQUENTS:



ou can

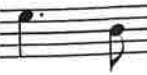
RINGLEADER: DELINQUENTS: RINGLEADER: DELINQUENTS:

45 46 47 48



"no"? Don't wan - na hear it! Feel like fight - in'? That's the spir - it! And you'll

GLEADER:



If you

49 50 51 52 RINGLEADER:



nev - er use a wash - cloth Or a brush & comb "mind your

LEADER & DELINQUENTS:



Plea - sure

#29 - Pleasure Island (Part 2)

53

man - ners"? \_\_\_\_\_ Not in my land \_\_\_\_\_ Plea - sure

Detailed description: This musical staff contains measures 53 through 56. It begins with a treble clef and a key signature of one sharp (F#). Measure 53 starts with a quarter note G4. Measure 54 has a half note G4 with a slur over it. Measure 55 has a quarter note A4. Measure 56 has a half note G4 with a slur over it. The lyrics are: "man - ners"? \_\_\_\_\_ Not in my land \_\_\_\_\_ Plea - sure".

57

Is - land Your new home Plea - sure

**PINOCCHIO:**

Detailed description: This musical staff contains measures 57 through 60. It begins with a treble clef and a key signature of one sharp (F#). Measure 57 has a quarter note G4. Measure 58 has a half note G4. Measure 59 has a half note G4. Measure 60 has a quarter rest followed by a quarter note G4. The lyrics are: "Is - land Your new home Plea - sure". The name "PINOCCHIO:" is written above measure 60.

61

Is - land My new home!

Detailed description: This musical staff contains measures 61 through 64. It begins with a treble clef and a key signature of one sharp (F#). Measure 61 has a quarter note G4. Measure 62 has a half note G4. Measure 63 has a half note G4. Measure 64 has a quarter rest. The lyrics are: "Is - land My new home!".

#29 - *Pleasure Island (Part 2)*

Ringleader

## Pleasure Island - Part 3

30



lea - sure



a - sure

**Slowly and Freely, Sinister**

RINGLEADER:



Plea - sure



Is - land Plea - sure Is - land You - will -



- sing - a - diff' - rent - tune - here - By - and - by land But you



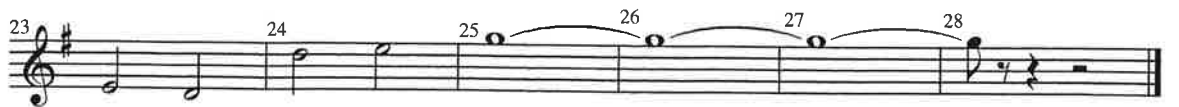
won't be sing - ing on key 'Cuz you've turned in - to a don - key And we've



shipped you off To plow a field or haul de - bris As we



leave you with a smile and this Plea - sure



Is - land mem - o - ry...

## #30 - Pleasure Island (Part 3)