

Children, Parents,  
Geppetto

# Toys

2

**Bright** ♩ = 160

1 2 **CHILD 1:** 3 4

I want the mod - el train that blows real smoke!

5 **CHILD 2:** 6 7

I want the rock - ing horse with big brown eyes!

8 **CHILD 3:** 9

You know Gep - pet - to's la - test are sure to be the grea - test!

10 **CHILD 4:** 11 **CHILDREN:**

Like that fly - ing fish that real - ly flies! There's toys of ev' - ry shape and

12 13

size! I don't know how I'll e - ver make my choice

14 15

from all your new cre - a - tions, dear Gep - pet - to

2

16 17  
 All Spring I kept an eye out, now I can't wait to try out

18 *rall.* 19  
 each new top and boat and block and mar - io - nette, oh...

20 *a tempo* 21 22  
 Toys! I'm in a room that is full— of toys! I'm in a

23 24 25  
 the grea - test! shop that is burst - ing with toys— things you can pum - mel and pull— I see

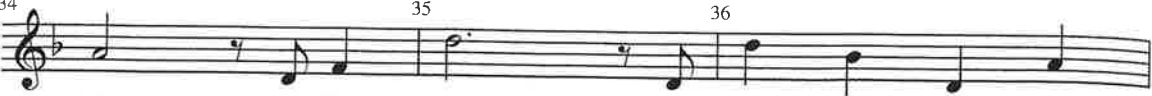
26 27  
 shape and toys you jig - gle, toys you jug - gle toys you hold at night and snug - gle

28 **BOYS:** **GIRLS:** **CHILDREN:** 29  
 choice Boys or girls which e - ver the case,— need


30 31  
 - pet - to toys to put a smile on their face— Be -


#2 - Toys


32  33  
 - fore they lose their pie - ces or their wheels or their shine,— give me

34  35 36  
 toys, I love toys, es - pec - ially when they're

37  3  
 mine! 38-40

41 **CHILD 5:**  42  
 I want that cas - tle with the work - ing moat!

43 **CHILD 6:**  44  
 I want those march - ing sol - diers, and to haul them,

45  46 **CHILD 7:**  
 this lit - tle woo - den wa - gon! Buy me that sca - ry dra - gon!

**CHILD 8:** **CHILD 9:** *rall.* **CHILDREN:**  
 47  48  
 Climb - ing mon - keys! Dan - cing don - keys! Look at all them

#2 - Toys

49 *a tempo* 50 51  
 toys! I'm in a room that is full— of toys! I'm in a

52 53 54  
 shop that is burst - ing with toys— with things you pum-mel and pull, I see

55 56 57  
 toys you wig - gle, toys you wind up— How'll I e - ver make my mind up!?

58 **MOTHER 1:** **FATHER 1:** **MOTHER 2:**  
 59 60  
 No dear, that's much too fra-gile! No, dear, that's too ex-pen-sive! No, dear, that makes too much

61 62 **FATHER 2:**  
 noise— re - mem - ber Mom - my's head aches! No, dear, you'll on - ly break that!

63 **MOTHER 3:** **PARENTS:** 64 65  
 No, dear, your Dad could make that! You al-rea-dy have so ma-ny toys— Don't be gree-dy!

66 **MOTHER 4:** **FATHER 3:** 67  
 Please, dear, don't start that sniv' - ling! Please, dear, don't throw a tan - trum!

#2 - Toys

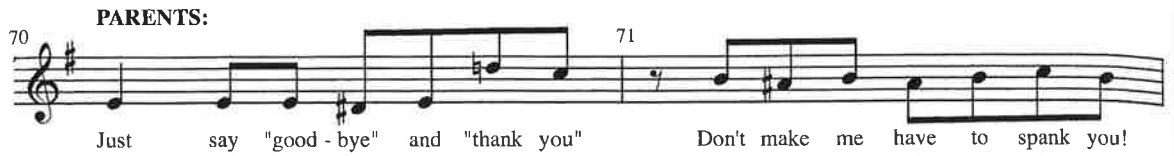
**MOTHER 5:**



68 69

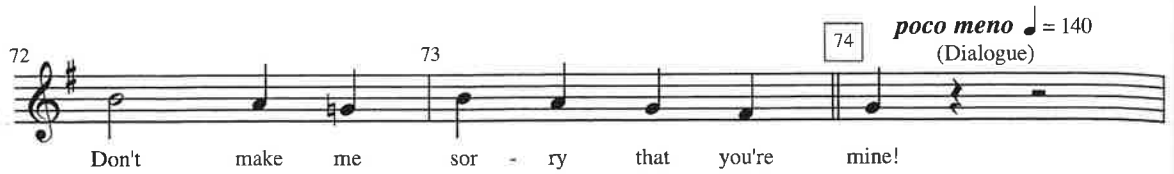
You know mom - my hates it when you whine— it's so ug - ly!

**PARENTS:**



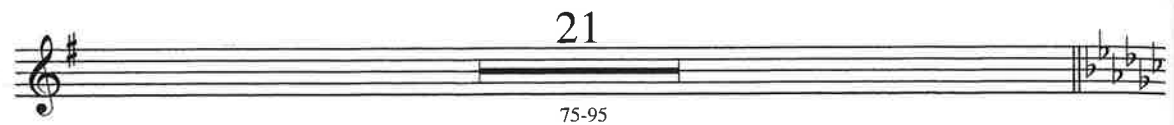
70 71

Just say "good - bye" and "thank you" Don't make me have to spank you!



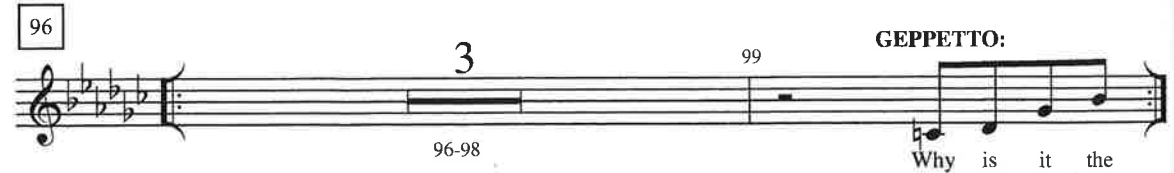
72 73 74 *poco meno* ♩ = 140 (Dialogue)

Don't make me sor - ry that you're mine!



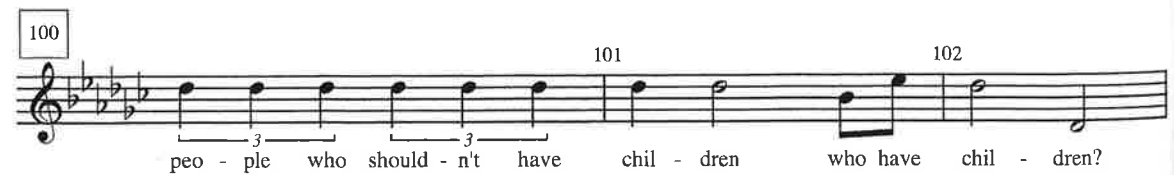
75-95

21



96 99 **GEPPETTO:**

Why is it the



100 101 102

peo - ple who should - n't have chil - dren who have chil - dren?



103 104

Why is it the peo - ple who don't know how

#2 - Toys



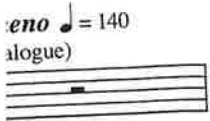
g - ly!

105 luc - ky they are who are blessed? 106 Why is it the 107



o spank you!

108 ones who see chil - dren as 109 both - ers 110 are the ones who get to be fath - ers, 111 when



meno = 140  
alogue)

112 some-one like me 113 clear - ly would be the best? 114 There must be a 115



116 slip - up in hea - ven's 117 work - shop 118 or a wrin - kle in na - ture's de - sign 119 that I



y is it the

120 spend my days with the chil - dren 121 of the peo - ple who should - n't have 122 123



chil - dren?

123 chil - dren, 124 and none of them are 125



know how

126 mine, 127 *rall.* none of them will 128 e - ver be 129

#2 - Toys

130 **Tempo I** ♩ = 160 **CHILDREN:**

mine... Look! Look! That whirl - a - gig with the thing - a - ma - jig is a

133 134 135

toy I ne - ver had! I don't know, but I want it real - ly bad!

**PARENTS:**

What is it?

136 137 138

Please? Pleeeeze!

**GEPPETTO:**

Why is it the

139

CHILDREN:

140

Toys! I'm in a room that is full of

PARENTS:

No, dear, that's much too fra - gile, no dear, that's too ex - pen - sive,

GEPPETTO:

peo - ple who should - n't have chil - dren who have

141

142

toys! I'm in a shop that is burst - ing with

no, dear, that makes too much noise. Re - mem - ber Mom - my's head - aches!

chil - dren? Why is it the



143 144

toys— with things to pum - mel and pull, — I see  
No, dear, you'll on - ly break that, no, dear, your dad could make that,  
peo - ple who don't know how luc - ky they are who are

Detailed description: This block contains musical notation for measures 143 and 144. It consists of three staves. The first staff starts at measure 143 with a treble clef and a key signature of one flat. The melody begins with a half note G4, followed by quarter notes A4, B4, and C5. Measure 144 continues with quarter notes D5, E5, F5, and G5. The second staff continues the melody with quarter notes G4, A4, B4, and C5 in measure 143, and quarter notes D5, E5, F5, and G5 in measure 144. The third staff features a triplet of eighth notes (G4, A4, B4) in measure 143, and a triplet of eighth notes (C5, D5, E5) in measure 144, followed by quarter notes F5 and G5. The lyrics are written below the staves.

145 146

toys you jig - gle, toys you jug - gle, toys you hold at night and snug - gle!  
you al - rea - dy have so ma - ny toys— don't be gree - dy!  
blessed? There must be a

Detailed description: This block contains musical notation for measures 145 and 146. It consists of three staves. The first staff starts at measure 145 with a treble clef and a key signature of one flat. The melody consists of quarter notes G4, A4, B4, and C5 in measure 145, and quarter notes D5, E5, F5, and G5 in measure 146. The second staff continues the melody with quarter notes G4, A4, B4, and C5 in measure 145, and quarter notes D5, E5, F5, and G5 in measure 146. The third staff features a half note G4 in measure 145, and quarter notes A4, B4, and C5 in measure 146. The lyrics are written below the staves.

#2 - Toys

see

ld make that,

who are

and snug - gle!

dy!

must be a

147

Boys or girls, which e - ver the case,— need

Please, dear, don't start that sniv' - ling, please, dear, don't throw a tan - trum,—

slip - up in hea - ven's work - shop or a

149

toys to put a smile on our face— Be -

you know Mom - my hates it when you whine...

wrin - kle in na - ture's de - sign that I

*It's so ugly!*

#2 - Toys

151 152

- fore they lose their pie - ces or their wheels or their shine,— give me  
Just say "good - bye" and "thank you" don't make me have to spank you,  
spend my days with the chil - dren of the

Detailed description: This block contains the first two lines of musical notation. The first line starts at measure 151 and ends at measure 152. It features a treble clef, a key signature of one flat (B-flat), and a 2/4 time signature. The melody consists of eighth and quarter notes. The lyrics are: "- fore they lose their pie - ces or their wheels or their shine,— give me". The second line also starts at measure 151 and ends at measure 152. It features a treble clef, a key signature of one flat, and a 2/4 time signature. The melody consists of quarter and eighth notes. The lyrics are: "Just say 'good - bye' and 'thank you' don't make me have to spank you,". The third line starts at measure 151 and ends at measure 152. It features a treble clef, a key signature of one flat, and a 2/4 time signature. The melody consists of quarter and eighth notes. The lyrics are: "spend my days with the chil - dren of the".

153 154 155 156

toys, I love toys, es - pec - ially when they're  
don't make me sor - ry sor - ry that you're...  
peo - ple who should - n't have chil - dren

Detailed description: This block contains the next four lines of musical notation. The first line starts at measure 153 and ends at measure 156. It features a treble clef, a key signature of one flat, and a 2/4 time signature. The melody consists of quarter and eighth notes. The lyrics are: "toys, I love toys, es - pec - ially when they're". The second line starts at measure 153 and ends at measure 156. It features a treble clef, a key signature of one flat, and a 2/4 time signature. The melody consists of quarter and eighth notes. The lyrics are: "don't make me sor - ry sor - ry that you're...". The third line starts at measure 153 and ends at measure 156. It features a treble clef, a key signature of one flat, and a 2/4 time signature. The melody consists of quarter and eighth notes. The lyrics are: "peo - ple who should - n't have chil - dren".

#2 - Toys



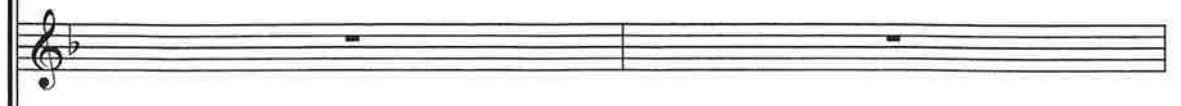
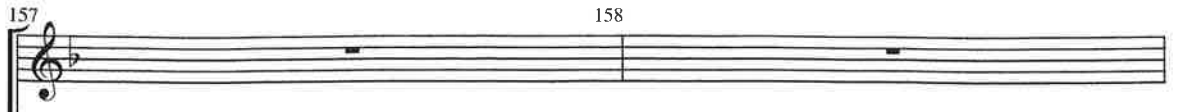
ve me



to spank you,



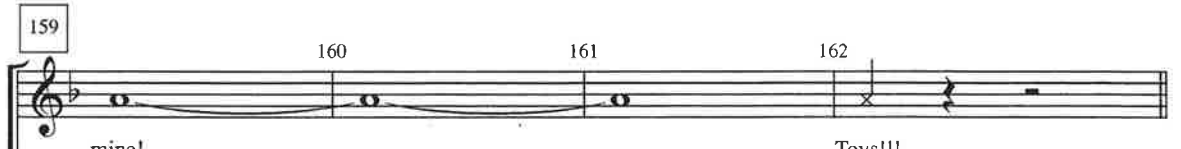
of the



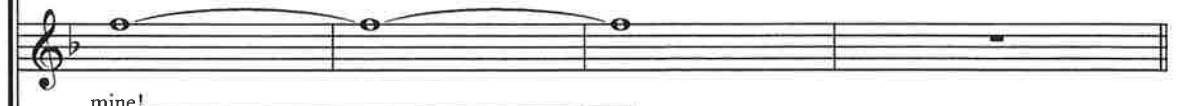
**GEPETTO:**



None of them are



mine! Toys!!!



mine!



mine!

#2 - Toys