



SEW-ON-THE-LINE™ **ZIG-ZAG RAINBOW**

Easy Foundation Paper Piecing



FINISHED SIZE: 36" x 45"

Designed by Annis Clapp - Machine Quilted by Donna Akins

P122 ZIG-ZAG RAINBOW

Finished Size: 34" x 43"

Read all instructions carefully before starting.

The block units for this quilt are made using my Sew-On-The-Line™ templates for foundation paper piecing. By using these templates and sewing and cutting directly on the lines, the block units can be sewn quickly and accurately without needing a special ruler or having to carefully align the seams for a ¼" seam allowance.

MAKING FOUNDATION COPIES

Make 6 copies each of Block Unit templates A and B on 8½" x 11" foundation paper.

CUTTING FABRIC

Tip: Layer 2 fabrics from same color family right sides together with lighter fabric on top before cutting pieces.

From each of 24 fat eighths, cut:

1 rectangle 10½" x 7½" for blocks.

3 rectangles 1½" x 6½" for pieced border.

From fabrics #5 and #22, cut:

2 squares each 3" x 3" for corners.

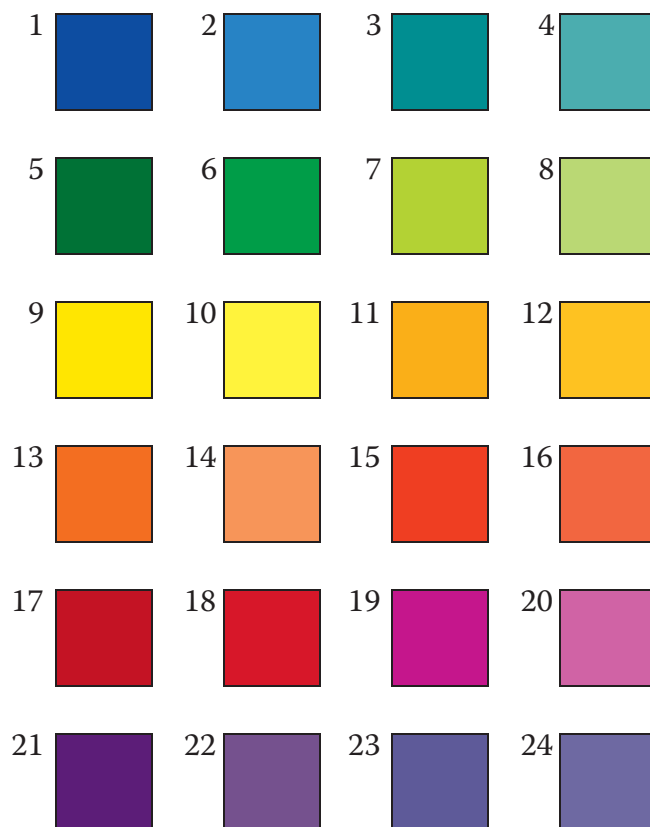
From inner border and binding fabric, cut:

*4 strips 1½" x WOF for inner border.

4 strips 2½" x WOF for binding.

*Do not cut until quilt center and pieced borders are finished.

Cut a small swatch from each fabric and make a fabric chart before starting.

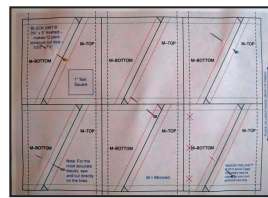
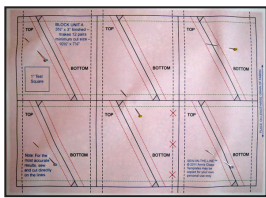


Fabrics are numbered in the order they will be used in the quilt from top to bottom. The mirrored bottom of the final pair 23/24 will be at the top of the quilt.

Front cover photo by Annette Plog.

MAKING THE BLOCKS

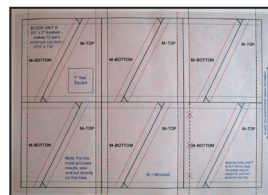
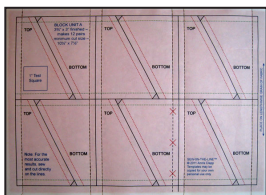
1. Pair 7½" x 10½" fabrics together from the same color family with the lighter fabric on top.
2. Press fabric pairs together with a steam iron to remove any wrinkles. Place in finished fabric order before going to the next step. Every other fabric pair needs to be a mirror image.
3. Place a paper foundation on top of each pair, making sure the fabric extends past the outside black lines, and use a few straight pins to secure in place. A pin at each corner and one in the center is sufficient. For Block Unit A use fabric pairs 1/2, 5/6, 9/10, 13/14, 17/18, and 21/22. For mirrored Block Unit B use fabric pairs 3/4, 7/8, 11/12, 15/16, 19/20, and 23/24.



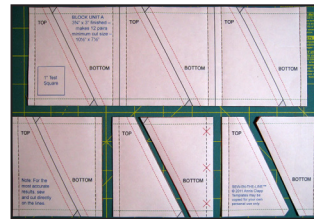
4. Note that red X's have been marked on the black dashed line for one of the bottom units of Block Unit A and one of the mirrored bottom units of Block Unit B. These need to be left unsewn for the sides of the quilt center.

Tip: If you are making a larger quilt you will only need to leave the units unsewn on half of the pages for each fabric combination.

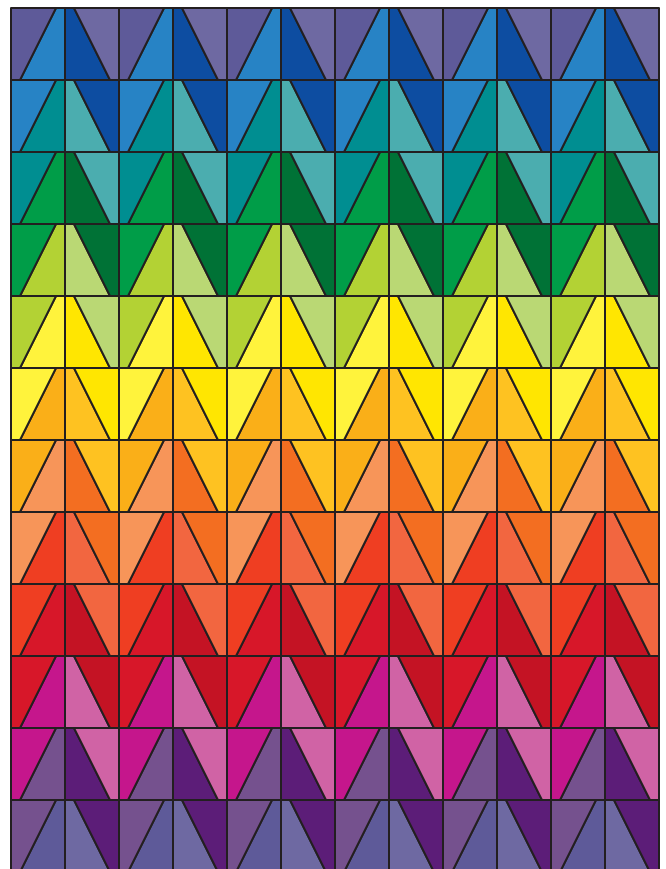
5. Using a 1.5 stitch length, a size 14 needle, and a fine thread such as Aurifil, sew on the dashed black lines. An open toe walking foot will give best results. Chain sew multiple pairs at the same time.



6. Press with a dry hot iron on fabric side to set seams. Protect pressing surface from ink transfer if needed.
7. Cut on the black solid lines. Turn the block units paper side down and press toward darker fabric.



8. Do not remove paper. Place block units on a design wall as shown in the diagram below.



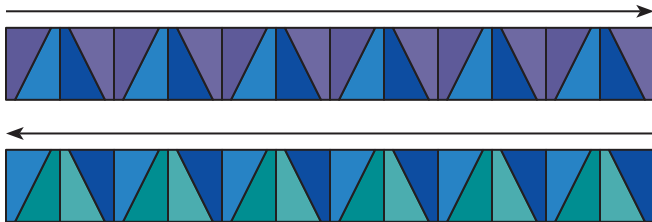
Tip: If you aren't using any directional prints, it won't matter which block units are used for the top or bottom.

ASSEMBLING THE QUILT CENTER

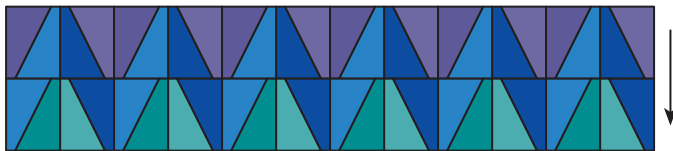
1. Pin block units together into pairs with the paper side on top. The red dashed line should start and end at the edge of the underneath fabric. There will be no paper on the underneath fabric. Sew on the red dashed line. Remove paper from seam allowance and press every other row in opposite directions.



2. Continue sewing pairs together to make 12 rows. Add unsewn pairs to sides.

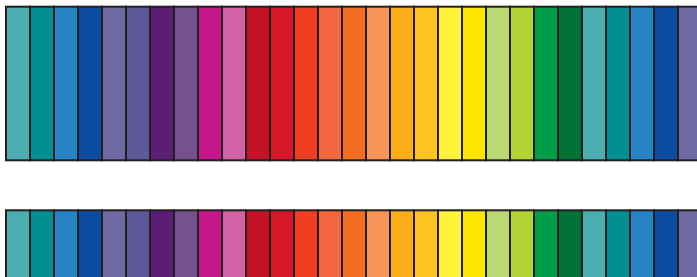


3. Remove paper and sew rows together, matching straight seams, to complete quilt center. Press seams down.



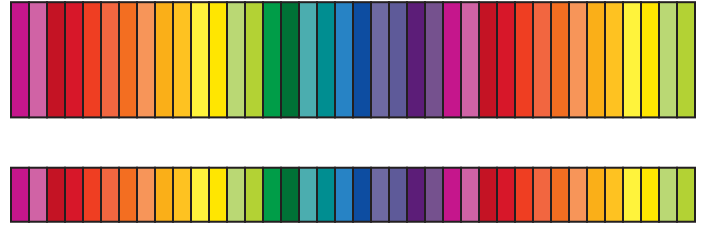
MAKING THE PIECED BORDER

1. Sew the 1½" x 6½" rectangles together as shown, or as desired, for top and bottom borders. Press seams in one direction. Cut into 2 strip sets 3" wide.



Make 2

2. Sew the 1½" x 6½" rectangles together as shown, or as desired, for side borders. Cut into 2 strip sets 3" wide.



Make 2

FINISHING

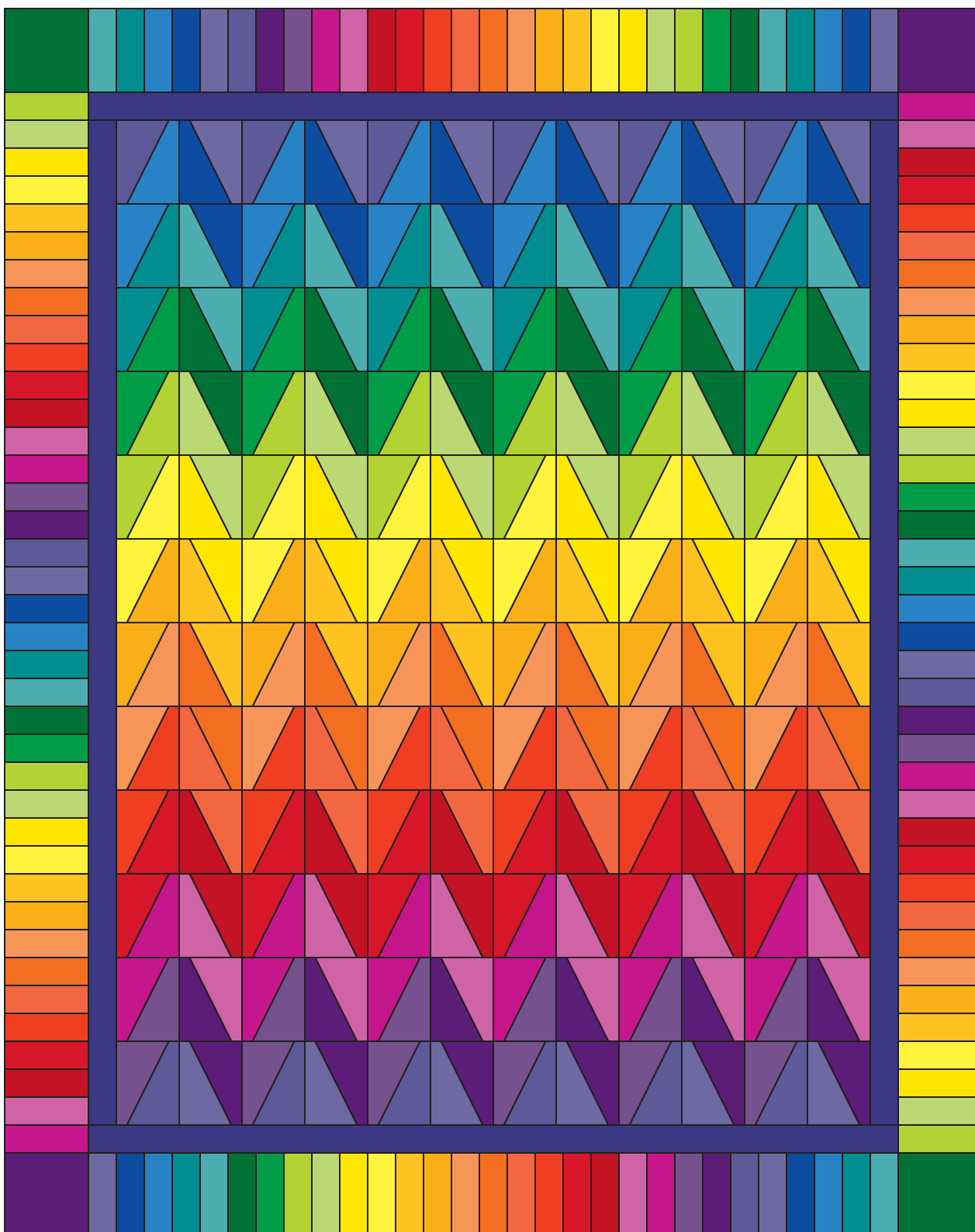
1. Measure the length of the quilt center. Measure the length of the side borders. The difference should be 2". If it is more, increase the size of the inner border. If it is less, decrease the size of the inner border. (Divide the total difference by 2 and add ½" for seam allowances to get new inner border measurement.)
2. Repeat for width of quilt center and width of top and bottom borders. If necessary, adjust some of the seams to equal the same difference as the side borders.
3. Referring to the Quilt Diagram, add inner border to quilt. Press to inner border.
4. Add side borders to quilt. Press to inner border.
5. Add a corner square to top and bottom borders as shown. Press to corner squares. Add to quilt. Press to inner border.



6. Layer with backing and batting and quilt.
7. Bind and enjoy.

Tip: Arrange the pieced borders around the quilt center before sewing to make sure they are going in the right direction.

QUILT DIAGRAM



BLOCK UNIT B
 $3\frac{3}{4}$ " x 3" finished –
 makes 12 pairs –
 minimum cut size –
 $10\frac{1}{2}$ " x $7\frac{1}{2}$ "

M-TOP

M-BOTTOM

1" Test
 Square

M-TOP

M-BOTTOM

Note: For the
 most accurate
 results, sew
 and cut directly
 on the lines.

M = Mirrored

SEW-ON-THE-LINE™
 © 2011 Annis Clapp
 Templates may be
 copied for your own
 personal use only.

PLACE ON LENGTHWISE GRAIN OF FABRIC

P122 ZIG-ZAG RAINBOW

Finished Size: 34" x 43"

Block Size: 3¾" x 3"

The block units for this quilt are made using my Sew-On-The-Line™ templates for foundation paper piecing. By using these templates and sewing and cutting directly on the lines, the block units can be sewn quickly and accurately without needing a special ruler or having to carefully align the seams for a ¼" seam allowance. The fabrics from 12 color families used for this quilt were taken from the color wheel: blue, blue green, green, yellow green, yellow, yellow orange, orange, red orange, red, red violet, violet, and blue violet. You may use any color combination.

For a larger quilt, purchase 1 fat quarter of each fabric to make 4 times as many blocks. Use the excess fabric for a pieced binding. Additional fabric will be needed for borders and backing. The finished quilt will measure 54" x 72" before borders with 2 color repeats.

FABRIC AND SUPPLIES

Yardage is based on 42" usable fabric width.

1 fat eighth each of 24 fabrics,

2 from each of 12 color families
with a slight difference in value

½ yd for Inner Border and Binding

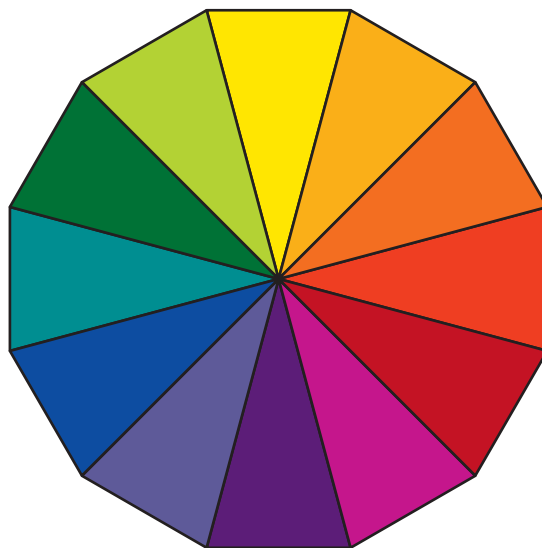
1½ yds Backing

40" x 49" Batting

*Foundation Copy Paper

Open Toe Walking Foot

Rotary Cutter, Mat & Rulers



**My favorite foundation paper is a translucent vellum from Office Depot, Item 345-854 (11 x 17) or 345-644 (8½ x 11). It's see-through, feeds through my inkjet printer with no paper jams, no shrinkage, no ink transfer, and is easy to remove.*

© Copyright 2012 by Annis Clapp. All rights reserved.

AMC Designs
PO Box 170543
Arlington, TX 76003
E-mail: ajclapp@aol.com
www.amc-quilts.com