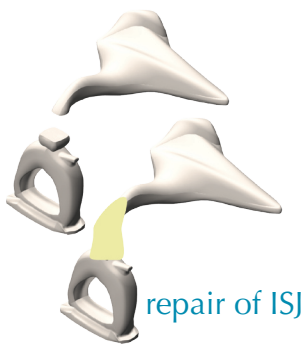


fuse

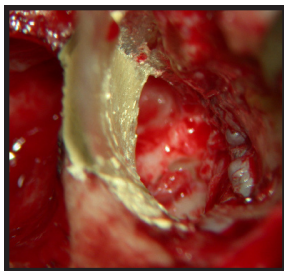
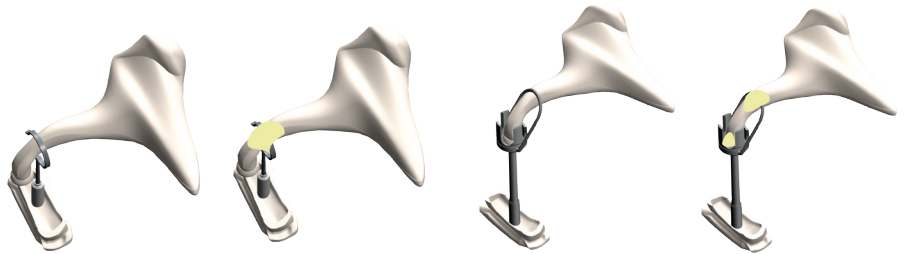


a safer glass ionomer cement

The "NEW" aluminum reduced GIC



primary & revision of stapedotomy

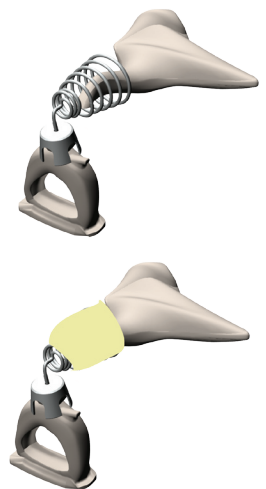


reconstruction of canal wall

Applications of **fuse** include:

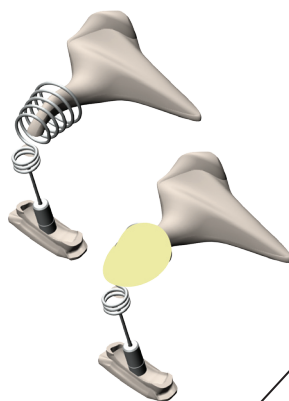
- ...repair of ossicular discontinuity
- ...reconstruction of canal wall
- ...repair of attic or scutum
- ...primary & revision stapedotomy
- ...cementing of K-Helix designs

cementing of K-Helix designs



Advantages of **fuse** are:

- ...non-exothermic
- ...bonds to bone and metal
- ...minimal shrinkage on setting
- ...ease of use
- ...high compressive strength
- ...low aluminum content



Cat. #	Description
985-001	fuse 1 gram capsule
985-002	fuse cement applicator
985-003	fuse cement amalgamator

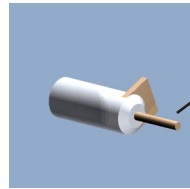
fuse

- ...is supplied in 1 gram sterile vials
- ...is easy to prepare and apply
- ...allows 4 minutes for placement and manipulation
- ...sets in approximately 10 minutes
- ...has repeatable consistency and control

Placement:

- Cement should be placed in a dry field within 1-3 minutes of being activated.
- Place directly on bone avoiding contact with soft tissues until set (approximately 10 minutes).
- Maintain a constant dry field during application and setting of the cement.
- Use minimum amount of cement required.
- Care should be taken to protect the oval window and facial nerve to avoid possible contact with uncured cement.
- Once cement has completely set (approximately 10 minutes), it can be shaped using a diamond burr while irrigating.

Preparation:



Activate vial by pushing plunger



Place in mixer for 10 seconds



Load vial in dispenser and dispense onto sterile surface



Use Barbara Needle or pick to control exact amount and accurate placement

fuse* GIC was designed specifically for use in the middle ear. It is a calcium fluoro-silicate base combined with polyacrylic acid to form a glass polyalkenoate cement.

Cat. #	Description
985-001	fuse 1 gram capsule
985-002	fuse cement applicator
985-003	fuse cement amalgamator

***fuse** is contraindicated for Acoustic Neuroma or Skull Base Surgery. **fuse** is not to be used in direct contact with dura.