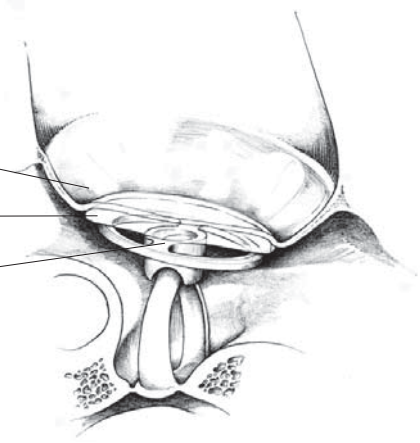


# Frisbee

Eardrum  
Cartilage Graft  
Frisbee



3.0mm diameter Titanium disc

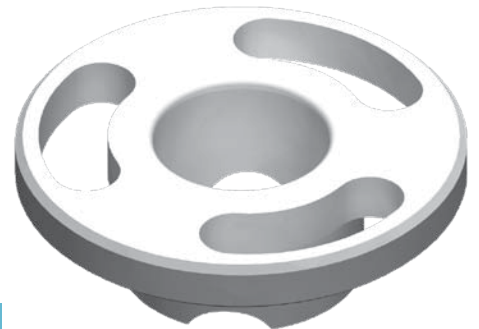
Bendable Titanium flange design allows easy angling of the prosthesis if needed



Notched center shaft for secure fit over the stapes crura

When desirable, the Titanium Frisbee can be trimmed for clearance of the promontory

**Now Available  
in HA**



Ref. #	Material	Length
750-050	Titanium	0.50mm
*750-100	Titanium	1.00mm
**750-150	Titanium	1.50mm
749-050	HA	0.50mm
749-100	HA	1.00mm
749-150	HA	1.50mm

\*Designed in conjunction with Herbert Silverstein, MD, Sarasota, FL  
\*\*Designed in conjunction with Antonio De la Cruz, MD, Los Angeles, CA



**Grace Medical**  
ENT. Redefined.

8500 Wolf Lake Drive, Suite 110 • Memphis, TN 38133 • USA Toll Free 1.866.472.2363 • [www.gracemedical.com](http://www.gracemedical.com)

LIT0024 CID2892