

SR2-10: 40 KW LACROSSE WI

Tim Gulden
NABCEP Certified Solar PV Installer™
507-312-0190
Winona Renewable Energy, LLC
<http://www.WinonaRenewableEnergy.com>



40 kW: 4 men; 3.5 days - SolarRac2

Gravel moved for Ballast Trays



Ballast trays set in row spacing



Ballast Tray Splice plates installed



All ballast trays in place



Panels attach to ballast trays



All parts pre-drilled and attached with nut/bolt/star washer for continuous grounding up to 160 kW!

SolarRac2-10

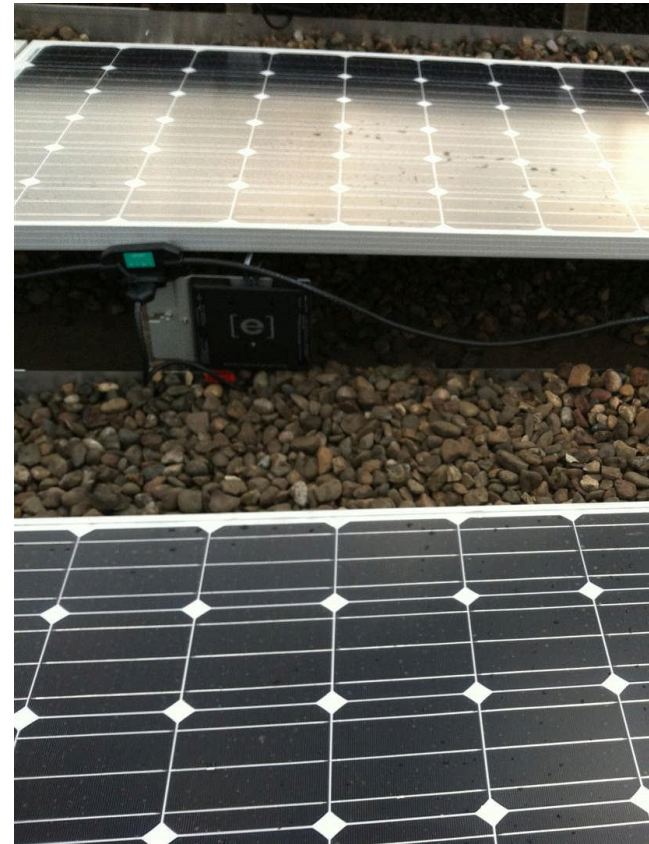


Gravel (or CMU) used as ballast



68% ballast free

Micro Inverters attach to Struts



Hard wire system through the array



68% Ballast Free



Weight distribution will be based on the first three northern rows and the first three panels on the east and west side of the array. The center of the array area is self-ballasted.

sales@pvthermalsolar.com

941-993-7678

www.solarrac2.com

Total install: 40 kW = 3.5 days; four men



Tim Gulden, 507-312-0190
Winona Renewable Energy, LLC
www.WinonaRenewableEnergy.com