

Join the Maryland Daffodil Society!

Your membership dues help support this show and other events of the society. Members receive the show schedule, MDS newsletters and updates of events within the society. Questions? julesmin@gmail.com



Become a member today.

One year individual membership \$20.00
Garden Club membership \$25.00

Additional donations are;

- Award Sponsor \$25.00
- Show sponsor \$50.00
- Show Patron \$100.00
- Show Angel \$200.00

Send to: The Maryland Daffodil Society Inc.
c/o Julie Minch
8602 Countrybrooke Way
Lutherville, MD 21093

Clip and send in-

Name _____

Address _____

Phone _____ E-mail _____



Cylburn Blooms with Daffodils

Wednesday, April 24, 2019

2:00 pm – 8:00 pm

Thursday, April 25, 2019

10:00 am – 3:00 pm

The Vollmer Center at Cylburn Arboretum
4915 Greenspring Avenue
Baltimore, MD 21209



Presented by
The Maryland Daffodil
Society



Federated Garden Clubs of Maryland
Baltimore City Recreation & Parks

Open to the Public without Charge





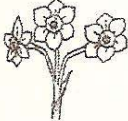



Please note several changes to this year's show schedule.

- All single stem classes are allowed two (2) entries per exhibitor. They must be different cultivars.
- A challenge class in horticulture with the 3 cultivars given to area garden clubs last fall- Class 167
- Garden Clubs are encouraged to enter a design as a club allowing several members to work together. There are only 8 pedestals for designs so it will be on a first come, first served basis. Pre-Registration required.

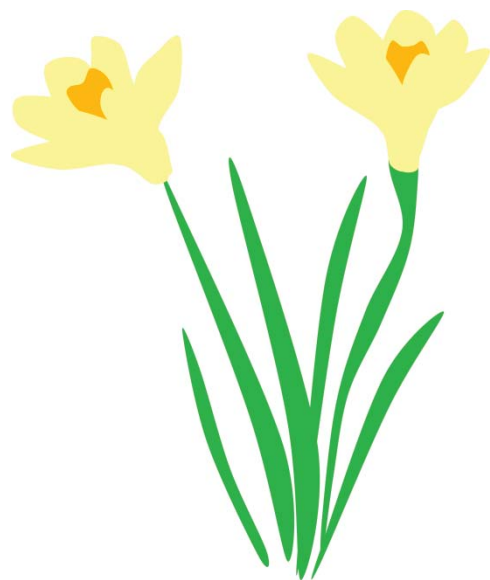
DAFFODIL CLASSIFICATION

An abbreviated list of the 13 divisions as revised by the Royal Horticultural Society, 1998

DIVISION 1	<u>TRUMPET DAFFODIL CULTIVARS</u> One flower to a stem, trumpet as long, or longer than the perianth segments (petals)	DIVISION 9	<u>POETICUS DAFFODIL CULTIVARS</u> Characteristics of the <i>N. poeticus</i> group clearly evident usually one flower to a stem, perianth segments pure white, small, flat cup, usually edged in red, but occasionally solid, fragrant
DIVISION 2	<u>LARGE-CUPPED DAFFODIL CULTIVARS</u> One flower to a stem, cup (corona) more than one-third the length of the perianth segments		
DIVISION 3	<u>SMALL-CUPPED DAFFODIL CULTIVARS</u> One flower to a stem, cup not more than one-third the length of the perianth segments	DIVISION 10	<u>BULBOCODIUM DAFFODIL CULTIVARS</u> Characteristics of Section <i>Bulbocodium</i> clearly evident: usually one flower to a stem, perianth segments insignificant compared with dominant corona, filaments and style usually curved
DIVISION 4	<u>DOUBLE DAFFODIL CULTIVARS</u> One or more flowers to a stem, with doubling of the perianth segments, or the corona, or both		
DIVISION 5	<u>TRIANDRUS DAFFODIL CULTIVARS</u> Characteristics of <i>N. triandrus</i> clearly evident: usually two or more drooping flowers to a stem, perianth reflexed	DIVISION 11	<u>SPLIT-CORONA DAFFODIL CULTIVARS</u> Corona split, usually for more than half its length
DIVISION 6	<u>CYCLAMINEUS DAFFODIL CULTIVARS</u> Characteristics of <i>N. cyclamineus</i> clearly evident: one flower to a stem, perianth segments significantly reflexed, flower at an acute angle to the stem on a very short neck		11a Collar Daffodils - The corona segments are opposite the perianth segments usually in two whorls of three
DIVISION 7	<u>JONQUILLA DAFFODIL CULTIVARS</u> Characteristics of Sections <i>Jonquilla</i> or <i>Apodanthi</i> clearly evident: usually one to five flowers to a stem, perianth segments spreading or reflexed, cup usually wider than long, fragrant		11b Papillon Daffodils - The corona segments are alternate to the perianth segments, usually in a single whorl of six
DIVISION 8	<u>TAZETTA DAFFODIL CULTIVARS</u> Characteristics of Section <i>Tazettae</i> clearly evident: usually three to twenty flowers to a stout stem, perianth segments spreading, not reflexed, usually fragrant	DIVISION 12	<u>OTHER DAFFODIL CULTIVARS</u> Cultivars which do not fit the definition of another division
			
		DIVISION 13	<u>SPECIES</u> Daffodils distinguished solely by botanical name
			

Debbie Kurz
Jane R. Lynn
Amanda Mahoney(S)
Linda Masland
Bliss McCord(P)
Meredith McDonagh (A)
Julie Minch (P)
Joan Moore
Janet Noland
Cindy & Paul O'Connor
Kathie Offutt
Maria O'Rourk
Susan Palmer (P)
Pat Parker(P)
Mary Charlotte Parr
Sue Perry
Donna Reid
Trish Reynolds
Lucy Rhame (P)

Reiko Royston
Marjorie Schiebel
Nicki Schwab (P)
Freddie Shaw
Carolyn Taylor
Mary Ann Thompson
Sue Thompson
Francis & Frank Turner
Kathleen VanSickle
Pauline Vollmer (AS)
Ginger Wallach
Sally F. Waller
Carol Warner
Kitty Washburn
Edward & Olivia Welbourn
Kathy Welsh
Hilles Whedbee (S)
Bunny Worthington (P)
Maeli Zachetti



The Maryland Daffodil Society

2018-2020 Board Members

President.....Hilles Whedbee
Vice-President.....Pat Parker
Treasurer/Membership.....Julie Minch
Secretary.....Susan Palmer
Member-at-large.....Joan Bender, Joan Moore,
Nicki Schwab, Mary Ann
Thompson, Sally Waller
Immediate Past President.....Meredith McDonagh



www.marylanddaffodil.org

Check our website for updates concerning the society. Show dates, schedules and other information will be made available on the site. Come to the fall board meeting and bulb sale held each October. This is a great opportunity to hear an interesting speaker, pick up some wonderful bulbs and get tips on planting and caring for daffodils.

www.daffodilusa.org

The American Daffodil Society website is also another website to visit. It includes tips on planting and growing daffodils, bulbs resources, and a listing of societies from all over the country.

www.daffseek.org

Check out *Daff Seek*- a wonderful resource to find the name of a specific bloom, its history, and lots of other information.

2019 Show Committee

Show Chairman: Meredith McDonagh 410-404-4164
meredy@comcast.net

Awards: Jackie Handley
Boxwood: TBA
Clerks: Carol Warner, Hilles Whedbee
Design Chairman: Freddy Shaw, 410-833-2888,
shaw.fred3737@gmail.com
Dismantling: All MDS members
Education Exhibit: Pat Parker
Hostesses: Meredith McDonagh
Judges: Anne Donnell Smith, Julie Minch
Judges/Clerks Coffee: Hilles Whedbee
Judges/Clerks Lunches: Halten GC, MDS, Nancy Johnston
Pages: Hampton GC, Mary Ellen Pleumer
Passing -Hort: Joan Bender, Nancy Johnston, Reiko
Royston, Nicki Schwab, MaryAnn
Thompson, Liz Williams
Passing- Design: Freddy Shaw
Properties: Perry J. Bolton (Dan West)
Publicity: Meredith McDonagh
Records: Muffin McAfee , Bobbie Hudson
Registration: Barbara Gould 410-821-5075,
Jane Lynn
Schedule: Julie Minch
Scoring: Frances Horich, Anne Jamison
Set Up: Woodbrooke-Murray Hill, Susan Palmer
Staging: Catonsville Garden Club, Joan Bender

ADS Membership Information

For information on membership in The American Daffodil Society,
write to: Frank Nyikos, Exec. Director, 8374 E. State Rd. 45,
Unionville, IN 47468.

Be sure to visit their website at <http://www.daffodilusa.org/>

**The Daffodil Show is made possible only by the
support of the following members:**

(AS) = Award sponsor

(S) = Show sponsor

(P) Patron sponsor

(A) Angel sponsor

**Listed below are members that have paid dues within the last
two years.**

Member Garden Clubs

Amateur Gardeners' Club(AS) Antietam Garden Club
Catonsville Garden Club Chartwell Garden Club
Crofton Village GC Friendship Garden Club
Dist III, Federated Garden of MD Garden Workshop
Garden Club of Twenty Gibson Island GC
Greenspring Valley GC Hagerstown Garden Club
Halten Garden Club (AS) Hardy Garden Club
Homeland Garden Club Monkton Garden Club
Queen Anne's Garden Club Roland Park Garden Club
St. George's Garden Club Silver Fancy Garden Club
Town & Country GC Woodbrook-Murray Hill GC

Individual MDS Members

Dee Alevizatos	Sylvia Deck
Karen Barrett	Marion DeGross
Joan Bender	Martha Gardner
Martha Best	Joan George
Perry J. Bolton (A)	Patricia Ghinger
Helen Bonsal (P)	Lucy Goelet
Elaine Borne	Barbara Gould
Diana Boyce	Margaret Smith Green (AS)
Joe Brady (AS)	Jacquelyn A. Handley(AS)
Jill Breen	Janet Hickman
Janet Brown	Frances V. Horich
Judy Bruner	Bobbie Hudson(P)
Debbie Cameron	Bob & Lina Huesmann
Mitch & Kate Carney	Anne Jamison
Don Caton	Nancy Johnston
Marie Coulter	Kay Kness

Design Classes

Cylburn Blooms with Daffodils

Class 1: Daffodils Gone Wild

4 Entries

A contemporary design, using at least three daffodils, on a free standing white pedestal 43 ½” from the ground, with an 18” round top. Pedestal may be covered by the exhibitor. To be seen from all sides.

Class Consultant:

Freddy Shaw, shaw.fred3737@gmail.com, 410-833-2888

Class 2: Prim and Proper

4 Entries

A traditional design, using at least three daffodils, on a free standing white pedestal 43 ½” from the ground, with an 18” round top. Pedestal may be covered by exhibitor. To be seen from all sides.

Class Consultant:

Freddy Shaw, shaw.fred3737@gmail.com, 410-833-2888

General Information

1. All classes are open to amateur daffodil growers.
2. All classes are open for entries **Tuesday, April 23, 3:00 to 8:00 and Wednesday, April 24, 7:00am to 10:00 am.**
3. All exhibitors must clear the floor by 10:30 am. **THIS RULE WILL BE STRICTLY ENFORCED.** Exhibitors are requested not to mist their flowers after their exhibits have been placed.
4. Exhibitors are permitted to **enter two different cultivars in each single stem class** unless otherwise stated.
5. All exhibitors must be registered and each exhibit must be accompanied by an entry card completely and clearly filled out. All information on the card pertaining to the exhibitor, including the exhibitor’s number, must be concealed during the judging. Call for your exhibitor’s number and entry cards.
Barbara Gould 410-821-5075 Pre-registration is encouraged.
6. All exhibitors are encouraged to arrange for pickup of all awards & ribbons between 3:00 & 3:15 pm on Thursday, April 25, 2019. Dismantling will begin at 3:15 pm.
7. Only one first, one second and one third ribbon will be given in each class. Honorable Mention may also be presented, if all of the above have been given. The judges may withhold any and all awards if they do not feel the exhibits are worthy. However, if a blue ribbon is given in a class eligible for an ADS award, that award must be presented. Each stem in the exhibit receiving an ADS award must score 90 or more points according to the ADS scale. The decision of the judges is final.
8. The scale of points of the American Daffodil Society shall be the standard for judging in horticulture classes. Judges of this show may not exhibit in classes that they are assigned to judge.

Rules for Horticulture

1. The exhibitor must grow all daffodils out of doors. Miniatures may be grown in protected areas.
2. Uniform containers will be provided. Boxwood provided by the committee must be used to support and stage specimens in the containers. No daffodil foliage is permitted.
3. All entries must be labeled with variety, division and color coding. Correct classification (variety, division and color coding), according to the RHS system as printed in the latest edition of *Daffodils to Show and Grow* and Daff Seek. Labeling shall be the responsibility of the exhibitor. Exhibitors may not change labeling after the judging has begun. If an error is discovered after the judging is complete, any awards will be forfeited. Note: If judges are still available, the class may be rejudged.

4. Exhibits not named or incorrectly named will not be judged.
5. Seedlings are identified by a number designation assigned by the originator. If the exhibitor is not the originator, the originator's name must be included in the labeling.
6. Miniature daffodils named in the most recent ADS Approved List of Miniatures, except as noted in the Historic section, with any official additions thereto and any named or numbered diminutive daffodil that appears graceful with all its parts in proportion may be entered. Such entries are eligible for ADS awards in the miniature section. The judges may decline to judge an exhibit containing an unapproved miniature they consider too large for these classes.
7. All collections of 5 or more stems must be exhibited with each cultivar or species in a separate container. Each stem must be correctly labeled with name, RHS division and color code.
8. Entries may be moved and classes subdivided at the discretion of the show committee.
9. Winners of the Historic single stem, vase of 3, and collection of 5 are eligible for consideration for the Gold, Mini-Gold, White, Mini-White, and Purple ribbons, in which case they are to be judged on the cultivar scale.

Horticulture Classes

Royal Horticulture Society System of Classification
Division and Color Coding authority: Daffodils to Show and Grow
Supplemented by the ADS Data Bank

Color Coding is required in all classes.

A reverse bicolor has a predominantly yellow perianth & a predominantly white cup.

Note: For the purpose of this schedule, PREDOMINANT means color in at least two adjacent zones; COLORED means any color other than white or whitish.

Sections A, B, C and D – Standard daffodils

Section A – Single stem

Section B – Three stems, one cultivar or species. (Uniformity of bloom is important.)

Section C – Five cultivars or species, one stem each

Each bloom is to be staged individually and labeled.

Section D – Single stems from small daffodil gardens

Exhibitors in this section are limited to those growing not more than 25 named cultivars or species. An exhibitor may enter up to two (2) different cultivars in each class of section D. Once an exhibitor has won the sweepstakes, The Viele Award, that exhibitor may not enter section D again.

legal manner and so noted on the 3” x 5” card placed with the exhibit.

8. Judging will begin at 11:00 AM on Wednesday, April 24th and will be judged by the National Garden Clubs Standard System of Awarding – (Handbook pp. 5 – 7) using the Scale of Points on Handbook p. 303. Awards may be withheld if not merited. Decisions of the judges are final. Judges must mark and sign entry cards of non-blue ribbon winners scoring 90 points or above.

9. The Committee will exercise care but will not be responsible for loss or damage of exhibitor's property. Personal property should be marked with the owner's name.

Design Division Awards

National Garden Clubs, Inc., (NGC) Standard System of Awarding allows only one first place blue ribbon to an exhibit (scoring 90 points or more), one second place red ribbon (85 points or more), one third place yellow ribbon (80 points or more) and one or more honorable mention white ribbons (75 points or more) as merited in each class.

Best-In-Show Award (Handbook p. 53) will be awarded to the highest scoring blue ribbon design in the Division. All Classes are eligible.

The Judging Panel may also award:

The **Malcolm W. Lowenstein Memorial Award** for the design showing the most originality or creative effort.

The **Dr. and Mrs. Stuart D.P Sunday Memorial Award** for the design exhibiting the most outstanding horticultural merit utilizing only exhibitor garden grown plant material. Mrs. E.H. Richardson donated the bowl to MDS. Please indicate if your exhibit is eligible for this award on a 3”x5” card stating: “All plant material is garden-grown by exhibitor”.

The **Mrs. Leo J. Vollmer Award** will be presented to the design demonstrating the most effective use of daffodils.

The **Jo Owen Memorial Award** will be presented to the design with the best interpretation of the class.

The **People's Choice Award** will be presented to the design favorite as voted by visitors to the Show. All design entries are eligible.

Design Division Rules

1. Clubs must pre-register with the Class Consultant and may make only one entry per class. If unable to fulfill the assignment, it is the responsibility of the club to provide a substitute and to notify the Class Consultant immediately.
2. Entries will be accepted on Tuesday, April 23rd from 3:00 to 7:00 PM and on Wednesday, April 24th from 8:00 to 10:30 AM. Entries must be passed and entry cards initialed by the Design Chairman or the Class Consultant who will check for conformance before exhibitor places the design. Design may be the work of more than one exhibitor. Designs must be maintained in show condition and no other entry substituted. Entries must be removed between 3:00 and 3:30 PM on Thursday, April 25th. No early removals please!
3. Do not leave the floor until the passing judge passes your design.
4. All designs must contain a minimum of 3 daffodils. Plant material used in the design must be listed on a 3" x 5" card placed with the exhibit. Daffodils and other plant material need not be grown by the exhibitor except in designs to be considered for the Dr. and Mrs. Stuart D.P. Sunday Memorial award which must use only plant material grown by the exhibitor. Eligibility for the Sunday Award should be so noted on the 3" x 5" card placed with the exhibit.
5. Fresh plant material may not be treated in any way. Dried plant material may be treated. No artificial flowers, foliage, branches, fruits or vegetables are permitted.
6. Accessory and featured objects, contrived forms made from real plant material and other items listed on pp. 189-190 N of the Handbook may be used except for cut fruits or cut vegetables that are prohibited.
7. Rare, threatened or endangered plants on the Maryland Department of Natural Resources list for Baltimore Co. at <http://dnr.maryland.gov/wildlife/PlantsWildlife/rte/pdfs/rtebaltco.pdf> may not be used unless grown by the exhibitor or obtained in a

SECTION	A	B	C	D
Division 1 – Trumpet Daffodils			125	135
Colored perianth, yellow trumpet	1	63		
Colored perianth, red or orange trumpet	2	64		
Colored perianth, pink in trumpet	3	65		
Reverse bicolor	4	66		
White perianth, yellow, orange or red trumpet	5	67		
White perianth, pink trumpet	6	68		
White perianth, white trumpet	7	69		
Division 2 – Large-Cupped Daffodils			126	136
Colored perianth, yellow cup	8	70		
Colored perianth, cup predominantly red or orange	9	71		
Colored perianth, cup rimmed in red or orange	10	72		
Colored perianth, pink in cup	11	73		
Reverse bicolor	12	74		
White perianth, cup predominantly yellow	13	75		
White perianth, white cup rimmed yellow	14	76		
White perianth, cup predominantly red or orange	15	77		
White perianth, cup rimmed red or orange	16	78		
White perianth, cup predominantly pink	17	79		
White perianth, cup rimmed pink	18	80		
White perianth, white cup	19	81		
Division 3 – Small-cupped Daffodils			127	137
Colored perianth, yellow or pink cup	20	82		
Colored perianth, cup predominantly red or orange	21	83		
Colored perianth, cup rimmed red or orange	22	84		
Reverse bicolor	23	85		
White perianth, cup predominantly yellow	24	86		

SECTION	A	B	C	D
Division 3 continued				
White perianth, cup rimmed yellow	25	87		
White perianth, cup predominantly red or orange	26	88		
White perianth, cup rimmed red or orange	27	89		
White perianth, pink in cup	28	90		
White perianth, white cup	29	91		
Division 4 – Double Daffodils			128	138
One bloom per stem, colored perianth, yellow or white petaloids	30	92		
One bloom per stem, colored perianth, red or orange petaloids	31	93		
One bloom per stem, white perianth, yellow, red or orange petaloids	32	94		
One bloom per stem, white perianth, pink petaloids	33	95		
One bloom per stem, white perianth, white petaloids	34	96		
Two or more blooms per stem, yellow or white perianth	35	97		
Division 5 – Triandrus Daffodils			129	139
Colored perianth	36	98		
Reverse bicolor	37	99		
White perianth	38	100		
Division 6 – Cyclamineus Daffodils			130	140
Colored perianth, yellow or pink cup	39	101		
Colored perianth, red or orange cup	40	102		
Reverse bicolor	41	103		
White perianth, yellow, red or orange cup	42	104		
White perianth, pink in cup	43	105		
White perianth, white cup	44	106		

Maryland Daffodil Society Horticultural Awards

The T. McKean-Meiere Award will be given by the daughter of Mrs. Oliver Reeder, Mr. McKean-Meiere's great-great grandniece, as a Sweepstakes prize to the winner of the most points in all horticulture classes. This is the oldest major award given for daffodils in the USA.

MDS members only are eligible to receive The Louise Hazlehurst Wharton Memorial Award given for the best American bred standard daffodil.

The Amateur Gardeners' Club will give the Joanna Lloyd Tilghman Memorial Award for the best American bred miniature daffodil.

Margaret Green will give the Aunt Betty Award to the MDS club having the GREATEST NUMBER OF INDIVIDUAL MEMBERS winning a first, second or third place ribbon in any horticulture class.

The Ethel Russell Gundry Memorial Award will be given for the greatest number of blue ribbons won in Section A by a member of the MDS; daffodils to be grown in Maryland.

The Maryland Daffodil Society will give an award to the winner of the greatest number of blue ribbons in Section B.

The Amateur Gardeners' Club will give the Isabelle Whedbee Hopkins Memorial Award as a sweepstakes prize for section C.

Mrs. Fredrick Viele will present the The Viele Award to the winner with the greatest number of points in Section D.

The Serena S. Bridges Award will be given for the best novice collection, class 156.

The Cliff Dwellers Garden Club will give the C.C. and Grace McCabe Award for the best daffodil in Section E, for novice growers.

The Erlandson Award will be given for the best white daffodil collection. Class 158

The Bruce Campbell Award will be given for the best red or orange cup collection. Class 160

The Halten Garden Club will present an award in honor of Olga Gilchrist for the best intermediate bloom in Section G.

The MDS will give an award for the best Historic Daffodil in Section J. The MDS will give an award for the best youth 3-of-a-kind in Sec.K.

The Betsy Bauer Award will be given to the best single youth bloom in Section K.

American Daffodil Society Horticultural Awards

Gold Ribbon: Best standard daffodil in show

White Ribbon: Best three stems of standard daffodils in show

Rose Ribbon: Best Standard Seedling exhibited by originator

Purple Ribbon: Best standard collection of five in show

Maroon Ribbon: Best collection of reverse bi-color daffodils,
Section H, class 162

Red-White-Blue Ribbon: Best collection in Section H, class 161

Miniature Gold Ribbon: Best miniature daffodil in show

Mini White Ribbon: Best 3 stems of miniature daffodils in show

Miniature Rose Ribbon: Best Miniature Seedling exhibited by
the originator

Lavender: Best bloom in class 194 & 195

Miniature Red-White-Blue Ribbon: Best collection in Sect. I
Class 195

Youth Best Bloom Ribbon: Best bloom in Sect. K

Youth 3-of-a-kind Ribbon: Best three stems in Section K, Class
209-210

Small Growers Ribbon: Best bloom from a small garden Sect. D

Historic Daffodil Ribbon: Best bloom historic bloom in Sect. J

Historic 3-of-a-kind Ribbon: Best three stems in Section J, Class
203-204

Historic Collection Ribbon: Best collection in Section J, Class
205

Classic Ribbon: Best standard bloom in Section F

Classic Single Stem Ribbon: Best single bloom- classes 148-149

Classic 3 Stem Ribbon: Best in Section F, class 150-151

Classic Collection Ribbon: Best collection in Section F, class 152

Intermediate Ribbon: Best single Intermediate bloom in Sect. G,
Sect. H, standard blooms in small grower & youth
sections

Best 3 Stem Intermediates: Best 3 stem in Sec. G, Class 154,167

Best 5 Stems Intermediates: Best collection in Sec. G, Class 155

Silver Ribbon: Awarded to the winner of the most blue ribbons in
horticulture

Additional Awards for specific classes:

Carey E. Quinn Medal

Marie Bozievich Ribbon

Roberta C. Watrous Ribbon

Tom D. Throckmorton Ribbon

Elise Havens Ribbon

Delia Bankhead Ribbon

SECTION	A	B	C	D
Division 7 – Jonquilla & Apodanthus			131	141
Colored perianth, yellow or pink cup	45	107		
Colored perianth, red or orange cup	46	108		
Reverse bicolor	47	109		
White perianth, yellow, red or orange cup	48	110		
White perianth, pink in cup	49	111		
White perianth, white cup	50	112		
Division 8 – Tazetta Daffodils			132	142
Colored perianth, white or colored cup	51	113		
White perianth, pink or orange in cup	52	114		
White perianth, white or yellow cup	53	115		
Division 9 – Poeticus Daffodils			133	143
White perianth, eye green	54	116		
White perianth, eye any other color	55	117		
Division 10 – Bulbocodium Daffodils	56	118	-	-
Division 11 a/b Spilt Corona Daffodils			134	144
Colored perianth, white or colored cup	57	119		
White perianth, pink in cup	58	120		
White perianth, no pink in cup	59	121		
Any cultivar, more than one bloom	60	122		
Division 12 – Miscellaneous Daffodils	61	123	-	145
Division 13 – Species, wild variants & wild hybrids	62	124	-	-

SECTION E – Novice

Novice classes are for exhibitors who have never won a blue ribbon in a show approved by the American Daffodil Society. The C.C. and Grace McCabe Award may be presented in this section. Exhibitor may make two (2) entries in each class.

Class 146 Single stem, standard

Class 147 Single stem, miniature

SECTION F – Classics

This section is opened to all standard cultivars introduced from 1940 to 1969 inclusive. All cultivars shall be labeled with name, division number and year of registration (or introduction). An exhibitor may enter two (2) different cultivars in classes 148, 149, 150 and 151. Daffodils will be judged using the standard scale.

- Class 148 Single stem, any division, with yellow/orange perianth
- Class 149 Single stem, any division, with white perianth
- Class 150 Three stems of one cultivar, any division, yellow/orange perianth
- Class 151 Three stems of one cultivar, any division, white perianth
- Class 152 Collection of 5 different cultivars

SECTION G- Intermediate

These are daffodils in Divisions 1 through 4 and 11 with a single floret whose perianth diameter is between 1.5 and 3 inches (50mm through 80mm). An exhibitor may enter two (2) different cultivars in classes 153 and 154. Intermediate daffodils may also be entered in standard classes.

- Class 153 Single Stem
- Class 154 Three stems, one cultivar
- Class 155 Collection of 5 different cultivars

SECTION H – Special Collections

All collections, unless otherwise noted, must consist of 5 standard cultivars or species, one stem each, individually labeled with name and other data required by the class. Please note Hort. Rule #7. MDS requests pre-registration for collections of 15 or more for space consideration. Call Barbara Gould 410-821-5075.

- Class 156 **Novice Collection** – a collection of 5 daffodils from at least two divisions. This class is only open to MDS members who have never won a blue ribbon in a collection class.

SECTION K – Youth

This section is for children 18 years or younger as of January 1 of current show year. An exhibitor may enter two (2) different cultivars in each single stem class of this section. The MDS hopes that any youth entering this section will have participated directly in the daffodil growing and staging process. Exhibitors must place their own blooms.

- Class 206 Single stem, standard daffodil
- Class 207 Single stem, miniature daffodil
- Class 208 Three stems, one cultivar, standard
- Class 209 Three stems, one cultivar, miniature

SECTION L – The MDS Club Collection

- Class 210 A well-balanced collection of 15 standard cultivars or species, one stem each, to be assembled and shown as a club collection. At least 3 divisions must be represented and each flower must be color-coded. Register your club with Barbara Gould 410-821-5075.

American Daffodil Society Scales of Points

Standard Daffodils		Historic Daffodils		Species Daffodils	
Condition	20	Condition	40	Condition	50
Form	25	Form	15	Form	15
Substance & Texture		Color	15	Color	10
	15	Size	10	Substance	10
Color	15	Pose	5	Texture	5
Stem/pose	15	Stem	5	Pose	5
Size	10	Substance	5	Stem	5
		Texture	5		
Total	100		100		100

For miniature daffodils, the judges will substitute form and grace for form. For vases of three of one cultivar, they may deduct up to five (5) points for lack of uniformity.

Class 197 **Roberta C. Watrous Silver Medal or Ribbon –**
Open only to members of the ADS. A collection of 12 miniature cultivars and/or species, one stem each, from at least 3 RHS divisions. This medal may be won only once in all local and regional ADS shows by an exhibitor. A former winner may exhibit in this class, but may receive only the Watrous ribbon.



SECTION J – Historic Daffodils

Classes for flowers registered prior to 1940. An exhibitor may enter up to two different cultivars in classes 198 to 205. Date of registration must be placed on the entry card. *Miniature daffodils registered prior to 1940, but removed from the ADS miniature list may be entered here. They are; W.P.Milner, Rip van Winkle, Colleen Bawn, Agnes Harvey, Rockery Beauty, Pencrebar and Cobweb.*

Class 198 Single stem, standard, Divisions 1 thru 3
Class 199 Single stem, standard, Divisions 4 thru 6
Class 200 Single stem, standard, Divisions 7 thru 8
Class 201 Single stem, standard, Divisions 9 thru 13
Class 202 Single stem, miniature
Class 203 Three stems, one cultivar, standard
Class 204 Three stems, one cultivar, miniature
Class 205 Collection of 5 different standard cultivars

Class 157 **Pink Daffodils** – A collection of 5 cultivars or species from at least 2 divisions having cups predominantly pink.

Class 158 **White Daffodils** – A collection of 5 cultivars or species from at least 2 divisions that are all white. (Green eyes accepted)

Class 159 **Rimmed Daffodils**- A collection of 5 cultivars or species from at least 2 divisions with rimmed cups of any color.

Class 160 **Red or Orange Cupped Daffodils** – A collection of 5 cultivars from at least 2 divisions and having cups predominantly red or orange.

Class 161 **ADS Red-White-Blue Ribbon for American Bred Daffodils** – A collection of 5 standard cultivars of American breeding or origin, any divisions. Hybridizer’s name MUST appear on the label except seedlings shown by the originator.

Class 162 **ADS Maroon Ribbon for Reverse Bicolor Daffodils** – A collection of 5 standard cultivars or species with perianth predominately yellow & cup predominately white.

Class 163 **Marie Bozievich Ribbon Collection** – An exhibit of 12 standard cultivars or species, one stem each, representing not less than 4 divisions.

Class 164 **Elise Havens Collection** – A collection of 12 standard cultivars, one stem each, representing at least 3 divisions from RHS divisions 5 through 10.

Class 165 **Dr. Tom D. Throckmorton Collection** – A collection of 15 standard cultivars or species, one stem each, from 15 different RHS classifications, each labeled with name, division and color code.

Class 166

Carey E. Quinn Silver Medal or Ribbon – A collection of 24 labeled cultivars or species, one stem each, representing not fewer than 5 divisions. Open only to ADS members. This medal may be won only once in all local and regional ADS shows by an exhibitor. A former winner may exhibit in this class but may receive only the Quinn Ribbon.

Challenge Class

Class 167

MDS Challenge Class- A single stem from the bulbs given to garden club members last fall may be entered in this class. The cultivars are: Pipit, Salome and Tahiti. Garden clubs members may enter one of each cultivar.



Photo by J. Minch

SECTION I – Miniature Daffodils

Cultivars or species named in the most recent ADS approved list of miniatures plus miniature seedlings, which will be placed in divisions to which the originator has decided they properly belong. Each exhibitor may enter up to two (2) different cultivars or species in the single stem and three stem classes.

Division	Type	Class	Class
		Single Stem	3 stems, 1 cultivar
Division 1	Trumpets	168	181
Division 2	Large Cup	169	182
Division 3	Small Cup	170	183
Division 4	Doubles	171	184
Division 5	Triandrus	172	185
Division 6	Cyclamineus	173	186
Division 7	Jonquilla	174	187
Division 8	Tazetta	175	188
Division 9	Poeticus	176	189
Division 10	Bulbocodium	177	190
Division 11	Split Corona	178	191
Division 12	Miscellaneous	179	192
Division 13	Species, wild hybrids	180	193

Class 194 **ADS Lavender Ribbon Collection** – A collection of 5 cultivars or species from the most recent ADS approved list or seedlings.

Class 195 **ADS Miniature Red-White-Blue Ribbon for Miniature American Bred Daffodils** – A collection of 5 American bred miniature cultivars or miniature candidates, any divisions. Hybridizer’s name MUST appear on label except seedlings shown by originator. Eligible for the Lavender ribbon.

Class 196 **Bankhead Ribbon** – A collection of 9 miniature cultivars and/or species, one stem each from at least 3 RHS divisions.