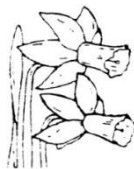


The 97th Annual Maryland Daffodil Society Show



20/20 Seeing Clearly



Wednesday, April 22, 2020

2:00 pm – 8:00 pm

Thursday, April 23, 2020

10:00 am – 3:00 pm

The Vollmer Center at Cylburn Arboretum
4915 Greenspring Avenue
Baltimore, MD 21209



Presented by
The Maryland Daffodil Society
Federated Garden Clubs of Maryland
Baltimore City Recreation & Parks

Open to the Public without Charge



BALTIMORE CITY
RECREATION & PARKS

Please note changes to this year's show schedule.

- All single stem classes are allowed two (2) entries per exhibitor. They must be different cultivars.
- A challenge class in horticulture with the 3 cultivars given to area garden clubs in 2018- Class 167
- We will have photography classes this year. Send in your photographs to Loan Tran.

The Maryland Daffodil Society

2018-2020 Board Members

President.....	Hilles Whedbee
Vice-President.....	Pat Parker
Treasurer/Membership.....	Julie Minch
Secretary.....	Susan Palmer
Member-at-large.....	Joan Bender, Joan Moore, Nicki Schwab, Mary Ann Thompson, Sally Waller
Immediate Past President.....	Meredith McDonagh



www.marylanddaffodil.org

Check our website for updates concerning the society. Show dates, schedules and other information will be made available on the site. Come to the fall board meeting and bulb sale held each October. This is a great opportunity to hear an interesting speaker, pick up some wonderful bulbs and get tips on planting and caring for daffodils.

www.daffodilusa.org

The American Daffodil Society website is also another website to visit. It includes tips on planting and growing daffodils, bulbs resources, and a listing of societies from all over the country.

www.daffseek.org

Check out *Daff Seek*- a wonderful resource to find the name of a specific bloom, its history, and lots of other information.

2020 Show Committee

Show Chairman: Meredith McDonagh 410-404-4164
meredy@comcast.net

Photography inquiries Hilles Whedbee 443-691-4245

Awards:	Jackie Handley
Boxwood:	Jan Brown
Clerks:	Carol Warner, Hilles Whedbee
Design Chairman:	Susan Palmer
Design Judges Chmn:	Jackie Handley
Dismantling:	All MDS members
Education Exhibit:	Pat Parker
Hostesses:	Meredith McDonagh
Judges:	Anne Donnell Smith, Julie Minch
Judges/Clerks Coffee:	Hilles Whedbee
Judges/Clerks Lunches:	Halten GC, MDS, Nancy Johnston
Pages:	TBD
Passing -Hort:	Joan Bender, Nancy Johnston, Reiko Royston, Nicki Schwab, MaryAnn Thompson, Liz Williams
Photography:	Hilles Whedbee & Loan Tran
Properties:	Perry J. Bolton (Dan West)
Publicity:	Meredith McDonagh
Records:	Muffin McAfee
Registration:	Sherry Jordan 443-668-6356, Jane Lynn, & Gretchen Sarkin
Schedule:	Julie Minch
Scoring:	Frances Horich, Anne Jamison
Set Up:	Woodbrook-Murray Hill Garden Club
Staging:	Catonsville Garden Club, Joan Bender

ADS Membership Information

For information on membership in The American Daffodil Society, write to: Frank Nyikos, Exec. Director, 8374 E. State Rd. 45, Unionville, IN 47468.

Be sure to visit their website at <http://www.daffodilusa.org/>

General Information

1. All classes are open to amateur daffodil growers.
2. All classes are open for entries **Tuesday, April 21, 3:00PM to 8:00PM and Wednesday, April 22, 7:00AM to 10:00 AM.**
3. All exhibitors must clear the floor by 10:30 am. **THIS RULE WILL BE STRICTLY ENFORCED.** Exhibitors are requested not to mist their flowers after their exhibits have been placed.
4. Exhibitors are permitted to **enter two different cultivars in each single stem class** unless otherwise stated.
5. All exhibitors must be registered and each exhibit must be accompanied by an entry card completely and clearly filled out. All information on the card pertaining to the exhibitor, including the exhibitor's number, must be concealed during the judging. Call for your exhibitor's number and entry cards.
Sherry Jordan 443-668-6356 Pre-registration is encouraged.
6. All exhibitors are encouraged to arrange for pickup of all awards & ribbons between 3:00 & 3:15 pm on Thursday, April 23, 2020. Dismantling will begin at 3:15 pm.
7. Only one first, one second and one third ribbon will be given in each class. Honorable Mention may also be presented, if all of the above have been given. The judges may withhold any and all awards if they do not feel the exhibits are worthy. However, if a blue ribbon is given in a class eligible for an ADS award, that award must be presented. Each stem in the exhibit receiving an ADS award must score 90 or more points according to the ADS scale. The decision of the judges is final.
8. The scale of points of the American Daffodil Society shall be the standard for judging in horticulture classes. Judges of this show may not exhibit in classes that they are assigned to judge.

Rules for Horticulture

1. The exhibitor must grow all daffodils out of doors. Miniatures may be grown in protected areas.
2. Uniform containers will be provided. Boxwood provided by the committee must be used to support and stage specimens in the containers. No daffodil foliage is permitted.
3. All entries must be labeled with variety, division and color coding. Correct classification (variety, division and color coding), according to the latest edition of *Daffodils to Show and Grow* and supplemented by the ADS electronic database daffseek.org. Labeling shall be the responsibility of the exhibitor. Exhibitors may not change labeling after the judging has begun. If an error is discovered after the judging is complete, any awards will be forfeited. Note: If judges are still available, the class may be rejudged.

4. Exhibits not named or incorrectly named will not be judged.
5. Seedlings are identified by a number designation assigned by the originator. If the exhibitor is not the originator, the originator's name must be included in the labeling.
6. Miniature daffodils may be shown only in classes for miniatures. A miniature daffodil is any cultivar on the current ADS approved List of Miniature Cultivars. Also, any named, numbered, or species daffodil which appears graceful, with all parts proportionally small, may be exhibited in the Miniature Classes, and is eligible for all ADS Miniature awards, except that only numbered seedlings shown by the originator shall be eligible for the ADS Miniature Rose Ribbon. A guideline when judging miniatures is that a single floreted cultivar normally possesses a flower less than 50 mm (1.97") in a natural spread. mass is 72mm (2.83") in natural spread. For multi-floreted miniature daffodil, the guideline measurement for the floral mass is 72mm (2.83") in natural spread. The Judges may decline to judge any exhibit exceeding these measurements at the time of judging, or penalize as they find appropriate.
7. All collections of 5 or more stems must be exhibited with each cultivar or species in a separate container. Each stem must be correctly labeled with name, RHS division and color code.
8. Entries may be moved and classes subdivided at the discretion of the show committee.
9. Winners of the Historic single stem, vase of 3, and collection of 5 are eligible for consideration for the Gold, Mini-Gold, White, Mini-White, and Purple ribbons, in which case they are to be judged on the cultivar scale.

Horticulture Classes

Royal Horticulture Society System of Classification

Division and Color Coding authority: Daffodils to Show and Grow

Supplemented by the ADS database daffseek.org

Color Coding is required in all classes.

A reverse bicolor has a predominantly yellow perianth & a predominantly white cup.

Note: For the purpose of this schedule, PREDOMINANT means color in at least two adjacent zones; COLORED means any color other than white or whitish.

Sections A, B, C and D – Standard daffodils

Section A – Single stem

Section B – Three stems, one cultivar or species. (Uniformity of bloom is important.)

Section C – Five cultivars or species, one stem each

Each bloom is to be staged individually and labeled.

Section D – Single stems from small daffodil gardens

Exhibitors in this section are limited to those growing not more than 25 named cultivars or species. An exhibitor may enter up to two (2) different cultivars in each class of section D. Once an exhibitor has won the sweepstakes, The Viele Award, that exhibitor may not enter section D again.

SECTION	A	B	C	D
Division 1 – Trumpet Daffodils			125	135
Colored perianth, yellow trumpet	1	63		
Colored perianth, red or orange trumpet	2	64		
Colored perianth, pink in trumpet	3	65		
Reverse bicolor	4	66		
White perianth, yellow, orange or red trumpet	5	67		
White perianth, pink trumpet	6	68		
White perianth, white trumpet	7	69		
Division 2 – Large-Cupped Daffodils			126	136
Colored perianth, yellow cup	8	70		
Colored perianth, cup predominantly red or orange	9	71		
Colored perianth, cup rimmed in red or orange	10	72		
Colored perianth, pink in cup	11	73		
Reverse bicolor	12	74		
White perianth, cup predominantly yellow	13	75		
White perianth, white cup rimmed yellow	14	76		
White perianth, cup predominantly red or orange	15	77		
White perianth, cup rimmed red or orange	16	78		
White perianth, cup predominantly pink	17	79		
White perianth, cup rimmed pink	18	80		
White perianth, white cup	19	81		

SECTION	A	B	C	D
Division 3 – Small-cupped Daffodils			127	137
Colored perianth, yellow or pink cup	20	82		
Colored perianth, cup predominantly red or orange	21	83		
Colored perianth, cup rimmed red or orange	22	84		
Reverse bicolor	23	85		
White perianth, cup predominantly yellow	24	86		
Division 3 continued				
White perianth, cup rimmed yellow	25	87		
White perianth, cup predominantly red or orange	26	88		
White perianth, cup rimmed red or orange	27	89		
White perianth, pink in cup	28	90		
White perianth, white cup	29	91		
Division 4 – Double Daffodils			128	138
One bloom per stem, colored perianth, yellow or white petaloids	30	92		
One bloom per stem, colored perianth, red or orange petaloids	31	93		
One bloom per stem, white perianth, yellow, red or orange petaloids	32	94		
One bloom per stem, white perianth, pink petaloids	33	95		
One bloom per stem, white perianth, white petaloids	34	96		
Two or more blooms per stem, yellow or white perianth	35	97		
Division 5 – Triandrus Daffodils			129	139
Colored perianth	36	98		
Reverse bicolor	37	99		
White perianth	38	100		
Division 6 – Cyclamineus Daffodils			130	140
Colored perianth, yellow or pink cup	39	101		

SECTION	A	B	C	D
Colored perianth, red or orange cup	40	102		
Reverse bicolor	41	103		
White perianth, yellow, red or orange cup	42	104		
White perianth, pink in cup	43	105		
White perianth, white cup	44	106		
Division 7 – Jonquilla & Apodanthus			131	141
Colored perianth, yellow or pink cup	45	107		
Colored perianth, red or orange cup	46	108		
Reverse bicolor	47	109		
White perianth, yellow, red or orange cup	48	110		
White perianth, pink in cup	49	111		
White perianth, white cup	50	112		
Division 8 – Tazetta Daffodils			132	142
Colored perianth, white or colored cup	51	113		
White perianth, pink or orange in cup	52	114		
White perianth, white or yellow cup	53	115		
Division 9 – Poeticus Daffodils			133	143
White perianth, eye green	54	116		
White perianth, eye any other color	55	117		
Division 10 – Bulbocodium Daffodils	56	118	-	-
Division 11 a/b Spilt Corona Daffodils			134	144
Colored perianth, white or colored cup	57	119		
White perianth, pink in cup	58	120		
White perianth, no pink in cup	59	121		
Any cultivar, more than one bloom	60	122		
Division 12 – Miscellaneous Daffodils	61	123	-	145
Division 13 – Species, wild variants & wild hybrids	62	124	-	-

SECTION E – Novice

Novice classes are for exhibitors who have never won a blue ribbon in a show approved by the American Daffodil Society. The C.C. and Grace McCabe Award may be presented in this section. Exhibitor may make two (2) entries in each class.

Class 146 Single stem, standard

Class 147 Single stem, miniature

SECTION F – Classics

This section is opened to all standard cultivars introduced from 1940 to 1969 inclusive. All cultivars shall be labeled with name, division number and year of registration (or introduction). An exhibitor may enter two (2) different cultivars in classes 148, 149, 150 and 151. Daffodils will be judged using the standard scale.

Class 148 Single stem, any division, with yellow/orange perianth

Class 149 Single stem, any division, with white perianth

Class 150 Three stems of one cultivar, any division, yellow/orange perianth

Class 151 Three stems of one cultivar, any division, white perianth

Class 152 Collection of 5 different cultivars

SECTION G- Intermediate

These are daffodils in Divisions 1 through 4 and 11 with a single floret whose perianth diameter is between 1.5 and 3 inches (50mm through 80mm). An exhibitor may enter two (2) different cultivars in classes 153 and 154. Intermediate daffodils may also be entered in standard classes.

Class 153 Single Stem

Class 154 Three stems, one cultivar

Class 155 Collection of 5 different cultivars

SECTION H – Special Collections

All collections, unless otherwise noted, must consist of 5 standard cultivars or species, one stem each, individually labeled with name and other data required by the class. Please note Hort. Rule #7. MDS requests pre-registration for collections of 15 or more for space consideration. Call Sherry Jordan **443-668-6356**.

- Class 156 **Novice Collection** – a collection of 5 daffodils from at least two divisions. This class is only open to MDS members who have never won a blue ribbon in a collection class.
- Class 157 **Pink Daffodils** – A collection of 5 cultivars or species from at least 2 divisions having cups predominantly pink.
- Class 158 **White Daffodils** – A collection of 5 cultivars or species from at least 2 divisions that are all white. (Green eyes accepted)
- Class 159 **Rimmed Daffodils**- A collection of 5 cultivars or species from at least 2 divisions with rimmed cups of any color.
- Class 160 **Red or Orange Cupped Daffodils** – A collection of 5 cultivars from at least 2 divisions and having cups predominantly red or orange.
- Class 161 **ADS Red-White-Blue Ribbon for American Bred Daffodils** – A collection of 5 standard cultivars of American breeding or origin, any divisions. Hybridizer's name **MUST** appear on the label except seedlings shown by the originator.
- Class 162 **ADS Maroon Ribbon for Reverse Bicolor Daffodils** – A collection of 5 standard cultivars or species with perianth predominately yellow & cup predominately white.
- Class 163 **Marie Bozievich Ribbon Collection** – An exhibit of 12 standard cultivars or species, one stem each, representing not less than 4 divisions.

- Class 164 **Elise Havens Collection** – A collection of 12 standard cultivars, one stem each, representing at least 3 divisions from RHS divisions 5 through 10.
- Class 165 **Dr. Tom D. Throckmorton Collection** – A collection of 15 standard cultivars or species, one stem each, from 15 different RHS classifications, each labeled with name, division and color code.
- Class 166 **Carey E. Quinn Silver Medal or Ribbon** – A collection of 24 labeled cultivars or species, one stem each, representing not fewer than 5 divisions. Open only to ADS members. This medal may be won only once in all local and regional ADS shows by an exhibitor. A former winner may exhibit in this class but may receive only the Quinn Ribbon.

Challenge Class

- Class 167 **MDS Challenge Class-** A single stem from the bulbs given to garden club members in the fall of 2018 may be entered in this class. The cultivars are: Pipit, Salome and Tahiti. Garden club members may enter one of each cultivar.

SECTION I – Miniature Daffodils

Cultivars or species named in the most recent ADS approved list of miniatures plus miniature seedlings, which will be placed in divisions to which the originator has decided they properly belong. See hort. Rule #6 for more details. Each exhibitor may enter up to two (2) different cultivars or species in the single stem and three stem classes.

		Class	Class
Division	Type	Single Stem	3 stems, 1 cultivar
Division 1	Trumpets	168	181
Division 2	Large Cup	169	182
Division 3	Small Cup	170	183
Division 4	Doubles	171	184
Division 5	Triandrus	172	185
Division 6	Cyclamineus	173	186
Division 7	Jonquilla	174	187
Division 8	Tazetta	175	188
Division 9	Poeticus	176	189
Division 10	Bulbocodium	177	190
Division 11	Split Corona	178	191
Division 12	Miscellaneous	179	192
Division 13	Species, wild hybrids	180	193

Class 194 **ADS Lavender Ribbon Collection** – A collection of 5 cultivars or species from the most recent ADS approved list or seedlings.

Class 195 **ADS Miniature Red-White-Blue Ribbon for Miniature American Bred Daffodils** – A collection of 5 American bred miniature cultivars or miniature candidates, any divisions. Hybridizer's name **MUST** appear on label except seedlings shown by originator. Eligible for the Lavender ribbon.

Class 196 **Bankhead Ribbon** – A collection of 9 miniature cultivars and/or species, one stem each from at least 3 RHS divisions.

Class 197 **Roberta C. Watrous Silver Medal or Ribbon** – Open only to members of the ADS. A collection of 12 miniature cultivars and/or species, one stem each, from at least 3 RHS divisions. This medal may be won only once in all local and regional ADS shows by an exhibitor. A former winner may exhibit in this class, but may receive only the Watrous ribbon.

SECTION J – Historic Daffodils

Classes for flowers registered prior to 1940. An exhibitor may enter up to two different cultivars in classes 198 to 204. Date of registration must be placed on the entry card.

Class 198	Single stem, standard, Divisions 1 thru 3
Class 199	Single stem, standard, Divisions 4 thru 6
Class 200	Single stem, standard, Divisions 7 thru 8
Class 201	Single stem, standard, Divisions 9 thru 13
Class 202	Single stem, miniature
Class 203	Three stems, one cultivar, standard
Class 204	Three stems, one cultivar, miniature
Class 205	Collection of 5 different standard cultivars

SECTION K – Youth

This section is for children 18 years or younger as of January 1 of current show year. An exhibitor may enter two (2) different cultivars in each single stem class of this section. The MDS hopes that any youth entering this section will have participated directly in the daffodil growing and staging process. Exhibitors must place their own blooms.

Class 206	Single stem, standard daffodil
Class 207	Single stem, miniature daffodil
Class 208	Three stems, one cultivar, standard
Class 209	Three stems, one cultivar, miniature

SECTION L – The MDS Club Collection

Class 210	A well-balanced collection of 15 standard cultivars or species, one stem each, to be assembled and shown as a club collection. At least 3 divisions must be represented and each flower must be color-coded. Register your club with Sherry Jordan.
-----------	---

American Daffodil Society Scales of Points

Standard Daffodils		Historic Daffodils		Species Daffodils	
Condition	20	Condition	40	Condition	50
Form	25	Form	15	Form	15
Substance & Texture		Color	15	Color	10
	15	Size	10	Substance	10
Color	15	Pose	5	Texture	5
Stem/pose	15	Stem	5	Pose	5
Size	10	Substance	5	Stem	5
		Texture	5		
Total	100		100		100

For miniature daffodils, the judges will substitute form and grace for form. For vases of three of one cultivar, they may deduct up to five (5) points for lack of uniformity.



American Daffodil Society Horticultural Awards

Gold Ribbon: Best standard daffodil in show

White Ribbon: Best three stems of a standard daffodil in show

Rose Ribbon: Best Standard Seedling exhibited by originator

Purple Ribbon: Best collection of five standard daffodils in show

Maroon Ribbon: Best collection of a reverse bi-color daffodils,
Section H, class 162

Red-White-Blue Ribbon: Best collection in Section H, class 161

Miniature Gold Ribbon: Best miniature daffodil in show

Mini White Ribbon: Best 3 stems of a miniature daffodil in show

Miniature Rose Ribbon: Best Miniature Seedling exhibited by
the originator

Lavender: Best collection of five miniature daffodils in show

Miniature Red-White-Blue Ribbon: Best collection in Sect. I
Class 195

Youth Best Bloom Ribbon: Best bloom in Sect. K

Youth 3-of-a-kind Ribbon: Best three stems in Section K, Class
208-209

Small Growers Ribbon: Best bloom from a small garden Sect. D

Historic Daffodil Ribbon: Best historic bloom in Sect. J

Historic 3-of-a-kind Ribbon: Best three stems in Section J, Class
203-204

Historic Collection Ribbon: Best collection in Section J, Class
205

Classic Ribbon: Best standard bloom in Section F

Classic Single Stem Ribbon: Best single bloom- classes 148-149

Classic 3 Stem Ribbon: Best in Section F, class 150-151

Classic Collection Ribbon: Best collection in Section F, class 152

Intermediate Ribbon: Best single Intermediate bloom from all
sections in the show for intermediate and standard
blooms

Best 3 Stem Intermediates: Best 3 stem in Sec. G, Class 154

Best 5 Stems Intermediates: Best collection in Sec. G, Class 155

Silver Ribbon: Awarded to the winner of the most blue ribbons in
horticulture

Additional Awards for specific classes:

Carey E. Quinn Medal

Marie Bozievich Ribbon

Roberta C. Watrous Ribbon

Tom D. Throckmorton Ribbon

Elise Havens Ribbon

Delia Bankhead Ribbon

Maryland Daffodil Society Horticultural Awards

The T. McKean-Meiere Award will be given by the daughter of Mrs. Oliver Reeder, Mr. McKean-Meiere's great-great grandniece, as a Sweepstakes prize to the winner of the most points in all horticulture classes. This is the oldest major award given for daffodils in the USA.

The MDS will give The Louise Hazlehurst Wharton Memorial Award given for the best American bred standard daffodil.

The Amateur Gardeners' Club will give the Joanna Lloyd Tilghman Memorial Award for the best American bred miniature daffodil.

The Aunt Betty Memorial Award will be given by the family of Elizabeth Culver Smith to the MDS club having the GREATEST NUMBER OF INDIVIDUAL MEMBERS winning a first, second or third place ribbon in any horticulture class.

The Ethel Russell Gundry Memorial Award will be given for the greatest number of blue ribbons won in Section A by a member of the MDS; daffodils to be grown in Maryland.

The Maryland Daffodil Society will give an award to the winner of the greatest number of blue ribbons in Section B.

The Amateur Gardeners' Club will give the Isabelle Whedbee Hopkins Memorial Award Sweepstakes Prize for the most points in Section C.

The Hardy Garden Club will present the The Jane Viele Memorial Award to the exhibitor with the greatest number of points in Section D.

The Serena S. Bridges Memorial Award will be given for the best Novice Collection, Class 156.

The Cliff Dwellers Garden Club will give the C.C. and Grace McCabe Award for the best daffodil in Section E, classes for novice growers.

The Halten Garden Club will present an award in memory of Olga Gilchrist for the best intermediate bloom in Section G.

The Betsy Bauer Award will be given to the best single youth bloom in Section K.

A Maryland Daffodil Society Show Angels Award will be given for the best 3 stem in Section K, classes for youth.

A Maryland Daffodil Society Show Angels Award will be given for the best Historic Daffodil in Section J.

Design Division

Chairman: Susan Palmer - susmpalmer@aol.com

Judges Chairman: Jackie Handley - jhandley09@aol.com

Rules

1. National Garden Club (NGC) Policies and Guidelines for Design are printed in Chapter 7, p. 79 - 80 of the 2017 *Handbook for Flower Shows* (HB).
2. Design classes are open to any adult exhibitor. Each exhibitor is limited to one entry per class. Advance registration with the Class Consultant is required by April 6, 2020. If designer is unable to fulfill her/his assignment, it is designer's responsibility to find a replacement and notify Consultant immediately. Entries will be accepted on Tuesday April 21 from 3 to 8 PM, and Wednesday April 22 from 7 to 10 AM. Before exhibitor leaves the show area, entries must be passed and entry cards initialed by the Design Chairman or Class Consultant, who will check for conformance. Final determination for conformance is the judges' responsibility. Exhibits may not be removed before Thursday April 23 at 3 PM and must be removed by 3:30 PM. No early removals, please!
3. No artificial flowers, foliage, fruits or vegetables are allowed. Fresh uncut fruit or vegetables are permitted; other foods and open beverages are not permitted. Other plant and non-plant material permitted and not permitted are listed in the HB p. 80-81.
4. Fresh plant material may never be treated in any manner; dried plant material may be treated. Rare, threatened or endangered plants on the Maryland Department of Natural Resources list at http://dnr.maryland.gov/wildlife/Documents/rte_Plant_List.pdf may not be used unless grown by exhibitor or obtained in a legal manner and so noted on a 3 x 5" card placed with the exhibit. Invasive terrestrial plants as determined by the Maryland Invasive Species Council may not be used; see <http://mdinvasives.org/species-of-concern/terrestrial-plants/>. Plant material need not be grown by the exhibitor and may be obtained from any legal source.
5. All designs must contain a minimum of 3 daffodils. All plant material used in design must be identified on a white, 3 x 5" card provided by the exhibitor and placed with the entry card. If a design is eligible for the Dr. and Mrs. Stuart P. Sunday Award, the exhibitor must so indicate by writing "All plant material is garden-grown by the exhibitor" on the card.
6. The designer has the freedom to choose Traditional or Creative

Style with any design listed, unless restricted by the Schedule.

7. Exhibitor is required to conform to the stated description and limitations of the Design Type, if named in the class. Rules for Design Types, Advanced Designs, Table Designs and Table Appointments are printed in the HB, Chapter 7.

8. Design must be the work of one individual, whose name is on the entry card. Designer is on her/his honor that the design being entered has not been previously entered or judged in an NGC Flower Show.

9. Judging will begin at 11 AM on Wednesday April 22. Decisions of the judges are final; awards may be withheld if not merited. The Design Chairman, Judges Chairman and/or Consultants will be available for possible consultation. They and the judges and clerks are the only personnel allowed on the show floor during judging. The Scale of Points for Design is printed in the HB, Chapter 14, p. 130.

10. The Show Committee will strive to assure the safety of all items after arrival and placement, but is not responsible for loss or damage to exhibitor. Please mark properties inconspicuously with name of exhibitor.

Design Classes - "20/20 Vision"

Eligible for Best-in-Show Award

Class 1. "Bird's-eye View". A Petite design (HB p. 73) not exceeding 12" in height, width or depth, staged on a tabletop on a white Z-shaped stand 11-1/2" high with a 9" square top. Design will be viewed from all sides. 4 entries. Consultant: Kathleen Brosi
410-532-1876; kathleenbrosi@gmail.com

Class 2. "Vision of Loveliness". Designer's choice of an American Traditional Line-Mass (HB p. 71) or a Creative Line-Mass (HB p. 74) design, staged on a white pedestal 43" high with an 18" diameter top. Pedestals will be placed against a neutral-colored wall. 4 entries. Consultant: Katie Peddy
410-628-4938; richfieldfarm@gmail.com

Class 3. "Double Vision". A Creative design (HB p. 71), staged on a table in a space 32" W x 30" D. Exhibitor is required to provide a staging panel (HB p. 36) with support mechanics. 4 entries. Consultant: Nancy Johnston
410-252-5986; njohnston711@yahoo.com

Design Awards

National Garden Clubs, Inc., (NGC) Standard System of Awarding allows only one first place blue ribbon to an exhibit (scoring 90 points or more), one second place red ribbon (85 points or more), one third place yellow ribbon (80 points or more) and one or more honorable mention white ribbons (75 points or more) as merited in each class. All non-blue ribbon winners scoring 90 points or above must be so designated on the entry card, signed and dated by an NGC Accredited Judge on the judging panel.

Best-In-Show Award (HB p. 45) may be awarded to the highest scoring blue ribbon design in the Division.

The **Malcolm W. Lowenstein Memorial Award** may be awarded to the design showing the most originality or creative effort.

The **Dr. and Mrs. Stuart D.P Sunday Memorial Award** may be awarded to the design exhibiting the most outstanding horticultural merit utilizing only exhibitor garden grown plant material. Mrs. E.H. Richardson donated the bowl to MDS. If a design is eligible for the award, the exhibitor must so indicate by writing "All plant material is garden-grown by the exhibitor" on the plant identification card placed with the exhibit.

The **Mrs. Leo J. Vollmer Award** may be presented to the design demonstrating the most effective use of daffodils.

The **Jo Owen Memorial Award** may be presented to the design with the best interpretation of the class.

The **People's Choice Award** may be presented to the design favorite as voted by visitors to the Show.

Photography Division

Rules

1. All exhibitors should register in advance by contacting **Photography Co Chair, Loan Tran; *thanolan@gmail.com* or 410-744-0945.**

Registration Deadline is Friday, April 17, 2020.

We encourage you to register early. There is no entry fee and exhibitors are not required to be members of the MDS. You will receive email conformation of your registration. The photography show is open to the public.

2. All classes are open to color or black and white photographs and will be subdivided as needed. Entries must contain images of one or more daffodils as required by the class. **An exhibitor may enter up to 1 photo per class and up to 5 photographs in the show.**
3. Photographs that have previously won a first place award at an ADS National Show may not be entered in the competition.
4. **All photography entries must be the work of the exhibitor.** Any changes to the original image must also be the work of the exhibitor; this includes manipulation, cropping, & enhancing for color/clarity. The finish may be glossy or matte.
5. **All photography entries must be matted in black with a perimeter measurement no greater than 52 inches.** Please do not use glass or framing. Printing and matting may be done professionally.
6. Entry Cards will be emailed along with your registration confirmation. **The entry cards must be completed for each photo. In addition, the following information must be on the back of each photograph in the lower left hand corner: name, address, phone number, email address, & class entered. Please indicate the TOP of the photograph.**
7. The staging background color will be either grey or royal blue.
8. The recommended scale of points by which the classes are to be judged is as follows:

Creativity	25
Composition	25
Craft	25
Content	<u>25</u>
Total	100
9. First, Second, Third and Honorable Mention ribbons will be presented in each class. A Best- in- Show ribbon will also be awarded.

10. **Exhibitors may send entries to the Co-Chair, Loan Tran, 436 Chalfonte Drive, Catonsville, MD 21228. Entries MUST be received no later than April 17, 2020.**
11. **If exhibitors would like to have their photograph returned by mail, a self-addressed, postage paid, padded envelope must be provided along with your entry (s). Please be sure to have the proper amount of postage or your picture will not be returned. Remember to weigh both your entry and return envelope for proper postage.** All other entries must be picked up by the exhibitor between 3:00pm and 4:00pm at the close of the Show Thursday, April 23, 2020 or they will become the property of the MDS.

Photography Classes

“20/20 Seeing Clearly”

All Classes Eligible for Best-in-Show

Class I – “Sight for Sore Eyes”

A landscape or garden featuring daffodils.

Class II – “Apple of My Eye”

A close-up* of a single daffodil bloom.

Class III – “In My Mind’s Eye”

An abstract or manipulated photograph featuring daffodils.

Class IV – “All Eyes are on You”

A close-up* of two or more daffodils.

*Close-up: a photo taken close to the subject or with a long focal-length lens to permit a close and detailed view of the object. The object fills most of the frame.

The Daffodil Show is made possible by the support of the following members:

(AS) = Award sponsor

(SS) = Show sponsor

(P) Patron sponsor

(A) Angel sponsor

Listed below are members that have paid dues within the last two years.

Member Garden Clubs

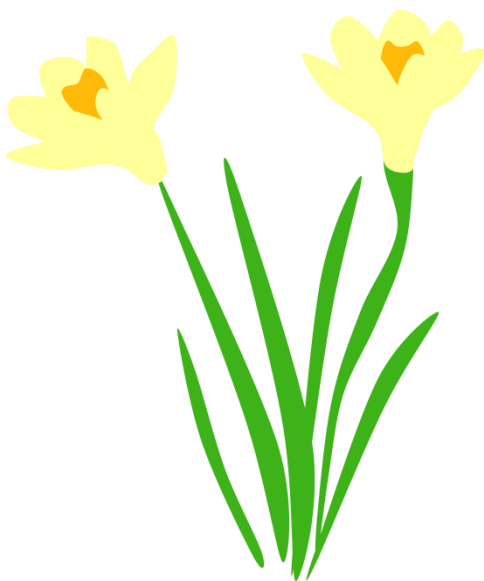
Amateur Gardeners' Club(AS)	Antietam Garden Club
Bolton Hill Garden Club	Catonsville Garden Club
Chartwell Garden Club	Cliff Dwellers GC(AS)
Crofton Village GC	Dorchester Garden Club
Federated Garden Clubs of Maryland, Inc.	
For-Win-Ash Garden Club	Franklin Garden Club
Friendship Garden Club	Garden Workshop
Garden Club of Twenty	Gibson Island Garden Club
Greenspring Valley GC	Hagerstown Garden Club
Halten Garden Club (AS)	Hardy Garden Club(AS)
Homeland Garden Club	Lutherville Garden Club
Monkton Garden Club	Mt. Washington Garden Club
Queen Anne's Garden Club	Roland Park Garden Club
St. George's Garden Club	Silver Fancy Garden Club
Town & Country Garden Club	
Womens Club of Roland Park	Woodbrook-Murray Hill GC

Individual MDS Members

Amelia Abrahams	Judy Bruner
Mary Hannah Arnot	Debbie Cameron(P)
Joan Bender	Mitch & Kate Carney
Martha Best	Don Caton
Perry J. Bolton (A)	Marie Coulter
Helen Bonsal (P)	Ana Maria Colwill
Elaine Borne	Sylvia Deck
Diana Boyce	Marion DeGroff (SS)
Joe Brady (AS)	Joan George
Jill Breen	Patricia Ghingher
Janet Brown	Lucy Goelet(SS)

Barbara Gould
Sue Grady
Glenna Graves
Jacquelyn A. Handley (SS)
Rebecca Henry (SA)
Janet Hickman
Frances V. Horich
Bobbie Hudson(P)
Bob & Lina Huesmann
Reed & Susan Huppman
Anne Jamison
Nancy Johnston
Sherry Jordan
Katherine Kingsley
Kay Kness
Debbie Kurz
Jane R. Lynn(P)
Amanda Mahoney (SS)
Leah McAfee
Meredith McDonagh (A)
Julie Minch (P)
Joan Moore (SS)
Janet Noland
Maria O'Rourk
Susan Palmer (P)
Pat Parker(P)

Mary Charlotte Parr
Sue Perry
Donna Reid
Trish Reynolds (SS)
Lucy Rhame (P)
Reiko Royston
Marjorie Schiebel
Nicki Schwab (SS)
Alexandria Secor (SS)
Freddie Shaw
Barbara Shea
Beverly Shelly
Bonnie Stevens
Nell Strachan
Carolyn Taylor
Mary Ann Thompson (SS)
Sue Thompson
Francis & Frank Turner
Pauline Vollmer (AS)
Ginger Wallach
Sally F. Waller
Carol Warner
Kitty Washburn
Edward & Olivia Welbourn
Kathy Welsh
Hilles Whedbee (S)



DAFFODIL CLASSIFICATION

An abbreviated list of the 13 divisions as revised by the Royal
Horticultural Society, 1998

DIVISION 1



TRUMPET DAFFODIL CULTIVARS

One flower to a stem, trumpet as long, or longer than the perianth segments (petals)

DIVISION 9



POETICUS DAFFODIL CULTIVARS

Characteristics of the *N. poeticus* group clearly evident usually one flower to a stem, perianth segments pure white, small, flat cup, usually edged in red, but occasionally solid, fragrant

DIVISION 2



LARGE-CUPPED DAFFODIL CULTIVARS

One flower to a stem, cup (corona) more than one-third the length of the perianth segments

DIVISION 3



SMALL-CUPPED DAFFODIL CULTIVARS

One flower to a stem, cup not more than one-third the length of the perianth segments

DIVISION 10



BULBOCODIUM DAFFODIL CULTIVARS

Characteristics of Section *Bulbocodium* clearly evident: usually one flower to a stem, perianth segments insignificant compared with dominant corona, filaments and style usually curved

DIVISION 4



DOUBLE DAFFODIL CULTIVARS

One or more flowers to a stem, with doubling of the perianth segments, or the corona, or both

DIVISION 11

DIVISION 5



TRIANDRUS DAFFODIL CULTIVARS

Characteristics of *N. triandrus* clearly evident: usually two or more drooping flowers to a stem, perianth reflexed

SPLIT-CORONA DAFFODIL CULTIVARS

Corona split, usually for more than half its length



11a

Collar Daffodils - The corona segments are opposite the perianth segments usually in two whorls of three

DIVISION 6



CYCLAMINEUS DAFFODIL CULTIVARS

Characteristics of *N. cyclamineus* clearly evident: one flower to a stem, perianth segments significantly reflexed, flower at an acute angle to the stem on a very short neck



11b

Papillon Daffodils - The corona segments are alternate to the perianth segments, usually in a single whorl of six

DIVISION 7



JONQUILLA DAFFODIL CULTIVARS

Characteristics of Sections *Jonquilla* or *Apodanthi* clearly evident: usually one to five flowers to a stem, perianth segments spreading or reflexed, cup usually wider than long, fragrant

DIVISION 12 OTHER DAFFODIL CULTIVARS

Cultivars which do not fit the definition of another division

DIVISION 8



TAZETTA DAFFODIL CULTIVARS

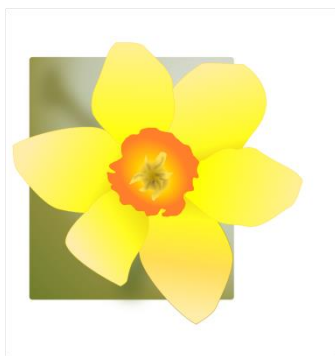
Characteristics of Section *Tazettae* clearly evident: usually three to twenty flowers to a stout stem, perianth segments spreading, not reflexed, usually fragrant

DIVISION 13 SPECIES

Daffodils distinguished solely by botanical name

Join the Maryland Daffodil Society!

Your membership dues help support this show and other events of the society. Members receive the show schedule, MDS newsletters and updates of events within the society. Questions? julesmin@gmail.com



Become a member today.

One year individual membership \$20.00
Garden Club membership \$25.00

Additional donations are;

- Award Sponsor \$25.00
- Show sponsor \$50.00
- Show Patron \$100.00
- Show Angel \$200.00

Send to: The Maryland Daffodil Society, Inc.
c/o Julie Minch
8602 Countrybrooke Way
Lutherville, MD 21093

Clip and send in-

Name_____

Address_____

Phone _____ E-mail_____