

# Hotel Energy Management



Control Board TP4-Enersol

The new TP4-Enersol energy control board is a revolutionary combination of two generations

- a) electromechanical handling by pushing buttons
- b) electronic processing by motherboard control

This combination of two technologies results in highest possible energy economy efficiency with very simple and easy control handling on site.

Just push or release control buttons required.

Most common energy commitments on the market are the computer based software programs BMS for energy management control of hotel buildings.

That kind of software and hardware equipments are complex to use and often needs specialized personal to handle the every day control of rooms.

This operation difficulties often results in an fare of using the software program, perhaps something will go wrong and cause severe problems.

A typical layout of the control panel



# Functions available on TP4-enersol Control Board

Heat Pump  
Eco or **Full**  
Cool or Heat  
OFF or **ON**

DHW Boiler  
**Electricity**  
Or  
**Heat-Pump**

DHW Boiler  
**Thermostat**  
**Solar Heating**

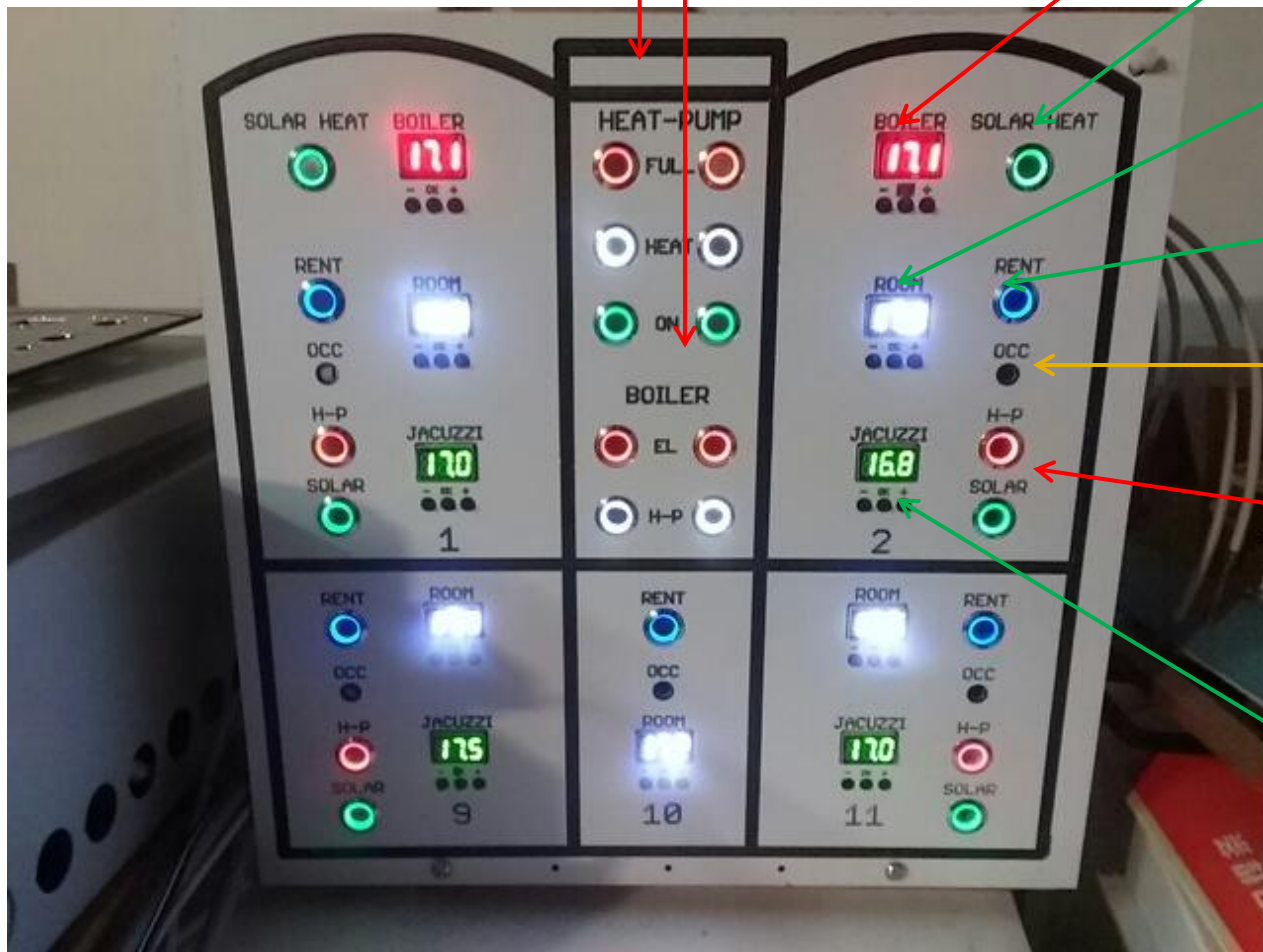
Room  
Thermostat

Rent  
**Indication**

Occupied  
**Indication**

Jacuzzi  
**Heat-Pump**  
Or  
**Solar heating**

Jacuzzi  
**Thermostat**



A typical layout of the electronic hard-ware



# A typical layout of the electronic hard-ware

4 motherboards  
managing up to  
5-6 rooms each.

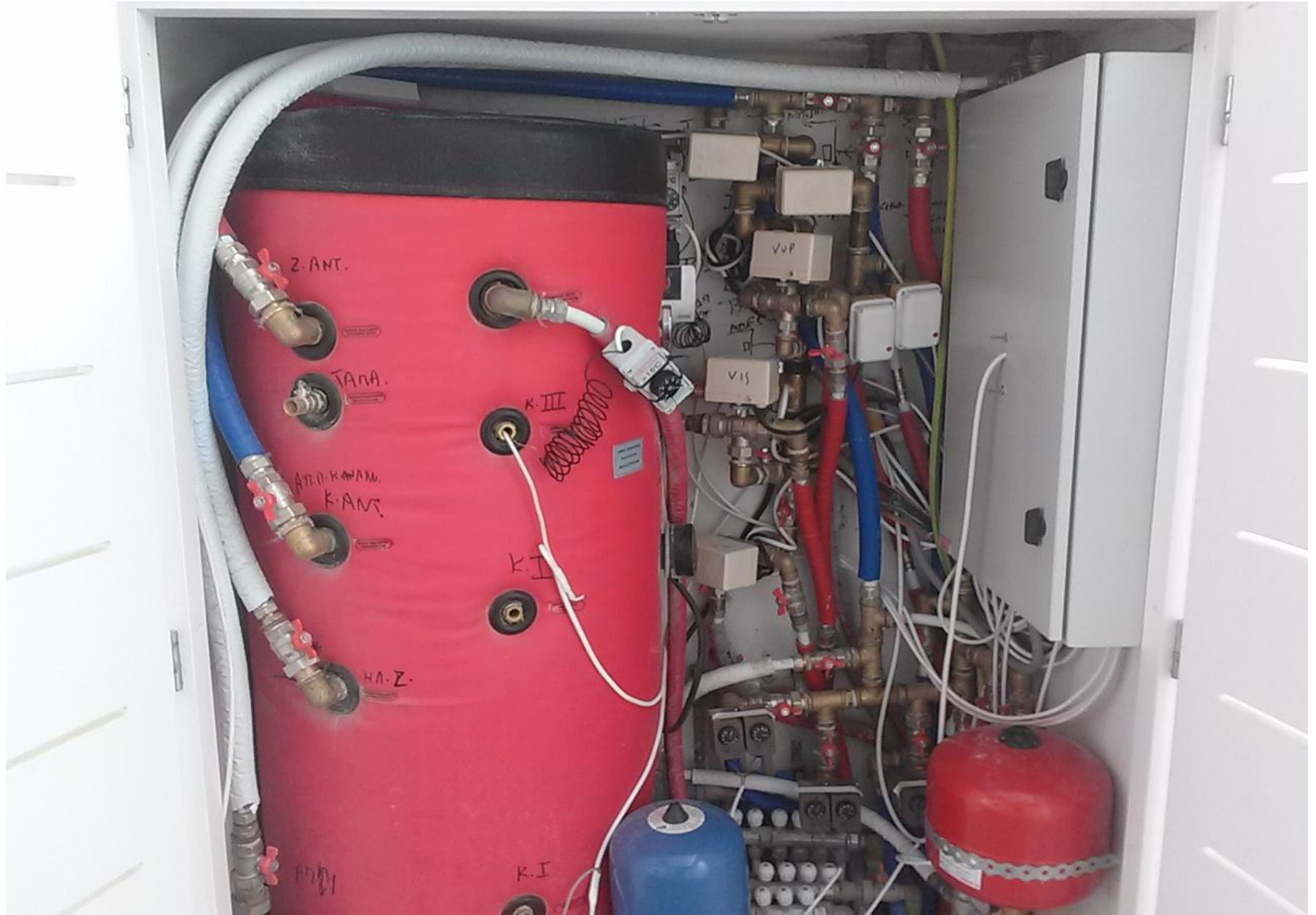
44 pcs of digital  
flat thermostats  
and set buttons.

88 pcs of control  
buttons with led  
& visual position

8 x 40 lead cable  
to the machinery  
rooms & relays



# A typical layout of a small sized machinery room





# Functions available on TP4-enersol Control Board

Heat Pump  
Eco or **Full**  
Cool or **Heat**  
OFF or **ON**

The heat pump control buttons allows you to fully manage all the functions of each unit in remote control mode from the reception desk



ECO or FULL  
On heat-pumps with two setpoints for either full and 'eco' reduced temperature output.

COOL or HEAT  
Depending on season space heating in winter and space cooling in summer period.

ON or OFF  
Closing the Heat-Pump where rooms are not habited gives economy.

# Functions available on TP4-enersol Control Board

## DHW Boiler Electricity Or Heat-Pump

The hot water boiler control buttons allows you to choose the energy mode electricity or heat-pump function from the reception desk



**ELECTRICITY**  
Should be preferred in summer when heat-pump works intensively in cooling mode.

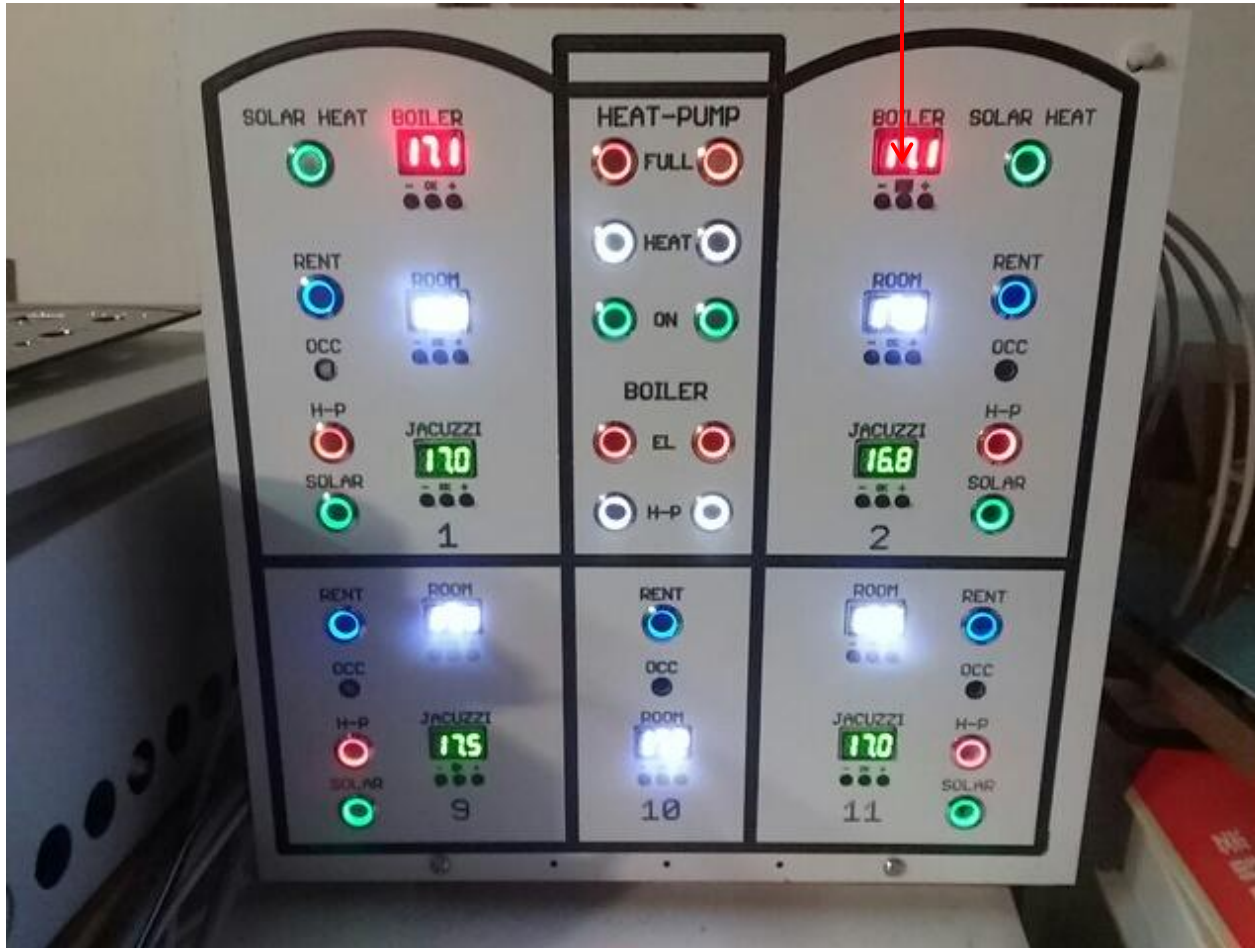
**HEAT-PUMP**  
Could be preferred when cooling loads are not so intensive.

**ON or OFF**  
Closing both buttons using only solar energy gives you economy.

# Functions available on TP4-enersol Control Board

## DHW Boiler Thermostat

The hot water boiler thermostat has three buttons, allowing you to set the temperature of the hot water from the reception desk



Display shows default temperature of boiler

Pressing OK button it shows the set point.

You can then alter the set-point by pressing the (-) or (+) buttons repeatedly.

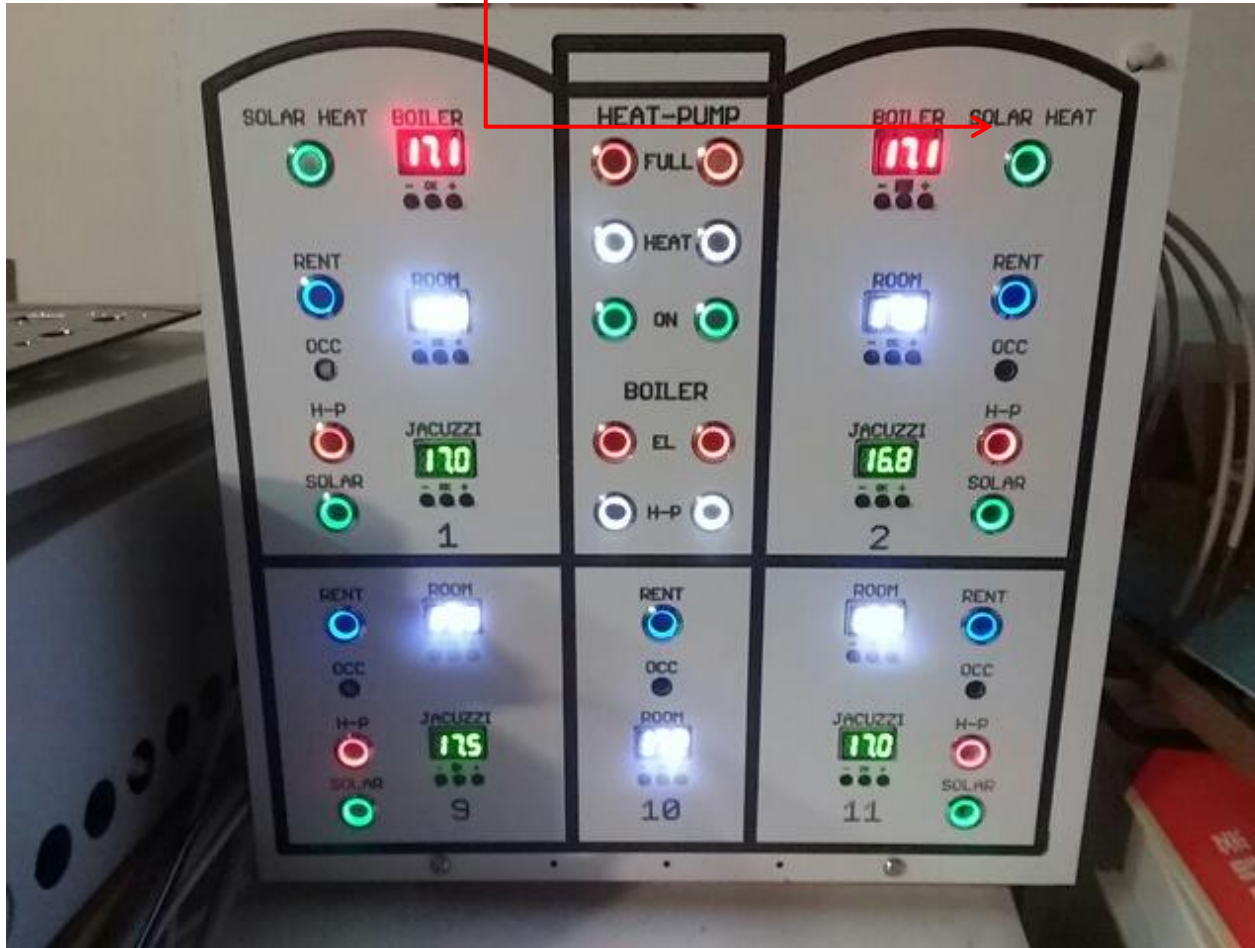
Then press OK to fix new selected set-point into the memory.

Not effected by solar.

# Functions available on TP4-enersol Control Board

## Solar Heating

The solar heating button activates solar floor heating at periods when facilities are not used in order to protect from humidity damages.



The solar heating is a separate function for protection of facilities from humidity damages when the facilities are closed in off-season.

Solar floor heating is not controlled by the room thermostat.

During solar floor heating function no solar hot water is produced.



# Functions available on TP4-enersol Control Board

## Rent Indication

The rent indication button is pushed by the receptionist whenever a customer enter the facilities and is released whenever he leaves.



The rent indication is useful for the cleaning personal to know if the rooms are rented or not

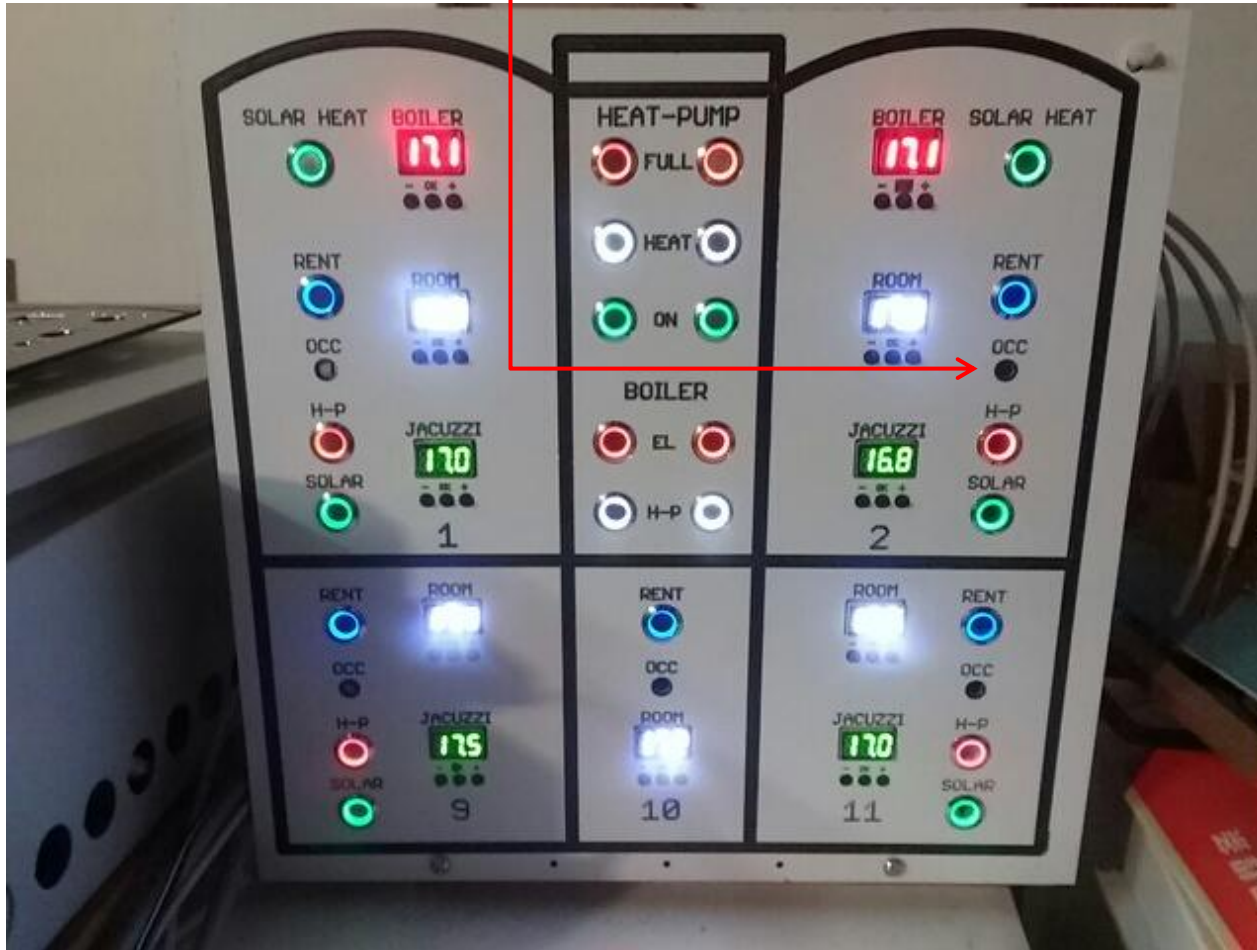
It can also be used for control of not rented rooms being occupied.

Statistics of rented and occupied rooms can be displayed on internet for invoicing control.

# Functions available on TP4-enersol Control Board

## Occupied Indication

The occupy indication Led is activated when the customer enters the room facilities and is released whenever he leaves the room.



The occupy indication is useful for the cleaning personal to know if the customer is out or not

It can also be used for control of not rented rooms being occupied.

Statistics of rented and occupied rooms can be displayed on internet for invoicing control.

# Functions available on TP4-enersol Control Board

**Jacuzzi**  
**Heat-Pump**  
**Or**  
**Solar heating**

The Jacuzzi pools can be heated either by solar energy or by the local Heat-Pump or by both simultaneously, controlled by the thermostat



The solar heating of the Jacuzzi is controlled by a thermostat  $> 35^{\circ}\text{C}$  in the solar water tanks which automatically starts the activated solar pumps.

If solar energy is not sufficient then pressing the H-P button allows auxillary Jacuzzi heating from the Heat-Pump

The solar tanks are also equipped with auxillary emergency heat-pump.



# Functions available on TP4-enersol Control Board

## Jacuzzi Thermostat

The Jacuzzi pool thermostat has three buttons, allowing you to set the temperature of the hot water from the reception desk



Display shows default temperature of boiler

Pressing OK button it shows the set point.

You can then alter the set-point by pressing the (-) or (+) buttons repeatedly.

Then press OK to fix new selected set-point into the memory.

Effectuated also by solar.

# Functions available on TP4-enersol Control Board

All settings, functions and statistics can be monitored on internet.



Developed and manufactured by  
TP4-enersol and Electronicrepairs

# TP4-enersol Energy Management Control Board

We design and construct anything according to your requirements



TP4-enersol engineering team Lars & John  
Call us for further information 6932-231959