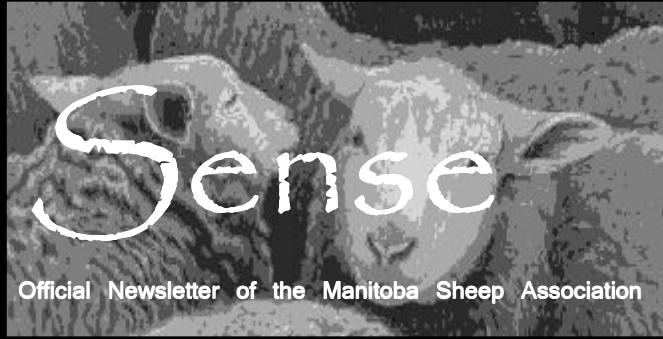


Sheep

May 2011

Volume 8 Number 3



Official Newsletter of the Manitoba Sheep Association

What's Inside

- 2** - Production Seminar
- 3** - Production Seminar
- 4 - 5** Lamb Care
- 6** - RFID Videos
- 7** - Lamb Co-op Update
- 7** - Cash Advance program
- 8** - Tour Cancelled
- 8** - Nat'l fleece Competition
- 9** - Wool depots/ Shearers
- 10** - Wool Market Update
- 11** - Classifieds
- 12** - Fibre Festival
- 13** - Hair sheep
- 13** - Sheep Vets
- 14** - Breed Profile-NCC
- 15** - Royal Winter Fair
- 16 -19** Show and Sale

Chair report - Lucien Lesage

It is with regret that the MSA has accepted Mark Humphries resignation as chair and Southwest district representative. I have accepted the position of chair for the remainder of 2011. Mark suggested that the lack of financial compensation for time spent on producer's behalf continues to be an issue for those on the board. As we are involved on numerous boards and committees, it is my belief that we need to put together a business plan that would target time spent on each project and the boards we are involved with.

As we move forward, we are still staying the course for 2011. We are still meeting with government with different proposals that would benefit the sheep producers in our province. We are currently revamping our web site, and also are trying to keep you up to speed on what's happening. Your email address would be greatly appreciated. Please forward them to gerry@spiritsands.ca.

In the past couple of weeks, I have been contacted by our provincial agricultural office to help them in locating any producers at risk with the flood. Should you be one of them, contact your local GO office. They have every thing in place to assist you. It is when we see these disasters that premise ID will definitely facilitate their task.

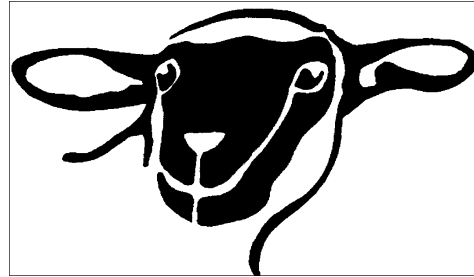
As chair I am always committed to represent producers with best result for a profitable and sustainable industry. Lucien Lesage

Election in SW district

An election for the MSA SW district representative will be held during the production seminar **May 26**, Wilderness Inn, Boissevain, MB.



4-H clubs took part in a multispecies judging competition at the Royal Winter Fair in Brandon.



Manitoba Sheep Association

Sheep Production Seminar
“LAMB MANAGEMENT after LAMBING”

Speaker: Mamoon Rashid

Business Development Specialist (Small Ruminants)

Manitoba Agriculture, Food and Rural Initiatives

Thursday, May 26th, 2010

7:00-9:00 PM

Wilderness Inn, Boissevain MB

Sponsored by

Boundary Co-op, Boissevain MB

Manitoba Sheep Association

Contact: Trevor Knight (204-534-0651)

Sheep Production Seminars



"Lamb Management after Lambing"

May 30th, 2011 (Monday) 1:00-4:00 PM
Manitoba Agriculture, Food and Rural
Initiatives GO Office Building, Minnedosa
Contact: Janine Souque 204-868-6022

May 31st, 2011 (Tuesday) 7:00-10:00 PM
Vita Arena, Vita
Contact: Kristen Bouchard-Teasdale
204-712-7056



Mountainview Sheep Assoc Holds info night

On Tuesday, May 3, the Mountain View Sheep Association held an informational supper meeting in Ste. Rose, MB. We had two speakers, one talking about his experiences with sheep nutrition when feeding his flock. The other speaker is a forage expert who taught us many things about forage management. It was a very educa-

MAFRI Multi Media Library

Listed are multi media materials available to borrow from Mamoon's library

545 University Crescent
Winnipeg, MB R3T 5S6 Canada

Phone: 204-945-7557

Cell: 204-232-8891

Fax: 204-945-4327

EMAIL: mamoon.rashid@gov.mb.ca

DVDs

The Basics of Good Sheep Management
Shearing Techniques
Starting Your Border Collie on Cattle,
Sheep or Ducks
Fresh Canadian Lamb (Carcass Fabrica-
tion, Primal & Subprimal Cuts)

CDs

Value Chain Management
Expanding the Flock
Value-Added Guide & Workbook

VHS Tapes

Lambing Time Management Vol 1,2,3.
The Basics of Good Sheep Management
The Grading of Lamb Carcasses
Livestock Guarding Dogs "Protecting Your
Sheep" – USDA
Meat Cutting
Lamb Survival
Breeding Lamb for Today's Market
The Rideau Producer 'Managing Prolific
Sheep'
New Zealand Wool Board 'Shear Training'
New Zealand Wool Board Wool Handling'

Lamb Management - after lambing

*Mamoon Rashid, Business Development Specialist (Small Ruminants)
Manitoba Agriculture, Food and Rural Initiatives*

In today's high cost of productions it is critical to maximize the pounds of weaned per ewe. The best possible way to achieve this is by saving the lambs that are born. It is also time to manage your replacements for maximum output down the road. After going through all the hardships of lambing time now is the time to watch for what's coming next.

It is always good not to disturb the birthing process and move the ewes to the jugs or individual lambing pens to avoid other complications. According to Sheep Codes of Practice a pen size of 16 ft²/head is plenty for one ewe and its lambs depending on the breed size. The lambing pens/jugs must be dry and well bedded to avoid injuries and conditions like pneumonia to the newborn lambs in the jugs until they first couple of days are very important for this to happen. Licking of the ewe to her newborn has been properly with 7% iodine solution. Also make sure the navel is nipped and disinfected. Make sure the navel is nipped and disinfected.



The first milk after the lambing (colostrums) is required to gain immunity against some diseases. The colostrums from a ewe vaccinated in the last trimester of pregnancy will protect the lambs from pulpy kidney (enterotoxaemia) and tetanus for the first few weeks. Ensure enough colostrums in the first 12 hrs of life: 10-20% of lamb's body weight within 3-12hrs after lambing. In case of weak lambs tube feeding may be needed to feed the colostrums. Proper technique for tube feeding should be practiced before lambing to avoid any complications. The colostrums from the own mothers is the first priority otherwise milk from any healthy ewe with singles or a heavy milkers can be used. Goat or cow milk can also be used if colostrums from ewes is not available. It is not advisable to microwave or directly heat frozen colostrums this can destroy the antibodies needed for the immunity.

Lambs from the ewes with triplets/twins producing not enough milk, from dead ewes, and abandoned lambs due to any reason can be grafted or kept in orphan pens. Grafted and the orphan lambs may need special attention. Orphan lambs must be fed colostrums from available sources within first 12 hrs of birth. Tube or bucket feeding with the artificial nipples may be needed to feed milk replacer to the orphan lambs also called artificial rearing. Grafting should be done only with the ewes that can accept the lamb. Rubbing of birthing fluids and afterbirths of recently lambing ewe to an orphan lamb makes her a good candidate to graft that lamb.

If the ewes were vaccinated in the last trimester then lambs would need their first shot (7 Way or 8 Way, Covexin 8) at 6 weeks of age. Otherwise, the lambs must be vaccinated during the first week of age. The subsequent shots are needed six monthly and then annually. Depending upon the health status of the bred ewe the new born lambs may have to stay separate from their mothers from day one. If the diseases like *Maedi Visna*, *Johne's* and *Scrapie* are suspected in the breeding ewes even few drops of milk can pass on the disease to the offsprings.

Remove the ewe and lambs from the jugs as soon as possible (1-3 days) and move in bigger

Canadian Sheep Federation (CSF) Launches Radio Frequency Identification Device (RFID) tagging videos

April 19, 2011 – Guelph, Ontario – The Canadian Sheep Federation is proud to announce the availability of a series of 8 videos on Radio Frequency Identification Device (RFID) tagging. The series of videos, available in English and French provides complete “Why, When, What and How to” information with regards to the use of RFID identifiers for the sheep industry.

8 RFID tagging videos - available for all on the CSF website:

- Video 1: Why tag?
- Video 2: When to tag?
- Video 3: Tagging systems
- Video 4: Tagging hygiene
- Video 5: How to restrain animals
- Video 6: Where to place the tag?
- Video 7: Tagging with Shearwell
- Video 8: Tagging with Allflex

As the industry prepares to move with RFID tagging, which has been identified as the most feasible method of data capture that could both satisfy traceability requirements and not impede the speed of commerce for the industry, these videos are valuable tools and an integrated part of our efforts in communication, and information and education required to make sure the RFID system provides a positive return for the industry.

The funding for the creation of the videos was made available under the Canadian Industry Traceability Infrastructure Program (CITIP), and will help the sheep industry address the federal government’s initiative for mandatory traceability as one of the four priority species (Hogs, Cattle, Sheep and Poultry) identified by government.

The Canadian Sheep Federation is a national, non-profit organization that represents all Canadian sheep producers. Its mission is further the viability, expansion and prosperity of the Canadian sheep and wool industry. For more information contact the Canadian Sheep Federation at 1-888-684-7739 or info@cansheep.ca.

cally after 40 days in lactation and lambs can be removed from the ewes anytime after the drop in milk production. Marketing timing of the finished lambs down the road should also be kept into the consideration while weaning. Early weaned lambs can be marketed early by finishing faster. Cut down on the grain feeding to the ewes one week before weaning and have adequate bedding available to avoid any injury to the udder.

Ewe lambs or the replacements can be fed differently than the finishing lambs to prepare them for breeding season. Apply the parasite control method applicable to the individual farm before the ewes and the replacements go to the pasture.

Agassiz Lamb Co-op Update

On April 14th a group of Manitoba lamb producers sat around a table in Portage la Prairie and created the Agassiz lamb Co-operative. The Agassiz lamb Co-op is a marketing opportunity for Manitoba producers who are interested in accessing higher valued markets for their lambs and at the same time share information on how to get the most return out of those markets.

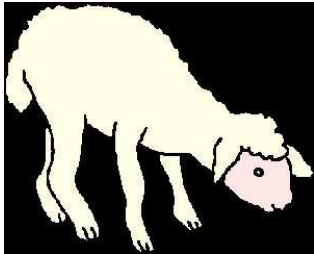
With the help of the Manitoba Cooperatives Association and MAFRI staff, producers from across the province had the opportunity to attend meetings outlining the Agassiz Lamb Co-op idea. At this point 9 founding members have stepped forward and purchased shares in the Co-op. The cost of membership is \$500 and includes a \$100 share and a \$400 membership fee.

At the first meeting the Co-op appointed its first board and executive. Randy Eros was appointed as chair, Mitch Millar as vice-chair, Stephan Bouw as secretary and Henry Nelson as treasurer.

The Agassiz Lamb Co-op is planning to start shipping lambs this fall and is still welcoming members to join. Anyone interested in finding out more is asked to call Randy Eros at 422-8723

Manitoba Livestock Cash Advance

www.manitobalivestock.com



**You may qualify for the
Livestock Cash Advance
Program:**

**The Advance Payment Program
(APP) provides producers with a cash advance on
the value of their lambs during a specified period.**

**By improving your cash flow throughout the year, the
APP producers meet their financial obligations and
benefit from the best market conditions.**

2011 applications now available on line

Ontario Tour cancelled

I recently met with Jayne Kjaldgaard with MAFRI to work on the funding application through the Growing Forward Agri Extension Business suite. We went over details of the planned tour and then Jayne called the person who runs the program . I regret to inform every one that we will not be getting funding under this program. The program only covers the actual tour cost and not the participant expenses to get to the tour etc. In reading the outlined eligible expenses it looked as if it would fund such a tour but it turned out that this is not the case. Thanks for your interest in the tour. If something should come up in the future where there would be funding for a tour like this, I would be glad to arrange and do the application.

Happy lambing , Mitch Miller

GRASSLANDS ALL CANADA SHEEP CLASSIC NATIONAL FLEECE COMPETITION

July 22 - 24th 2011

Drake Civic Centre, Drake, SK

Sponsored by

Saskatchewan Sheep Breeders Association; Saskatchewan Sheep Development Board; Canadian Co-operative Wool Growers Limited

CLASS 1: Range Wool

** Including Columbia, Rambouillet, Corriedale, Targhee, Merino*

CLASS 2: Long Wool

** Including Romney, Lincoln, Leicester, Cotswold, Coopworth*

CLASS 3: All Down Breeds

** Including Hampshire, Suffolk, Cheviot, Dorset, Texel, Arcott breeds, East Friesian and Charollais.*

CLASS 4: Other Specialty Wools

** Including Icelandic, Shetland, Jacob, Karakul, Coloured*

CLASS 5: Crossbred Wools

** From sheep which represent a combination of any two of Class 1, 2, 3 or 4.
(e.g. Long Wool breed x Down breeds)*

**For a listing of Provincial Abattoirs that process
lamb and sheep - [www.gov.mb.ca/agriculture/
livestock/abattoir/bac00s05.html](http://www.gov.mb.ca/agriculture/livestock/abattoir/bac00s05.html)**

Manitoba
Please phone ahead to all wool depots
Mark all your bags with your full name, mailing
address and phone number

| | | |
|------------------------------|----------------|------------------------------|
| Howard Alexander | Stonewall | 204-467-9399 204-467-9399 |
| Herb Benson | McCreary | 204-835-2556 204-835-2556 |
| Norman Goulet | St Claude | 204-379-2328 204-379-2328 |
| Brian Greaves | Miniota | 204-567-3509 204-567-3509 |
| Roy Leitch Livestock Co. Ltd | Brandon | 204-727-5021 204-727-5021 |
| Jake Thiessen | Pansy | 204-434-6792 204-434-6792 |
| Linda Westman | Interlake area | 204-643-5551 204-643-5551 |

Shearers

Herb Benson, McCreary 204-835-2556

Louis Bisson, (MB & SK) Souris 204-483-3045

**Ivan Bugera, aussietrip05@yahoo.ca St. Pierre
204-433-3355**

Heinz Krauskopf, Austin 204-385-3621

John Lewis Kirkella, 204-845-2153

Virnon Wiebe, Austin 204-637-2319

Grant Zahaiko, Newdale 204-849-2273

**Clifford (Cliff) Metheral, (SK, MB) Nakomis
306-528-2113 306-528-2113**

**David Stott , (SK, MB) Yorkton 306-782-2137
306-782-2137**

Wool Market Update

March 2011

There is good news regarding the wool market and we are pleased to report that we expect much improved wool prices for the up coming year for both finer and coarse micron wools....

A combination of factors can be attributed to this, some of which are as follows;

1) Recently released stat's indicate Aust & NZ wool production will again fall this year. Sheep numbers on a global basis are at record lows which is having an impact on wool supply availability which is currently at a 50 year low.

2) Sheep & lamb losses in NZ last fall of approx 1 million head due to severe snow storms right at lambing time.

3) Continued drought and recent flooding in Australia will no doubt result in more sheep losses and may increase the projected fall in wool production.

4) Man made fibers, especially polyester staple have increased significantly in price due to higher oil prices.

5) The sky rocketing price of cotton has been an unexpected surprise that has greatly benefited wool prices. Low global supplies of cotton due to crop failure in some key producing countries has resulted in cotton prices more than doubling in the last 6 months.

6) International promotion programs for wool are achieving success by creating greater awareness of the positive characteristics of wool. At the major 2011/12 fall & winter fabric trade shows, wool was very popular and well received by textile

manufacturers.

As a result, wool prices are rising and it looks promising for the up coming 2011 wool marketing season. The major risk for the market at this time is the current upheaval in the Middle East and its impact on oil prices (which could dampen economic growth and consumer spending), and the tsunami in Japan could also cause a drop in demand.

We will keep everyone advised of wool market conditions as they occur.

Yours truly,
Eric Bjergso
General Manager

Watch for parasites in the pasture

Last summer many sheep producers experienced very high levels of parasites in their pastures, including liver flukes and barberpole worms (*Haemonchus spp.*). This resulted in significant animal losses.

The extra moisture across Manitoba again this spring should serve as a red flag for all producers to watch carefully again for the presence of parasites in their animals. A regular de-worming program in the flock will help prevent mushrooming populations in the pastures.

It is a good idea to take regular stool samples to your vet, to help monitor the presence of parasites in the flock.

A rule of thumb with sheep is to treat ewes one month prior to lambing and one month after, as well as rotating pastures, always going to a pasture that has not had sheep grazing for at least 6 weeks.

CLASSIFIEDS

For Sale: January-born Polypay ram lambs ready in summer. Order now. \$325.00 @ For information call Ernie Hildebrand 204-873-2194

For Sale: Purebred Dorset ram lambs available fall 2011. Diana and Terry Neuman, 204-835-2745 or email - tallspruce@inetbiz.ca

For Sale: Stock Dog- started Border Collie female. Brit, from Montgomery lines of Maple Creek, Sask. This very well-mannered little lady has been started in the arena on sheep. Brit has good kennel manners. Brit is very focused on her handler. She is registered with the ABCA. Born 11/9/2008. She is classic Black & White and silky coated. For more information please go to <http://www.wall2wallsheep.com/> or call Lorna at 204-664-2027



2011 February lambing
FULL BLOOD WHITE DORPER RAM lambs \$500 each: registered.
50% White Dorper x 50% Katahdin Ram lambs \$250 each.
25% Katahdin x 25% Black Dorper x 50% White Dorper Ram lambs \$250 each.
Weaned and ready to go now. Limited numbers available.
For more information please go to <http://www.wall2wallsheep.com/> or call Lorna at 204-664-2027

For Sale: 350 commercial ewes for sale @ \$275 each. Will have lambs weaned by July 1, 2011. All must go to buyer. If you want to pick and choose the price will be \$300 each. phone #1 204 427 3633 or e-mail davisfamily555@hotmail.com

For Sale: 17 NCC yearling ewes. Clifford Flynn 204-733-2410

For Sale: 15 Texel and Suffolk ewe lambs; available in fall 2011 Gerry Oliver 834-2261 or email - gerry@spiritsands.ca

Wanted: 10 - 12 ewes as a starter flock. Mark Unrau, Austin 204-685-2941

Maple-and-apple braised lamb shoulder chops

Ingredients

| | |
|-----------------------|---|
| 8 lamb shoulder chops | 2 T. lemon juice or cider |
| 1 T. olive oil | 1 T. vinegar |
| 1 c. apple juice | 1 large apple, peeled and thinly sliced |
| 1/2 c. chicken stock | |
| 1/3 c. maple syrup | 8-10 seeded prunes, sliced |

Method:

Trim chops of fat and season to taste. Heat oil in a large, heavy-based pan and sauté the chops on a high heat for 2 minutes or until browned.

Combine the apple juice, stock, maple syrup and lemon juice and add to the pan. Reduce heat, cover and simmer over a low heat for 30-40 minutes or until lamb is very tender. Remove lamb from pan and cover with foil and keep warm.

Boil the remaining juices until thick and syrupy. Return the lamb for a few minutes to heat through and coat well with the sauce.

Serve lamb chops on mashed potatoes or squash, and spoon on the sauce, apples and prunes

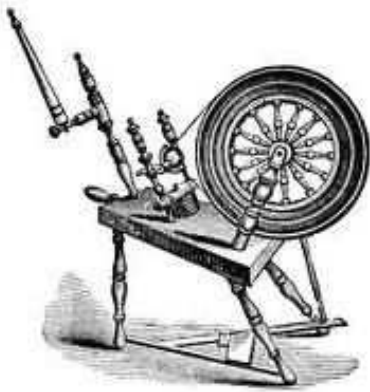


“Wild and Woolly” Fibre Festival

August 13 and 14, 2011

Neepawa Ag Grounds

- Wool sheep and fleece competition



- Wool Auction
- Workshops
- Vendors
- Spinning Circle

Special attraction

Sunday, Aug 14

“Sheep to shawl” demo

For more information
Contact Gerry Oliver, 204-834-2261
Email - gerry@spiritsands.ca

How to apply for On Farm Food Safety \$\$\$

As part of the MB Agriculture Growing Forward - On Farm Food Safety Program, funding has been made available to help producers purchase equipment appropriate to the program. Check the MA-FRI website for the list of equipment. To apply, follow the steps below:

- Submit Growing Forward Application including Premises ID form which is part of the GF application.
 - Complete Food Safe Farm Practices (FSFP) Program-Sheep training online (www.cansheep.ca) or in person.
 - Complete an audit of one lambing cycle.
 - Submit the audit completion certificate to GF
- Receipts for the purchased equipment can be submitted anytime during this process but the payment (retroactive) can be made only after the completion of audit. No payments will be made for any purchase done before submitting the GF application.

Please submit receipts and audit certificate all at once to eliminate lost items and confusion. Please do not submit receipts in prior to completing audit.

Sheep Audits- How much do they cost?

The cost of a sheep audit is, at this time, directly attributable to the cost of the auditor. Once MSA or another organization takes on the role of provincial delivery agent, they may need to recover some of their costs through the cost of the audit.

Currently the cost is only on the full audit, needed once every 4 years, and is dependent on the size of the flock and distance from a trained auditor. The beef program has four trained auditors, which makes it easier for an auditor to be found close to

the producer, in contrast to the sheep program with one trained auditor in MB. We have done three sheep audits in MB and the cost ranged from \$130 to \$270.

It is cheaper if we can coordinate more than 1 audit together to reduce the auditor's travel costs.

For more info contact CSF-
www.cansheep.ca

List of vets with interest in sheep and goats

Tanya Anderson, DVM
Gladstone Veterinary Clinic
Box 538 208 Morris Ave. S
Gladstone, MB R0J 0T0
Ph:(204)385-2892
Cell:(204)857-1704
Fax:(204)385-2021
gladvet@mts.net

Grand Valley Animal Clinic
Allister Gray, DVM
304 Pacific Ave
Brandon, MB R7A 0H5
204-728-0033

Wheat City Veterinary Clinic
Dr. Sherry Wurtz, DVM
1528 1st St North
Brandon, MB R7C 1A4
204-728-9262

Russell and District Veterinary Clinic
Dr. Cathy Clements, DVM
Box 1302, Russell, MB R0J 1W0
204-773-3777 204-773-2207 (emergency)

If you know of veterinarians who have are interested in a listing, please forward to gerry@spritsands.ca

Breed Profile

North Country Cheviot

BREED DESCRIPTION

The North Country is an intelligent, tough, resourceful sheep that produces both a superior lamb crop and a fleece that delights handspinners. It has outstanding crossbreeding ability and can be used as either the sire or the dam breed. The resulting lambs from cross-breeding to meat breeds have superior carcasses. At 90 to 120 days a first class North Country lamb will yield a carcass of around 45 pounds with a high proportion of lean meat of excellent quality. The cross on wool breeds develops a superior type of light shrinking, staple length, all-white wool of Medium grade. A mature ewe will weigh 180 pounds and a mature ram 300 pounds. North Country Cheviot rams impart vigor and muscling to their lambs. They are aggressive, active breeders and an ideal crossing breed.

North Country Cheviot sheep are pleasing to the eye. They are a large chalk-white, alert deep-bodied sheep, symmetrical in outline, belly and flanks well covered with wool. The rams are dis-

tinctly masculine and the ewes, strong, but feminine. The head is covered with short, glossy-white hair as are the legs. The nose is moderately long Roman to slightly Roman. Legs are medium long in proportion to size, good bone, strong pasterns and the hoofs are black.

An average fleece should weigh 8 to 10 pounds and in the grade range of 1/4 to 3/8 blood. It is of fairly fine quality, grading from 50's up to 56's Bradford count. The wool is pure white, lofty and strong, with very good staple length. It is not hard, but has a spongy feeling when grasped. The wool is largely used in the Scottish tweed trade and is a favorite of handspinners.



Call for Flood Assistance

Due to the urgent call for evacuation of livestock in those areas surrounding Lake Manitoba, it is of great urgency to find available pasture, feed or places to hold livestock for both the short and long term.

Therefore, a list of producers who have pasture available and which can be utilized for the summer is needed.

If you have any available pasture, feed or boarding, please call your local GO Office.

Janine Souque, B.Sc.

Farm Production Advisor

Manitoba Agriculture, Food and Rural Initiatives
South Parkland GO Team

Box 1198, 36 Armitage Ave. Minnedosa, Mb, R0J
1E0

Cell: (204) 868-6022

Fax: (204) 867-6578

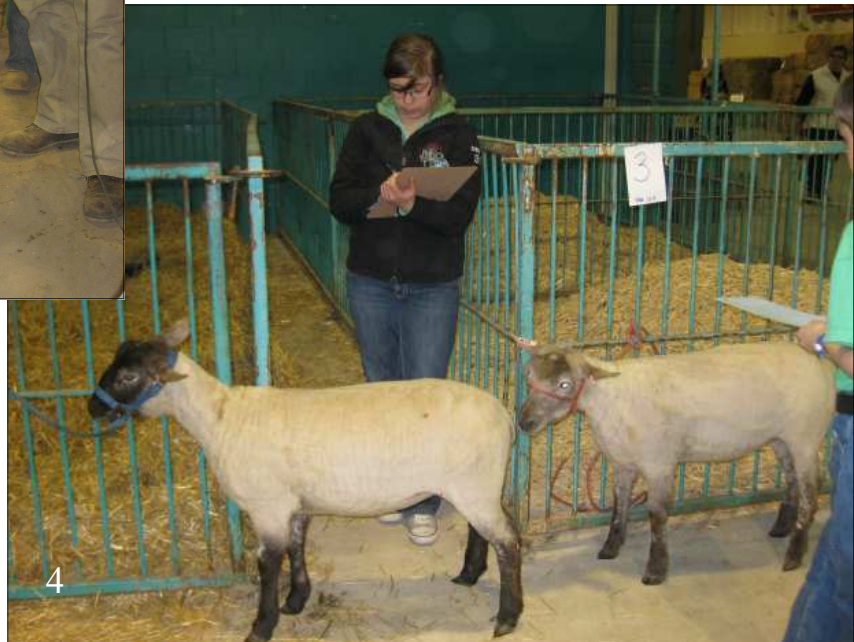
email: Janine.Souque@gov.mb.ca

Mountain View Sheep Association is holding its annual Sheep Show and Sale on Saturday, October 1 in Dauphin, MB. We will have a good selection of purebred breeding stock and commercial ewes. Inquiries may be directed to Virginia Fox [638-8103] or Diana Neuman [835-2745].

Scenes from the Royal Winter Fair Brandon- March, 2011



1. "Rosie" does the taste test - which forage tastes best?
 2. Angela Viola explains to 4-H contestants the process of judging the sheep. Four yearling ewes were used in the competition.
 3. Huston Block from the Brandon Research Station discussed forages with the kids, then let "Rosie" make her choice.
 4. Sierra Viola of Rossburn was the overall Junior champion. She had high scores in cattle, heavy horse, sheep, grain and forage judging.
- Photos by G.



The Prairie Shepherds 4-H and Manitoba Sheep Association 2011 Show and Sale, August 13 and 14, 2011, Neepawa Fair Grounds, Neepawaw, MB

Youth Show

Saturday and Sunday, August 13 and 14, 2011

Section One: Prairie Shepherds 4-H Club Achievement and Invitational

Class 1 – Ewe lamb (born in 2011)

Class 2 – Yearling Ewe (born in 2010)

Class 3 –Mature Ewe with lamb(s) at side

Class 4a –Market lamb (80-100lbs) (*does not have to be sold at show*) (**Members must show sheep born on their farm**)

Class 4b –Market lamb (101-120lbs) (*does not have to be sold at show*) (**Members must show sheep born on their farm**)

Class 5 – Junior Showmanship – 11 years and under, halters allowed.

Class 6 – Intermediate Showmanship – 12-14 years old, no halters allowed.

Class 7 – Senior Showmanship – 15 years and over, no halters allowed.

Class 8 – Stall Decorating (Bristol board Size) can include pictures and info on animals, club info and you. Go wild and have fun. Remember it has to hang on your stall. Ribbons awarded.

(Classes 5, 6 and 7 - Top two compete in Overall Showmanship division Sunday; Junior, Intermediate and Senior) 1st to 3rd ribbons and prizes

Entry Fee \$20.00 for classes 1 – 8 (**Note all fees must be received by July 31, 2011**)

Section 2: Fun Show (No entry fee – ribbons awarded)

Each exhibitor is encouraged to enter class 17. This class is judged by 4-H members and is designed to help solidify their showmanship skills.

Class 9 – Open Adult Showmanship – adults (22 yrs and older). No halters allowed. Animals supplied by the 4-H clubs.

Class 10- Costume Class, 11 yrs and under. Dress yourself and your sheep.

Section 3: Junior Show

For ages 4-21. These classes will give the newcomer a chance to participate in the show arena. We encourage young producers not in a 4H club to try these classes and we welcome them no matter their degree of knowledge. Producers invite your children, grandchildren, nieces and nephews and young friends to get involved.

Entry Fee \$ 5.00 for classes 11 – 13. Prizes awarded

Class 11 - Ewe Lamb 2010

Class 12 - Mature Ewe, must be two years and older

Class 13 - Showmanship will be split according to age groups if necessary

Manitoba Sheep Association Show and Sale

Saturday August 13 and 14, 2011 Sheep Sale - Sunday August 14, 2011

Section 4: Jackpot Market Lamb

Class 14– Jackpot Market Lamb – commercial or purebred, ewe or wether

This class will be divided into two weight categories, 80-100lbs/101-120lbs. These categories will be exhibited as separate classes and will be awarded as such.

Entry Fee: \$20.00/head

Prize Money: 1st \$100.00 2nd \$75.00 3rd \$50.00

Section 5: Jackpot Ewe Lamb

Entry Fee: \$25.00/head

Class 15 – Jackpot Ewe Lamb – Commercial and Purebred Ewe Lambs

Prize Money: 1st \$ 100.00 2nd \$ 75.00 3rd \$50.00

Section 6: Purebred Show

Breeds will be shown in Alphabetical order. Entry fee: \$15/head.

All breeds, with at least three entries present, will be shown in their own section. Breeds with representation of less than three entries will be shown with comparable breeds. Sheep specific for wool, milk and hair productions will be shown in their own section.

Junior – Born January 1, 2011 or later.

Yearling – Born September 1, 2009 to August 31, 2010

Class 16 – Junior Ewe Lamb

Class 17 – Yearling Ewe

Class 18 – Junior Ram Lamb

Class 19 – Yearling Ram

Prizes: 1st \$25 2nd \$20 3rd \$15

*Note: The Top Two in each class will move on to the Champion of Breeds. No entry fees required.

Section 7: Champion of Breeds (No entry fee required) Prize: Ribbons

Class 20 – Female Champion

Class 21 – Male Champion

Class 22 – Champion flock (*4 animals representing both sexes, previously shown in above classes, no entry or fee required*)

Section 8: Commercial Show Entry fee: \$10/head

Class 23 - *Ewe Lambs* – Born January 1, 2011 or later.

Class 24 - *Yearling Ewes* – Born January 1 to December 31, 2010

Class 25- Commercial Pen of Two (Entry fee: \$10)

Class 26 - Commercial Pen of Three (Entry Fee: \$15)

Prizes: 1st \$20; 2nd \$15; 3rd \$10

Wool Show Entries: \$2 per fleece Prize: Ribbon

CLASS 28: Range Wool, white

* Including Columbia, Rambouillet, Corriedale, Targhee, Merino

CLASS 29: Long Wool, white

* Including Romney, Lincoln, Leicester, Cotswold

CLASS 30: All Down Breeds, white

* Including Hampshire, Suffolk, Cheviot, Dorset, Texel, Arcott breeds and Charollais.

CLASS 31: Other Specialty Wools

* Including Icelandic, Shetland, Jacob, Coloured

Champion in each class

Class 32: All winners in each class will compete for the **Grand Champion and Reserve Champion Fleece of the Show**– Ribbons (These fleeces will be auctioned off and a 5% commission will be collected by MSA) Other fleeces can be auctioned off with the same commission. Any fleece not in the auction will be removed. Mail-in entries will be considered – contact show secretary.

RULES & REGULATIONS:

The Manitoba Sheep Association Show & Sale is sponsored by the Manitoba Sheep Association in conjunction with the Prairie Shepherds 4-H Sheep Club.

This show is being organized to promote sheep in Manitoba with emphasis on our junior members who will be our next generation of sheep farmers. Please consider safety first, for the competitors, visitors and our animals. Thank you.

All producers and 4-Her's are required to wear a white shirt and black pants while showing and selling their animals.

Commercial Entries must be received by July 31, 2011 in order to be in the sale catalogue. Required fees must accompany entries.

Purebred Entries must be received by July 31, 2011.

ALL PUREBRED ENTRIES MUST INCLUDE REGISTRATION PAPERS and all registration papers MUST BE PRESENTED ON ARRIVAL in order for animals to be entered and sold as purebred. NO EXCEPTIONS. If you have not received your registration papers from the CLRC, please notify us ONE WEEK before the sale
ENTRY FEES: Cheques payable to the Manitoba Sheep Association

Purebreds

- MSA Members and out- of -province producers \$10.00/each + GST
- Refunded Producers - add \$5 plus GST.

Commercial

- MSA Members and out-of- province producer:
\$10/pen of Two plus GST
\$15/pen of Three plus GST
- Refunded Producers add \$5 plus GST.

Jackpot 2011 Ewe Lamb \$25.00 each

Jackpot 2011 Market Lamb \$20.00 each

ARRIVALS: The Show and Sale barn will be open for arrivals at 5 - 8 p.m, Friday August 12, 2011. All entries must be in the barn by 10 a.m. August 13.

SALES COMMISSION:

Purebred Rams & Purebred Ewes 8% + GST

Commercial Ewes/ Rams 8% + GST

STALLS: are 9'x 9' \$5.00 each includes shavings

FLOOR PRICE:

Each consignor may place a reserve bid prior to sale time. Commission will be levied on this reserved bid if the animal does not bring the reserve price while on the floor. **No exceptions.**

PUREBRED SHOW

LENGTH OF WOOL: Animals must have less than 1 inch of wool to be shown with the exception of wool breeds, which may be shown in full fleece. Animals may be sheared at the discretion of the selection committee and at the expense of the breeder. There will be a shearer on site. ALL MARKET LAMBS are to be slick shorn (less than ½ inch) and all animals must be clean (free of debris and manure).

SHOW TO SELL: All animals must show to sell with the exception of 4-H livestock and wool breeds. All purebreds must be registered and legibly tattooed and or tagged. **ALL CANADIAN SHEEP BREEDERS ASSOCIATION REGISTRATION CERTIFICATES (one for each animal) MUST BE PROPERLY SIGNED FOR TRANSFER AND BE PRESENTED TO THE SALE COMMITTEE ON ARRIVAL Saturday, August 13, 10 a.m.**

SELECTION COMMITTEE AND VETERINARY INSPECTION:

All animals will be inspected. Bio-security is at the top of our list of importance. The cull committee has been selected to choose healthy animals that match the requirements of the breed and the health status required by our vets. Any animal found to be unsound must be removed from the grounds immediately. Reasons for removal from the Show and Sale include, but are not limited to:

1. Active infections including, but not limited to, abscesses, open wounds and pink eye
2. Active Orf/Sore Mouth lesions
3. Poor testicular development
4. Unsound mouth
5. A body condition score of 2 or less; a score of 5 or more
6. Unsound feet
7. Lack of valid CSIP tag
8. Illegible tattoos (*The tattoo must be easily read and match the registration papers or the animal will be rejected from the purebred show and sale.*)
9. Evidence of external parasites – in the case of identifiable **Ked** infestations, all sheep from that farm will be deemed infected and subsequently scratched from the show and sale.
10. Lameness

All Selection Committee decisions are final.

Note: All animals are sold as physically sound on that day. The MSA and the Prairie Shepherds 4-H Club will not be held responsible for any latent ailments or injuries incurred once the animal has left the sale barn. It is the sole responsibility of the purchaser to do their due diligence in regards to the health and welfare of the animal(s) they have purchased.

SALES QUOTA:

There is no limit on the number of ewes entered. There is a maximum of (3) rams per exhibitor per breed. Consignments of flock dispersals will be at the discretion of the MSA and may require on farm inspections two weeks prior to the sale.

SUBSTITUTIONS:

Substitutions are allowed to a maximum of (2) per breed. AT NO EXTRA COST.

PUREBRED TRANSFERS:

After the sale the MSA will complete the transfer of registration to the purchaser and for this service the necessary transfer fee of \$10 will be deducted from the consignor's sale proceeds.

ANIMALS ON THE GROUNDS:

The only animals on the grounds will be Show and Sale entries, 4-H and **display livestock**.

Note: All dogs must be on leashes including Stock dogs.

All animals will only be allowed to leave the premises on Sunday August 14, 2011 upon completion of the sale event. There will be a barn boss on site to inspect stalls and papers (bill of sale) before permission to leave the grounds is permitted.

Advertisement

Breeders may place an advertisement in the Show and Sale Catalogue. Please provide a business card or similar article that you wish to use for your advertisement. All ads will be in black and white. Deadline for advertising is July 31, 2011. Cheques payable to Manitoba Sheep Association.

Business Card – \$25

Half Page – \$50

Full Page - \$75

Show and Sale information and entry forms will be available on the website