



HUSKY®

Portable Containment



**Lifetime
Warranty**

On All Welds and
Welded Seams

www.huskyportable.com

"The Leader of the Pack"

CALL TODAY! (800) 260-9950



Easy Lift Handles
Published Patent Pending



Pinch-Free Frame



Folding Frame Tank

Husky®'s port-a-tank liners are designed so there are no bulky corners or sagging liner. Our manufacturing process (patent pending-published) allows us to use one continuous piece of material for the side panel, which is then welded to our Husky®-duty floor material. We also install solid brass grommets in a tight pattern, alleviating any liner drooping at the frame. These features create the best fitting, most durable liner available.

- ★ Exclusive Easy Lift Handles make our Folding Frame Tank the easiest and quickest to fold and permits easy removal of any standing water.
- ★ Pinch-free Frame is designed with safety in mind!
- ★ Husky® Duty Floor made of acrylic-coated 28 oz. PVC is soft, pliable and foldable.
- ★ Quick Release Drain Sleeve eliminates fighting with ropes.
- ★ Our Double Folding Frame Tanks allow it to be stored in half the space!

Husky® Portable Containment builds all kinds of custom and specialty tanks not only for firefighting but other industries as well. From portable Baptism tanks, kids day fishing tanks, wash down tanks, oil spill clean up tanks and many more. Call Husky® for your custom tank today!

Firefighter tested and approved!

Husky® Portable Containment continues to set the bar for the folding frame tank and related industry. Our design teams efforts towards new innovations in the water shuttle arena of products is ongoing and never ending. We listen to our customers and bring forth the easiest to use, most durable and safest products on the market today! Call Husky® Today!

The Reflective Edge™ Liner

Husky® Portable Containment has designed a new liner for our folding frame tanks. This new liner called *The Reflective Edge™* has a reflective top hem that will help firefighters see the tank easier at night. When any light is shining its way it will act just as reflective lettering does and become very visible. It is easy for your tank to disappear in the night and in the heat of the moment it has been known for a driver to accidentally back into the tank destroying it. Help your driver and save your tank by using *The Reflective Edge™* Liner by Husky®!

The Reflective Edge™ Liner comes in any material options or liner options we offer.

The Reflective Edge™ can be installed on your existing Husky® liner but it will have to be shipped to our factory for the installation.

(800) 260-9950

Proudly made in the USA!
www.huskyportable.com

Leading Edge™ Tank

Husky®'s new *Leading Edge™ Tank* is the multipurpose tank of the future. The LE Tank is built as a standard folding frame tank in size that can be transformed into a *Skinny™ Tank*. We have designed a new frame that will allow you to take any size folding frame tank and partially fold one side creating a narrower tank that gives more options for set-up including back roads, which will allow traffic to pass without driving in the ditch. The good news is there is no assembly! It works just like a standard folding frame tank, but folds one more time. If you do not need the narrow-style tank, keep it as a full-size folding frame tank. You get the best of both tanks in one easy-to-use tank. All accessories that are offered with the *Skinny™ Tank* are available for the *Leading Edge™ Tank*. Have the best options in the field buy a new Husky® *Leading Edge™ Tank*.



Leading Edge™ Tank folded to a *Skinny™ Tank*.



At Husky® Portable Containment our goal is to manufacture the best products available on the market today. With countless years of experience in the Portable Water Tank and Primary/Secondary Containment Industry and years of designing these products, Husky® has the knowledge and technology to custom design and manufacture products to our customer's specifications.

Quality and customer satisfaction is always our number one concern. We stand behind our products and offer a lifetime warranty on all welds and welded seams. Whether it's a custom application, new products, or from our standard product line, Husky®'s quality and service is what you would expect from a leading manufacturer. We can be reached 24 hours a day, seven days a week and 365 days a year!

Part No.	Open (Standard)	Open (Skinny™)	Folded	Capacity	Alum.	Steel
LESTF-1500	10'3" x 10'3" x 29"	10'3" x 8' x 29"	10'3" x 7" x 29"	1450 Gal.	114 lbs.	143 lbs.
LESTF-2100	11'3" x 11'3" x 29"	11'3" x 8' x 29"	11'3" x 7" x 29"	1620 Gal.	129 lbs.	159 lbs.
LESTF-2500	12'3" x 12'3" x 29"	12'3" x 8' x 29"	12'3" x 7" x 29"	1750 Gal.	140 lbs.	174 lbs.
LESTF-3000	13'3" x 13'3" x 29"	13'3" x 8' x 29"	13'3" x 7" x 29"	1900 Gal.	154 lbs.	190 lbs.
LESTF-3500	13'3" x 13'3" x 29"	13'3" x 8' x 29"	13'3" x 7" x 29"	2050 Gal.	172 lbs.	210 lbs.

* LEALF Represents Aluminum Frame

Skinny™ Tank

Husky® Portable Containment *Skinny™ Tank* is a folding frame tank with a narrow design. It gives you more options for where you can set up your dump tank. If you are on a narrow or one-lane road, the 8' wide *Skinny™ Tank* allows access for your apparatus to get around the tank and not be forced into the ditch. It also gives better options in areas such as wooded spots with limited space.

We can build your *Skinny™ Tank* to the best dimensions that work for you including a double-fold *Skinny™ Tank*. An example of another possible size is 9' x 13', 8' x 15' that gives you a 2100 gal. capacity. We can also make you *Skinny™ Tank* taller to gain more capacity, such as 30", 32", 34" and even 36" tall. Be sure to measure your portable tank rack for the maximum size that will work.



Part No.	Open	Folded	Alum.	Steel
STFST-2000	8' x 14' x 29"	14' x 7" x 29"	129 lbs.	159 lbs.
ALFST-2000	8' x 14' x 29"	14' x 7" x 29"	129 lbs.	159 lbs.



Leading Edge™ Tank & Skinny™ Tank Accessories

- ★ 4", 4.5", 5" & 6" male/female flange kit. This allows a hard suction hook up on the outside of the tank with a low level strainer hooked up on the inside. Comes with unique mounting bracket.
- ★ 90 degree elbow with 4", 4.5", 5" & 6" male/female ends.
- ★ 10' hard suction hose sections, 4", 4.5", 5" & 6" male and female fittings.
- ★ Low Level Strainer, 4", 4.5", 5" & 6" sizes. Comes with 1.5" jet siphon. (Call for details)



www.huskyportable.com
(800) 260-9950 ★ (918) 534-0002

Husky®'s Folding Frame Tanks are available in steel frames or aluminum frames.



Lifetime Warranty
On All Welds and Welded Seams

Our frame materials were carefully chosen to give the best strength yet keep the weight to a minimum. Our aluminum frame material is specially designed with radius corners to help protect the liner rope, the liner and the firefighters hands. All Husky® frames are pinch free!

Steel Frame

- ★ 7/8" od., 14 Gage Round Tube Steel (HREW P&O)
- ★ Superior Heavy Duty Laser Cut Hinges.
- ★ Mig Welded Construction, Guaranteed!
- ★ High Quality PPG Paint Used For Finish (Gloss Black, Standard)
- ★ Available In 3/4" x 3/4" 14 Guage Square Tube Steel

Aluminum Frame

- ★ 1" x 1" x 1/8" 6061 Square Tube Aluminum With Radius Corners
- ★ Superior Heavy Duty Laser Cut Hinge
- ★ Approx. 25% Weight Savings Over Steel
- ★ Aluminum Mig Welded Construction, Guaranteed!
- ★ Available In Round Tube Schedule 40 6061-T6 Aluminum
- ★ Our hinge design allows for aluminum frames to fold down to 7 1/2"

Tank Size	Open	Folded	Double Folded - opt.	Steel	Aluminum
ALF-500 gallon	5'8" x 5'8" x 29"	7" x 5'8" x 29"	16" x 2'11" x 29"	90 lbs.	68 lbs.
ALF-750 gallon	7'0" x 7'0" x 29"	7" x 7'0" x 29"	16" x 3'7" x 29"	97 lbs.	79 lbs.
ALF-1000 gallon	8'3" x 8'3" x 29"	7" x 8'3" x 29"	16" x 4'3" x 29"	116 lbs.	96 lbs.
ALF-1500 gallon	10'3" x 10'3" x 29"	7" x 10'3" x 29"	16" x 5'3" x 29"	138 lbs.	109 lbs.
ALF-2100 gallon	11'3" x 11'3" x 29"	7" x 11'3" x 29"	16" x 5'9" x 29"	154 lbs.	124 lbs.
ALF-2500 gallon	12'3" x 12'3" x 29"	7" x 12'3" x 29"	16" x 6'3" x 29"	169 lbs.	135 lbs.
ALF-3000 gallon	13'3" x 13'3" x 29"	7" x 13'3" x 29"	16" x 6'9" x 29"	185 lbs.	149 lbs.
ALF-3500 gallon	14'3" x 14'3" x 29"	7" x 14'3" x 29"	16" x 7'3" x 29"	205 lbs.	167 lbs.
ALF-4000 gallon	15'3" x 15'3" x 29"	7" x 15'3" x 29"	16" x 7'9" x 29"	223 lbs.	178 lbs.
ALF-5000 gallon	17'3" x 17'3" x 29"	7" x 17'3" x 29"	16" x 8'9" x 29"	269 lbs.	215 lbs.

* STF Represents Steel Frame



Available on **GSA**

Our unique Manufacturing Process on our Frame Tank Vinyl Liners enable us to use a Husky® 28 oz. material for the Base, creating the **Most Economical Durable Liner on the Market Today!**

Our Liners are constructed from the finest materials available. *(Patent Pending-Published)*

Learn more at www.huskyportable.com

Quick Dump on Folding Tanks (patent pending)

Husky®'s **Quick Dump** is our latest patent pending invention. The Quick Dump is the answer to get your folding frame tanks emptied quickly when the fire scene is in its tear down stages. Just release the d-rings and latch and watch your tank drain in 20 seconds or so.

Double the Convenience

The combination of our patent pending **Easy Lift Handles** and our patent pending **Quick Dump** make Husky® folding frame tanks the only answer to quick tear down and storage of your tanks after fighting a fire or a long day of training. Get your tank on the truck quick with Husky® Portable Containment's Quick Dump.

- ★ Drain an average size tank in 20-30 seconds
- ★ Available in steel or aluminum frames
- ★ Available in vinyl or EXLON®
- ★ All stainless steel latching hardware
- ★ Backed by Husky®'s lifetime warranty on all welds and welded seams
- ★ Easy to use
- ★ Firefighter Trusted HUSKY® Quality



Husky®'s patent pending liner is the most economical durable liner on the market today!

Husky®'s new EXLON® high performance liner material is a direct replacement for the discontinued DuPont Hypalon. EXLON® has all the qualities and more to replace Hypalon. EXLON's® advantages are high UV resistance, high abrasion resistance, chemical resistance and strength. For the ultimate folding frame tank liner choose Husky®'s EXLON®.

Material Options

- ★ Vinyls:
 - All 22 oz. / 22 oz. Sides With Our Exclusive 28 oz. Floor / All 30 oz.
 - 22 oz. Colors: Red, Yellow, Blue, Orange, Green, White, Black, and *Lime Green*
 - 30 oz. Colors: Red, Yellow, Blue, Orange and Black
- ★ EXLON®: 22oz. Only, Colors: Red and Yellow
- ★ Potable NSF 61 Approved: 30 oz. Only, Colors: Black, Black and White, Blue

Features

- ★ Husky® Vinyl Liners come standard with a 22oz. Vinyl side & Heavy Duty 28 oz. floor
- ★ Exclusive **Easy Lift Handles** mounted on the floor of our tanks (Patent Pending-Published)
- ★ Two Drain Tubes are standard on 2500 gal. and up
- ★ #4 solid brass grommets & all hems are double stitched & triple reinforced
- ★ 10" Drain Tube with Quick Release for fast draining or mating with another tank
- ★ Replacement Liners guaranteed to fit your existing frame
- ★ Clear view panel liner (optional) includes a 12" wide heavy-duty, reinforced clear vinyl panel that allows you to easily view water level from any angle
- ★ Patch kits available for any liner material
- ★ Optional cinch straps keeps your folding frame tank tightly folded for storage
- ★ Reflective hem (optional)



Here at Husky® Portable Containment, we work hard — and we know you do, too. Husky®'s **Easy Lift Handles** make your job easier. With our heavy-duty handles attached to the floor of our folding tanks, tank tear-down not only takes less effort, but also saves valuable time and man-power. You can be assured that our Easy Lift Handles are made with the same attention to quality and durability that makes Husky® famous. All of our Folding Frame Tanks come equipped standard with Easy Lift Handles, another way we offer the best value available in a portable folding frame tank.

Call us today at (800) 260-9950 or (918) 534-0002

Self Supporting Tanks

Husky® Self Supporting Tanks are the perfect solution when storage and manpower are a concern. Self Supporting Tanks are a frameless portable water tank that can be quickly set up and filled by one firefighter. Husky®'s open top self supporting tanks are designed to be used as a dump tank or filled from the supplied coupling mounted in the tank. They are also designed to work better on slopes than any other open top tank on the market. Our Self Supporting Tanks are manufactured to meet the most stringent quality control standards.

Material Options

- ★ Vynils: 22 oz. Side Panels With 28 oz. Floor / All 30 oz.
Colors: 22 oz. Red, Yellow, Blue, Orange, Green, White, Black, and *Lime Green*.
30 oz. Red, Yellow, Blue, Orange and Black
40 oz. Orange and Black
- ★ EXLON®: 22 oz. Only, Colors: Red and Yellow

Features

- ★ Heavy Duty Foam Collar (self rising)
- ★ Heavy Duty Air Collar (self rising)
- ★ Low Side (LS) & High Side (HS) Models
- ★ Heavy Duty 28 oz. Floor, Standard
- ★ 2 ½" NH (NST) Female Flange Standard
- ★ 1 ½" - 6" Flanges Available, Male Or Female
- ★ All Our Flanges Are Made From 6061-T6 Aluminum
- ★ Ground Covers & Top Covers Available
- ★ Storage Bag Included
- ★ 6000 gal. and up tanks are built with 40 oz. PVC for the strongest self supporting tanks available

Skinny™ Tank Self-Supporting Tank

Husky® Portable Containment has expanded its *Skinny™ Tank* line. We are now offering our popular *Skinny™ Tank* in a Self-Supporting Tank model called the *Skinny™ SST*. It functions like our original *Skinny™ Tank* with a narrower design to allow you to use this tank in limited space areas that require traffic to pass. The *Skinny™ SST* is a frameless all-fabric tank that comes standard with an 8' wide base dimension, 16' 6" length, and a 34" height when filled, for a total capacity of over 2000 gallons. The approximate folded dimensions for the standard-size *Skinny™ SST* are 32" x 32" x 24", however this can be altered because this frameless tank can be folded in many different configurations. The standard tank weighs approximately 85 lbs. The *Skinny™ SST* can be built any size to fit your capacity and space requirement needs. Go with "The Leader of the Pack" go with Husky®.

Accessories

- ★ 4", 4.5", 5" & 6" male/female flange kit. This allows a hard suction hook up on the outside of the tank with a low level strainer hooked up on the inside. Comes with unique mounting bracket.
- ★ 90 degree elbow with 4", 4.5", 5" & 6" male/female ends.
- ★ 10' hard suction hose sections, 4", 4.5", 5" & 6" male and female fittings.
- ★ Low Level Strainer, 4", 4.5", 5" & 6" sizes. Comes with 1.5" jet siphon. (Call for details)

Husky®'s new revolutionary material EXLON® is now available for Self Supporting Tanks! EXLON® is a direct replacement for Hypalon. Hypalon has been discontinued by DuPont and is no longer available. Now get the same high performance material in your Self Supporting Tanks as in your Folding Frame Tanks. Don't settle for less; for the ultimate Self Supporting Tank choose EXLON®

EXLON®
High-Performance
Liner Material

Low-Side
& High-Side
Models

Wide Variety Of
Fittings To Offer
From Storz Fittings
To Camlock
Fittings

Self Supporting Tank Specs (250 Gal. – 20,000 Gal and Custom Sizes)

Tank Part No. Gal. (liters)	Base Diameter Std. / Meters	Top Diameter Std. / Meters	Height Filled Std. / Meters	Weight lbs. / kg.	Approximate Folded Dimensions Std. / Meters
* LS-250 (946)	5' 10" / 1.8	3' 7" / 1.1	28" / .7	27 / 12.3	22" x 22" x 16" / .6 x .6 x .4
* LS-500 (1893)	7' 0" / 2.2	4' 10" / 1.5	33" / .8	39 / 17.7	25" x 25" x 18" / .7 x .7 x .5
* LS-1000 (3785)	9' 6" / 2.9 6'	6' 11" / 2.1	33" / .8	54 / 24.5	25" x 25" x 22" / .7 x .7 x .6
* LS-1500 (5678)	11' 8" / 3.6	8' 8" / 2.7	33" / .8	67 / 30.4	28" x 28" x 22" / .8 x .8 x .6
* LS-2000 (7570)	13' 0" / 4.0	10' 0" / 3.1	33" / .8	75 / 34	30" x 30" x 22" / .8 x .8 x .6
LS-2500 (9463)	14' 4" / 4.4	11' 2" / 3.4	33" / .8	84 / 38	34" x 34" x 22" / .9 x .6
LS-3000 (11355)	15' 8" / 4.8	12' 3" / 3.7	33" / .8	99 / 45	34" x 34" x 24" / .9 x .9 x .7
LS-3500 (13248)	17' 0" / 5.2	13' 2" / 4	33" / .8	105 / 47.6	36" x 36" x 24" / .9 x .9 x .7
LS-4000 (15140)	18' 0" / 5.5	14' 2" / 4.3	33" / .8	114 / 51.7	38" x 38" x 24" / 1 x 1 x .7
LS-5000 (18925)	19' 8" / 6.0	15' 10" / 4.8	33" / .8	125 / 56.7	38" x 38" x 28" / 1 x 1 x .7
LS-6000 (22710)	21' 6" / 6.6	17' 8" / 5.4	33" / .8	143 / 64.9	38" x 38" x 32" / 1 x 1 x .8
LS-10000 (37850)	26' 9" / 8.2	22' 11" / 7.0	33" / .8	200 / 90.1	42" x 42" x 36" / 1.1 x 1.1 x .9
* HS-500 (1893)	6' 9" / 2.1	4' 0" / 1.2	40" / 1.0	39 / 17.7	25" x 25" x 18" / .6 x .6 x .4
* HS-1000 (3785)	8' 6" / 2.6	5' 6" / 1.7	44" / 1.1	54 / 24.5	25" x 25" x 22" / .7 x .7 x .5
* HS-1200 (4542)	9' 8" / 3.0	5' 10" / 1.8	44" / 1.1	59 / 26.8	26" x 26" x 22" / .7 x .7 x .6
* HS-1600 (6056)	10' 8" / 3.3	6' 10" / 2.1	44" x 1.1	67 / 30.4	28" x 28" x 22" / .8 x .8 x .6
* HS-1800 (6813)	11' 3" / 3.4	7' 0" / 2.2	46" / 1.2	72 / 32.7	30" x 30" x 22" / .8 x .8 x .6
* HS-2000 (7570)	11' 10" / 3.6	7' 8" / 2.4	48" / 1.2	75 / 34	30" x 30" x 22" / .8 x .8 x .6
HS-2500 (9463)	12' 10" / 3.9	8' 4" / 2.6	48" / 1.2	84 / 38	34" x 34" x 22" / .9 x .9 x .6
HS-3000 (11355)	14' 6" / 4.4	9' 0" / 2.8	48" / 1.2	99 / 45	34" x 34" x 24" / .9 x .9 x .7
HS-4000 (15140)	16' 6" / 5.0	10' 10" / 3.3	48" / 1.2	114 / 51.7	38" x 38" x 24" / 1 x 1 x .7
HS-5000 (18925)	16' 6" / 5.0	10' 2" / 3.1	60" / 1.5	125 / 56.7	38" x 38" x 28" / 1 x 1 x .7
HS-6000 (22710)	17' 10" / 5.4	11' 4" / 3.5	60" / 1.5	172 / 78	38" x 38" x 32" / 1 x 1 x .8
HS-8000 (30280)	18' 2" / 5.5	11' 10" / 3.6	70" / 1.8	230 / 104	40" x 40" x 34" / 1 x 1 x .9
HS-10000 (37850)	19' 4" / 5.9	12' 0" / 3.7	80" / 2.0	299 / 135	42" x 42" x 36" / 1.1 x 1.1 x .9
HS-14000 (52990)	21' 9" / 6.6	13' 9" / 4.2	90" / 2.3	368 / 167	44" x 44" x 40" / 1.1 x 1.1 x 1
HS-20000 (75700)	26' 0" / 7.9	16' 0" / 4.8	96" / 2.4	499 / 226	48" x 48" x 48" / 1.2 x 1.2 x 1.2

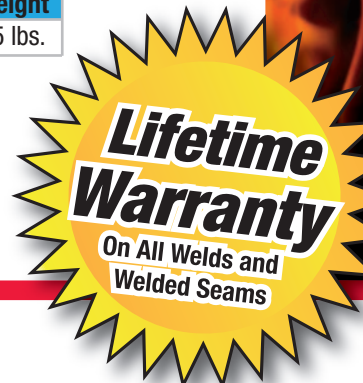
*Can ship by UPS

LS (low side) Models are used for Fire Departments & Municipalities HS (high side) Models are designed for use for the U.S. Forestry Department and bucket dipping operations.

Skinny™ Tank SST Specs

Part No.	Capacity	Filled Dimension	Folded Dimensions	Weight
SSST-2000 low side	2000 US Gallons	8' x 16'6" x 34"	32"x32"x24"	85 lbs.

Available on 



Husky® Hard Suction Hose Stand

Features

- ★ Aluminum and Lightweight Steel Construction
- ★ Adjust From 26" - 42" In Height
- ★ Base Size Deployed, 17" x 17"
- ★ Collapsed Size, 17" x 3" x 30"
- ★ Can Be Used Inside Or Outside The Tank
- ★ 13 lbs. Total Weight
- ★ Rubber Protected Feet
- ★ Opens In One Motion, No Pins Or Snaps
- ★ Locks In Place In One Turn
- ★ Easily Stored





**No Tarp
Too Big Or
Too Small**

Husky® Covers

Husky® Portable Containment has set the bar for salvage cover durability, strength and workmanship. Our 10 oz. material is unmatched in the salvage cover market and is NFPA 701 certified fire resistant. Also the base fabric or “scrim” has a “Rip Stop” quality that eliminates tearing.

Salvage Covers, Hall Runners and Ground Covers

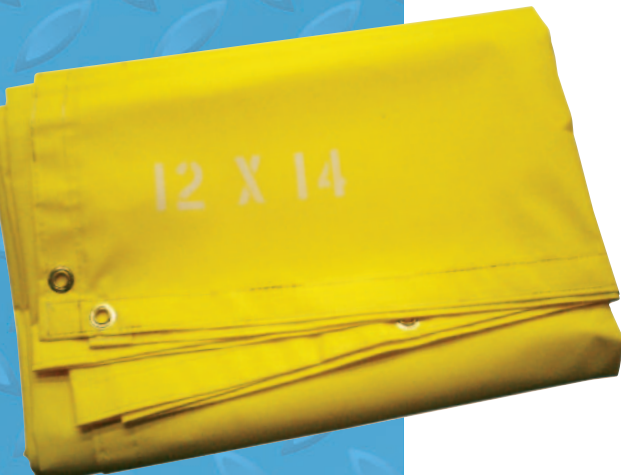
Material Options

- ★ Vinyls: 10 oz., 18 oz., 22 oz., 30 oz., 40 oz.
Colors: 10 oz.—22 oz., Red, Yellow, Blue, Orange, Green, White, Black, and *Lime Green (22 oz. vinyl only)*
30 oz., Red, Yellow, Blue, Orange and Black
40 oz., Orange and Black
- ★ EXLON®: 22 oz. Only, Colors: Red and Yellow
- ★ OD Canvas: 12 oz., Color: Olive Drab
- ★ Natural Canvas: 12 oz., Color: Off White and White (This canvas is untreated)

Features

- ★ All Hems Are Doubled Stitched And Triple Reinforced
- ★ #4 Solid Brass Grommets
- ★ Our Exclusive “Husky® Duty” 10 oz. Vinyl. Match Our 10oz. With Any Otherz On The Market And You Will See Our Superior Quality.
- ★ Flame Resistant, NFPA 701 Approved Material
- ★ “Rip Stop” Base Fabric Eliminates Tearing

**STANDARD SIZES, 9 x 12, 12 x 12, 12X14, 12X18, 14X18, 16X16, 20X20,
Custom Sizes Available**



Registered and approved by the California State Fire Marshall, our materials are equal to or exceed CSFM, NFPA 701 – Test 1 (Small Scale), NFPA 701 – Test 2 (Large Scale), CPAI-84, and NYC MEA. The flame retardant process used will NOT be removed by washing and is effective for the life of the fabric.



Available on



Hose Bed Covers and Cross Lay Covers

EXLON®
High-Performance
Liner Material

Material Options

- ★ EXLON®: 22 oz. Only, Colors: Red and Yellow
- ★ Vinyls: 22 oz., 30 oz.
Colors: Red, Yellow, Blue, Orange, Black, and *Lime Green* (22 oz. vinyl only)

Features

- ★ Hardware Options For Securing Your Cover To Your Truck—
Turn Buttons, Shock Cord With Supplied Hooks, Hook and Loop (Velcro), Button Snaps, Lift The Dot Fasteners
- ★ Reflective Lettering and Numbering
- ★ Husky's New "Chevron" Design For Hose Bed Covers (NFPA Reg.)
- ★ Chain Weighted Drops and Velcro Flaps For Fill Box
- ★ Our exclusive EXLON® material has exceptional UV resistance



Staging Mats, SCBA Tarps, RIT Tarps, Triage Tarps

Features

- ★ Emergency Equipment Staging Mats (EES Mats), 18 oz vinyl, Small Scene (6' x 10') Part No—EESM-SS, Large Scene (10' x 12') Part No—EESM-LS
EES Mats Are A Three Piece Tarp That Has An SCBA "Full / Empty" Section (Ribbed), Rescue Tool Section And A RIT Section. They Can Be Used As One Complete Tarp Or Separated Into Individual Tarps.
- ★ Economical SCBA Tarp, 18 oz. vinyl, 10' x 10' Green Side For Full And Red Side For Empty. Part No—HFET
- ★ SCBA Tarp Ribbed, 18 oz. vinyl, 10' x 10' Green Side For Full And Red Side For Empty. Part No—HFETR
- ★ RIT Tarp, 10' x 10' 10 oz. vinyl Blue Tarp with "RIT" in the corners
- ★ Triage Tarp, 4 - 10' x 12' 10 oz. vinyl tarps (Red, Yellow, Green, Black) with storage bag
- ★ Custom Staging Mats Available



Husky® Strainers

Floating Strainers

Husky® Portable Containment Floating Strainers can be used in lakes, streams, swimming pools, portable tanks and many other sources of water. Husky® strainers are designed for maximum flow and will draft in shallow water. The removable barrel can also be used as a strainer. Husky® floating strainers are a must for all fire departments. Our 3 year warranty is the best in the business.



**3 Year
Warranty**



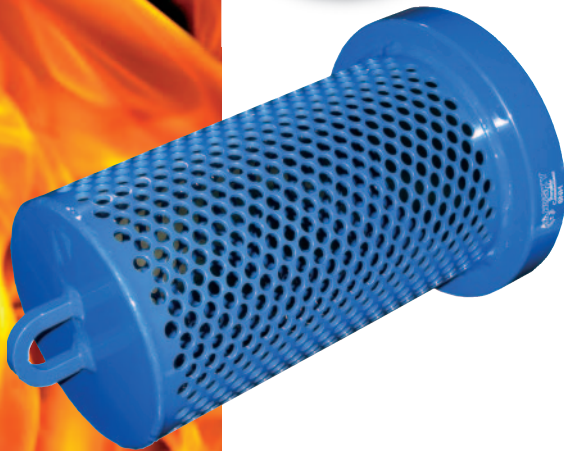
Features

- ★ All Aluminum 6061-T6 Construction. Lightweight and Easy To Handle
- ★ Removable Barrel Can Be Used As A Barrel Strainer
- ★ 1 ½" - 6" Sizes Available, Male Or Female Threads
- ★ Female NH (NST) Threads Are Standard. Any Threads Available
- ★ Storz and Camlock Fittings Available
- ★ Maximum Flow
- ★ Powder Coated NFPA Blue. Other colors on request

Part No./Size	Dimensions	Weight
HFS-15	10" x 12" x 16"	8 lbs
HFS-25	10" x 12" x 16"	8 lbs
HFS-30	10" x 12" x 16"	8 lbs
HFS-40	10" x 16" x 26"	19 lb
HFS-45	10" x 16" x 26"	19 lbs
HFS-50	10" x 16" x 26"	19 lbs
HFS-60	10" x 16" x 26"	19 lbs

Barrel Strainers

Husky® Barrel Strainers are built with an all-aluminum construction for great weight savings and strength. Get high flow and quality in one package. Powder Coated NFPA Blue. Other colors on request.



Part No./Size	Dimensions
HBS-25NH	2.5"
HBS-3NH	3"
HBS-4NH	4"
HBS-45NH	4.5"
HBS-5NH	5"
HBS-6NH	6"

Power Jet Siphons

Husky® Power Jet Siphons are built with an all-aluminum construction for great weight savings and strength. Buy a water transfer device you can count on. Powder Coated NFPA Blue. Other colors on request.

Part No./Size	Dimensions
HJS-4NH	4"
HJS-45NH	4.5"
HJS-5NH	5"
HJS-6NH	6"



Low Level Strainers

Husky® Portable Containment Low Level Strainers are manufactured with an all aluminum construction for durability and lightweight. We use aircraft quality 6061-T6 aluminum, no castings. Husky® Strainers will meet or exceed flow rates of any other strainers on the market.

Features

- ★ All Aluminum 6061-T6 Construction. Lightweight and Easy To Handle
- ★ 1 ½" - 6" Sizes Available, Male Or Female Threads
- ★ Female NH (NST) Threads Are Standard. Any Threads Available
- ★ 1 ½" Water Transfer (Jet Siphon) On Sizes 4" - 6"
- ★ Storz and Camlock Fittings Available
- ★ Maximum Flow
- ★ Powder Coated NFPA Blue. Other colors on request

Part No.	Dimensions	Weight
HLLS-15	12" x 12" x 10"	7 lbs
HLLS-25	12" x 12" x 10"	7 lbs
HLLS-30	12" x 12" x 10"	7 lbs
HLLS-40	15 1/2" x 15 1/2" x 11"	11 lbs
HLLS-45	15 1/2" x 15 1/2" x 11"	11 lbs
HLLS-50	15 1/2" x 15 1/2" x 11"	11 lbs
HLLS-60	15 1/2" x 15 1/2" x 11"	11 lbs



PVC Suction Hose, Soft Suction Hose, LDH Supply Hose, Etc.

Husky® Portable Containment offers many types of fire hose that is built with Durability, Flexibility and Weight Savings at the forefront. Made in the USA.

- ★ Standard hard and soft suction hose length is 10'. Attack hose comes in 50' or 100' lengths. LDH hose comes in 25', 50' and 100' lengths
- ★ Standard fittings for suction hose are long handle female / rocker lug male
- ★ Standard soft suction and LDH hose is rubber covered and attack hose is EPDM rubber.
- ★ All hoses available in other materials and configurations.
- ★ Rocker lugs, storz and camlock fittings available.



Part No. Hard Suction	Part No. Soft Suction Hose	Part No. Attack Hose	Part No. LDH Supply Hose
HSLH-150NH (1.5")	SSLH-150NH (1.5")	AHR-15050NH (1.5", 50')	LDH-4S25 (4" Storz. 25')
HSLH-250NH (2.5")	SSLH-250NH (2.5")	AHR-150100NH (1.5", 100')	LDH-5S25 (5" Storz. 25')
HSLH-300NH (3")	SSLH-300NH (3")	AHR-20050NH (2", 50')	LDH-4S50 (4" Storz. 50')
HSLH-400NH (4")	SSLH-400NH (4")	AHR-200100NH (2", 100')	LDH-5S50 (5" Storz. 50')
HSLH-450NH (4.5")	SSLH-450NH (4.5")	AHR-25050NH (2.5", 50')	LDH-4S100 (4" Storz. 100')
HSLH-500NH (5")	SSLH-500NH (5")	AHR-250100NH (2.5", 100')	LDH-5S100 (5" Storz. 100')
HSLH-600NH (6")	SSLH-600NH (6")	AHR-30050NH (3", 50')	

90 Degree Sweeping Style Elbow

Husky®'s all aluminum 90 degree elbow works great with our Skinny™ Tank and Leading Edge™ Tank. The elbows allow you to run hard suction hose to your folding frame tank without having it take up needed space in the road you are set up on.

Part No./Size	Dimensions	Part No./Size	Dimensions
HE-40NH	4"	HE-50NH	5"
HE-45NH	4.5"	HE-60NH	6"





AQUA Tanks (Aluminum Quick Assemble Tank)

Husky® Portable Containment's AQUA Tank gives you the best of both worlds, a rigid frame and portability. The AQUA Tank fits into its own storage bag for easy handling and compact storage. The rigid top (Aqua Tank Type I only has top rail) and bottom rails give the strength for throwing hoses over the top, no hose stand needed. The frame pieces are built from 6061 aircraft quality aluminum tubing. The corners are fitted with high quality stainless steel spring snaps (Aqua Tank II & III) which allow the top and bottom rail pieces to lock into place. No pins or wires to fight with and **NO TOOLS NEEDED!** Easy set up.

Easy Lift Handles
Published Patent Pending

Here at Husky® Portable Containment, we work hard — and we know you do, too. Husky's Easy Lift Handles make your job easier. With our heavy-duty handles attached to the floor of our folding tanks, tank tear-down not only takes less effort, but also saves valuable time and manpower. You can be assured that our Easy Lift Handles are made with the same attention to quality and durability that makes Husky® famous. All of our AQUA Tanks come equipped standard with Easy Lift Handles, another way we offer the best value available in a portable AQUA tank.

AQUA Tank Type I

Material Options

- ★ Vinyls: 22 oz. Red, Yellow, Blue, Orange, Green, Black, and *Lime Green*.
- ★ EXLON®: 22 oz. Only, Colors: Red and Yellow

Features

- ★ **Easy Lift Handles** (Patent Pending-Published) come RF welded to every AQUA Tank floor
- ★ All aluminum frame work, 6061-T6 1" schedule 40 aluminum tubing
- ★ Quick release 10" diameter drain tube with easy pull through strap
- ★ 250 gal. to 2000 gal. come standard with one drain tube
- ★ 2500 gal. and up come standard with two drain tubes
- ★ Storage bag
- ★ Special labeling at no charge (one per tank)
- ★ Options: 28 oz. floor material. Additional drain tubes or handles are available. Threaded couplings can be installed, storz or camlock fittings.

Part No.	Assembled Size	Stored Size	Weight
AT-250	3'9" x 3'9" x 30"	10" dia. x 48"	35 lbs.
AT-500	5'8" x 5'8" x 30"	12" dia. x 48"	42 lbs.
AT-1000	8' x 8' x 30"	14" dia. x 48"	61 lbs.
AT-1500	10' x 10' x 30"	14" dia. x 60"	80 lbs.
AT-2000	11' x 11' x 30"	14" dia. x 64"	87 lbs.
AT-2500	12' x 12' x 30"	17" dia. x 48"	103 lbs.
AT-3000	13' x 13' x 30"	17" dia. x 48"	113 lbs.

AQUA Tank Type II

Husky® Portable Containment's AQUA Tank gives you the best of both worlds. a rigid frame and portability. The AQUA Tank Type II fits into its own storage bag for easy handling and compact storage. The rigid top and bottom rails give the strength for throwing hoses over the top, no hose stand needed. The frame pieces are built from 6061 aircraft quality aluminum tubing. The corners are a slip in fit, which after the liner is installed, allows the top and bottom rail pieces to lock into place. No pins or wires to fight with and NO TOOLS NEEDED! Easy set up.

- ★ 2" MPT Rigid Female Flange standard (other fittings available)



Material Options

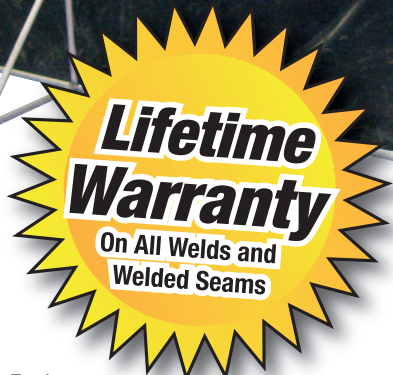
- ★ Vynils: 22 oz. Red, Yellow, Blue, Orange, Green, Black, and *Lime Green*.
- ★ EXLON®: 22 oz. Only, Colors: Red and Yellow
- ★ XR-5 8130 30 oz. Chemical & Fuel Resistant - Black Only

Part No.	Assembled Size	Stored Size	Weight
ATII-100	3' x 3' x 24" high	38" x 8"	39 lbs.
ATII-250	4' x 4' x 27"	50" x 8"	47 lbs.
ATII-500	6 sides/ ea. side 38" x 34" high	40" x 10"	61 lbs.
ATII-1000	6 sides/ ea. side 52" x 34"	54" x 10"	77 lbs.
ATII-1500	8 sides/ ea. side 48" x 34"	50" x 10"	85 lbs.
ATII-2000	8 sides/ ea. side 59" x 34"	61" x 12"	113 lbs.
ATII-2500	8 sides/ ea. side 63" x 34"	63" x 14"	129 lbs.
ATII-3000	8 sides/ ea. side 67" x 34"	67" x 14"	137 lbs.



AQUA Tank Type III

Husky®'s Aqua Tank Type III is an all aluminum slip together type frame. There are corner posts and uprights every 6 – 8 feet. The uprights are designed with structural outboard supports which allow these tanks to be built up to 4 feet in height and have an unlimited capacity. We have many liner materials to choose from assuring you will get the appropriate liner for your application. The Aqua Tank Type III is easy to set up and is great for secondary containment or oil spill cleanup efforts and comes with storage bags.



Husky® Portable Containment stands behind our products with an industry leading lifetime warranty on all welds and welded seams. We will repair or replace any tank if a seam or weld comes apart or breaks. Feel secure and safe with your portable tanks.

Put A Husky® On Your Team Today!



www.huskyportable.com

(800) 260-9950 • (918) 534-0002

Portable Tank Rack

Features

- ★ All Sizes
- ★ Manually Operated
- ★ Easy To Install, Bolts Right In
- ★ Diamond Plate Windbreaks Optional (Call for details)
- ★ Stainless Steel "T" Button Handles or Vertical Toggle Lock Clamps
- ★ All Stainless Steel Construction
- ★ Aluminum Racks Available

Part No.	Size	Weight
TR-1000S	1000 Gallon Tank Rack	57 lbs.
TR-1500S	1500 Gallon Tank Rack	64 lbs.
TR-2100S	2100 Gallon Tank Rack	66 lbs.
TR-2500S	2500 Gallon Tank Rack	68 lbs.
TR-3000S	3000 Gallon Tank Rack	70 lbs.
TR-3500S	3500 Gallon Tank Rack	72 lbs.
TR-4000S	4000 Gallon Tank Rack	81 lbs.
TR-5000S	5000 Gallon Tank Rack	83 lbs.

**Lifetime
Warranty**
On All Welds and
Welded Seams

Supply Line Brackets

Features

- ★ Sizes, 1 1/2" to 5", Male Or Female Threads, Female NH (NST) Threads Are Standard. Any Threads Available
- ★ Single and Double Supply Line Brackets Available
- ★ Storz and Camlock Fittings Available
- ★ Heavy Duty Clamps With Tabs For Securing To Your Frame
- ★ Fits Any Type Of Frame and Any Manufacturers Frame
- ★ Tested to 200 PSI

Part No.	Weight
SLB-15NH (Single)	3 lbs.
SLB-25NH	3 lbs.
SLB-30NH	4 lbs.
SLB-40NH	10 lbs.
SLB-45NH	11 lbs.
SLB-50NH	11 lbs.
SLB-15DBLNH (Double)	4 lbs.
SLB-25DBLNH	5 lbs.
SLB-30DBLNH	5 lbs.

Helicopter Water Tank

- ★ 72 gal., 134 gal., 240 gal. and 360 gal. models are made with nylon reinforced urethane
- ★ Heavy duty 40 oz. reinforced PVC construction
- ★ Available in "Potable" NSF 61 approved material for drinking water
- ★ 4" fill port allows quick filling and access to the inside of the tank if needed
- ★ Heavy duty 1" reinforced hose with durable spigot attached
- ★ Great for filling back packs or for drinking water (Potable model)
- ★ 240 & 360 gallon models (pictured) come standard with 2" MPT Female Rigid Flanges and one Ball Valve

Available on



www.huskyportable.com

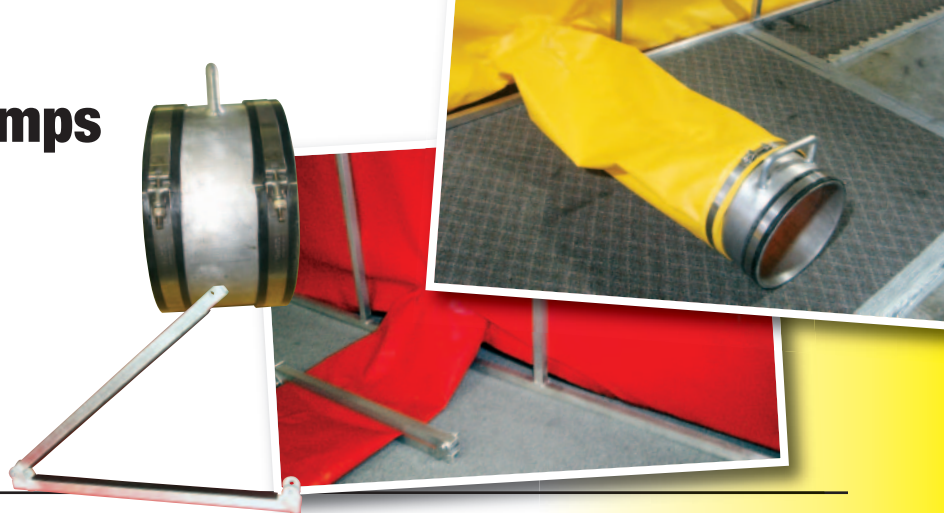
Drain Connectors & Clamps

Features

- ★ Lightweight, All Aluminum Construction
- ★ Nitrile Rubber Gaskets To Protect Your Sleeve
- ★ Stores Easily, Takes Up Minimal Space

Part No.

- ★ DM-10 (Connector) ★ DC-10 (Clamp)



Decon Shower Systems

Features

- ★ Set Up Anywhere Water is Available
- ★ PVC Shower, 4 Shower Heads, Handheld Sprayer
- ★ Optional Elevation Grids & Privacy Curtains Available
- ★ Lightweight, Collapsible, Quick & Easy Assembly
- ★ Pool Sizes—5'x5'x1' & 4'x8'x1'
- ★ Three Stage De-Con Shower System Available

Part No.

- ★ Steel Frame Pools: STFDP-48WS & STFDP-55WS
- ★ Aluminum Frame Pools: ALFDP-48WS & ALFDP-55WS
- ★ Vinyl w/ Sidewall Inserts Pool: DPV13-55WS



De-Con Pools (Any Size Available)

Features

- ★ Aluminum Or Steel Folding Frame Type
- ★ Self Supporting Type (Self Rising Sides)
- ★ All Air Wall Type
- ★ De-Con Shower Type
- ★ Sizes—3'x3', 4'x4', 5'x5', 4'x8', other sizes available
- ★ Heavy Duty 22 oz. PVC Liners standard color Blue (other colors available)

Part No.

- ★ Aluminum Frame Type
ALFDP-33, ALFDP-44, ALFDP-55, ALFDP-48
- ★ Self Supporting Type
HCP-75, HCP-100, HCP-150, HCP-200
- ★ Steel Frame Type: STFDP-33, STFDP-44, STFDP-55, STFDP-48
- ★ De-Con Shower Type: DCS-44, DCS-55





HUSKY[®]

Portable Containment

Husky[®] Portable Containment

397202 W. 1400 Road, PO Box 126, Dewey, OK 74029

E-Mail: sales@huskyportable.com

Tel (918) 534-0002 Fax (918) 534-1117

(800) 260-9950

www.huskyportable.com



“The Leader of the Pack”