

ALCO-LITE INDUSTRIAL PRODUCTS

Division of Aluminum Ladder Company

Industrial Access Equipment and Custom Fabrications

*Steel • Galvanized
Stainless • Aluminum
Fiberglass*



Aluminum Ladder Company is an integrated design, engineering, and fabrication company. We have been providing industrial fabrication and access equipment to most Fortune 500 companies for over 65 years – from single stepladders and process equipment to complex multi-story structures. Our heavy fabrication shop is AISC category II certified for complex structures, and all welders are AWS certified.

O
V
E
R
V
I
E
W



Steel • Galvanized • Stainless
Aluminum • Fiberglass

SELECTION GUIDE

TABLE OF CONTENTS

CONTENTS	PAGE NUMBER
Miscellaneous Fabrication	3-4
Component Fabrication	5
Crossovers	6
Stairs and Stair Towers	7
Handrail Systems	8
Pipe Bridges/Rack	9-10
Platforms	11
Mezzanines	12
Multi-Access Component Systems	13-14
Fiberglass Grating and Structural Fabrication	15
Fixed Ladders and Fixed Cage Ladders	16-18
Cages	19
Fixed Ladder Accessories	20
Process Workstands	21-23
Industrial Strength Compact Storage Ladders	24
500 lb. Capacity Stepladders	25-27
500 lb. Capacity Single and Extension Ladders	28-29
Ladder Options	30
Specialty Ladders	31
Custom Fabricated Access Equipment	32
Marine Gangways	33
Marine Ladders	34
Aviation/Transportation Access Equipment	35-38



Guaranteed
Turnkey Solution
Provider

MISCELLANEOUS FABRICATION

We can design, manufacture, and integrate equipment into your current existing facility or start from the ground and deliver a turnkey solution.

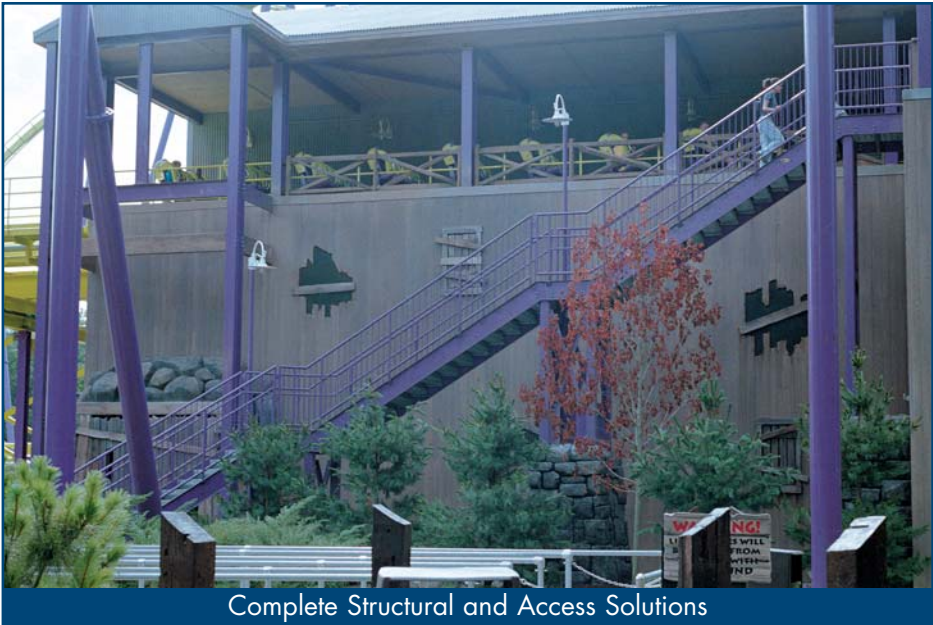


Complete Stairs and Handrail Systems for your Structural



Duct and Support Structures

Full
turnkey
solutions



Complete Structural and Access Solutions



Structural Supports

MISCELLANEOUS FABRICATION

COMPLETE CUSTOM SERVICES

Design • Detailing • Installation
Fabrication of structural and miscellaneous
steel, stainless, aluminum and fiberglass.



Expansion Projects



Process Equipment Support Structures



Equipment Support Structures



Canopies

Can
fabricate
onto your
existing
structures

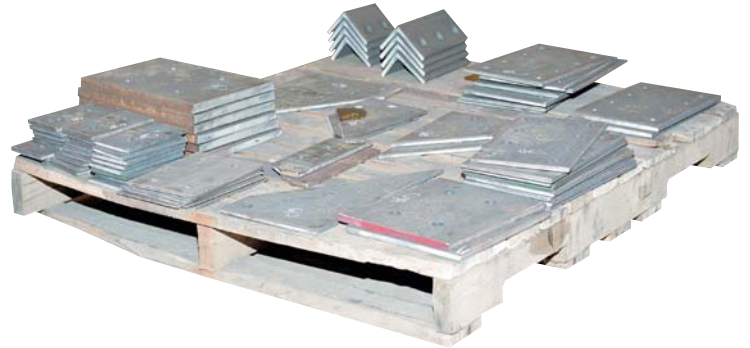
COMPONENT FABRICATION

Aluminum Ladder can deliver any size component fabricated out of aluminum, steel, stainless steel and galvanized steel to meet your needs.

Welding • Rolling • Burning
Drilling • Cutting



Component Fabrication



Structural Assembly Components



Cutting and Drilling



Oxy-Fuel and Plasma Cutting Table

CROSSOVERS

Custom fabricated crossovers are ideal for accessing those hard-to-reach repetitive task areas. Designed to meet your specific requirements.

- Available in aluminum, steel (galvanized, primed, mill, or painted,) stainless steel, and corrosion-resistant, non-conductive fiberglass.
- Can be customized to meet your specific needs.
- All units come standard with an aggressive tread decking for improved slip-resistance in all weather conditions.
- Available fully welded/assembled or knocked down.
- All units manufactured to meet and/or exceed all applicable OSHA and/or ANSI standards as we interpret them.



See pages
13-14 for
off-the-
shelf
crossover
components

STAIRS & STAIR TOWERS

Pre-engineered stair units offer quick, easy, and affordable access.

- Available in aluminum, steel (mill, primed, painted, or galvanized), stainless steel and fiberglass
- Can be customized to fit your requirements
- 45° slope
- Meets and/or exceeds applicable OSHA and/or ANSI standards as we interpret them



STANDARD STAIR UNITS WITH SLIP-RESISTANT TREADS

MODEL	VERT HEIGHT	TREAD HEIGHT	TREAD RUN	LBS. MILL STEEL	LBS. PRIMED STEEL	LBS. GALV. STEEL	LBS. ALUM. STEEL
ST199GS	99"	9"	9 1/2"	592	592	633	238
ST108GS	108"	9"	9 1/2"	633	633	678	252
ST117GS	117"	9"	9 1/2"	676	676	723	268
ST126GS	126"	9"	9 1/2"	732	732	784	285
ST135GS	135"	9"	9 1/2"	773	773	827	301
ST144GS	144"	9"	9 1/2"	818	818	876	316
ST153GS	153"	9"	9 1/2"	872	872	933	337
ST162GS	162"	9"	9 1/2"	938	938	1004	373
ST171GS	171"	9"	9 1/2"	978	978	1047	387
ST180GS	180"	9"	9 1/2"	1034	1034	1107	402
ST189GS	189"	9"	9 1/2"	1067	1067	1140	419
ST198GS	198"	9"	9 1/2"	1132	1132	1212	446

STANDARD STAIR UNITS WITH GRATING TREAD WITH NOSING

MODEL	VERT HEIGHT	TREAD HEIGHT	TREAD RUN	LBS. MILL STEEL	LBS. PRIMED STEEL	LBS. GALV. STEEL	LBS. ALUM. STEEL
ST199BG	99"	9"	9 1/2"	592	592	633	238
ST108BG	108"	9"	9 1/2"	633	633	678	252
ST117BG	117"	9"	9 1/2"	676	676	723	268
ST126BG	126"	9"	9 1/2"	732	732	784	285
ST135BG	135"	9"	9 1/2"	773	773	827	301
ST144BG	144"	9"	9 1/2"	818	818	876	316
ST153BG	153"	9"	9 1/2"	872	872	933	337
ST162BG	162"	9"	9 1/2"	938	938	1004	373
ST171BG	171"	9"	9 1/2"	978	978	1047	387
ST180BG	180"	9"	9 1/2"	1034	1034	1107	402
ST189BG	189"	9"	9 1/2"	1067	1067	1140	419
ST198BG	198"	9"	9 1/2"	1132	1132	1212	446



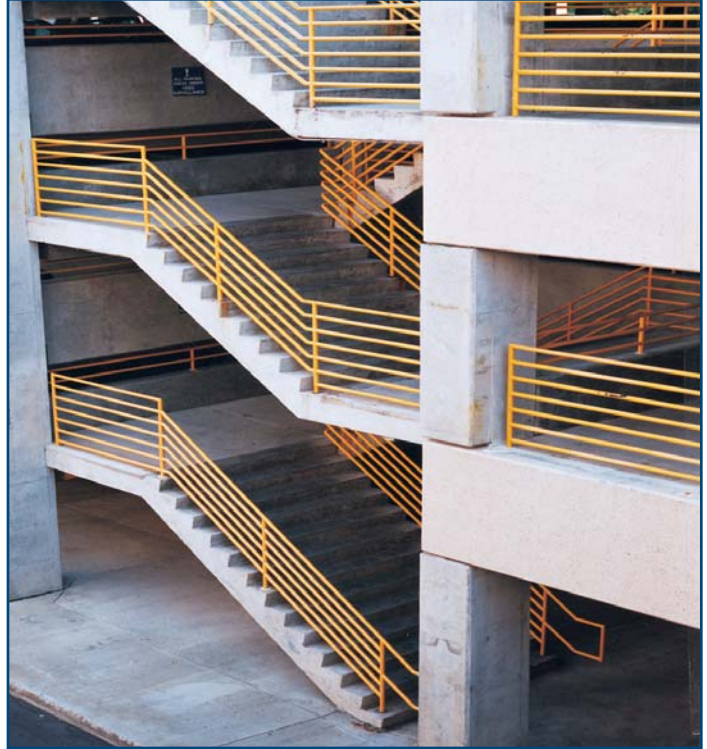
Stair Towers



Custom Stairs and Support Systems

Full turnkey solutions

HANDRAIL SYSTEMS



H
A
N
D
R
A
I
L

S
Y
S
T
E
M
S

PIPE BRIDGES/RACKS



Full
turnkey
solutions

PIPE BRIDGES/RACKS

Alco-Lite's pre-engineered pipe bridges/racks are the perfect solution to save you time and money on your rack installation job. Available in two styles with various options, allowing you to job fit the rack to the application.

Alco-Lite's pre-engineered racks are designed for:

- Maximum pipe diameter of 12" without insulation.
- Live load of 30 psf + 10 psf ice per level.
- Wind load per ASCE7 90 – 120 mph.
- Seismic load per ASCE7. Ground acceleration: Effective peak acceleration $A_a = .12$. Effective peak velocity-related acceleration $A_v = .11$.

Racks are not designed for longitudinal or lateral loads due to piping.

T-SUPPORT RACKS

Our most economical rack is designed for lighter loads and where space is limited.

- Single or double level design.
- Clear heights from 10' to 20'.
- Support spacing at 10', 15', or 20' per load and site requirements.
- Base plate mounting allows for easy setup.
- Standard cross arms are 4' long.
- Can be customized to meet your requirements.

BENT RACKS

Our strongest and most versatile rack allows for heavier loads and longer runs.

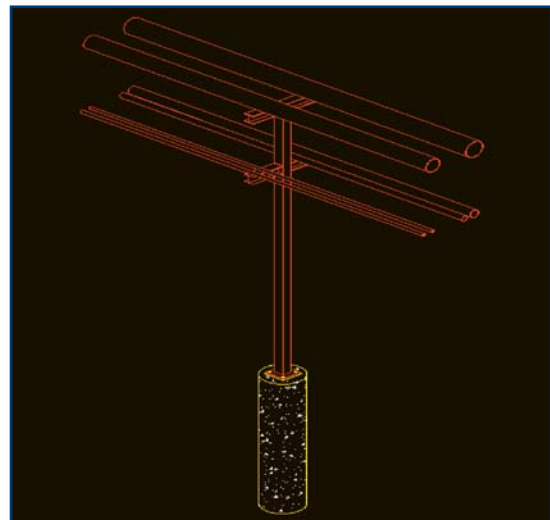
- Single, double, or triple level design adds flexibility and expendability to your site.
- Clear heights from 10' to 20'.
- Support spacing at 20', 25', 30', 40' or 50' per load and site requirements.
- Base plate mounting allows for easy set-up.
- Bent inside dimension of 5'-4", 7'-4", or 9'-4".
- Can be customized to meet your requirements.

FOUNDATION

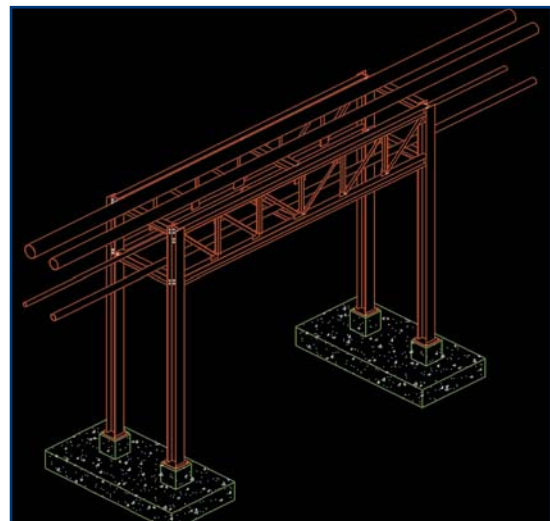
Alco-Lite utilizes either spread footings or pile foundations and can provide complete requirements and drawings. All foundations require a minimum soil bearing pressure of 2000 psf and have a minimum 2' of cover unless otherwise specified.



T-Support Racks



Double T-Support Racks



Bent Racks

Our
engineers
can
custom
design to
fit your
needs

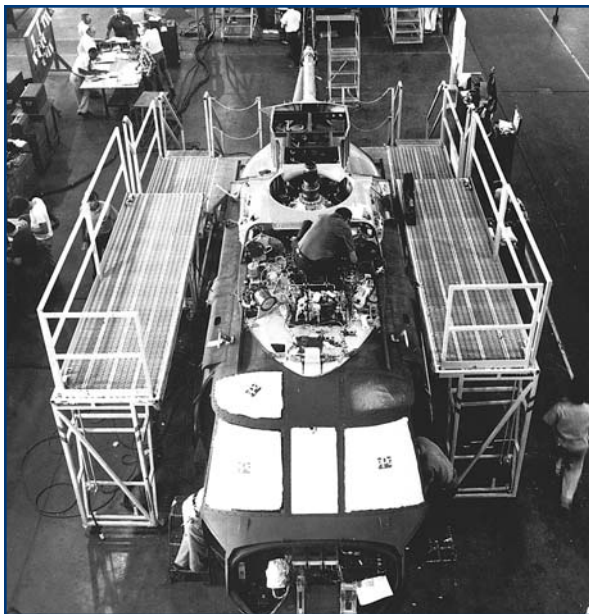
PLATFORMS
 VARIABLE HEIGHT • STATIC • COLLAPSIBLE • MANEUVERABLE

Custom fabricated platforms are ideal for accessing those hard-to-reach repetitive task areas. Designed to meet your specific requirements.

- Available in aluminum, steel (galvanized, primed, mill, or painted) stainless steel, and corrosion-resistant, non-conductive fiberglass.
- Can be customized to meet your specific needs.
- All units come standard with an aggressive tread decking for improved slip-resistance in all weather conditions.
- Available fully welded/assembled or knocked down.
- All units manufactured to meet and/or exceed all applicable OSHA and/or ANSI standards as we interpret them.
- Adjustable height platforms: manual, pneumatic or hydraulic.



See pages 13-14 for off-the-shelf platform components



MEZZANINES

Make the most of your limited space with our new line of quality mezzanine platforms. By utilizing unused overhead space, these convenient platforms can double your storage, office, and production area while saving your company the high costs of new construction. Use as work platforms or to add meeting rooms, break rooms, storage rooms, or offices quickly and economically. Each OSHA-approved platform has a 150 lb./sq. ft. load rating and comes in a variety of pre-engineered sizes to make it easier for you to order and erect. Also easy to relocate and add onto in the future.*

- Open or slip-resistant galvanized decking
- Integrated handrail, midrail, and toeboard system featuring 2" square handrail tubing
- All-bolt assembly requires no special tools or welding
- Affordable, pre-fabricated modular design
- Expandable in 8' or 12' increments
- 8'-2" ground clearance
- 30" wide, 45° stairway featuring handrails and Alco-Lite's GripGrate slip-resistant steps
- Optional 30" x 36" stairwell landing platform
- Optional Check-plate decking
- Handrails painted yellow, stairs and decking painted blue.

*Please notify manufacturer when expanding mezzanine(s) and have product number(s) available.

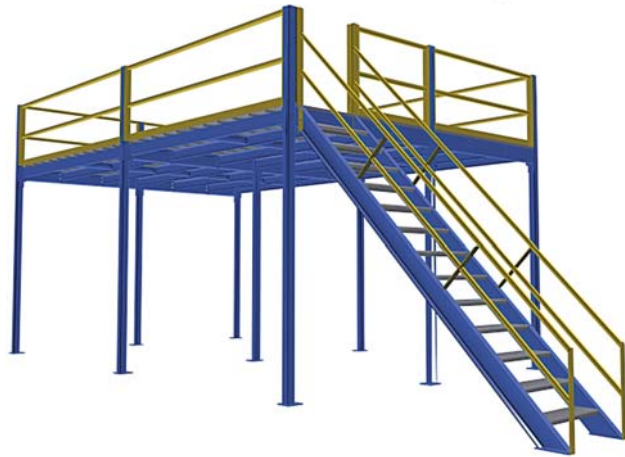
MODEL	SIZE	LBS.
MEZ-08-12	8' x 12'	2012
MEZ-08-24	8' x 24'	3437
MEZ-08-36	8' x 36'	4967
MEZ-08-48	8' x 48'	6497

MODEL	SIZE	LBS.
MEZ-16-12	16' x 12'	3361
MEZ-16-24	16' x 24'	6039
MEZ-16-36	16' x 36'	8717
MEZ-16-48	16' x 48'	11395

MODEL	SIZE	LBS.
MEZ-24-12	24' x 12'	4815
MEZ-24-24	24' x 24'	8641
MEZ-24-36	24' x 36'	12467
MEZ-24-48	24' x 48'	16293

MODEL	SIZE	LBS.
MEZ-STAIR	30"	492

MODEL	SIZE	LBS.
MEZ-LANDING	3' x 3'	275



MULTI-ACCESS COMPONENT SYSTEMS

One-of-a-kind system that offers off-the-shelf solutions to custom problems.

Use any combination of the seven components to build your custom platform, workstands or crossover.

The possibilities are endless.

- Standard 30" wide stair units and platforms.
- All platforms are pre-drilled at 30" increments to allow for easy configuration.
- Aggressive Alco-Lite® slip-resistant decking improves footing.
- Stair railing height 32"; platform railing 42" high with integrated midrail and 5" toeboard.
- 50 lbs./sq. ft. weight capacity.
- 45° stair slope with 9 1/2" deep steps allow for easy climbing.
- Stainless steel fasteners resist rust in most environments for extended life.
- Available in aluminum or painted steel.
- Galvanized, primed and stainless steel optional.

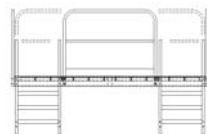


Patent Pending

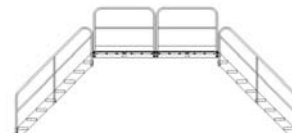
Unlimited configurations



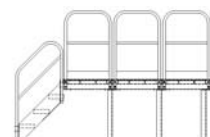
Unlimited Possibilities



DOUBLE SIDE ENTRY



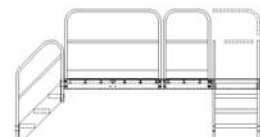
STANDARD CROSSOVER



WORK PLATFORM



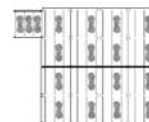
WORK PLATFORM



PLATFORM/CROSSOVER WITH SIDE ACCESS



MULTI-LEVEL PLATFORM



top view

MULTI-PLATFORM WORKSTATION

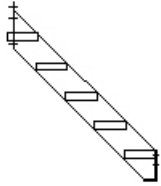


top view

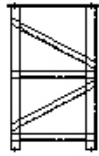
RIGHT ANGLE ACCESS PLATFORM

MULTI-ACCESS COMPONENT SYSTEMS

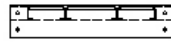
SYSTEM COMPONENTS



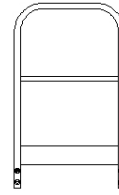
Stair Units (SU)



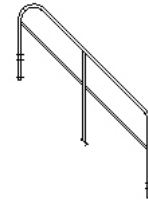
Platform End Supports (PS)



Platform Units (PU)



Platform Railing (PR)



Stair Railings (SR)

(MASU)	Stair Unit	18" to 81" high
(MAEU)	Platform End Support	18" to 81" high
(MAPU)	Platform Unit	30", 60", & 120" lengths
(MAPR)	Platform Railing	match platform length
(MASR)	Stair Railing	match stair unit number
(T-ADPT)	T-Adapter	to attach one platform to the side of another platform in a "T" or "L" configuration.
(S-ADPT)	Stair Adapter	to attach stair unit to platform when using only one handrail or no handrail

JUST FOLLOW THESE SIMPLE GUIDELINES:

1. Each platform must be supported at each end by either a stair unit (MASU) or end support (MAEU).
2. Use a T-Adapter (T-ADPT) to attach one platform to the side of another platform in a "T" or "L" configuration.
3. If you desire railing on only one side of a stair unit (MASU), you must use a stair adapter (S-ADPT) as a spacer to connect stair unit to the platform (use 2 if no railings are desired on either side).
4. Do not overload.
5. It is recommended that platforms be fastened to the supporting surface.
6. Consult your local codes for railing & safety guidelines.

STAIR UNITS

ALUMINUM MODEL	ALUMINUM LBS.	PAINTED STEEL MODEL	PAINTED STEEL LBS.	PLATFORM HEIGHT	# OF STEPS	PLATFORM CLEARANCE
MASU-02	9	MASU-02-P	23	18"	2	12
MASU-03	16	MASU-03-P	37	27"	3	21
MASU-04	24	MASU-04-P	51	36"	4	30
MASU-05	32	MASU-05-P	65	45"	5	39
MASU-06	40	MASU-06-P	79	54"	6	48
MASU-07	48	MASU-07-P	93	63"	7	57
MASU-08	56	MASU-08-P	107	72"	8	66
MASU-09	64	MASU-09-P	121	81"	9	75

STAIR RAILINGS

ALUMINUM MODEL	ALUMINUM LBS.	PAINTED STEEL MODEL	PAINTED STEEL LBS.
MASR-02	6	MASR-02-P	14
MASR-03	8	MASR-03-P	17
MASR-04	10	MASR-04-P	20
MASR-05	11	MASR-05-P	23
MASR-06	13	MASR-06-P	27
MASR-07	17	MASR-07-P	34
MASR-08	22	MASR-08-P	37
MASR-09	26	MASR-09-P	40

To be used with Stair Units (MASU and MASU-P)

PLATFORM END SUPPORTS

ALUMINUM MODEL	ALUMINUM LBS.	PAINTED STEEL MODEL	PAINTED STEEL LBS.	PLATFORM HEIGHT
MAEU-02	12	MAEU-02P	37	18"
MAEU-03	19	MAEU-03P	52	27"
MAEU-04	22	MAEU-04P	68	36"
MAEU-05	31	MAEU-05P	85	45"
MAEU-06	41	MAEU-06P	115	54"
MAEU-07	46	MAEU-07P	146	63"
MAEU-08	51	MAEU-08P	178	72"
MAEU-09	56	MAEU-09P	212	81"

PLATFORM RAILINGS

ALUMINUM MODEL	ALUMINUM LBS.	PAINTED STEEL MODEL	PAINTED STEEL LBS.
MAPR-30	14	MAPR-26-P	26
MAPR-60	21	MAPR-40-P	40

STAIR ADAPTERS

ALUMINUM MODEL	ALUMINUM LBS.	PAINTED STEEL MODEL	PAINTED STEEL LBS.
S-ADPT	1	S-ADPT-P	2

30" WIDE PLATFORM UNITS

ALUMINUM MODEL	ALUMINUM LBS.	PAINTED STEEL MODEL	PAINTED STEEL LBS.	PLATFORM LENGTH
MAPU-30	35	MAPU-30-P	62	30"
MAPU-60	61	MAPU-60-P	113	60"
MAPU-120	114	MAPU-120-P	212	120"

T-ADAPTERS

ALUMINUM MODEL	ALUMINUM LBS.	PAINTED STEEL MODEL	PAINTED STEEL LBS.
T-ADPT	3	T-ADPT-P	8

FIBERGLASS GRATING & STRUCTURAL FABRICATIONS



Fiberglass grating and structural fabrications are ideal for use where corrosion-resistant, non-conductive, and/or non-magnetic structures are required.

Fiberglass structures are:

- Corrosion-Resistant
- Non-Conductive - Thermally and Electrically
- Non-Magnetic - Electromagnetic Transparency
- High Strength
- Dimensionally Stable
- Virtually Maintenance Free
- Easy to Assemble

Virtually any type of structure can be manufactured from EXTREN® fiberglass pultrusions in three different grades.

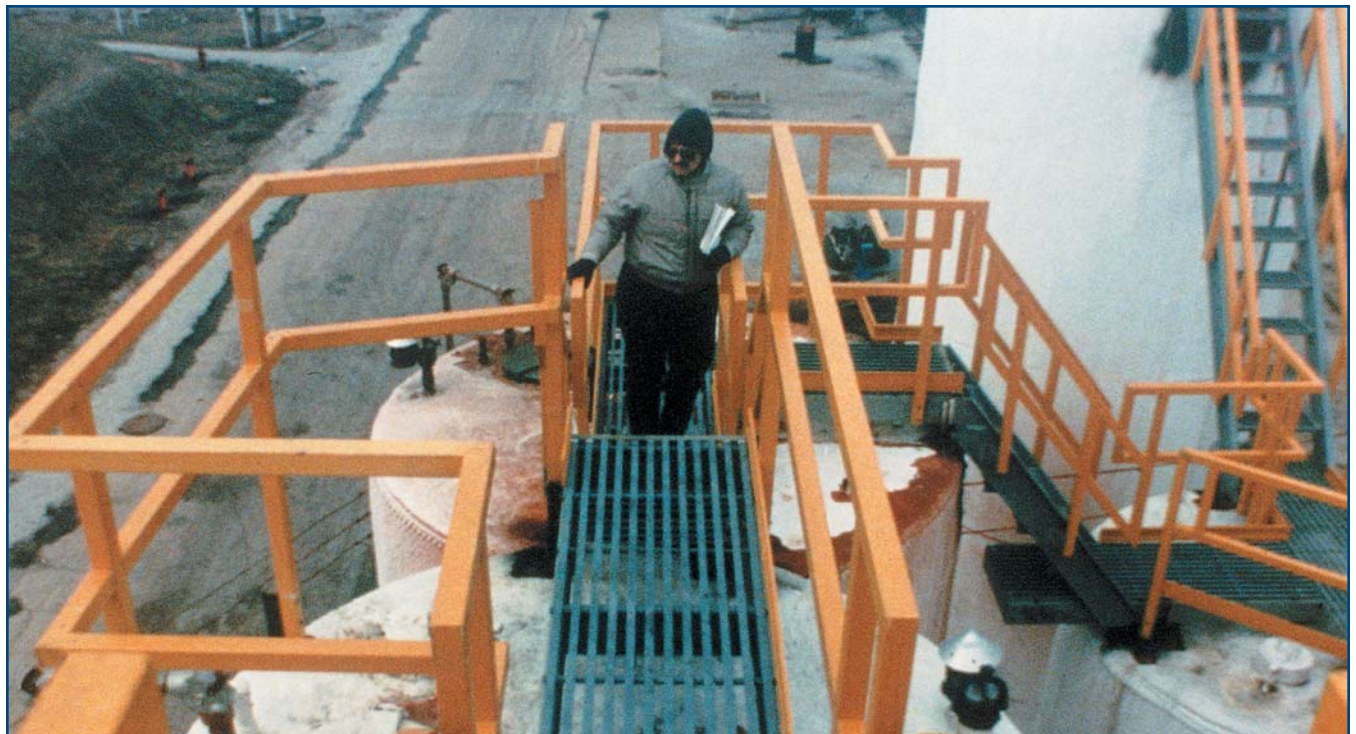
- EXTREN® 500 - An all-purpose line utilizing a polyester resin.
- EXTREN® 525 - An all-purpose line utilizing a fire retardant isophthalic polyester resin with UV inhibitor.
- EXTREN® 625 - A premium line that is both fire retardant and highly corrosion resistant, utilizing a vinyl ester with a UV inhibitor.



We use DURADECK® high strength fiberglass grating as our standard fiberglass decking material due to its superior strength and versatility of application.

We offer complete design, detail, fabrication, and installation of fiberglass structures.

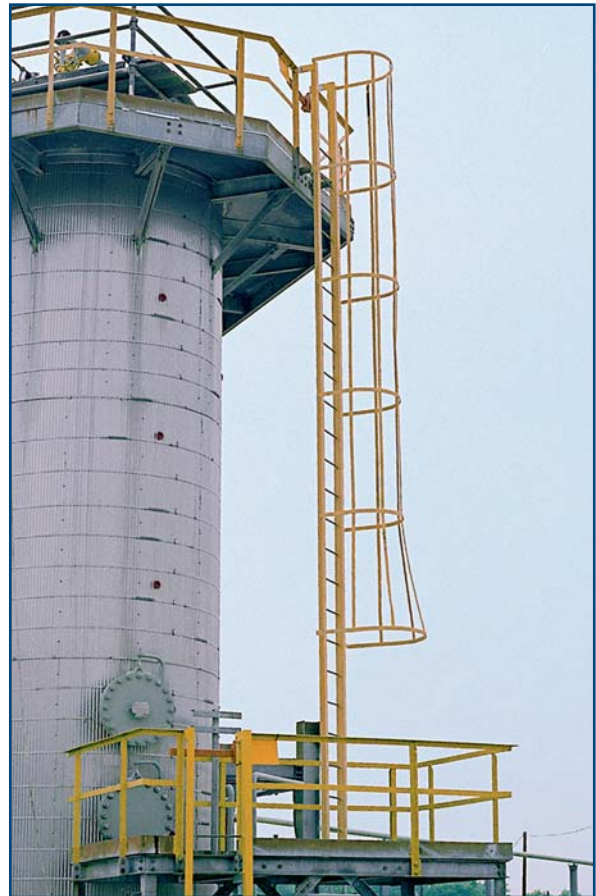
Call for a free, on-site consultation.



FIBERGLASS FIXED & FIXED CAGE LADDERS

300 lb. rated non-conductive fiberglass fixed and fixed cage ladders are ideal for all industrial and outdoor applications with corrosive environments.

- Industrial Type IA, 300 lb. duty rating.
- Meets and/or exceeds OSHA and ANSI A14.3 requirements as we interpret them.
- Non-conductive, sunlight-resistant, full fiberglass construction for use in corrosive environments, around electrically charged circuits, and areas where lightning strikes are a concern.
- Constructed of 2" square side rails and 1" diameter solid gritted bar rungs for long life and added durability.
- Non-corrosive 304 stainless steel fasteners.
- Deck mount base plates are standard. (Base wall mounting is optional.) Mounting brackets hold ladder 7" from the vertical surface and should be spaced 6' apart. (Anchors not included.)
- Available as a standard fixed ladder, fixed walk-through, standard fixed cage with optional left or right entry, and fixed walk-through with cage.
- Cage depth is 27" at the top and 32" at the bottom for easier access to the ladder.



FGREST Stand-off Rest Platforms

- Required by OSHA at least every 30'.
- 36" x 36" platform with 42" high railing with midrail and toeboard. Available as either left or right entry.

FGRAIL Walk-Through Ladder Returns

- Walk-through handrails allow for easier access to roof or platform.
- Extends 42" above the last ladder rung.

FGMT Base Wall Mounting Brackets

- Stainless steel ladder base mounting brackets designed to support the ladder base off the horizontal access surface. (Anchors not included.)

STEP-OFF POINT	STANDARD LADDERS MODEL	LBS.	STANDARD LADDERS WITH WALK-THRU MODEL	LBS.	CAGE LADDERS MODEL	LBS.	CAGE LADDERS WITH WALK-THRU MODEL	LBS.
3'	FGL-3	17	FGLW-3	36	-	-	-	-
4'	FGL-4	22	FGLW-4	42	-	-	-	-
5'	FGL-5	28	FGLW-5	47	-	-	-	-
6'	FGL-6	33	FGLW-6	53	-	-	-	-
7'	FGL-7	39	FGLW-7	58	-	-	-	-
8'	FGL-8	44	FGLW-8	64	-	-	-	-
9'	FGL-9	50	FGLW-9	69	-	-	-	-
10'	FGL-10	55	FGLW-10	75	FGLC-10	110	FGLWC-10	110
11'	FGL-11	61	FGLW-11	80	FGLC-11	121	FGLWC-11	121
12'	FGL-12	66	FGLW-12	86	FGLC-12	132	FGLWC-12	132
13'	FGL-13	72	FGLW-13	91	FGLC-13	143	FGLWC-13	143
14'	FGL-14	77	FGLW-14	97	FGLC-14	149	FGLWC-14	149
15'	FGL-15	83	FGLW-15	102	FGLC-15	165	FGLWC-15	165
16'	FGL-16	88	FGLW-16	108	FGLC-16	176	FGLWC-16	176
17'	FGL-17	94	FGLW-17	113	FGLC-17	187	FGLWC-17	187
18'	FGL-18	99	FGLW-18	119	FGLC-18	198	FGLWC-18	198
19'	FGL-19	105	FGLW-19	124	FGLC-19	209	FGLWC-19	209
20'	FGL-20	110	FGLW-20	130	FGLC-20	220	FGLWC-20	220
21'	-	-	-	-	FGLC-21	231	FGLWC-21	231
22'	-	-	-	-	FGLC-22	242	FGLWC-22	242
23'	-	-	-	-	FGLC-23	253	FGLWC-23	253
24'	-	-	-	-	FGLC-24	264	FGLWC-24	264
25'	-	-	-	-	FGLC-25	275	FGLWC-25	275
26'	-	-	-	-	FGLC-26	286	FGLWC-26	286
27'	-	-	-	-	FGLC-27	297	FGLWC-27	297
28'	-	-	-	-	FGLC-28	308	FGLWC-28	308
29'	-	-	-	-	FGLC-29	319	FGLWC-29	319
30'	-	-	-	-	FGLC-30	330	FGLWC-30	330

See page 18 for fixed cage ladders made from other materials

FIXED LADDERS



- Available in aluminum, steel (galvanized, primed, mill, or painted) and stainless steel to meet specific environmental requirements.
- Standard models meet and/or exceed OSHA standards as we interpret them.
- Other industry standards can be met upon request.
- Holdout brackets are standard. One pair per 10' on steel ladders; one pair per 6' on aluminum ladders.
- Can be customized to your specifications. Custom fabrications may require additional charges.
- Shipped fully assembled for quick, easy installation.

FIXED LADDERS

STEP-OFF POINT	ALUMINUM MODEL - FA LBS	MILL STEEL MODEL - FM LBS	PRIMED STEEL MODEL - FP LBS	GALVANIZED STEEL MODEL - FG LBS	STAINLESS STEEL MODEL - FSS LBS
4'	-	42	42	46	37
5'	-	51	51	55	41
6'	15	60	60	65	49
7'	16	68	68	74	56
8'	18	77	77	83	63
9'	20	86	86	93	71
10'	22	95	95	103	78
11'	24	107	107	116	88
12'	26	116	116	125	96
13'	29	124	124	134	103
14'	31	133	133	143	111
15'	33	142	142	153	119
16'	35	151	151	163	127
17'	38	160	160	172	133
18'	40	168	168	181	141
19'	42	177	177	191	148
20'	44	186	186	200	159
21'	-	198	198	213	166
22'	-	207	207	223	173
23'	-	216	216	233	181
24'	-	224	224	241	188

Specify model number by combining the alpha model number with the length; i.e., FMU-10

FIXED LADDERS: Flared Walk-Through Top

STEP-OFF POINT	ALUMINUM MODEL - FAW LBS	MILL STEEL MODEL - FMW LBS	PRIMED STEEL MODEL - FPW LBS	GALVANIZED STEEL MODEL - FGW LBS	STAINLESS STEEL MODEL - FSSW LBS
4'	-	52	52	56	45
5'	-	61	61	66	52
6'	21	70	70	76	60
7'	22	79	79	85	67
8'	24	87	87	94	74
9'	26	96	96	104	82
10'	28	105	105	113	89
11'	30	117	117	126	99
12'	32	126	126	136	107
13'	35	135	135	146	114
14'	37	143	143	154	122
15'	39	152	152	164	130
16'	41	161	161	174	138
17'	44	170	170	183	144
18'	46	179	179	193	152
19'	48	187	187	202	159
20'	50	196	196	211	170

Primed steel models have one coat of shop primer with no surface preparation

FIXED CAGE LADDERS

- Available in aluminum, steel (galvanized, primed, mill, or painted) and stainless steel to meet specific environmental requirements.
- Standard models meet and/or exceed OSHA standards as we interpret them.
- Other industry standards can be met upon request.
- Holdout brackets are standard. One pair per 10' on steel ladders; one pair per 6' on aluminum ladders.
- Can be customized to your specifications. Custom fabrications may require additional charges.
- Aluminum cages may be shipped "knocked down" for freight savings. All others shipped fully assembled for quick, easy installation.
- Ladders are available with either flared or non-flared top. Flared cage units may be manufactured to allow either front or side top access.

The perfect solution to reaching areas that require frequent access. Cage ladders require less area and are quicker and safer than conventional ladders.



FIXED LADDERS WITH FLARED WALK-THROUGH & CAGE

STEP-OFF POINT	ALUMINUM MODEL - FACW LBS	MILL STEEL MODEL - FMCW LBS	PRIMED STEEL MODEL - FPCW LBS	GALVANIZED STEEL MODEL - FGCW LBS	STAINLESS STEEL MODEL - FSSCW LBS
10'	65	188	188	203	180
11'	74	204	204	220	198
12'	81	220	220	237	224
13'	88	245	245	264	240
14'	94	261	261	281	257
15'	104	277	277	298	274
16'	110	293	293	315	300
17'	118	318	318	342	315
18'	124	334	334	360	332
19'	130	350	350	377	348
20'	140	369	369	397	368
21'	158	394	394	424	393
22'	165	410	410	441	408
23'	178	425	425	457	426
24'	185	441	441	475	442
25'	195	471	471	507	466
26'	202	487	487	524	483
27'	208	502	502	540	500
28'	215	518	518	557	520
29'	222	543	543	584	535
30'	232	562	562	605	560

Specify model number by combining the alpha model number with the length; i.e., FMCS-10

FIXED LADDER WITH CAGE & SIDE EXIT

STEP-OFF POINT	ALUMINUM MODEL - FACS LBS	MILL STEEL MODEL - FMCFS LBS	PRIMED STEEL MODEL - FPCFS LBS	GALVANIZED STEEL MODEL - FGCFS LBS	STAINLESS STEEL MODEL - FSSCS LBS
10'	108	293	293	315	269
11'	114	309	309	333	285
12'	124	337	337	363	305
13'	133	353	353	380	331
14'	140	369	369	397	348
15'	144	385	385	414	367
16'	147	410	410	441	380
17'	163	426	426	458	405
18'	169	442	442	476	422
19'	177	458	458	493	437
20'	188	487	487	524	468
21'	194	503	503	541	482
22'	200	522	522	562	499
23'	207	538	538	579	515
24'	218	563	563	606	532
25'	224	571	579	623	558
26'	230	594	594	639	574
27'	240	611	611	657	-
28'	250	626	626	687	-
29'	259	652	652	701	-
30'	268	667	667	717	-

See page 19 for cage dimensions

Primed steel models have one coat of shop primer with no surface preparation



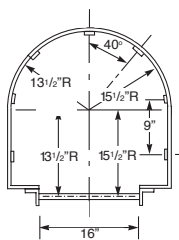
CAGES



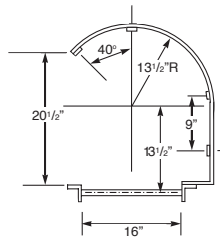
LENGTH OF CAGE	ALUMINUM MODEL - FAC LBS	MILL STEEL MODEL - FMC LBS	PRIMED STEEL MODEL - FPC LBS	GALVANIZED STEEL MODEL - FGC LBS	STAINLESS STEEL MODEL - FSSC LBS
3'	26	53	53	57	57
4'	30	57	57	61	61
5'	38	73	73	79	79
6'	42	81	81	87	87
7'	46	88	88	95	95
8'	51	94	94	101	101
9'	59	110	110	118	118
10'	63	117	117	126	126
11'	67	125	125	134	134
12'	72	132	132	142	142
13'	80	151	151	163	163
14'	84	155	155	167	167
15'	88	162	162	174	174
16'	93	169	169	181	181
17'	100	186	186	200	200
18'	105	195	195	213	213
19'	109	205	205	223	223
20'	113	216	216	236	236
21'	118	227	227	248	248
22'	126	238	238	260	260
23'	131	249	249	271	271
24'	136	260	260	283	283
25'	143	270	270	295	295
26'	148	281	281	307	307
27'	152	292	292	319	319

Primed steel models have one coat of shop primer with no surface preparation

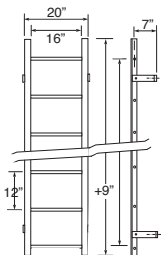
Designed to fit all Alco-Lite fixed ladders



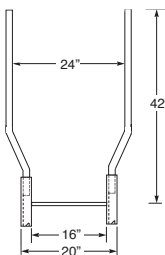
FIXED CAGE



FIXED CAGE SIDE EXIT



FIXED LADDER



FLARED TOP

- Designed for existing fixed ladders. Sized to fit Alco-Lite ladders. Alterations may be required to fit other ladders. Prices may vary depending upon alterations.
- Aluminum cages are shipped "knocked down" to reduce freight costs and risk of damage.
- Flared bottom opening provides easy access.
- Standard model meets and/or exceeds OSHA standards for general industry as we interpret them. Other industry standards; i.e., ANSI A14.3, can be met upon request. Please specify industry standard you require; otherwise, OSHA general industry will be assumed.
- Available with side exit (specify left or right).
- Can be customized to meet your needs.

FIXED LADDER ACCESSORIES

SWING GATES

- Spring loaded gate closes automatically preventing inadvertent backing out of opening
- Flared top and handrail required
- Can be customized to meet your needs



MODEL	MATERIAL	LBS
FAgate	Aluminum	14
FMgate	Mill Steel	30
FPgate	Primed Steel	30
FGgate	Galvanized Steel	31
FSSgate	Stainless Steel	25

SECURITY COVERS

- 6' high panel guards the first five rungs preventing unauthorized access
- Heavy-duty butt hinges allow the cover to be easily swung to the side for ladder access
- Locking clasp allows the use of a padlock to secure cover
- Can be customized to meet your needs



MODEL	MATERIAL	LBS
FAcover	Aluminum	22
FMcover	Mill Steel	54
FPcover	Primed Steel	54
FGcover	Galvanized Steel	56
FSScover	Stainless Steel	52

HANDRAIL TO ROOFS

- Flared walk-through allows easy, safe access to and from buildings or tanks
- Can be customized to meet your needs



MODEL	MATERIAL	LBS
AHrail	Aluminum	17
MHrail	Mill Steel	40
PHrail	Primed Steel	40
GHrail	Galvanized Steel	42
SSHrail	Stainless Steel	33
FGrail	Fiberglass	50

REST PLATFORMS

- Rest platform for use with offset cage ladder is required by OSHA standard 1910.27 at 30' maximum height intervals
- Available as left or right entry
- Can be customized to meet your needs
- Large 32" x 38" platform



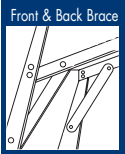
MODEL	MATERIAL	LBS
Arest	Aluminum	85
Mrest	Mill Steel	128
Prest	Primed Steel	128
Grest	Galvanized Steel	132
SSrest	Stainless Steel	125
FGrest	Fiberglass	175

Primed steel models have one coat of shop primer with no surface preparation

PROCESS WORKSTANDS

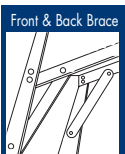
Lightweight, portable stair access equipment, designed and manufactured for the most demanding industrial applications.

675 SERIES: Super Heavy-Duty Aluminum Process Workstands



- Type 1A, 500 lb. load capacity.
- Solid channel side rail construction for superior strength.
- Extra large 20" x 20" slip-resistant coated platform adds utility and maximizes comfort for extended fixed height work.
- Extra heavy-duty aluminum skid plate feet protect side rails and provide a large contact area with the supporting surface.
- 27° slope with 10" risers and 6" deep step allows for easier climbing and descent.
- 30" high handrail for added safety.
- 5" Tilt-N-Roll casters allow for easy positioning and put all feet on the floor for climbing.
- Each step is supported with 4 gussets and secured with 16 rivets for added strength.
- 30" to 120" shipped fully assembled; 130" and 140" shipped "knocked down" to reduce freight costs.

MODEL	HEIGHT TO PLATFORM	BOTTOM SIZE	LBS
675-30	30"	24" x 40"	53
675-40	40"	25" x 47"	64
675-50	50"	26" x 54"	75
675-60	60"	27" x 61"	86
675-70	70"	29" x 68"	97
675-80	80"	30" x 71"	108
675-90	90"	31" x 81"	114
675-100	100"	32" x 88"	120
675-110	110"	33" x 95"	126
675-120	120"	35" x 102"	132
675-130	130"	36" x 109"	147
675-140	140"	37" x 116"	162



601 SERIES: Extra Heavy-Duty Aluminum Process Workstands



- Type 1A, 300 lb. duty rated.
- Open side rail construction to maximize strength and minimize weight.
- Large 18" x 14" embossed platform provides a comfortable working surface.
- Heavy-duty aluminum angle feet with thick rubber tread help to secure ladder during use.
- 27° slope with 12" risers and 6" deep step construction provides a functional platform stair ladder with a minimal footprint.
- 30" high handrail for added safety.
- 5" Tilt-N-Roll casters allow for easy positioning and put all feet on the floor when climbing.
- Each step is supported with 4 gussets and secured with 16 rivets for added strength.
- Shipped fully assembled.

MODEL	HEIGHT TO PLATFORM	BOTTOM SIZE	LBS
601-02	24"	22" x 30"	24
601-03	36"	23" x 37"	31
601-04	48"	25" x 45"	38
601-05	60"	26" x 52"	45
601-06	72"	28" x 60"	62
601-07	84"	29" x 67"	68
601-08	96"	31" x 75"	78
601-09	108"	32" x 82"	86
601-10	120"	34" x 90"	103
601-11	132"	35" x 97"	119
601-12	144"	37" x 105"	135

PROCESS WORKSTANDS

Lightweight, portable stair access equipment, designed and manufactured for the most demanding industrial applications.

700 SERIES: Extra Heavy-Duty Aluminum Process Workstands

- Industrial Type IA, 300 lb. duty rating.
- Meets and/or exceeds OSHA and ANSI requirements as we interpret them.
- Large 12" x 16" platform provides a comfortable work surface on which to stand for extended periods of time.
- 6" deep slip-resistant steps for added comfort and safety while climbing and working.
- Each step is braced front and back with 4 gussets and attached with 16 rivets per step for added strength and durability.
- 27° stair slope for easy climbing.
- Slip-resistant rubber treads attached to heavy-duty aluminum angle feet provide sure footing.
- Super heavy-duty aluminum construction. Designed and built to last.
- Optional Tilt-N-Roll casters for easy repositioning and transporting.
- Optional handrail available.



optional handrail



MODEL	HEIGHT TO PLATFORM	PLATFORM SIZE	BASE SIZE	LBS
720-20	20"	16" x 12"	21" x 24"	12
724-24	24"	16" x 12"	22" x 28"	13
730-30	30"	16" x 12"	24" x 32"	15
736-36	36"	16" x 12"	25" x 36"	16
748-48	48"	16" x 12"	27" x 43"	22

875: Rugged Non-Folding Aluminum Process Workstands

- Industrial Type IA, 300 lb. duty rating.
- Meets and/or exceeds OSHA and ANSI requirements as we interpret them.
- Large 12" x 18" embossed platform for easy access and added comfort.
- Flared legs provide a wide tip-resistant base for added safety.
- Slip-resistant rubber treads attached to heavy-duty aluminum angle feet provide sure footing.
- Super heavy-duty aluminum construction. Designed and built to last.



MODEL	HEIGHT	PLATFORM SIZE	BASE SIZE	LBS
875-12	12"	12" x 18"	18" x 24"	6

PROCESS WORKSTANDS

Ladder type workstands afford easy access within a smaller footprint saving valuable work space. Designed to meet the most demanding industrial access requirements.

802-24: Rugged Non-Folding Aluminum Process Workstand

- Industrial Type IA, 300 lb. duty rating
- Large 8" x 16" embossed platform
- 4" deep slip-resistant ribbed steps provide sure footing
- Each step is braced front and back with 4 gussets and attached with 16 rivets per step for added strength and durability
- Slip-resistant rubber treads attached to heavy-duty aluminum angle feet provide sure footing



MODEL	HEIGHT	PLATFORM SIZE	BASE SIZE	LBS
802-24	24"	16" x 8"	19" x 18"	7

803-36: Rugged Folding Aluminum Process Workstand

- Industrial Type IA, 300 lb. duty rating
- Large 8" x 16" embossed platform
- 4" deep slip-resistant ribbed steps provide sure footing
- Each step is braced front and back with 4 gussets and attached with 16 rivets per step for added strength and durability
- Slip-resistant rubber treads attached to heavy-duty aluminum angle feet provide sure footing
- Optional non-folding model available



MODEL	HEIGHT	PLATFORM SIZE	BASE SIZE	LBS
803-36	36"	16" x 8"	20" x 23"	12

900 SERIES: Double-Sided, Non-Folding Aluminum Workstand

- Industrial Type IA, 300 lb. duty rating
- Can be climbed from either side
- Large 12" x 16" one-piece platform
- 4" deep slip-resistant ribbed steps provide sure footing
- Each step is braced front and back with 4 gussets and attached with 16 rivets per step for added strength and durability
- Slip-resistant rubber treads attached to heavy-duty aluminum angle feet provide sure footing



MODEL	HEIGHT TO PLATFORM	TOTAL HEIGHT	PLATFORM SIZE	BASE SIZE	LBS
900-03	36"	36"	16" x 12"	19" x 35"	18
900-04	48"	48"	16" x 12"	22" x 44"	24

901-04: Double-Sided, Non-Folding Aluminum Workstand

- Industrial Type IA, 300 lb. duty rating
- Can be climbed from either side
- Large 19" x 22" one-piece embossed platform
- Spring loaded, weight activated, 3" casters allow for easy positioning
- 4" deep slip-resistant ribbed steps provide sure footing
- Each step is braced front and back with 4 gussets and attached with 16 rivets per step for added strength and durability
- Slip-resistant rubber treads attached to heavy-duty aluminum angle feet provide sure footing



MODEL	HEIGHT TO PLATFORM	TOTAL HEIGHT	PLATFORM SIZE	BASE SIZE	LBS
901-04	48"	68"	19" x 22"	25" x 51"	35

INDUSTRIAL STRENGTH COMPACT STORAGE LADDERS

SPL: Platform Ladders

Versatile, handy, compact folding utility platform ladder is ideal for industrial, commercial, or residential applications

- Industrial Type I, 250 lb. duty rating.
- Meets and/or exceeds OSHA and ANSI requirements as we interpret them.
- Large 13 1/2" x 15" slip-resistant diamond tread platform provides a comfortable standing area when working at a fixed height for extended periods of time.
- Aluminum construction is lightweight, easy to carry and set up.
- 30" high handrail provides an extra level of safety.
- Easily folds for compact storage.

MODEL	PLATFORM HEIGHT	BOTTOM WIDTH	DEPTH	PLATFORM SIZE	OVERALL HEIGHT	LBS
SPL-1	2'	19"	26"	13 1/2" x 15"	56"	15
SPL-2	3'	20"	32"	13 1/2" x 15"	68"	18



FSS: Folding Step Stool

Versatile, handy, compact folding utility step stool is ideal for industrial, commercial, or residential applications

- Industrial Type I, 250 lb. duty rating.
- Meets and/or exceeds OSHA and ANSI requirements as we interpret them.
- Oversized 7" x 15" steps offer generous standing area, reducing fatigue when working at fixed heights for extended periods of time.
- Aluminum construction is lightweight, easy to carry and set up.
- 18" high handrail provides an added measure of safety.

MODEL	PLATFORM HEIGHT	BOTTOM WIDTH	DEPTH	PLATFORM SIZE	OVERALL HEIGHT	LBS
FSS-1	2'	19"	23"	7" x 15"	42"	13



Handy,
lightweight,
and
compact

500 LB. CAPACITY SUPER HEAVY-DUTY STEPLADDERS

100H-HDC SERIES: Super Heavy-Duty Aluminum Stepladders



500 lb. super heavy-duty stepladder. Our top-of-the-line aluminum stepladder is designed and manufactured for those companies and applications that require the very best and when standard 300 lb. rated ladders just aren't enough.

- Certified and tested to a 500 lb. load capacity.
- Manufactured of marine grade aluminum alloy for maximum strength.
- Tool holes in top for added convenience.
- 4" deep slip-resistant ribbed steps provide sure footing.
- Each step is braced front and back with 4 gussets and attached with 16 rivets per step for added strength and durability.
- Back legs are heavily braced with gussets for added rigidity.
- Hinge connections are secured with steel shoulder bolts and self-locking nuts to permit tension adjustments.
- Heavy-duty spreader brace holds ladder securely in the open position.
- Large 1 1/2" wide aluminum angle feet with thick rubber tread provide sure footing.
- All components are field repairable which increases ladder life cycle and reduces costs.

MODEL	HEIGHT	OPEN DEPTH	BOTTOM WIDTH	LBS
100H-HDC-03	3'	24"	21"	17
100H-HDC-04	4'	31"	22"	21
100H-HDC-05	5'	37"	23"	26
100H-HDC-06	6'	42"	25"	31
100H-HDC-07	7'	49"	26"	37
100H-HDC-08	8'	55"	28"	41
100H-HDC-09	9'	60"	29"	45
100H-HDC-10	10'	66"	31"	51
100H-HDC-11	11'	73"	32"	55
100H-HDC-12	12'	79"	33"	60

P100H-HDC SERIES: Super Heavy-Duty Fiberglass Stepladders



500 lb. super heavy-duty stepladder. Our top-of-the-line non-conductive fiberglass stepladder is designed and manufactured for those companies and applications that require the very best and when standard 300 lb. rated ladders just aren't enough.

- Certified and tested to a 500 lb. load capacity.
- Non-conductive full channel fiberglass rail design adds an extra measure of safety when working around electricity.
- Aluminum back-up reinforcement plates at critical wear points increase ladder life and durability.
- Tool holes in top for added convenience.
- 4" deep slip-resistant ribbed steps provide sure footing.
- Each step is braced front and back with 4 gussets and attached with 16 rivets per step for added strength and durability.
- Back legs are heavily braced with gussets for added rigidity.
- Heavy-duty spreader brace holds ladder securely in the open position.
- Large 1 1/2" wide aluminum angle feet with thick rubber tread provide sure footing.
- All components are field repairable which increases ladder life cycle and reduces costs.

MODEL	HEIGHT	OPEN DEPTH	BOTTOM WIDTH	LBS
P100H03HDC	3'	26"	21"	22
P100H04HDC	4'	31"	22"	25
P100H05HDC	5'	36"	24"	28
P100H06HDC	6'	42"	25"	35
P100H07HDC	7'	49"	26"	38
P100H08HDC	8'	55"	28"	42
P100H09HDC	9'	60"	29"	50
P100H10HDC	10'	66"	31"	55
P100H11HDC	11'	73"	32"	63
P100H12HDC	12'	79"	34"	70

500 LB. CAPACITY SUPER HEAVY-DUTY DOUBLE-FRONTED STEPLADDERS

F900H-HDC SERIES: Super Heavy-Duty Aluminum Double-Fronted Stepladders

500 lb. super heavy-duty double entry ladder. Our top-of-the-line aluminum ladder is designed and manufactured for those companies and applications that require the very best and when standard 300 lb. rated ladders just aren't enough.

- Certified and tested to a 500 lb. load capacity each side.
- Manufactured of marine grade aluminum alloy for maximum strength.
- 4" deep slip-resistant ribbed steps provide sure footing.
- Each step is braced front and back with 4 gussets and attached with 16 rivets per step for added strength and durability.
- Hinge connections are secured with steel shoulder bolts and self-locking nuts to permit tension adjustments.
- Heavy-duty spreader brace holds ladder securely in the open position.
- Large 1 1/2" wide aluminum angle feet with thick rubber tread provide sure footing.
- All components are field repairable which increases ladder life cycle and reduces costs.

MODEL	HEIGHT	OPEN DEPTH	BOTTOM WIDTH	LBS
F900H-04-HDC	4'	38"	22"	23
F900H-05-HDC	5'	45"	23"	28
F900H-06-HDC	6'	53"	25"	34
F900H-07-HDC	7'	60"	26"	39
F900H-08-HDC	8'	68"	28"	45
F900H-09-HDC	9'	75"	29"	51
F900H-10-HDC	10'	82"	31"	57
F900H-11-HDC	11'	90"	32"	63
F900H-12-HDC	12'	97"	33"	70



PF900H-HDC SERIES: Super Heavy-Duty Fiberglass Double-Fronted Stepladders

Our top-of-the-line non-conductive, 500 lb. rated, fiberglass double entry ladder is designed and manufactured for those companies and applications that require the very best and when standard 300 lb. rated ladders just aren't enough.

- Certified and tested to a 500 lb. load capacity each side.
- Non-conductive full channel fiberglass rail design adds an extra measure of safety when working around electricity.
- Aluminum back-up reinforcement plates at critical wear points increase ladder life and durability.
- 4" deep slip-resistant ribbed steps provide sure footing.
- Each step is braced front and back with 4 gussets and attached with 16 rivets per step for added strength and durability.
- Heavy-duty spreader brace holds ladder securely in the open position.
- Large 1 1/2" wide aluminum angle feet with thick rubber tread provide sure footing.
- All components are field repairable which increases ladder life cycle and reduces costs.

MODEL	HEIGHT	OPEN DEPTH	BOTTOM WIDTH	LBS
PF900H-04HDC	4'	38"	22"	24
PF900H-05HDC	5'	45"	23"	29
PF900H-06HDC	6'	53"	25"	35
PF900H-07HDC	7'	60"	26"	40
PF900H-08HDC	8'	68"	28"	46
PF900H-09HDC	9'	75"	29"	52
PF900H-10HDC	10'	82"	31"	58
PF900H-11HDC	11'	90"	32"	64
PF900H-12HDC	12'	97"	33"	71



The very
best in
super
heavy-duty
stepladders

500 LB. CAPACITY SUPER HEAVY-DUTY PLATFORM LADDERS

400H-HDC SERIES: Super Heavy-Duty Aluminum Platform Ladders



500 lb. super heavy-duty platform ladder. Our top-of-the-line aluminum platform ladder is designed and manufactured for those companies and applications that require the very best and when standard 300 lb. rated ladders just aren't enough.

- Certified and tested to a 500 lb. load capacity.
- Manufactured of marine grade aluminum alloy for maximum strength.
- Large 14" x 17" embossed platform provides a safe, comfortable work surface on which to stand.
- 4" deep slip-resistant ribbed steps provide sure footing.
- Each step is braced front and back with 4 gussets and attached with 16 rivets per step for added strength and durability.
- Back legs are heavily braced with gussets for added rigidity.
- Hinge connections are secured with steel shoulder bolts and self-locking nuts to permit tension adjustments.
- Heavy-duty spreader brace holds ladder securely in the open position.
- Large 1 1/2" wide aluminum angle feet with thick rubber tread provide sure footing.
- All components are field repairable which increases ladder life cycle and reduces costs.

MODEL	HEIGHT TO PLATFORM	OVERALL HEIGHT	OPEN DEPTH	BOTTOM WIDTH	LBS
400H-03-HDC	3'	5'	37"	23"	25
400H-04-HDC	4'	6'	42"	25"	30
400H-05-HDC	5'	7'	49"	26"	35
400H-06-HDC	6'	8'	55"	28"	40
400H-07-HDC	7'	9'	60"	29"	45
400H-08-HDC	8'	10'	66"	31"	49
400H-09-HDC	9'	11'	73"	32"	54
400H-10-HDC	10'	12'	79"	33"	59

P400H-HDC SERIES: Super Heavy-Duty Fiberglass Platform Ladders



Our top-of-the-line non-conductive, 500 lb. rated fiberglass platform ladder is designed and manufactured for those companies and applications that require the very best and when standard 300 lb. rated ladders just aren't enough.

- Certified and tested to a 500 lb. load capacity.
- Large 14" x 17" embossed platform provides a safe, comfortable work surface on which to stand.
- Non-conductive full channel fiberglass rail design adds an extra measure of safety when working around electricity.
- Aluminum back-up reinforcement plates at critical wear points increase ladder life and durability.
- 4" deep slip-resistant ribbed steps provide sure footing.
- Each step is braced front and back with 4 gussets and attached with 16 rivets per step for added strength and durability.
- Back legs are heavily braced with gussets for added rigidity.
- Heavy-duty spreader brace holds ladder securely in the open position.
- Large 1 1/2" wide aluminum angle feet with thick rubber tread provide sure footing.
- All components are field repairable which increases ladder life cycle and reduces costs.

MODEL	HEIGHT TO PLATFORM	OVERALL HEIGHT	BOTTOM WIDTH	OPEN DEPTH	LBS
P400H-04-HDC	4'	6'	25"	42"	33
P400H-05-HDC	5'	7'	26"	49"	38
P400H-06-HDC	6'	8'	28"	55"	44
P400H-07-HDC	7'	9'	29"	60"	49
P400H-08-HDC	8'	10'	31"	66"	55
P400H-09-HDC	9'	11'	32"	73"	61
P400H-10-HDC	10'	12'	34"	79"	69

500 lb.
duty
rated
capacity

500 LB. CAPACITY ALUMINUM SUPER HEAVY-DUTY SINGLE & EXTENSION LADDERS

Our top-of-the-line aluminum extension ladder is designed and manufactured for those companies and applications that require the very best and when standard 300 lb. rated ladders just aren't enough.

IND-A: Single Aluminum Ladders

- Certified and tested to a 500 lb. load capacity.
- Manufactured of marine grade aluminum alloy for maximum strength.
- Truss style side rails improve rigidity and reduce racking.
- 1 1/4" O.D. slip-resistant serrated aluminum rungs.
- Bottom rung and side rail gussets reduce racking and increase rail support at foot assembly for added durability.
- Large aluminum swivel safety shoes with thick rubber treads may be used in either tread or spike down position for improved traction in many environments.
- All components are field repairable which increases ladder life cycle and reduces costs.

MODEL	LENGTH	WIDTH	LBS
IND-A-010-08	8'	19 1/16"	22
IND-A-010-10	10'	19 1/16"	28
IND-A-010-12	12'	19 1/16"	34
IND-A-010-14	14'	19 1/16"	41
IND-A-010-16	16'	19 1/16"	47
IND-A-010-18	18'	19 1/16"	53
IND-A-010-20	20'	19 1/16"	60

IND-A: Aluminum Extension Ladders

- Certified and tested to a 500 lb. load capacity.
- Manufactured of marine grade aluminum alloy for maximum strength.
- Truss style side rails improve rigidity and reduce racking.
- 1 1/4" O.D. slip-resistant serrated aluminum rungs.
- Bottom rung and side rail gussets reduce racking and increase rail support at foot assembly for added durability.
- Oversized 2 1/4" pulley and 1/2" poly rope allow for easy operation.
- Large aluminum swivel safety shoes with thick rubber treads may be used in either tread or spike down position for improved traction in many environments.
- All components are field repairable which increases ladder life cycle and reduces costs.

MODEL	UNEXTEND.	EXTEND.	WIDTH	LBS
IND-A-020-16	8'5"	13'5"	22 1/4"	58
IND-A-020-20	10'5"	17'5"	22 1/4"	70
IND-A-020-24	12'5"	21'5"	22 1/4"	92
IND-A-020-28	14'5"	25'5"	22 1/4"	105
IND-A-020-32	16'5"	29'5"	22 1/4"	120
IND-A-020-36	18'5"	33'5"	22 1/4"	128
IND-A-020-40	20'5"	37'5"	22 1/4"	144



500 lb. capacity - when 300 lbs. is just not enough

500 LB. CAPACITY FIBERGLASS SUPER HEAVY-DUTY SINGLE & EXTENSION LADDERS

Our top-of-the-line non-conductive fiberglass ladders are designed and manufactured for those companies and applications that require the very best and where there is a potential for the ladder to be used around electrically charged circuits.



Reduce the risk of electric shocks

IND-F: Single Fiberglass Ladders

- Certified and tested to a 500 lb. duty rating.
- Manufactured of non-conductive fiberglass side rails.
- 1 1/4" O.D. slip-resistant serrated aluminum rungs.
- Bottom rung and side rail gussets reduce racking and increase rail support at foot assembly for added durability.
- Large aluminum swivel safety shoes with thick rubber treads may be used in either tread or spike down position for improved traction in many environments.
- All components are field repairable which increases ladder life cycle and reduces costs.

MODEL	LENGTH	WIDTH	LBS
IND-F-410-08	8'	19 1/16"	26
IND-F-410-10	10'	19 1/16"	33
IND-F-410-12	12'	19 1/16"	37
IND-F-410-14	14'	19 1/16"	44
IND-F-410-16	16'	19 1/16"	51
IND-F-410-18	18'	19 1/16"	58
IND-F-410-20	20'	19 1/16"	65

IND-F: Fiberglass Extension Ladders

- Certified and tested to a 500 lb. load capacity.
- Manufactured of non-conductive fiberglass side rails.
- 1 1/4" O.D. slip-resistant serrated aluminum rungs.
- Bottom rung and side rail gussets reduce racking and increase rail support at foot assembly for added durability.
- Oversized 2 1/4" pulley and 1/2" poly rope allow for easy operation.
- Large aluminum swivel safety shoes with thick rubber treads may be used in either tread or spike down position for improved traction in many environments.
- All components are field repairable which increases ladder life cycle and reduces costs.

MODEL	UNEXTEND.	EXTEND.	WIDTH	LBS
IND-F-420-16	8'7"	13'7"	22 5/16"	65
IND-F-420-20	10'7"	17'7"	22 5/16"	76
IND-F-420-24	12'7"	21'7"	22 5/16"	90
IND-F-420-28	14'7"	25'7"	22 5/16"	101
IND-F-420-32	16'7"	29'7"	22 5/16"	118
IND-F-420-36	18'7"	33'7"	22 5/16"	135
IND-F-420-40	20'7"	37'7"	22 5/16"	142

LADDER OPTIONS

To provide even greater safety, the following options are available. Simply talk with your customer service representative for more information.



Top 2 steps painted red -- acts as a visual reminder to your employee NOT to over-climb

Special I.D. tags -- Identification tags provide permanent information for department, accounting code, inspection schedule, etc.



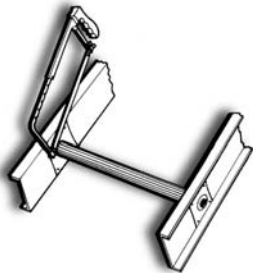
Tie-off rope -- can be used to increase ladder stability against tipping caused by worker over-reaching

Stainless steel nuts and bolts -- improve service life in corrosive environments



If you have other safety features that are your standards, let us know. We can do them.

RUNG REPAIR

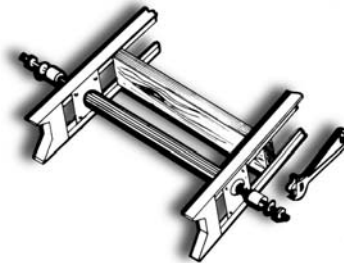


Cut out portion of damaged rung between ladder side rails



Insert hacksaw through rung section that's attached to ladder plate.

Carefully cut inner bushing until the rung becomes loose. In this manner, the rung can be removed without touching the side plate. A tap of a hammer will assist in removing the rung section.



Place a 2 x 4 in opening to maintain ladder width.

Place new rung through plates on each side.

Lubricate bushings.

Push bushing into place by means of steel rod, 2 large washers (1 1/2" O.D. or larger), and 2 nuts to fit rod. The rod should be 6" longer than the rung and threaded.

Bushings are forced into place by tightening the nuts gradually on each side. Threaded rod is available at most hardware stores. Be sure rod is centered in rung for ease of operation.

REQUIRED MATERIALS

- 2 x 4 board cut to fit snug inside width of the ladder.
- Replacement rung section and bushings.
- Hacksaw.
- 7/8" threaded steel rod.
- Three nuts to fit steel rod.
- Two washers 1 1/2" O.D. or larger.
- Lubrication oil.
- Mallet or hammer.

All Aluminum Ladder Company's products are covered by limited lifetime warranty

SPECIALTY LADDERS

TIL SERIES

FIL SERIES



TIL - Tank Inspection Ladders

- Designed for internal tank inspection and cleaning.
- Aluminum construction with field replaceable parts.
- 12" wide (13⁵/₈" over shoes) to facilitate entry into tank cars through narrow access hatches.
- Swivel safety shoes standard.
- Type 1A, 300 lb. duty rating.

MODEL	LENGTH	WIDTH	LBS
TIL-08	8'	12"	12
TIL-10	10'	12"	15
TIL-12	12'	12"	18
TIL-14	14'	12"	21
TIL-16	16'	12"	24
TIL-18	18'	12"	27
TIL-20	20'	12"	30

FIL - Folding Inspection Ladders

- Designed for use in closed-in areas with extremely narrow access routes; i.e., inside storage tanks, manholes, water treatment plants, etc.
- Folds to 5¹/₄" for easy maneuverability.
- Aluminum marine grade alloy construction.
- Safety shoes standard.
- Type 1A, 300 lb. duty rating.

MODEL	LENGTH		WIDTH		LBS
	OPEN	CLOSED	OPEN	CLOSED	
FIL-08	8'	8'11"	15 ¹ / ₂ "	5 ¹ / ₄ "	14
FIL-10	10'	11'2"	15 ¹ / ₂ "	5 ¹ / ₄ "	16
FIL-12	12'	13'4"	15 ¹ / ₂ "	5 ¹ / ₄ "	19
FIL-14	14'	15'7"	15 ¹ / ₂ "	5 ¹ / ₄ "	23

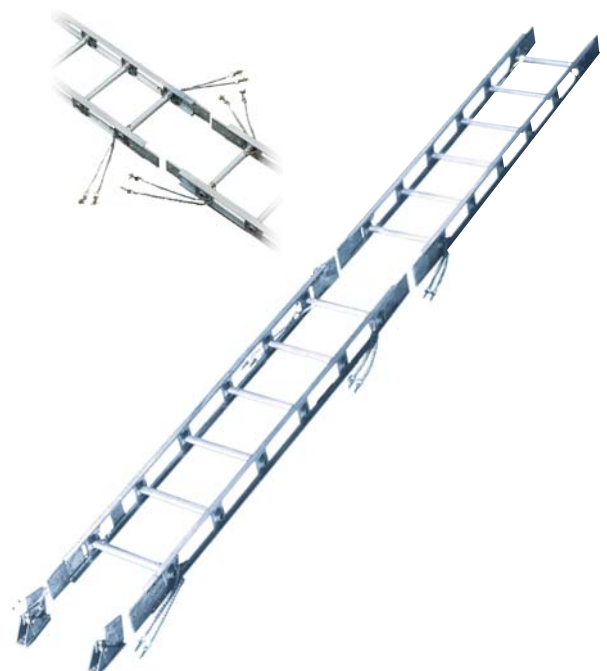


MAX STACK: Sectional Ladders

Designed for service/cleaning of chemical and smokestacks or any difficult-to-reach areas requiring variable height access.

- Sections can be combined to produce the desired length; ladder must be laterally supported every 30'.
- All-aluminum construction reduces weight and resists corrosion.
- Each ladder section has a male and a female end to enable easy connection utilizing wing nuts and thumb screws.
- 16" wide to facilitate ease of handling and access through hatches and manholes.
- Heavy-duty aluminum swivel safety shoes with thick rubber tread for added slip-resistance.

MODEL	LENGTH	WIDTH	LBS
MAX-03	3'	16"	14
MAX-04	4'	16"	17
MAX-05	5'	16"	20
MAX-06	6'	16"	23
MAX-07	7'	16"	26
MAX-08	8'	16"	29
MAX-09	9'	16"	32
MAX-10	10'	16"	35
MAX-12	12'	16"	41



CUSTOM FABRICATED ACCESS EQUIPMENT

GV LADDER

The GV was designed specifically to lift batteries into aircraft. The ladder is telescoping and collapsible and has an elevating tray capable of lifting 200 lb. via a hand-operated winch.



SEI LADDER

Designed to be an emergency evacuation ladder for elevating platforms, the SEI provides a safe exit alternative. Simply mount its bottom section to the floor and its top section to the elevating platform. Middle sections will extend as needed as the platform rises.



GE-1 LADDER

Constructed of aluminum and stainless steel, this non-magnetic, height-adjustable work stand was custom designed to meet the customers application. It can be safely used in magnetically sensitive area such as those found around power sources and hospitals.



AV-8 PLATFORM

The AV-8 for was designed and manufactured for use as Sea Harrier jet maintenance platforms onboard aircraft carriers. It is a two-tier, mobile scaffold featuring 8" locking swivel casters and all-aluminum construction.



MARINE GANGWAYS

Alco-Lite's marine gangways are designed and manufactured to meet the most demanding application requirements up to 2000 lbs. and a maximum of 70' in length.



GW-500 - Straight Truss Gangways

- Rugged equal height truss construction affords a distributed load capacity of 2000 lbs.
- Available in lengths to 70'.
- Constructed of 6000 series marine grade aluminum alloy for durability.
- Available with either a yellow poly rope or an all-aluminum handrail.
- 24" wide aluminum deck plate features a slip-resistant coating and aluminum angle cleats for better traction and added safety.
- 8" wheels or 5" rollers on dock side allow for variations in ship's float.
- Angle clips on ship side help to secure gangway from movement.
- Curved tread models available.
- Can be customized to fit your requirements.



GW-100 - Bowed Truss Gangways

- Bowed truss construction affords a distributed load capacity of 2000 lbs.
- Available in lengths from 20' to 40'.
- Constructed of 6000 series marine grade aluminum alloy for durability.
- Available with either a yellow poly rope or an all-aluminum handrail.
- 24" wide aluminum deck plate features a slip-resistant coating and aluminum angle cleats for better traction and added safety.
- 8" wheels on dock side allow for variations in ship's float.
- Angle clips on ship side help to secure gangway from movement.
- Can be customized to fit your requirements.



SGW - Stage Gangways

- Distributed load capacity of 750 lbs.
- Available in lengths from 12' to 40'.
- Economical, lightweight, and portable.
- Yellow poly rope handrails are standard – all-aluminum optional.
- Available in 24" or 28" wide perforated deck walking surface with angle cleats for better traction and added safety.
- 8" wheels on dock side allow for variations in ship's float.
- Angle clips on ship side help to secure gangway from movement.
- Can be customized to fit your requirements.

MARINE LADDERS

Designed for the most demanding marine access applications.

- Available as a single rung model (MBL) or double rung model (DMBL - as shown) with or without handrails.
- All-aluminum construction is lightweight and resists corrosion.
- 1 1/4" O.D. serrated rungs reduce slippage hazards.
- Open truss construction reduces weight and wind resistance.
- Heavy-duty swivel safety shoes with thick rubber tread improve footing on many surfaces.
- Heavy-duty 1 1/2" aluminum Tee extrusion rail construction for greater strength and rigidity.
- Handrail models - handrails start 4' from the bottom of the ladder.



Single Rung



Double Rung



MBL Single Rung Marine Ladder

MODEL	LENGTH	WIDTH	LBS
MBL-06	6'	19 1/16"	17
MBL-08	8'	19 1/16"	23
MBL-10	10'	19 1/16"	29
MBL-12	12'	19 1/16"	35
MBL-14	14'	19 1/16"	40
MBL-16	16'	19 1/16"	46
MBL-18	18'	19 1/16"	52
MBL-20	20'	19 1/16"	58
MBL-22	22'	19 1/16"	63
MBL-24	24'	22 1/4"	69
MBL-26	26'	22 1/4"	75
MBL-28	28'	22 1/4"	81
MBL-30	30'	22 1/4"	86

DMBL Double Rung Marine Ladder

MODEL	LENGTH	WIDTH	LBS
DMBL-06	6'	18 1/2"	21
DMBL-08	8'	18 1/2"	28
DMBL-10	10'	18 1/2"	35
DMBL-12	12'	18 1/2"	42
DMBL-14	14'	18 1/2"	49
DMBL-16	16'	18 1/2"	56
DMBL-18	18'	18 1/2"	63
DMBL-20	20'	18 1/2"	70
DMBL-22	22'	18 1/2"	77
DMBL-24	24'	23 7/8"	84
DMBL-26	26'	23 7/8"	91
DMBL-28	28'	23 7/8"	98
DMBL-30	30'	23 7/8"	105
DMBL-32	32'	23 7/8"	112
DMBL-34	34'	23 7/8"	119
DMBL-36	36'	23 7/8"	126
DMBL-38	38'	23 7/8"	133
DMBL-40	40'	23 7/8"	140

AVIATION/TRANSPORTATION ACCESS EQUIPMENT

AML - Aluminum All-Purpose Ladders For Use On All Types of Aircraft

- 4 gusset per step for strength
- 4" ribbed channel steps
- Channel side brace 2"x 1"
- 1 1/2" angle foot standard
- Primarily 6061-T6 marine grade alloy construction
- 3/16" solid aluminum rivets
- 20" x 20" ribbed extra-sturdy work platform
- 5" rigid Tilt -n-Roll casters standard
- Optional towing feature available
- 1" square aluminum tubing handrail available (optional safety chain available)
- Parts list available upon request
- Meets or exceeds all applicable OSHA and/or ANSI standards as we interpret them

MODEL	HEIGHT	BOTTOM		PLATFORM	WEIGHT
		WIDTH	DEPTH		
AML-03	3'	25"	42"	20" x 20"	40 lbs.
AML-04	4'	26"	50"	20" x 20"	50 lbs.
AML-05	5'	27"	57"	20" x 20"	57 lbs.
AML-06	6'	29"	65"	20" x 20"	64 lbs.
AML-07	7'	30"	72"	20" x 20"	72 lbs.
AML-08	8'	32"	79"	20" x 20"	77 lbs.
AML-09	9'	33"	87"	20" x 20"	80 lbs.
AML-10	10'	35"	94"	20" x 20"	87 lbs.
AML-11	11'	36"	102"	20" x 20"	93 lbs.
AML-12	12'	39"	109"	20" x 20"	101 lbs.
AML-14	14'	44"	124"	20" x 20"	120 lbs.
AML-16	15'	47"	139"	20" x 20"	138 lbs.



Safety Sign
Safety sign serves as a reminder

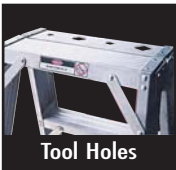


Durapad
Recommended optional foot

910-H - Double-Fronted Aluminum Stepladders

- 4 gusset per step for strength
- Double-fronted to allow use on either side
- Constructed primarily of 6061-T6 marine grade alloy
- 1 1/4" angle foot with heavy-duty skid resistance pad
- Meets/exceeds OSHA and ANSI standard A14.2 requirements for Type 1-A, 300 lb. duty rating as we interpret them
- Tool holes in cap for added convenience
- All parts replaceable; ladder can be repaired at your facility
- 1" x 2" channel side brace
- 5" Tilt-n-Roll casters

MODEL	HEIGHT	BOTTOM		WEIGHT
		WIDTH	DEPTH	
900HAIR-03	3'	21"	31"	20 lbs.
900HAIR-04	4'	22"	38"	25 lbs.
900HAIR-05	5'	23"	45"	30 lbs.
900HAIR-06	6'	25"	53"	36 lbs.
900HAIR-07	7'	26"	60"	41 lbs.
900HAIR-08	8'	28"	68"	47 lbs.
900HAIR-09	9'	29"	75"	53 lbs.
900HAIR-10	10'	31"	82"	59 lbs.
900HAIR-11	11'	32"	90"	65 lbs.
900HAIR-12	12'	33"	97"	72 lbs.
900HAIR-13	13'	35"	105"	76 lbs.
900HAIR-14	14'	36"	112"	81 lbs.
900HAIR-15	15'	38"	120"	86 lbs.
900HAIR-16	16'	39"	127"	91 lbs.



Tool Holes
Convenient tool holes in top platform



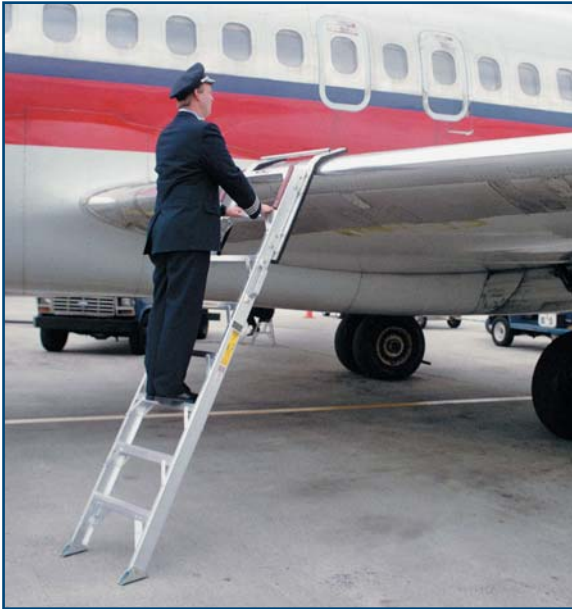
Tilt-n-Roll Casters
Tilt-n-Roll casters for easy positioning



Designed specifically for the aviation and transportation industries

AVIATION/TRANSPORTATION ACCESS EQUIPMENT

MD-80 - De-Icing Ladder



Designed to meet FAR 121.629 papa. C, for operation in de-icing conditions

Designed to facilitate the visual check for wing icing on the MD Super 80 series. Lightweight, yet rugged, the DI-80 ladder provides fast, dependable access for your inspection process.

- Heavy-duty rubber bumper pads are curved to rest on wing
- Aluminum construction
- Swivel safety shoes
- Handle for easy carrying
- 8' height - to match up to MD-80 wing
- Different sizes available to match other models of aircraft



MODEL	HEIGHT	WIDTH	WEIGHT
DI-08	8'	28"	48 lbs.

DC-10 - Hydraulic Ladder

Designed to provide easy, safe access to hydraulic systems of DC-10 aircraft

- Extended arms prop into wheel well or against strut for easy access
- Neoprene padding on inside of top and arms provide added protection to fuselage
- Brace arms extend 22" from ladder to support the platform away from face of work area
- Ladder is 30" wide at base for sturdy support; the platform tapers to 16" at top
- Construction is 6061-T6 marine grade aluminum for minimum upkeep and maximum strength
- 3 3/4" aluminum side channels for added support
- Slip-resistant feet provide sure footing



MODEL	HEIGHT	WIDTH	WEIGHT
DC-10	10'	38"	38

ABL - Aviation Ladder

This rigid, one-piece ladder is custom designed to easily fit into avionics hatch openings of all Airbus-manufactured aircraft, allowing quick and effortless entry and exit into this vital space. Its 8' height also makes it ideal for other maintenance and access applications such as engine inlet inspections on Boeing 727 S-Duct and blades or easy entry into the 727's cargo bay.

- All-aluminum, channel rail construction for strength, durability and light weight
- Thick rubber bumpers to protect fuselage and hatch from scratches
- Meets/exceeds ANSI and OSHA standards as we interpret them
- 1 1/4" slip-resistant rungs
- Swivel type shoes
- 300 lb. duty rating
- Field repairable



Designed to fit on tug

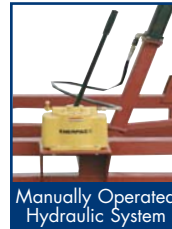
MODEL	HEIGHT	WIDTH	WEIGHT
AVL	8'	16 1/8"	25



AVIATION PLATFORMS

B1 - Variable Height Platforms

Variable height platform with self-leveling stairs is ideal for repetitive multi-height access. Originally designed and used by aircraft ground services, the B1 has found its way into the industrial and alternative transportation services market as a functional work access platform.



- Self-contained, manually operated hydraulic system requires no power and can be operated anywhere.
- Large 4' x 4' platform with slip-resistant surface and 42" high removable handrail system.
- 500 lb. capacity.
- 10" rigid casters on back and 10" swivel casters on front standard. Other wheel types and sizes optional.
- Base is 43" x 132", with a total weight of 1150 lbs.
- Platform height raises 3 1/2' to 10'
- Padded platform edges protect contact surface from damage.



B300-2 - Crew Access Stands

The B300-2 is the ideal crew access stand for your busy airport terminals. Its large 6' x 7' platform stands slightly over 8' tall and is designed to easily accommodate the opening arcs of most aircraft doors. Rear handrails are angled to ensure a close fit to the aircraft, and thick rubber padding protects the fuselage from costly marring. Fully directional swivel casters ensure maximum mobility even in tight spaces.

- 2 leveling jacks
- 12" rear wheels, 5" front swivel casters
- 36" wide, 9 1/2" deep slip resistant stairs
- 45° slope
- 42" Handrails on the platform
- Painted safety yellow
- Steel construction
- Platform back padded and tapered for protection of fuselage



WAS-1 - Wing Access Stands

Engineered to rest on top of an aircraft wing, the WAS-1 will ease the performance of routine wing maintenance and safety inspections. Simply use the built-in height adjustment mechanism to raise the upper work platform high enough to allow plenty of clearance, then slide the WAS-1 under the wing and lower the work platform back down to wing level. Rubber bumpers on the work platform's underside provides maximum protection from scratches and scrapes.

- Height adjustment from 162" to 168"
- 30" x 72" platform
- 8" rear wheels, 8" front swivel locking casters
- Available in aluminum or steel
- 2 leveling jacks
- 30" wide, 7" deep, slip resistant steps
- Platform equipped with 42" high handrail, midrail, and toeboard



TRUCK ACCESS LADDERS

Alco-Lite's truck access ladders provide safe, easy, and economical access to undocked box and flatbed trailers.

TAL-2 55° Slope Platform Truck Access Ladder

- 55° step slope and 7" deep steps provide easy access in tight quarters.
- Constructed of 3/4" square steel tube for durability.
- Platform height is designed to reduce tripping.
- Walk-through back is standard.
- 4" x 4" skid pads on front provide a sturdy base.
- 8" Tilt-n-Roll wheels allow for easy, one-person repositioning.
- 300 lb. capacity.

MODEL	HEIGHT TO PLATFORM	PLATFORM SIZE	STEP DEPTH	STEP WIDTH	LBS
TAL-2	45"	24" x 28"	7"	24"	121



TAL-4 45° Slope Platform Truck Access Ladder

- 45° step slope and 11³/₄" deep steps provide easy access.
- Constructed of 1" square tube steel for durability and long service life.
- Platform height is designed to reduce tripping.
- Walk-through back is standard.
- 4" x 4" skid pads on front provide a sturdy base.
- 8" Tilt-n-Roll wheels allow for easy, one-person repositioning.
- 300 lb. capacity.

MODEL	HEIGHT TO PLATFORM	PLATFORM SIZE	STEP DEPTH	STEP WIDTH	LBS
TAL-4	45"	24" x 30 ¹ / ₂ "	11 ³ / ₄ "	24"	160



TAL-10 55° Slope Aluminum Truck Access Ladder

- Lightweight, all aluminum construction allows for easy moving or repositioning. (steel optional)
- Ladder hooks into slots on trailer for support.
- Left side handrail is standard - specify if right side is required.
- 3" x 3" heavy-duty skid pads provide a secure base on most surfaces.
- 300 lb. capacity.

MODEL	HEIGHT TO TOP STEP	STEP DEPTH	WIDTH	LBS
TAL-10	47"	7"	17"	30



Safe, efficient truck access



**Aluminum
Ladder Company's
limited
LIFETIME
Warranty**

Products sold by Aluminum Ladder Company are warranted to be free of defects in materials and workmanship, exclusive of corrosion, damage from abuse or misuse, negligence, alteration, normal wear and tear, and improper installation. Liability under this warranty shall be limited to the repair or replacement of any defective work or material FOB Florence, South Carolina. Aluminum Ladder Company shall not be liable for any other damages or losses. The buyer's sole and exclusive remedy against Aluminum Ladder Company for any defective material or workmanship shall be for the repair or replacement of the defective parts or products as provided herein. No other remedy (including, but not limited to, incidental or consequential damages for lost profits, lost sales, injury to person or property, or any other incidental or consequential loss) shall be available to the buyer.

Represented by:

- Mobile Platforms*
- Miscellaneous Fabrication*
- Stairs & Stair Towers*
- Handrail Systems*
- Pipe Racks/Bridges*
- Crossovers*
- Platforms & Mezzanines*
- Marine Gangways*
- Fiberglass Grating*
- Fixed Cage Ladders*
- Process Workstands*
- Compact Storage Ladders*
- 500 lb. Rated Stepladders*
- 500 lb. Rated Extension Ladders*
- Specialty Ladders*
- Truck Access Ladders*
- Multi-Access Component Systems*
- Marine Ladders*
- Aviation Access Equipment*
- Component Fabrication*

ALCO-LITE INDUSTRIAL PRODUCTS

**Division of
Aluminum Ladder Company**

1-800-371-3408

1430 West Darlington Street
P.O. Box 5329,
Florence SC 29502
Fax: 843-662-6286
www: alcolite.com

