

<b>TESORO CIBOLA AIR TEST</b>		<b>SETTING</b>	<b>SETTING</b>	<b>SETTING</b>	<b>SETTING</b>	<b>SETTING</b>	<b>SETTING</b>	<b>SETTING</b>
July 2008 Sven S.		<b>1</b>	<b>2</b>	<b>3</b>	<b>4</b>	<b>5</b>	<b>6</b>	<b>7**</b>
<b>USA COINS</b>								
SILVER	DIME	6"	6.75"	8.5"	9.75"	9.25"	10.75"	9.25"
"	QUARTER	6.5	7	9	11	10	11.5	11
"	HALF	7	7.75	10	11.5	10.25	13	11.25
COPPER	PENNY	6	7.56	9	10.5	10	11.25	10.25
ZINC	PENNY	6.5	7.5	9.75	11.25	10.5	12.75	11
CLAD	NICKEL	7.5	8.75	10.75	11.75	11.75	12.5	13
"	DIME	6	7	8.5	10	9.5	10.5	11
"	QUARTER	6.75	7.25	9.75	10.25	10.25	11	12
"	HALF	7	8.25	10	11.25	11	11.25	12
\$1.00 COIN		7.25	8	9.25	10.75	10.5	13	12.5
<b>CANADIAN COINS</b>								
SILVER	HALF DIME	6"	6.75"	8"	9.75"	9.25"	10.25"	9"
NON SILVER	NICKEL	6.25	7	9.25	10.25	10	11	11
"	"	DIME	5.5	6.5	8.5	9	10.5	10.5
"	"	QUARTER	7	8	10	11	12	13
"	"	\$2.00 COIN	7.75	9.5	11	12.25	13.5	13
SWEDISH COPPER ORE 1/2 DIME SIZE		6	7.5	9	9.5	9	11	11.5
MEN'S 10K GOLD RING		8	8.5	11	12.5	12	13	13
SMALL 10K WHITE GOLD RING		6	6.5	8.5	9.25	9	11	11
.22 RIFLE BULLET		4.25	5.5	6.5	7.5	7.25	8	9

**SETTING #1-----SLIGHT THRESHOLD ----- SENSITIVITY 6 ----- DISC IRON**  
**SETTING #2----- " " ----- " 10 ----- " "**  
**SETTING #3----- " " ----- " 50% MAX BOOST --- " "**  
**SETTING #4----- " " ----- " 100% " " --- " "**  
**SETTING #5-----THRESHOLD AT 3 O'CLOCK " 50% " " --- " "**  
**SETTING #6----- " " " " " 100% " " --- " "**

Threshold setting past 3 o'clock position does not increase depth detection, no need to set it past 3 o'clock

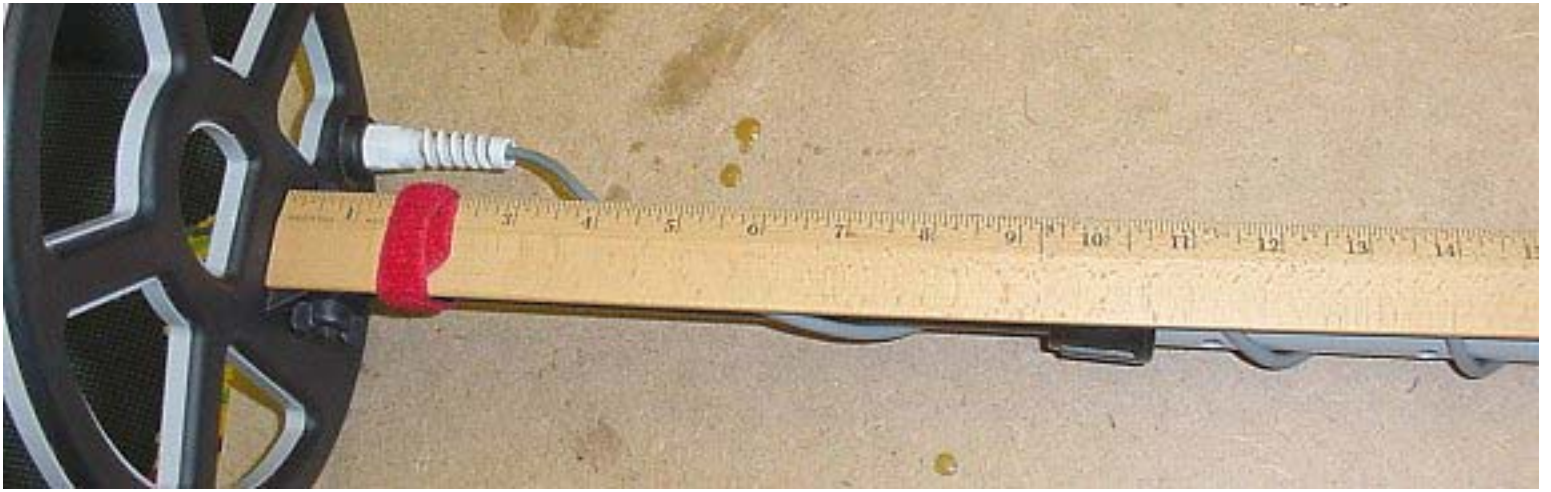
**\*\*SETTING #7-----SLIGHT THRESHOLD ----- " 6 ----- " "**

PINPOINT BUTTON HELD DOWN IN ALL METAL POSITION. THIS IS HELPFUL IF ADDING AN EXTERNAL GROUND BALANCE CONTROL AND ALL METAL/DISC SWITCH.



## HOW MEASUREMENTS WERE TAKEN

Multiple passes of each coin until repeatable sound was heard



## DETECTOR SETTINGS











**SETTING #4**



**SETTING #5**

