

# XD Series X-ray Inspection Systems

## Comparison Datasheet

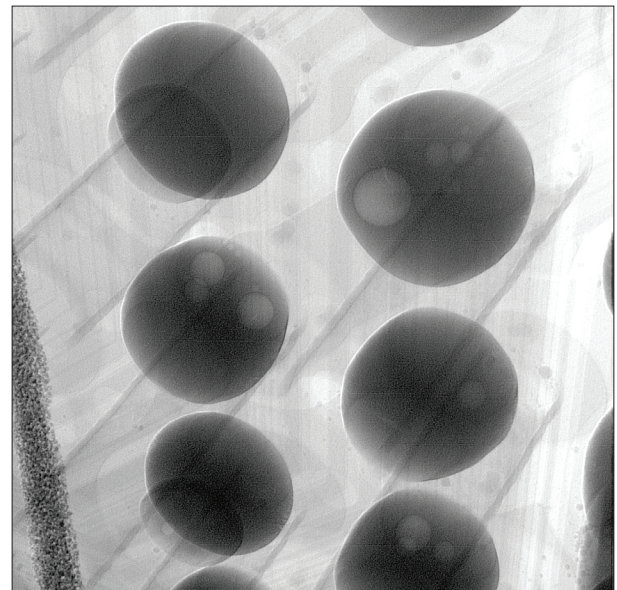
## X-ray Inspection for Electronics

### Advantages

- **Excellent On-Screen Image Quality**
- **Down to  $< 0.1\mu\text{m}$  (100nm) Feature Recognition**
- **Able to See the Smallest Features at High Power**
- **Nordson DAGE Digital Image Intensifier or Long Lifetime Digital Flat Panel Detector**
- **1.33, 2 or 3 Mpixel Image Size**
- **16-bit (65,000+) Grayscale Operation**
- **29" x 22.8" (736 x 580 mm) Maximum Board Size**
- **Highest Oblique Views without Loss of Magnification**
- **Systems that are Simple, Joystick-Free and Easy to Use and Program**
- **Nordson DAGE Image Wizard Software with Robust Automated Inspection Routines**
- **Automated Component Fault Analysis**

The riches of x-ray inspection can be yours with Nordson DAGE's complete range of x-ray inspection systems. Whether it's for a variety of production tasks or as part of your failure analysis capabilities, Nordson DAGE's focus, and that of all of our x-ray systems, is concentrated on the needs of the electronics market. As a result, our range of x-ray inspection system jewels has the broadest selection of imaging components to satisfy your demanding requirements.

Choose the correct sub-micron x-ray tube type, power and resolution together with the appropriate detector to provide the best imaging capabilities, without



Head on Pillow (HoP) joints under BGA

compromise, for PCBA and semiconductor applications. Work smarter, and faster, using Nordson DAGE's universally acclaimed, joystick-free system operation where collision-free, high magnification inspection is always ensured for current and future x-ray inspection tasks.

Apply automated fault analysis on components and whole boards, in a few clicks, through the easy to use 'point and click' Nordson DAGE Image Wizard Software.

**Crystal Clear X-ray Inspection. Nordson DAGE.**

# XD Series X-ray Inspection Systems

## Comparison

Feature		XD7500 VR Jade FP	XD7600 NT Ruby	XD7600 NT Ruby FP	XD7600 NT Diamond	XD7600 NT Diamond FP
Tube	Open Tube	•				
	Sealed-Transmissive Tube		•	•	•	•
	VR950 Tube (< 0.95 µm)	•				
	NT500 Tube (< 0.50 µm)		•	•		
	NT100 Tube (< 0.10 µm)				•	•
	3 W Target Power (< 1µm)	•				
	10 W Target Power (< 1µm)		•	•	•	•
	Automated Tube Stabilisation	•	•	•	•	•
Digital Detector	1.33 MP Flat Panel Detector	•				
	2 MP Image Intensifier		•		•	
	2 MP Flat Panel Detector			•		
	3 MP Flat Panel Detector					•
	Long Lifetime Detector	•	•	•	•	•
	16-bit Imaging	•	•	•	•	•
	10 fps Image Capture	•				
	25 fps Image Capture		•	•	•	•
System	23" Monitor	•				
	24" Monitor		•	•	•	•
	Second 24" Monitor				•	•
	Isocentric Sample Manipulation	•	•	•	•	•
	Passive Anti-Vibration	•				
	Active Anti-Vibration (AXiS)		•	•	•	•
	Oblique Angle View	65°	70°	70°	70°	70°
	Real Time Image Enhancement	•	•	•	•	•
	Total Magnification	4,200 <sup>1</sup>	23,400	15,600	60,000	35,500
	µCT & X-Plane® Ready		•	•	•	•
	Carbon Fibre Sample Tray				•	•
	Easy Automated Inspection	•	•	•	•	•
Warranty	1 Year System	•	•	•		
	2 Years System				•	•
	1 Year Tube	•				
	2 Years Tube		•	•		
	3 Years Tube				•	•
Options	Joysticks (X,Y & Z)	•	•	•	•	•
	Additional Monitor		•	•		
	µCT (3D Inspection)	•	•	•	•	•
	X-Plane® <sup>2</sup>		•	•	•	•
	Carbon Fibre Sample Tray	•	•	•		
	2 <sup>nd</sup> Year System Warranty	•	•	•		

Maximum board size: 29" x 22.8" (736 x 580 mm)

XD7800NT Ruby XL system available separately for board sizes up to 47.4" x 26.5" (1205 x 672 mm)

For more information, please contact your Nordson DAGE regional office or speak with your local Nordson DAGE representative, all of whom are listed on [www.nordsondage.com](http://www.nordsondage.com)

### Americas

+1 510 683 3930 **Phone**  
sales@nordsondage.com **Email**

### China

+86 512 6665 2008 **Phone**  
sales.ch@nordsondage.com **Email**

### Germany

+49 7021 950690 **Phone**  
sales.de@nordsondage.com **Email**

### Japan

+81 432 995851 **Phone**  
sales.jp@nordsondage.com **Email**

### South East Asia

+65 679 69500 **Phone**  
sales.sg@nordsondage.com **Email**

### United Kingdom

+44 1296 317800 **Phone**  
globalsales@nordsondage.com **Email**



**Crystal Clear X-ray Inspection. Nordson DAGE.**

**Nordson DAGE**  
25 Faraday Road  
Rabans Lane Industrial Area  
Aylesbury, Buckinghamshire HP19 8RY, UK

+44 (0)1296 317800  
[www.nordsondage.com](http://www.nordsondage.com)

Copyright © Nordson DAGE 2013  
DS-XR-comparison-080413

<sup>1</sup> No digital zoom <sup>2</sup> Patent Applied for  
Specifications subject to change without notice e & oe

**Nordson**  
DAGE