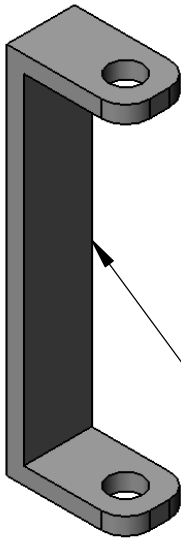
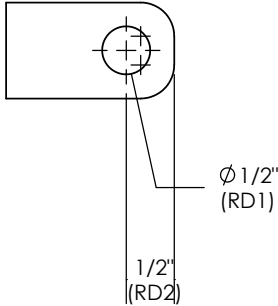
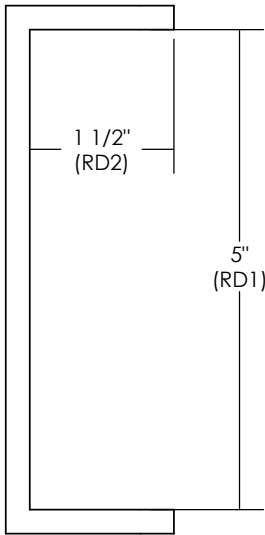
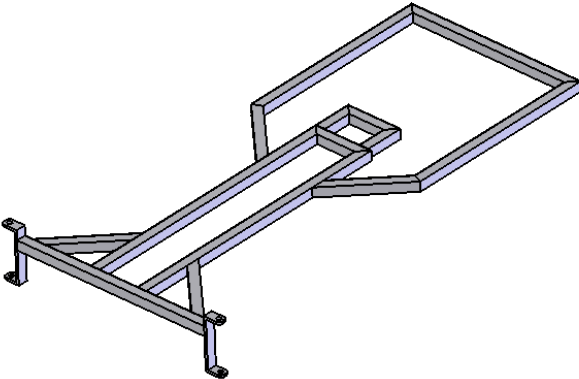


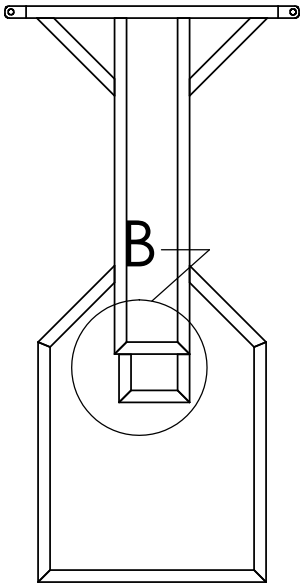
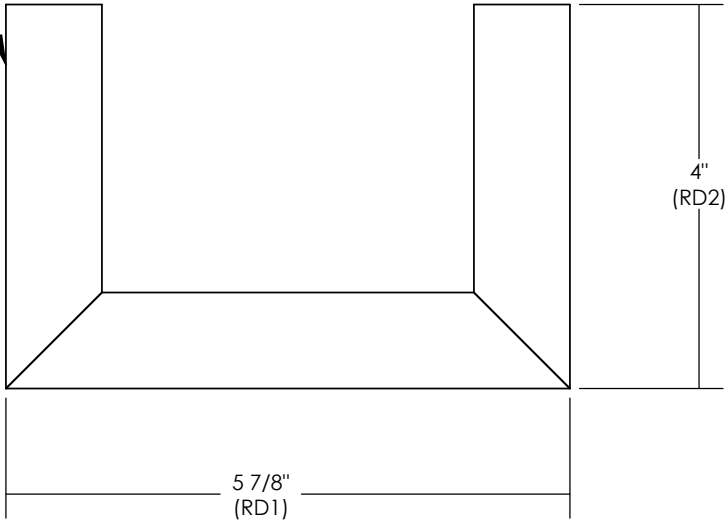
Here are a few extra things I added and used. Depending on the parts you use these may not be needed.



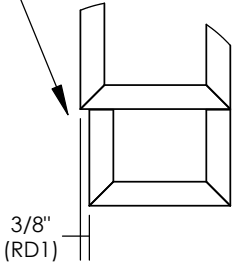
This is the size of the spindle bracket I used, I made it. I put it in here to give you an idea of what I did to make this frame level.



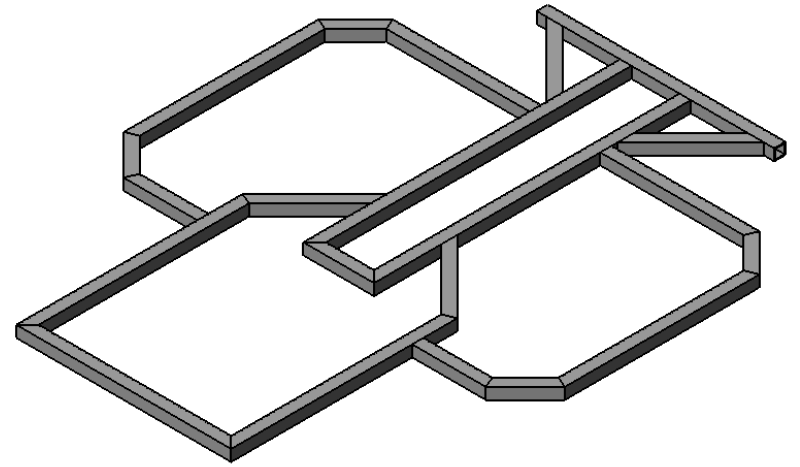
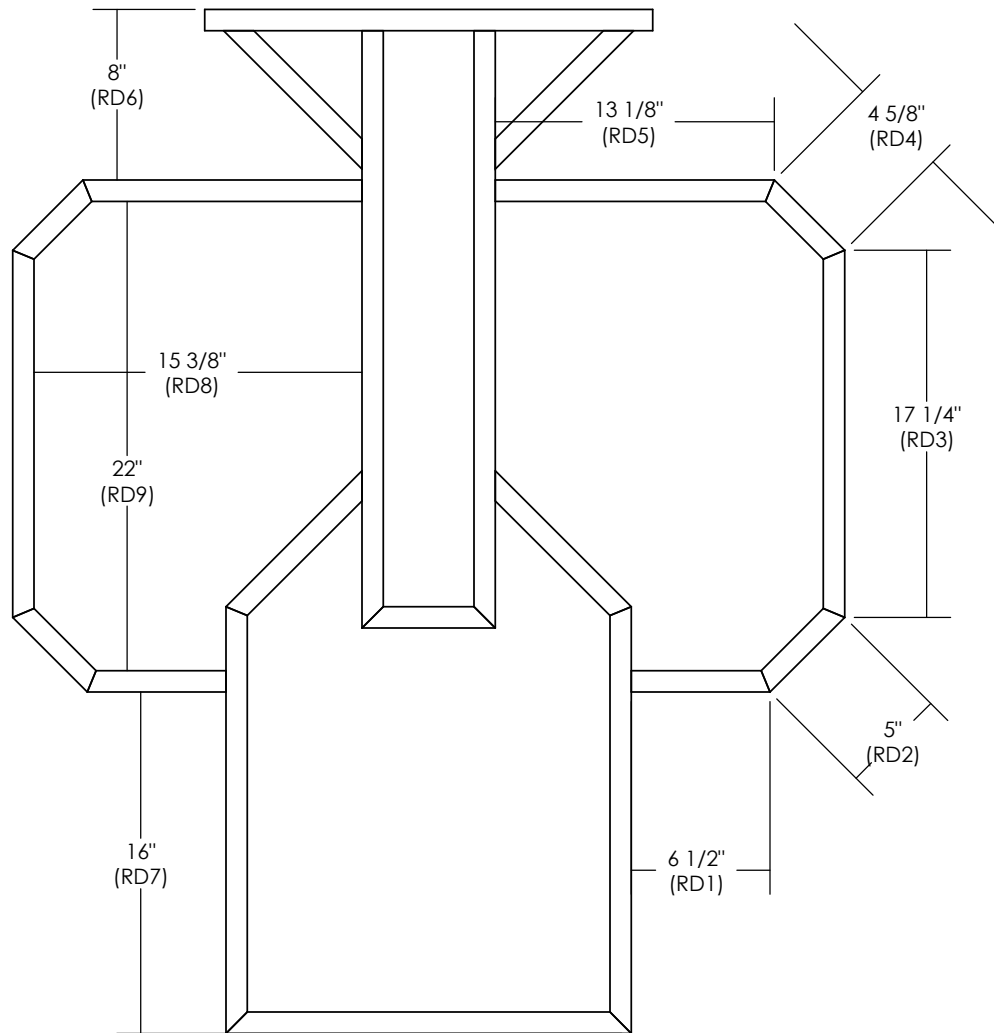
This is an extra section I had to add so the jackshaft set up would fit.



This off set is so the driven of the TC wont hit the frame.



DETAIL B
SCALE 1 : 8



www.tmanskarts.com

5



4

3

2

1