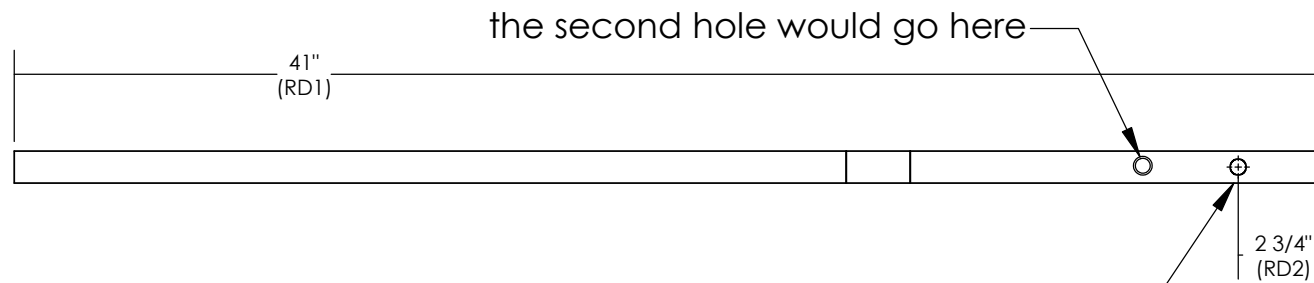
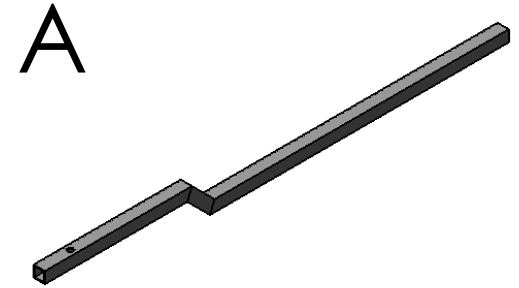
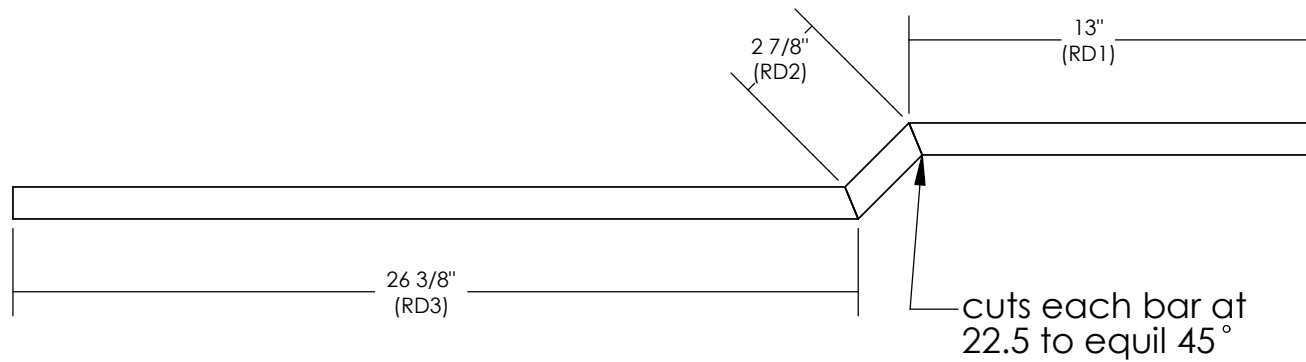


step 1

use 1x1x.095 ( 13 gauge)  
build two of these.



First hole for pillow block bearing



bottom rails

5

↑

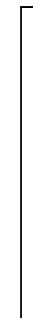
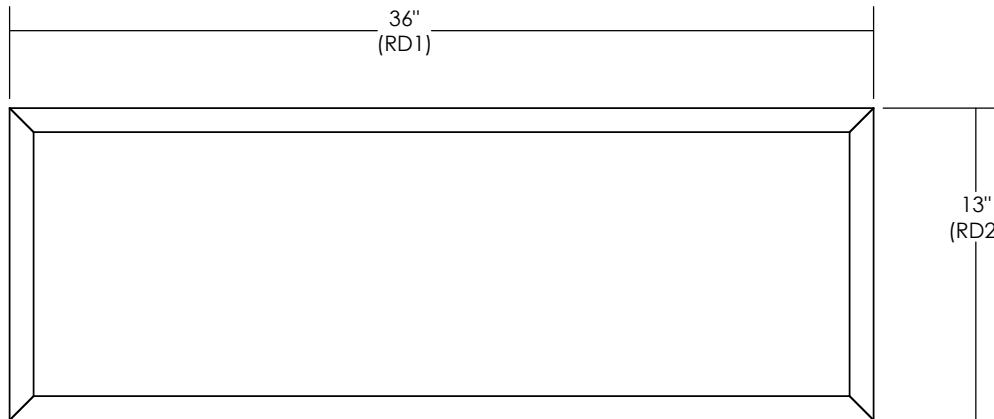
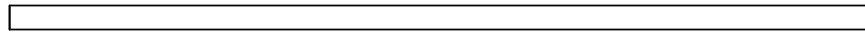
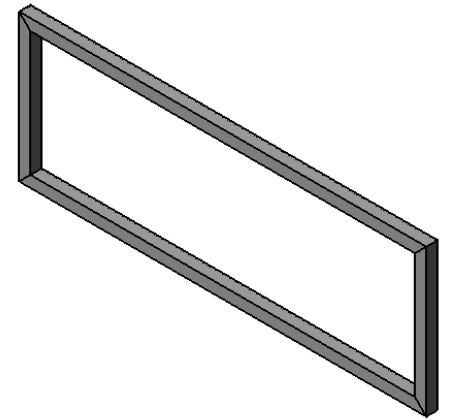
4

3

2

1

B



www.tmanskarts.com

5

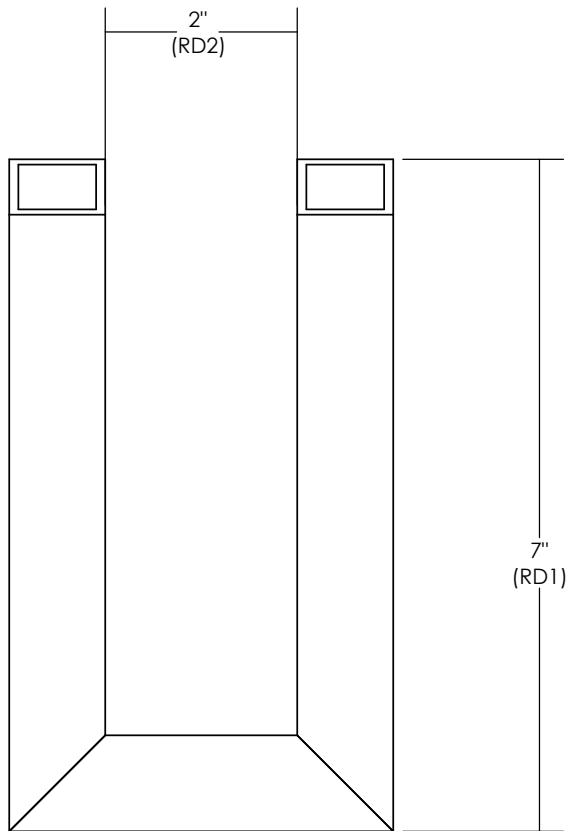


4

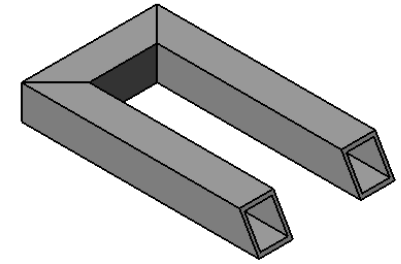
3

2

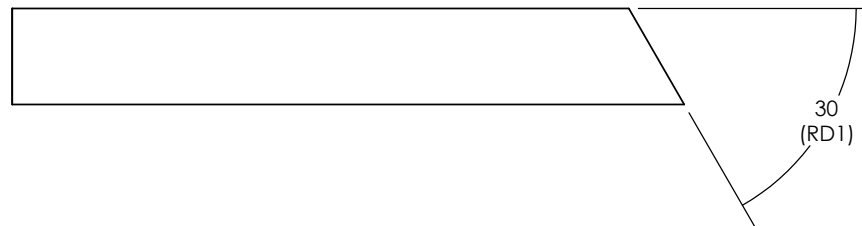
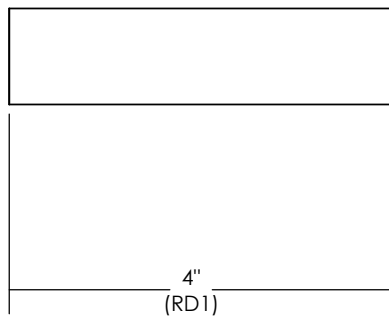
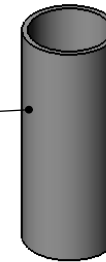
1



C



This is a piece of 2 " ID x 1/8 wall and its cut 5" long. This will act as the neck / pivit for the steering.

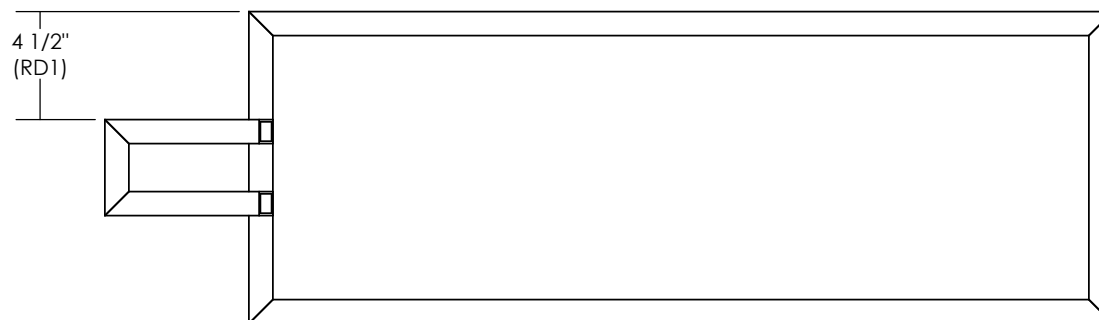
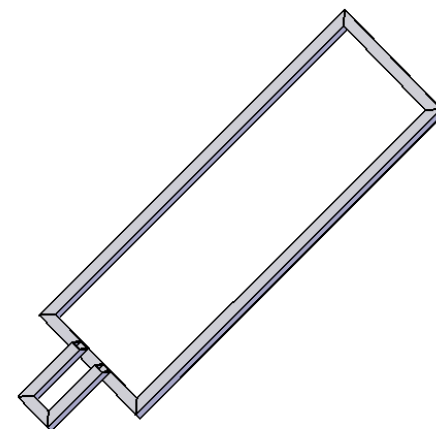


Be sure to watch the videos that I did on this so you know of the changes I made to it and the parts I used.

Pivit support

[www.tmanskarts.com](http://www.tmanskarts.com)

TOP frame and pivot support



[www.tmanskarts.com](http://www.tmanskarts.com)

5



4

3

2

1

These dimensions are based on a tire that is  
22 x 11 x 8

# Front Fork D

