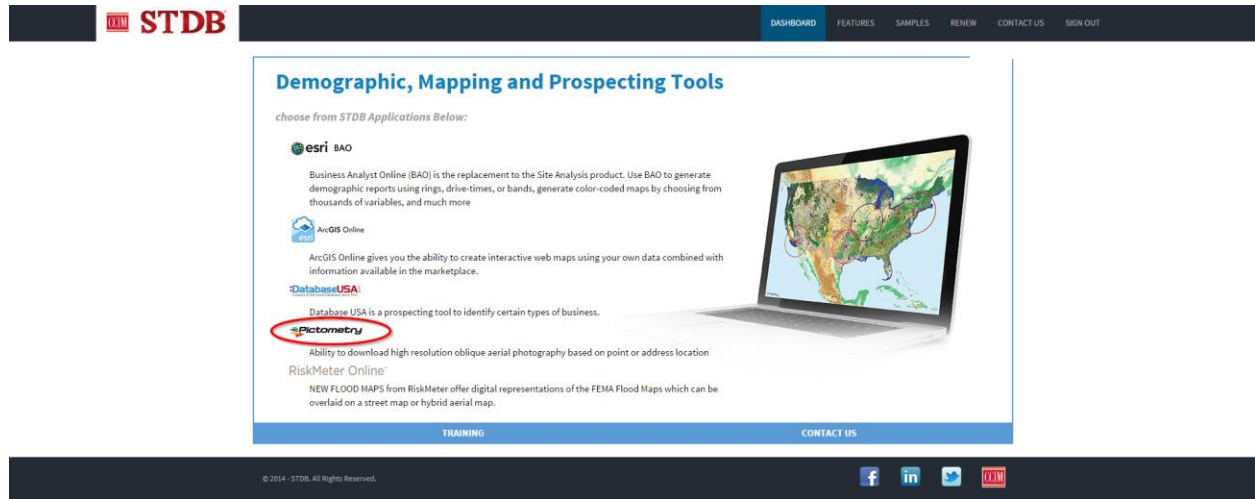


Pictometry Oblique Tutorial

Step 1 of 4 – Select Pictometry from the STDB Dashboard



NOTE: Before proceeding with the Pictometry tool, please note that it is imperative that users turn off their internet browsers “Pop-Up Blocker” to ensure that the image will appear in a new window.

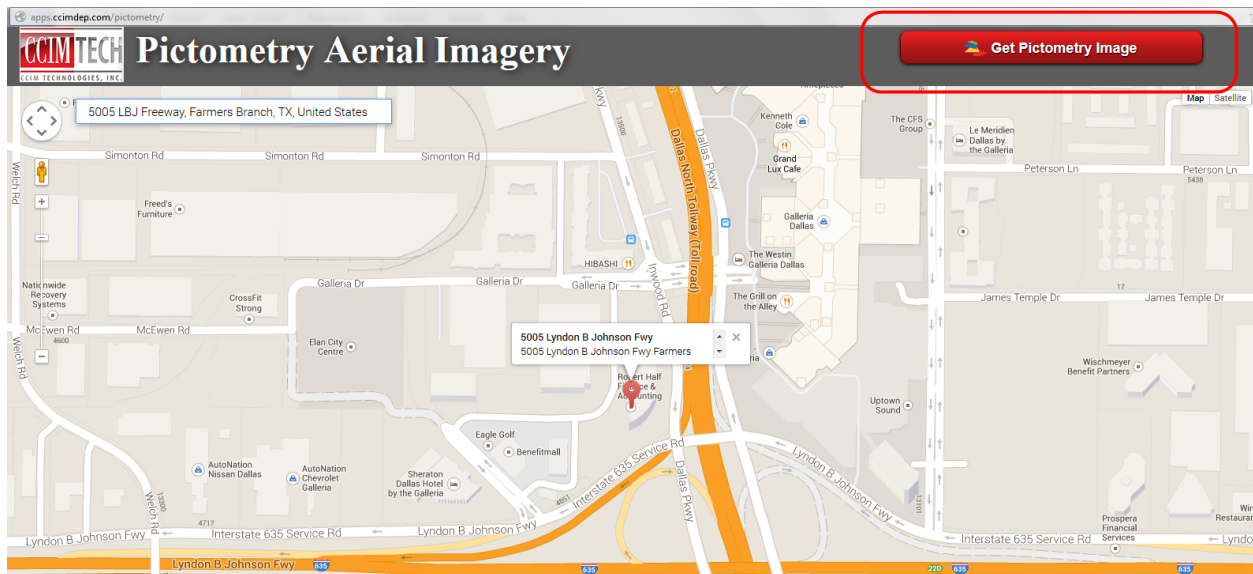
Step 2 of 4 – Enter a Location and Get Pictometry Image

In this step the user must enter an address in the ‘Search’ field in the upper left corner of the map. Users will notice the address auto-filling below the ‘Search’ field. Next, click the correct address from the auto-filled list of addresses below the ‘Search’ field to proceed.



NOTE: Users must use the mouse to click the address from the list of addresses in the automatically filled list of addresses in order to proceed. Clicking the “Enter” button on the keyboard will not allow the map to zoom in.

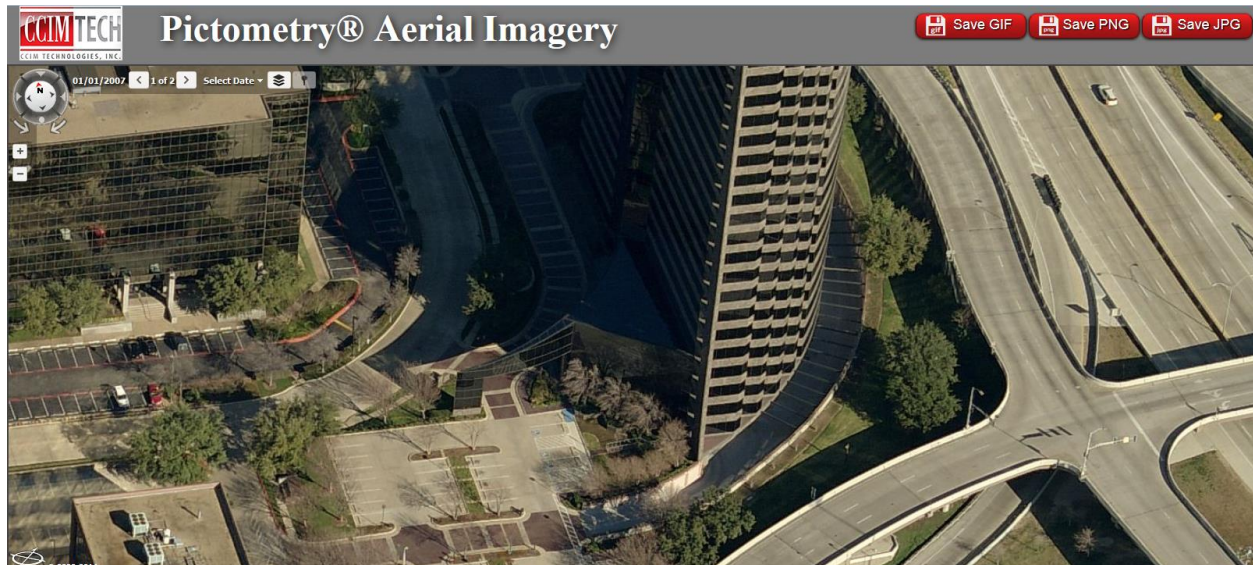
After clicking the correct address in the 'Search' field, the map will automatically zoom to the address. Click the *"Get Pictometry Image"* button in the upper right corner of the map to proceed.



NOTE: The *"Get Pictometry Image"* button will only appear after an address has been entered and the map has zoomed in to this address.

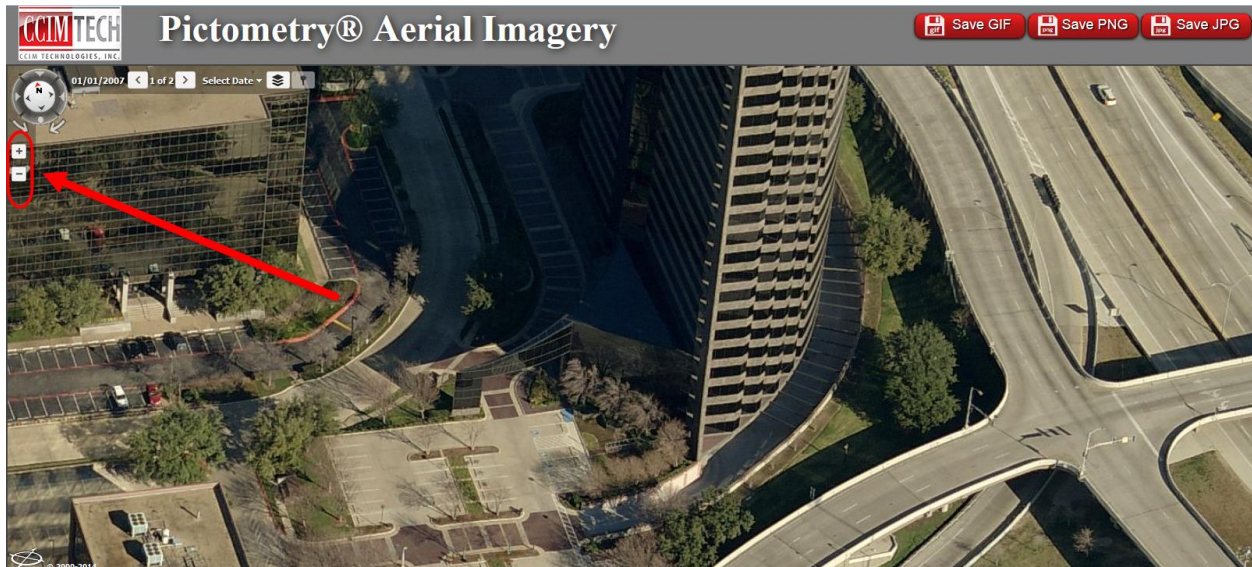
Step 3 of 4 - Adjusting the Pictometry Image

The Pictometry image will automatically appear in a new internet browser window or tab.

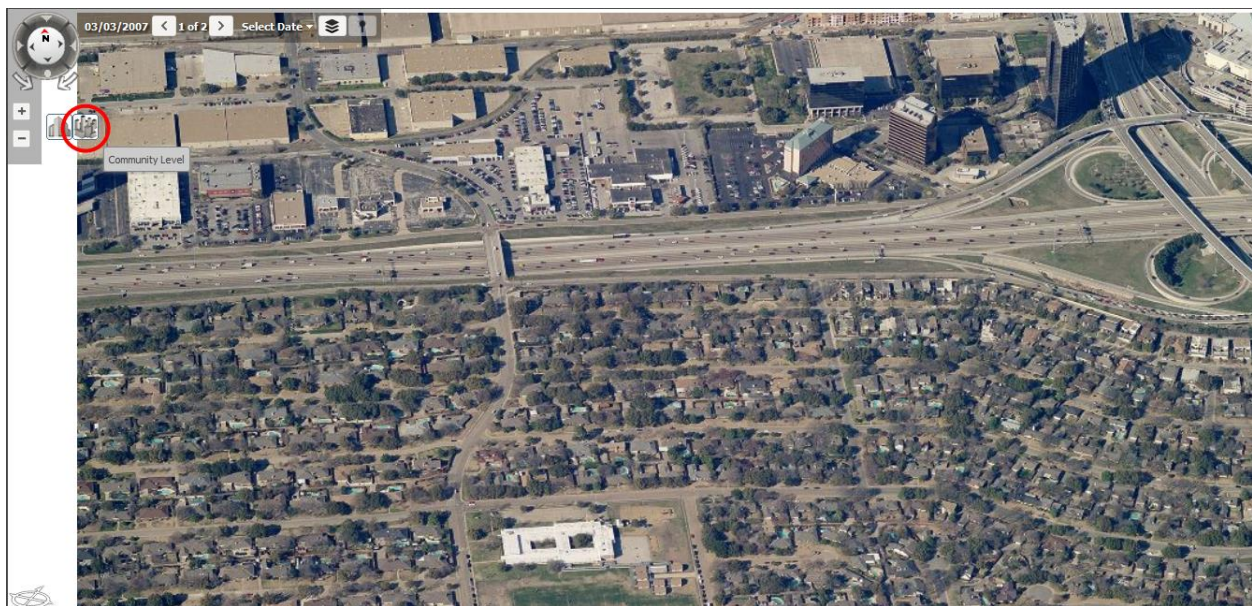


Using the Zoom Tool

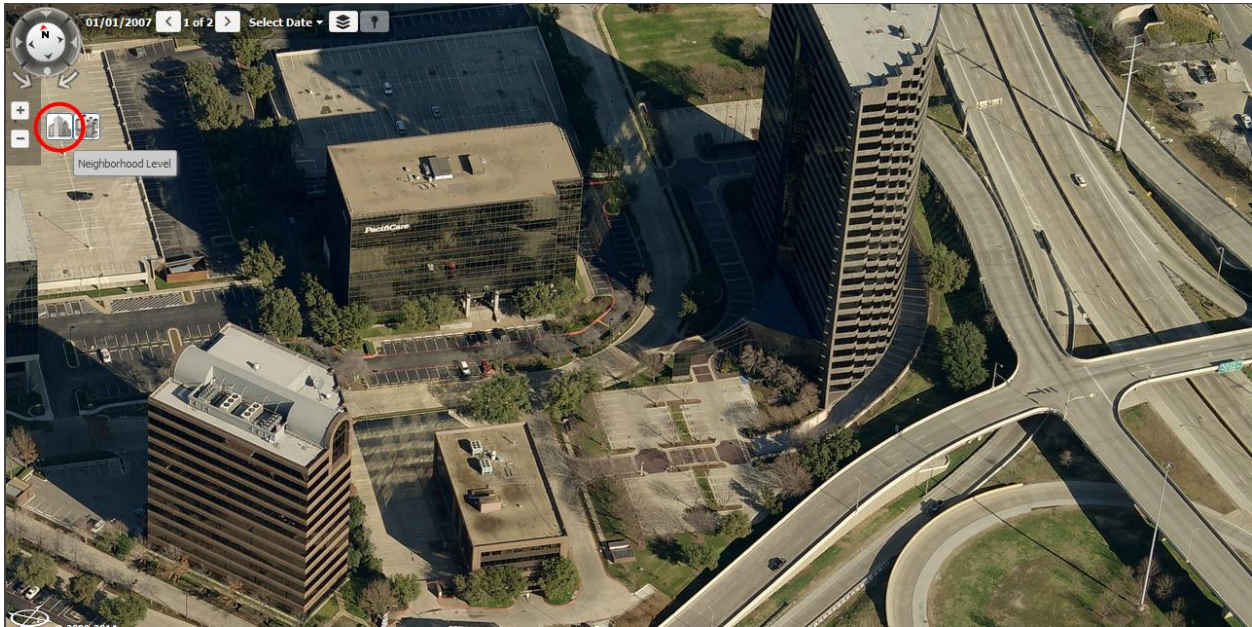
Users may zoom in or out by using the “+” and “-” buttons in the upper left corner of the map.



When holding the mouse cursor over the “+” or “-” buttons, users may zoom to the ‘Community Level’ by clicking the “Community Level” icon on the right. The image will appear similar to the zoom level below.



When holding the mouse cursor over the “+” or “-” buttons, users may zoom to the ‘Neighborhood Level’ by clicking the “*Neighborhood Level*” icon on the left. The image will appear similar to the zoom level below.




Using the Map Perspective Tools to Change Directions

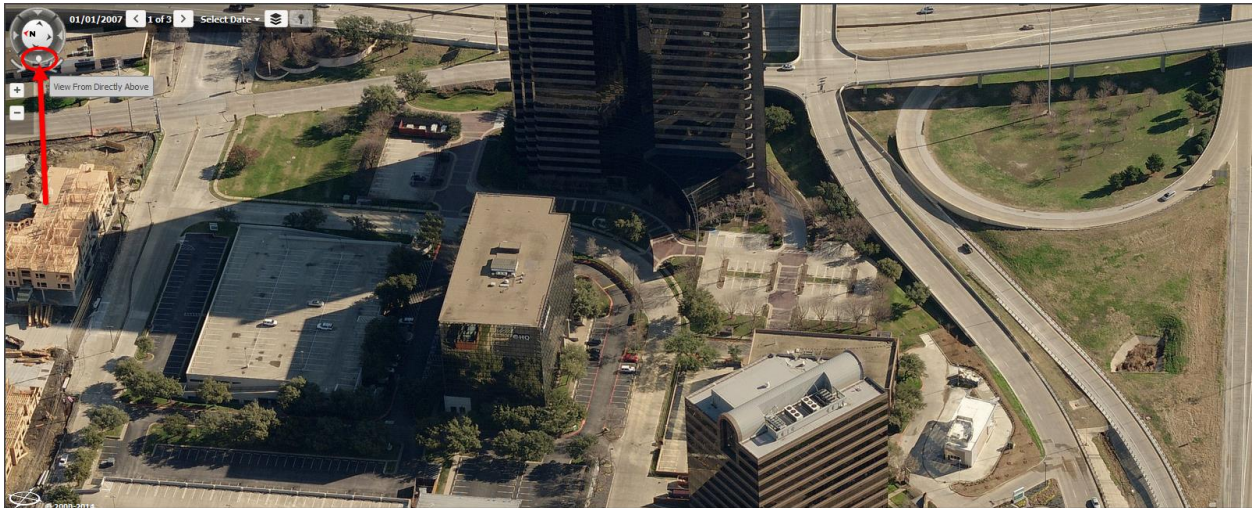
Once the zoom level has been set, users may now change the directional view using the compass icons or arrow icons in the upper left corner of the map.



Users may also rotate the map by clicking one of the directional arrows directly below the compass icon to rotate the image clockwise or counterclockwise.

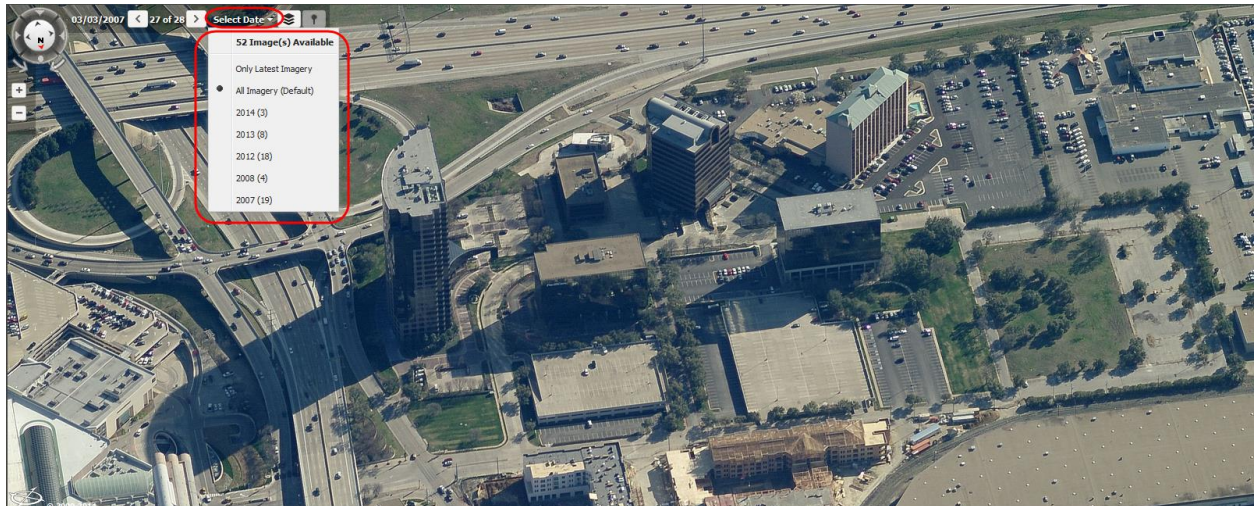


To view the Pictometry image from directly above, click the “” icon directly below the compass icon in the upper left corner.



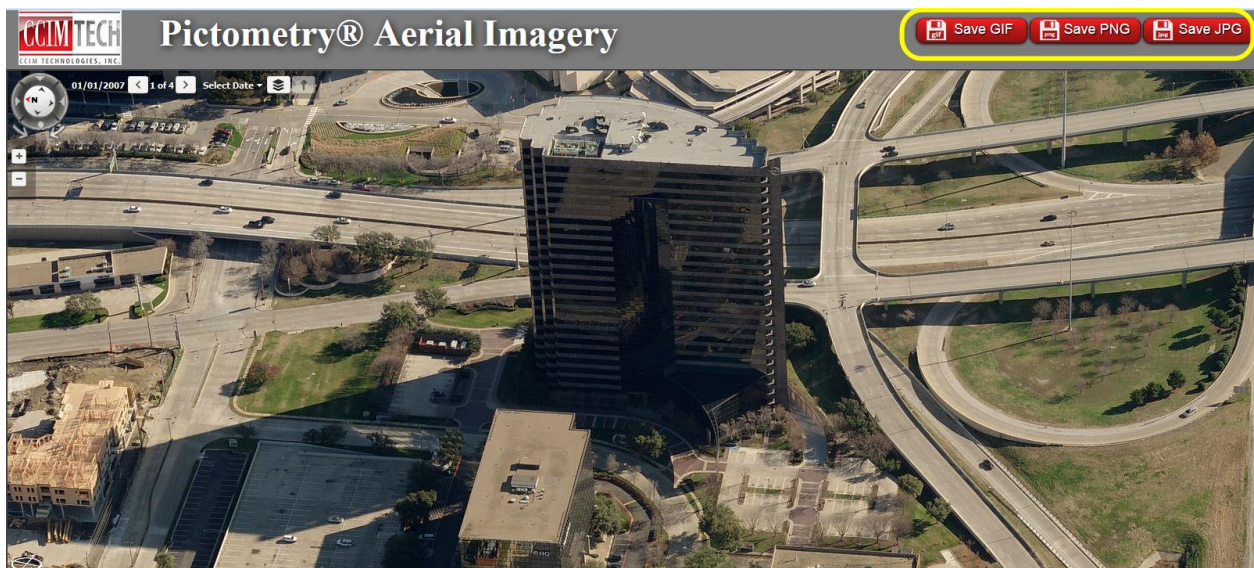
[illegible]

Users may change the vintage of the image by clicking the *“Select Year”* button and selecting another year.



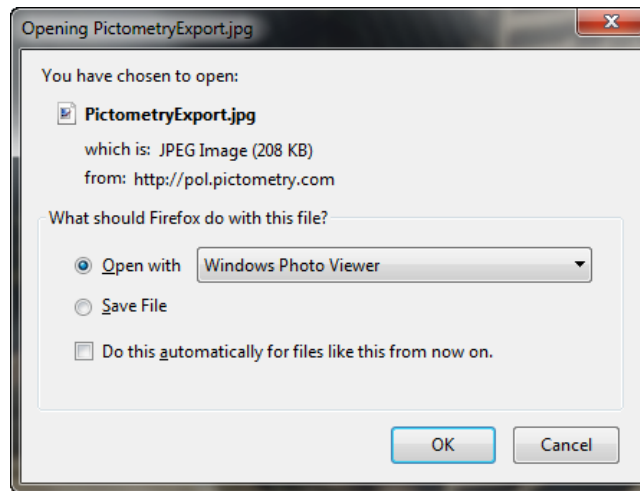
Step 4 of 4 – Saving the Pictometry Image

Once the Pictometry image is satisfactory, users may save the image by selecting the preferred image file format in the upper right corner of the map.



NOTE: It is imperative that users turn off their internet browsers *“Pop-Up Blocker”* to ensure that the image will appear in a new window.

After the download is complete, the computer will prompt users to open or save the file. CCIMTECH strongly recommends that users select “*Open With*” to browse the computer for your preferred picture managing software.



If you have any questions pertaining to creating a business list, please contact support by submitting a ticket at www.ccimtechsupport.com. Enjoy the technology!