

# StoryMap Training: Map Tour

## Exercise: Story Map Journal

CCIM Chapter Training Webinars | August/September 2016

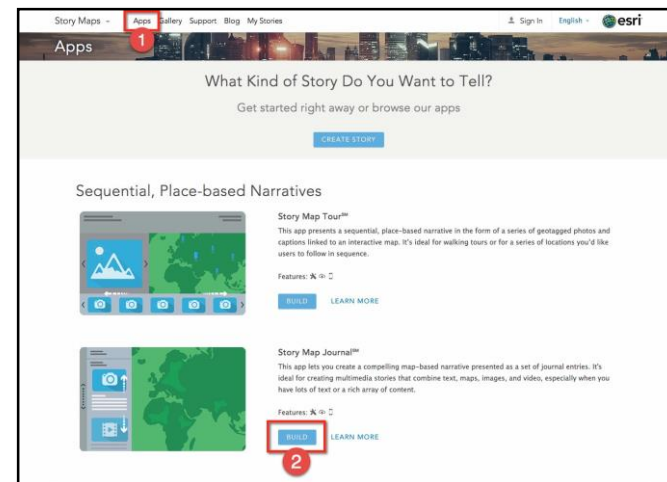
*In this tutorial you will begin to create a simple story map using the Map Journal app.  
Building the first few sections should take you about 10-15 minutes.*

### Launch the Map Journal Builder

Go to <http://storymaps.arcgis.com>

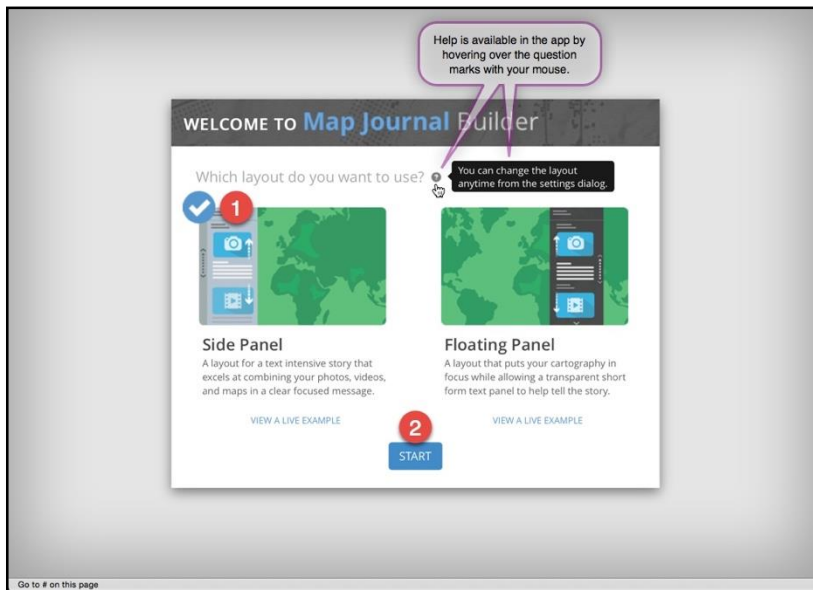
1. At the top of the page, click **Apps**.
2. Find *Story Map Journal* in the list of apps and click **Build**.
3. **Sign in** to your ArcGIS account, if prompted.

**Note:** As a CCIM user chose the **Enterprise Login** option not ArcGIS Online.



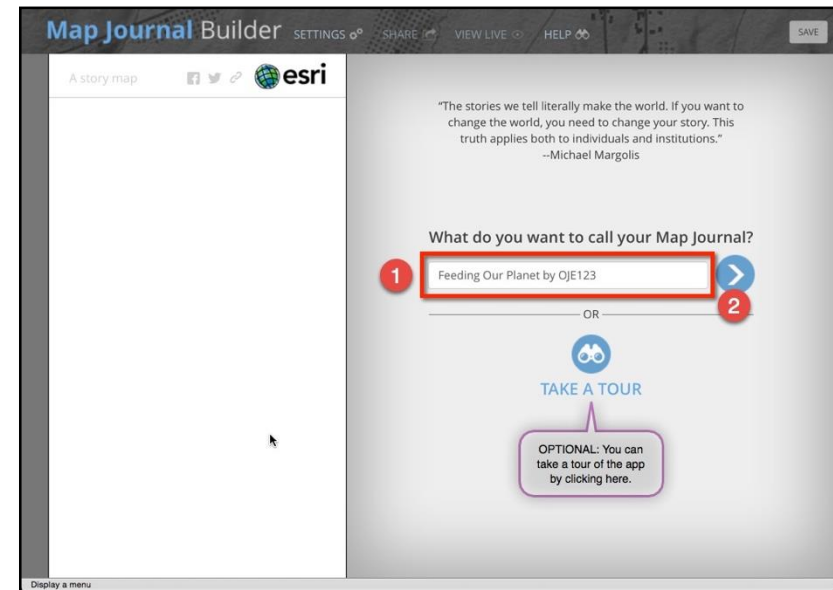
# StoryMap Training: Map Tour

## Build your Journal – Choose Layout and Title



*Choose a layout for the Map Journal:*

1. Confirm the **Side Panel** layout is checked.
2. Click **Start**.



*Provide a title for your journal:*

1. Enter a title for your journal:  
*Feeding Our Planet by [your initials]*  
*e.g., “Feeding Our Planet by ABC”*
2. Click the forward arrow.

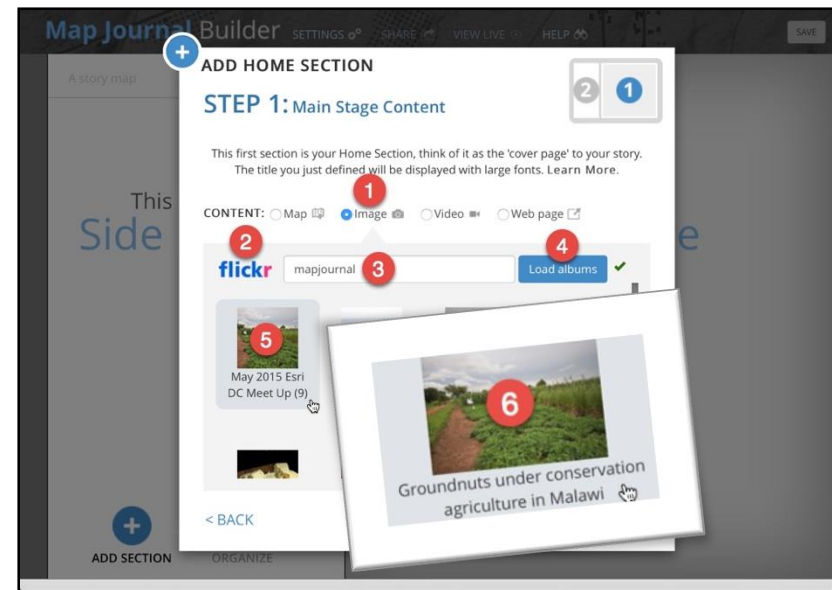
# StoryMap Training: Map Tour

## Build your Home Section – Main Stage

Configure Home Section's main stage content:

1. Next to **Content**, click **Image**
2. Click **Flickr**
3. Type in username **"mapjournal"**
4. Click **Load albums**
5. Click album **Workshop (10)**
6. On next panel, click photo **Groundnuts under conservation agriculture...**

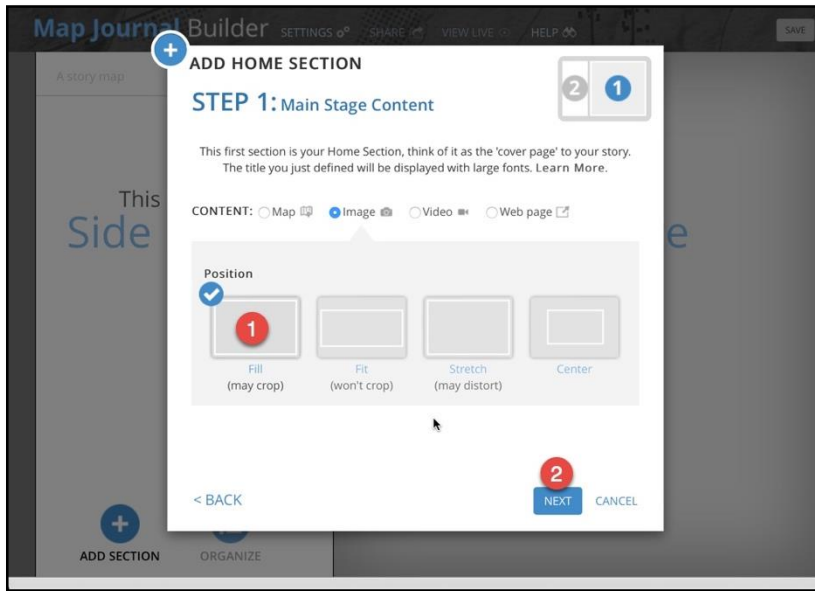
**Note:** StoryMap photos can be stored in any public storage site including Flickr, Photobucket, BropBox, etc. *The link must contain a valid image URL ending with .jpg, .png, .gif etc.* You can use the "view image location" and "copy image location" in your browser to test this.



Wikimedia Commons is an online repository of free-use high quality images and other media files. Many are free to modify for commercial use with appropriate attribution.

[https://commons.wikimedia.org/wiki/Main\\_Page](https://commons.wikimedia.org/wiki/Main_Page)

# StoryMap Training: Map Tour



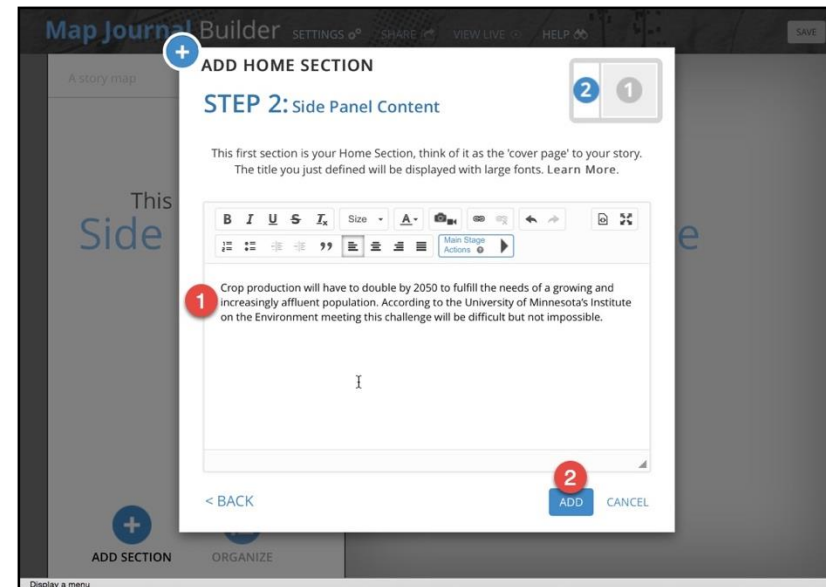
## Build your Home Section – Side Panel

*Configure photo position:*

1. Confirm **Fill** is checked.
2. Click **Next**.

*Provide side panel text:*

1. Enter the side panel description into the text block. You can copy the “*Side Panel Description*” text (right, above).
2. Click **Add**.



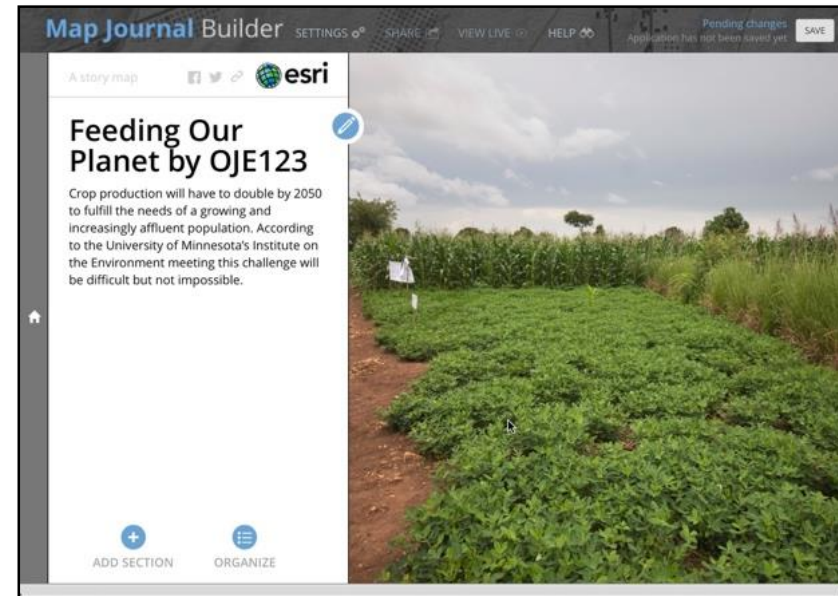
# StoryMap Training: Map Tour

## **Side Panel Description:**

Crop production will have to double by 2050 to fulfill the needs of a growing and increasingly affluent population. According to the University of Minnesota's Institute on the Environment meeting this challenge will be difficult but not impossible.

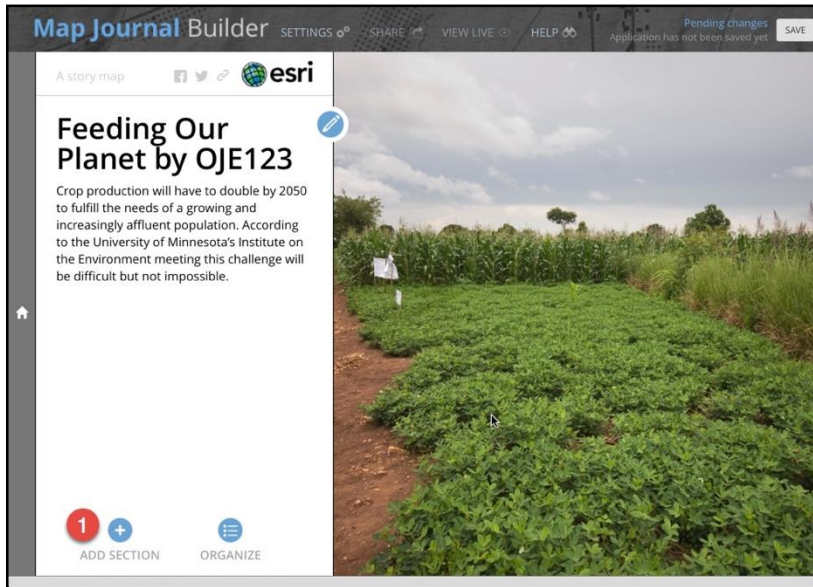
*You've finished the home section of your map journal! The home section should provide an introduction to your story map.*

*Now on to building Section 1...*



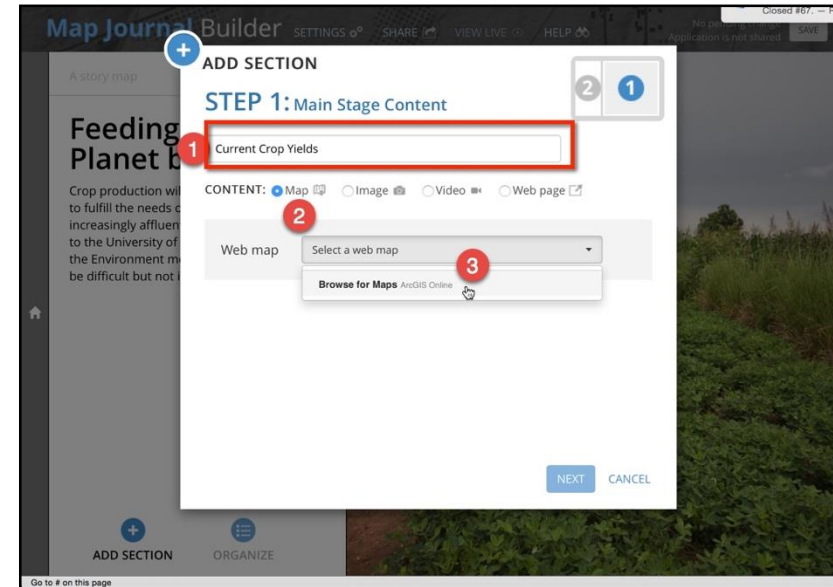
# StoryMap Training: Map Tour

## Build Section 1 – Main Stage



*Add a new section to your map journal:*

1. Click **Add Section**.



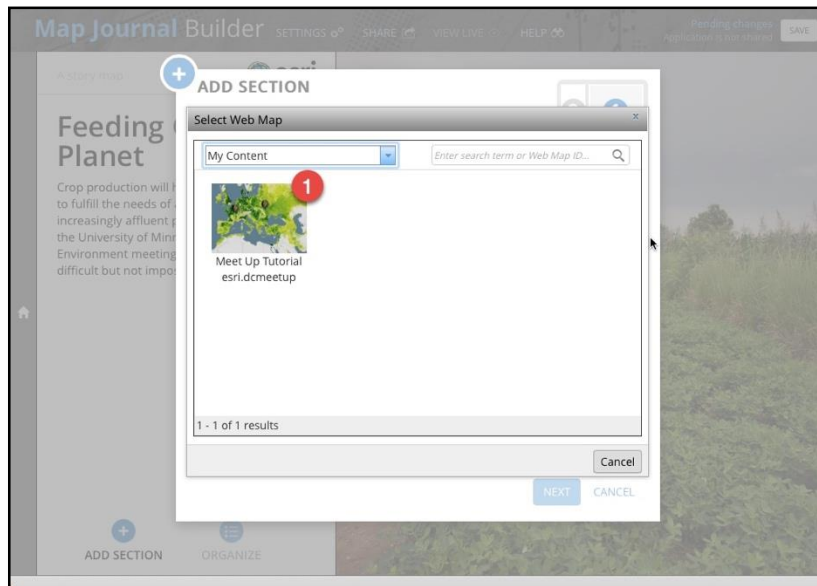
*Add a section title and choose content type:*

1. Enter the title: **Current Crop Yields**
2. Next to Content, click **Map**
3. Click **Select a web map** then **Select a map**



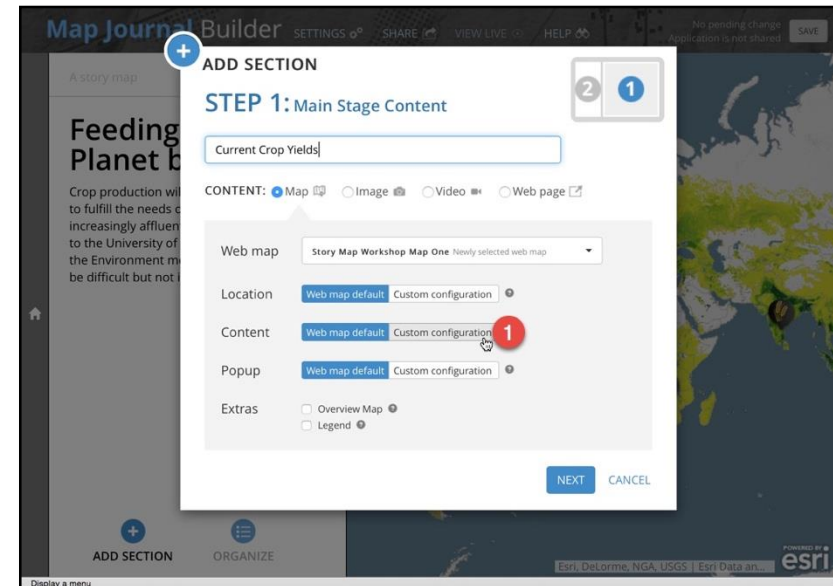
# StoryMap Training: Map Tour

## Build Section 1 – Main Stage



*Select a web map:*

1. Select ArcGIS Online from the dropdown.
2. Search for “StoryMapWorkshop” (no spaces)
3. Click the thumbnail

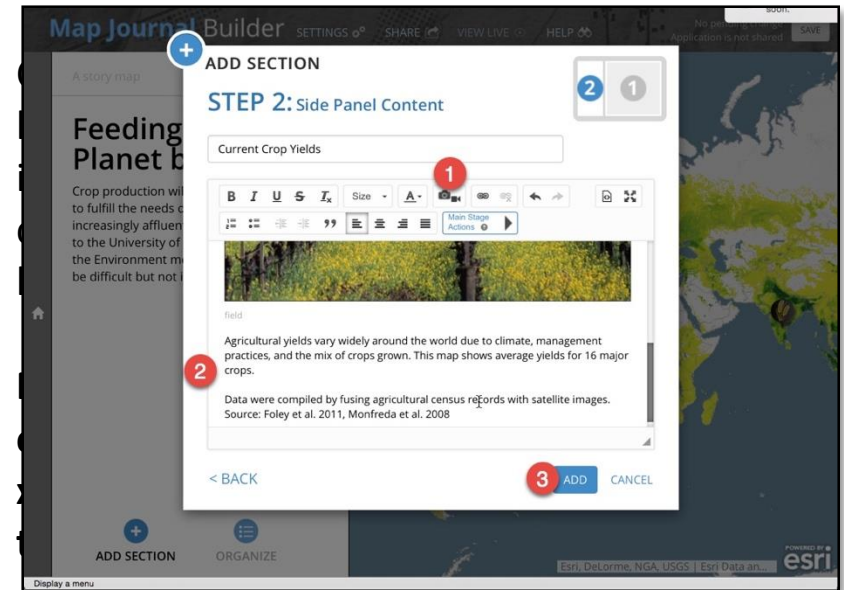
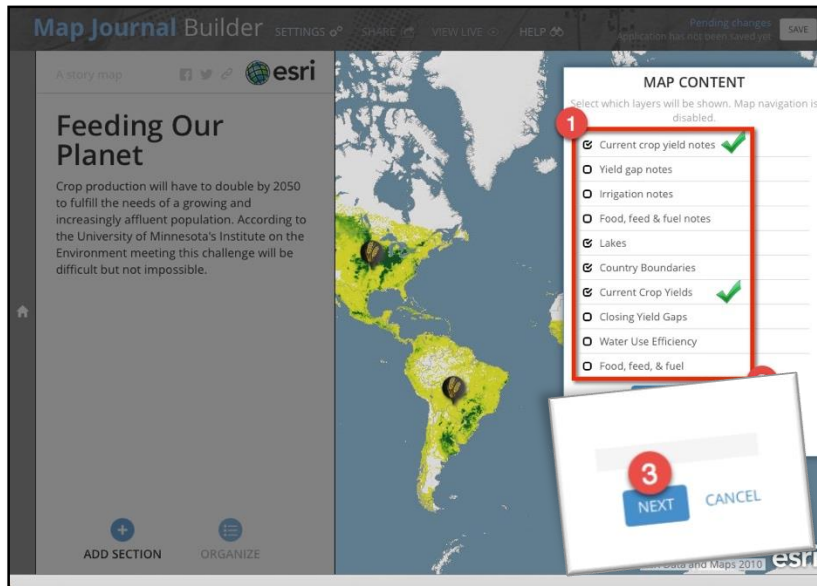


*Configure the web map for this section:*

1. Next to **Content**, click **Custom Configuration**.

# StoryMap Training: Map Tour

## Build Section 1 – Main Stage



*Configure web map's visible layers:*

1. Check the boxes next to these layers:
  - a. *Current crop yields notes*
  - b. *Current crop yields*
  - c. *Elevation Hillshade*
2. Click **Save Map Content**.

*Add the side panel image and description:*

1. Click the **Camera icon (Insert an Image, Video or Web Page)**. Add the photo named "**field**" from the Flickr album (Workshop (10)) you used before. Delete the caption text and click **Apply**.



# StoryMap Training: Map Tour

- Beneath the inserted image, cut and paste the side panel description from the text below:

Agricultural yields vary widely around the world due to climate, management practices, and the mix of crops grown. This map shows average yields for 16 major crops.

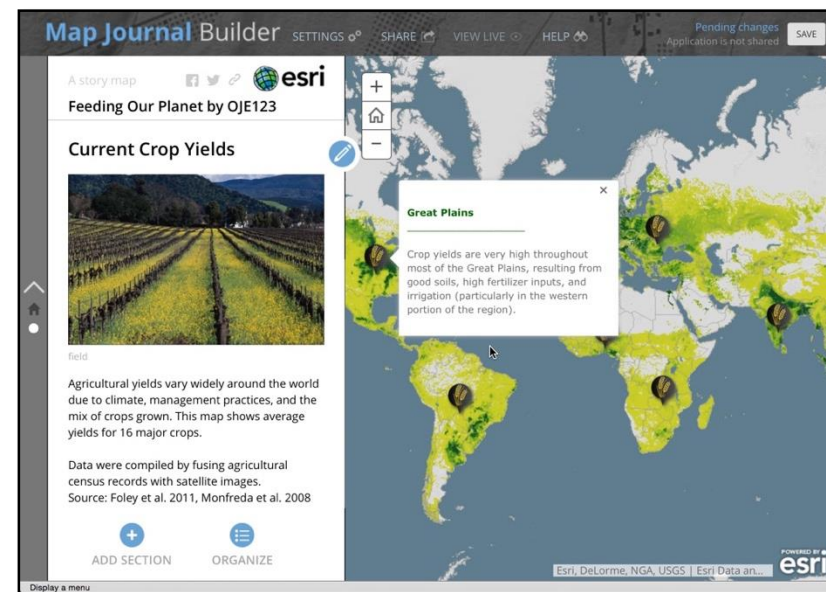
Data were compiled by fusing agricultural census records with satellite images.

- Click **Add**.

*You can click the map pins to reveal interesting information about crop yields in different areas of the world and pan/zoom to navigate*

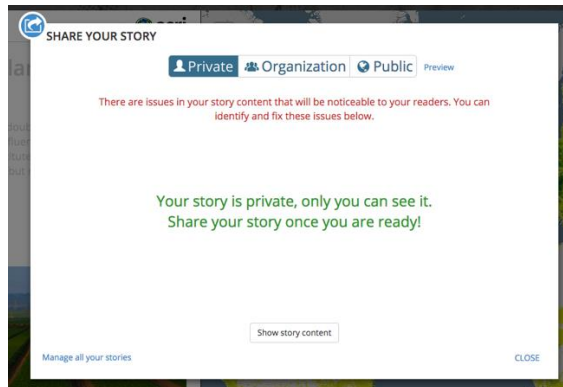
Note that there's a **"FIX"** button in the upper right corner. Click it.

This is the **"My Stories"** function, which checks to make sure all your story map content is working. In this case, the map has layers that aren't public. For now, we'll choose **"Ignore"**, but this is an important function that you should use to ensure the health and accessibility of your story.



# StoryMap Training: Map Tour

Now click **Save** at the top right. You'll see a message about how to preview and share your map journal.

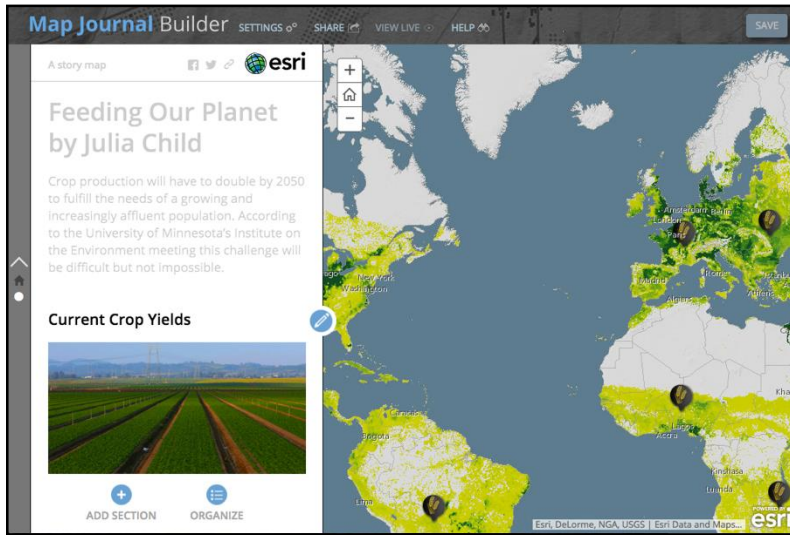


Click **Preview** to see your draft map journal.

Note that our **“My Stories”** function checks your story’s content to make sure everything is accessible. It alerts you if anything isn’t working properly, and gives you tips on how to fix it.

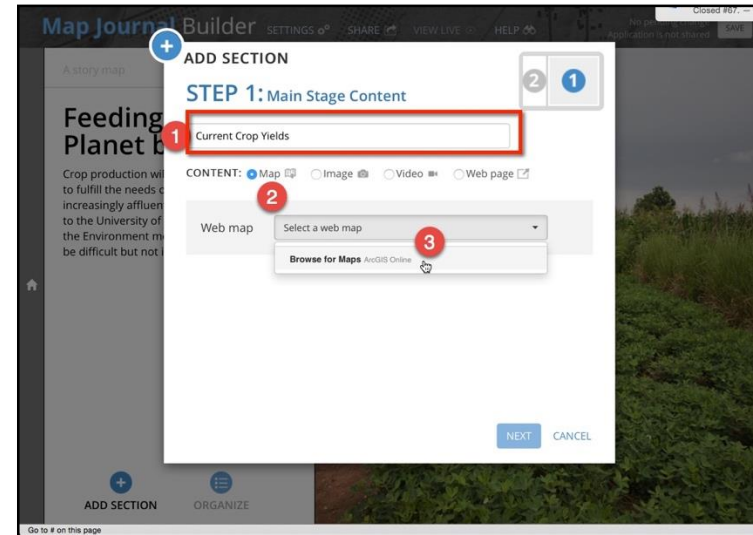
# StoryMap Training: Map Tour

## Build Section 2 – Main Stage



*Add a new section to your map journal:*

1. Click **Add Section**.

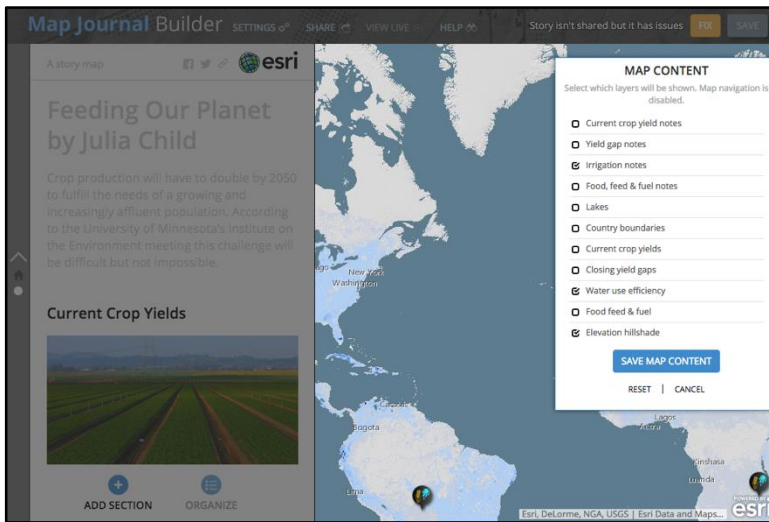


*Add a section title and choose content type:*

2. Enter the title: **Increasing water use efficiency**
3. Next to Content, click **Map**
4. Choose the current web map (Feeding the world..)

# StoryMap Training: Map Tour

## 5. Next to Content, click **Custom configuration**



## 6. Click the boxes next to these layers:

- Irrigation notes*
- Water use efficiency*
- Elevation Hillshade*

## 7. Copy in the following text:

Seventy percent of humanity's freshwater withdrawals are for irrigating crops<sup>1</sup>. Nearly a quarter of all croplands are irrigated; these lands provide a third of global crop production.

### Current Crop Yields

Agricultural yields vary widely around the world due to climate, management practices, and the mix of crops grown. This map shows average yields for 16 major crops.

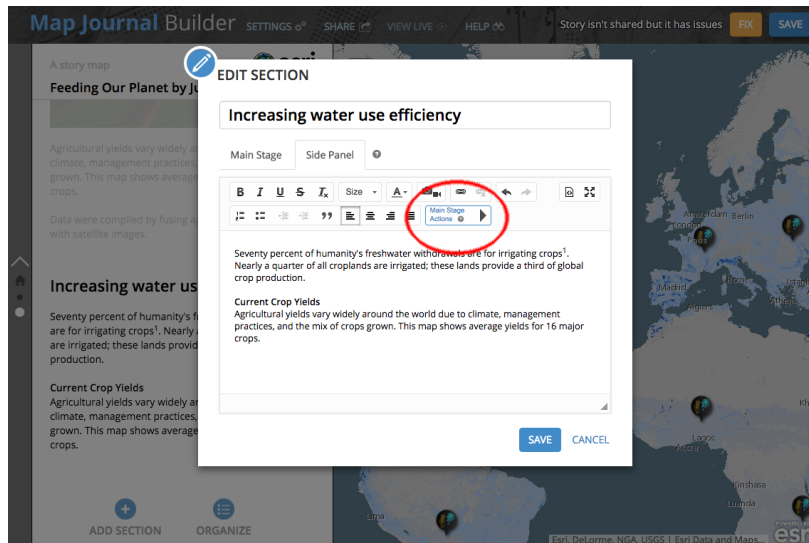
Great! You've done another section!

This time, though, we're going to add a **Main stage action**, which enables you to make things happen within a section.

# StoryMap Training: Map Tour

## Adding a Main Stage Action

1. Click the **blue pencil icon** next to the section title



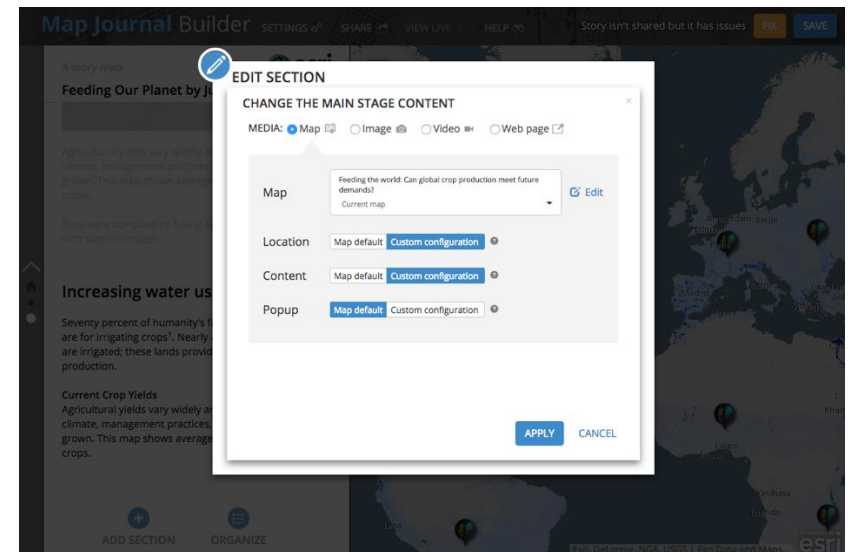
2. Highlight **Current Crop Yields** in the text

Seventy percent of humanity's freshwater withdrawals are for irrigating crops<sup>1</sup>. Nearly a quarter of all croplands are irrigated; these lands provide a third of global crop production.

**Current Crop Yields**  
Agricultural yields vary widely around the world due to climate, management practices, and the mix of crops grown. This map shows average yields for 16 major crops.

3. Click the **Main Stage Actions** button in the text editor (red circle above)

4. Click the trio of symbols to bring up the **Change the main stage content** menu



5. Click **Custom configuration** next to Content

# StoryMap Training: Map Tour

## Adding a Main Stage Action | Additional Info

6. Click the boxes next to these layers:

- a. *Yield gap notes*
- b. *Closing yield gaps*
- c. *Elevation Hillshade*

7. Click **Save Map Content**.

8. Click **Apply**.

Now, clicking the phrase “Current Crop Yields” in the text causes the map to change.

Main Stage Actions can also be used to show photos, videos, and websites.

### Need more help?

[Click on this link](#) for a step-by-step tutorial on how to build a Story Map Journal.



# StoryMap Training: Map Tour

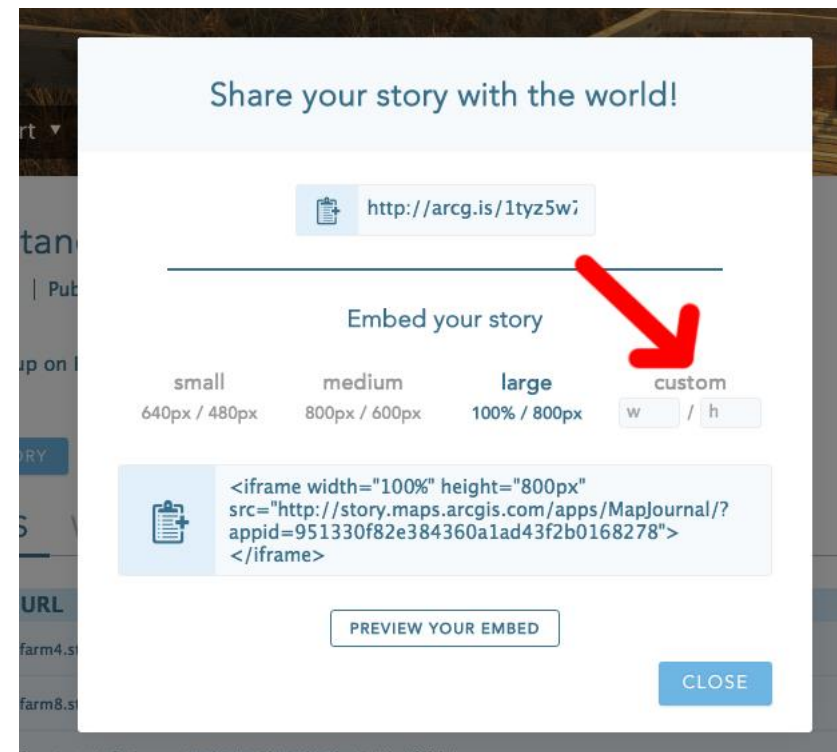
## Previewing How Your Story Map Would Look Embedded in a Website

Your story map can be easily embedded in your company's website.

First preview how your story map looks in any size embed frame by going to [My Stories](#) and clicking the paperclip "link" icon as shown below.



You can use one of the predefined options or enter width and height (in pixels) for the embedded StoryMap in the "Custom" option e.g. Width = 770, Height = 500



Copy the code beginning/ending in "iframe" and paste into your website.