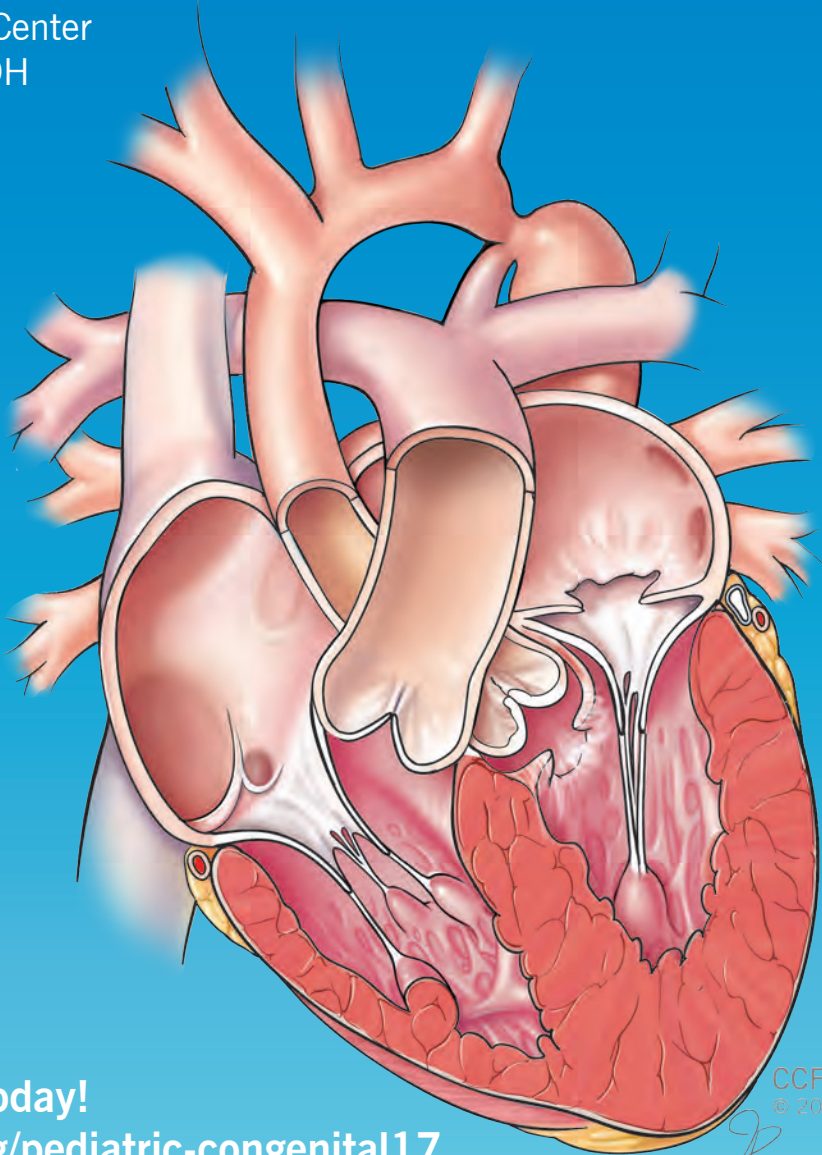


2nd Annual

# Advances in Pediatric and Congenital Heart Summit: Navigating Shone's Complex

Thursday, November 9 – Saturday, November 11, 2017  
Cleveland Clinic InterContinental Hotel and Bank of America  
Conference Center  
Cleveland, OH



Register Today!  
[ccfcme.org/pediatric-congenital17](http://ccfcme.org/pediatric-congenital17)

# 2nd Annual Advances in Pediatric and Congenital Heart Summit: Navigating Shone's Complex

## Overview

Shone's Complex is a rare congenital heart disease consisting of multiple left heart obstructive defects:

1. Mitral stenosis either as a "parachute" mitral valve or mitral stenosis or mitral ring.
2. Valvular and subvalvular aortic stenosis
3. Coarctation of the aorta

The obstructive lesions often result in the left ventricle being hypoplastic.

There is a broad spectrum of symptoms, treatments, and outcomes for Shone's Complex depending on the severity and number of defects. There are also incomplete forms of the disease in which only two or three of these defects are present, and cases in which other congenital heart defects also occur (e.g. patent ductus arteriosus, interrupted aortic arch, bicuspid aortic valve, atrial septal defect, ventricular septal defect).

It is especially important for clinicians to stay current with diagnostic, and management options. The goal of these options is to improve patient outcomes that have an impact on quality of life. The format of this summit is to provide multiple short lectures followed by vibrant panel discussions. Ample time will be allotted for participation by the audience with question and answer sessions.

## Target Audience

The Summit is designed for physicians, fellows, residents and allied health professionals in pediatric and adult cardiology, cardiothoracic surgery, critical care medicine and pediatrics.

## Objectives

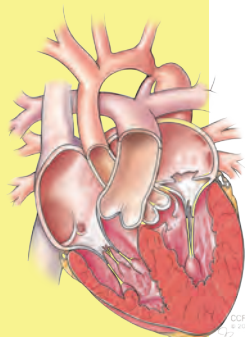
1. Compare the surgical interventions to the long term outcomes.
2. Describe how to navigate Shone's Complex repair to achieve optimal outcome.
3. Describe the possible neonatal interventions and their results.
4. Describe why Shone's Complex procedures fail; and how to avoid failure with medical and surgical interventions.
5. Identify the alternatives for treatment of borderline left ventricle including rehabilitation to heart transplant and assist devices, and the results of those interventions.

## Co-Directors:

Hani Najm, MD  
Elizabeth Saarel, MD

## Featuring:

Michal Ilbawi, MD  
James Lock, MD  
Stephen Sanders, MD  
Bill Williams, MD  
Roberta Williams, MD



## Call for Abstracts

**Submission Deadline:** August 1, 2017

Abstracts are now being reviewed for the 2nd Annual Advances in Pediatric and Congenital Heart Summit: Navigating Shone's Complex

Go to [www.ccfme.org/pediatric-congenital17](http://www.ccfme.org/pediatric-congenital17) for more information on topics, submission procedures, review process, and more.

Contact Robert Stewart, MD at [stewarr4@ccf.org](mailto:stewarr4@ccf.org) or by phone at 216.444.9125.

Abstracts will be published in the Cleveland Clinic Journal of Medicine.

# 2nd Annual Advances in Pediatric and Congenital Heart Summit: Navigating Shone's Complex

## Agenda

Thursday, November 9, 2017

### Summit Breakout Sessions

#### ECHO Session

8:00am to 5:00pm (lunch on own from 12:00 to 1:00pm)

Chaired by: *Riyadh Abu-Sulaiman, MD and Francine Erenberg, MD*

This session will be:

A comprehensive ECHO session for the assessment of left heart obstructive lesions. Featuring a live transmission from the operating room utilizing 2D and 3D transesophageal echocardiogram modalities. Offering interesting case discussions during "Read with the Expert" opportunities. Playing ECHO Jeopardy, with prizes for the winners.

Cost: \$125.00

---

#### Surgeon Video Session

12:30pm to 2:00pm

Chaired by: *Hani Najm, MD, Robert Stewart, MD and Gosta Pettersson, MD*

The purpose of this session is to assist the Pediatric and Congenital heart surgeon advance in management of Shone's Complex and other difficult congenital heart challenges. There will be opportunities for dialogue during and after video sessions to advance clinical expertise while in the operating room. The goals for the session are: 1. Increase capability in initiating proven techniques in the management of acute problems, 2. Strategies for re-directing priorities during unanticipated challenges, 3. Learn the advantage of advance planning with the benefit of 3D printing.

Please submit videos related to Shone's Complex or other complex surgical cases to Hani Najm, MD at [najmh@ccf.org](mailto:najmh@ccf.org).

Cost: \$50.00

---

#### Pediatric Cardiac Cath Nightmares

2:00 to 3:30pm

Chaired by: *Lourdes Prieto, MD, Patcharapong Suntharos, MD and Tamar Preminger, MD*

Not all procedures go as planned. Unexpected anatomical and technical challenges in the pediatric and congenital catheterization laboratory will be discussed.

Please submit cases related to Shone's Complex or other complex cases to Lourdes Prieto, MD at [prieto1@ccf.org](mailto:prieto1@ccf.org).

Cost \$50.00

The Summit Breakout Sessions will be held in meeting rooms on the second floor of the Cleveland Clinic InterContinental Hotel. The Summit on Friday November 10 and Saturday November 11, 2017 will be held in the Cleveland Clinic InterContinental Hotel on the third floor Bank of America Conference Center.

## Faculty and Participant Reception/Dinner (optional)

Please consider attending the Summit Faculty and Participant reception/dinner on Friday evening November 10, 2017 at the DoubleTree Tudor Arms Hotel located at 10660 Carnegie Ave., Cleveland, OH. This dinner will provide an opportunity to meet the faculty in person and to further discuss topics of the day. An additional fee of \$50.00 per registrant is required for the reception/dinner. Reservations can be made when registering. Guests are welcome for an additional cost of \$50 per person.

# 2nd Annual Advances in Pediatric and Congenital Heart Summit: Navigating Shone's Complex

## Friday, November 10, 2017

7:15 am	Registration/Continental Breakfast/Exhibitors	<b>Session 3</b>
8:00am	Welcome <i>Delos M. Cosgrove, MD</i>	12:45pm Keynote Speaker: Fetal and Neonatal Intervention for Shone's Complex
8:15am	Patient Experience	1:15pm Interventions After Repair of Shone's Complex
<b>Session 1</b>		1:30pm Complex Multilevel Mitral Valve Stenosis
8:30am	Keynote Speaker: Anatomical Challenges of Shone's Complex Hearts	1:45pm Ross Procedure
9:00am	Aortic Arching Imaging in Shone's Complex	2:00pm Discussion
9:15am	Intracardiac Images of Shone's Complex	2:30pm Break/Exhibitors
9:30am	Pathophysiology Management of Shone's Hearts	2:45pm Keynote Speaker: Surgery in Less Privileged
9:45am	Discussion	3:15pm Arrhythmias in Mitral Stenosis
10:15am	Break/Exhibitors	3:30pm Fostering a Quality Improvement Culture
<b>Session 2</b>		3:45pm Quality/Outcome Criteria in Complex Cardiac Disease
10:30am	Keynote Speaker: Unsolved Problems in Congenital Heart Disease	4:00pm How Important is the Data???
11:00am	Managing the Borderline LV	4:15pm Discussion
11:15am	Management of Complex LVOTO	4:30pm Adjourn
11:30am	Discussion	
12:00pm	Lunch/Exhibitors	

## Saturday, November 11, 2017

7:30am	Continental breakfast	11:30 am Debate#2 Critical Aortic Stenosis
8:00am	Abstract presentations	Debate: Balloon Valvotomy vs. Surgical Valvuloplasty
9:30am	Keynote Speaker: Extra-Cardiac Multi-organ Manifestations of Complex Cardiac Disease	12:15 pm Discussion
9:45am	Adults with Shone's Complex	12:30 pm Closing Remarks/Adjourn
10:00am	Discussion	
10:30am	Break/Exhibitors	
10:45am	Debate#1 HLH  Debate: Only the Ventricle Matters vs. Only the Mitral Valve Matters	

### Parent Session (non-CME) 1pm to 5pm

This will be a unique opportunity for patients and parents of children with CHD to hear from the experts on topics that never seem to be thoroughly covered during a routine appointment.

## General Information

### Location

#### Cleveland Clinic InterContinental Hotel and Bank of America Conference Center

9801 Carnegie Avenue  
Cleveland, OH 44106  
Phone: 216.707.4100 or 877.707.8999

### Hotel Accommodations

A block of rooms have been reserved at the InterContinental Hotel for Summit attendees.

Please make reservations directly with the hotel by October 27, 2017 to qualify for the special rate.

To make your reservations, contact the hotel at 855.765.8709 and identify yourself as an attendee for the Summit for special rates:

#### InterContinental Hotel

Use online code UX3 or bit.ly/2sF2BDq  
9801 Carnegie Avenue, Cleveland, OH 44106

Other accommodation options for Summit attendees:

#### InterContinental Suites

8800 Euclid Ave., Cleveland, Ohio 44106  
216.707.4300

#### Holiday Inn Cleveland Clinic

8650 Euclid Ave., Cleveland, Ohio 44106  
216.707.4200

### Parking

Parking is available in the East 100th Street Visitor's Parking Garage at prevailing rates. Parking is available at the hotel for an additional charge.

### Summit Information

For further information about the Summit, contact Janet Zaibek at zaibekj@ccf.org or by phone at 216.448.6351.

### Accreditation

The Cleveland Clinic Foundation Center for Continuing Education is accredited by the Accreditation Council for Continuing Medical Education to provide continuing medical education for physicians.

The Cleveland Clinic Foundation Center for Continuing Education designates this live activity for a maximum of 19.75 *AMA PRA Category 1 Credits*™. Physicians should claim only the credit commensurate with the extent of their participation in the activity.

Participants claiming CME credit from this activity may submit the credit hours to the American Osteopathic Association for Category 2 credit.

### Faculty Disclosure

The Cleveland Clinic Foundation Center for Continuing Education has implemented a policy to comply with the current Accreditation Council for Continuing Medical Education Standards for Commercial Support requiring resolution of all faculty conflicts of interest. Faculty declaring a relevant commercial interest will be identified in the activity syllabus.

### Americans with Disabilities Act

The Cleveland Clinic Foundation Center for Continuing Education fully intends to comply with the legal requirements of the Americans with Disabilities Act. If you need assistance, please notify Janet Zaibek at zaibekj@ccf.org at least two weeks prior to the activity.

### Study References

Complimentary WiFi will be available.

**Recording or reproducing of this activity in any format is prohibited.**

### Registration fee(s) for November 10 and November 11, 2017

	On or Before 10/15/17	After 10/15/17
Physician	\$400	\$450
Resident*/ Fellow*	\$150	\$200
Non- Physician	\$125	\$175
Alumni	\$360	\$410
*Letter from program director is required to receive the discounted fee. If letter is not received two weeks prior to the activity, the full physician fee will be charged		

Faculty and Participant Reception/Dinner (optional)	\$50 per person
--	--------------------

No per day pricing is available

Visit [www.ccfme.org/pediatric-congenital17](http://www.ccfme.org/pediatric-congenital17) for complete registration information.

### Registration and Cancellation

Preregistrations are accepted until 8:00am ET November 8, 2017. In case of cancellation, a full refund will be made if canceled by November 1, 2017. After November 1, 2017, a \$50.00 cancellation fee will be deducted from your refund. Email notification of your cancellation by November 1, 2017 is required to process your refund.

For questions about registration or cancellation, email us at [cmeregistration@ccf.org](mailto:cmeregistration@ccf.org) or call 216.448.8710.

*Cleveland Clinic Center for Continuing Education reserves the right to cancel or postpone an activity at our sole discretion. In the unlikely event that this occurs, any registration fee(s) paid will be refunded. Be advised that Cleveland Clinic is not responsible for related costs including airline tickets, hotel costs, or any similar fee penalties incurred as a result of any trip cancellations or changes.*

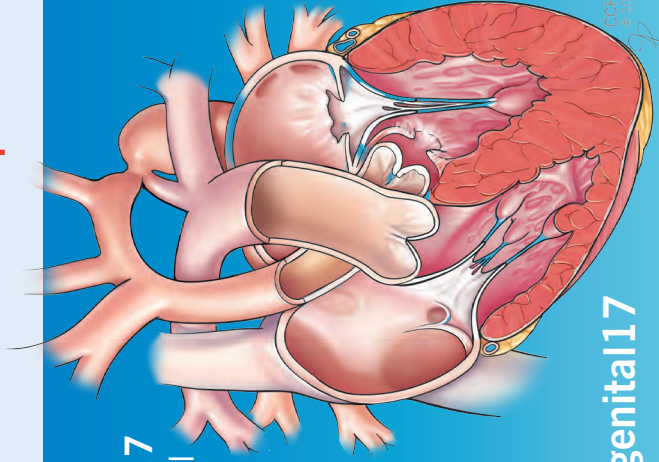


# 2nd Annual Advances in Pediatric and Congenital Heart Summit: Navigating Shone's Complex



The Cleveland Clinic Foundation  
9500 Euclid Avenue, CR11  
Cleveland, OH 44195

Thursday, November 9 –  
Saturday, November 11, 2017  
Cleveland Clinic InterContinental  
Hotel and Bank of America  
Conference Center  
Cleveland, OH



Register Today!  
[ccfcmc.org/pediatric-congenital17](http://ccfcmc.org/pediatric-congenital17)