



ROCK-N-ROSE



NEWSLETTER OF THE EAST TEXAS GEM & MINERAL SOCIETY

PAGE 1

VOLUME 40

TYLER, TEXAS

ISSUE 8

AUGUST 2014

Coming Shows, 2014

October 11-12

Temple, TX
Tri-City G&MS
Mayborn Civic Ctr.

October 17-19

Austin, TX
Austin G&MS
Palmer Events Ctr.

Victoria, TX
Victoria G&MS
Community Ctr.
2905 East North St.

November 01-02

Amarillo, TX
Golden Spread G&MS
Amarillo Civic Ctr.
Exhibition Hall

Midland, TX
Midland G&MS Midland Ctr.

PRESIDENT'S MESSAGE

I had a chance in July for a 6 day rockhounding trip to the Franklin, North Carolina area. This was a pretty good scouting trip, but it didn't give me much time to do a lot of rock hunting. I met a bunch of nice members of the Franklin Gem & Mineral Society while visiting their mineral museum. Also met some members of the MAGMA Club and Franklin Club when we were out in the area collecting. I would have liked to had more time, the Gem & Mineral Show was coming up that weekend and the MAGMA Rockhound Round-up was the week following the show.

I had a great time at the SCFMS Convention, and I gleaned as much information from the members of the other clubs as I could. Those folks with the Baton Rouge Gem & Mineral Society sure were friendly. Also, there were a lot of awards won by our club members. We even won a couple at the AFMS Convention. I'm sure Susan Burch will tell you all about them.

Now that I have all that business out of the way, it's time to get out and find some rocks. I'm on the road right now heading for Colorado, from there I'll work my way up toward the Northwest. I definitely think there will be a couple of good club programs come out of this trip. If I can remember to take pictures. My rock fever has always been a problem when I get out in the field. It causes me to forget to take notes and pictures. The better the collecting area is, the worst the symptoms are.

One more reminder, the election for club officers is coming up at our September meeting. Bill Faulkner will not be able to serve as Treasurer for another term. The rest of us currently in office will serve another term if needed, but we encourage members to step up and fill our offices. If you might be interested in serving in a club office, please let someone know.

Don't forget Keith's yearly rock sale is on September 6th. Anybody that has ever attended knows that this is an event you don't want to miss. All that said, it is looking like I won't be back in time to attend. Maybe I will be able to talk him in to a private tour.

The September meeting will be on September 8th, due to the Labor Day holiday. Also we will have our Annual Auction at the October monthly meeting, this is our second biggest fund raiser. So in October bring all those items you want to donate to the club to be auctioned off, and bring your checkbooks or plenty of cash. And don't forget to invite some of your friends.

Remember the club fiscal year starts in October, so membership dues are due in October. Everybody renewing your membership please try to take care of this by the October meeting.

Kinney Polve

INSIDE THIS ISSUE

2. August Meeting Minutes
3. Lapidary Group / Rock Sale
4. Member Happenings
5. Member Happenings
6. Poem / Thanks
7. Bench Tips by Brad Smith
8. Officers and Directions



AUGUST MEETING MINUTES

Meeting was called to order on August 4, 2014, at 6:55 pm by President Kenny Polve. Minutes were approved as printed in the newsletter. Michael Howe made the motion and it was seconded by Penny Hawkins.

Newsletter: Susan Burch invites all members to submit articles for the newsletter. You can help keep up the interest.

Lapidary Sub Group: The group will meet Saturday, August 9th at the home of Bill Faulkner. The program will be an open forum so bring your questions, projects that are finished or projects that are still in the creating phase.

Announcements: Terry Roberts has information on rock hunts led by Terri Smith. The 2nd weekend in October will be a hunt at the Walker Ranch. September 6th and 7th will be a guided field trip in Uray and Silverton, Colorado. If you are interested contact Terry for further information.

September 6th will be a backyard sale at the home of Keith and Toni Harmon. Everyone always has a great time finding buckets of rocks at the annual event.

The South Central Convention will be August 9th and 10th in Baton Rouge. Kenny and Susan will attend.

August 4th Kenny Polve, Vicky Polve and Kanon Angulo presented a program on raptors for the Discovery Science Center summer camp. The kids were eager learners.

The paperwork for the 501 3C is ongoing. Kenny will have a report at the next meeting.

September will be time for a board meeting. Also in September insurance and dues need to be paid to the South Central Federation.

The annual Gem and Mineral Show director will be Keith Harmon and he will be assisted by Becky Whisenant. Keith has started the advertising.

New Business: The next meeting will be September 8th due to the first Monday being Labor Day. Terry Roberts will present the program.

The October meeting will be time to pay dues, elect officers, and the annual auction. You may pay your dues at anytime now. Be looking for some unusual items for the annual auction. We like for this to be an exciting event and a good money maker.

A motion was made by Keith Harmon to adjourn the business meeting. It was seconded by Terry Roberts. A break followed for refreshments. A program on rock hunting in Franklin, North Carolina was presented by Kenny Polve.

Respectfully submitted,

Carolyn Davis

**AUGUST LAPIDARY/JEWELRY GROUP MEETING**

Five members of the Lapidary/Jewelry Group met at the home of Bill Faulkner on August 9. Terry Roberts brought 3 new wire wrapped cabs to show the members as well as the polished halves from the "sweet potato" nodule that he collected from the Walker Ranch in April. John Schultz brought a large assortment of cabs that he had polished to show the group and identified and discussed several of the unique cabs. The members then explained what equipment is needed for making cabs to a new member and where to locate the items. He was also interested in faceting and Dorence "D" Clifton discussed some of the faceting machines and a school that he could attend to learn how to facet if he wanted. "D" also offered to teach the new member how to facet using his personal faceting machine. The meeting ended around 4:00 pm. The next meeting of the L/J group will be at the home of Terry Roberts on Saturday, September 13. Terry Roberts



Backyard Rock & Equipment Sale

WHO: Keith and Toni Harmon

WHEN: September 6, 2014

9a.m. until 5p.m.

WHERE: 9116 US HWY 84 South
Rusk, TX 75785

903-316-2967/ keithharmon19@yahoo.com

OVER 40 TONS OF ROCK OF VARIOUS TYPES

– AT LEAST 10 TONS NEW SINCE LAST SALE

INCLUDING BUT NOT LIMITED TO: agates, jaspers, obsidians,

Jade, palm wood, Arizona wood, tumbling rough, large rock, Cutting material.

USED EQUIPMENT: SAWS, GRINDERS, POLISHING UNIT
VIBRATING LAPS, FLAT LAPS, SPHERE MACHINE, TUMBLERS

COST: ROCK: FROM \$0.50 TO \$4.00 PER POUND AVERAGE

EQUIPMENT: INEXPENSIVE FOR WHAT IT IS.

PLEASE - NO EARLY SALES.

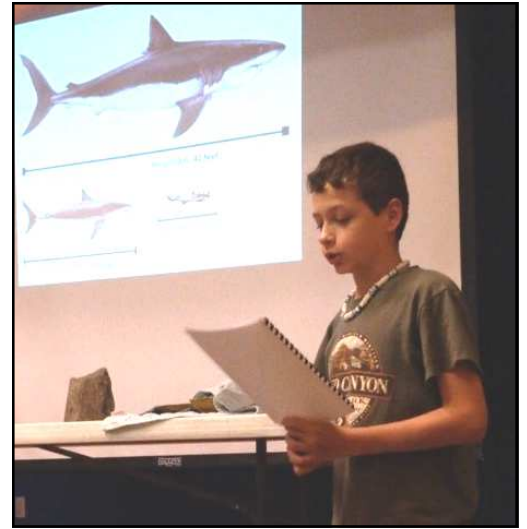


MEMBER HAPPENINGS...

PREDATORS OF THE PAST PROGRAM

ETGMS members Kanon Angulo, pictured at right, Vicky Polve and Kinney Polve presented a program at the Discovery Science Place's summer camp. It was titled Predators of the Past. This was a first for our Junior member Kanon, but you wouldn't have known it by the way he presented the information.

Kinney Polve



CARROLL H. GRASER



Carroll Herman Graser was born July 27, 1938, in the Harmony Community to Herman William and Louise Carroll Graser. He died peacefully at home surrounded by family on Aug. 5.

He will be dearly missed by his loving wife, Darlene Graser; daughter Erin Rhone and husband Jerry and son, Adam Graser and wife Toni, all of Palestine, and daughters, Shannon Lafontaine and Sarah Lafontaine both of Ottawa, Canada; and numerous other family and friends.

Carroll was a veteran of the U.S. Marine Corps and spent 42 years in the telephone installation and service industry. He was a member of the Retired Telephone Employees Group of Palestine and the East Texas Gem & Mineral Society of Tyler. Memorial services were held Aug. 9. at Herrington/Land of Memory Funeral Home Chapel. View online at www.herringtonfuneral.com



Newsletter editor Susan Burch and President Kinney Polve attended the authors' and editors' breakfast Aug. 9 in Baton Rouge, La. Ms. Burch and Mr. Polve received awards and certificates for literary items entered into the South Central Federation of Mineral Societies and the American Federation of Mineral Societies annual contests. Other club members also received certificates which will be handed out at the Sept. meeting. You will have to attend to be the next to know.





MEMBER HAPPENINGS CONTINUED

SCFMS SCHOLARSHIP

At the awards banquet during the South Central Federation of Mineral Societies convention in Baton Rouge Aug. 9, Keith Harmon was acknowledged as having contributed to the education of others in Earth Science fields. Pictured at left with Anne James of the SCFMS accepting the award. The SCFMS named him as the honoree for the 2014 scholarships.



Two graduate students were selected from Stephen F. Austin State University to receive the scholarships, as Keith Harmon is an Alumni. Pictured left to right, are Mr. Harmon, Wesley Turner, who is majoring in economic minerals and petroleum geology, and Garrett Harris, specializing in the hydrology of Central Texas and the Llano Uplift.

Congratulations gentlemen!



WELCOME TO OUR FAMILY

Keith and Toni Harmon were married in April. She has joined him in the hobby also. Pictured at left in their booth at the Baton Rouge Gem & Mineral show.

Best Wishes to you both!





Rockhounding Colorado By Kinney Polve

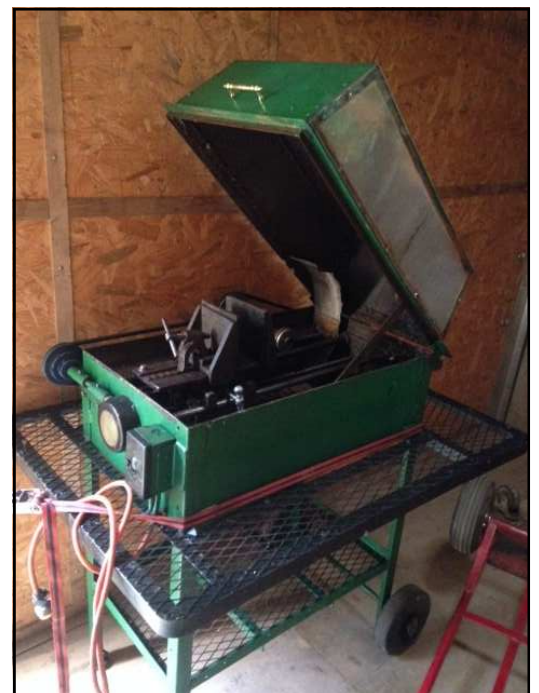
Here we go on the road once more,
Hunting for rocks that we adore.
Most of the rocks that we love best,
Are normally located way out west.
So we'll hop in our truck and drive for miles,
Hoping to return with great big smiles.
To the Colorado mountains way up high,
We hope in that thin air we do not die.
We'll look for old mines and tailing piles,
Even if we have to drive for miles.
Silverton would be a good place to start,
But going in old mine shafts isn't too smart.
I hope we find a lot of Rhodonite,
And some Silver would be really alright.
You would be happy if you only knew,
When we collected rock we got plenty for you.



Photo submitted by Kinney Polve.
12,000ft. near Silverton, CO.



A special thanks to Earnest and Mike Howe for their donation of a 20" vibra-lap and a 14" slab saw to the club.



**BENCH TIPS BY BRAD SMITH****SILVER SOLDER FROM SCRAP**

Sometimes you need a lot of silver solder to complete a piece the way you want it to be. For me it was when I was trying to join several castings. But silver solder is expensive, so I found a way to make my own from scrap with a little help from a penny.

First step is finding out what's in a solder. A search through the reference books (Tim McCreight or Erhard Brepohl) or a Google search will turn up recipes like:

- * Hard - AG 80% CU 13% ZN 7%
- * Medium - AG 70% CU 20% ZN 5%
- * Easy - AG 63% CU 30% ZN 7%

The silver (AG) and the copper (CU) are easy to come by, but finding some zinc (ZN) has always been my problem until I found out that our pennies are almost all zinc. According to Wikipedia a US penny minted after 1982 weighs 2.5 grams and is 97.5% ZN and 2.5% CU. So all I had to do is add a penny to some copper and a pile of silver scrap.

I chose to use Sterling scrap so I adjusted for the amount of copper in it as well as the amount of copper from the penny. Here's what I used for components of Medium solder:

- * Sterling - 36.90 grams
- * Copper - 9.35
- * Penny - 2.50

Melt the silver and copper first in a melting dish, mix well with a carbon rod or titanium solder pick, add the zinc (penny) last, mix again, and pour into a small mold. The zinc is added last because melting it causes some to vaporize, and the fumes are a safety problem (They're a gray-green color). Be sure to have good ventilation.

To check the solder's melting temperature was correct (medium), I put a sample of the homemade solder on a piece of copper sheet along with a known sample of hard, medium and easy solders. I then heated the plate from the bottom and watched as the easy first melted, the medium melted, the homemade melted, and finally the hard.

Additional notes on converting the ingot to sheet, strip or wire form - If you have access to a rolling mill, that will be the fastest way to proceed. Either roll out the ingot into a sheet and cut strips or roll it out as wire if your mill has the grooves. If you don't have a mill, all you have to do is forge out the ingot into a rough sheet of the gauge you'd like and then cut thin strips with bench shears. Be sure to anneal the sheet every so often as you forge it.

FREE BENCHTIPS E-BOOK

If you have a Kindle, there's two ways to get a copy of Brad's Bench Tips book for free. Amazon's new Unlimited program let's you download as many e-books as you want, and you can try out the program free for a month. Or if you are already in Amazon's Prime program to get free the shipping or to download movies, Prime lets you borrow the book for a month at no cost.

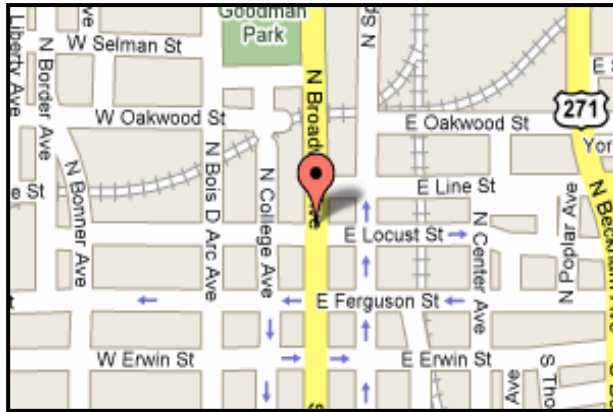
Please use the following attribution with each publication: Get all 101 of Brad's bench tips in "Bench Tips for Jewelry Making" on Amazon.

Note: If you distribute your newsletter electronically, I'd appreciate the above title of the book to be a live link to <http://amazon.com/dp/0988285800/>



CLUB OFFICERS

PRESIDENT:	Kinney Polve 8665 CR 373 D Henderson, TX 75654	903-646-3189
VICE PRESIDENT	Terry Roberts 12243 Cross Fence Trail Tyler, TX 75706	903-881-5108
TREASURER:	Bill Faulkner 309 Princes St. Whitehouse, TX 75791	903-539-0439
SECRETARY:	Carolyn Davis 110 VZCR 2518 Canton, TX 75103	903-848-1312
FIELD TRIP CHAIRMAN:	Randy Harmon 13621 Shannon Lindale, TX 75771	903-539-0975
SHOW CHAIRMAN:	Keith Harmon 9116 US HWY 84 W Rusk, TX 75785	903-795-3860
CLUB ADDRESS FOR MEMBERSHIP DUES:	East Texas Gem & Mineral Society P. O. BOX 132532 Tyler, TX 75713-2532	



THE EAST TEXAS GEM AND MINERAL SOCIETY MEETS ON THE FIRST MONDAY OF EACH MONTH, UNLESS THAT DAY IS A HOLIDAY, THEN THE MEETING IS MOVED TO THE SECOND MONDAY. WE MEET AT THE DISCOVERY SCIENCE PLACE, 308 NORTH BROADWAY, JUST NORTH OF DOWNTOWN TYLER, TEXAS. MEETINGS BEGIN AT 6:45 P.M.

NOTE TO EDITORS

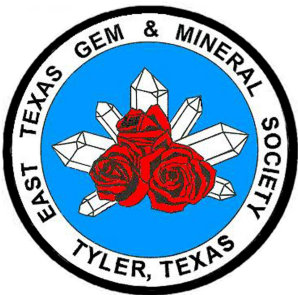
Feel free to use contents and graphics for non-profit newsletters. Give credit when and where due.

Purpose of the East Texas Gem & Mineral Society

Is to promote the study of geology, mineralogy, fossils and the lapidary arts. The public is always invited to attend all club meetings.

Annual dues are \$10.00 for adults and \$2.50 for juniors.

Please send any info or articles to be included in the newsletter to the Editor by the 15th of the month. Please, keep your address, phone and email information up-to-date, so that we can get the newsletter to you in a timely manner. Out-of-date information costs the club time and money in returned newsletters. If you need an issue dealt with quickly, don't hesitate to call, as this is the best way to reach me. Thank you... SB



EDITOR: Susan Burch
20427 US. Hwy 69 S.
Alto, TX 75925

E-Mail: rockroseeditor@hotmail.com
Phone: 936-615-5397