

NEWSLETTER OF THE EAST TEXAS GEM & MINERAL SOCIETY

PAGE 1

VOLUME 42

TYLER, TEXAS

ISSUE 3

MARCH 2016

Coming Shows, 2016

April 09-12

Abilene, TX
Central Texas G&MS
Abilene Civic Center
North 6th & Pine

April 15-17

Alpine, TX
Chihuahua
G&MS
Alpine Civic Center

April 30-May 1

Waco, TX
Waco G&MS
Extraco Events Center

SCFMS

May 7-8

Lubbock, TX

Lubbock Gem & Mineral Society
Lubbock Civic Center

May 21-22,

DeRidder, LA
DeRidder G&MS
Beaugard Parish
Fairgrounds
506 West Drive

INSIDE THIS ISSUE

2. March Meeting Minutes
3. Online resource/Rockhunting
4. Field trip Report/Cab of the Month
5. AFMS Springs Into Action
6. SCFMS Annual Convention
7. Bench Tips/Lapidary Group Update/National Geographic
8. Officers and directions

MESSAGE FROM THE PRESIDENT

Well, spring time is upon us, but it doesn't look like I'm going to find enough time to take an extended rock hunting trip toward the northwest like I had hoped. With spring gardening, and all the honey-dos Vicky keeps coming up with. I'm hoped our March field trip, to hunt quartz crystals, and a trip to Keith Harmon's rock pile will curb my desire to hit the trail. I hope with the warming temperatures that the rest of you will get a chance get out in the field and do some collecting.

There was a lot of members that signed up for our wire wrapping class, in fact we had to turn a few away. But don't fret, we'll schedule another one soon. Everyone enjoyed the class, and walked away with a better understanding of the wire wrapping techniques. We are currently scheduling Cabochon Making classes. I say classes, because this will be a one on one class for those interested. The classes will be given at Terry Roberts' or my shop, whichever you prefer. Just let either one of us know that you want to take the class, and we will schedule a time and date that fits your schedule.

There was a great turnout for our March club meeting. Those of you that couldn't make it missed an excellent program given by Becky Whisenant on the Burgess Shale. It's always better when we have a firsthand account from someone that has actually been to the location. With that being said, we don't have a program scheduled for the April meeting as of yet. If you are willing to present the program, please contact me.

ETGMS is setting up a booth at the Tyler Mini Makers Faire again this year, on April 16th. If you are interested in helping out and working in our booth, contact me, and I will put you on the list. We ended up being shorthanded last year due to illness, so let's get enough members signed up so we don't have any problems this year.

Kinney Polve





MARCH MEETING MINUTES

President, Kinney Polve called the meeting to order on March 7, 2016 at 6:45 pm.

Kinney welcomed everyone. One visitor, Teresa Regan was introduced.

A silent auction item was up for bid and door prize tickets were available for 25 cents each.

Minutes from the last meeting were approved as printed in the newsletter. The motion was made by Karen Nance and seconded by Fred Mahaffey.

Treasurer Trish Hamilton gave a report.

Lapidary Arts Group: Terry Roberts reported the February 13th meeting was well attended. At Kinney's workshop members learned how to recharge diamond grinding wheels and Linda Carter taught making a bracelet with Swarovski Crystals. On March 5th Kinney and Terry taught a wire wrapping class at Kinney's workshop. All 10 attending were proud of their work but had sore fingers by the end. The March 12th meeting was to be at Terry's home starting at 2:00 p.m. This meeting was cancelled due to illness.

Field Trip: There are pictures of the field trip to the Ross Perot Museum on Facebook. All who attended were impressed. March 26th will be a trip to Arkansas. April will be a trip to Oklahoma. Fred is still working on these plans since it is a overnight trip. Future trips are being planned to the Quail Creek Ranch out of Ft. Worth for quartz crystals, geodes and fossils and a trip to Mason for Topaz. If you are interested in attending any of these field trips let Fred Mahaffey know so that he can give you up-to-date information and let you know of any last minute changes.

Newsletter: A new feature in the newsletter honors "The cab of the month". Please take pictures of cabs that you make and send them to Susan Burch. The hope is that this will help Susan have more input from members. Other features will be offered in the future. Be sure you contribute and be on the look out for new items.

Social Media: Remember to send pictures and articles to Kinney to put on the club's web page and Facebook. We need to put our work out there for anyone with an interest to find out what our club is about.

Announcements:

- Volunteers are needed for the Mini Maker's Fair on April 16th at the Science Museum. We help attendees make Rock Critters. We would like to have cab making demonstrations and wire wrapping demonstrations also. This is a big event and we need lots of volunteers so sign up.
- Put your information on the sign up sheet for a cab making class. This will need to be a one-on-one class since Kinney and Terry only have one cabbng machine each. They will arrange a time and date with you. There will not be a charge for this class.
- Another wire wrapping class will be set up when there is enough interest. let Kinney know if you would like to attend.
- It would be great to start the fossil and mineral sub-group again. If you are interested in leading the group let Kinney know.
- Judith Burleyson is improving after her stroke but still has some procedures ahead of her. We wish her well.
- Ernest Howe's cancer treatments have stopped for now. He will be seeing the doctor for more news. We are looking forward to seeing him at meetings again.

Old Business: The statements for publicity on the annual gem show have been received and paid. According to ticket sales the attendance was a little lower but it was a good show. The dealers were happy with the show. The advertising was good especially the coverage from Channel 7.

New Business: No new business was brought to our attention.

A motion to adjourn the business meeting was made by Trish Hamilton and seconded by Terry Roberts. Tickets were drawn for door prizes. All enjoyed visiting and refreshments.

Becky Whisenant gave the program on The Burgess Shale in Field, British Columbia, Canada.

Our next meeting will be April 4th.

Respectfully Submitted,

Carolyn Davis





Online Geological Archive

Mineral & Fossil Shop



I was sent a link to a great resource on the Web. Some of its features include a directory of rock shops & geology attractions, directory of geology clubs, links to rock, mineral & fossil shows, online presentations & educational resources and recommended locations to visit. Check it out at:

<http://www.virtualmuseumofgeology.com/>

SB



Our next Field Trip is planned for March 26th to hunt Crystals in Arkansas at the Ron Coleman Mine. As of the moment it looks like most who are going are planning to go up Friday evening on the 25th and spend the night, get an early start hunting and then drive back Saturday afternoon. For more information please email or call me. A fieldtrip is planed in April to Oklahoma to hunt the rare hourglass selenite. This will be a two day trip because it is such a long drive. Jack gave me a tip on where we might find lodging fairly close. So I will be checking that out. Fred Mahaffey

Photos selected from The Internet



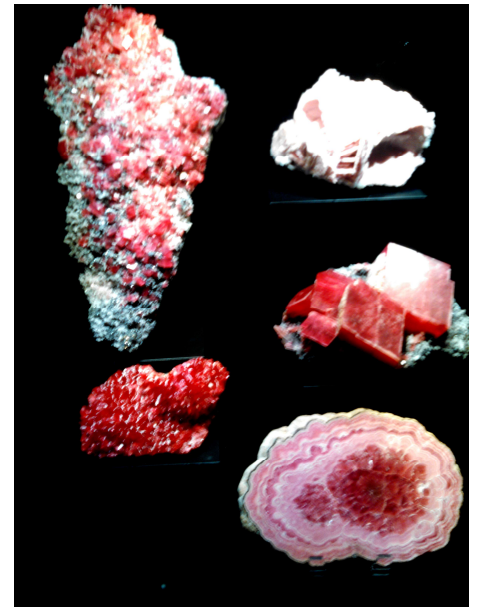


FEBRUARY FIELDTRIP TO THE ROSS PEROT MUSEUM BY FRED MAHAFFEY

It started out as a cloudy day with a chance of rain. So we were glad we were going to be inside. After a short sightseeing trip through the downtown area and dodging little cheerleaders running all over the place. (Turns out the Cheerleader Nationals were also going on next door) We made it to the museum. Once inside we headed to the first floor and started working our way around the exhibits. They were all very informative and the geology one was superb. As we made our way up each floor we saw beautiful mineral displays and fossils, the nature displays were awesome as well. After several pictures and a couple hours of walking we

decided it was time to leave. We apparently got there at the right time because we did not have to wait but there were long lines of kids and folks waiting to be allowed to go in. If you have never been I recommend a visit because it is well worth it.

Photos by Fred Mahaffey



Peanut Jasper from Alpine, Texas

Peanut Jasper from Alpine, Texas area.
Kinney





AFMS Springs into Action

by Matt Charsky, President

For those of us who live with a distinct change of seasons, spring is the time when we spring into action. If you are fortunate to live in the southeast and southwest, your hobby is in full swing with field trips and outdoor gatherings. Up north, all those hobby-related activities that we could not do in winter are now possible, even the dreaded spring cleaning.

More than I care to admit, I get asked the same question repeatedly – what does the AFMS do? I would like to think everybody reads every page of the AFMS Newsletter and is up to speed on what we do. The following highlights are for those people who might have missed an issue or two.



*Lauren Williams and members of the Scholarship Foundation are working to keep scholarship levels the same and our investments on track for 2016. Individuals and clubs may donate to the AFMS Scholarship Foundation throughout the year.

*The Northwest Federation particularly the Willamette Agate and Mineral Society is working hard as the host club of the next AFMS Convention in Albany, OR from July 27-August 1, 2016! In addition, Doug True is planning an inter-regional field trip around the Convention.

*ALAA (although not officially a part of the AFMS, but affiliated with us through common interests) together with John Martin and Mike Nelson continue to decipher the new U.S. Forest Service collecting rules which are likely to hit clubs whose members collect fossils on USFS land. There is similar ongoing work with the Bureau of Land Management.

*Milestones were reached in Junior Activities by Jim Brace-Thompson – over 10 years of conducting the AFMS/FRA Badge Program, 135 clubs and societies have participated in the Badge Program, and over 10,000 badges have been awarded to juniors. Congratulations!

*Carolyn Weinberger and Shirley Leeson are working on the upcoming AFMS 70th Anniversary Celebration.

*Endowment Fund Chair, Cheryl Neary, is collecting donations now and up to the 2016 AFMS Convention. Individuals and clubs are invited to give donations and to purchase tickets for the drawing.

*BEAC Chair, Mark Nelson; Web Site Competition Chair, Dan Imel; and All American Award Chair, Regina Kapta are beginning their work that culminates with award presentations at the 2016 AFMS Convention. Let's keep them busy.

*AFMS Club Rockhound of the Year is a year round reward program and is always open for submittals. Don't you know someone who deserves a pat on the back for all they do for their club and hobby?

*Ron Carman and the rest of the Uniform Rules Committee approved several updates to competitive exhibiting at the recent Austin Convention. These updates will take effect for the 2016 competition and can be found on the AFMS website.

*Ellery Borow keeps us up-to-date with field trip safety because in our hobby safety really does matter.

All these activities occur in addition to the day-to-day functions of our Officers and Committee Chairs not previously mentioned.

That's a quick summary of what we are currently doing. We are blessed to have dedicated individuals who share our same passion for the hobby and we all want the AFMS to spring forward.

Let's support these individuals and thank them for their efforts.

Via AFMS Newsletter March 2016



**IMPORTANT INFORMATION ABOUT
THE 2016 SCFMS ANNUAL CONVENTION
SATURDAY, MAY 7TH, 10A.M. – 6P.M.
SUNDAY, MAY 8TH, 10A.M. – 5P.M.**

Rooms can be reserved at The MCM Elegante Hotel & Suites for \$99 per night, there are 25 rooms blocked at that rate, be sure to mention the LGMS show. Cut off for reservations at this rate is April 14th, 2016.

www.mcmelegantelubbock.com

801 Ave. Q

Lubbock, Texas 79401

Phone: (806) 763-1200

This Hotel is walking distance to the Civic Center (2 blocks); however the parking at the Civic Center is free and plentiful.

The Editors and Webmasters Breakfast will be on Saturday morning at 8a.m. at the civic center, upstairs in the Terrace suite. Pre-registration is due by April 1st, 2016.

The SCFMS annual meeting will be on Saturday at 1p.m.

There will be an awards Banquet at 7p.m. Pre-registration is due by April 1st, 2016. A cash bar will be available. We will have a Rolling Rock Club meeting on Sunday at 8a.m.

The deadline for registration for the Breakfast, the Banquet, and for competitive cases will be April 1st, 2016.

The show will feature Vendors with Jewelry, Loose Stones, Rough, Cabs, Slabs, Geodes, Beads, Gemstones, Mineral Specimens, Crystals, Fossils, Spheres, and Lapidary Tools. Silent auction and Hourly door prizes, Drawings for three grand prizes, one for Kids, one for Adults and one for Mothers that come on Mother's day. Numerous free exhibits and demos and big rocks you can touch! Our kid's area will have games and grab bags, and we will have displays by our youth. Proceeds support the LGMS (501(c)(3) organization), and scholarships in the Earth Sciences at Texas Tech.

SCHEDULE FOR SCFMS CONVENTION & SHOW

Lubbock, Texas; May 7th & 8th 2016

Friday, May 6th

8:00 a.m. Club Setup begins, Civic Center Exhibit Hall

12:00 p.m. Dealer set up begins, Civic Center Exhibit Hall

4:00 p.m. Exhibitor set up begins, Civic Center Exhibit Hall

Saturday, May 7th

7:30 a.m. Check in for Editors and Webmasters Breakfast

8:00 a.m. Editors & Webmasters Breakfast, Civic Center Terrace Suite

9:00 a.m. All Exhibits must be in place

10:00 a.m. Show Opens

10:15 a.m. Judges & Clerks Meet in Judges' area, Civic Center Exhibit Hall

11:00 a.m. SCFMS Competition Judging begins

1:00 p.m. SCFMS Annual Meeting, Civic Center Terrace Suite

3:30 p.m. Judges and Exhibitors Meeting.

6:00 p.m. Show Closes

6:30 p.m. Social hour - cash bar available, Civic Center Terrace Suite

7:00 p.m. Awards Banquet, Civic Center Terrace Suite

Sunday, May 8th

8:00 a.m. Rolling Rock Club Meeting.

10:00 a.m. Show opens

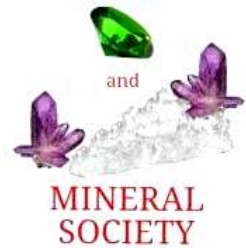
4:45 p.m. Drawing for Grand Prizes

5:00 p.m. Show Closes; all visitors must leave so takedown can begin

Via SCFMS Newsletter March/April 2016

**SCFMS ANNUAL SHOW
HOSTED BY:**

**LUBBOCK
GEM**



**Saturday May 7th, 2016
10am - 6pm
Sunday May 8th 2016
10am - 5pm**

**All events
will be at:**

**Lubbock Mem.
Civic Center
1501 Mac Davis Ln
Lubbock, TX**

BENCH TIPS BY BRAD SMITH



GRIPPING SMALL DRILLS—Drilling small holes can be a problem. With drills that are less than 1 mm (18 gauge or .040 inches), some chucks will not tighten down well enough to hold the drill securely.

The problem is easily solved in either of two ways - with a chuck adapter or by buying your small drills with a 3/32 inch shank size. Either way you have a large shank to be gripped in your drill press, Foredom or Dremel, so changing bits is fast and easy.

PRE-MADE BEZEL CUPS—As a general rule of thumb I assume it's going to take me 15 - 20 minutes to make a bezel for an ordinary cabochon, so for some projects buying pre-made cups can save a lot of time. But if you go this route, keep in mind three things. First, try to get cups made from fine silver, not sterling. Fine silver is softer and burnishes over the stone more easily.

Second, you may have trouble matching the shape and size of the stone with the shape and size of the bezel cup. Purchased cups can only be found in a limited number of standard sizes. You may have to adjust your choice of gemstone to match the cup. The other consideration is that pre-made cups often have fairly low side walls. While these are fine for low-dome stones, they're not dependable for stones with steep side walls.

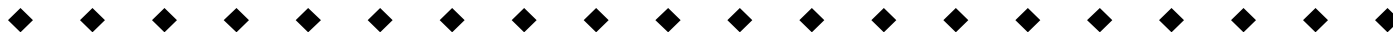
Lastly before setting, check the fit of your gemstone in the cup, particularly around the bottom. The bottom corners of a stamped cup are much more rounded than a bezel you would fabricate yourself. This causes a problem with stones that have a sharp edge around the bottom. Burnishing the bezel over one of these stones will place a lot of stress on the stone and may cause it to crack. To avoid this, I round off the bottom edge of the stone with a diamond file (or use sandpaper on soft stones).



Please include the following attribution with each publication:

"Bench Tips for Jewelry Making" and "Broom Casting for Creative Jewelry" are available on Amazon www.amazon.com/dp/0988285800/ and www.amazon.com/dp/0988285835

www.BradSmithJewelry.com



MARCH JEWELRY/LAPIDARY GROUP

Hi Folks: The March meeting of the L/J Group was to be at my house on March 12 starting at 2:00 p.m. However, this meeting had to be cancelled due to illness. Terry Roberts

National Geographic Channel

Pete Keiser reminds us about a new series on The National Geographic Channel called "Mine Hunters". It's on at 9:00 P.M. every Tuesday night.



Check us out on the web: WWW.ETGMS.COM

THE EAST TEXAS GEM AND MINERAL SOCIETY

Purpose of the East Texas Gem & Mineral Society: Is to promote the study of geology, fossils and the lapidary arts. The public is always invited to attend all club meetings.

MONTHLY MEETING:

First Monday of the month unless a holiday,
then the second Monday, at 6:45 p.m.

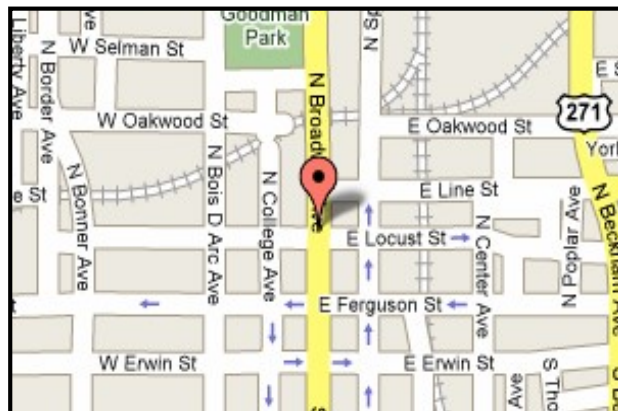
WHERE:

The Discovery Science Place
308 N. Broadway
Tyler, Texas

ANNUAL DUES:

Adults: \$10.00
Juniors: \$2.50 with adult membership
Family: \$20

NOTE TO EDITORS: Feel free to use contents
for non-profit newsletters. Give credit when and where due.



NEWSLETTER CONTENT: Please send any info or articles to be included in the newsletter to the Editor at the address or email listed below by the 15th of the month. Please, keep your address, phone and email information up-to-date, so that we can get the newsletter to you in a timely manner. Out-of-date information costs the club time and money in returned newsletters. If you need an issue dealt with quickly, don't hesitate to call, as that is the best way to reach me. Thank you... Susan Burch

CLUB OFFICERS:

PRESIDENT:
903-646-3189

Kinney Polve
8665 CR 373 D
Henderson, TX 75654

SECRETARY:
903-567-4162

Carolyn Davis
1042 VZCR 4201
Canton, TX 75103

VICE PRESIDENT:
903-881-5108

Terry Roberts
12243 Cross Fence Trail
Tyler, TX 75706

**FIELD TRIP
CHAIRMAN:**
903-978-0268

Fred Mahaffey
1637 CR 1306
Rusk, TX 75785

TREASURER:

Trish Hamilton
P.O. Box 132532
Tyler, TX 75713

**SHOW
CHAIRMAN:**
903-795-3860

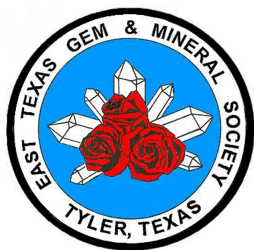
Keith Harmon
9116 US HWY 84 W
Rusk, TX 75785

CLUB ADDRESS:

East Texas Gem & Mineral Society
P. O. BOX 132532
Tyler, TX 75713-2532

SEND DUES TO:

Trish Hamilton
P.O. Box 132532
Tyler, TX 75713



EDITOR: Susan Burch
20427 US. Hwy 69 S.
Alto, TX 75925

E-Mail: rocknroseeditor@hotmail.com
Phone: 936-615-5397