



ROCK~N~ROSE



NEWSLETTER OF THE EAST TEXAS GEM & MINERAL SOCIETY

PAGE 1

VOLUME 42

TYLER, TEXAS

ISSUE 6

JUNE 2016

Coming Shows, 2016

Aug 13-14 2016
Baton Rouge, LA
Baton Rouge GMS
Marriot Hotel

August 20-21, 2016
Bossier City, LA
Ark-La-Tex G&MS
Bossier City Civic Center

August 27-28, 2016
Gem & Mineral Show
Jasper, TX
Pine Country
G&MS Events Center

September 17-18, 2016
Dallas, TX
Dallas G&MS
Restiol Expo Cen.
Mesquite, TX

October 8-9, 2016
Temple, TX
Tri-City G&MS
Mayborn Civic Cen.

President's Message

Looks like we're starting to get into some hotter temperatures. I sure am glad that the central air is working well in my workshop, because I'm finally getting a lot of time at the capping machine, and that's the way I like it. I was hoping to make a trip up to Oregon this month, but with Vicky's garden putting out vegetables all over the place, it looks like I will have to put that off for another year. After all the hard work she put into it, I would hate to let it all go to waste. At the rate she's going it won't be long until we'll run out storage area. Maybe we'll get a drought, and it will all burn up from the heat, and I can make it to the AFMS Convention at the end of July. The good thing about it is that it gives me time in the A/C doing my lapidary work.

Now that Susan Burch has presented all the awards that club members received at the SCFMS Convention last month, I can say how pleased I am that our club's newsletter and website both took first place in our region. Now I can't wait to see how we fare at the AFMS Convention in July. Congratulations to all the other members that received awards for the articles they contributed to the newsletter, throughout the year. Also a thank you to Susan Burch for making sure all of these were sent in, so they could be judged. So let's keep up the good work.

Lynn Metcalf has taken over the website, and beginning to put her personal touch to the pages. So you might want to take some time to check it out. Also, if any of our members have something that would make a good addition to the site, please contact Lynn. And a reminder to the sub-group leaders and Fieldtrip Chairman, make sure to send Lynn any updated information.

The search continues for a building suitable for a workshop. I want to encourage all of our members to join in on the search. So don't just sit back and expect someone else to do all the work. Remember the saying "If you want it done right, you have to do it yourself". So let's get it done, you're the right person for the job.

A reminder that elections are coming up in September, for new officers. That's only a little over two months away. Carolyn Davis and I won't be running for another term. And I'm sure Terry Roberts wouldn't mind a break also. Anyone interested in taking a more active role in the club and serving in one of these offices, please contact me or one of the other board members. Let's not wait until the September meeting and start trying to draft someone for the empty seats. Things always run smoother when we plan ahead.

Lastly, I want to remind everyone, we're getting into the hotter time of the year. When you're planning your trip in the field, bring plenty of water, and then some. Make sure you stay hydrated. I don't want to hear about any of my friends getting heat stroke this summer. Be Safe.

Kinney Polve

INSIDE THIS ISSUE

2. June Meeting Minutes
3. Minutes Continued/Lapidary-Jewelry Group Meeting
4. Contest Results
5. Field Trip Pictures
6. Endowment Fund/Grilled Lapidarian
2. Bench Tips by Brad Smith
3. Officers and Directions



JUNE MEETING MINUTES

President, Kinney Polve called the meeting to order on June 6, 2016, at 6:45 p.m. He introduced Chris Rasure, Director of the Discovery Science Center. Chris gave a presentation on The Discovery Science Place Cave. Some improvements have been made recently but much more is needed. They are asking us for monetary support. Kinney welcomed all to the monthly meeting and he asked the visitors to introduce themselves. There were no new members.

Two silent auction items were up for bid and door prize tickets were available for 25 cents each. Minutes from the last meeting were approved as printed in the newsletter. The motion was made by Susan Burch and seconded by Penny Hawkins.

Treasurer, Trish Hamilton gave a report.

Lapidary Arts Group: Terry Roberts reported the next meeting would be Saturday June 11th at his home. There will be an open discussion so bring your questions and problems to get help. Also Terry will discuss use of the flat lap. If you want to be on Terry's email list sign up with him.

Mineral and Fossil Groups: David Russ reported that the next meeting of the Mineral Group would be on Tuesday, June 14th at his home. They will be working on identification of minerals and making micro-mounts. The Fossil Group will meet on Thursday, June 16th at his home. The Fossil group will concentrate on fossil preparation. If you are interested in joining these groups sign up with David.

Field Trip: Fred Mahaffey hopes a large group of members will be ready to go to The Crater of Diamonds in Murfreesboro, Arkansas on June 25th. The group will be leaving early Saturday morning and return on Sunday. If you are going you should go to their web site and read all the notes so you will be knowledgeable in where and what to look for. Fred is also working on a fossil hunting trip to Lake Nacogdoches and another trip the last week in July to Missouri. The July trip will be to hunt drizzly quartz and Missouri cite. If you are interested in any of the trips make sure Fred has you contact information. He will keep you informed of last minutes changes. If you would like to carpool notify Fred.

Newsletter: Susan Burch is always looking for additions to the newsletter. Any project you make will be of interest to the group. Send a picture and some information about what you are doing.

Social Media: These articles would be great for you to send to Lynn Metcalf for her to use on our web site and to Kinney for him to use on Facebook. Kinney says we are getting interest on Facebook.

Announcements:

- Kinney thanked those that bring refreshments. All are encouraged to bring a snack item to share.
- The Discovery Center has asked us to be considerate and leave the room clean so it will be ready for the next group. Our bag of trash should be placed in the dumpster at the end of the evening. Anyone having time to help with setting up the room before the meeting and cleaning up the room after the meeting would earn much satisfaction in their service.
- Several members brought rocks to share. They were spread out on a table and it was very busy during refreshment time.
- Susan Burch, Kinney Polve, and Vicki Polve attended the South Central Federation Convention in Lubbock. Susan accepted awards for our club. She announced winners and handed out certificates and plaques. Thanks to Susan our small club collects many awards.

Old Business: The Board looked at a possible building to be used as a clubhouse. It needed many improvements. After securing information on the cost of these improvements it was estimated that it would cost \$48,000 to make it useable. No offer was made. Everyone still needs to keep looking for a possible space. The board is working on the scholarship application.

New Business: Chris Rasure's presentation on the Discovery Science Center came with a request for money to use for improvements to the cave display. We have sponsored this display in the past so after discussion a motion was made to contribute funds to the museum. The motion was made by Becky Whisenant and seconded by Colleen Hayes. The motion passed.

A motion to adjourn the business meeting was made by Colleen Hayes and seconded by Susan Burch. Tickets were drawn for door prizes. All enjoyed visiting and refreshments.

Lynn Metcalf gave the program on her visit to The Crater of Diamonds in Murfreesboro, Arkansas. She gave a good overview of what can be expected on our next field trip and how to prepare ahead of time.

Our next meeting will be July 11th. The program may be on fossils or on a field trip. Come and see what you can learn.

Respectfully submitted,
Carolyn Davis



Cabs of the Month



At right is a Butterfly Wing Jasper cab by Kenny Polve. At left-"cab of the month" is by Terry Roberts, an agate that he collected on the east side of Needle Peak located about five miles north of Santa Elena Canyon in Big Bend National Park. He wants to emphasize that the collecting site is located outside the boundaries of the park. The cab shows a crack at the top that has been filled in by a red mineral. Terry believes the "flaw" in the cab adds additional color and character to the cab.



LAPIDARY AND JEWELRY GROUP MEETING



The June meeting of the Lapidary/Jewelry Group opened at Terry Roberts' house with seven members and one guest in attendance. Terry displayed about two dozen cabs that he completed since the last meeting for the Group's review. Linda Harris showed the group three beautiful Swarovski crystal bracelets that she completed recently (pictured at left). All three were of different designs and one of them took her about five hours to complete. Elsa Jerger showed everyone the rocks she collected on her recent visit to the upper peninsula of Michigan, including some Lake Superior agates. Terry also showed the group a collection of seam agate rough that he collected near Wendover, UT in May, including some slabs that he had cut from some of the better rough material.

Terry led everyone to his shop to show them some beautiful Chinese turquoise that he had sliced for the guest attendee at the meeting. Everyone agreed that the material was high quality and would make highly desirable cabs for jewelry. He also showed the Group how to use an 8-inch flat lap to remove saw marks from a thunder egg nodule that he had cut and how to regulate water flow onto the lap to remove waste material without causing the water to build up under the nodule causing it to hydroplane over the diamond grit. Everyone left the meeting with some new knowledge and appreciation for new lapidary material and machinery.

The July meeting of the L/J Group will be at Kinney Polve's shop on Saturday, July 9.

Bottom right: a display case put together by George Ream (the president of the Wasatch Gem and Mineral Society) showing some prime examples of Wendover plume agate and "angel wing" agate he collected from the Silver Island Mountains north-east of Wendover, Utah and just west of the Bonneville Salt Flats. Terry joined the club at their gem and mineral show and gave them about 20 lbs of Walker Ranch agate biscuits and flower garden agate. George invited him to join the club on a collecting trip to look for Wendover plume agate the following weekend after their show.

I think the plume agate they collect near Wendover looks more like flame agate, but I won't argue with them. I will try to put together a presentation for the club in June or July and bring in some samples of rock I collected there to show the club. Terry





SCFMS Authors and Editors Contest Results

SMALL BULLETINS:

1ST—Susan Burch-East Texas Gem & Mineral Society

WEBSITE:

1ST—Kinney Polve-East Texas Gem & Mineral Society

ADULT ARTICLES:

1ST—Terry Roberts-Shadow and Iris Agates

4TH—Fred Mahaffey-Potential Exploration

7TH—Kenney Polve-In Search of Mozarkite

ADULT POETRY:

1ST—Kinney Polve-Golden Dreams

2ND—Mary Owens-Red River Secret

DRAWN FEATURES:

1ST—Susan Burch-Rock Pox

WRITTEN FEATURES:

2ND—Becky Whisenant-The Rock Hounds Field Guide to Verbs

5TH—Colleen Hayes-May Meeting Program Synopsis

WRITTEN FEATURES—HONORABLE MENTION ALPHABETICAL BY AUTHOR LAST NAME:

Sherry Breedlove-Kissam University Presentation

Susan Burch-April Field Trip Report--Lovelady, Texas Petrified Wood

Carolyn Davis-May Meeting Minutes

Penny Hawkins-October Meeting Minutes

Pete Keiser-Synopsis of the March Club Program

Fred Mahaffey-March Field Trip to Badu Hill and Emerald Ridge Mines

Kinney Polve-President's Message

Terry Roberts-Lapidary/Jewelry Group Meeting





FIELD TRIP PICTURES

PICTURES FROM THE SULFER RIVER FIELD TRIP IN MAY



PICTURES FROM THE ELKHART SELENITE FIELD TRIP





PICTURE FROM THE ELKHART SELENITE FIELD TRIP



AFMS ENDOWMENT FUND

Cheryl Neary, AFMS Endowment Fund Chair reminds us The American Federation Endowment Fund is having a drawing for some wonderful pieces. Of course, She is still seeking donations and requesting that you purchase tickets for the event which takes place late in July at the annual federation convention.

The good news is that it is not too late to either donate an item for the drawing. Your donation could be a mineral specimen, piece of jewelry, cutting rough, fossil, important book, finished cabochons, or other related hobby items. Ideally each item should have an estimated value of \$50 or more to encourage your members (and the general public) to purchase tickets.

Tickets are only \$5.00 each or 5 for \$20.00. You can purchase tickets by sending a self-addressed, stamped envelope to the representative for your Federation. You need not be present to win.



The SCFMS Chairperson is:
Joyce Speed
4680 Wisteria
Dallas, Texas 75211
214-337-9446 llispeed2@gmail.com



GRILLED LAPIDARIAN

A man goes into a restaurant, sits down and starts reading the menu.
The menu says:

- Broiled Accountant \$5.95 per plate
- Fried Engineer \$7.95 per plate
- Toasted Teacher \$7.95 per plate
- Grilled Lapidarian \$25.95 per plate

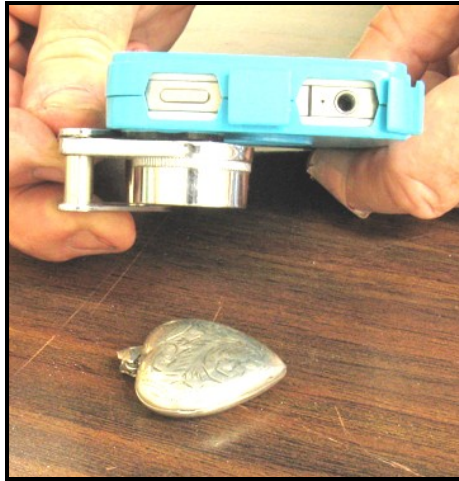
The man calls a waiter over and asks "Hey, why does the Grilled Lapidarian cost so much more?" The waiter says, " Are you kidding? Do you know how hard it is to clean one of them?"

Shared via <http://hubpages.com/art/Lapidary-Jokes-For-The-Discerning-Rockhound#> via SCFMS May/June 2016 newsletter.





BENCH TIPS BY BRAD SMITH



QUICK CLOSE-UPS—Often when trying to get a close-up photo with your iPhone or Android, you end up with a fuzzy, out-of-focus image. Next time try using your loupe over the camera lens. It works quickly and easily.

LITTLE THINGS CAN BITE—Most jewelers treat motorized equipment with caution. We've all heard stories about work pieces com-

ing loose in the drill press or about getting long hair or clothing caught in the polishing machine. It stands to reason that a machine with a motor of a half horsepower or so is going to win out over its operator. We all know that, and I'm not going to harp on it. That's not the point of this story.

I want to talk about the smaller motor powered machines we often use, the ones with little 3 inch diameter motors. For instance, these small motors are used in flexshafts and micro buffers. They're so small that many of us forget caution when using them. I'm guilty of it myself sometimes, and believe me it can get you in trouble. Here's what happened to two people I know.

One friend had a polishing bur bend in the hand piece and then whack the thumb that was holding the work piece so badly that it seemed the bone might be broken. The swelling was substantial, and it took several weeks to regain normal use. A small underpowered motor? I don't think so.

Another friend was using one of the small buffing machines, the kind you can stop when you apply too much pressure to the wheel. Not to worry about such an underpowered beast you say. Wrong, it literally jumped up and bit the hand that feeds it !

Buffer was set on a low table to do a quick polish, so was not mounted or clamped. A buff was installed on the right spindle, no buff on the left. Friend was wearing a tight-fitting, long-sleeved sweater. While buffing on the right wheel, the left tapered spindle caught a thread on the friend's left sleeve and started grabbing more and more threads and sleeve.

Rather than pulling the arm into the machine, the light buffer quickly lifted off the table and started climbing up the underside of the friends arm. There was no way to get a hand of the on/off switch because the unit was spinning wildly and battering my friend like a club wielded by a mad man. Only when my friend could grab the gyrating power cord and yank it from the wall did the mayhem stop.

So when you're in the shop, please think safety. Don't take even those little motors for granted.

DO BEZELS SHRINK—The engineer in me says there's no reason a bezel should shrink when I solder it onto a base plate, but I sometimes find that the stone won't quite fit into the bezel that was perfect just before soldering.

If that ever happens to you, here's a fix that usually works for those times when there's just a minor problem. I file or sand the stone down a little around it's base. For soft cabs like turquoise, lapis, jet or howlite, you can use a sanding stick. Harder cabs like jasper or agates will require a diamond file. In a pinch, a ruby nail file from the drugstore will work.

There are two important things to remember when doing this. First, you can only make a minor adjustment to the stone's size. All filing or sanding has to be hidden by the bezel because it takes the polish off the stone. Secondly, remember to round off all sharp edges on the bottom of the stone. A sharp edge here might sit on a little extra solder that's in the bottom joint of your bezel. Just a little bump here can put enough stress the stone to risk breakage when you burnish the bezel down over the stone.



STRAIGHTENING WIRE—Have you ever pulled out some silver wire only to find that it's all bent up? The easiest way I've found to straighten it out is to stretch it a bit.

Simply put one end in the vise and grab the other end with a pair of serrated tip pliers. Then pull just enough to feel the wire stretch like a rubber band. This works best on smaller wire diameters, up to about 16ga.

Be careful if you are trying to pull hard on a thick wire. Brace yourself in case the wire breaks or pulls out of the pliers.

Please include the following attribution with each publication:

"Bench Tips for Jewelry Making" and "Broom Casting for Creative Jewelry" are available on Amazon
www.amazon.com/dp/0988285800/ and www.amazon.com/dp/0988285835

www.BradSmithJewelry.com



Check us out on the web: WWW.ETGMS.COM

THE EAST TEXAS GEM AND MINERAL SOCIETY

Purpose of the East Texas Gem & Mineral Society: Is to promote the study of geology, fossils and the lapidary arts. The public is always invited to attend all club meetings.

MONTHLY MEETING:

First Monday of the month unless a holiday, then the second Monday, at 6:45 p.m.

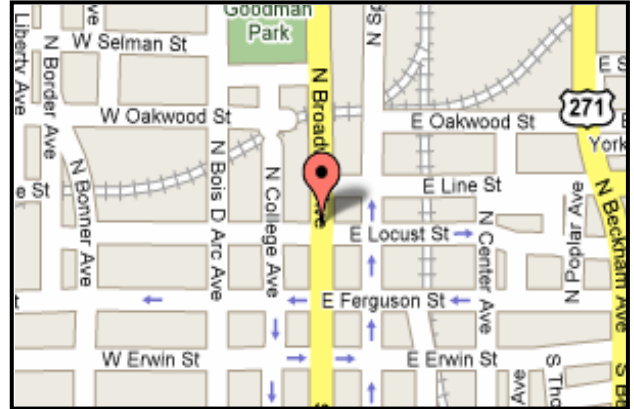
WHERE:

The Discovery Science Place
308 N. Broadway
Tyler, Texas

ANNUAL DUES:

- Adults: \$10.00
- Juniors: \$2.50 with adult membership
- Family: \$20

NOTE TO EDITORS: Feel free to use contents for non-profit newsletters. Give credit when and where due.



NEWSLETTER CONTENT: Please send any info or articles to be included in the newsletter to the Editor at the address or email listed below by the 15th of the month. Please, keep your address, phone and email information up-to-date, so that we can get the newsletter to you in a timely manner. Out-of-date information costs the club time and money in returned newsletters. If you need an issue dealt with quickly, don't hesitate to call, as that is the best way to reach me. Thank you... Susan Burch

CLUB OFFICERS:

PRESIDENT:
903-646-3189

Kinney Polve
8665 CR 373 D
Henderson, TX 75654

SECRETARY:
903-567-4162

Carolyn Davis
1042 VZCR 4201
Canton, TX 75103

VICE PRESIDENT:
903-881-5108

Terry Roberts
12243 Cross Fence Trail
Tyler, TX 75706

**FIELD TRIP
CHAIRMAN:**
903-978-0268

Fred Mahaffey
1637 CR 1306
Rusk, TX 75785

TREASURER:

Trish Hamilton
P.O. Box 132532
Tyler, TX 75713

**SHOW
CHAIRMAN:**
903-795-3860

Keith Harmon
9116 US HWY 84 W
Rusk, TX 75785

CLUB ADDRESS:

East Texas Gem & Mineral Society
P. O. BOX 132532
Tyler, TX 75713-2532

SEND DUES TO:

Trish Hamilton
P.O. Box 132532
Tyler, TX 75713



EDITOR: Susan Burch
20427 US. Hwy 69 S.
Alto, TX 75925

E-Mail: rocknroseedi-
tor@hotmail.com