



ROCK~N~ROSE



NEWSLETTER OF THE EAST TEXAS GEM & MINERAL SOCIETY

PAGE 1

VOLUME 42

TYLER, TEXAS

ISSUE 8

JULY 2016



2016 Coming Shows

August 13-14 2016
Baton Rouge, LA
Baton Rouge GMS
Marriot Hotel

August 20-21, 2016
Bossier City, LA
Ark-La-Tex G&MS
Bossier City Civic Center

August 27-28, 2016
Gem & Mineral Show
Jasper, TX
Pine Country
G&MS Events Center

INSIDE THIS ISSUE

2. July Meeting Minutes
3. Collecting Rock in East Texas
4. Lake Nacogdoches Field Trip
5. Lapidary/Jewelry Group
6. Cab of the Month/Poem
7. Bench Tips
8. Officers and Directions

MESSAGE FROM THE PRESIDENT

Seems like another month just flew right by. I've been busy making cabochons and getting ready for the field trip to Missouri this month. Along with putting together a compact workbench that will give me a place to work on cabs when we travel this fall. I also felt the need to go hunt for lapidary rough, and there's only one good location in East Texas to find a big variety. You probably guessed it, I took a collecting trip to Keith Harmon's rock pile.

Those of you that missed the July meeting missed a very informative program on Indians and arrowheads, given by Gene Goar. The August program will be given by Terry Robert, on his recent field trip to Northwestern Utah, near Wendover, Nevada, where he collected some nice agate. We don't have a program yet for September, so if you would like to give the September program contact me.

Fred Mahaffey has put a lot of work into this month's field trip, or field trips, however you may want to do it. Some of us are going to make a full week of it, collecting rock in Missouri. We all should end up with a lot of nice material after a week of collecting.

Coming up October 3rd is our annual club auction that we have in lieu of our monthly meeting program. I know that it's still a couple of months away, but I figured I would mention it so members could gather up things that they might want to donate, to be auctioned off. Also in October will be Keith Harmon's yearly rock sale. We will be having a rock critter workshop in October again this year. This is an excellent activity for all of our junior members to attend.

Another reminder that elections are coming up in September for new officers. Anyone interested in taking a more active role in the club and serving in one of these offices, please contact me or one of the other board members. We definitely need someone to fill the office of the secretary.

Once again I want to remind everyone, temperatures are bumping the 100 degree mark, and you can dehydrate before you know it. Know the signs. When you're planning your trip in the field, bring plenty of water and then some. Make sure you stay hydrated. I don't want to hear about any of my friends getting heat stroke this summer. Be Safe. Kinney Polve





JULY MEETING MINUTES

President, Kinney Polve, called the meeting to order on July 11, 2016, at 6:45 p.m.

Visitors and new members were asked to introduce themselves. John Morrison is a new member.

Two silent auction items were on display and door prize tickets were available.

Minutes from the last meeting were approved as printed in the newsletter. Becky Whisenant made the motion and Gene Goar seconded it.

Trish Hamilton, treasurer, gave the treasurer's report.

Lapidary Arts Group: This was one of the unusual months when the group meets before the club meeting. A small group examined cabs, worked on cabs and drilled a hole in a stone.

Mineral and Fossil Groups: No report was available

Field Trip: Fred Mahaffey had some specimens for viewing from the trip to Nacogdoches. The July trip will begin on Saturday the 23rd at Cuba, Missouri. A guide will lead the trip for the day. For those wanting to stay, the hunt will continue on Monday. The following Friday a hunt is planned in Lincoln, Missouri for mozarkite. Make sure Fred has your contact information if you want to attend this field trip. He will keep you updated on last minute information.

Newsletter: Keep writing articles, creating poetry and taking photos to send to Susan Burch, newsletter editor.

Social Media: Send the above mentioned items to Lynn Metcalf for the web page and to Kinney Polve for Facebook.

Announcements:

- Kinney thanked those who bring food for refreshment time.
- A thank you note was received from the Discovery Science Center for our contribution to their upkeep and improvement of the cave exhibit. It also told of an upcoming auction to benefit the museum. They would appreciate the contribution of items for this event.
- Kinney reminded all to help clean up at the end of the meeting.
- September will be election of officers. A volunteer is needed to fill the office of secretary. Tell Kinney if you will agree to serve the club in this role.
- The October meeting will be the beginning of the new year for officers and it will also be the annual auction. Kinney asked Penny Hawkins and Becky Whisenant place some free advertisements about the annual auction. This is the second biggest addition to our treasury so the more people attending will be a great benefit.
- Keith Harmon's backyard sale will be the first weekend in October.
- The American Federation meeting is the last weekend in July. They have a number of field trips you can attend.
- It was good to have Judith Bursleson in attendance after recovery from illness. Keep up the good work Judith.

Old Business: The search for a workshop is continuing. Everyone can assist with this by keeping your eyes open for suitable property.

New Business: A motion was made to contribute four tickets to the 2017 January Gem Show to the Discovery Science Center for their auction. Trish Hamilton made the motion and Carolyn Davis made the second.

A motion to adjourn was made by Terry Roberts and seconded by Gene Goar.

All enjoyed refreshments and visiting. Door prize numbers were drawn.

Gene Goar gave the program for the evening. He has been collecting and learning about Indians since the age of twelve. His expansive collection was like a museum.

Our next meeting will be August 1st.

Respectfully submitted, Carolyn Davis





COLLECTING ROCK IN EAST TEXAS BY KINNEY POLVE

Living in the piney woods area of east Texas doesn't afford us with a lot of prime rock collecting sites. And when I start feeling the need to get out and find some new lapidary material, I sometimes don't have days or weeks to spend on a rockhounding field trip. That's when I make arrangements to travel to my favorite collecting area, and it's only about an hour drive. This was one of those months that I felt the need to find some new material to work with.

Most members know about Keith Harmon and his rock sale he has once a year. But not so many know that they can make arrangements with Keith to come out and collect just about any time of the year. With tons of material that Keith has acquired over the years, the variety is far better than any rock shop that I've been to. And if you're willing to do a little digging through all the piles, buckets and milk crates, you'll always find those unexpected pieces of rough. There is just about any type of lapidary material you could imagine. Don't forget to ask Keith if you can't find that special type of material, he's probably stashed it away somewhere. The only thing that could make collecting here any better would be air conditioning, but you can't have everything.

Well I made arrangements to get there early, so I could do my collecting before it got too hot. When the temperature starts out near 80 degrees, I don't plan to be out in the sun for too long. And it wasn't long before Vicky and I had a 5 gallon bucket full of slabs and rough. And the price was excellent too. It always amazes me that each time we go, we always seem to find some excellent material that we didn't find the last time we were there. But I guess I shouldn't be surprised, when there are tons of material to choose from. So if you're looking for a quick field trip to fit into your busy schedule that won't break the bank, give Keith a call.





JUNE 2016 FIELD TRIP TO LAKE NACOGDOCHES BY FRED MAHAFFEY

We started out early on a beautiful Saturday East Texas morning and arrived at Lake Nacogdoches around 8:30. As we made the short hike around the lake through the woods we found the Weches Formation (Eocene) in East Texas, in the green sand deposits along the shore of Lake Nacogdoches. With most of the fossils being light colored to white they stood out in the green sand of the exposed bank and in the shallows. Horn coral was very abundant and as we walked the shoreline other numerous fossils were found in the bank. Most were micro fossils many only 5 to 10 millimeters. However, you will see I found a particularly large specimen in the water which I was able to cut out of the hard green sand without damaging it. Watching the waves roll in on the shoreline many fossils were found in the sand. Referencing the book, "A Field Guide to Fossils of Texas" by Charles Finsley. I have managed to identify a few of the finds.



Horn Coral



Coral, Archohelia

Pictured below: 1. Un-identified; 2. Mesalia alabamensis, Paleocene epoch; 3. Left? Center: Pseudolvina vestusta, Eocene Epoch. Right: Coral, Archohelia; 4. Club members, Darby Spears and Julia Toombs on the hunt; 5. Left: ? Center: Protosurcula gabbii, Paleocene epoch. Top right: Mesalia alabamensis, Paleocene epoch. Lower right: falsifusus ludovicianus, Eocene epoch; 6. Lake Nacogdoches shoreline.





JULY MEETING OF THE LAPIDARY/JEWELRY GROUP

On Saturday, July 9, eight members of the Lapidary/Jewelry group met at Kinney Polve's shop for the July meeting. Two of the members brought some of their unfinished cabs for review and suggestions for improving the cabs for the final polish. Terry Roberts brought several completed cabs for the group to look at, as well as an example of some lab-grown pure Silicon. The elemental form of Silicon is never found in nature, so this was an educational experience. The example was provided to Terry for polishing one side by John Morrison, a new club member.

Several of the club members asked for information on acquiring capping machines and rock/trim saws, along with pads and polishes. Kinney showed them examples of equipment that he has purchased over the years and showed where to find polishes and pads to get a brilliant shine on various types of minerals. After a thorough round-table discussion of capping techniques and personal experiences, Kinney provided tubs of slabs for the members to go through to find some material for future work at home. The meeting adjourned at 5:00 p.m. and everyone left with some new material to work on. The next meeting of the L/J Group will be at 2:00 p.m. on Saturday, Aug. 13, at the home of Terry Roberts.



After a thorough round-table discussion of capping techniques and personal experiences, Kinney provided tubs of slabs for the members to go through to find some material for future work at home. The meeting adjourned at 5:00 p.m. and everyone left with some new material to work on. The next meeting of the L/J Group will be at 2:00 p.m. on Saturday, Aug. 13, at the home of Terry Roberts.



Above are pictured five cabs completed by Terry Roberts. The material was collected near Wendover, UT in May. One problem that Terry faced in trying to cab this material is that it is full of cracks. He was able to seal them with very thin super glue, but it didn't prevent the cracks from showing up in the photos of some of the cabs. Also, much of the material is riddled with small cavities that you may not see until after you have formed and polished the cab. Even with all these problems, he was able to complete some nice cabs for display. Although the agate in the area is called plume agate, He believes it more closely resembles flame agate.

The top left picture shows three of the five cabs. The middle picture shows a close-up view of Terry's wife's favorite cab. He has turned it sideways so you can let your imagination play with the "scene" in the cab. Terry thinks it shows a forest fire in the foreground with fire in the tops of the trees, while in the background is another fire.

The far right picture shows the more typical flame agate composition found in the slabs. The cab is smaller due to the cracks in the slab he cut it from. The bottom left picture shows a tumble-polished heel from one of the rocks he slabbed. It has a nice pattern of red and yellow flames in the agate. Altogether, he was pleased with what he was able to find in the Silver Island Mountains in Utah and definitely plans on going back on his next visit to family in Salt Lake City. He feels he might be more successful next time in locating better quality material since he will be able to spend more time at the site.

He plans to cab some of the agate slabs with white inclusions that more closely resemble some of the material collected on the Singleton Ranch.

Information and photos contributed by Terry Roberts.



Cab of the Month

My selection for cab of the month is an agate collected from Needle Peak located between Terlingua, TX and Big Bend National Park. This area is well known for its beautiful bright yellow pom pom inclusions which are usually sprays of radiating Aragonite crystals. While this feature is lacking in this cab, it does have some beautiful druzy quartz crystals inside small pockets exposed on the surface of the cab which qualifies it for cab of the month. Terry Roberts



UPDATE FROM THE SCFMS AND EDITOR'S NOTE

The deadline for entries of items published in 2016 in the 2017 Author's and Editor's contest is January 6, 2017. This is earlier than usual, so please send in items for our newsletter as soon as possible. Your contributions make the newsletter as great as it is. If you have a favorite article you or someone else has contributed, please let me know. SB



A TREE OR NOT A TREE By Mary Owens

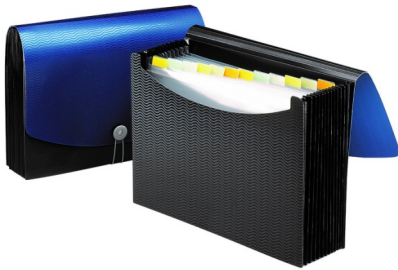
**When's a tree not a tree?
You may say, "That can't be."
I say, that I did see
A tree is not a tree.
It did look like a tree.
A tree it used to be.
Now, it's a rock, you see,
Called a petrified tree.**



Poem via SCFMS July-August newsletter. Photos of petrified wood/trees, chosen from the Internet and via SCFMS July/August newsletter.



BENCH TIPS BY BRAD SMITH



SHEET & WIRE STORAGE—The more you work with jewelry, the more problems you have finding the piece of metal you need. My pieces of sheet were generally stored in various plastic bags, and the wire was in separate coils. Few were marked, so it often took me a while to locate that piece of 26 ga fine sheet I bought last year, especially since I usually take my supplies back and forth to classes.

A tip from a friend helped me organize everything. I bought an expanding file folder from the office supplies store (the kind that has 13 slots and a folding cover) and marked the tabs for each gauge of metal I use. Then I marked all my pieces of sheet with their gauge, put them in plastic bags, marked the gauge on the bag, and popped them into the folder. I usually store coils of wire loose in the folder, but they can also be bagged if you prefer. I use one tab for bezel wire and one for the odd, miscellaneous items.

The resulting folder is really convenient when I want to take my metal out to a class or workshop, and it's colorful enough for me to easily find in the clutter of the shop !

LITTLE BALLS—I often use little balls of silver and gold as accent pieces on my designs. They can be made as needed from pieces of scrap. Cut the scrap into little pieces, put them on a solder pad and melt them with a torch. Then throw the balls into a small cup of pickle.

If you need to make all the balls the same size, you need the same amount of metal to melt each time. The best way to do that is to clip equal lengths of wire.

But there's an easier way to get a good supply of balls. Some casting grain comes in near perfect ball form. Just grab your tweezers and pick out the ones you need. When you need larger quantities of balls, pour the casting grain out onto a baking pan, tilt the pan a bit, and let all the round pieces roll to the bottom. Bag the good ones, and pour the rest back into your bag for casting. Balls can be sorted into different sizes using multiple screens.

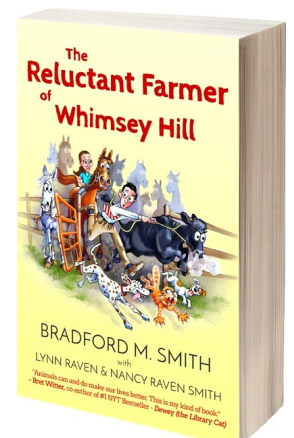
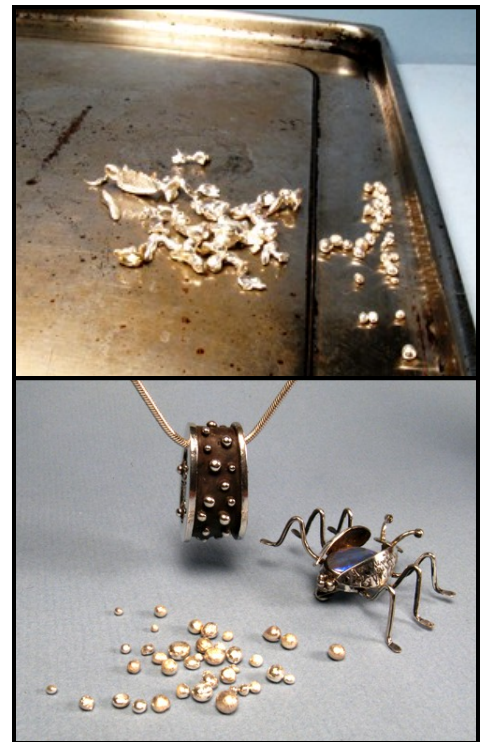
Please include the following attribution with each publication:

"Bench Tips for Jewelry Making" and "Broom Casting for Creative Jewelry" are available on Amazon

www.amazon.com/dp/0988285800/ and www.amazon.com/dp/0988285835

www.BradSmithJewelry.com

And as a personal note, I'm excited to tell you about my family memoir. "The Reluctant Farmer of Whimsey Hill" is the true, light-hearted love story about a city boy (me) moving to a farm where dealing with my new wife's crazy rescue animals almost did me in. If you enjoy a good pet story like "Marley and Me" or "All Creatures Great and Small", take a look at the sample chapters on Amazon. <http://amzn.to/1XoblsP>





Check us out on the web: WWW.ETGMS.COM

THE EAST TEXAS GEM AND MINERAL SOCIETY

Purpose of the East Texas Gem & Mineral Society: Is to promote the study of geology, fossils and the lapidary arts. The public is always invited to attend all club meetings.

MONTHLY MEETING:

First Monday of the month unless a holiday, then the second Monday, at 6:45 p.m.

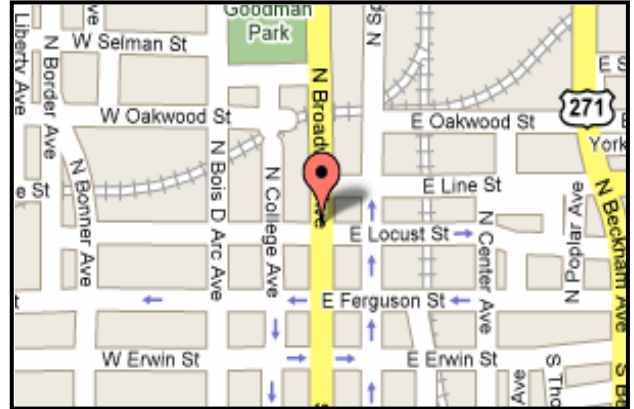
WHERE:

The Discovery Science Place
308 N. Broadway
Tyler, Texas

ANNUAL DUES:

- Adults: \$10.00
- Juniors: \$2.50 with adult membership
- Family: \$20

NOTE TO EDITORS: Feel free to use contents for non-profit newsletters. Give credit when and where due.



NEWSLETTER CONTENT: Please send any info or articles to be included in the newsletter to the Editor at the address or email listed below by the 15th of the month. Please, keep your address, phone and email information up-to-date, so that we can get the newsletter to you in a timely manner. Out-of-date information costs the club time and money in returned newsletters. If you need an issue dealt with quickly, don't hesitate to call, as that is the best way to reach me. Thank you... Susan Burch

CLUB OFFICERS:

PRESIDENT:
903-646-3189

Kinney Polve
8665 CR 373 D
Henderson, TX 75654

SECRETARY:
903-567-4162

Carolyn Davis
1042 VZCR 4201
Canton, TX 75103

VICE PRESIDENT:
903-881-5108

Terry Roberts
12243 Cross Fence Trail
Tyler, TX 75706

**FIELD TRIP
CHAIRMAN:**
903-978-0268

Fred Mahaffey
1637 CR 1306
Rusk, TX 75785

TREASURER:

Trish Hamilton
P.O. Box 132532
Tyler, TX 75713

**SHOW
CHAIRMAN:**
903-795-3860

Keith Harmon
9116 US HWY 84 W
Rusk, TX 75785

CLUB ADDRESS:

East Texas Gem & Mineral Society
P. O. BOX 132532
Tyler, TX 75713-2532

SEND DUES TO:

Trish Hamilton
P.O. Box 132532
Tyler, TX 75713



EDITOR: Susan Burch
20427 US. Hwy 69 S.
Alto, TX 75925

E-Mail: rocknroseeditor@hotmail.com
Phone: 936-615-5397