

Put poison in the water & say
it's good for teeth?



Now why didn't I think of that?

Fluoride Causes Death and Disease

Bega Valley

June 2016

Geoff Pain

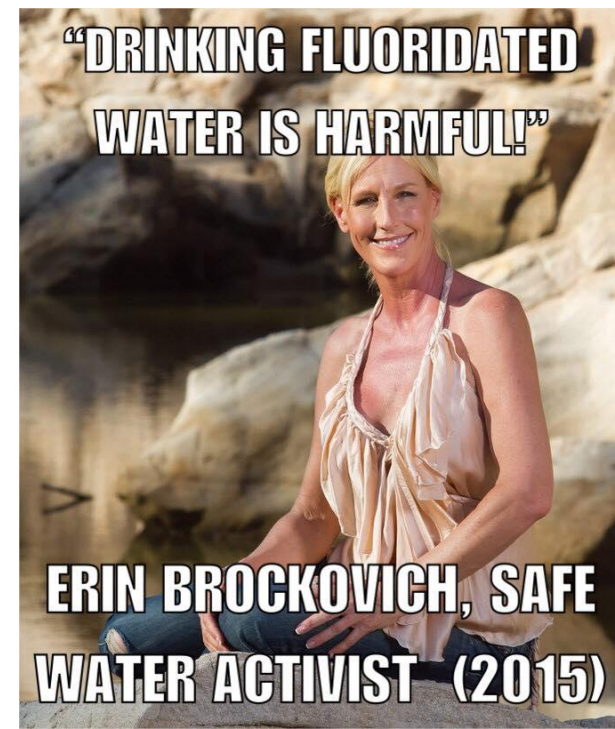


Good News

Celebs

Join

campaign



Examples of Australian Dentists Opposing Fluoridation

- Dr Maria Claudianos
- Dr Michael Chong
- Dr Andrew Harms
- Dr Aushi Patel
- Dr Karim Azmi
- Dr Anshu Singh
- Dr Anu Reddy
- Dr David Cowhig
- Dr Duncan Copp
- Dr Ross Mackay
- Dr Terry Rose
- Dr Terry Wong
- Dr Elizabeth Rowland
- Dr Eric Davis
- Dr Gavin Blyth
- Dr Joe Juric
- Dr Leigh Woodbridge
- Dr Lisa Matriste
- Dr Michelle Ever Juan
- Dr Phillip Stein
- Dr Prue King
- Dr Rachel Hall
- Dr Urvashi Pandi
- Dr David Stern

Informed Dentists say

~~NO~~

to **FLUORIDATION**

 Fluoride Free NZ www.FANNZ.org.nz



Dr Lewis Blair
DDS (Dentist)



Dr John Jones
DDS (Dentist)



Dr Russell
Macdonald
DDS (Dentist)

THE PERIODIC TABLE FOR BIOLOGISTS

I	II
1 H hydrogen	
2 Li	4 Be
3 Na sodium	12 Mg magnesium
4 K potassium	20 Ca calcium
5 Rb	38 Sr
6 Cs	56 Ba
7 Fr	74 Ra

The most commonly occurring elements in living organisms are:

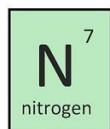
C ⁶ carbon	H ¹ hydrogen	O ⁸ oxygen	N ⁷ nitrogen
---------------------------------	-----------------------------------	---------------------------------	-----------------------------------

Other common elements are shaded in green.

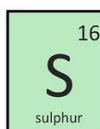
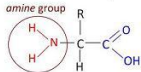
transition-metals									
21 Sc	22 Ti	23 V	24 Cr	25 Mn manganese	26 Fe iron	27 Co cobalt	28 Ni nickel	29 Cu copper	30 Zn zinc
39 Y	40 Zr	41 Nb	42 Mo	43 Tc	44 Ru	45 Rh	46 Pd	47 Ag	48 Cd
57 La	58 Hf	59 Ta	60 W	61 Re	62 Os	63 Ir	64 Pt	65 Au	66 Hg
75 Ac	76 Ku	77 Ha							

III	IV	V	VI	VII	VIII
non-metals					2 He
5 B	6 C carbon	7 N nitrogen	8 O oxygen	9 F	10 Ne
13 Al	14 Si	15 P phosphorous	16 S sulphur	17 Cl chlorine	18 Ar
31 Ga	32 Ge	33 As	34 Se	35 Br	36 Kr
49 In	50 Sn	51 Sb	52 Te	53 I iodine	54 Xe
67 Tl	68 Pb	69 Bi	70 Po	71 At	72 Rn

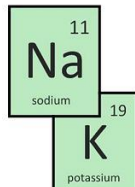
Some elements are used universally in nature—though their uses can be diverse.



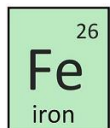
- Amine group of amino acids (the monomers of proteins)
- Also used in chlorophyll.



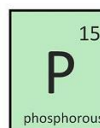
- Source of energy for chemosynthetic bacteria in hydrothermal vents
- Found in the R-Group of cysteine, an amino acid, and can form disulfide bridges in protein folding.



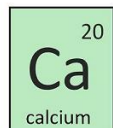
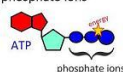
- Generate resting and action potentials in neurons.
- Used in maintaining osmosis. Sodium is the main cation (positive ion) in blood plasma, potassium in cytoplasm.
- Sodium-potassium pump is an example of active transport



- Has a high affinity for oxygen
- Used in hemoglobin and myoglobin to carry oxygen in blood and muscles
- Used in ferredoxin in photosynthesis
- electron carrier in some bacteria



- Phospholipids make up the plasma membrane.
- Sugar-phosphate backbone of DNA structure.
- Bonds between phosphate ions store energy in ATP.

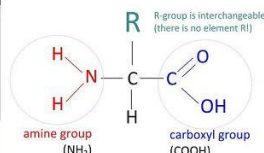


- Extracellular component of bone matrix
- Forms exoskeletons
- Stimulates synaptic transmission between neurons
- Used in muscle contraction

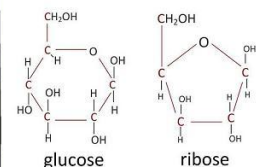
Organic Compounds

contain **carbon** and are found in **living organisms**.

Some examples include:

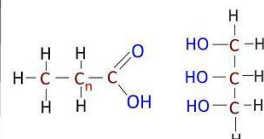


amino acids



glucose

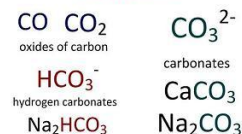
ribose



fatty acid

glycerol

Some exceptions are:



Resources used:

- Kent, M. Advanced Biology. Oxford University Press, 2000.
- Allott, A & Mindorf, D. Biology Course Companion. Oxford University Press, 2007.

Designed for the IB Biology course by Stephen Taylor, Bandung International School, Indonesia. June 2009.

For more resources or to leave a comment, visit:
<http://sciencevideos.wordpress.com>

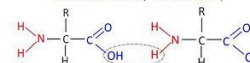
This resource has been prepared for FREE USE by science teachers and students. It may be printed freely but must not be sold or used for profit. If you use this resource in your own work, please cite it appropriately.

Condensation reactions create bonds between organic molecules, making **polymers**.

Hydrolysis reactions break bonds.

example:

amino acids (monomers)

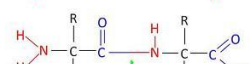


hydrolysis

hydrolase used
water in

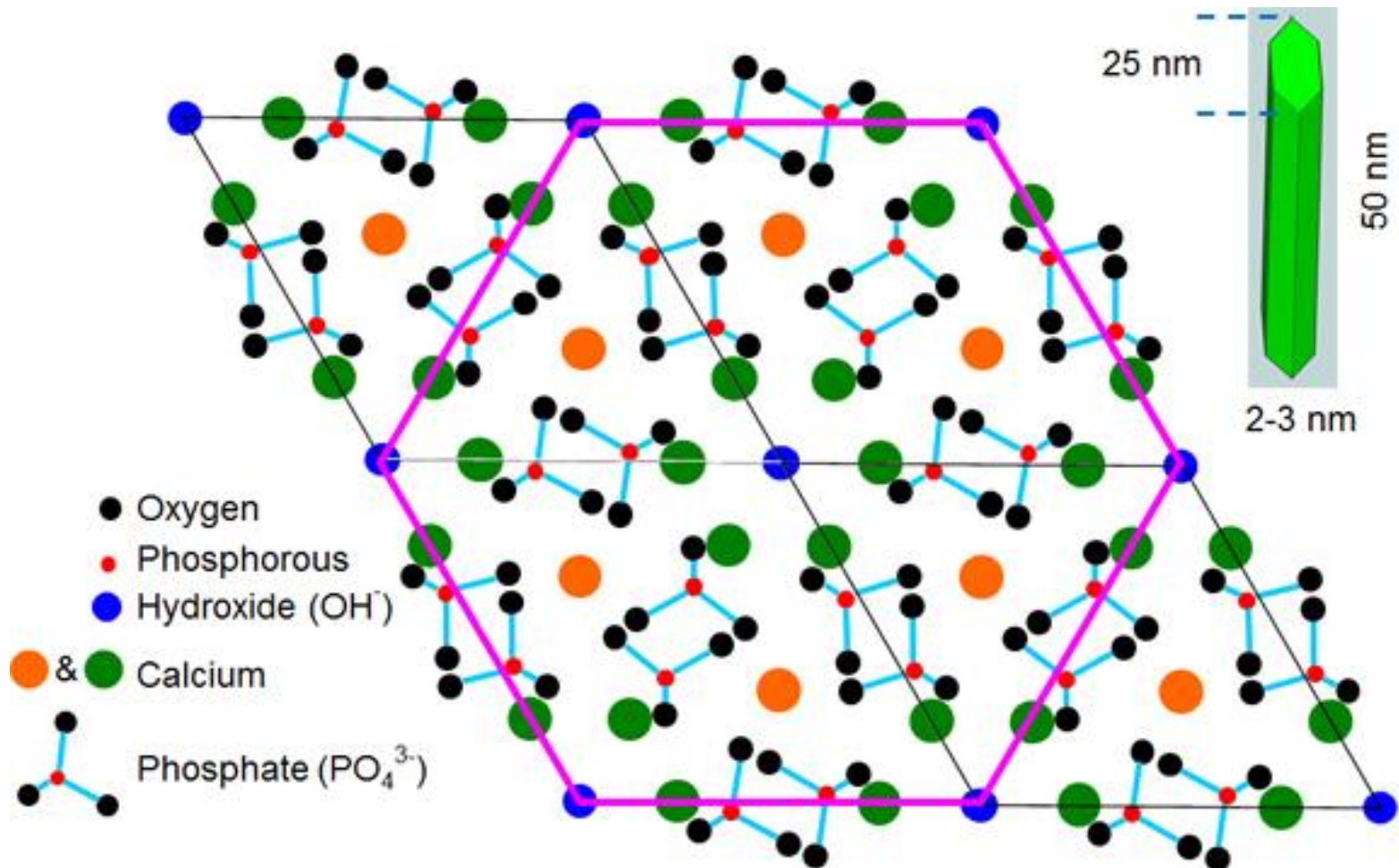
condensation

polymerase used
water out



dipeptide (polymer)

What is all the **FUSS** about? Hydroxyapatite Fluoride in Unwanted Substitution Sites



Something the NHMRC
doesn't want members of
the public to see - FUSS

Positron Emission Tomography using
radioactive Fluorine in **healthy**
volunteers.

The **dark areas are Fluoride** ions
attached to organs, **arteries** and
bone shortly after injection.

Note the **bladder** as the body fights
to eliminate Fluoride, the base of the
brain, joints, kidneys

Ref: Association of vascular fluoride uptake with vascular calcification and
coronary artery disease Li et al 2012 Nuclear Medicine Communications
2012, 33:14–20



Whole-body positron emission tomography image demonstrates
remarkable fluoride uptake in both femoral arteries.



Patient with RCC and bone metastases who was imaged using routine ^{99m}Tc -MDP bone scintigraphy (left) and ^{18}NaF PET-CT (right). Image courtesy of Emma Gerety.

But
Mum, what
is
FLUORIDE

Oh that's just a toxic product of
the ALUMINIUM and CHEMICAL FERTILIZER
INDUSTRY. It's one of the main ingredients in
toothpast, gels, rinses, pesticides, rodenticides,
CFC's, fungicides, nematocides, anesthetics,
tranquilizers, FLUORIDATED medicines, treated
water, NERVE GAS... why?





FLUOSILICIC ACID
WASTE TANK

FLUOROSILICIC
ACID

UN 1778

PROCHEM

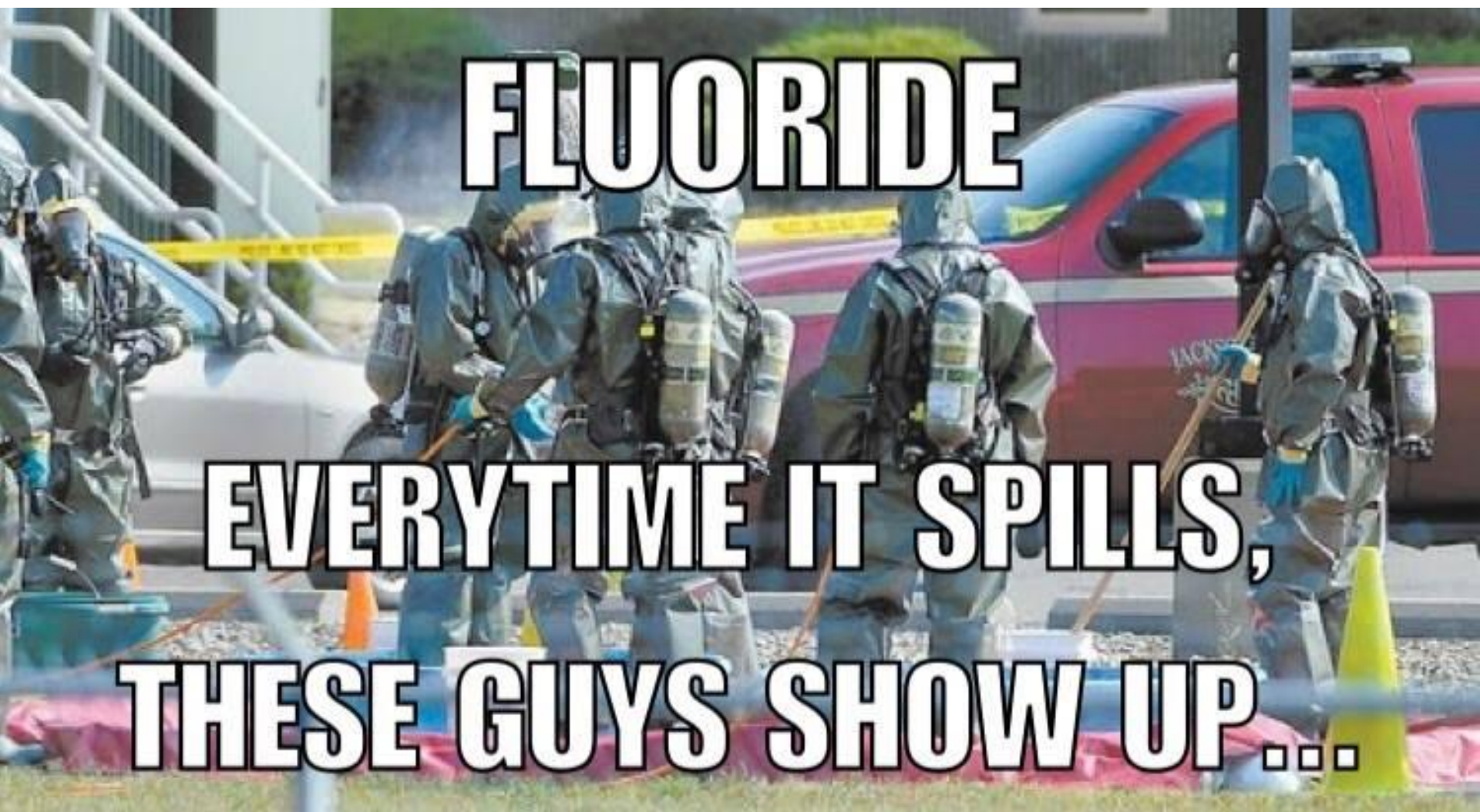
2X

IN EMERGENCY CALL
000, POLICE OR
FIRE BRIGADE



SPECIALIST ADVICE





FLUORIDE

EVERYTIME IT SPILLS,

THESE GUYS SHOW UP...



Hazmat incident in Maffra 17/09/2010

FLUORIDE

PUTTING THE PIECES TOGETHER

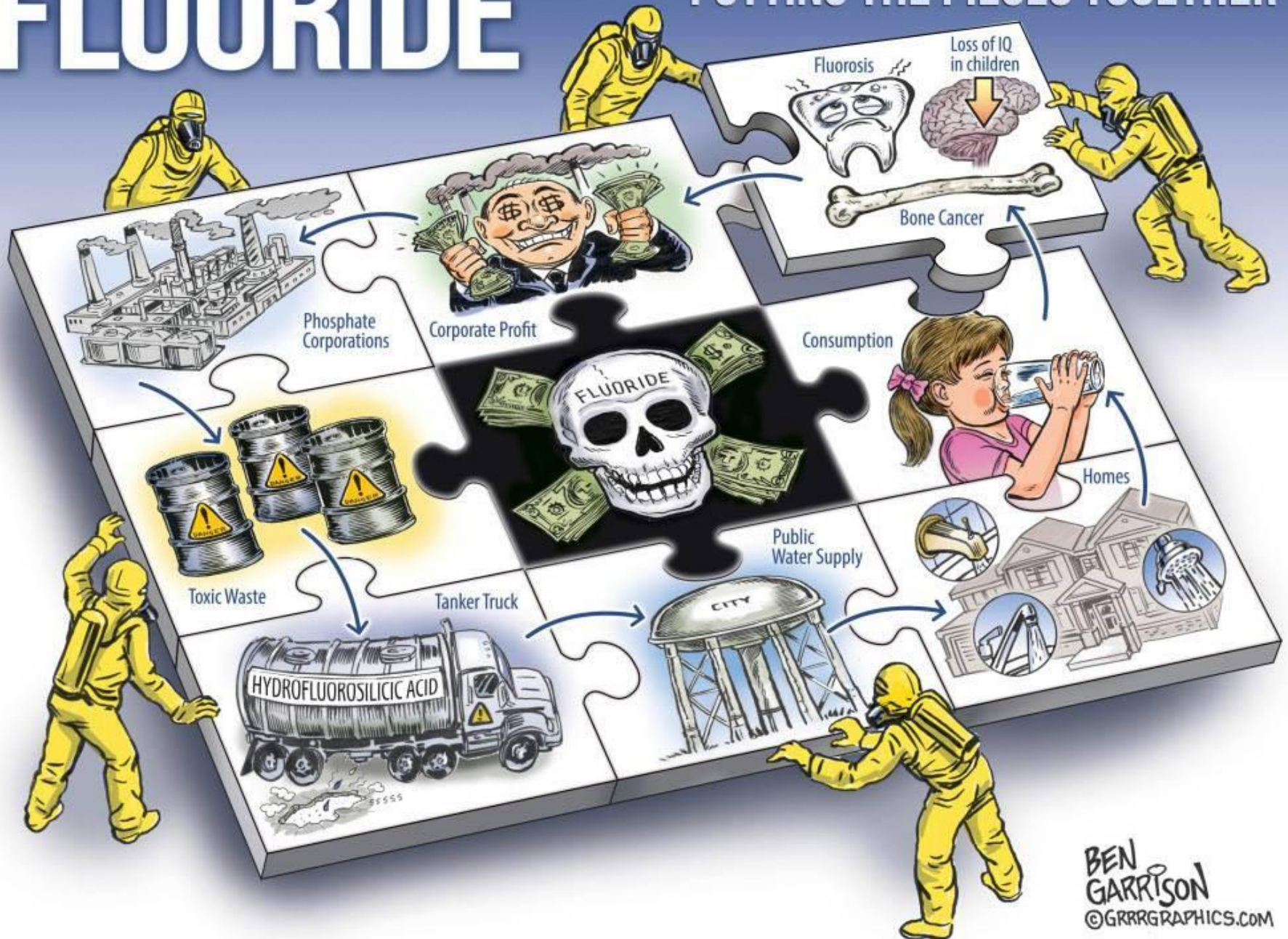


Image taken directly from training manual produced by Pew Trusts for **Fluoride Pushers** – lists Known **Harms** to be avoided in any debate

Takeaway: Frame the issue correctly



PEW
RESEARCH CENTER
CENTER ON THE STATES

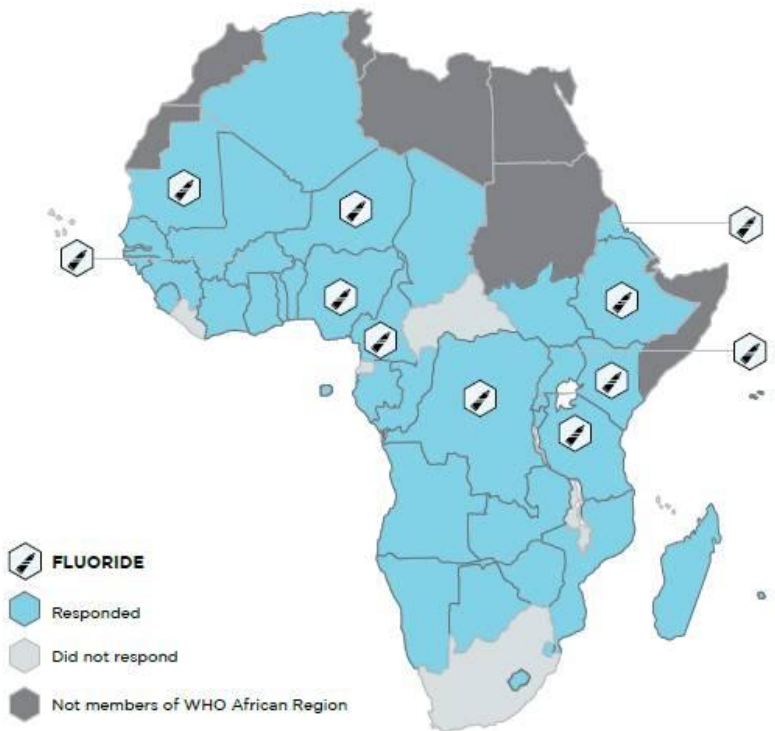
*Opponents
are likely to
win if the
dialogue is
trapped
inside this
message
wheel*



World Health Organization Officially Concerned about Fluoride

Countries worried

Figure 8: Fluoride as a public health concern in the WHO African Region



What they worry about

Clinical features and health impacts associated with fluoride

Clinical features

- High concentrations: Abdominal pain, excessive saliva, nausea and vomiting. Seizures and muscle spasms may also occur. Early symptoms of skeletal fluorosis include stiffness and joint pain. In severe cases, the bone structure may change and ligaments may calcify resulting in muscle impairment and pain.
- Low concentrations: Dental caries.

Health impacts

- High concentrations: Neurological damage. Reduced IQ scores in children. Dental and skeletal fluorosis. Associated with osteosclerosis, calcification of tendons and ligaments and bone deformities, tooth mottling.

World Health Organization List of Fluoride Harms

- Neurological damage
- Reduced IQ scores in children (see also Xiang 2003)
- Dental and skeletal fluorosis
- Osteosclerosis
- Calcification of tendons and ligaments
- Bone deformities
- Conjunctival hyperaemia (excess blood in the eye)
- Respiratory disorders
- Chronic cough
- Bronchitis
- Chronic Obstructive Pulmonary Disease
- Lung Cancer
- Haematological Disorders
- Ischaemic Heart disease
- Carcinoma of the Trachea
- Cerebrovascular Disease
- Digestive Disorders
- Skin Diseases (perhaps referring to Fluoroderma and eczema here)
- Rheumatic disorders
- Nervous conditions
- Hearing and Visual disorders
- Cognitive Decline in older people
- Exacerbation of Asthma
- Diabetes
- Obesity

World Health Organization 2014. Regional Assessment Report. **Chemicals of Public Health Concern** and their management in the African Region
Bergman, Åke, Heindel, Jerrold J, Jobling, Susan, Kidd, Karen A and Zoeller, R Thomas. Editors 2013 **State of the Science of Endocrine Disrupting Chemicals – 2012** An assessment of the state of the science of endocrine disruptors prepared by a group of experts for the United Nations Environment Programme and **World Health Organization**.
Geoff Pain https://www.researchgate.net/publication/285771633_Fluoride_is_a_bio-accumulative_endocrine_disrupting_neurotoxic_carcinogen_-_not_a_nutrient

NHMRC 2007 Report – Harms Mentioned

- **Dental Fluorosis***
- Cardiovascular disease ←
- **Cancer – Takahashi 2001***
- **Osteosarcoma (bone cancer males)***
- Thyroid Cancer ←
- Osteoporosis ←
- Decreased Bone Density←
- Fracture ←
- Down's syndrome ←
- **Alzheimer's disease***
- Anaemia during pregnancy
- Age at menarche
- **Congenital malformations***
- Infant mortality ←
- Sudden infant death ←
- **IQ ←**
- **Mental retardation (High Fluoride, Low Iodine)***
- Skeletal fluorosis ←
- **Goitre***
- **Urinary stone disease***

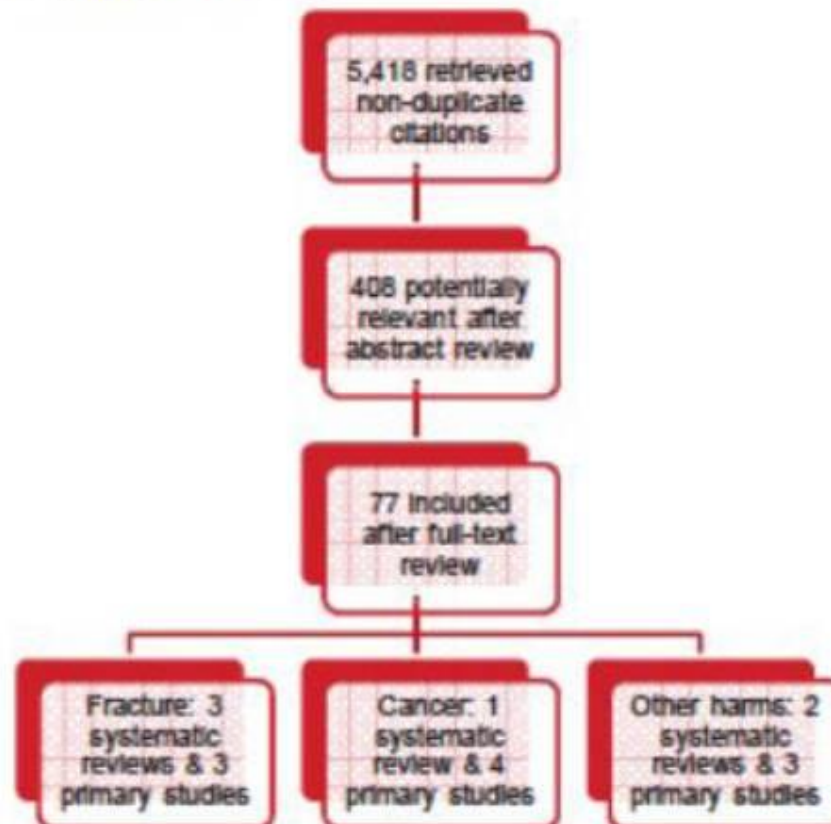
Note: Harms in bold * are for studies mentioned finding statistically significant increased prevalence

The Great Culling – 2007 NHMRC Review



Study selection

from the 2007 NHMRC Review



A survey of **suppression of public health information by Australian governments**

Boshra Yazahmeidi and C . D'Arcy J . Holman

School of Population Health, The University of Western Australia

Background: It is cause for concern when a **democratically elected government suppresses embarrassing information** by **hindering** public health research or the publication of research findings . We conducted a survey of Australian public health academics to **estimate the level of acts of suppression of research by Australian governments**, to characterise these events, and to gather views on what interventions might be effective in curbing them.

Methods : **A total of 302 academics in 17 institutions completed a postal questionnaire** in August 2006 (46 % of 652 invited). The instrument sought details of suppression events they had witnessed since 2001.

Results : There were **142 suppression events** , including 85 personally experienced by 21.2 % (n = 64) of respondents . The rates were higher in 2005/06 than in earlier years . **No State or Territory was immune** from suppression . Although governments most commonly **hindered** research by **sanitising , delaying or prohibiting** publications (66 % of events), no part of the research process was unaffected . Researchers commonly believed **their work was targeted because it drew attention to failings in health services** (48 %), the **health status of a vulnerable group** (26%), or pointed to a **harm in the environment** (11%). The government agency seeking to suppress the health information **mostly succeeded (87 %)** and , consequently , **the public was left uninformed or given a false impression** . Respondents identified a full range of participative, cognitive, structural and legislative control strategies .

Conclusion: The suppression of public health information is widely practised by Australian governments .

Implications : Systemic interventions are necessary to preserve the integrity of public health research conducted with government involvement.

Keywords : **Political censorship ; official corruption ; silencing dissension .**

(Aust N Z J Public Health. 2007 ;31 :5 51-7)

History - Why have different concentrations in different Australian States?

Minutes of the **1954 NHMRC** discussing **Fluoride Storage Toxicity Risk**

“Tea as a Dietary Source of Fluorine ... **Fluorine in teas from India and Ceylon** available in Queensland **2.5 mg/litre**. China teas **4.0 mg/litre**.”

“**cane-cutters** in Bundaberg consume as much as **10 litres per day** of which **4 litres is tea**”

“Assuming 0.5 ppm in the water and 2.5 ppm in the tea, the maximum fluorine intake could be **16.5 mg/day**”

(My note: About **1/20th Lethal** dose).

“..may be significant from the point of view of **production of fluorosis**”.

“Therefore the **Committee recommends that further research** be undertaken to collect information under conditions of high fluid turnover”

Fluorosis in children recognized in 1970 as a widespread problem in Western Australia

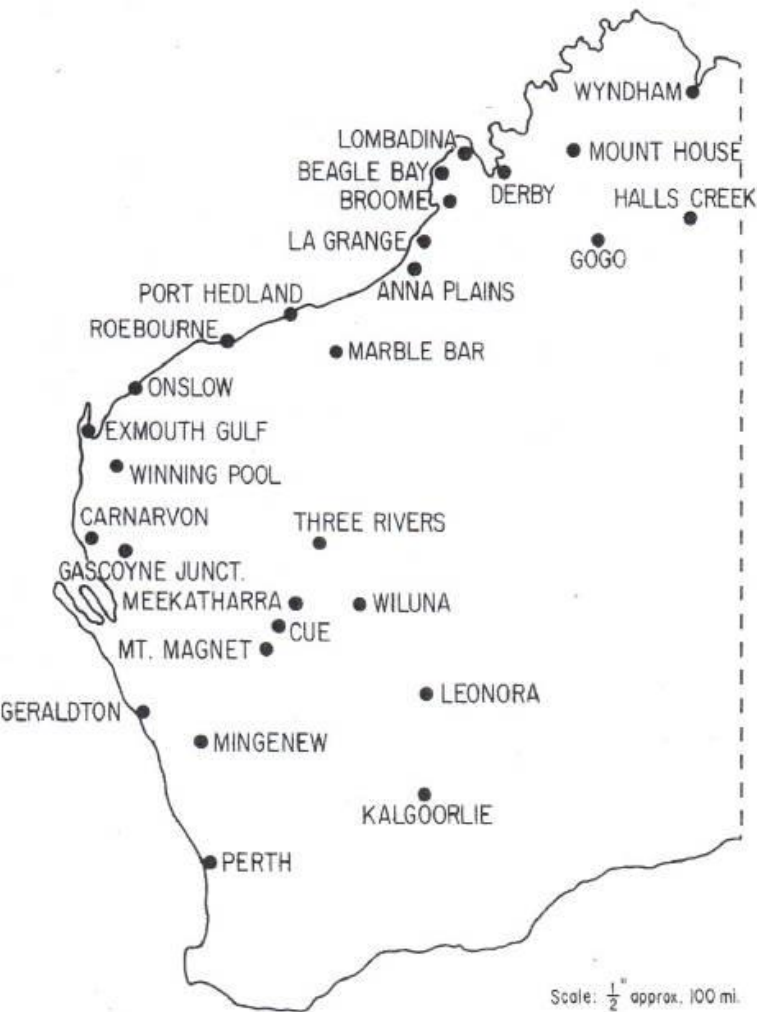


Fig. 1—Sites of towns and stations from whence came the full-blooded aboriginal and part-European children, the subject of this study.

Kailis, D.G and Silva, D.G. **1970**, Occurrence of Dental Fluorosis in Australian Aboriginal Children Resident in Carnarvon Western Australia. Australian Dental Journal 216-224

TABLE 2
Water sources, fluoride concentration in ppm, and climatological data (30-year cycle), including average daily temperatures, relative humidity, points, and days of rainfall of towns and stations shown in Fig. 1

Towns or stations	Water sources F. ion ppm	Average daily temperatures			Relative humidity	Points of rainfall (100 = 1 in.)	Days of rainfall (0.01 in.)
		Maximum	Minimum	Mean			
Wyndham*	0.2-0.5	93.1	75.8	84.5	51	—	—
Derby	0.3-0.4	92.2	71.3	81.7	59	2323	44
Halls Creek	0.1-0.9	92.2	64.0	78.1	45	2672	43
Lombadina	0.8-0.9	89.3†	70.2†	79.8†	65	2849	42†
Beagle Bay	(2.5) 0.1	89.3†	70.2†	79.8†	65	2869	49
Broome	0.1-0.4	89.3	70.2	79.8	63	2036	43
La Grange*	0.2	91.6	69.1	80.4	65†	1667	—
Anna Plains Stn.*	0.3	92.1	66.3	79.2	51	—	—
Gogo Stn.*	1.2	—	—	—	—	—	—
Port Hedland	0.1-0.8	89.1	67.6	78.9	55	1304	21
Winning Pool*	—	91.1	62.0	76.5	46	890	—
Marble Bar	0.1-1.0	96.2	67.6	81.9	39	1338	29
Roebourne	0.3-0.7	92.3	68.3	80.3	48	1292	22
Onslow	0.6-0.7	88.5	63.7	76.1	56	1079	22
Exmouth Gulf*	0.1-0.6	—	—	—	—	983	16
Carnarvon	0.4-2.3	80.2	62.7	71.5	64	862	38
Gascoyne Junction*	0.1	—	—	—	—	732	28
Three Rivers Stn.*	1.7	—	—	—	—	824	17
Wiluna*	—	84.0	51.2	70.6	42	980	—
Meekatharra	0.2-0.4	84.8	59.0	71.9	38	854	40
Cue	1.25	83.1	58.4	70.8	44	818	40
Leonora*	0.5	77.1†	52.4†	64.7†	43†	958†	—
Mt. Magnet*	0.2	—	—	—	—	833	45
Mingenew*	0.2	—	—	—	—	1630	68
Geraldton*	0.2	76.0	58.7	67.7	65	1801	82
Mount House Stn.*	1.0	—	—	—	—	2695	48

* Incomplete data.

† Approximate.

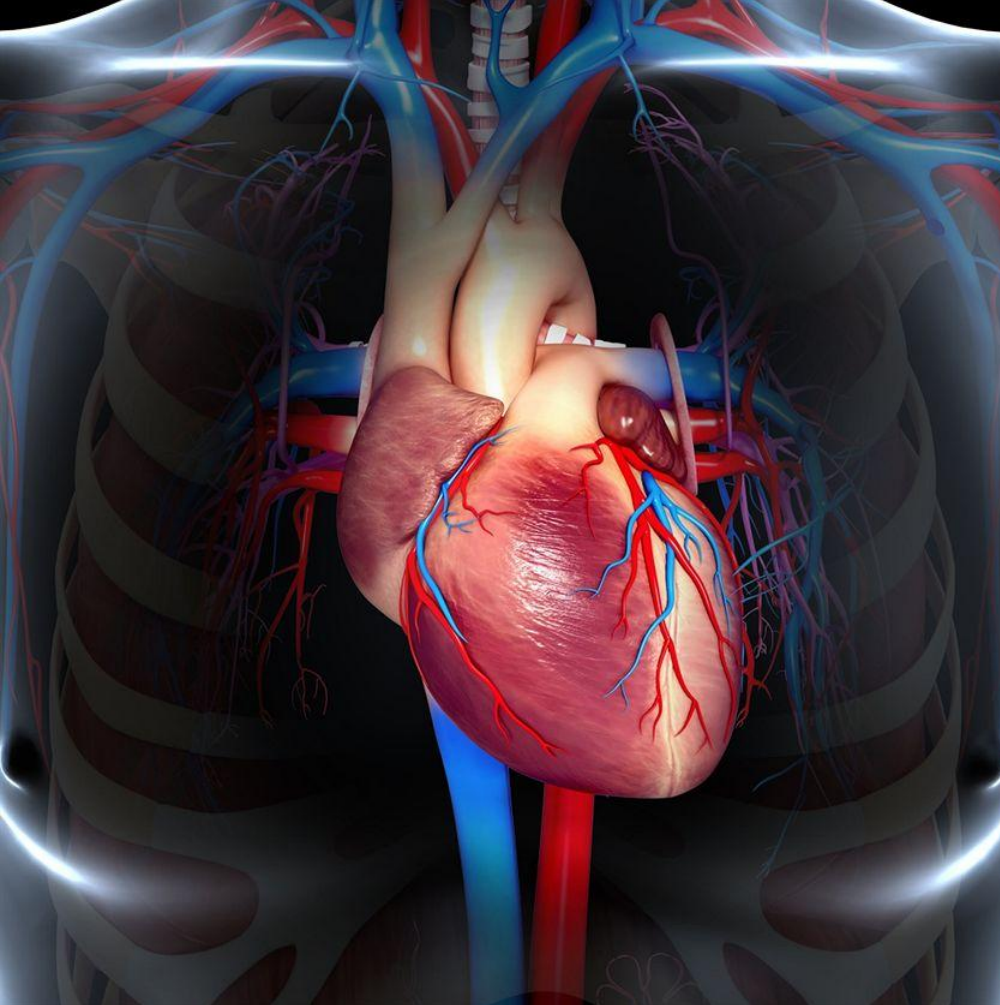
Western Australian taxpayers are billed for **Removal** of Fluoride at **Quindalup** which can reach 2.6 ppm

How Fluoride Kills

The Queensland Government [2015] summarizes the toxicity of Fluoride as follows:

“Acute fluoride poisoning is manifested by vomiting, diarrhoea, abdominal pain, cyanosis, severe weakness, dyspnoea (laboured breathing), muscle spasms, paresis and paralyses, cardiovascular disorders including ventricular fibrillation, convulsions, coma and death. Fluoride kills by blocking normal cellular metabolism.

Fluoride inhibits enzymes, particularly metallo-enzymes involved in essential processes, causing vital functions such as the initiation and transmission of nerve impulses to cease. The strong affinity of fluoride for calcium leads to hypocalcaemia”.



Fluoride causes Heart Attack, Stroke and Sudden Death

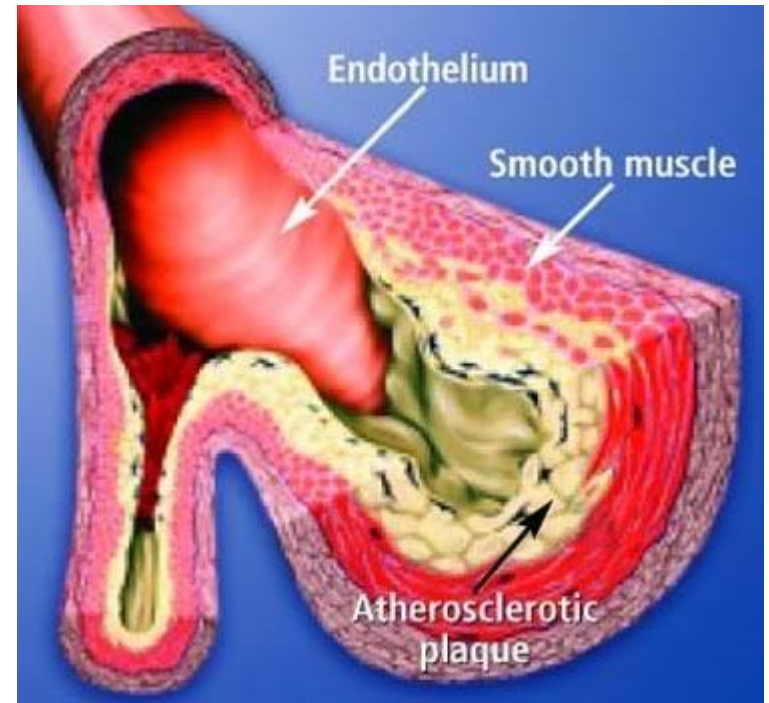
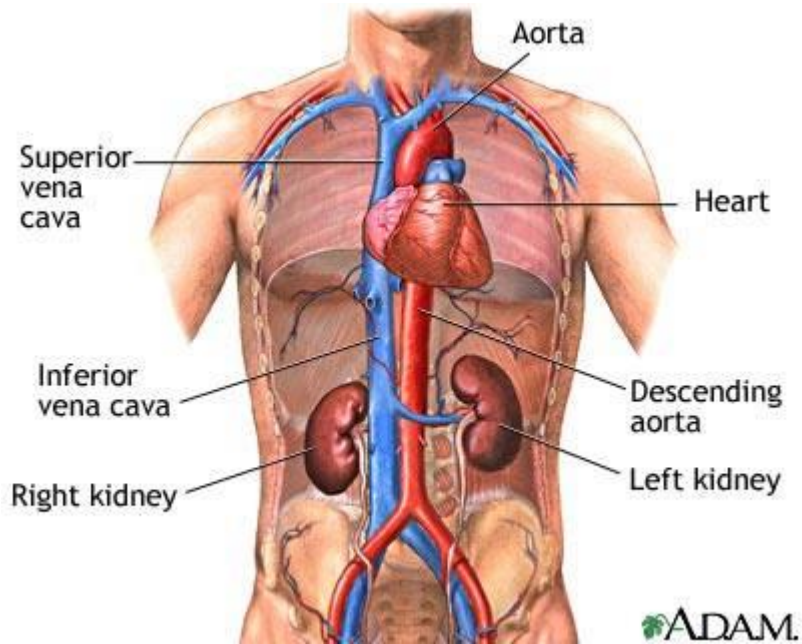


Every 12 minutes, an Australian dies from cardiovascular disease.

Fluoride continuously accumulates in the human body over a lifetime including the heart and arteries

See my review

https://www.researchgate.net/publication/293593658_Fluoride_causes_Heart_Disease_Stroke_and_Sudden_Death



Fluoride is an ACUTE Heart Poison and also a CHRONIC Heart Poison, a proven cause of Stroke and Ruptured Aorta. Fluoride is also a Kidney Poison.

Fluoride causes Heart Attack, Stroke and Ruptured Aorta

“Per capita cardiovascular **deaths** increased after **Grand Rapids, MI**, and **Newburgh, NY**, began industrial fluoridation (U.S. Public Health Service Congressional Record, Mar 24, 1952). 1,059 heart disease **deaths** occurred per year in 1948 in **Grand Rapids, MI** after 3 years of fluoridation but 585 yearly before fluoridation. The NY News, Jan 27, 1954 reported after 9 years of fluoridation in **Newburgh, NY** there were **882 heart deaths per 100,000** which was **74% above the National average.**” [Sauerheber 2013].

In **Grand Rapids** there was an **increase of 50%**, over a period of 4 years, in the **deaths from intra-cranial lesions (Stroke)** following the introduction of Fluoridation [Miller 1952]

Fluoride causes Heart Attack, Stroke and Ruptured Aorta

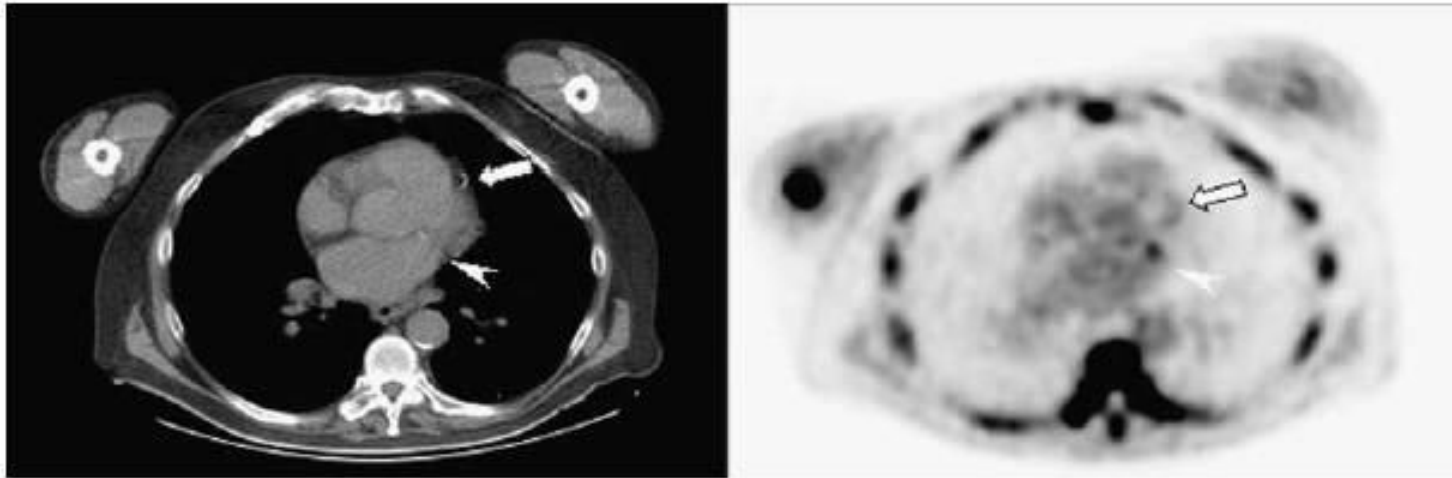
- Fluoride induces **ventricular fibrillation and cardiac arrest** [CSBP MSDS]
- Direct observation of damage to the heart caused by Fluoride includes vacuolar degeneration, haemorrhages, interstitial oedema, fibrous necrosis, dissolution of nuclei, thickening of the vessel walls and coronary artery ectasia (dilation)
- Sophisticated proteomics techniques have been applied to the study of the toxic mechanism of Fluoride on heart muscle [Lu 2009]. **Twenty-one** differentially expressed proteins were found, of which 15 were identified
- Fluoride impairs vascular tone and blood flow, increases recruitment and adhesion of circulating inflammatory cells to the endothelium, and prevents endothelial cell antithrombotic function
- Fluoride causes **Hypertension** (High Blood Pressure)
- Children with dental **Fluorosis** have altered ECGs, including **prolonged Q-T interval**, a biomarker for arrhythmias and a risk factor for **sudden death**
- Fluoride causes enhanced deposition of doped Hydroxyapatite “**Calcification**” which leads to inflammation sites for fatty deposits of atherosclerosis
- Fluoride increases cardiovascular hazards interleukin-6 and **Interleukin-8** (IL-8). As has been stated “there is sufficient evidence to support **beyond any doubt** the involvement of IL-8 in the establishment and preservation of the inflammatory micro-environment of the **insulted vascular wall**” [Apostolakis 2009].

Fluoride causes Heart Attack, Stroke and Ruptured Aorta

- Fluoride increases **fatty streak formation** of the aorta and other sites
- Fluoride increases Monocyte chemotactic protein-1 (MCP-1) which induces infiltration of macrophages at vessel walls and formation of **atherosclerotic lesions** [Namiki 202, Kusano 2004].
- Fluoride interferes with **heart muscle enzymes** and causes **cell death**
- Fluoride interferes with Magnesium and Calcium metabolism
- Fluoride causes **oxidative stress** and degeneration of heart muscle
- Fluoride inhibits **Thyroid** function with consequential damage to heart function. **Reduction of T4** has been linked to **hypertension** [Streeton 1988] and **heart disease** [Rodondi 2010].
- Fluoride increases risk of sudden death from **ruptured aorta**
- **Diabetes**, caused or exacerbated by Fluoride, further increases risk of cardiovascular death and disability
- **Fluoridation of drinking water** at **1.5mg/L** “dramatically increased the incipient aortic calcification observed in rats with experimental chronic kidney disease” [Martín-Pardillos 2014, cited in MacArthur 2015].
- Cardiovascular disease **death rates were about 1.7 times higher** among adults aged 18 years or older with diagnosed diabetes than among adults without diagnosed diabetes. Rates for **heart attack were 1.8 times higher** among adults aged 20 years or older with diagnosed diabetes. Rates for **stroke were 1.5 times higher** [CDC 2014].

Fluoride causes **Calcification** of the **Coronary Valve and Arteries**

Fig. 3

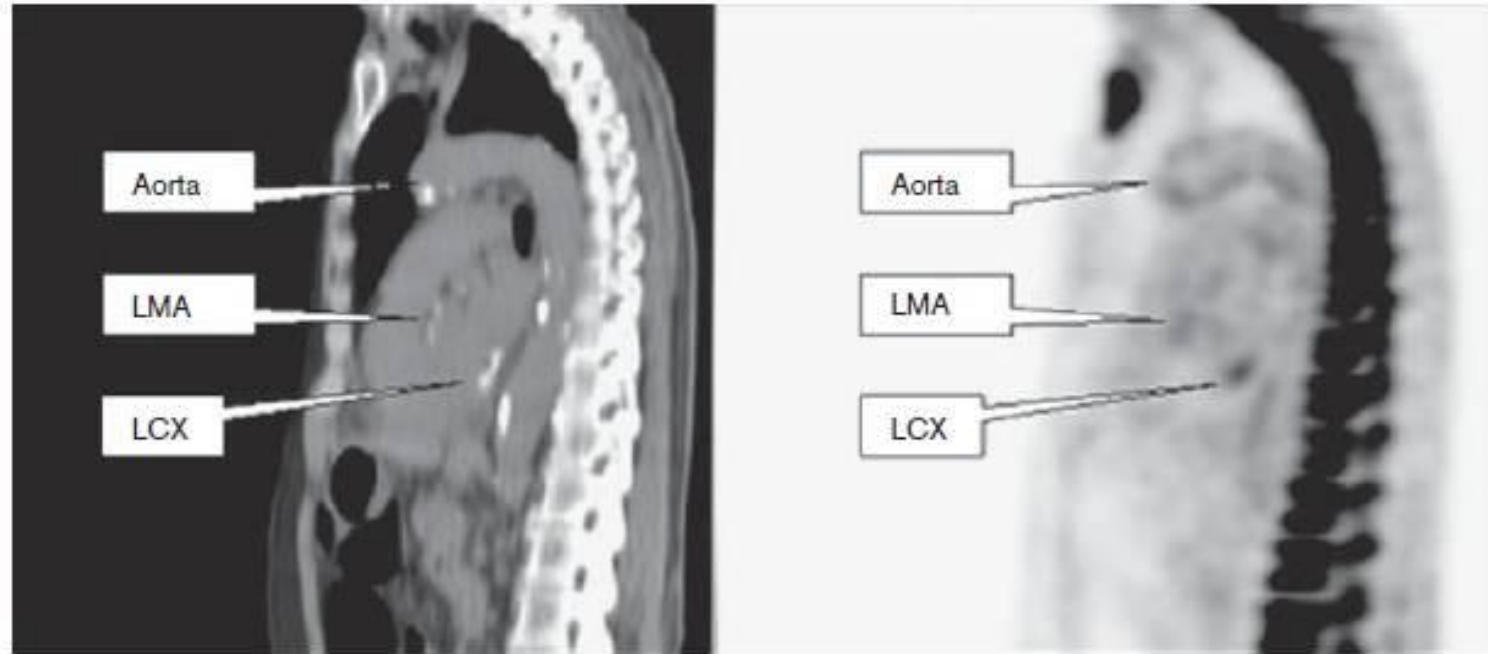


Computed tomography (left) and positron emission tomography (right) images show coronary calcification and fluoride uptake in the left anterior descending coronary artery (arrow) and the circumflex coronary artery (arrow head).

Coronary calcification dramatically increases the **adjusted risk of a coronary event and sudden death**, by **a factor of 7.73** among participants with coronary calcium scores between 101 and 300 and by **a factor of 9.67** among participants with scores above 300 ($P < 0.001$ for both comparisons) [Detrano 2008].

Fluoride causes **Calcification** of the **Aorta** which can result in **Sudden Death**

Fig. 2



Sagittal computed tomography (left) and positron emission tomography (right) images show aortic and coronary calcification and fluoride uptake. Calcification and fluoride uptake in the aorta do not always overlap. LCX, circumflex coronary artery; LMA, left main coronary artery.

The **aorta** has been found to accumulate **Fluoride up to 8,400 ppm** [Greever 1971]. The elastic properties of the ascending aorta are impaired in patients with mild levels of **fluoride** toxicity [Varol 2010].

Phosphate-induced **aortic calcification is accelerated** following exposure of uremic rats to **fluoride** in water at around **1.5 mg/L** [Martin-Pardillos].

Fluoride



Kidney patients
suffer more from
Fluoride toxicity

1.7 million
Australians

"A fairly substantial body of research indicates that patients with chronic renal insufficiency are at an increased risk of chronic fluoride toxicity. These patients may develop skeletal fluorosis even at 1 ppm fluoride in the drinking water." (Dr. Helmut Schiff, 2008)

FLUORIDE AND KIDNEY IMPAIRMENT

- *“People with kidney impairment have a **lower margin of safety for fluoride intake**. Limited data indicate that their **fluoride retention may be up to three times normal**”* (NHMRC Australian Drinking Water Guidelines 2004 and 2011)
- Investigating fluoride’s cumulative effects was a specific requirement of the Tender to do the 2007 NHMRC fluoride review (known through FOI) – **but the NHMRC didn’t investigate or report**

THREE DIE FROM FLUORIDATION POISONING AT CHICAGO MEDICAL CENTER ON 16 JULY 1993.

Deaths were caused by acute exposure of excess fluoride in the water used in the dialysis process being used on those kidney patients.

At least 5 other patients reacted to the fluoride poison.

The US Dept. Health and Human Services stated 4 January 1991 —

"If an individual is consuming abnormally large quantities of water (fluoridated) he should drink bottled water."

People on Dialysis are easily killed by Fluoride

Pyelonephritis caused by Fluoride – “Therapy” abandoned

NHMRC does not want you to know

Adams PH, Jowsey J. (1965). Sodium Fluoride in the Treatment of Osteoporosis and Other Bone Diseases. Annals of Internal Medicine. 63(6): 1151-1155. pg. 1154:

"In some animals **sodium fluoride causes severe renal damage**; renal tubular damage and renal insufficiency have been reported in endemic fluorosis (16). These renal effects of fluorine may be important, particularly when long-term therapy is contemplated. The presence of pre-existing renal disease may also influence the response to the drug, because the kidney is the principal route of fluorine excretion. A patient with renal disease (**probably chronic pyelonephritis**) has been reported (17) whose **bone contained fluorine in a concentration exceeding 5,000 ppm**. There was no history of exposures to fluorides, and her usual drinking water contained less than 0.5 ppm of fluorine. This is of interest because in a **postmortem** study in Utah (18) the highest concentrations of fluorine were found in those with **chronic pyelonephritis**; this was not true of those with chronic glomerulonephritis. It is hard to explain these findings but in chronic pyelonephritis there is commonly a defect of water conservation with polyuria and polydipsia, and this may be the important factor. Sauerbrunn and associates have reported in this issue of the ANNALS the development of **skeletal fluorosis** in a patient with chronic polydipsia; the fluorine content of his drinking water was high but it was not at a level generally associated with the production of skeletal disorder. It seems probable that in this patient and in those with chronic pyelonephritis the high concentrations of fluorine found in the bone are the result of a greater consumption of water, which leads to a greater intake of fluorine."

References:

16. Singh, A., Jolly, S. S., Bansal, B.C., Mathur, C.C.: Endemic fluorosis. Epidemiological, clinical and biochemical study of chronic fluorine intoxication in Punjab (India). Medicine (Balt.) 43: 229, **1963**.
17. Taves, D.R., Terry, R., Smith, F.A., Gardner, D.E.: Use of fluoridated water in long-term hemodialysis. Arch. Intern. Med. (Chicago) 115: 167, **1965**.
18. Call., R.A., Greenwood, D.A., LeCheminant, W.H. Shupe, J.L., Nielsen, H.M., Olson, L.E., Lamborn, R.E., Mangelson, F.L., Davis R.V.: Histological and chemical **studies in man** on effects of fluoride. Public Health Rep. 80: 529, **1965**.

Thanks to slweb.org

Gries G, et al. - "Studies on the **origin of chronic pyelonephritis in hypothyroidism**" Med Welt.17:936-9. (1996)

Townsville Suffers – Hospital Admissions

Townsville HSD residents are admitted at a higher rate than people from other parts of Queensland for potentially avoidable conditions including asthma, congestive heart failure, convulsions and epilepsy, congestive obstructive pulmonary disease, dental conditions, ear, nose and throat conditions, and pyelonephritis.

Table 11: Top 10 potentially avoidable hospitalisations, rate per 100,000, 2005-06

Condition	Townsville	Queensland
Angina	220.2	249.8
Asthma	170.9	162.3
Congestive cardiac failure	195.8	192.9
Convulsions and epilepsy	171.1	149.0
Congestive obstructive pulmonary disease	291.4	279.3
Dehydration and gastroenteritis	231.2	234.7
Dental conditions	282.9	267.0
Diabetes complications	814.8	943.2
Ear, nose and throat infections	189.4	175.3
Pyelonephritis	242.5	219.7

Source: Queensland Hospital Admitted Patient Data Collection. Prepared by: Health Surveillance, Tropical Population Health Network.

Cascade of Disaster - Pyelonephritis causes other disease

- Hypercalcemia
- Increased vascular calcification
- Reduced Bone Mineral Density
- Osteodystrophy
- Increased Fracture Risk
- Excess morbidity and **mortality**

Ref: Frost M, *et al* 2013 18F-fluoride Positron Emission Tomography Measurements of Regional Bone Formation in Hemodialysis Patients with Suspected Adynamic Bone Disease *Calcif. Tissue Int.* 93 436-437 and references therein.

FLUORIDE COMING TO A KIDNEY NEAR YOU

Fluoro silicic acid H_2SiF_6 used in water fluoridation may contain

Antimony
Arsenic
Barium
Beryllium
Cadmium
Chromium
Copper
Iron
Lead
Mercury
Selenium
Thallium
Zinc



Fluoride is NOT SAFE
for people, pets or
the environment

Fluoride causes Diabetes leading to Disease and premature Death

See my review

https://www.researchgate.net/publication/273442062_Fluoride_Causes_Diabetes

Over time, poorly managed diabetes can damage cells' ability to hold together, causing serious problems.



Lost Eyesight & Blindness



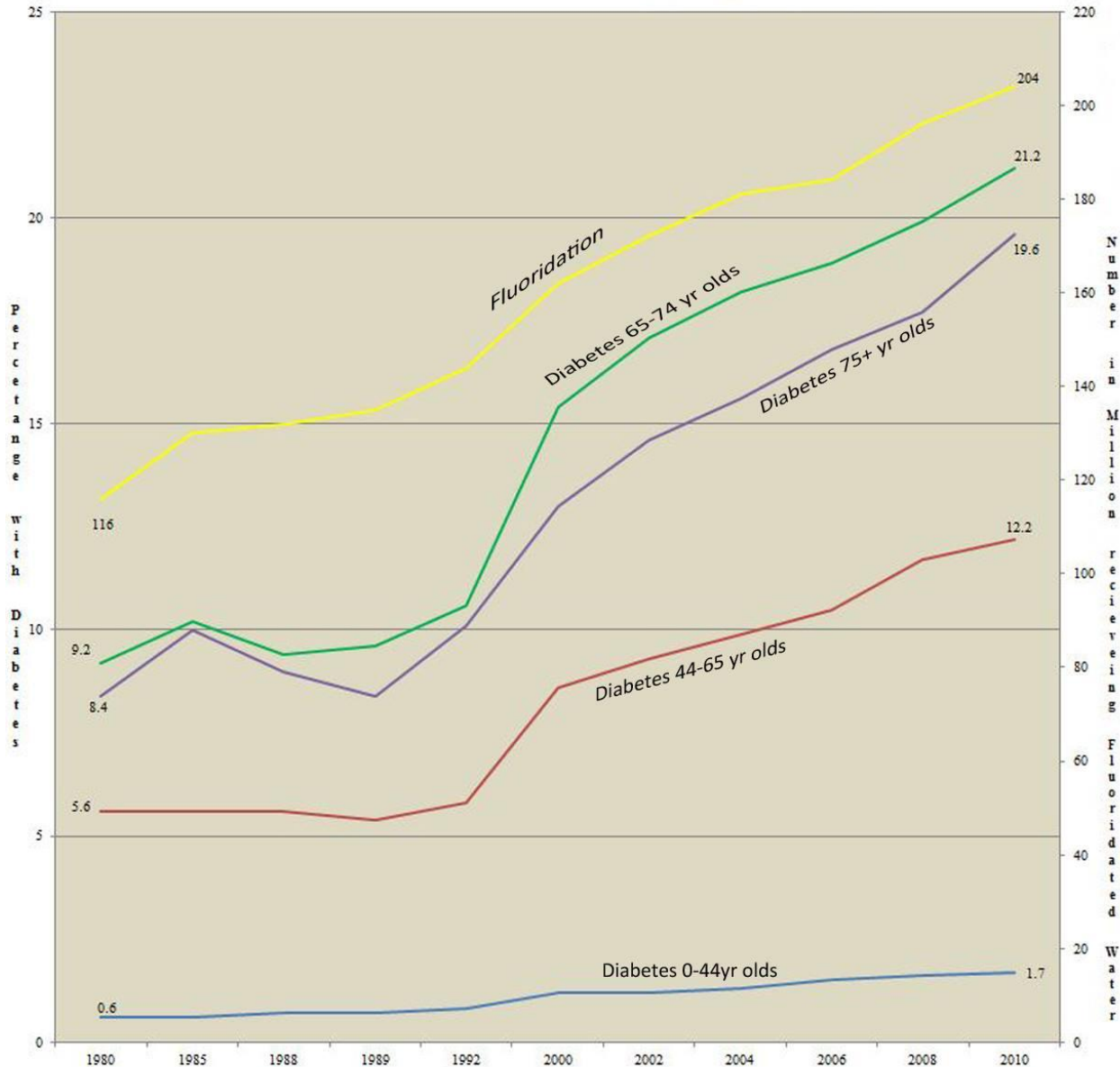
Dialysis & Kidney Failure



Sores & Amputation



CHANGES IN NUMBER OF PEOPLE PROVIDED WITH ARTIFICIALLY FLUORIDATED WATER IN USA AND INCREASE IN DIABETES PREVALENCE BETWEEN 1980-2010



Between 1980 - 2010 the number of people provided with artificially fluoridated water in the USA increased from 116 million to 204 million.

Diabetes prevalence increased by 125% for 75 + yr olds

Diabetes prevalence increased by 140% for 65-75 yr olds

Diabetes prevalence increased by 118% for 44-65 yr olds

Diabetes prevalence increased by 167% for 0-44 yr olds

References:

Diabetes data from U.S. Center for Disease Prevention and Control
 Fluoridation Status from U.S. Center for Disease Prevention and Control

Townsville Suffers – Diabetes Type 2

Diabetes Type 2 in Townsville was **10% higher** than in non-fluoridated Queensland

PHIDU. (2005) Population health profile of the Townsville Division of General Practice. Population Profile Series: No. 78. Public Health Information Development Unit (PHIDU), **Adelaide**

World Health Organization 2012

Specialist Report on Low-Dose Endocrine Disruptors states:

Fluoride causes Diabetes and Obesity by inhibiting Insulin secretion and affecting **Thyroid** hormones.

Note: Does not appear in Executive Summary

See my review

https://www.researchgate.net/publication/273442062_Fluoride_Causes_Diabetes



Impact of **Fluoride** on Women, the Unborn and your Children

Fluoride Supplement
Manufacturers warned
against using any
supplements if pregnant

Fluoride Reduces Chance of Getting Pregnant and going full term – Sperm Damage

Sun et al 2011 Arch Toxicol 85, 1441-1452 Fluoride-induced apoptosis and gene expression profiling in mice sperm in vivo

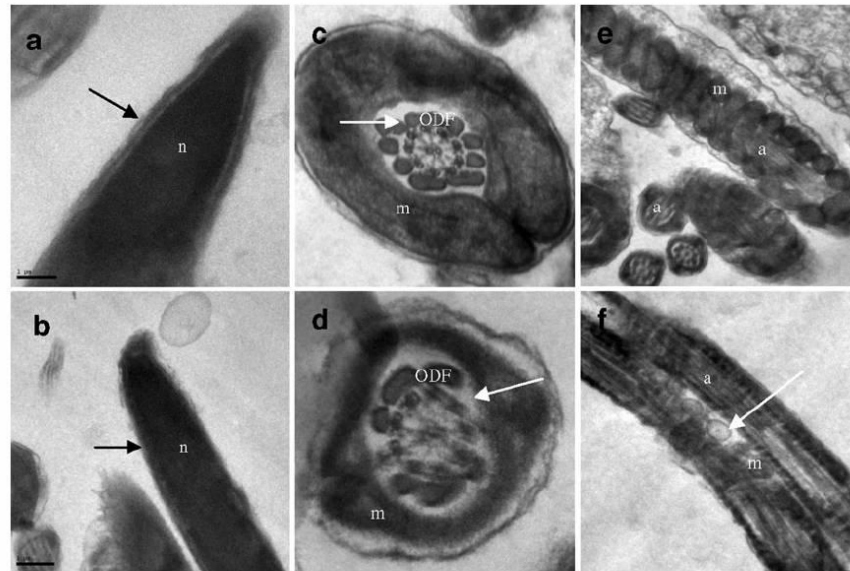


Fig. 1 Electron micrographs of mouse sperm nucleus and the middle piece of sperm tail. a Sperm nucleus (n) from controls showing the integral perinuclear membrane (arrow) surrounding the n (magnification: $\times 80,000$). b n of sperm in mouse exposed to 150 mg/l NaF showing the absence of perinuclear membrane (arrow) (magnification: $\times 30,000$). c Cross-section of the middle piece of sperm tail from control group presenting normal arranged outer dense fibers (ODF) as

the arrow pointed (magnification: $\times 100,000$). d Sperm tail of mouse treated with NaF showing the loss of ODF (magnification: $\times 100,000$). e Mitochondria (m) in control sperm are tightly arranged around the axoneme (a) (magnification: $\times 30,000$). f m in mouse sperm from NaF group is swollen and less dense than the controls (arrow) (magnification: $\times 30,000$)

Table 2 Effect of 49-day ingestion of sodium fluoride on fertility of male mice (mean \pm SEM)

Group	No. of males	No. of females	Pregnant females	No. of implantations	No. of viable fetuses	Resorptions/implantations
Control	10	10	9/10 (90%)	8.13 \pm 0.64	8.13 \pm 0.64	0/73
150 ppm	10	10	4/10 (40%)*	7.75 \pm 0.47	6.00 \pm 0.41*	7/30*

* $P < 0.05$ (compared with the control group)

FLUORIDATED AT BIRTH

If you live in a fluoridated country
fluoridation of your baby begins at

conception.

75% of the maternal dietary
fluoride intake is passed to the
developing child, where it accumulates in its
developing bones and organs.

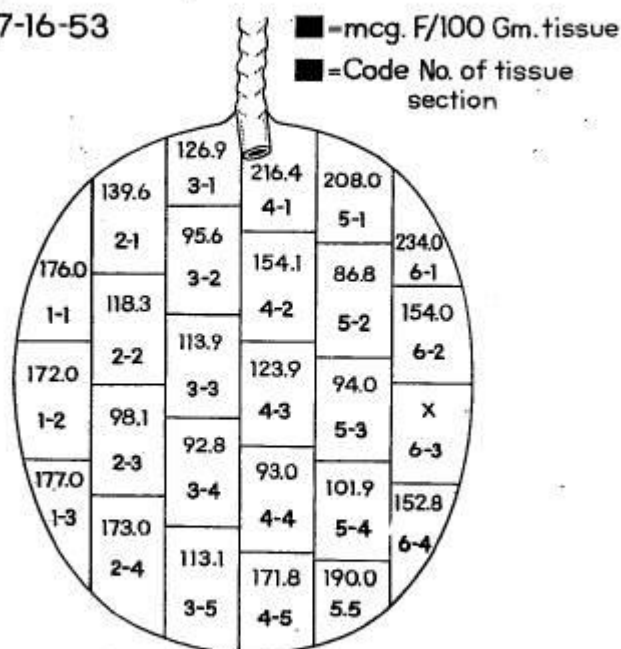


“Control” 141

Enziflur tablets 102

FIGURE II
WHOLE PLACENTAS
(Control)

J.G., 7-16-53



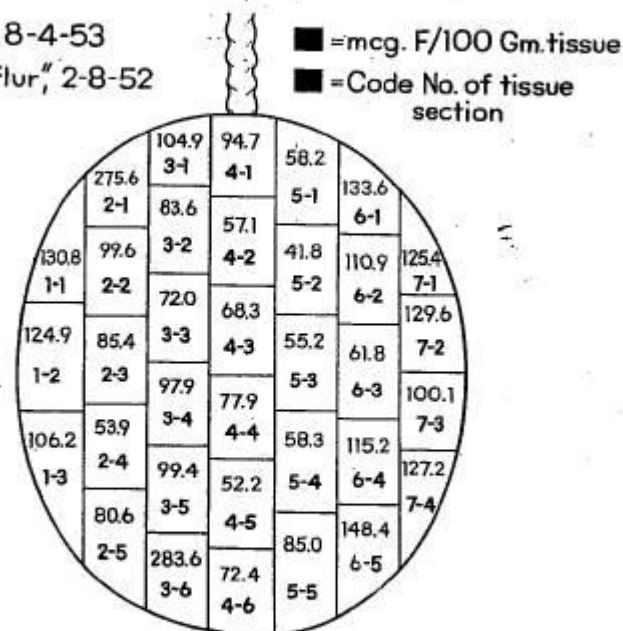
(Not an accurate reproduction)

Weight: 612.23 Gm.

Average: 141.1 mcg. F/100 Gm. placenta

FIGURE I
WHOLE PLACENTAS

T. B., 8-4-53
"Enziflur," 2-8-52



(Not an accurate reproduction)

Weight: 667.45 Gm.

Average: 102.1 mcg. F/100 Gm. placenta

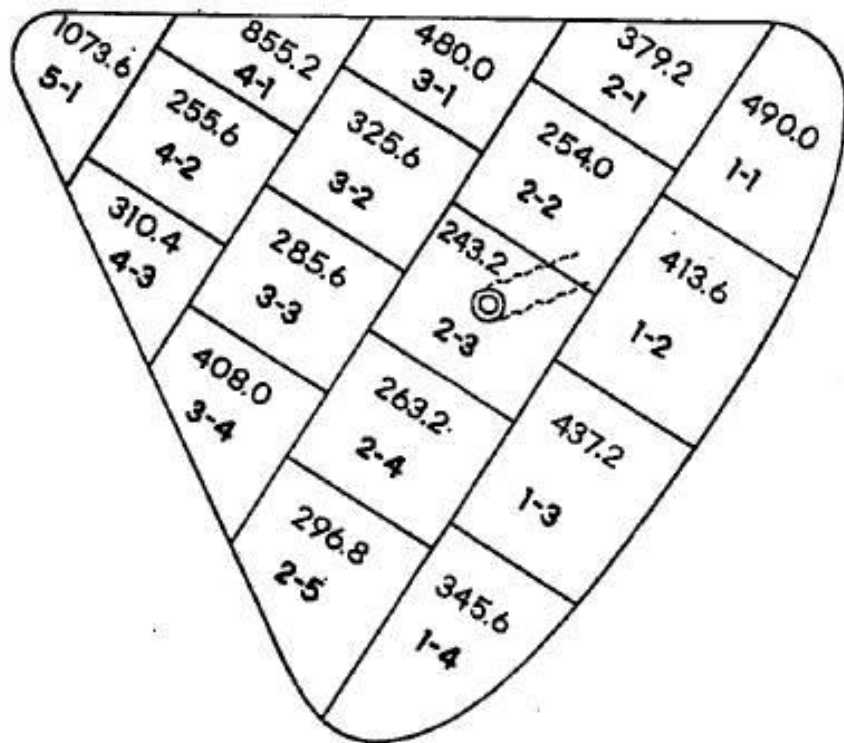
FIGURE III WHOLE PLACENTAS

(Sodium Fluoride)

G.L., 12-19-53

■ = mcg. F/100 Gm. tissue

■ = Code No. of tissue section



Sodium
Fluoride

418 mcg/100g

(Not an accurate reproduction)

Weight: 427.55 Gm.

Average: 418.6 mcg. F/100 Gm. placenta

The urine and serum fluoride levels of the pregnant women and the bone and brain fluoride content of the fetuses are shown in Table 1.

Table 1. Urine and serum fluoride of the pregnant women, and bone and brain fluoride of the fetuses^a (mean±SD)

Group	n	Pregnant women		Fetuses	
		Urine F ⁻ (µg/mL)	Serum F ⁻ (µg/mL)	Bone F ⁻ (µg/g)	Brain F ⁻ (µg/g)
Non-fluorosis area	10	1.67±0.82*	0.41±0.15	2.50±0.11*	1.23±0.24*
Fluorosis area	10	4.32±2.94	0.55±0.21	2.87±0.25	1.65±0.33

^aThe bone and brain fetal fluoride levels are dry tissue analyses; *p<0.05 comparing the non-fluorosis and the fluorosis area groups.

The levels of monoamine neurotransmitters in the fetal brain tissue are given in Table 2.

Table 2. Levels of monoamine neurotransmitters in fetal brain tissue (mean±SD)

Group	n	Nor-epinephrine (mg/g)	Epi-nephrine (mg/g)	Dopamine (ng/g)	3,4-dihydroxy-benzoic acid (ng/g)	5-hydroxy-tryptamine (ng/g)	5-hydroxy-indole-acetic acid (ng/g)
Non-fluorosis area	10	92.92±41.12*	17.44±2.82*	5.28±2.79	8.01±4.36	450.60±319.93*	37.53±20.14
Fluorosis area	10	32.81±18.30	21.84±2.92	7.34±3.92	10.34±8.66	123.34±31.91	31.28±18.95

*p<0.05 comparing the non-fluorosis and the fluorosis area groups.

Yu et al 2008 **Neurotransmitter and Receptor Changes in the Brains of Fetuses from areas of Endemic Fluorosis. Fluoride 41(2) 134-138**

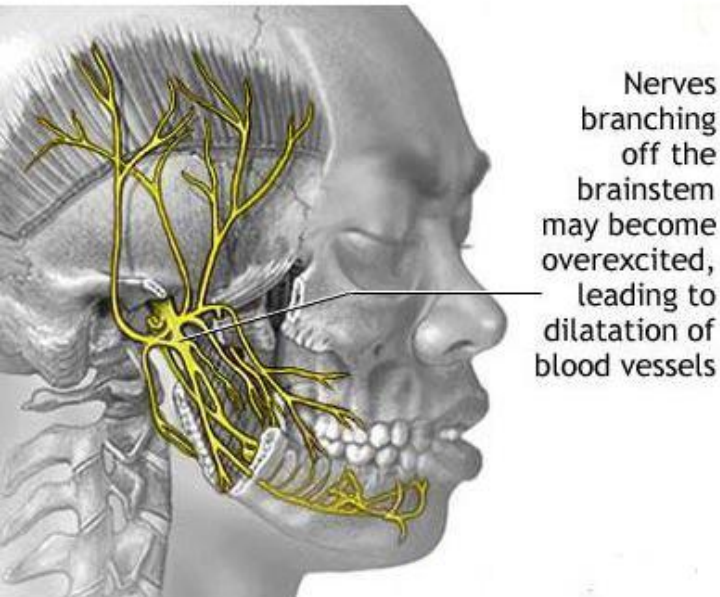
NDA withdrawn for fluoride and vitamin combinations

The FDA has addressed a “regulatory letter” to approximately 35 companies marketing combination drugs consisting of fluoride and vitamins. The letter states that these drugs are related to a product (Enziflur lozenges) for which FDA has withdrawn approval of a new drug application. The NDA for Enziflur was withdrawn because there is no substantial evidence of drug effectiveness as prescribed, recommended, or suggested in its labeling. The FDA has therefore advised manufacturers of combination fluoride and vitamin preparations that their continued marketing is in violation of the new drug provisions of the *Federal Food, Drug, and Cosmetic Act*; they have, therefore, requested that marketing of these products be discontinued.

DRUG THERAPY/JUNE 1975



DID YOU KNOW THAT IT HAS BEEN
MEDICALLY DOCUMENTED
IN DOUBLE BLIND CLINICAL STUDIES
THAT EXPOSURE TO
FLUORIDE
CAN CAUSE **MIGRAINE**
IN CHILDREN AND ADULTS



Journal of Dental Medicine (Volume 16, No 4, October 1961)
Data from a 14 year study involving 1000 subjects

The same **1961** study by Reuben Feltman and George Kosel, Fluoride “supplement” **promoters**, showed that **Fluoride causes:**

- Eczema
- Atopic Dermatitis
- Epigastric distress
- Emesis (vomiting)
- Hypothyroidism
- Fluorosis
- Delayed eruption of teeth

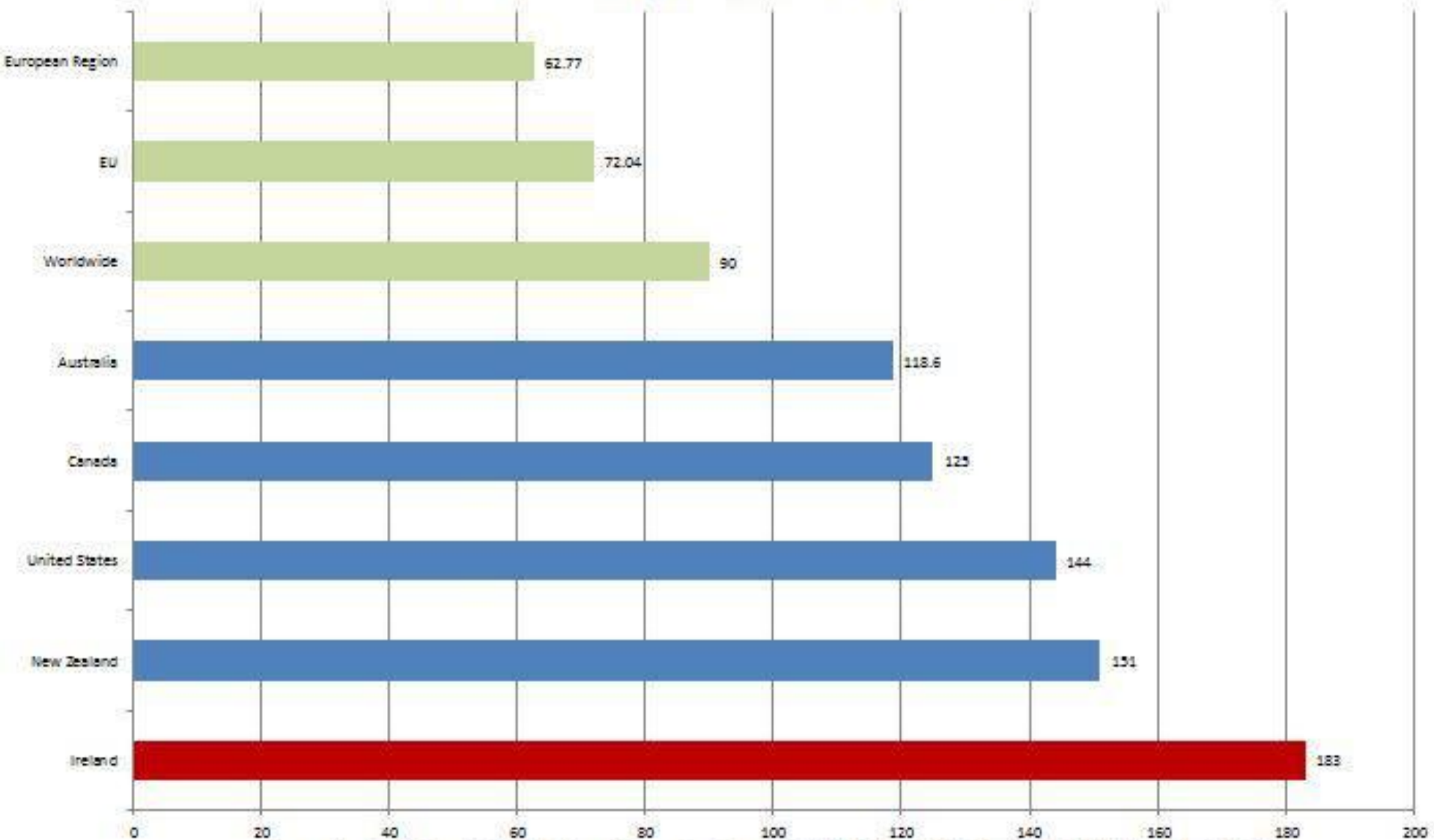
These Fluoride **promoters** stated:

“When adverse reactions occur, the therapy can be readily discontinued and the patient or parent advised of the fact that sensitivity exists and the element (**Fluoride**) is to be avoided as much as possible”

If your water is Fluoridated, how are you expected to **avoid** Fluoride?



Births with Downs Syndrome Incidence per 100,000



Source: American Academy of Pediatrics. "Down Syndrome Prevalence in The United States." Medical News Today. Medilexicon, Intl., 1 Dec. 2009.

Am J Hum Genet. 1991 November; 49(5): 1014-1024. MCID: PMC1683237

Prevalence of Down Syndrome Among Children and Adolescents in 10 Regions of the United States. Pediatrics December 2009 (124:6):1565-1571.

Canada, Congenital Anomalies in Canada: A Perinatal Health Report, Public Health Agency of Health Canada (2002).

WHO European Health Database 2012

Fluoride Messes with Your Mind

- Impaired memory and concentration
- Hypnesthesia (Drowsiness, Sluggishness)
- Lower reaction rates and reduced abstract thinking ability
- Decreased self-coordination ability
- Over-stimulation
- Exaggerated facial expressions
- Unusually verbose and talkative
- Apprehensive
- Transient restlessness, irascibility
- Occasional silliness and loss of contact
- Anxiety and depression

References

Rotton, James; Tikofsky, Ronald S.; Feldman, Hobart T. 1982 Behavioral effects of chemicals in drinking water. *Journal of Applied Psychology*, Vol 67(2) 230-238

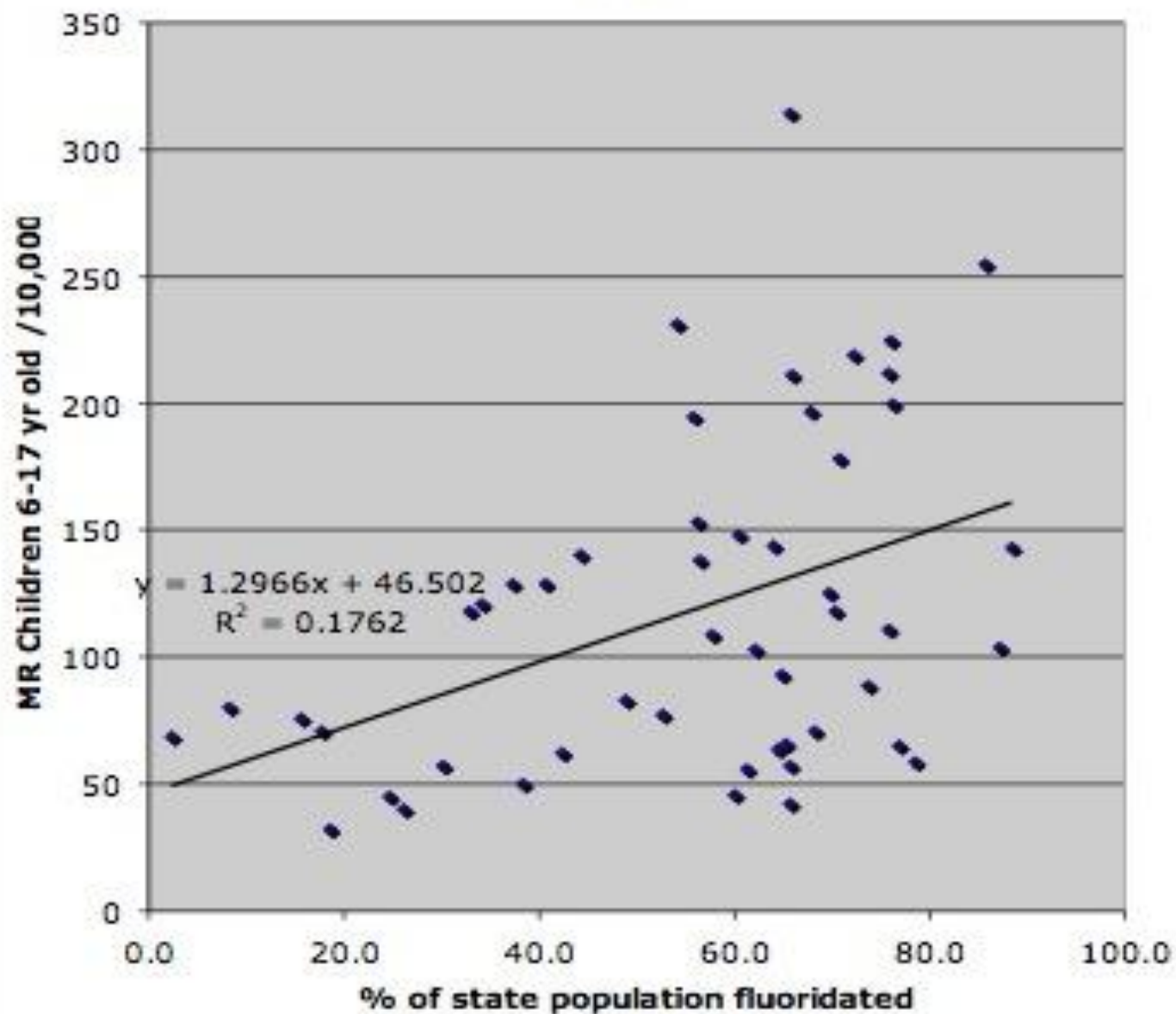
Spittle B. 1994 Psychopharmacology of fluoride: a review. *Int Clin Psychopharmacol* 9:79-82.

Mullenix PJ, Denbesten PK, Schunior A, Kernan WJ. 1995 Neurotoxicity of sodium fluoride in rats. *Neurotoxicol Teratol* 17:169-77.

Calderon J, Machado B, Navarro M, Carrizales L, Ortiz M, Diaz-Barriga F. Influence of fluoride exposure on reaction time and visuospatial organization in children. *Epidemiology* 2000;11:S153.

Liu et al 2014 Fluoride exposure during development affects both cognition and emotion in mice. *Physiology & Behavior* 124: 1-7

**FLUORIDATION'S EFFECT ON MENTAL RETARDATION
1992**



May 2014

NHMRC worried about
Harvard meta-analysis
(statistical analysis of multiple independent studies) of science that shows Fluoride **reduces IQ** and that babies given **infant formula** made from fluoridated water get up to **380 times as much Fluoride as breastfed babies**, sent this email to someone at Food Standards Australia and New Zealand “seeking FSANZ comments”

I would love to read the
“**redacted**” bits of this!! →

From: [redacted] [mailto:[redacted]@nhmrc.gov.au]

Sent: Monday, 5 May 2014 10:12 AM

To: [redacted]

Cc: [redacted]

Subject: seeking FSANZ comments on fluoride and Infant formula [SEC=UNCLASSIFIED]

SEC=UNCLASSIFIED

Morning [redacted]

[redacted]
[redacted]
[redacted]
[redacted]

[redacted]
[redacted]
[redacted]
[redacted]

[redacted]
[redacted]
[redacted]
[redacted]
[redacted]
[redacted]
[redacted]
[redacted]

NHMRC is currently embarking on a project to review the evidence on the possible health effects of fluoride, and we will explore the quality literature on issues such as possible neurotoxicity and any impacts on children's development and IQ. The results of this will not be finalised for another year though.....

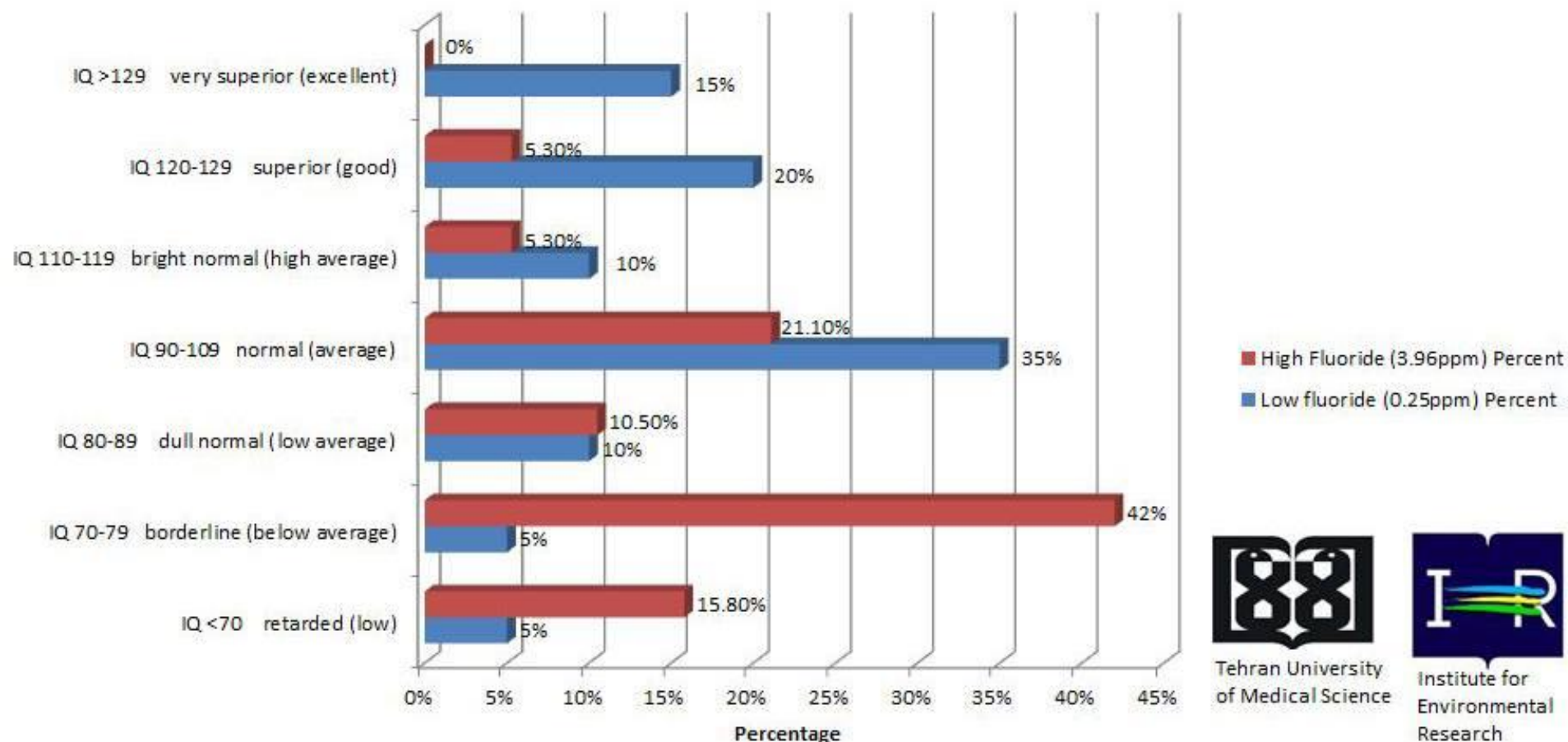
[redacted]
[redacted]

Thanks.

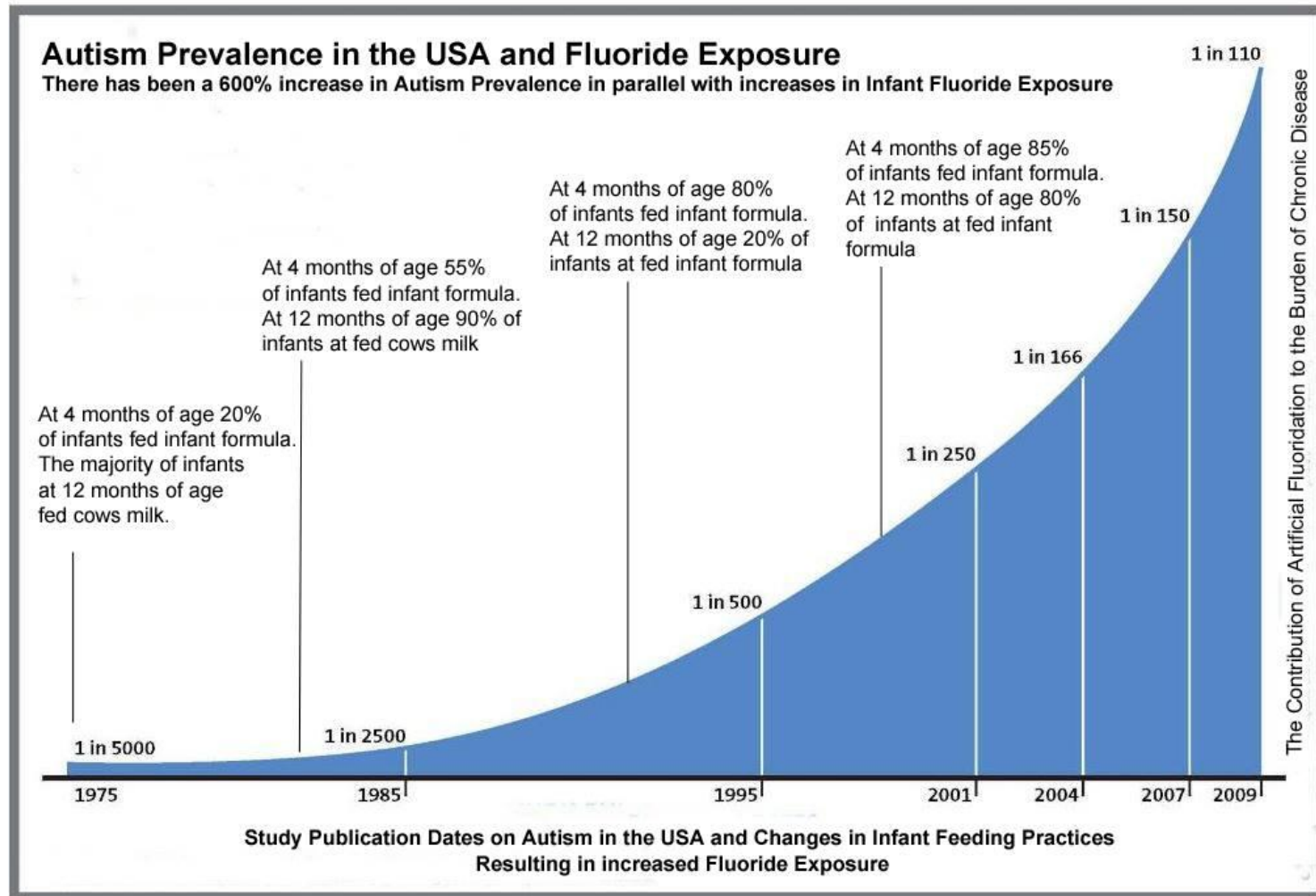
[redacted]
[redacted]
[redacted]
National Health and Medical Research Council

p : 02 6217 [redacted] f : 02 6217 [redacted] | m : [redacted]
[redacted]@nhmrc.gov.au | w : www.nhmrc.gov.au

The distribution of IQ scores of children living in areas with fluoride in their drinking water



Evidence that switching from cow's milk to **Formula** made up with **Fluoridated water** is associated with an explosion in **Autism** incidence



FUSS Causes Brain Sand Growth

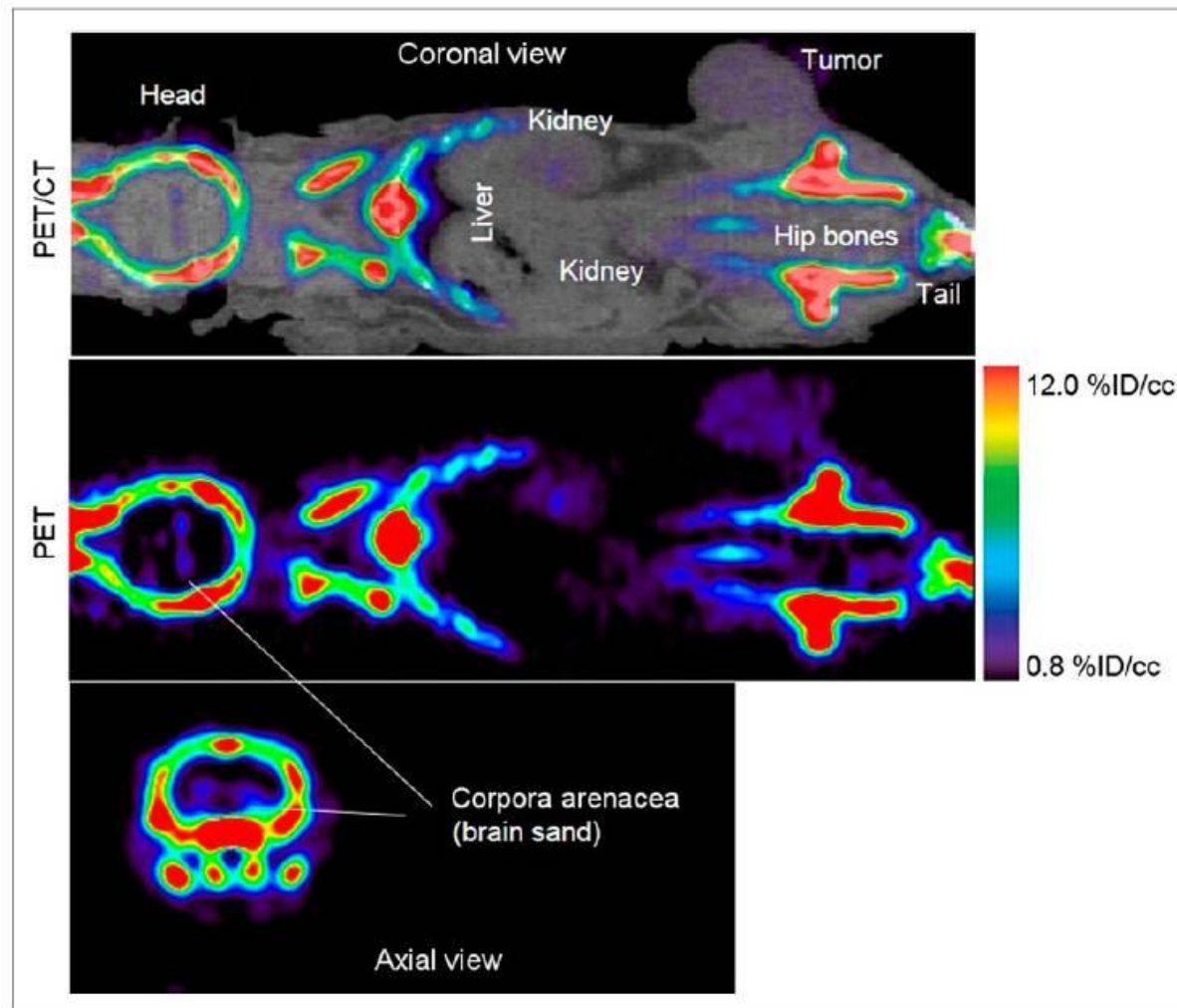


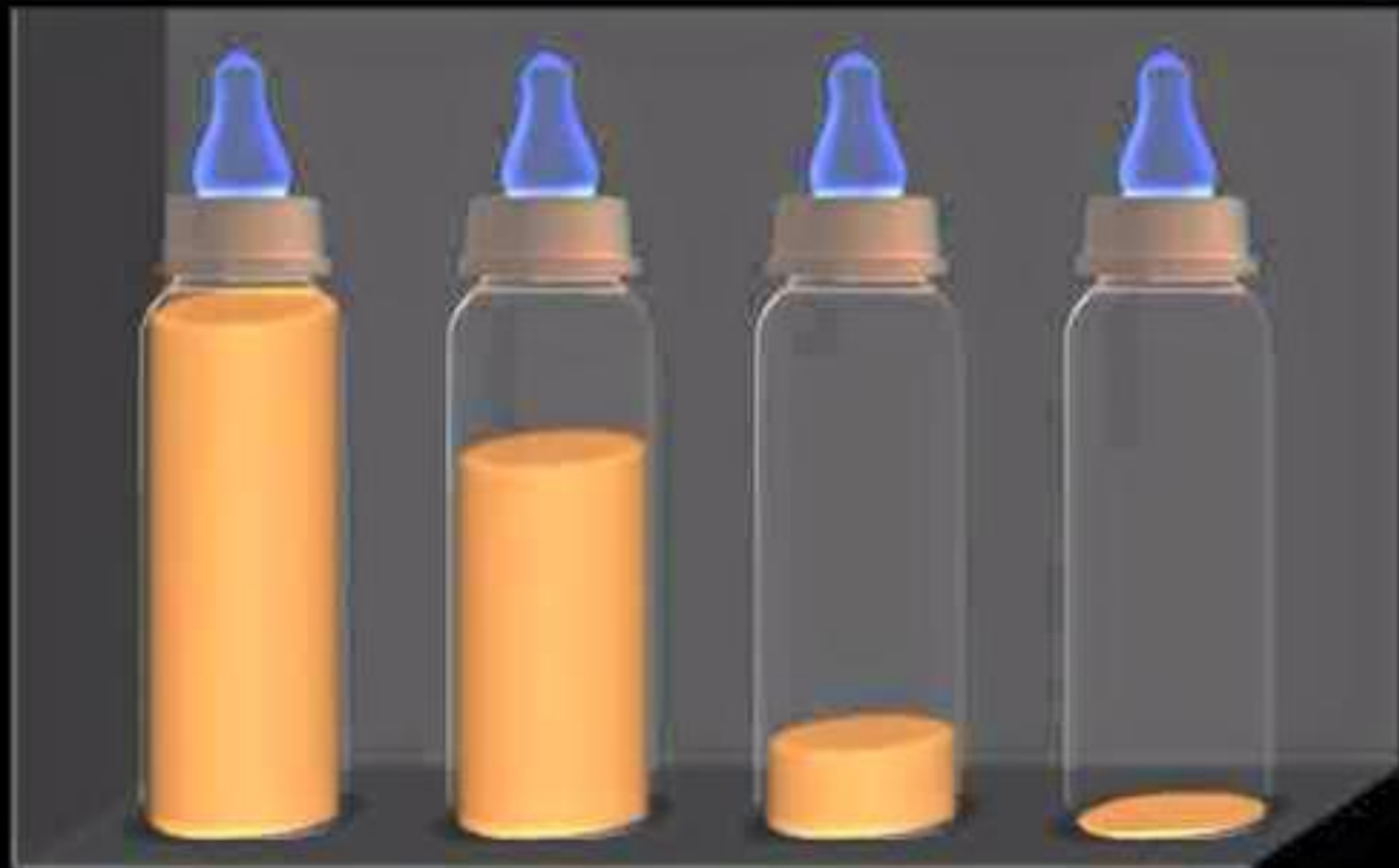
FIGURE 2. A 60- to 80-min summed PET/CT and PET image of ^{18}F uptake in mouse bearing MDA-MB-231 tumor and imaged for 120 min. With windowing level set between 0.8 and 12 %ID/cc, bone image is saturated but tumor and brain sand are visible with high contrast-to-background soft-tissue ratio



POWDERED INFANT
FORMULA
MADE WITH
FLUORIDATED
TAP WATER
CONTAINS
UP TO

38,000%
MORE
FLUORIDE THAN
MOTHERS MILK

Infant Fluoride Exposure Levels



Formula

Tap Water

Raw Water

Breast Milk

WATER FLUORIDATION

and

Attention Deficit/Hyperactivity Disorder.

In February 2013, in a comprehensive report which I submitted to the Government of Ireland, I documented that over 60,000 children in the Republic of Ireland suffer from attention-deficit/hyperactivity disorder (ADHD), with a further 120,000 adults in Ireland also believed to be living with this disability. In this report I highlighted that artificial fluoridation of water may be contributing to this epidemic of neurological disorders.

Despite sending this document to every elected representative in Ireland as well as the Chief Medical Officer in the Health Service Executive, I have received no acknowledgement nor reply to this report.

Exactly two years later, on the 27th February 2015 researchers at the Department of Psychology, York University, Canada, have now published findings in the journal *Environmental Health*, which demonstrate a direct association between exposure to fluoridated water and increased ADHD prevalence in U.S. children and adolescents. Each 1% increase in artificial fluoridation prevalence was associated with approximately 67,000 to 131,000 additional ADHD diagnoses from 2003 to 2011.

For the sake of your childrens health and the future of this country, please share this information.

Declan Waugh

Scientist and Fluoride Researcher

“Each 1% increase in artificial fluoridation prevalence was associated with 67,000 to 131,000 additional ADHD diagnoses from 2003 to 2011”

Some Facts on **FLUORIDE** and **Sudden Infant Death**

Six years after the global implementation of the back to sleep campaign in 1991, the SIDs rate in Ireland, Australia, NZ and USA was approximately double that for other developed European countries including England and Wales, Sweden, the Netherlands and Norway. In 2001, the Institute of Public Health reported that for the period 1991-2000 the SIDs rate in the Republic of Ireland was **310%** higher than non fluoridated Northern Ireland.

Official statistics for SIDS for NI for the years **2006-2010** reported a prevalence of SIDs from birth to one year of 0.12 per 1000 live births. For the same period the corresponding figure for Ireland was 0.34 per 1000 live births. That's a **288%** difference.

- Fluoride **increases** production of **Arachidonic Acid** which has been shown to have a causal association with sudden infant death syndrome and sudden adult death from cardiac failure.
- Fluoride **inhibits Cholinesterase**, low cholinesterase is known to have a causal association with SIDs.
- Fluoride alters **Sialidase** metabolism in the lung which increases risk of respiratory infection. Respiratory infection has a causal association with SIDs and infant mortality.
- Fluoride **inhibits Periostin** production in the lung which binds to collagen maintaining the biomechanical properties of the lung. Low periostin levels is recognised as a risk factor in respiratory disorders.
- Fluoride has been demonstrated to **decrease Collagen** production in lung tissue, contributing to greater risk of respiratory disorders.
- Fluoride has been demonstrated to contribute to **maternal anaemia** in pregnancy, **preterm births** and of **low birth weight babies**. Preterm births and low birth weight are known to have a causal association with SIDs.
- Fluoride accumulates in the pineal gland, altering its function and contributing to reduced **melatonin**. Low melatonin is an established risk factor in SIDs.

Declan Waugh.

Scientist and Fluoride Researcher

**Fluoride
exacerbates 9
known risk factors
for
Sudden Infant Death**

Fluoride linked to increased Cancer

- Bladder
- Bone
- Brain
- Breast
- Cervix
- Colon
- Gallbladder
- Hodgkin's Disease
- Kidney
- Leukaemia
- Liver
- Lung
- Lymphoma
- Myeloma
- Nasal and Sinus
- Oesophagus
- Oral cavity
- Ovary
- Pancreas
- Pharynx
- Prostate
- Rectum
- Uterus

Reviewed in Pain G. 2015.

Fluoride doped Hydroxyapatite in Soft Tissues and Cancer – A Literature Review
available at Research Gate

TABLE 3. GASTROINTESTINAL TRACT CANCER DEATH RATE.

CANCER DEATH RATE DUE TO CANCER OF THE:	<u>Cancer Death Rate (per 100,000).</u>			% INCREASE FLUORIDATED CITIES NONFLUORIDATED CITIES
	NATIONAL AVERAGE	NONFLUORIDATED CITIES	FLUORIDATED CITIES	
Tongue and mouth	4.21	5.26	7.59	44%
Esophagus	4.10	4.18	7.19	72%
Stomach	15.22	12.61	18.39	45%
Large Intestine	16.54	15.30	21.43	40%
Rectum	7.65	6.09	10.98	80%
TOTAL (Gastro- intestinal Tract)	47.72	43.44	65.58	51%

Table 3 shows that most (about 65%) of the increase in cancer death rate from fluoridation is due to an increase in gastrointestinal cancer death rate.

From Yiamouyiannis, JA. 1975. A Definite Link Between Fluoride And Cancer Deaths. *Nat. Health Fed. Bulletin* 21:9

Uterine Cancer Rate versus Fluoride in Japan

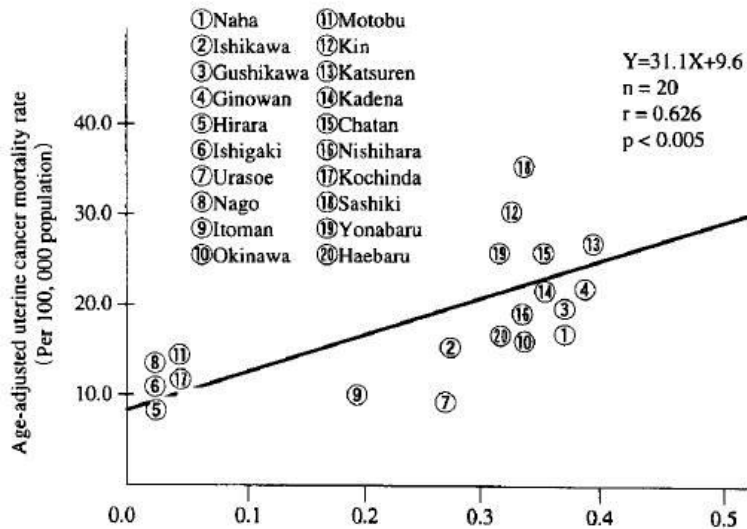


Figure 2. Scatter plot of fluoride concentration versus uterine cancer mortality rate.

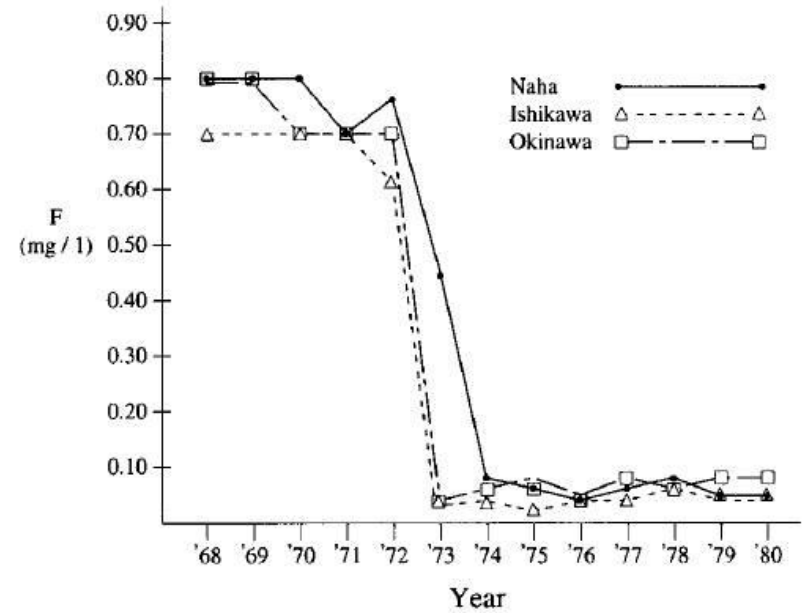


Figure 3. Secular changes in fluoride concentration of drinking water for 3 typical fluoridated municipalities.

Tohyama, E. **1996**. Relationship Between **Fluoride** Concentration in Drinking Water and **Mortality Rate** from **Uterine Cancer** in Okinawa Prefecture, Japan. *Journal of Epidemiology*. 6(4) 184-191
 Note: The Americans Fluoridated Okinawa from 1945-1972

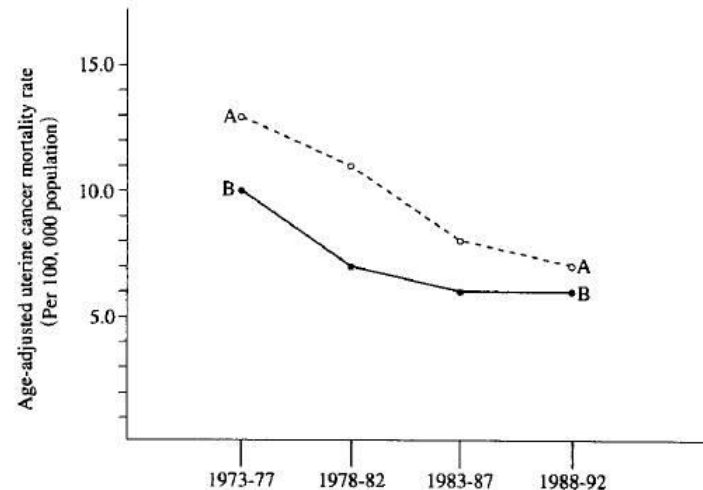


Figure 5. Uterine cancer mortality rate over a 5-year time period (1973-1992) for fluoridated municipalities (A, open circles) and non-fluoridated municipalities (B, filled circles).

Tea = Fluoride = Breast Cancer

Susanna C Larsson, Leif Bergkvist, Alicia Wolk, Division of Nutritional Epidemiology, The National Institute of Environmental Medicine, Karolinska Institute, Sweden

Followed up **61,433 women** who were **cancer free** at baseline in 1987-1990
Over a mean **follow-up of 17.4 years**, through December 2007, there were 2,952 incident cases of invasive breast cancer identified. **Coffee consumption was not associated with risk** of overall breast cancer (multivariate relative risk (RR) for ≥ 4 cups/day versus <1 cup/day = 1.02; 95% CI, 0.87-1.20) or with any subtype defined by ER and PR status. **Black tea consumption was significantly positively associated with risk** of overall **breast cancer** (RR 1.22 95% CI 1.05-1.40) and **ER+/PR+ tumors** (RR 1.36 95%CI 1.09-1.69).

Ref: Larsson SC et al. 2009. Coffee and black tea consumption and risk of breast cancer by estrogen and progesterone receptor status in a Swedish cohort. **Cancer Causes and Control**, 20(10) 2039-2044

FUSS causes malignant breast cancer

“It (breast cancer) is the second leading cause of cancer death among women, causing almost 40,000 deaths in USA in 2011 alone”

“One significant feature of breast cancer diagnosis is the presence of calcium deposits (averaging 0.3 mm³ in size) detected via mammograms.”

“**hydroxyapatite** enhances the mitogenesis of mammary cells, **amplifying the malignant process and resulting in accelerated tumor growth.**”

Ref: George H. Wilson III *et al*, An Approach to Breast Cancer Diagnosis via PET Imaging of Microcalcifications Using ¹⁸F-NaF,
THE JOURNAL OF NUCLEAR MEDICINE 2014 (7) 1138-1143

What Can **HAPPEN** to Your **THYROID** When You **CONSUME** **FLUORIDE?**



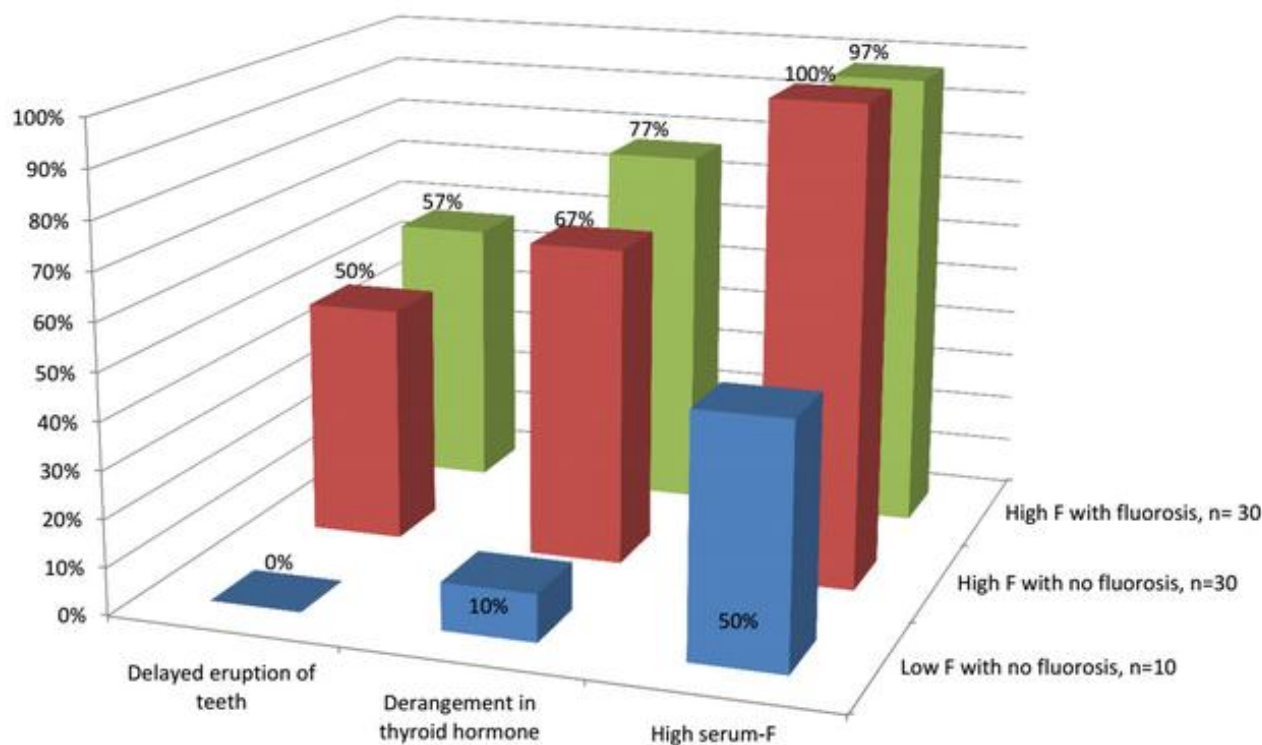
© iStock.com / Eraxion

Fluoride is well known to suppress your Thyroid function and was for many decades used to treat overactive Thyroids.

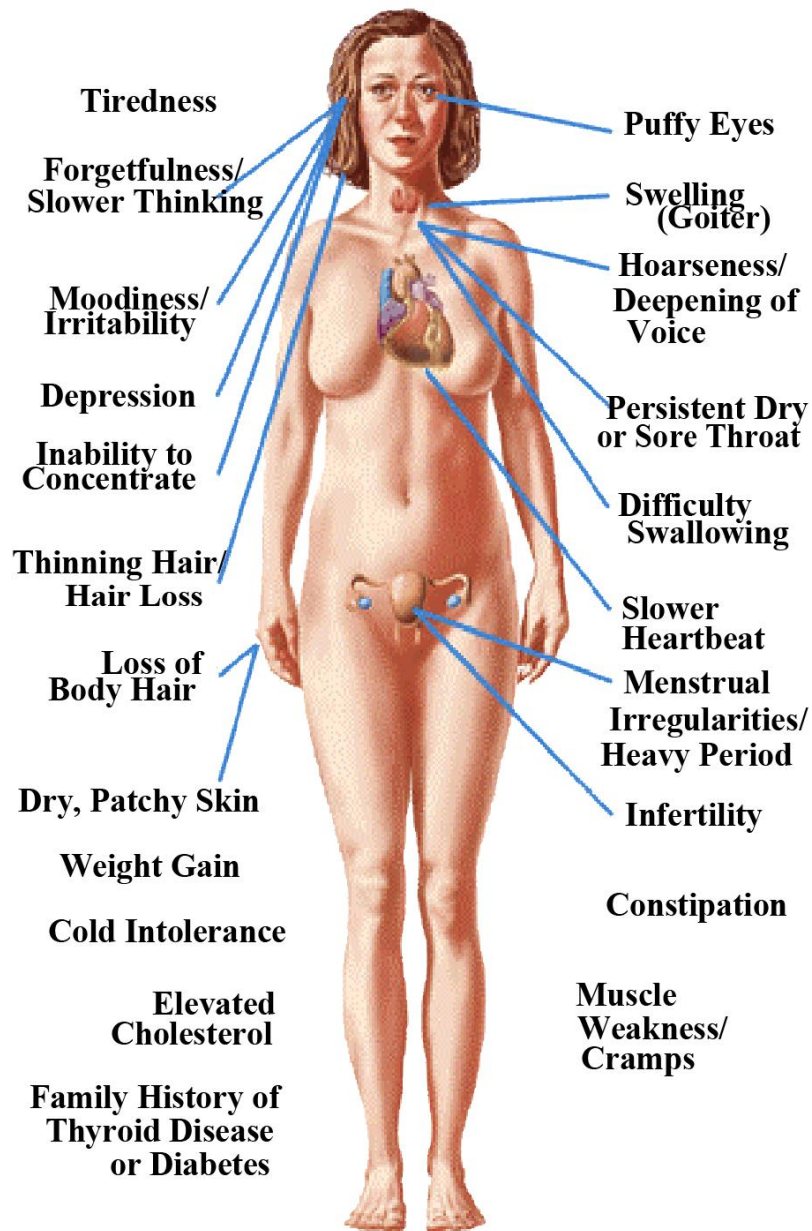
Low Fluoride, High Fluoride and High Fluoride with visible Fluorosis compared – note Thyroid Derangement and Eruption affected even with no visible Fluorosis

Derangement in Thyroid Hormone (FT3, FT4, TSH) Levels and Serum-Fluoride levels in children, high and low fluoride levels, with and without fluorosis.

Singh N, Verma KG, Verma P, Sidhu GK, Sachdeva S. A comparative study of fluoride ingestion levels, serum thyroid hormone & TSH level derangements, dental fluorosis status among school children from endemic and non-endemic fluorosis areas. *SpringerPlus*. 2014;3:7.



Signs and Symptoms of HYPOTHYROIDISM



If crystals of **Fluoride**-doped **Hydroxyapatite** are detected in your Thyroid Gland, your cancer surgeon will recommend rapid removal of the entire organ to reduce the high risk (> 18%) of **malignant cancer**.

Yoon, D Y et al 2007. **Peripheral Calcification in Thyroid Nodules**

Ultrasonographic Features and Prediction of Malignancy

J Ultrasound Med 26:1349–1355

Fluoride accelerates Post-menopausal Osteoporosis by altering Hydroxyapatite

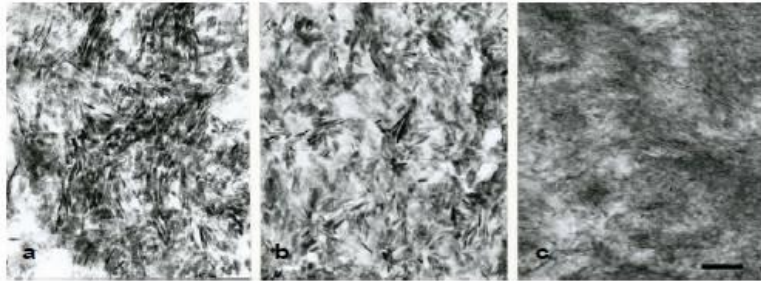


Figure 2: Lower magnification of electron micrographs of minerals observed in the control (a), X-ray-opaque (b) and X-ray-transparent areas (c) of the calvaria obtained from the combined group. Minerals of X-ray-transparent areas are less abundant than those in X-ray opaque area. (a-c): same scale, bar = 100 nm.

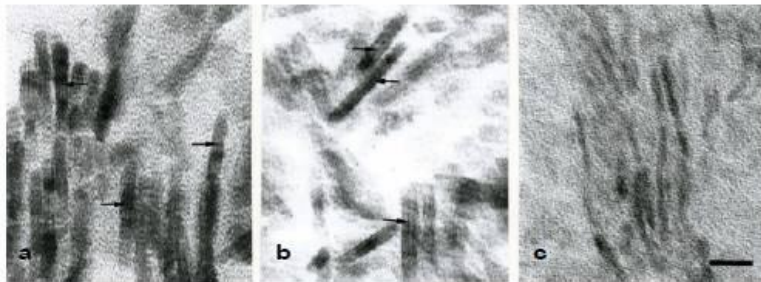


Figure 3: Higher magnification of electron micrographs corresponding to Figure 2. Minerals observed in the control (a) and in the radiopaque areas (b) are crystals showing central dark lines, whereas those in radiolucent area (c) are amorphous and not crystallized. Arrows indicate the central dark lines. (a-c): same scale, bar = 10 nm.

Obvious change in crystal morphology due to Fluoride in Estrogen deficient rats

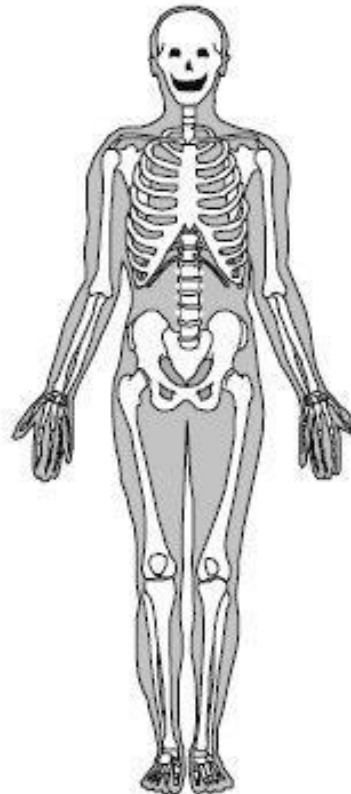
Mitsuo Takei, Masayoshi Yoshikawa and Hiroyuki Mishima 2016 Fluoride Exposure May Accelerate the Osteoporotic Change in Postmenopausal Women: Animal Model of Fluoride-induced Osteoporosis. Advanced Techniques in Biology & Medicine 4(1).

A subject that The Australian Medical Association chooses not to teach to our doctors.

SKELETAL FLUOROSIS

RADIOLOGICAL PRESENTATIONS

- Osteosclerosis
- Periosteal bone formation
- Calcification of interosseous membrane, ligaments, capsules, muscular attachments, tendons.
- Exostoses
- Osteophytosis
- Associated metabolic bone disease



CLINICAL PRESENTATION

- Heel pain
- Painful and restricted joint movements
- Deformities in Limbs
- Hunch back

IN EXTREME CASES

- Paralysis,
- Muscular wasting,
- Premature aging

Fluoride causes crippling Bone Deformity

Fluoride Excess and Periostitis in Transplant Patients Receiving Long-Term Voriconazole Therapy

Robert A. Wermers, Kay Cooper, Raymund R. Razonable, Paul J. Deziel, Gary M. Whitford, Walter K. Kremers and Thomas P. Moyer
Clinical Infectious Diseases Jan 2011



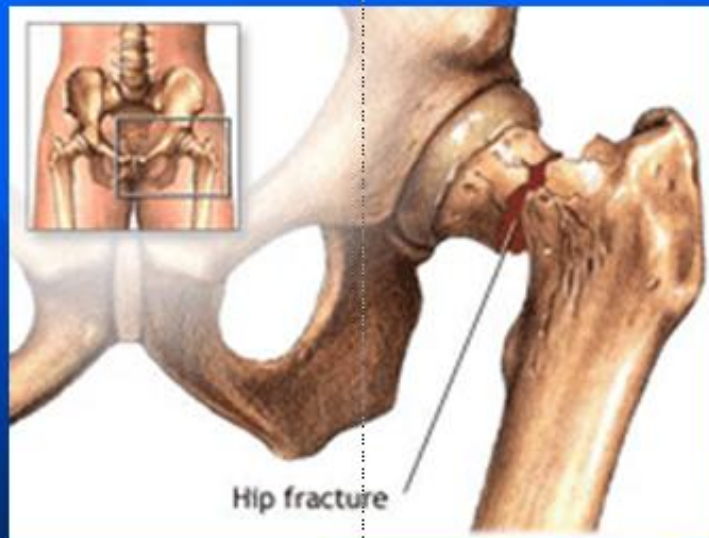
All subjects who received voriconazole had markedly elevated plasma fluoride levels - ($14.32 \mu\text{mol/L} \pm 6.41$ compared to $2.54 \pm 0.67 \mu\text{mol/L}$ in controls, $p < 0.001$). Half of the treated group had evidence of periostitis.

Figure 1. Radiograph of the left hand and forearm demonstrating numerous areas of periosteal ossification arising from the cortical surfaces, some of which are indicated by the arrows.

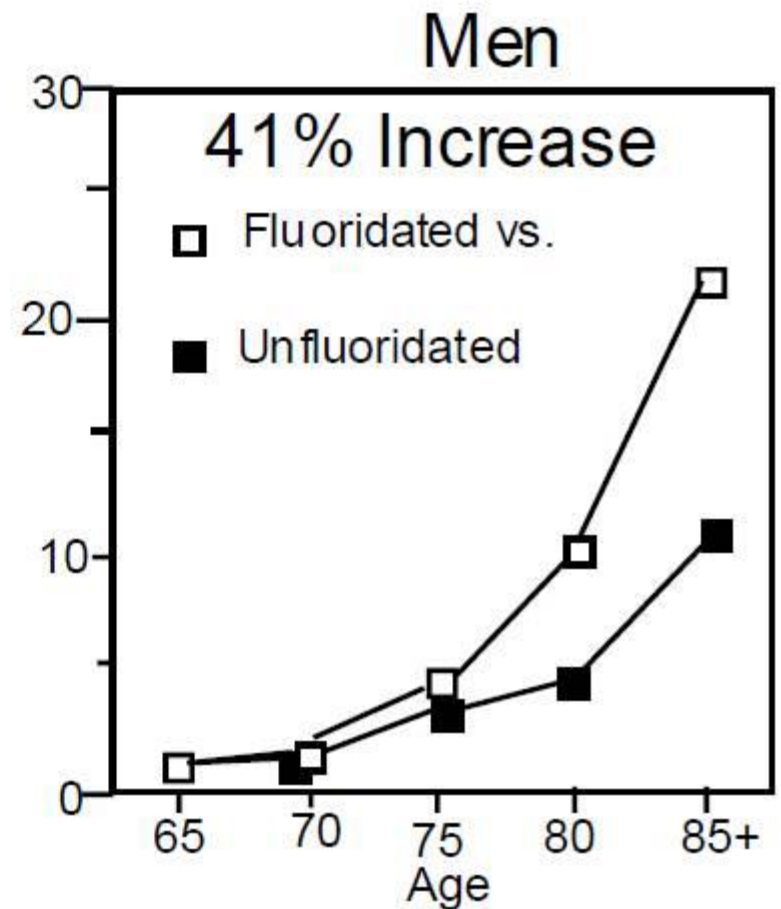
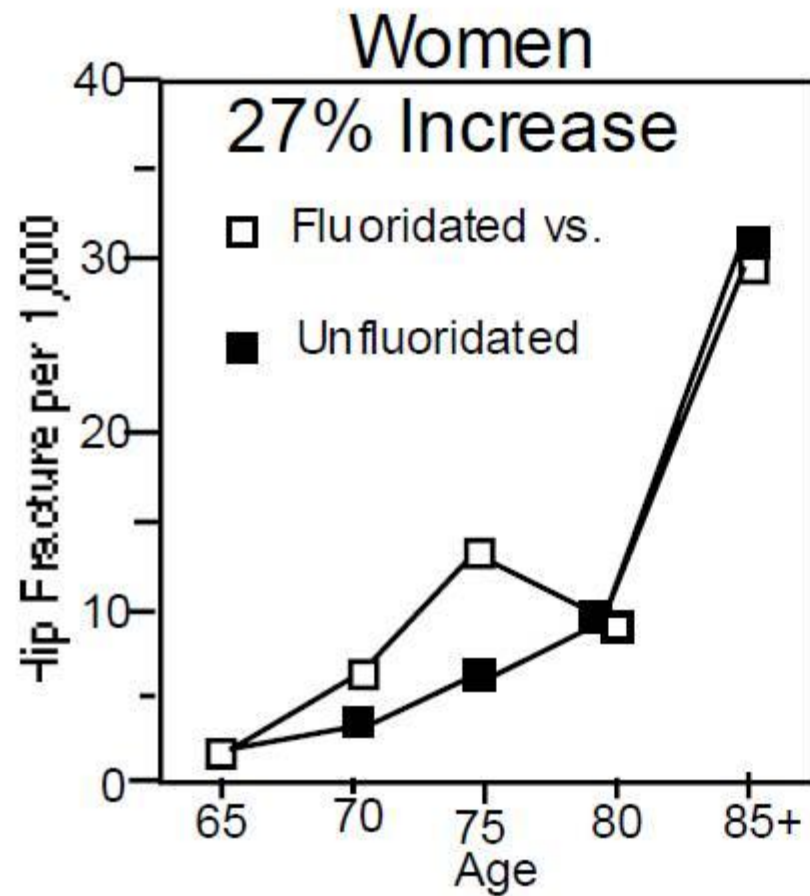


FLUORIDE ACCUMULATES IN BONES

National Research Council (2006):
Fluoride & Skeletal System



"All members of the committee agreed that there is scientific evidence that under certain conditions fluoride can weaken bone and increase the risk of fractures."



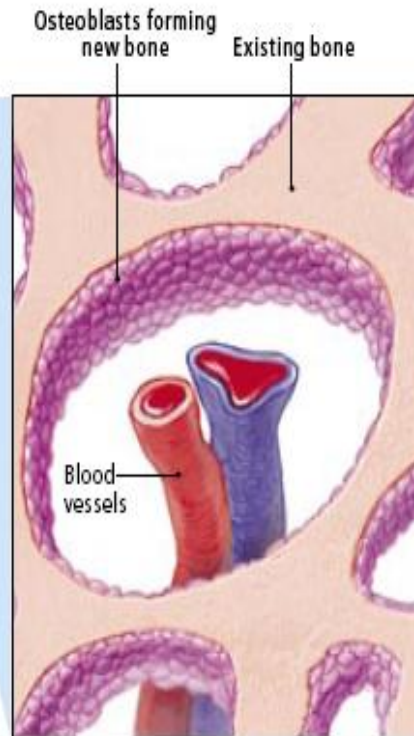
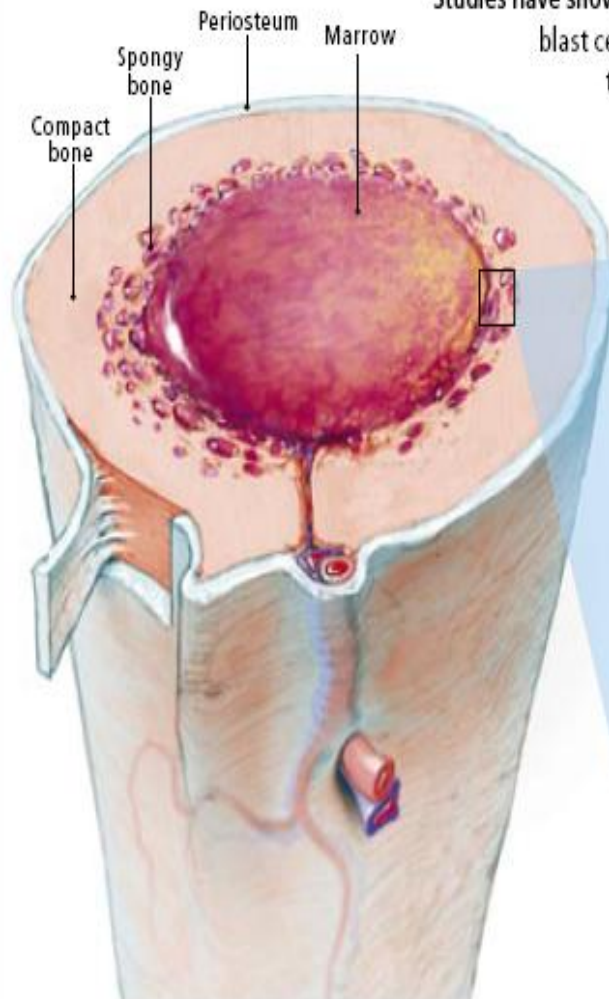
Hip Fractures in Women and Men increase with Age and **Fluoride** accumulation

Scientific American 2008 – Mainstream Media!

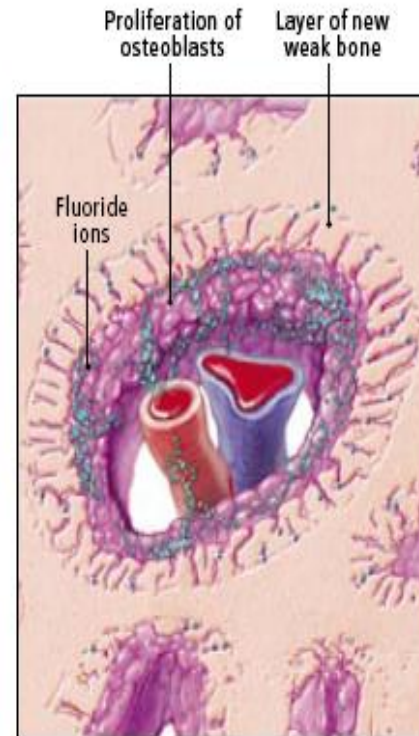
[AREA OF CONCERN]

IS FLUORIDE WEAKENING BONE?

Scientists have focused on fluoride's effects on bone because so much of the chemical is stored there. Studies have shown that high doses of fluoride can stimulate the proliferation of bone-building osteoblast cells, raising fears that the chemical may induce malignant tumors. Fluoride also appears to alter the crystalline structure of bone, possibly increasing the risk of fractures.



▲ Normal Bone Formation



▲ Effects of Excessive Fluoride

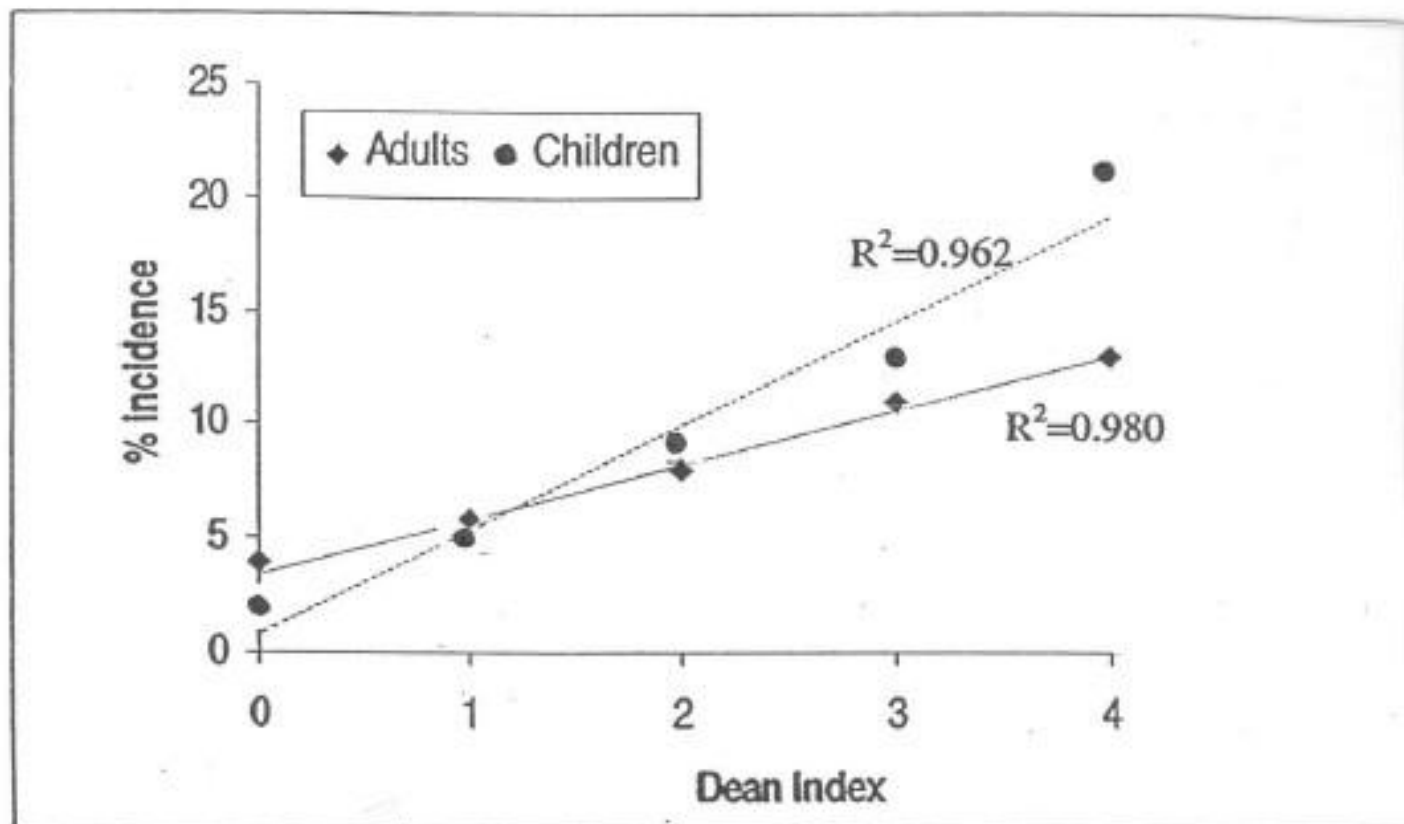


Figure 4. Incidence of bone fractures plotted against the severity of dental fluorosis (Dean's Index) for children and adults in the Guadiana Valley in the state of Durango in Mexico (from Alarcon-Herrera et al, 2001).

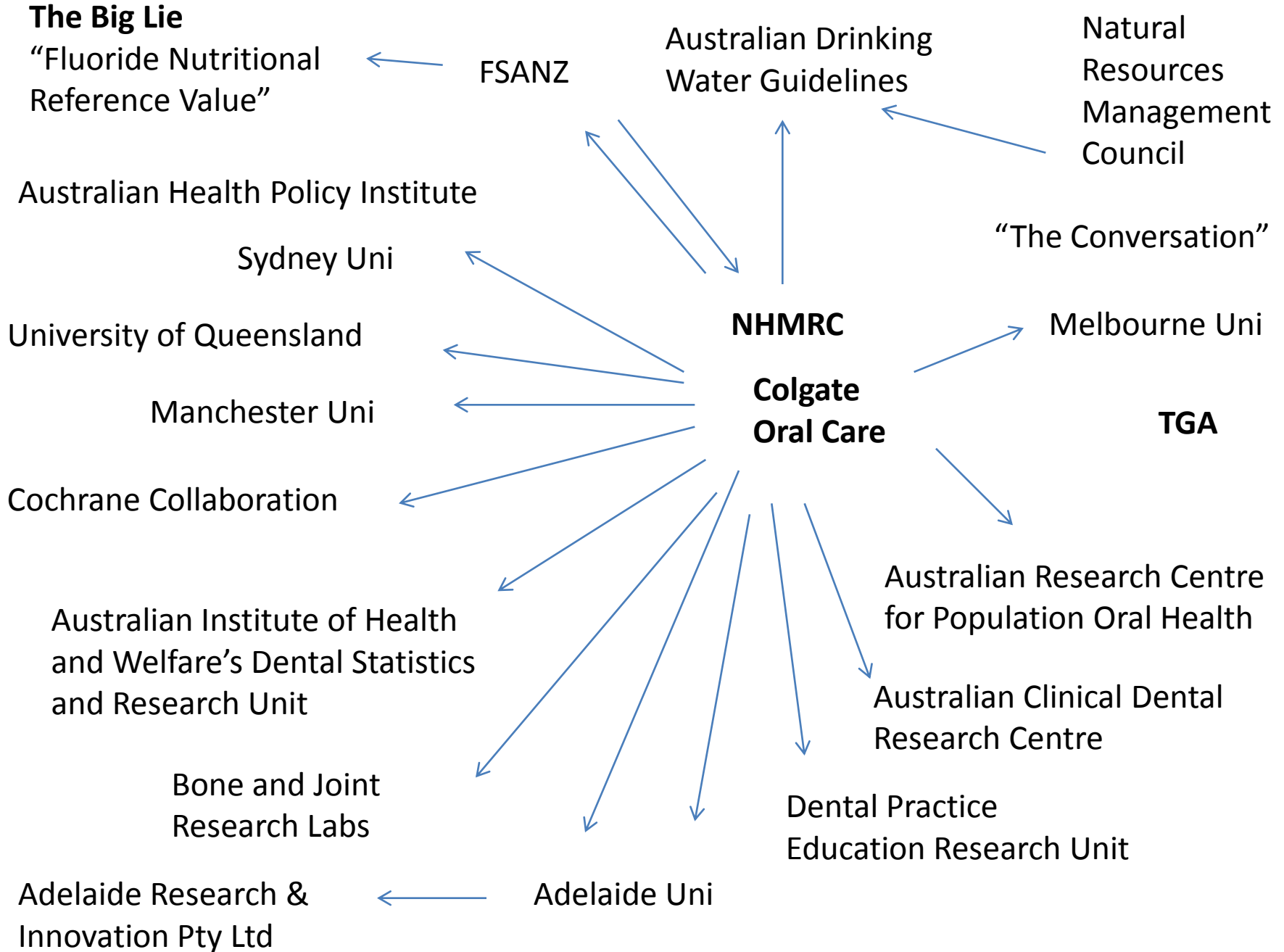
Fluoride damages muscle and connective tissue and accumulates in the **skin**



Cellulite recently linked to Fluoride



Fluoroderma recognized by Fluoride promoters for over 50 years. **Proven by placebo and challenge test.**



“The Big Lie – Fluoride Nutrient Reference Value”

NHMRC Nutrient Reference Values for Australia and New Zealand (NRVs 2006)

The NRVs note that fluoride intake from food sources are low in Australia. Foods generally have a concentration well below 0.05mg/100g. However, water in fluoridated areas generally has a higher concentration.

	Nutrient Requirement* (Adequate Intake)	Upper Level of Intake**
Adult Men	4mg/day	10mg/day
Adult Women	3mg/day	10mg/day

** This is based on the general requirement of 0.05mg/kg body weight/day and adjusted for standard body weights of 76kg for men and 61kg for women.*

*** This represents the highest average daily nutrient intake level likely to pose no adverse health effects to almost all individuals in the general population. As intake increases above the UL, the potential risk of adverse effects increases.*

The Commonwealth Department of Health and Ageing, New Zealand Ministry of Health and NHMRC have started a review of the 2006 NRVs with fluoride identified as a priority nutrient for review. These results are expected in early 2014.

Note: **Lethal dose** is as low as 5mg/kg = 350 mg for a 70 kg human. These fools think that a lethal dose shared by 35 people is OK.

10 mg is **300,000,000,000,000,000,000 atoms of Fluoride** toxin per day!

Therapeutic Goods Administration (TGA) – washes its hands

- “ The TGA is not currently reviewing recommended Fluoride intake for Australians”
- “ Fluoridated drinking water is not therapeutic goods (sic) within the definition of that term in the Therapeutic Goods Act 1989.”
- “ The Therapeutic Goods Administration thus has no role in regulating fluoridated drinking water”

Towns around Australia threatened with Fluoridation

Successful Community Resistance

Campaigns so far

Byron
Bundaberg
Burdekin
Cairns
Carnarvon
Cassowary
Charters Towers
Cherbourg
Cloncurry
Daylesford
Doomadgee
Fraser Coast
Maranoa
Mount Isa
North Burnett
Northern Peninsula
Paroo
Rockhampton
South Burnett
Tablelands
Weipa
Whitsunday
Yackandandah



No fluoride for Yack

By Lauren Salathiel

Local residents who have recently voiced opposition to the notion of the addition of fluoride to local water supplies were relieved when Indigo Shire Council announced at its October 27 meeting that no fluoride would be added to the water supply of Yackandandah, Beechworth, Rutherglen and Wahgunyah.

The decision followed a motion by Cr Bernard Gaffney at the previous council meeting, on September

29, requesting that council "commence a conversation" with North East Water, in regard to the addition of fluoride to the water of areas of the shire with reticulated water supply.

Chiltern, Kiewa, Barnawartha and Tangambalanga, which receive their water from Wodonga, already have fluoride in their supply.

At the September meeting, Cr Gaffney said he realised the issue could be an emotive one, and that wide community

consultation was required before any decision could be made.

Cr James Trenery began an informal consultation with the Yackandandah community on the town's Facebook page, receiving 85 contributions from local community members, the vast majority of whom were opposed to any such move.

Many contributors had strong feelings about the reported health impacts of adding fluoride to the water, and cited the

experience of European countries, which no longer fluoridate their water due to health concerns associated with the practice.

Others emphasised that they disliked the taste of fluoridised water, and asked that Yackandandah's water supply "be left as it is".

Novelly, one commentator asked that council perhaps consider adding shiraz to the water supply instead.

Watch this space for developments on that one...



Richard Di Natale ✓

@RichardDiNatale

 Follow

For what it's worth, I believe the science is settled on fluoridation and it poses no threat to anyone.

RETWEETS

38

LIKES

14



8:52 PM - 14 Jun 2013



Ken Jobling @rkjobling · 15 Jun 2013

@RichardDiNatale @HughRundle Fluoride is not safe for everybody. who.int/ceh/publicatio...



“Seriously, this crazy guy said, whether I agree or not, that he intends to use my bones as a waste dump for toxic **FLUORIDE**, by putting it in MY drinking water for me to consume for my entire life.”

**YOUR BODY
YOUR CHOICE**