

Est. 1979

Harrison County Gem & Mineral Society, Inc.



Volume 40

June 2019

Number 6



Gulfport Gems

Member of the American & Southeast Federation of Mineralogical Society

P.O. Box 10136
Gulfport, Ms. 39505

www.facebook.com/gulfportgems
Website: www.gulfportgems.org

A message from the President...

Dear Members,

I am so proud of all of you that helped with the show. We continue to improve each year. Laura, I heard so many people compliment our presence Facebook. Lynn, you did a superb job as always. I especially liked the rearrangement of the demo, Sharon, kids' corner and found room for USM and the dinosaur exhibit. It really worked well. There are too many things to mention everything but believe me all was noticed. We will discuss everything at the meeting.

If you have signs or other things that need to be put back in the storage unit, please bring them to the meeting so that they can be put away. Look forward to seeing everyone.

Thanks,

Sue West, President



Board Meeting

Gulfport Library - Old Hwy. 49

June 4th

Room Time: 1pm to 3pm

ALL CLUB MEMBERS WELCOME

If attending, contact Sue

I would like to thank everyone for helping with making the vendor lunch such a success. Everyone that I spoke to raved about the food. Thank you everyone who brought food. Even though there was a mix up and we had lots of potato salad, we donated all the extras to the Shriners. They served the extra at the snack bar over the weekend. Pearce appreciated our donation and said that they did well. Once again, thank you everyone who signed up for and brought food to the vendor lunch.

Laura Tate



Notes from the editor...

Wow, what a show! We did again, we broke our record at door attendance. The most tickets ever...705 to be exact. This does not include kids 10 and under or members. Thanks to all of the hard work by members who volunteered it was another successful year. Check out the pictures on pages 6 and 7, Facebook and our website.

Program

12:00 pm to 12:30 pm

Demo Machines

By Program Chairman, VP Buddy Shotts

* * * * *

*Contact Program Chairman
Vice President Buddy Shotts*



Harrison County Gem & Mineral Society April 20, 2019

CALL TO ORDER: Meeting called to order by President Sue West at 1:30 p.m.

Members in Attendance: 27

Vice President Buddy Shotts talked about Tucson, Arizona. The largest gem show in the world.

MEETING:

Minutes: The minutes of April 20, 2019 meeting. One correction: Aurora will be teaching a workshop in June rather than April. Karen Johnston moved to accept. Cindy Braden 2nd the motion. All were in favor. The motion passed.

Treasury Report: Given by Lynn Tate, Treasurer. In March we purchased a new cabbing machine. Lisa Fitch moved to accept. Cindy Braden 2nd the motion. All were in favor. The motion passed.

COMMITTEE REPORTS:

Facebook: Report Given by Lynn Tate in Laura Tate's absence.

Check often for updates about the show. Everyone is encouraged to share at this time in order to spread information, thus promoting the Gem & Mineral Show.

Field Trip: Report Given by Lynn Tate in John Clindard's absence:

Lynn Tate suggested a field trip to the Museum of Rocks at University of Southern Mississippi at Hattiesburg.

Newsletter: Report Given by Lisa Fitch, Editor. Lisa Fitch encouraged the club members to submit articles.

Website: Report Given by President Sue West in Kathy Becnel's absence:

President Sue West informed the club members that Kathy said that she would not be webmaster next year. Sue asked if anyone would consider volunteering to be our webmaster next year if they have the skills to hold that position.

Workshops: Report Given by President Sue West in Kathy Becnel's absence:

Due to the show in May, the next workshops will be in June. Sue West will be doing the Bicycle Earrings Project. Aurora King will be doing the other workshop.

COMMUNICATIONS: President Sue West got a text from Kathy & Tres Lennep. They will be in Australia until June. They will be visiting an opal mine.

Old Business: Merit-based scholarships for show and teaching were discussed. Printed guidelines were distributed. A vote was taken to determine if the guidelines would be voted on today. The vote was defeated. The guidelines discussion and vote will be tabled until June meeting.

New Business: We have a new cabbing machine. We have an informal ride sharing program for trips to William Holland Lapidary School. If you are going or need a ride, please bring it to the attention of the members.

All members are invited and encouraged to attend board meetings.

Show: Report Given by Lynn Tate, Show Chair: Setup is after 1:00 on Thursday, May 16. Friday, the doors will be open at 8:00 am. The luncheon starts around 11:00 on Friday. Please bring food by 10:30. Shopping bag giveaway to first 40 each day. 40th anniversary cupcakes, as well.

Karen Johnston is willing to do the 4:00 show and Sue West will contact channel 25.

Tom Bergeron from New Orleans Geological Society will be at show with dinosaur bones display. Geologist from University of Southern Mississippi will also be there.

Concession stand will be open.

Lynn Tate announced that there will be a surprise on Friday afternoon.

Display boxes available for members.

Seeking volunteers to work different areas.

Sign the attendance sheet in hospitality room at show. It will count towards yearly attendance recognition for scholarship purposes.

SPLIT THE POT: Won by Lifetime Member, Jessie Sisk

DOOR PRIZES: Leslie Jancovich, Lynn Tate, Nicole Green, Ed King, Clemencia Howe, Buddy Shotts, Reva Shotts, Barbara Saavedra, Rosalind Norvel-Daniels, Tammy Landry, Monica White, Lisa Fitch, Ellen Kirstein and Jessie Sisk.

ADJOURNMENT: Meeting adjourned 3:28 p.m. Motion to adjourn was made by Karen Johnston. It was 2nd by Ellen Kirstein. All in favor. The motion passed.

Happy Birthday



Cindy Easterling

Kathy Lennep

Shirley Robinson

Barbara Saavedra

Monica White



"I hope your birthdays

are as awesome as you are

and that all your

birthday wishes come true."

Happy Anniversary

*Gladys Dedeaux
Connie & Jim Walker
Sue West*



Thought of the Day . . .

*"Wherever there is a
human being
there is an opportunity
for kindness."*

Ice Cream Cone Cakes

By Betty Crocker.com

Prep: 10 Mins. **Total Time:** 1 hr. / 20 mins.
Serves: 24



Ingredients

- ♦ 1 box Betty Crocker™ Super Moist™ party rainbow chip cake mix (you can use white, yellow or chocolate cake mixes)
- Mix water, vegetable oil and eggs called for on cake mix box
- ♦ 24 flat-bottom ice cream cones
 - ♦ 1 to 2 containers Betty Crocker™ Rich & Creamy frosting (any flavor)

Steps

1. Heat oven to 350°F (325°F for dark or nonstick pans). Place paper baking cup in each of 24 regular-size muffin cups.
2. Make cake batter as directed on box. Divide batter evenly among muffin cups (two-thirds full). Place ice cream cone upside down on batter in each cup.
3. Bake 16 to 22 minutes or until toothpick inserted in cake comes out clean (cones may tilt on batter). Cool completely, about 30 minutes. Remove paper baking cups. Generously frost cake with frosting, and decorate as desired. Store loosely covered.

Expert Tips

- ♦ After frosting, enjoy a downpour! Sprinkle frosted cone cakes with any of the following: breakfast cereal, animal crackers, dried fruit, candy sprinkles, crushed hard candies, graham cracker crumbs, granola, mini chocolate chips or chopped nuts.
- ♦ Vary the flavor of your cake cones by using other varieties of Betty Crocker® cake mix. You could also try different flavors of flat-bottom cones.
- ♦ Help steady Ice Cream Cone Cakes on a serving plate by putting a small amount of frosting on the cone bottom; lightly press cone onto plate.

WORKSHOPS

Workshop Chairman:
kgbecnel@gmail.com

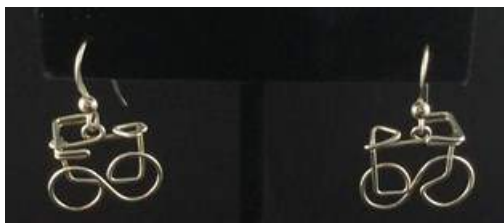
June 15, 2019

Kathy Becnel
228-342-0716

Bicycle Earrings

By Sue West

* * Kits Available \$7.00 * *



Supplies:

32 inches ss/gf/copper Round 20 ga. wire
2 dowel rods 1/4 inch x 3 inches
2 dowel rods 3/8 inches x 6 inches
Masking tape
Two pairs of ear wires

Tools:

Wire Cutters
Mat
Ruler/Tape Measure

Workshop Limited to 10 students

Cabbing Workshops

If you are interested in cabbing we have instructors available to teach you. Time may be limited if other members are waiting to use the machines.

- ♦ \$3.00 per Day for equipment usage
- ♦ Must be a member (waiver on file)
- ♦ Guest not allowed to use equipment

Contact Equipment Chairman
Cindy Braden - 706-266-0221



Angle Weave Ring Part 2

By Laura Tate

* * Kits Available w/limited colors of stone* *



Supplies:

Wire is Argentum Except Snap-set is Sterling Silver.
25" of 22 gauge square dead-soft wire
25" of 20 gauge half-round half-hard wire
1 setting ss 6mm round 6-prong snap-set (Rio Grande 614468)
1 - 6mm round faceted stone for snap-set
(wirejewelry.com E5-16E (emerald green))
6 - 2,3 or 4 mm Argentum beads

Tools:

Wire Cutters	Tape
Tape measure	Ring mandrel
Flat-nose pliers	Fine chain-nose pliers
Pin Vise	Rawhide or nylon mallet

Workshop Limited to 10
& only to those who took the
1st workshop July 2018

I will try to have 2 ring mandrels and a ring sizer.

Upcoming 2019 Workshops

July - Beaded Watch & Earrings (Lisa F.)
Bead Crochet (Aurora K.)

August - Chainmaille - Kathy B.

SEE OUR WEBSITE & FACEBOOK PAGES



MEETINGS WEEKLY



Meetings / Workshops

Herbert Wilson Recreational Center
3625 Hancock Avenue
Gulfport, Ms. 39501

3rd Saturday of each month

9 am - 12 pm Workshop
12 pm - 12:30pm Program
12 pm - 1 pm Lunch
1 pm - 2 pm Meeting

Directions: Coming from Pass Road or Highway 90 turn on Courthouse Road. Turn next to Hancock Bank on 33rd Street until you reach Hancock Street. Look to your left and you will see the Herbert Wilson Recreational Center. We are on the left side of building thru the gates.

Come for fun . . . Stay to play!

Visit our Website and Facebook page:

www.gulfportgems.org or
<https://www.facebook.com/gulfportgems>

Workshops are offered free!

Next Meeting & Workshop

June 15th

Visitors are always welcome

Please bring a guest. . .

2 Workshops this Month

Membership Dues

Single \$20.00 - 18 years old
Family \$30.00 - 2 adults and all minors under 18 yrs. old at the same address
Junior \$10.00 - Sponsored by an adult

Application on website & newsletter

Dues deadline - 3rd Saturday of January

See Lynn Tate, Treasurer



Name Tags - \$7.00

Shirts - available and cost is based on sizes

Please see Ellen Kirsten 413-668-6934

2019 MEETING DATES

Jan 19	May 18 & 19 SHOW	
Feb. 16	June 15	Sept 21
March 16	July 20	Oct 18
April 20	Aug 17	Nov 16
Dec 21 Christmas Party		

Nearby Gem Societies



Ms. Gulf Coast Gem & Mineral Society

www.mgcgms.com

Meeting: 2nd Saturday of the month



Mobile Rock and Gem Society

www.mobilerockandgem.com

Meeting: 2nd Tuesday of the month



Gem & Mineral Society of Louisiana

Meeting: 2nd Monday of the month

Contact: Levette @ 504-214-3205

Other Interests:

International Society of Glass Blowers

Website: www.isgb.org

Visit site if you like Lampworking



Dixie Mineral Council

<http://www.amfed.org/sfms/index.html>

40th ANNUAL GEM, MINERAL & JEWELRY SHOW



Front Desk, Door Prizes, Vendor Lunch and Kids' Corner.



Scott sets my large Citrine (Lisa Fitch)



40th ANNUAL GEM, MINERAL & JEWELRY SHOW



Our displays looked awesome! Demonstrators and Stump the Expert.



Dinosaur display was liked by all!



Bits, Tips and Tricks

HOW TO MAKE STERLING SILVER EAR CUFFS

No piercings necessary! Feel free to add dangles, whatever whimsy appears to you, or craft wire for school colors!

MATERIALS:

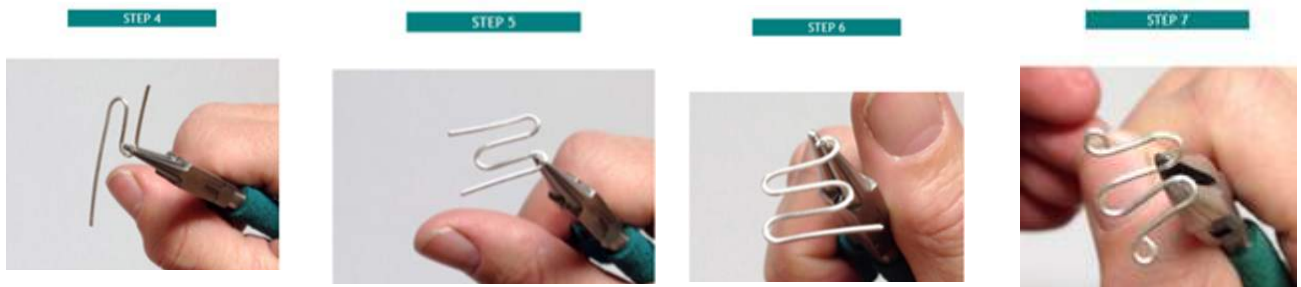
Sterling Silver 20 gauge round wire
#0000 steel wool

TOOLS:

WUBBERS Medium Bail Making Pliers
Chain Nose Pliers
Round Nose Pliers
File or Emery Board
Safety glasses
Flush cutters
Rawhide mallet



- 1.) Flush cut both ends of a 2-1/2" piece of 20 Ga. wire.
- 2.) Clean the wire with steel wool to remove any tarnish/blemishes.
- 3.) Using the tip of the Round Nose Pliers, fold the wire exactly in half.



- 4.) 1/2" down on outside loop, use the Round Nose Pliers to fold a loop in reverse.
- 5.) Repeat Step 4 on the opposite side. The piece now resembles the letter W.
- 6.) On the outside end, use Round Nose Pliers to make a single loop facing outward. Repeat on opposite outside wire.
- 7.) Use Chain Nose Pliers to squeeze coils a little closer together and tighten up the design.



- 8.) Hold the center of the flat piece between the jaws of the Wubbers and squeeze firmly.
- 9.) Bend the piece into the shape of the letter C using the rawhide mallet to firm up the curves on both sides.
- 10.) Check for sharp edges on the loops or spirals, and finish with a small file or emery board.

Wear with pride! How about expanding this basic design by adding spirals or dangles.

Alexandrite

FACTS

- **Mineral:** Chrysoberyl
- **Chemistry:** BeAl_2O_4
- **Color:** Bluish green in daylight, purplish red in incandescent light
- **Refractive Index:** 1.746 to 1.755
- **Birefringence:** 0.008 to 0.010
- **Specific Gravity:** 3.73
- **Mohs Hardness:** 8.5

Anniversary: 55th

Alexandrite, with its chameleon-like qualities, is a rare variety of the mineral chrysoberyl. Its color can be a lovely green in daylight or fluorescent light, changing to brownish or purplish red in the incandescent light from a lamp or candle flame. This is a result of the complex way the mineral absorbs light. Other gems also change color in response to a light-source change, but this gem's transformation is so striking that the phenomenon itself is often called "the alexandrite effect."

Often described as "emerald by day, ruby by night," alexandrite is the very rare color-change variety of the mineral chrysoberyl. It's now found in Sri Lanka, East Africa, and Brazil, but fine material is exceptionally rare and valuable.

It is also a strongly pleochroic gem, which means it can show different colors when viewed from different directions. Typically, its three pleochroic colors are green, orange, and purple-red. However, the striking color change doesn't arise from the gem's pleochroism, but rather from the mineral's unusual light-absorbing properties. To form, alexandrite requires both beryllium (Be), one of the rarest elements on Earth, and chromium (Cr). (These are also required for emerald creation). However, these elements rarely occur in the same rocks or in geological conditions where they interact. Furthermore, the original source of alexandrites was almost exhausted after only a few decades of mining. Since the 1980s, more sources have been located.



Pearls



FACTS

- **Mineral:** Calcium Carbonate
- **Chemistry:** CaCO_3
- **Color:** White, black, gray, yellow, orange, pink, lavender, green, blue
- **Refractive Index:** 1.52-1.69
- **Specific Gravity:** 2.60-2.85
- **Mohs Hardness:** 2.5-3.0

Anniversaries: 1st, 3rd, 12th, and 30th

Pearls are the only gemstones made by living creatures. Mollusks produce pearls by depositing layers of calcium carbonate around microscopic irritants that get lodged in their shells—usually not a grain of sand, as commonly believed. While any shelled mollusk can technically make a pearl, only two groups of bivalve mollusks (or clams) use mother-of-pearl to create the iridescent "nacreous" pearls that are valued in jewelry. Pearls don't require any polishing to reveal their natural luster.

The name "pearl" comes from the Old French *perle*, from the Latin *perna* meaning "leg," referencing the leg-of-mutton shape of an open mollusk shell. Because perfectly round, smooth natural pearls are so uncommon, the word "pearl" can refer to anything rare and valuable.

The rarest, and therefore most expensive, pearls are natural pearls made in the wild. The majority of pearls sold today are cultured or farmed by implanting a grafted piece of shell (and sometimes a round bead) into pearl oysters or freshwater pearl mussels.

Pearls are very soft, ranging between 2.5 and 4.5 on the Mohs scale. They are sensitive to extreme heat and acidity; in fact, calcium carbonate is so susceptible to acid that pearls will dissolve in vinegar.

The finest pearls have a reflective luster, making them appear creamy white with an iridescent sheen that casts many colorful hues.

Cultured freshwater pearls can also be dyed yellow, green, blue, brown, pink, purple or black.

Black pearls—which are mostly cultured because they are so rare in nature—aren't actually black but rather green, purple, blue or silver.



Moonstone

FACTS

- **Mineral:** Feldspar
- **Chemistry:** KAlSi_3O_8
- **Color:** Colorless to White, Gray, Green, Peach, Brown
- **Refractive index:** 1.518 to 1.526
- **Birefringence:** 0.05 to 0.008
- **Specific gravity:** 2.58
- **Mohs Hardness:** 6.0 to 6.5



Anniversary: 13th

Moonstone is a variety of the feldspar-group mineral orthoclase. Composed of two feldspar minerals, orthoclase and albite. At first, the two minerals are intermingled. Then, as the newly formed mineral cools, the intergrown orthoclase and albite separate into stacked, alternating layers.

Feldspars are the most widespread minerals in the earth's crust, as well as some of the most diverse. You can pick up a rock anywhere in the world, and you'll probably find that it contains a mineral or two from the feldspar group.

When light falls between these thin, flat layers, it scatters in many directions, producing the phenomenon called adularescence. Adularescence is the light that appears to billow across a gemstone, giving its surface a glowing appearance. The most captivating aspect of adularescence is its appearance of motion. The misty light seems to roll across the gem's surface as you change the viewing angle.

Other feldspar minerals can also show adularescence. One is a labradorite feldspar found mainly in Labrador, Canada. Another labradorite—found in Madagascar—has a multicolored adularescence over a light bodycolor. It's known in the trade as rainbow moonstone, despite the fact that it's actually a variety of labradorite rather than orthoclase.

Sanidine is another feldspar mineral that can include adularescent gems called moonstones. To be called moonstone, a mineral's actual identity is not as important as the beauty of its adularescence.

History & Lore . . . Legends say that moonstone brings good luck. Many believed that you could see the future if you held a moonstone in your mouth during a full moon.

Adularescent moonstone was once called "adularia." The name originated with a city in Switzerland, Mt. Adular (now St. Gotthard), that was one of the first sources of fine-quality moonstone.



“In The Spotlight”

Largest Alexandrite



It's available. . .

Up for grabs in Colombo is the world's largest 'Alexandrite' – weighing **429.60 carats**. The going price is Sri Lankan Rupees 600 Crore (one hundred crore equals one billion). The owner expects a little more if he wants to part with his precious possession. And it is expected that the owner might settle for some SLR 650 Crore for this Alexanderite, a find from Ratnapura, the City of Gems in Southern Sri Lanka.

How the present owner came to possess the Alexandrite is unclear, more so as he prefers to remain anonymous but what is undisputed is that the gem has been named Alexandrite.

The chemical elements beryllium (a major constituent in chrysoberyl) and chromium (the colouring agent in alexandrite) have contrasting chemical characteristics and do not as a rule occur together, usually being found in contrasting rock types. Not only has Nature brought these contrasting rock types into contact with each other, but a lack of the chemical element silica (the second most common element in the Earth's crust) is also required to prevent the growth of emerald. This geological scenario has occurred only rarely in the Earth's history and, as a result, alexandrite crystals are very scarce indeed.

In 1987, Alexandrites were discovered at Hematita, Minas Gerais, Brazil that have colour change capability. Soon the place has emerged as one of the most important deposits of Alexandrite in economic terms. The Tunduru area in southern Tanzania has also produced some outstanding specimens since the mid-1990s. Alexandrites are also found in Sri Lanka, India, Burma, Madagascar and Zimbabwe.

Expert view is that the colour of the Brazilian stones is not as strong a green as that of Russian alexandrite, but the colour change is clearly discernible. The Sri Lankan Alexandrite appears green in daylight and a brownish red in artificial light.

The vast majority of Alexandrite are under one carat. Upto one carat, the going price is said to be \$15,000. Over one carat, the price varies from \$ 50,000 to \$70,000 per carat though price has reportedly not been fixed for an Alexandrite above 10 carats.

FIELD TRIPS



Dixie Mineral Council Field Trips

The Southeast Federation of Mineralogical Societies, Inc



The Friendly Federation - Founded in 1976 to serve
DMC Program of the SFMS Field Trip Committee
Copyright © All rights reserved.

An Official Field Trip of the Henderson County Gem and Mineral Society
Hendersonville, NC

Friday, June 21, 2019

Meet at 9:00 AM Eastern Time At site from 9 AM to 5 PM

Thermal City Gold Mine

5240 US 221 North Highway, Union Mills, NC 28167

Limit 35 People

Registration Required

Fee: \$10 per person site fee

TRIP: A unique experience, family-friendly and hosted by people who are real prospectors! Anyone who wants to pan or prospect for gold is welcome. Here you can learn about and enjoy the tradition and history of gold mining in North Carolina. Lots of other NC gems and minerals to find, see or buy. Camping available and a shop to buy rockhounding equipment.

COLLECTING: The material from the site or river bed will be easy to work with, and we're hoping for a nice, hot day to enjoy the water. Comfortable, covered flume areas for sluicing. Other possible finds common to this area of NC include: moonstone, emerald, citrine, aventurine, smoky quartz, tourmaline, ruby, etc. You will have assistance if needed to identify your finds.

BRING: Screens and pans are available with your \$10 day fee, but for river prospecting please bring your own equipment. A sluice of your own can be set up in the river. If you're more experienced or want a LOT of material, the site has 4 high bankers they will load, or bring your own equipment and save \$10 a load. Cost is \$60 per load or \$70 for screened material when using site's equipment. Share the cost with a few friends!

REQUIREMENTS: Because this site is public and set up for all ages to enjoy, just the basic requirements for your particular group's safety and comfort. We should always have beverages/water, sunscreen/hats, sturdy shoes and the like but no hiking is required. In the water, use safety and move carefully. We will have a first-aid kit and some bottled water.

SPECIAL CONDITIONS: If you choose to pan for gold in the river, you must use your own equipment. Check the website for more options. Fee: \$10.00 per person for the day.

REGISTRATION: Trip size will be limited to 35 persons. Please register so we have a head-count and can contact anyone on a wait list. Email: Kathryn Hackett Fields at Kahfields@Reagan.com, subject line: HCGMS Field Trip. If you can "ride share" one or more from the meeting place to the site, please include that. Can also register at HCGMS monthly Club meeting, May 20 or June 17 (if not full by then). The Thermal City Gold Mine website is your best source for comprehensive information, and for camping details/costs. You can also call Tim Barton, 828-577-4505.

CHILDREN (Yes): The site encourages "ages 3 to 93" and adult supervision appropriate to ages. The flume is covered allowing fun rain or shine.

PETS (No): Best left safely and comfortably at home; not allowed when camping.

FACILITIES: Facilities are adequate for a group, and there is a museum and rock shop as well as a wide variety of equipment for purchase. Picnic tables and beautiful surroundings.

FEE: \$10 per person. There may be additional fees depending on equipment and material desired.

ADDITIONAL INFORMATION: The Club will bring bottled water, some ice and morning snacks along with a few folding tables and coolers for lunch bags. Bring your lunch, and enjoy the many area offerings after your day.

DIRECTIONS AND WHERE TO MEET: Our meeting place and registration check-off will be the Ingles at 550 Rt. 9 in Black Mtn. area. Look for green Subaru Forrester with a balloon to find the spot. This location is about 30 miles from the site. Ride-sharing can be done at this point to have less vehicles on-site.

Take the NC-9 exit # 64 off of I-40 East (Montreat/Black Mtn.), go .24 miles then turn right onto NC Hwy. 9/Black Mtn., up another .2 miles and see Ingles on the right. We will wait there from 9 - 9:25 a.m. before leaving for the site by 9:30. Thermal City Gold Mine is about another 21 miles down I-40 East, Exit 85, then US 221 South for 8.76 mi.

CONTACT: Tim Barton may be contacted for general information and meeting place location at 828-577-4505. Day-of-trip contact phone is 828-231-3555, text or call Kathryn, (Trip Registrant).

IMPORTANT: DMC field trips are open only to members of clubs within the SFMS that have provided their members with field trip liability insurance.

EMERY BOARDS

The sanding boards for doing your nails are one of my favorite finishing tools. I use the ones with a thin foam core. They have enough resistance to sand just the high points off a flat surface and yet give a little when you're trying to smooth off a curved surface.

Plus they're inexpensive and come in a variety of grits. Some grits are so fine they give an almost finished surface. Pick up a few at a beauty supply company or at your local drug store.



DENTAL FLOSS

When testing the fit of a stone in the bezel, it's all too easy to get it stuck. If tapping the finding or opening up the bezel a bit with a knife blade doesn't dislodge it, you might have to drill a small hole in the bottom and push it out with a needle.

To avoid all this frustration, use the old dental floss trick. Lay a piece of over the top of the bezel before you seat the stone. Then just pull on the string to remove the stone.



Be More Productive With Brad's "How To" Books
[Amazon.com/author/bradfordsmith](https://www.amazon.com/author/bradfordsmith)

www.bradsmithjewelry.com

Articles are copyrighted by Brad Smith



S.F.M.S. Newsletter

Subscription to Lodestar is FREE electronically

Email: sfms.lodestar@gmail.com Or

Editor: john@rasmussengems.com

Can be read online:

<http://www.amfed.org/sfms/index.html>

www.amfed.org

William Holland

June 9th, 2019 – June 14th, 2019

For more information go to

www.sfmsworkshops.org we will be updating the website soon to include registration and payment but for now you can mail your registration form and \$50 Deposit to:

SFMS Workshops

c/o Warren Ratcliff, WH Registrar

420 S. Oak Ave

Bartow, FL 33830

(Make check payable to SFMS Workshops)

Warren (Teddy) Ratcliff, WH Registrar

Warren.Registrar@yahoo.com

(941) 545-4728

Kristine Robertson, WH Director

Kristine@kmarella.com,

(863) 640 - 2887

Remember to book your classes early as possible as they fill up fast. Classes are subject to change. Please verify your confirmation for your classes before you leave.

Most importantly - have fun and enjoy yourself. Eat well, they have good food.



A.F.M.S. Newsletter

Subscriptions are \$4.50 per year

Checks should be made payable to "AFMS"

AFMS Central Office

Steve Weinberger

PO Box 302

Glyndon, MD 21071-0302

central_office@amfed.org PH: 410-833-7926

AFMS 2019 Annual Convention

Held in Cedar Rapids, IA

Meeting TBA 2020

A.L.A.A.

Have you joined the **American Lands Access Association** (ALAA)? Help is needed. Please volunteer!

The organization was founded to promote and ensure the right of the amateur hobby collecting, recreational prospecting and mining, and the use of public and private lands for educational and recreational purposes and to carry the voice of all amateur collectors and hobbyists to our elected officials, government regulators and public land managers.

Individual dues are \$25 per year; clubs \$50 per year.

A quarterly newsletter is sent to all members.

For more information,

Visit <http://amlands.org>

Shirley Leeson, President





Southeast Federation Classes



William Holland School of Lapidary Arts 706-379-2126

Website @ www.lapidaryschool.org

Classes are April - Nov 2019
Federation Week June 9, 2019

WILDACRES RETREAT 828-756-4573

Website @ www.wildscres.org

When scheduling keep in mind, workshops are subjected to change without notice.

Please check the website for changes.

William Holland June 9th, 2019 – June 14th, 2019

For more information go to www.sfmsworkshops.org we will be updating the website soon to include registration and payment but for now you can mail your registration form and \$50 Deposit to:

SFMS Workshops
c/o Warren Ratcliff, WH Registrar
420 S. Oak Ave
Bartow, FL 33830

(Make check payable to SFMS Workshops)

Warren (Teddy) Ratcliff, WH Registrar
Warren.Registrar@yahoo.com
(941) 545-4728

Kristine Robertson, WH Director
Kristine@kmarella.com,
(863) 640 - 2887

- ♦ Beading
- ♦ Cabochons I
- ♦ Casting
- ♦ Chain – Loop n Loop
- ♦ Electro-Etching/Wood Inlay
- ♦ Metal Manipulation/ Cold Connection
- ♦ Opals II – Carving
- ♦ Silver 2 – Fused
- ♦ Silver I
- ♦ Silver-Wear I & II
- ♦ Wire II – Bracelets Only

Wildacres 2019 Federation Weeks

August 19-25 2019 sfmsworkshops.com

- ♦ Cold Connections Morning Sherrod
- ♦ Beginning Casting Bill Harr
- ♦ Wire Wrap Rowan Rose Morgan
- ♦ Special Projects Jeff Sheer
- ♦ Cabochons Buddy Shotts
- ♦ Beg. Chain/Fusing Roy Deere
- ♦ Layered Colored Pencil Mary Karg
Jewelry on metal

September 16-22 2019 sfmsworkshops.com

- ♦ Silver 1 Pattie Appleby
- ♦ Gem ID Teresa Polly
- ♦ Adv. Casting Bill Harr
- ♦ Stone Inlay Chuck Bruce
- ♦ Beg. Chain/Fusing Roy Deere
- ♦ Metal Clay Judi Talley
- ♦ Cold Connections Morning Sherrod
- ♦ Electro-etch wood inlay Micah Kirby

We look forward to seeing you at Wildacres this coming year for our lapidary workshops.

INTERNATIONAL EXPOSITION OF AGATE

JUNE 6, 7, 8, 9 - 2019

PRESENTED BY
NATURE'S TREASURES OF TEXAS

THE NORRIS CENTER

2525 WEST ANDERSON LANE, AUSTIN, TX 78757

For more information or if you wish to participate email austinagates@ntrocks.com

MANY INTERNATIONAL AGATE COLLECTORS, AUTHORS AND MINERS

**10:00 AM - 6:00 PM THURSDAY,
FRIDAY & SATURDAY**

10:00 AM - 5:00 PM SUNDAY

INCLUDING SPEAKERS ON:

- Agate in Dino bone, from Australia, Germany and Morocco.
- A talk about trips to China and acquiring Fighting Blood Agate.
- An overview of mining Moctezuma agate in Mexico, Kentucky agate, Russian agate, Union Road agate and more!

**LOTS OF FAMILY
AND YOUTH ACTIVITIES!**

- **SATURDAY AUCTION** for raising funds for the Susan G. Comen Austin foundation to fight breast cancer. This event is open to the general public.

- **WEDNESDAY VENDOR AND EXHIBITOR SETUP** will include Texas BBQ! There are booths still some available booths for the show!



Nature's Treasures

4103 N. INTERSTATE 35 AUSTIN, TEXAS 78722

For more information folade@ntrocks.com www.ntrocks.com

Shows and Events

Alabama Mineral & Lapidary Society

The 46th Annual Tannehill Gem, Mineral, Fossil, & Jewelry Show

June 1st & 2nd, 2019 Time: 9am-5pm Tannehill Ironworks State Park

The show is FREE with paid admission to the park. So pack a lunch and

Take I-20/59 to Exit #100 or I-459 to Exit #1 and follow the signs.

For more information contact Cathy Kellogg at tannehillgemshow@gmail.com or see our show pages on the web at <https://lapidaryclub.com>. The AMLS meets the 2nd Friday of each month at the Cahaba Heights United Methodist Church, Cahaba Heights, AL. at 6:30 p.m.

International Exposition of Agate **June 6, 7, 8, & 9th Austin Texas**

The 4-day Exposition will feature scores of Vendors, Speakers, Exhibits and Collectors from around the world! Agates from diverse locales, including Australia, Russia, Argentina, Germany, Mexico, Africa and elsewhere, will be on sale. Minerals, jewelry, fossils, and lapidary equipment and supplies will also be available. Book signing from famous authors too!

Exhibits of private, never-before-seen agate collections will be on display, some in public for the first time.

These curated exhibits will include Laguna, Chinese Fighting Blood, Lake Superior, Thunder Egg, Purple Passion, dinosaur fossil agates, and many more, including colorful and rare agates from many different countries. These Exhibits represent hobbyist enthusiast and highly valued investments for agate collectors.

SEE FLYER ON PREVIOUS PAGE

Visit Website for all Information: <https://ntrocks.com/international-exposition-of-agate>

Gaston Gem & Mineral Society

June 21st, 22nd and 23rd, 2019 Friday and Saturday: 9 – 6pm, Sunday: 9 – 4pm

Gaston VFW Absher-Flowers Post 9337, 3250 W Franklin Blvd, Gastonia, NC 28052

FREE Admittance / Minerals and Fossils from around the world

Cutting material, Quality Gemstones, Wire wrapping, settings, Geodes, Jewelry, etc.

SLUICE a real working sluice, \$3, \$5 and \$10 buckets; perfect for children & adults.

you just might get that special stone or treasure! Hourly Raffles for Prizes

FOR A COMPLETE LIST OF SHOWS VISIT - amfed.org

AKS GEM SHOW Presents New Orleans Bead & Jewelry Show

Pontchartrain Center, 4545 Williams Blvd., Kenner, La. 70065

Admission Fee \$5.00 Hours: Fri & Sat 10am-6pm / Sun 10am-4pm

Email info@aksshow.com with inquiries Phone: 504-265-8830 Visit website www.aksshow.com

GET A COUPON FOR \$1.00 OFF Admission

**2019 Dates: January 25th - 27th Winter Show / April 5th - 7th Spring Show
July 12th - 14th Summer Show / September 6th - 8th Fall Show / November 1st - 3rd Xmas Show**



Harrison County Gem & Mineral Society Information



Officers 2019

<u>President</u> - Sue West	(228) 831-2294
<u>Vice President</u> - Buddy Shotts	(601) 947-7245
<u>Secretary</u> - Nicole Green	(228) 344-8066
<u>Treasurer</u> - Lynn Tate	(228) 342-2963
<u>Directors</u>	
Laura Tate (1 yr.)	(228) 342-2971
Kathy Becnel (2 yr.)	(228) 342-0716
John Clinard (3 yr.)	(601) 766-3786

Committee Members

<u>Facebook Chairman</u>	
Laura Tate	(228) 342-2971
<u>Field Trip Chairman</u>	
John Clinard	(601) 766-3786
<u>Librarian Chairman</u>	
Arvid Coole	(601) 723-1412
<u>Newsletter Editor</u>	
Lisa Fitch	(228) 467-4684
<u>Sunshine & Hospitality Chairman</u>	
Clemencia Howe	(228) 822-2184
<u>Show Chairmen</u>	
Lynn Tate	(228) 342-2963
<u>Webmaster & Workshop Chairman</u>	
Kathy Becnel	(228) 342-0716
<u>Assistant Webmaster</u>	
Leslie Jancovich	(859) 321-5692
<u>Equipment Chairman</u>	
Cindy Braden	(228) 467-5198

Southeast Federation of Mineralogical Societies

<u>Ms. State Director, Parliamentarian & Boundaries</u>	
Buddy Shotts	(601) 947-7245
<u>Past President</u>	
John Wright	(228) 875-9192
<u>Constitution / By-Laws</u>	
Lisa Fitch	(228) 467-4684

Field Trips

John Clinard

We are now members of the Dixie Mineral Council. You can attend any DMC Field Trips. It will be posted in each newsletter. Because of insurance requirements the general public are NOT invited to any field trips.

601-766-3786

jclinard173@att.net



Website

Kathy Becnel

Take the time and visit our website for the latest information and workshops. Submit articles and pictures to our webmaster.



<http://www.gulfportgems.org/>
kbecnel@gmail.com



Facebook

Laura Tate

Please visit our Facebook page to view all the latest news and information on our club and workshops. To post club information contact:

Laura Tate at wanderingmsrn@gmail.com



Library

Arvid Coole



The club has some interesting material available for viewing. Please contact Arvid to check out material from our Library. Be sure to return the material in a timely matter in order to share with other members.

Arvid Coole (601) 723-1412

Newsletter Editor

Lisa Fitch

Submit newsletter articles to:

Lapidaryarts@hotmail.com



Copyright 2019 Harrison County Gem & Mineral Society Newsletter known as Gulfport Gems. All rights reserved. Except for items that are specifically copyrighted by their authors, all materials in this bulletin may be freely copied. Please give credit to Gulfport Gems. Unless otherwise credited, articles are by the editor.

Articles and minutes are due by the last day of each month



Membership Form

Contact Our Treasurer: Lynn Tate (228) 342-2963 **Email:** l.tate4@gmail.com



HARRISON COUNTY GEM & MINERAL SOCIETY, INC. MEMBERSHIP APPLICATION			
APPLICANT INFORMATION			SINGLE \$20.00
18 YEARS OF AGE			
Name:		Email:	
Date of birth (Mo/Day):	Anniversary: (Mo/Day)	Cell Phone:	
Current address:		Home Phone:	
City:	State / Zip Code:	Work Phone:	
CO-APPLICANT / SPOUSE INFORMATION			FAMILY \$30.00
TWO ADULTS & ALL MINORS UNDER 18 YEARS OF AGE/AT SAME ADDRESS			
Co-Applicant / Spouse:		Email:	
Date of birth (Mo/Day):	Cell Phone:	Work Phone:	
JUNIOR INFORMATION			JUNIOR \$10.00
UNDER 18 YEARS OF AGE ★ SPONSORED BY AN ADULT			
Name	Birthday (Mo/Day/Year)	Relationship:	
Name	Birthday (Mo/Day/Year)	Relationship:	
Name:	Birthday (Mo/Day/Year)	Relationship:	
Name	Birthday (Mo/Day/Year)	Relationship:	
★ EMERGENCY CONTACT INFORMATION ★			
Name:			
Relationship:	Home Phone:	Cell Phone:	
INTEREST INFORMATION			
Hobby Interest:		Jewelry Interest:	
(Each applicant initial interests)			
<input type="checkbox"/> Fossils <input type="checkbox"/> Minerals <input type="checkbox"/> Lapidary (<input type="checkbox"/> Cabbing, <input type="checkbox"/> Faceting, Etc.) <input type="checkbox"/> Field Trips (Creeks, Gravel pits, Mines, Etc.) <input type="checkbox"/> Special Interests _____		<input type="checkbox"/> Beading <input type="checkbox"/> Kumihimo <input type="checkbox"/> Pearl Knotting <input type="checkbox"/> Other _____	
		<input type="checkbox"/> Wire Wrapping <input type="checkbox"/> Chainmaille <input type="checkbox"/> Silversmithing	
APPLICATION FEES			
Applications can be mail to: Harrison County Gem & Mineral Society P. O. Box 10136, Gulfport, Ms. 39505			
Single \$20.00	Family \$30.00	Junior(s) \$10.00 Each	DUES: \$
Dues: <i>Circle One</i> NEW RENEWAL No Proration Deadline: 3rd Saturday of January			TOTAL: \$
SIGNATURES			
How did you hear about our society? _____			
I authorize HCGMS to use my picture or likeness for society promotions? YES or NO			
I authorize HCGMS to include my information in society listings for members only? YES or NO			
Signature of applicant:		Date:	
Signature of co-applicant/spouse (only if for a family membership):		Date:	
*Newsletter will be sent via email @ no charge		Modified 11/20/17 LF	

Our goal is to promote, educate and stimulate interest in the earth sciences and lapidary arts context.



Gulfport Gems, Editor
P O Box 10136
Gulfport, MS 39505

Address Service Requested



THE OFFICIAL PUBLICATION FOR THE HARRISON COUNTY GEM & MINERAL SOCIETY, INC.