

Est. 1979

Harrison County Gem & Mineral Society, Inc.



Volume 40

April 2019

Number 4



Gulfport Gems

Member of the Southeast Federation of Mineralogical Society

P.O. Box 10136
Gulfport, Ms. 39505

www.facebook.com/gulfportgems
Website: www.gulfportgems.org

A message from the President...

Dear Members,

April is the last month before the show. Please plan to be at the meeting. We need everyone's help with the final preparations for the show. Hope to see all of you there.

Thanks,

Sue West, President



Notes from the editor . . .

Showtime Everyone!

Your name tags and shirts will be handed out at this meeting. Don't forget to get post cards, signs, and display cases to fill.

Most Importantly . . . Please volunteer and put your name on the sign-up sheets. There is something for everyone to do at the show.

Board Meeting

Gulfport Library - Old Hwy. 49

April 16th

Room Time: 1pm to 3pm

ALL CLUB MEMBERS WELCOME
If attending, contact Sue

Program

12:00 pm to 12:30 pm

Hook Earrings

By President Sue West

* * * * *

Contact Program Chairman
Buddy Shotts

Harrison County

PRESENTS

40th Annual Gem & Jewelry

May 18 & 19, 2019

Saturday

9 –5pm

Adults - \$5.00 / Kids age 10 & under - Free

*** Door Prizes Hourly ***

Sunday

9 –4pm



Joppa Shrine Temple

13280 Shriners Blvd. Biloxi, Ms.
North of I-10 / Woolmarket Exit # 41



Jewelry * Rocks * Gems * Beads * Fossils * Minerals



Bring Flyer for \$1.00 Off

Displays

Exhibits

Kids Corner

Stump
the
Expert!

Demonstrations

Gem & Mineral Society



Visit our Website: www.gulfportgems.org or Facebook at www.facebook.com/gulfportgems

"The Golden Ticket"



Volunteers Needed! This is our one big fundraiser of the year and we need members to volunteer to help with the show.

Sign-up sheets will be available for the show at the April meeting.

You can help support your society which provides free workshops for our members and their guest along with scholarships that are awarded yearly from the profits of the annual show.



We are constantly trying new things to improve our club. This year we have implemented two new scholarships for members to be eligible for by participation in club activities. Won't you please help make this happen?

So now is the time for all members to participate and help raise money for the society and keep it strong. If you cannot make it to the April meeting, you can still volunteer by contacting our Show Chair, Lynn Tate by email l.tate4@gmail.com or call/text 228-342-2963.



Your help is greatly appreciated and we are always thankful for the support that the members give of their time to the society. Please help make this show as successful as last year.

Thanks



Harrison County Gem & Mineral Society March 16, 2019

CALL TO ORDER: Meeting called to order by President Sue West at 1:20 p.m.

MEMBERS IN ATTENDANCE: 28

MEETING:

Minutes: The minutes of February 16, 2019 printed in the March newsletter: Julie Boudreaux moved to accept and Daniel Boudreaux seconded the motion. All were in favor. The motion passed.

Treasury Report: Report given by Lynn Tate. Lisa Fitch moved to accept. Cynthia Braden seconded the motion. All were in favor. The motion passed.

COMMITTEE REPORTS

Facebook: no report

Field Trip: The plans for an April field trip have been tabled.

Newsletter: Report given by Lisa Fitch. She reminded everyone of picnic on March 30. Contact her as a head count is needed. Mini-show on Second Saturday, April 13, at the Ocean Springs Library. \$20 fee. Six spots left inside. Rosalind Norvel-Daniels gave us a positive report on member turnout last year.

Website: Report given by Kathy Becnel.

(www.gulfportgems.org) Kathy Becnel brought to our attention that there are scrolling pictures of a past workshop on the site.

Workshop: Report given by Kathy Becnel. Three workshops scheduled in April:

Gladys Dedeaux - Victorian Drops Necklace

Karen Williams - Tennis Bracelet

Aurora King - Crochet

Cabbing: Buddy Shotts is ready to start teaching cabochons. It will be on a first come, first serve basis. Presently, there will only be room for one student at a time.

Program Demonstration: Report given by President Sue West. President Sue West - Hoop Wires

Show: Report given by Lynn Tate. She stated that all 15 booths have been filled with a couple of backups. Kat Becnel said USM would like a small space. New Orleans Geographical Society will be there with their dinosaur display. They give away little pieces of dinosaur bones to the kids.

*Vendor dinner has a sign-up sheet for food entrees. Bring the food there Thursday, May 16, evening or Friday, May 17, morning.

*Past vendors have shown a good vibe towards the

luncheon.

*Thursday, May 16, at 1:00 you can start setting up tables. Volunteers requested.

*Lynn asked the club to get the business card of any "findings vendor" you might meet. We would like to get a "findings vendor" for future shows.

**At the April meeting, there will be several display cases available.*

**Signs will be available at the April meeting for distribution.*

**At the April meeting, we will be stamping and labeling postcards.*

Sunshine: Report given by Clemencia Howe. She stated that there are several anniversaries and birthdays coming up. The cards may be late, but they will be sent.

COMMUNICATIONS: No report.

Old Business: An audit was performed, and everything is okay.

New Business:

*Merit-based scholarships for the show and for teaching scholarships were explained.

*Lisa Fitch will oversee Admissions.

*Reba Shotts will oversee Demonstration shifts.

*Master of Ceremonies is Kat Becnel.

*Diane Dewees is the Hostess at the front door.

*Laura Tate oversees the Vendor Luncheon.

*A volunteer is needed for monitoring the dining area; someone that will make sure the supplies are replenished.

*Keys for storage unit. 5 keys are assigned to Sue West, Lynn Tate, Clemencia Howe, Nicole Green and Kat Becnel.

*Consideration for buying a new cabbing machine. Discussion. Diane Dewees moved to accept, and Julie Boudreaux seconded the motion. All were in favor. The motion passed.

*Buddy Shotts has been charged with purchasing the cabbing machine on behalf of the club.

*The Mississippi Craft Center was explained by Sue West.

DOOR PRIZES: Kat Becnel, Shirley Robinson, Aurora King, June Meyer, Monica White and Julie Boudreaux

SPLIT THE POT: Shirley Robinson

ADJOURNMENT: Julie Boudreaux made the motion to adjourn. Charley Cavanaugh seconded the motion. All were in favor. The motion passed. Meeting was adjourned at 2:21 p.m.

WORKSHOPS

Workshop Chairman:
kgbecnel@gmail.com

April 20, 2019

Kathy Becnel
228-342-0716

Tennis Bracelet

By Karen Johnston

* * **No Kits Available** * *



Supplies:

Size 11 Seed Beads
40-45 4mm Bi-Cone Crystals
2 Size 11/12 beading Needles (or 2 Big Eye beading Needles)
Fireline or equivalent Beading Thread
2 Beading Needles
1 Clasp of your choice
Scissors
Mat

Victorian Drops Necklace

By Gladys Dedeaux

* * **No Kits Available** * *



Supplies:

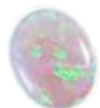
100 4mm Square Beads
35 to 40 6mm Bi-Cone Crystals
1 8mm Bi-Cone Crystal
Size #11 Seed Beads
Beading Thread
2 Beading Needles
1 Clasp
Scissors
Mat

Cabbing Workshops

If you are interested in cabbing we have instructors available to teach you. Time may be limited if other members are waiting to use the machines.

- ♦ \$3.00 per Day for equipment usage
- ♦ Must be a member (waiver on file)
- ♦ Guest not allowed to use equipment

Contact Equipment Chairman
Cindy Braden - 706-266-0221



Crochet

By Aurora King

Supplies:

As noted in minutes from meeting. Please see website or Facebook. No information available for newsletter.

Upcoming 2019 Workshops

May - SHOW No Meeting or Workshop

SEE OUR WEBSITE & FACEBOOK PAGES



Thought of the Day . . .

*Be thankful for what you have;
You'll end up having more.*

*If you concentrate on
what you don't have,*

You'll never, ever have enough.

Oprah Winfrey



Happy Anniversary

Cindy Easterling

Sage & Gabby Laega



Happy Birthday

Ebb Young

Easiest Ever Easter Bunny Cake

Serves: 12 Prep Time: 45 min Cook Time: 40 min



Ingredients:

3 cups all-purpose flour
1 Tbsp. baking powder
2 cups granulated sugar
1 cup (2 sticks) Country Crock® Baking Sticks or
1 Cup Country Crock Spread
4 large eggs
1 cup milk
2 tsp. vanilla extract

Directions:

Preheat oven to 350°. Grease and flour two 9-inch round cake pans. Combine flour and baking powder in medium bowl; set aside. Beat sugar with Country Crock® Baking Sticks in large bowl with electric mixer until fluffy, about 2 minutes. Beat in eggs, 1 at a time, until blended. Combine milk and vanilla. Alternately beat in milk and flour mixtures until blended. Spread evenly into prepared pans. Bake 35 to 40 minutes or until toothpick inserted in centers comes out clean. Cool 15 minutes on wire rack; remove from pans and cool completely.

To assemble and decorate, leave 1 cake layer whole and place on large platter. Cut 2 opposite edges of the other layer into "ears". Cake remaining will be "bow tie". Arrange on platter. If desired, spread with frosting* and decorate with shredded coconut and/or candies.

Frosting:

*To make an easy and delicious frosting, beat 1 box (16 oz.) confectioners' sugar, 1/2 cup Country Crock® Baking Sticks, 2 Tbsp. milk and 1 Tbsp. vanilla extract in large bowl with electric mixer until fluffy, about 3 minutes.

Recipe By: www.countrycrock.com

FIELD TRIPS



Dixie Mineral Council Field Trips

The Southeast Federation of Mineralogical Societies, Inc



The Friendly Federation - Founded in 1976 to serve
DMC Program of the SFMS Field Trip Committee
Copyright © All rights reserved.

An Official Field Trip of the Georgia Mineral Society (Norcross, GA) (HOST)

Saturday, April 6, 2019
Meet no later than 8:30 AM EST
Caravan into Quarry at 9:00 AM EST
Bartow County, GA
Registration Required

Sunday, April 7, 2019
9:00 AM EST
Summerville, GA
Registration Required

TRIP: The first location is part of the Corbin Gneiss Complex where porphyroblastic granite gneiss is being mined. The rocks there are some of the oldest in Georgia - approximately 1.2 billion years. The second location is a small, family owned quarry that has been a popular location for local clubs for many years. There will also be an optional side trip to a location close by where a variety of cutting material will be for sale.

COLLECTING: At the first location we will be collecting granite gneiss with blue quartz. Small pieces can be collected by hand and larger pieces can be collected with hammer and chisel. This material can be cut and polished and it also makes nice specimens.

The second location is known for its colorful lace banded chert/agate. Most of the material is loose and ranges in size from pebbles to boulders. Some of the material is good for lapidary use and some of it is more suitable for specimens.

BRING: For both locations, bring a rock hammer, small sledge, chisel, scratching tools, buckets, and a spray bottle with water to wet the rocks so you can see the color better. You may also need sunscreen and gloves, plus a dolly is recommended for hauling out large rocks and heavy buckets.

REQUIREMENTS: The first location requires gloves, safety glasses, hard hat, and steel toed or sturdy boots with ankle support (hiking boots). No open toed shoes allowed. The same equipment is recommended for the second location, but not required.

SPECIAL CONDITIONS: Both locations are active quarries. **STAY AWAY from all heavy equipment, high walls, ponds, and quarry machinery.**

TERRAIN AND ACCESSIBILITY: Both locations have flat areas and areas with loose rock. People with mobility issues may have some difficulty navigating over and around boulders. There may also be soft, muddy areas if it rains before or during these trips. Collecting areas are within 100 yards from where we park.

CONTACT: Charles Carter, 770-998-1127, fieldtrips@gamineral.org



Granite Gneiss with blue quartz



Lace banded chert/agate

HCGMS 2019 March Workshop & Program



Ms. Gulf Coast Gem & Mineral Society Annual Picnic.
We had a great time!

Program
Cindy Braden & Karen Williams discussed Crystal ID



Resident Cabber, Ed King
and VP Buddy Shotts



Rosalind helps in the kitchen
for lunch



Above: Lisa Fitch
teaches the Shamrock
Bracelet.

Right:
Reba
Shotts did
2 colors in
blue.



Karen Wil-
liams did
hers in 2
shades of
Pink,



Rosalind
did hers in
5 shades of
green.



They were
all pretty.



Above & Below:
Kathy Becnel teaches the
Stretchy Bracelet





MEETINGS WEEKLY



Meetings / Workshops

Herbert Wilson Recreational Center
3625 Hancock Avenue
Gulfport, Ms. 39501

3rd Saturday of each month

9 am - 12 pm Workshop
12 pm - 1 pm Lunch
1 pm - 2 pm Meeting

Directions: Coming from Pass Road or Highway 90 turn on Courthouse Road. Turn next to Hancock Bank on 33rd Street until you reach Hancock Street. Look to your left and you will see the Herbert Wilson Recreational Center. We are on the left side of building thru the gates.

Come for fun . . . Stay to play!

Visit our Website and Facebook page:

www.gulfportgems.org or
<https://www.facebook.com/gulfportgems>

Workshops are offered free!

Next Meeting & Workshop

April 20, 2019

Visitors are always welcome

Please bring a guest. . .

3 Workshops this Month

Membership Dues

Single \$20.00 - 18 years old
Family \$30.00 - 2 adults and all minors under 18 yrs. old at the same address
Junior \$10.00 - Sponsored by an adult

Application on website & newsletter

Dues deadline - 3rd Saturday of January

See Lynn Tate, Treasurer



Name Tags - \$7.00

Shirts - available and cost is based on sizes

Please see Ellen Kirsten 413-668-6934

2019 MEETING DATES

Jan 19	May 18 & 19 SHOW	
Feb. 16	June 15	Sept 21
March 16	July 20	Oct 18
April 20	Aug 17	Nov 16
Dec 21 Christmas Party		

Nearby Gem Societies



Ms. Gulf Coast Gem & Mineral Society

www.mgcgms.com

Meeting: 2nd Saturday of the month



Mobile Rock and Gem Society

www.mobilerockandgem.com

Meeting: 2nd Tuesday of the month



Gem & Mineral Society of Louisiana

Meeting: 2nd Monday of the month

Contact: Levette @ 504-214-3205

Other Interests:

International Society of Glass Blowers

Website: www.isgb.org

Visit site if you like Lampworking



Dixie Mineral Council

<http://www.amfed.org/sfms/index.html>

Diamond

FACTS

- Mineral: Diamond
- Chemistry: C
- Color: All colors
- Refractive index: 2.42
- Birefringence: None
- Specific gravity: 3.52
- Mohs Hardness: 10



Wedding Anniversaries: 60th, 75th & 80th

You probably already know of the diamond's toughness. In fact, it's the hardest gemstone and is made of just one element: carbon.

Its structure makes it 58 times harder than anything in nature and can only be cut with another diamond. While it's become nearly synonymous with wedding engagements, it's also the perfect stone for individuals who want something that's just as appropriate for everyday wear as it is for special occasions.

Diamonds come in several colors, including yellow, red, pink, blue, and green, and range in intensity from faint to vivid. Generally speaking, the more saturated the color, the higher the value.

In fact, diamonds sparkling with intense color are rare and may be priced higher than a colorless diamond of equal size. Because fancy-color diamonds are very desirable, color is sometimes introduced in a laboratory. These are correctly called *color-treated diamonds*.

Its unique physical properties means it has the best possible luster of any gemstone when cut and polished well. So if you're in the market for "sparkle," the diamond is the gemstone for you.

History and Lore: The world's first diamond color-grading system dates back to sixth-century India. The system was based on the country's ancient class structure. Members of different status levels, or castes, were permitted to own and wear only diamonds of a specific color. Thus, diamonds served as a badge of rank.

The priests and rulers, the Brahmins, were allowed to own diamonds that were "whitest of the conch, of the lotus, or of the rock crystal" (white to colorless). The landowners and warriors were assigned diamonds that were "the brown color of the eye of the hare." The merchant class was allowed to own only diamonds that were the "pretty nuance of a petal of a kadl [flower]" (yellow). And members of the lower classes were assigned diamonds with "the sheen of a burnished sword" (gray or black). Kings, however, were free to possess diamonds of any color.



The colors exhibited by natural fancy color diamonds are usually not very intense.

Diamond color-grading systems have evolved a lot since that time. Today, there are well-established methods for judging diamond color based on much more than a comparison to conch shells, rabbits' eyes, and flower petals. And the only restrictions to owning different colors are based on availability and affordability.

Fancy Colored Diamonds... Fancy color diamonds come in almost any color you can imagine. Red, green, purple, and orange are generally the most rare, followed by pink and blue. Yellows and browns are the most common fancy colors, but they're generally less valuable than the rarer colors. Only one in 10,000 has a fancy color.

Diamonds in the normal color range are colorless through light yellow and are described using the industry's D-to-Z color-grading scale. Fancy color diamonds, on the other hand, are yellow and brown diamonds that exhibit color



beyond the Z range, or diamonds that exhibit any other color face-up. These rare specimens come in every color of the spectrum, including, most importantly, blue, green, pink, and red.

Gem diamonds in the D-to-Z range usually decrease in value as the color becomes more obvious. Just the opposite happens with fancy color diamonds: Their value generally increases with the strength and purity of the color. Large, vivid fancy color diamonds are extremely rare and very valuable. However, many fancy diamond colors are muted rather than pure and strong.

Blacks, grays, and fancy whites are considered fancies, too. Some have been fashioned into gems. The 67.50-carat Black Orloff diamond, named after the Russian Princess Nadia Vyegin-Orloff, is the most well-known example.

Spectacular prices in high-profile auctions are another factor in the increased awareness of fancy color diamonds. Not all fancy color diamonds command such high prices, however. Many people consider yellow and brown fancies less desirable than near-colorless stones of equal weight and clarity. And deeper yellows and browns are generally less valuable than other fancy colors.

The most well-known historical and current sources of fancy color diamonds are India, South Africa, and Australia. Other diamond mine locations, including Brazil, Venezuela, Guyana, and Indonesia, also produce fancy color diamonds.



These rare pink and violet diamonds make up a tiny but important fraction of the Argyle mine's production. - Courtesy Rio Tinto Diamonds.

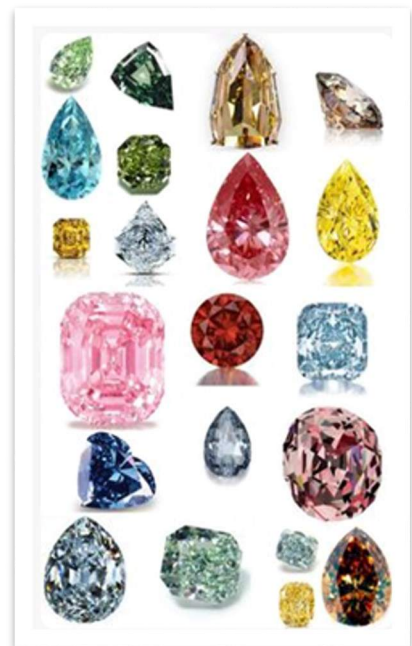
Fancy color diamonds are among the rarest and most valuable gemstones.



“ Hope Diamond ”



The Smithsonian Museum of Natural History is home to the 45.52-carat Hope Diamond, the world's largest deep blue diamond. The gem has a long and mysterious past and some people even think it is cursed!



Gia.com, smithsonianeducation.org, history.com, <http://famousdiamonds.tripod.com/cullinandiamonds.html>

BURNISHING BEZELS

A dapping ball can sometimes be used to burnish a bezel. I noticed this when setting some 10 mm cabs on a piece of filigree. It was difficult to get enough pressure with a pusher or a regular burnisher, so I tried a dapping ball and found it much easier. Make sure the ball is well polished (hit it with the Zam wheel) and let it ride along the base of your piece. Select a ball big enough so its curvature hits the top of the bezel at the best angle to burnish it down onto the stone.



SUPER PICKLE

We've all made the mistake of putting some steel in the pickle pot. This can cause all your pieces to be coated with copper. Easiest way I've found to clean it off is to fill half a coffee cup with new hot pickle and put in an ounce or two of hydrogen peroxide from the drug store. Throw your pieces in and the coating is gone in about 10 minutes. When finished, pour the solution back into your pickle pot.

Many people think that when some steel gets into the pickle, the solution is contaminated and should be thrown away. Not true as long as you can remove all the steel from the pickle. In fact, the pickle should work even better after the steel is removed. Pickle works by dissolving the copper oxides that form during soldering. Pickle gets "old" when it cannot hold any more dissolved copper. Putting steel in the pot forces some of the copper to come out of solution, meaning the pickle is then able to dissolve more copper.



Be More Productive With Brad's "How To" Books
[Amazon.com/author/bradfordsmith](https://www.amazon.com/author/bradfordsmith)

www.bradsmithjewelry.com

Articles are copyrighted by Brad Smith



To All SFMS Members:

The Southeast Federation is sponsoring a new event this year, which we hope will become an annual event. In an effort to promote interclub and improved SFMS and Club relations, we are sponsoring our 1st Annual SFMS Rockhound Roundup. Because time is short, we are emailing all clubs/presidents to start getting the word out. This will be followed by the addition of a Rockhound Roundup page on the SFMS Website, postings to our Facebook page and more emails to our member clubs.

The dates are May 17-19, 2019, to coincide with our 2nd Executive meeting, to be held at the same dates and place. The Roundup location is the Suwannee River Music Park near Live Oak, Florida. (<http://musicliveshere.com>) Space is limited and time is short, so if any of your members are interested, we suggest applying for a space quickly. If you have a means of sending emails to your club's membership, we ask that you forward this information to get the word out.

If you have any questions, please email me at: Jheerx6@aol.com. I prefer a written means of communication so I can keep record of questions and answers. This is a new venture, and there will most certainly be a learning curve as we progress!

Thank you,

Jerri Heer, Secretary
Southeast Federation of Mineralogical Societies
jheerx6@aol.com
419-344-9999

AFMS 2020 Annual Convention

TBA 2020

**Meeting information TBA
on website
www.amfed.org**

A.F.M.S. Newsletter

Subscriptions are \$4.50 per year

Checks should be made payable to "AFMS"

AFMS Central Office

Steve Weinberger

PO Box 302

Glyndon, MD 21071-0302

central_office@amfed.org PH: 410-833-7926

Can be read online: www.amfed.org

William Holland School of Lapidary Arts 706-379-2126

Website @ www.lapidaryschool.org

Classes are April - Nov 2019

Federation Week

June 9, 2019

S.F.M.S. Newsletter

Subscription to Lodestar is FREE electronically

Email: sfms.lodestar@gmail.com Or

Editor: john@rasmussengems.com

Can be read online:

<http://www.amfed.org/sfms/index.html>

www.amfed.org

WILDACRES RETREAT

828-756-4573

Website @ www.wildscres.org

Workshops subjected to change without notice.

Please check the website for changes.

Federation Weeks

Aug. 19-25, & Sept. 16-22, 2019



Southeast Federation Mineralogical Societies, Inc.

Rockhound Roundup Application

May 17 -19, 2019

Suwannee River Music Park, Live Oak, FL

We hope this will be the first of many Rockhound Roundups sponsored by the SFMS. Each SFMS member who applies for and is accepted, will be allotted a 10' x 20' space in an open field designated for this event. Cost this year is a minimal \$25.00 per space, one space per Vendor, for one to all three days. No tents, tables or chairs are available, you MUST BRING YOUR OWN! This is intended to be an old-fashioned rock swap and sale - bring your pickup, drop the tailgate and have fun.

Name: _____

Address: _____

Phone: _____ Cell: _____

Email: _____

SFMS Club Affiliation: _____

Vehicle Make/Model: _____ Plate#: _____

Will you have a tent? Yes _____ No _____

Applicant Signature _____ Date _____

Your signature indicates acceptance of the terms and conditions outlined in this two-page document.

Send Application and check made out to SFMS to:

SFMS Secretary
Jerri Heer
9016 122nd Av
Tampa, FL 33637-5321

_____ for office use only _____

Date form was received: _____ By: _____ Check # _____ Check \$ _____

Space assignment: Row: _____ Space: _____

SFMS First Annual Rockhound Roundup

Set-up Friday- Sunday, May 17-19, 2019 each day from 8 am – 10 am. Check in at the SFMS Welcome tent. All vendor vehicles must be in place by 10 am. Swap and sales start each day at 10 am, ending at 5 pm.

Venue Info:

1. Restrooms are available inside the Suwannee River Music Park at the Music Hall and Café.
2. ATM machine is available in the General Store.
3. Housing: Cabins, RV Space and campsites are available in the Park. Call Carol Walker at (386)365-0070 for reservations. If you don't reach her, leave a message, she will call you back. Please indicate that that you are with the Rockhound Roundup as they are tracking our participation. You may also reserve online at www.musicliveshere.com or by calling the main line (386)364-1683.
4. Hotels: In addition to accommodations onsite, there are several hotels nearby. Go to <https://www.musicliveshere.com/directions-maps/> for a list.
5. The General Store and Café has food available onsite and as take out. We are attempting to arrange one or more food trucks, but that is not finalized at this time. You are welcome to bring your own food and beverages. We may provide bottle water for sale at the SFMS Welcome Booth.

SFMS Responsibilities:

1. Provide a marked 10' x 20' space and vehicle access to the space.
2. Provide access to trash receptacles
3. Provide access to toilet facilities

Applicant/Vendor Responsibilities

1. Set-up within boundaries of provided space. Any changes to the designated space are only allowed at the discretion of the Roundup Committee.
2. Police assigned site for trash during and after event.
3. You are responsible for your own security. You may set-up and tear down each day.
4. Provide all equipment, tents, tables and chairs for your own set-up.

We ask that you please be understanding that as this will be our first time hosting this event. We will try to anticipate all reasonable needs. Our goal is to provide a smooth event, but there will likely be hiccups along the way. All of us are volunteers trying to make this an enjoyable event for all. We welcome your suggestions and ideas for improvement. You may email questions to Jheerx6@aol.com.

Shows and Events

Memphis Mineral, Fossil, Jewelry Show

Sponsored by the Memphis Archaeological & Geological Society.

April 27th and 28th 2019 Show Hours: Sat. April 27 9-6pm & Sun. April 28 10-5pm.

Agricenter, 7777 Walnut Grove Rd, Memphis, TN

Sat. April 27 9-6pm & Sun. April 28 10-5pm. Over 50 Dealers

Kids Areas with Gem & Fossil Dig, Geode Bowling and "Rocks around the Clock".

"Memphis Rock Banquet" a full table display of rocks that look like real food.

Adults \$5.00. 2- day pass \$8.00 Children 12 & under \$2.00. Scouts in uniform free,

www.theearthwideopen.com, email info@theearthwideopen.com Contact WC McDaniel 901-490-3575

The Georgia Mineral Society's 51st Annual Mother's Day Weekend

Gem, Mineral, Jewelry, and Fossil Show

May 10, 11, 12, 2019 – Cobb Civic Center, 548 South Marietta Pkwy., SE, Marietta, GA 30060.

Show Hours: Friday: 10am-6pm Saturday: 10am-6pm Sunday: 12pm-5pm
EXCITING AUCTION Saturday at 1 p.m.!!! FREE Admission! FREE Parking! Over 30 Dealers! Door Prizes! SPECIAL / Door Prize for Students! Win a Great Prize for Yourself and for Your School!

Website – www.gamineral.org Email – mayshow@gamineral.org

Alabama Mineral & Lapidary Society The 46th Annual Tannehill Gem, Mineral, Fossil, & Jewelry Show

June 1st & 2nd, 2019 Time: 9am-5pm Tannehill Ironworks State Park

The show is FREE with paid admission to the park. So pack a lunch and

Take I-20/59 to Exit #100 or I-459 to Exit #1 and follow the signs.

For more information contact Cathy Kellogg at tannehillgemshow@gmail.com or see our show pages on the web at <https://lapidaryclub.com>. The AMLS meets the 2nd Friday of each month at the Cahaba Heights United Methodist Church, Cahaba Heights, AL. at 6:30 p.m.

FOR A COMPLETE LIST OF SHOWS VISIT - amfed.org

[AKS GEM SHOW](#) Presents [New Orleans Bead & Jewelry Show](#)

Pontchartrain Center, 4545 Williams Blvd., Kenner, La. 70065

Admission Fee \$5.00 Hours: Fri & Sat 10am-6pm / Sun 10am-4pm

Email info@aksshow.com with inquiries Phone: 504-265-8830 Visit website www.aksshow.com

GET A COUPON FOR \$1.00 OFF Admission

2019 Dates: January 25th - 27th Winter Show / April 5th - 7th Spring Show
July 12th - 14th Summer Show / September 6th - 8th Fall Show / November 1st - 3rd Xmas Show

Save \$1.00 off
admission to any AKS
Gem Show

Offer Expires: no expiration.

This coupon is good for entrance to any AKS Gem Show! ***Be sure to check your inbox for additional savings from our exhibitors.***

[Check our list of shows now...](#)



Harrison County Gem & Mineral Society Information



Officers 2019

<u>President</u> - Sue West	(228) 831-2294
<u>Vice President</u> - Buddy Shotts	(601) 947-7245
<u>Secretary</u> - Nicole Green	(228) 344-8066
<u>Treasurer</u> - Lynn Tate	(228) 342-2963
<u>Directors</u>	
Laura Tate (1 yr.)	(228) 342-2971
Kathy Becnel (2 yr.)	(228) 342-0716
John Clinard (3 yr.)	(601) 766-3786

Committee Members

<u>Facebook Chairman</u>	
Laura Tate	(228) 342-2971
<u>Field Trip Chairman</u>	
John Clinard	(601) 766-3786
<u>Librarian Chairman</u>	
Arvid Coole	(601) 723-1412
<u>Newsletter Editor</u>	
Lisa Fitch	(228) 467-4684
<u>Sunshine & Hospitality Chairman</u>	
Clemencia Howe	(228) 822-2184
<u>Show Chairmen</u>	
Lynn Tate	(228) 342-2963
<u>Webmaster & Workshop Chairman</u>	
Kathy Becnel	(228) 342-0716
<u>Assistant Webmaster</u>	
Leslie Jancovich	(859) 321-5692
<u>Equipment Chairman</u>	
Cindy Braden	(228) 467-5198

Southeast Federation of Mineralogical Societies

<u>Ms. State Director, Parliamentarian & Boundaries</u>	
Buddy Shotts	(601) 947-7245
<u>Past President & ALAA Ms. State Representative</u>	
John Wright	(228) 875-9192
<u>Constitution / By-Laws</u>	
Lisa Fitch	(228) 467-4684

Field Trips

John Clinard

We are now members of the Dixie Mineral Council. You can attend any DMC Field Trips. It will be posted in each newsletter. Because of insurance requirements the general public are NOT invited to any field trips.

601-766-3786

jclinard173@att.net



Website

Kathy Becnel

Take the time and visit our website for the latest information and workshops. Submit articles and pictures to our webmaster.



<http://www.gulfportgems.org/>
kbecnel@gmail.com



Facebook

Laura Tate

Please visit our Facebook page to view all the latest news and information on our club and workshops. To post club information contact:

Laura Tate at wanderingmsrn@gmail.com



Library

Arvid Coole



The club has some interesting material available for viewing. Please contact Arvid to check out material from our Library. Be sure to return the material in a timely matter in order to share with other members.

Arvid Coole (601) 723-1412

Newsletter Editor

Lisa Fitch

Submit newsletter articles to:

Lapidaryarts@hotmail.com



Copyright 2019 Harrison County Gem & Mineral Society Newsletter known as Gulfport Gems. All rights reserved. Except for items that are specifically copyrighted by their authors, all materials in this bulletin may be freely copied. Please give credit to Gulfport Gems. Unless otherwise credited, articles are by the editor.

Articles and minutes are due by the last day of each month



Membership Form

Contact Our Treasurer: Lynn Tate (228) 342-2963 **Email:** l.tate4@gmail.com



HARRISON COUNTY GEM & MINERAL SOCIETY, INC. MEMBERSHIP APPLICATION			
APPLICANT INFORMATION			SINGLE \$20.00
Name:		Email:	
Date of birth (Mo/Day):	Anniversary: (Mo/Day)	Cell Phone:	
Current address:		Home Phone:	
City:	State / Zip Code:	Work Phone:	
CO-APPLICANT / SPOUSE INFORMATION			FAMILY \$30.00
TWO ADULTS & ALL MINORS UNDER 18 YEARS OF AGE/AT SAME ADDRESS			
Co-Applicant / Spouse:		Email:	
Date of birth (Mo/Day):	Cell Phone:	Work Phone:	
JUNIOR INFORMATION			JUNIOR \$10.00
UNDER 18 YEARS OF AGE ★ SPONSORED BY AN ADULT			
Name	Birthday (Mo/Day/Year)	Relationship:	
Name	Birthday (Mo/Day/Year)	Relationship:	
Name:	Birthday (Mo/Day/Year)	Relationship:	
Name	Birthday (Mo/Day/Year)	Relationship:	
★ EMERGENCY CONTACT INFORMATION ★			
Name:			
Relationship:	Home Phone:	Cell Phone:	
INTEREST INFORMATION			
Hobby Interest:		Jewelry Interest:	
(Each applicant initial interests)			
<input type="checkbox"/> Fossils <input type="checkbox"/> Minerals <input type="checkbox"/> Lapidary (<input type="checkbox"/> Cabbing, <input type="checkbox"/> Faceting, Etc.) <input type="checkbox"/> Field Trips (Creeks, Gravel pits, Mines, Etc.) <input type="checkbox"/> Special Interests _____		<input type="checkbox"/> Beading <input type="checkbox"/> Kumihimo <input type="checkbox"/> Pearl Knotting <input type="checkbox"/> Other _____	
		<input type="checkbox"/> Wire Wrapping <input type="checkbox"/> Chainmaille <input type="checkbox"/> Silversmithing	
APPLICATION FEES			
Applications can be mail to: Harrison County Gem & Mineral Society P. O. Box 10136, Gulfport, Ms. 39505			
Single \$20.00	Family \$30.00	Junior(s) \$10.00 Each	DUES: \$
Dues: <i>Circle One</i>	NEW RENEWAL	No Proration Deadline: 3rd Saturday of January	TOTAL: \$
SIGNATURES			
How did you hear about our society? _____			
I authorize HCGMS to use my picture or likeness for society promotions?			YES or NO
I authorize HCGMS to include my information in society listings for members only?			YES or NO
Signature of applicant:		Date:	
Signature of co-applicant/spouse (only if for a family membership):		Date:	
*Newsletter will be sent via email @ no charge		Modified 11/20/17 LF	

Our goal is to promote, educate and stimulate interest in the earth sciences and lapidary arts context.



Gulfport Gems, Editor
P O Box 10136
Gulfport, MS 39505

Address Service Requested



THE OFFICIAL PUBLICATION FOR THE HARRISON COUNTY GEM & MINERAL SOCIETY, INC.