



THE HULLETT PROVINCIAL WILDLIFE AREA

A Prime Multi-Use Multi-Season Facility

USER GUIDE 2018-2019





Municipality of Central Huron
23 Albert Street, P.O. Box 400
Clinton, ON N0M 1L0
(519) 482-3997
info@centralhuron.com

*... extends a warm welcome to all
those visiting the Hullett Wildlife Area*

While you're visiting the Hullett Wildlife Area, see everything else the Municipality of Central Huron has to offer!

*Be sure to come
and visit today!*



Two golf courses – Woodlands Links
and Bluewater Golf Course!



From unique shops, a wide range of restaurants and local attractions such as the CNR School on Wheels, the historic Ball's Bridge, and Racetrack Slots, or see our heritage coming to life in picturesque murals which decorate downtown Clinton.

We're proud to have this fine recreational area in our municipality, and proud of its ever-increasing use by people from across Ontario and the northern United States.

www.centralhuron.com

A Message from... The Board of Directors of the Friends of Hullett

On behalf of the Board of Directors of the Friends of Hullett I would like to welcome you to the Hullett Provincial Wildlife Area.

If it is your first time visiting the wildlife area, take some time to review the user guide so that you are familiar with the rules and regulations associated with HPWA. **If you have been here before, please review the map section as well as the rules and regulation section located on page 4 and 15 for any changes that may have taken place since your last visit.** Also do not hesitate to check out our newly improved website with mobile compatibility for more information on the HPWA and upcoming events. Follow us on Facebook @Hullett Marsh and on Instagram @Hullett_Marsh!

The Friends of Hullett Inc. is a strictly volunteer group of men and women from around Southern Ontario who spend hundreds of hours outside of their regular jobs to direct the management of day-to-day operations at the wildlife area. The Board of Directors meet monthly and correspond almost daily.

The BOD administers a large agricultural contract, which along with generous donations from the public, provides the funds for maintenance of the marsh grounds, buildings, and the funding for new and exciting projects, as well as the hiring of employees.

Our employees are carefully chosen based on their educational background, patience, and insight. We have been most fortunate to have employees that are self-starters. The nature of their jobs necessitates the ability to not only see the work at hand, but to work outside a game plan. This year we are extremely lucky as we have renewed our contract with Marsh Manager, Scott Austin, who is a long time local resident and founding Director of the FOH. Assisting Scott in 2018 is Greg Urquhart a fish and wildlife graduate who is taking on the responsibility of various marsh tasks such as: Phragmites removal, GIS mapping, data collection and management, day-to-day maintenance tasks and other various endeavors.

Scott has also managed to obtain three summer student employees in 2018 through various Federal and Provincial programs. Two of

these positions are high school students dedicated to maintenance and upkeep around the marsh. They have been working on many priority jobs this summer such as replacing parking barriers, signage and extensive marsh clean-up. The third is our Recreation and Event Coordinator who has designed this years User Guide, re-designed the website and provided quality interpretive programming for the community throughout the summer months. Partnered with the O.M.N.R.F and Ducks Unlimited Canada, the Board of Directors continue to manage this amazing 2,200 hectare wetland complex in Huron County. The success of our operation depends on much more than the three senior partners. Our employees are indispensable as are the volunteers that manage many of our projects at Hullett and show up for workdays, either impromptu or planned. If you have an idea for improvement to the area, or a program you might want to see at Hullett, do not hesitate to bring it to the attention of the staff or directors. The senior partners, the Board of Directors, our employees, and our volunteers all recognize Hullett as a "jewel" tucked away in Southern Ontario.

If you are new to the Hullett area, or are a frequent visitor, you can participate in the Hullett experience by: hiking, hunting, horseback riding, canoeing, or simply volunteering some gratifying time to the marsh. Regardless, you will not be disappointed.

Duane Inkpen, Chairman

Hullett has been signed in accordance with the Trespass to Property Act. These signs have a yellow circle that is 10 cm in diameter. They will refer to prohibited activities within the marsh.

Table of Contents

Message from Directors.....	3
Day-use Regulations & Prohibited Activities.....	4
Ducks Unlimited Canada.....	5
Species at Risk.....	6-7
Species Profile: Midland Paintede Turtle.....	8
Birding Checklist.....	9
Hullett Map.....	10-11
Hunting Stakes and Waterfowl Opening Day.....	12
Birding Tips For Beginners.....	13
Trails, HMWA & Message from the Marsh.....	14
Hunting Rules and Regulations.....	15
A Word From Our Conservation Officers.....	16
Photo Contest.....	17
Thank You & Become a Member.....	18

Board Members

<i>Chair</i>	Duane Inkpen
<i>Vice Chair</i>	Mathew Shetler
<i>Secretary</i>	Bill Dineen
<i>Treasurer</i>	Ryan Bayne
<i>Directors</i>	Mike Cardinal
	James Bayne
	Wayne Hanson
	Wade Beaudoin
	Chris Ambrose

STAFF

Marsh Manager: Scott Austin

*GIS & Wildlife Technician:
Gregory Urquhart*



Help Maintain the Marsh... Become a 'Friends of Hullett' Member

Contact us for more information... *office phone: 519-482-7011*
web: www.hullettmarsh.com • e-mail: fohoffice@tcc.on.ca
PO Box 1520, Clinton, ON. N0M 1L0

\$25

\$25

General Regulations:

MOTORIZED VEHICLES

Motorized vehicles are permitted on maintained roads and parking lots **only**.

PARKING

Daily parking is permitted between the hours of 5:00 AM and 9:00 PM. Overnight parking is only permitted at 40874 Summerhill Road and camper trailers are not permitted. All hunters please see page 15 for additional parking regulations.

VEGETATION

No person shall remove or cut any plants or trees without permission from the OMNRF or Hullett Staff.

DOG TRAINING

Retriever training activities on water are **not permitted** in **ZONE A** between May 15 and August 1 or in **ZONE B** between May 15 and July 15. Dogs are to be leashed or under immediate control of the handler. If you use live birds for training you must obtain the appropriate permits from the OMNRF Vineland Area Office. You may need one or both of the following permits: 1. Authorization to Conduct Field Trials and Training during closed season; 2. Authorization to Release Wildlife Imported into Ontario Propagated from Stock Imported into Ontario. The OMNRF office issuing these permits may be contacted at 905-562-1177.

HORSE ACCESS

Horse access is **not permitted** in **ZONE A** from October 1 to May 1. Winter access for horses is available in **ZONE B**.

SNOWMOBILES

Snowmobiles are permitted **only** on marked OFSC snowmobile trails.

WATER ACCESS

Water access is **not permitted** in **ZONE A** between May 15 and August 1, and in **ZONE B** between May 15 and July 15. This includes retriever training activities, kayaking, canoeing and wading. This is to minimize disturbances to nesting waterfowl.

BOOKING FOR GROUP ACTIVITIES

Booking for any groups (dog trials, training, bird watching, horseback riding, etc.) may be scheduled by contacting the Hullett Office at **519-482-7011**. Any large groups found on the property that have not scheduled an event will be asked to leave the marsh.

HUNTING AND FIREARMS

Please see page 15 for hunting and firearm regulations.

Munro Honey & Meadery

Honey ~ Mead ~ Gift Baskets ~ Gift-



Open from April until December, Monday to Saturday 9am-5pm
Closed Statutory Holidays & Saturdays from January until March

3115 River St. Alvinston 519-847-5333



artech

signs & graphics

artech@tcc.on.ca

www.artech-signs.com

Prohibited Actions

ALCOHOL

Alcohol is **not allowed** on public lands under Ontario Liquor Licence Act.

CAMPING

Camping is **not permitted** unless special permission is received from the Board of Directors and the OMNRF.

COMMERCIAL OPERATIONS

Commercial operations will not be located on the property. No monopolization of the area is permitted. All persons and/or groups are expected to remove any and all equipment they bring into the area.

ATV'S

ATV's are NOT permitted within the HPWA; expect for Friends of Hullett management purposes, under the permission of the FOH, and in accordance with guided White Swamp waterfowl hunts. ATV's are **extremely** damaging to the trails, vegetation, and the natural ecosystem of the property. The marsh is patrolled and charges will be laid.

LITTERING

DO NOT LITTER! You are responsible for the removal of your own garbage and property.

MOTORIZED BOATS

All motorized boats are **prohibited**, including those with electric motors.

Congratulations to Wayne and Nancy Denham for winning Hullett's 2018 Photo Contest.
See page 17 for details. Lights, Camera, ACTION!



Investing in the future and legacy of Hullett Marsh

Located within the Mississippi and Atlantic Flyways, Hullett Provincial Wildlife Area is one of the most spectacular wildlife habitats in Eastern Canada.

Locally known as Hullett Marsh, this 5,420-acre (2,200-hectare) wildlife management area includes nearly 1,800 acres (728 hectares) of wetlands and plays host to a diversity of wildlife, including 18 different species of waterfowl. The area also supports hundreds of species of plants and wildlife – including species at risk, such as the Common Snapping Turtle.

A vision realized

In the 1970's, the Province of Ontario purchased the land where Hullett Provincial Wildlife Area is situated from local landowners, with a vision to turn it into the wildlife management area it is today. A longstanding partnership between the Province and Ducks Unlimited Canada (DUC) then formed, and in 1983 the vision became a reality when the large wetland projects that you see today were completed.

In 1998, the not-for-profit group Friends of Hullett formed in response to provincial cutbacks. Today, this group oversees day-to-day operations of the area, while DUC and the Province team up to maintain infrastructure, like wetland water control structures.

Restoration for the future

Since 2010, DUC has invested more than \$1 million to replace, upgrade or rebuild the

infrastructure that is critical to maintaining Hullett Marsh's wetlands. In 2018-2019, DUC is once again investing in the future, and legacy, of Hullett Marsh. With financial support from Wildlife Habitat Canada and the U.S. Fish & Wildlife Service, DUC will repair and rebuild aging infrastructure at the Greenwing Pool, one of the eight large permanent wetlands at Hullett Marsh.

From addressing burrowing animal damage and beaver activity, to repairing and rebuilding the earthen dyke as well as upgrades to water control structures, this work will ensure the habitat remains intact for years to come.

DUC and its conservation partners are investing in long-term solutions that will sustain the health and productivity of one of the most spectacular restored wildlife habitats in Eastern Canada. Waterfowl, other birds, turtles, frogs, mammals and people will all benefit from the investments made at the Hullett Provincial Wildlife Area.

It was a vision that led to the creation of Hullett Marsh, but it's partnerships that keep it thriving.



To learn more about DUC, and how you can help keep wetlands in your community healthy, visit ducks.ca



©BOB BELLFOY

Hullett Marsh is a multi-use, multi-season facility known for waterfowl and pheasant hunting.

Did you know?

Funds raised from the sale of the Canadian Wildlife Habitat Conservation Stamp (Migratory Game Bird Hunting Permit) go towards funding wildlife and habitat protection and restoration projects, including Hullett Marsh.

"It's an extraordinary place. People seek it out to experience nature, to hike, canoe and hunt. But you really need to see an aerial image to understand the scale of Hullett Marsh Provincial Wildlife Area."

Jeff Krete – conservation specialist,
Ducks Unlimited Canada



Ducks Unlimited
Canada

"Species at risk: plants and animals that are in danger of disappearing from the wild. There are more than 300 animal and plant species considered "at risk" in Canada. The survival of a species can be jeopardized by a variety of factors, and determining the cause and solution is often a complex scientific process." – Nature Conservancy Canada

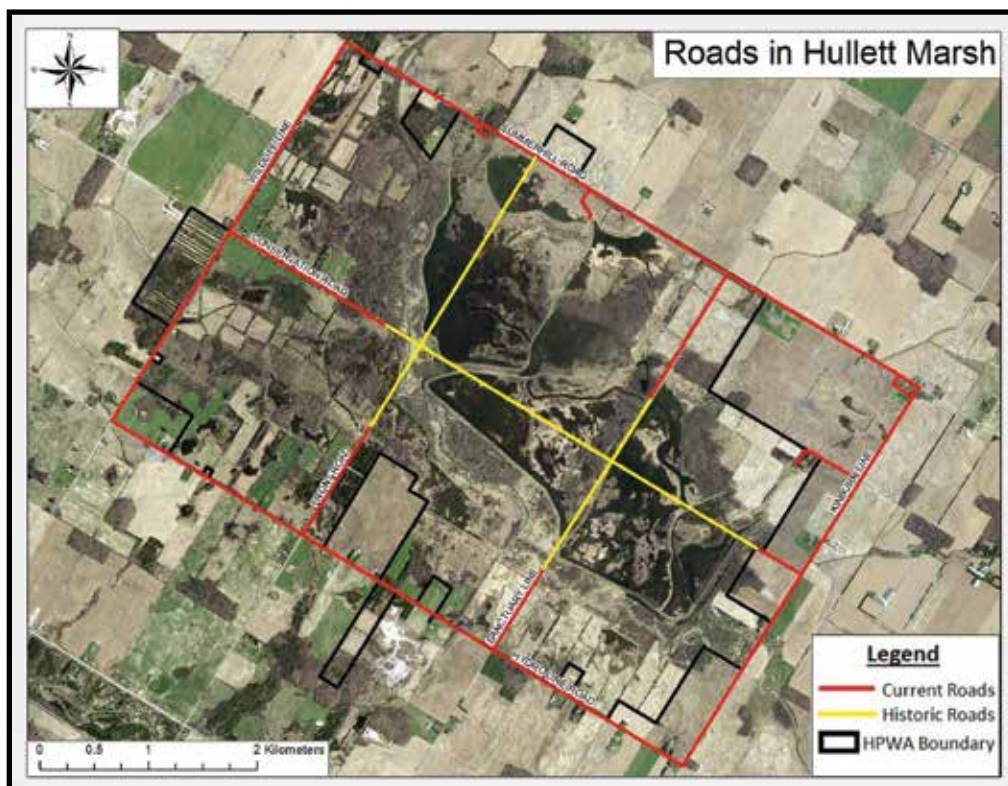
Bald Eagles, all 8 species of Ontario Turtles, Karner Blue Butterflies, Bobolink, and Green Dragon are all examples of species at risk (SAR) within Hullett Marsh. Our world is ever-changing and since the second industrial revolution in Canada, between 1860 and 1950, various plant and animal species have seen changes just as significant as humans have. As our population has grown and adapted, wildlife species have also been forced to adapt. All flora and fauna have suffered through various environmental adjustments which have drastically impacted their population. Hullett Marsh is no exception to these vast changes.

In order to recognize and officiate the changing populations of species, in 2003 the Canadian government amended the Species at Risk Act. This act established the new governing body for species at risk, COSEWIC (Committee on the Status of Endangered Wildlife in Canada). The committee meets twice a year to assess the status of wildlife throughout Canada and evaluates their risk of extinction. It is also the job of COSEWIC to establish proper legal protection and recovery of species identified as SAR's. To properly identify the needs of each species, COSEWIC began by creating a SAR "ladder" which has six stages. Each of these stages has a different amount of protection through the government. COSEWIC keeps a list of SAR where there are currently over 300 species. A number of these species have recently and historically been found throughout Hullett Marsh.

The six levels to the SAR "ladder" are:

Not at risk → **Special Concern** → **Threatened** → **Endangered** → **Extirpated** → **Extinct**

Some of the most susceptible species to environmental changes are reptiles and amphibians including: salamanders, frogs, toads, turtles and snakes. Ten species of amphibians, eight species of turtles, and eleven species of snakes are all considered to be at risk of extinction in Ontario. The majority of these reptiles and amphibians are affected by similar threats to their population. The most severe of these risks are habitat fragmentation and pollution. Habitat fragmentation is the process of dividing an ecosystem or habitat into smaller parts, usually created by expanding cities (urban sprawl) or road construction/creation. When considering Hullett Marsh in terms of habitat fragmentation, the building of the marsh actually decreased the amount of fragmentation in this area. The picture on the right shows how habitat fragmentation was decreased by the removal of three interior roads, reducing automotive traffic.



Apart from fragmentation, these species are put in extreme danger when exposed to high levels of pollution. This pollution stems from: field run off (nitrogen, fertilizers and insecticides such as DDT), factories (CO₂, Phosphorus), and road traffic (salt, gasoline, and diesel). In addition to habitat fragmentation and pollution, they are put in danger from road mortality, climate change, and the introduction of invasive species.

While reptiles and amphibians shed light on just a few of the various environmental changes that affect many of our SAR's, there are also many other impacting factors. One particular species is the Little Brown Myotis (*Myotis lucifugus*) formally known as the Little Brown Bat, who is now listed as an endangered species. The culprit? White-nose Syndrome (WNS). WNS is an introduced disease from Europe that forms a fungus on our hibernating bats and forces these little ones to wake up early in search of food and water. Unfortunately, in the dead of winter there is no food or water for the bats. This leads to dehydration/starvation and the bats then experience a winter kill-off in mass numbers. Apart from animals, diseases are also affecting our flora species, especially trees, with diseases such as: Beech Bark Disease and Dutch Elm Disease. However, when trees are stressed and about to die they will create a bumper crop (access amounts of seeds) for a number of years before officially dying. This creates an excessive amount of additional seedling trees, allowing the population to restore itself and become unaffected for longer durations. Diseases are popping up across Ontario and affect many of our native species, adding to the number of SAR's.

Our world continues to change every second, and these adjustments are affecting our wildlife. COSEWIC can make new regulations, put action plans into place and discuss the ever-changing status of various species but it takes much more than just one committee to make these positive changes. COSEWIC relies heavily on the general public to protect our natural environment. From reporting SAR sightings to making sure you stop to allow wildlife to cross roads, you can make a difference! To learn more about SAR's, visit: www.ontario.ca/page/species-risk

All/any of the following are ways to report your SAR sighting!

- Download the following apps on your smart device:
 - iNaturalist
 - eBird
 - Ontario Reptile and Amphibian Atlas
 - eButterfly
 - Ontario Butterfly Atlas
- Email your sightings to:
 - Natural Heritage Information Centre:
nhicrequests@ontario.ca
- Snail-mail your sightings to:
Natural Heritage Information Centre
Ontario Ministry of Natural Resources and Forestry
300 Water St., 2nd Floor North Tower
Peterborough, ON K9J 3C7



BAYFIELD BERRY FARM

Sat/Sun Brunches May-Oct.
77697 Orchard Line
Bayfield, ON

Fresh Produce
Baked Goods
Preserves
Gifts & Crafts
Light Meals
Ice Cream
Cider & Fruit Juices
Patio

519-482-1666
berryfarm@tcc.on.ca
www.bayfieldberryfarm.on.ca

office supplies - computer/copier/fax sales & service
environmentally-friendly cleaning supplies
Telus & Koodo phones, cards & accessories - copy & fax centre
office space planning & ergonomics ...and much more!




O/B BLUEWATER OFFICE EQUIPMENT LTD.

Shop our online store @ www.microagebasics.com
223 HURON RD., GODERICH 519-524-9863
214 JOSEPHINE ST., WINGHAM 519-357-1554
746A QUEEN ST., KINCARDINE 519-396-3274

Kelly Auto Service

Towing

Complete Mechanical Repairs

Oil Changes & Tune-ups

Air Conditioning, Tires, etc.



26 Birch St. Seaforth, ON

519-527-2210

Species Profile

Midland Painted Turtle (*Chrysemys picta marginata*)

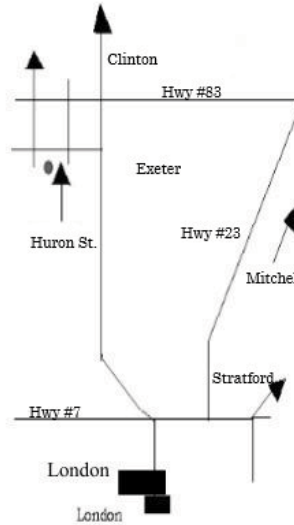
Once the most common, Midland Painted Turtles now join the other seven species of Ontario Turtles as a Species at Risk (SAR). A day in the life of a turtle is not as easy as many make it out to be. Sure, you can often find Painted Turtles spending their days basking on logs in a small pond; but where is that pond? What pond are you imagining in your head? Is it one surrounded by residential areas or city buildings? Habitat destruction and fragmentation have become one of the biggest threats to Painted Turtles. As residential areas and cities grow, people begin to move to these newly developed suburbs and so do their cars. Turtles nest on land, meaning they have to leave their pond and find suitable ground to dig into to lay eggs. This often coincides with traveling across roads, leaving these small turtles susceptible to road mortality. After laying a nest, the mother will abandon the nest and continue on with her life, as most reptiles do. This leaves eggs vulnerable and unfortunately are a favourite treat to raccoons, foxes and skunks. Nest predation is a common reason many turtle species see declining populations. If they manage to survive the difficult nesting period, it will take Painted Turtles up to ten years to sexually mature. However, getting to that age is nearly impossible with all of the hazards these turtles face. With so many obstacles to overcome, the Midland Painted Turtle is beginning to disappear and it is the human race that must help this species. We can do this by: stopping our cars for ALL wildlife and helping them cross roadways, encouraging wetland habitat, notifying FOH staff of a nesting female, and adoring wildlife from afar. With the support of all Hullett Users, we can assist this species in becoming protected and aid in reviving their population numbers once again.



Photo Credits: Deb Johnston

Exeter Game Farm

200 Acres of
Hunting Paradise



OPEN YEAR ROUND
7 DAYS A WEEK

**Pheasant, Quail &
Chukar Partridge
Hunting**

Just 2-1/2 miles
west of Exeter on
Huron Street

519-228-6036

www.exetergamefarm.com

Welcome
Hunters!



Kate's Station
RESTAURANT

Come Enjoy Our Hearty

Daily Specials

Breakfast · Lunch · Dinner

Open 7 days a week

www.katesstation.ca

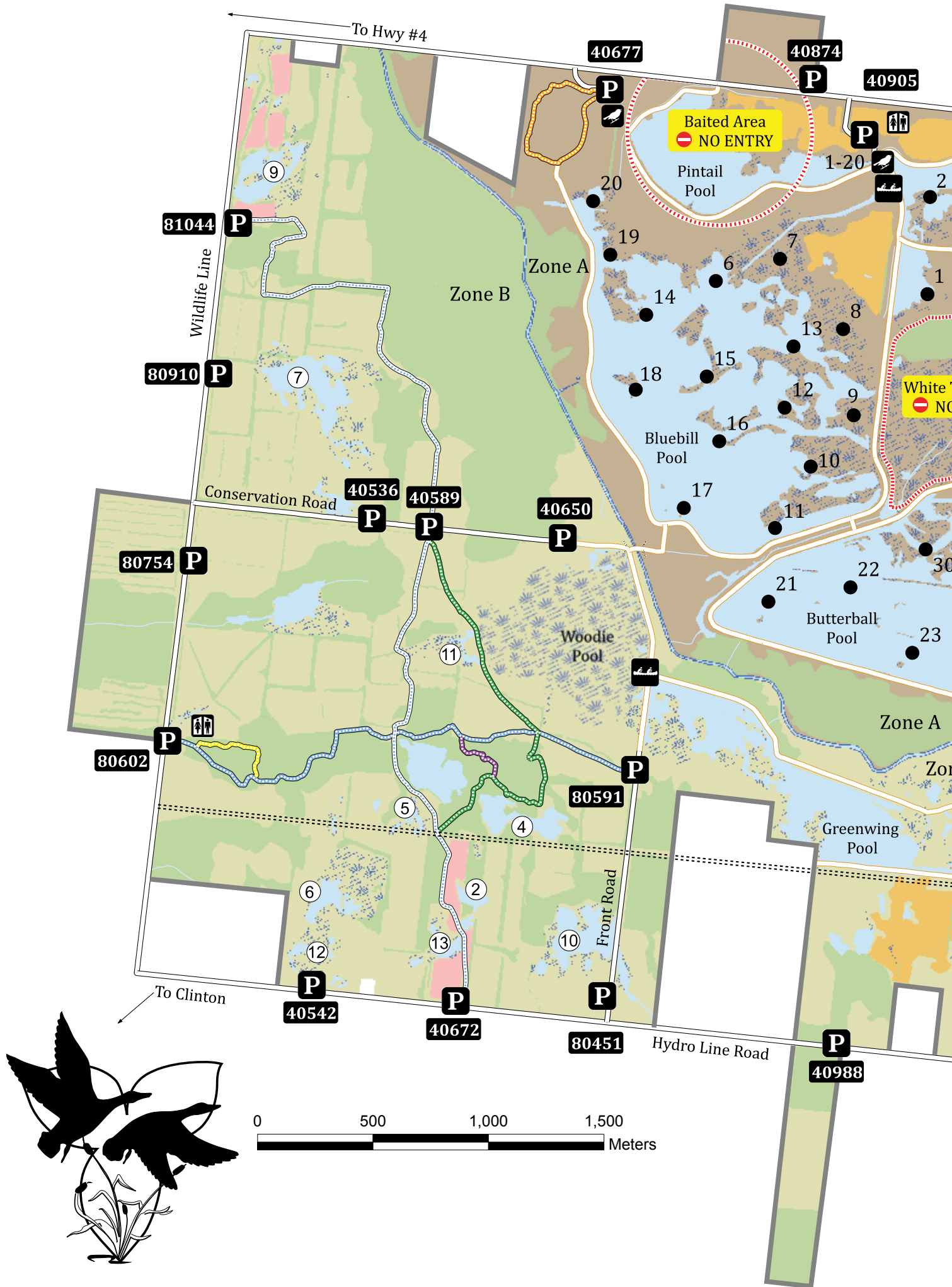
519-233-3222

Corner of Hwy #4 & Vanastra Rd.

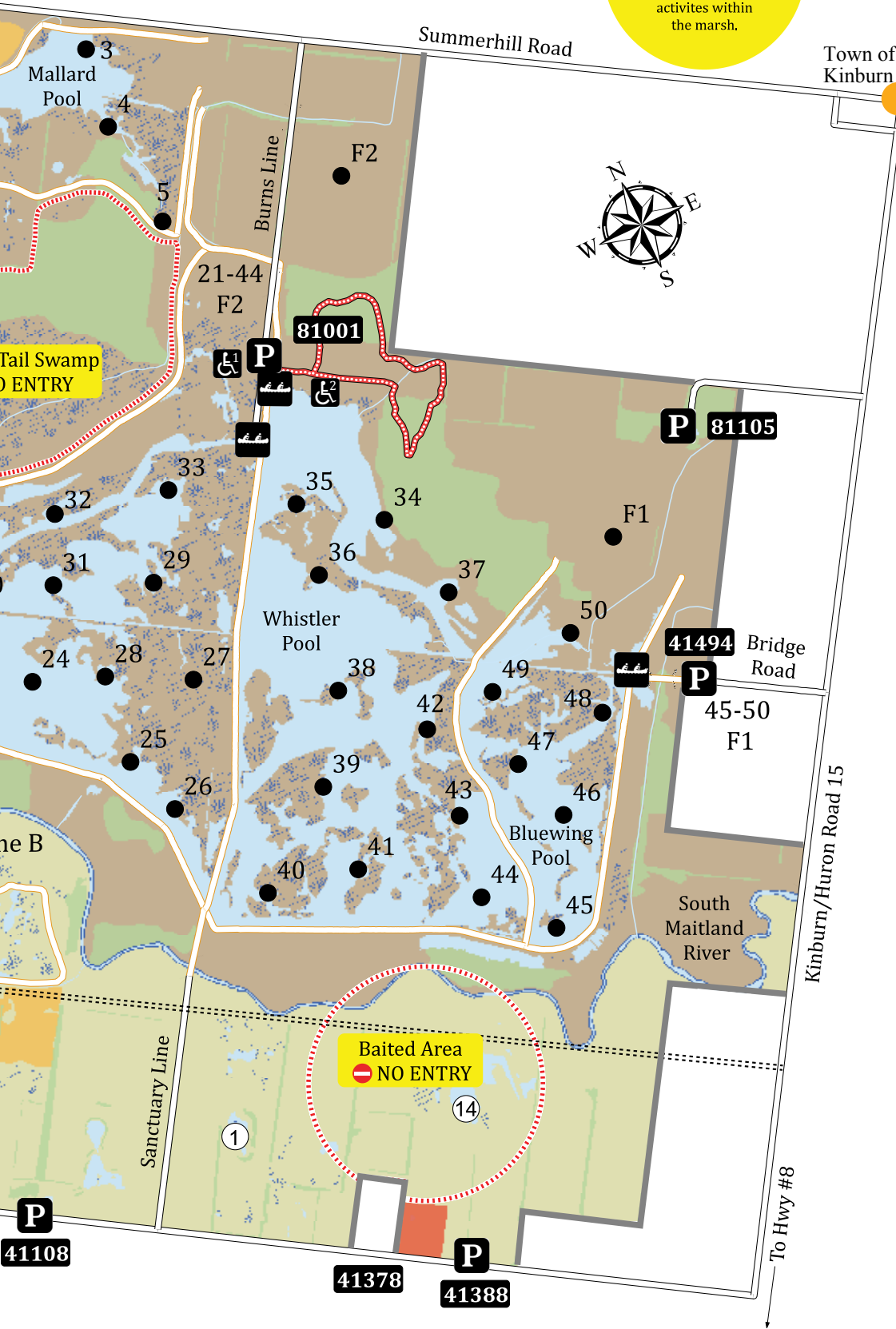
SPECIES	BREEDING CODE	SPRING	SUMMER	FALL	WINTER	OBSERV	SPECIES	BREEDING CODE	SPRING	SUMMER	FALL	WINTER	OBSERV	SPECIES	BREEDING CODE	SPRING	SUMMER	FALL	WINTER	OBSERV
Common Loon	1	C	O	C	R	□	Caspian Tern	0	U	R	U	-	□	Yellow Warbler	3	A	C	C	-	□
Pied-billed Grebe	3	C	C	C	-	□	Forster's Tern	0	U	R	U	-	□	Chestnut-sided Warbler	2	U	R	U	-	□
Double-crested Cormorant	2	C	C	C	R	□	Common Tern	1	O	O	O	-	□	Magnolia Warbler	1	U	-	U	-	□
American Bittern	1	O	O	O	-	□	Black Tern	1	O	O	O	-	□	Yellow-rumped Warbler	3	C	U	C	-	□
Least Bittern	1	R	R	-	-	□	Rock Pigeon	3	C	C	C	C	□	Black-throated Green Warbler	1	R	-	R	-	□
Great Blue Heron	3	A	A	A	R	□	Mourning Dove	3	A	A	A	C	□	Blackburnian Warbler	1	R	-	R	-	□
Great Egret	0	U	U	U	-	□	Black-billed Cuckoo	2	U	O	O	-	□	Black-and-white Warbler	2	U	O	U	-	□
Green Heron	3	C	C	C	-	□	Yellow-billed Cuckoo	1	U	O	U	-	□	Pine Warbler	2	U	O	U	-	□
Black-Crowned Night Heron	1	U	O	O	-	□	Eastern Screech Owl	3	C	C	C	C	□	American Redstart	3	C	C	C	-	□
Trumpeter Swan	0	O	V	O	R	□	Great Horned Owl	3	C	C	C	C	□	Ovenbird	3	U	U	U	-	□
Tundra Swan	0	A	V	C	-	□	Snowy Owl	0	O	-	O	O	□	Northern Waterthrush	2	R	O	R	-	□
Canada Goose	3	A	A	A	C	□	Northern Saw-whet Owl	2	O	O	O	O	□	Louisiana Waterthrush	1	O	-	O	-	□
Wood Duck	3	A	C	A	O	□	Common Nighthawk	3	R	R	R	-	□	Mourning Warbler	1	O	-	O	-	□
Green-winged Teal	3	C	C	C	V	□	Whip-poor-will	0	O	O	O	-	□	Common Yellowthroat	3	C	C	C	-	□
American Black Duck	3	C	U	C	R	□	Chimney Swift	2	U	U	U	-	□	Canada Warbler	2	R	O	R	-	□
Mallard	3	A	A	A	V	□	Ruby-throated Hummingbird	3	O	C	O	-	□	Orange-crowned Warbler	0	R	-	R	-	□
Northern Pintail	1	A	C	C	U	□	Belted Kingfisher	3	C	C	C	V	□	Northern Parula	1	R	-	R	-	□
Blue-winged Teal	3	C	C	C	U	□	Red-headed Woodpecker	2	R	R	R	R	□	Black-throated Blue Warbler	0	U	-	U	-	□
Northern Shoveler	3	C	U	C	-	□	Red-bellied Woodpecker	3	U	U	U	U	□	Cape May Warbler	0	U	-	U	-	□
Gadwall	2	C	R	R	-	□	Yellow-bellied Sapsucker	3	U	U	U	V	□	Palm Warbler	0	C	-	C	-	□
American Wigeon	1	O	R	O	-	□	Downy Woodpecker	3	C	C	C	C	□	Blackpoll Warbler	0	U	-	U	-	□
Canvasback	0	O	V	O	R	□	Hairy Woodpecker	3	C	C	C	C	□	Bay-breasted Warbler	0	C	-	C	-	□
Redhead	0	O	O	O	R	□	Northern Flicker	3	C	C	C	R	□	Wilson's Warbler	0	R	-	R	-	□
Ring-necked Duck	0	C	V	C	-	□	Pileated Woodpecker	2	U	U	U	U	□	Cerulean Warbler	1	O	-	O	-	□
Greater Scaup	0	U	V	U	R	□	Olive-sided Flycatcher	0	U	-	U	-	□	Tennessee Warbler	0	U	-	U	-	□
Lesser Scaup	0	C	U	C	R	□	Least Flycatcher	3	C	C	C	-	□	Connecticut Warbler	0	R	-	R	-	□
Common Goldeneye	1	C	V	C	V	□	Alder Flycatcher	3	C	O	C	-	□	Yellow-breasted Chat	1	O	-	O	-	□
Bufflehead	0	C	O	C	R	□	Eastern Wood Pewee	3	C	U	C	-	□	Hooded Warbler	1	R	-	R	-	□
Hooded Merganser	3	C	C	C	V	□	Willow Flycatcher	3	C	O	C	-	□	Scarlet Tanager	3	C	C	C	-	□
Common Merganser	1	C	U	C	E	□	Eastern Phoebe	3	A	A	A	-	□	Northern Cardinal	3	C	C	C	U	□
Red-breasted Merganser	1	C	O	C	V	□	Great Crested Flycatcher	3	C	C	C	-	□	Rose-breasted Grosbeak	3	C	C	C	-	□
Ruddy Duck	2	U	R	U	V	□	Eastern Kingbird	3	A	A	A	-	□	Indigo Bunting	3	C	C	C	-	□
Turkey Vulture	3	A	A	A	E	□	Loggerhead Shrike	0	O	O	O	R	□	Eastern Towhee	2	C	C	C	-	□
Osprey	2	U	O	U	-	□	Horned Lark	3	U	U	C	C	□	Chipping Sparrow	3	A	A	A	C	□
Bald Eagle	3	C	C	C	R	□	Purple Martin	2	U	U	U	-	□	Field Sparrow	3	A	A	A	R	□
Northern Harrier	2	U	C	U	R	□	Tree Swallow	3	A	A	A	-	□	Vesper Sparrow	3	C	C	C	-	□
Sharp-shinned Hawk	2	U	C	U	R	□	Northern Roughwinged Swallow	3	U	U	U	-	□	Savannah Sparrow	3	C	C	C	-	□
Cooper's Hawk	2	U	C	U	R	□	Bank Swallow	3	C	C	C	-	□	Grasshopper Sparrow	1	U	U	U	-	□
Northern Goshawk	1	R	O	R	R	□	Cliff Swallow	3	C	C	C	-	□	Song Sparrow	3	A	A	A	-	□
Red-tailed Hawk	3	C	C	C	C	□	Barn Swallow	3	U	U	U	-	□	Swamp Sparrow	3	C	C	C	-	□
Red-shouldered Hawk	2	U	O	U	-	□	Blue Jay	3	C	C	C	C	□	White-throated Sparrow	1	O	O	O	-	□
Rough-legged Hawk	0	U	-	U	U	□	American Crow	3	A	C	C	C	□	House Sparrow	3	A	A	A	C	□
Golden Eagle	0	R	-	R	R	□	Black-capped Chickadee	3	A	A	A	A	□	Dark-eyed Junco	0	U	V	U	A	□
American Kestrel	3	C	C	C	C	□	Red-breasted Nuthatch	3	C	C	C	C	□	Snow Bunting	0	C	-	C	C	□
Merlin	0	O	-	R	-	□	White-breasted Nuthatch	3	C	C	C	C	□	Bobolink	3	C	C	C	-	□
Ring-necked Pheasant	2	C	C	C	U	□	Brown Creeper	2	U	U	U	E	□	Red-winged Blackbird	3	A	A	A	-	□
Ruffed Grouse	3	C	C	C	C	□	House Wren	3	A	A	A	-	□	Eastern Meadowlark	3	U	U	U	-	□
Wild Turkey	3	C	C	C	C	□	Winter Wren	1	U	U	U	U	□	Rusty Blackbird	0	U	-	C	O	□
Northern Bobwhite	2	O	O	O	O	□	Marsh Wren	2	O	O	O	-	□	Common Grackle	3	A	A	A	A	□
Virginia Rail	1	O	O	O	V	□	Golden-crowned Kinglet	1	U	U	U	U	□	Brown-headed Cowbird	3	A	A	A	A	□
Sora	2	U	U	U	-	□	Ruby-crowned Kinglet	0	U	R	U	U	□	Baltimore Oriole	3	C	C	C	-	□
Common Gallinule	3	C	C	C	-	□	Blue-gray Gnatcatcher	2	C	C	C	-	□	Purple Finch	1	U	U	U	-	□
American Coot	2	U	U	U	O	□	Eastern Bluebird	3	C	C	C	-	□	House Finch	3	C	C	C	-	□
Sandhill Crane	3	C	C	C	-	□	Veery	3	C	C	C	-	□	Common Redpoll	0	R	V	R	E	□
Black-bellied Plover	0	R	-	U	-	□	Hermit Thrush	1	C	C	C	-	□	American Goldfinch	3	A	A	A	-	□
Semipalmated Plover	0	U	-	U	-	□	Wood Thrush	3	C	C	C	-	□	<div>LEGEND</div> <div>BREEDING CODES</div> <div>0 = NO EVIDENCE OF BREEDING</div> <div>1 = STATUS UNCERTAIN</div> <div>2 = FORMERLY/SPORADICALLY BREEDS</div> <div>3 = BREEDS REGULARLY</div> <div>ABUNDANCE CODES</div> <div>V = ACCIDENTAL VAGRANT</div> <div>O = OCCASIONAL</div> <div>R = RARE</div> <div>U = UNCOMMON</div> <div>C = COMMON</div> <div>E = ERRATIC</div> <div>A = ABUNDANT</div> <div>"-" = NO DATA</div>						
Killdeer	3	C	A	C	-	□	American Robin	3	A	A	A	-	□							
Greater Yellowlegs	1	R	O	C	-	□	Gray Catbird	3	C	C	C	-	□							
Lesser Yellowlegs	0	C	O	C	-	□	Brown Thrasher	3	C	C	C	-	□							
Spotted Sandpiper	3	C	C	C	-	□	Cedar Waxwing	3	C	C	C	-	□							
Upland Sandpiper	2	U	U	U	-	□	Northern Shrike	1	R	-	U	U	□							
Wilson's Snipe	1	O	O	O	-	□	European Starling	3	A	A	A	A	□							
American Woodcock	3	C	C	C	-	□	Yellow-Throated Vireo	1	U	U	U	U	□							
Wilson's Phalarope	1	R	R	R	-	□	Warbling Vireo	3	C	C	C	-	□							
Bonaparte's Gull	0	U	R	U	R	□	Red-eyed Vireo	3	C	C	C	-	□							
Ring-billed Gull	2	C	C	C	U	□	Gold-Winged Warbler	1	O	-	O	-	□							
Herring Gull	2	C	C	C	U	□	Blue-winged Warbler	2	R	R	R	-	□							
Great Black-backed Gull	0	R	R	U	U	□	Nashville Warbler	2	U	R	U	-	□							

This is not a complete list of all migratory birds in Hullett Marsh as vagrant sightings are possible.

BIRDING CHECKLIST



Hullett has been signed in accordance with the Trespass to Property Act. These signs have a yellow circle that is 10cm in diameter. They will refer to prohibited activities within the marsh.



Legend

- Bridge
- Canoe Launch
- Accessible Hunting Stand
- Parking Lot
- Viewing Stand
- Washroom
- 911 Number
- Hunting Stake
- Pond
- Town

Trails

- Blue - 2.3 km
- Green - 2.1 km
- Orange - 1.2 km
- Purple - 0.3 km
- Red - 2.2 km
- White - 4.6 km
- Yellow - 0.4 km

- Dyke
- Powerline
- Road
- Baited Area - NO ENTRY
- Grassland Habitat Restoration
- H.P.W.A. Boundry
- Office Complex
- Tall Grass Prairie
- Private Property
- Water/ Drainage
- Wetland
- Wooded Area
- Zone A
- Zone B

GPS HUNTING STAKES FOR "A" ZONE

Stake	Latitude	Longitude
1	38' 14.071"	27' 24.831"
2	38' 26.261"	27' 16.535"
3	38' 27.917"	26' 56.393"
4	38' 19.104"	26' 58.276"
5	38' 7.066"	26' 56.767"
6	38' 28.097"	28' 0.920"
7	38' 27.145"	27' 47.880"
8	38' 14.493"	27' 42.472"
9	38' 2.900"	27' 47.560"
10	37' 58.675"	27' 58.327"
11	37' 53.13"	28' 10.472"
12	38' 7.493"	27' 58.083"
13	38' 14.646"	27' 52.783"
14	38' 28.423"	28' 16.277"
15	38' 16.454"	28' 10.248"
16	38' 7.463"	28' 13.257"
17	38' 1.030"	28' 24.855"
18	38' 18.937"	28' 23.77"
19	38' 37.632"	28' 17.347"
20	38' 45.474"	28' 16.053"
21	37' 44.107"	28' 17.582"
22	37' 41.124"	28' 2.029"
23	37' 29.153"	27' 56.448"
24	37' 26.804"	27' 44.070"
25	37' 14.197"	27' 35.585"
26	37' 7.435"	27' 32.410"
27	37' 19.569"	27' 21.660"
28	37' 23.962"	27' 33.651"
29	37' 31.176"	27' 20.989"
30	37' 41.579"	27' 45.745"
31	37' 35.528"	27' 35.034"
32	37' 42.646"	27' 30.268"
33	37' 39.797"	27' 13.066"
34	37' 26.811"	26' 45.214"
35	37' 32.473"	26' 56.233"
36	37' 24.299"	26' 57.600"
37	37' 16.553"	26' 40.766"
38	37' 11.801"	27' 2.326"
39	37' 2.790"	27' 10.513"
40	36' 54.694"	27' 24.907"
41	36' 52.902"	27' 10.929"
42	37' 3.769"	26' 52.450"
43	36' 53.619"	26' 53.490"
44	36' 44.405"	26' 55.608"
45	36' 37.843"	26' 47.209"
46	36' 46.808"	26' 37.781"
47	36' 56.094"	26' 42.087"
48	36' 57.352"	26' 27.150"
49	37' 4.238"	26' 40.273"
50	37' 6.848"	26' 26.513"
F1	37' 14.543"	26' 14.47"
F2	38' 3.386"	26' 29.118"

WATERFOWL OPENING DAY FOR DUCKS

Hunters are required to participate in a draw conducted by the FOH and the MNRF (does not apply to early goose season). The purpose of this draw is to ensure an equitable allocation of hunting opportunities and encourage safe hunting for everyone.

The draw takes place the Friday before opening day at noon.

To participate in the draw, waterfowl hunters must park in front of a numbered barrier in parking lot 40874 Summerhill Road, and be present with the vehicle until the time of registration. Registration time begins at 10:00 AM on the Friday morning and the draw is made at 12:00 AM.

The draw determines the order of choice for hunting stakes, not the stake itself.

The first 52 motor vehicles will qualify for the draw (unoccupied vehicles are not eligible).

In the event that all 52 stakes are not taken in the draw, the remaining stakes will be allocated on a first come, first serve basis.

Two people may occupy a hunting stake but only one draw per vehicle will be permitted.

Upon registration, hunters will receive a Hunter Validation/Harvest Card (HV/HC), at which time hunters are to deposit a piece of identification (NOT any licence required to hunt, possess firearms, or operate a vehicle) with the parking lot operator. Identification will be returned to the hunter at the conclusion of the hunt after their daily harvest has been checked. Information collected on birds checked is used for managing waterfowl in Ontario.

The HV/HC MUST be displayed in a manner so that it can be easily seen, preferably on the dash of the vehicle.

Hunting in **ZONE A** After the Opening Day

To provide a fair and equal opportunity to all hunters after opening weekend of waterfowl season, hunters that arrive before 5:00 AM must:

1. Line up in the overflow parking lot (40874 Summerhill Road) on a first come, first serve basis at one of the numbered parking barrier that corresponds to one of 52 hunting stakes.
2. After 5:00 AM, hunters must proceed to the parking lot corresponding with the stake number they have selected to hunt from.

Handicap Accessible Blinds

There are two handicap accessible blinds for your convenience at the Hullett Marsh. Please refer to the accompanying map for locations. Use of these facilities are to be reserved by calling the FOH Office at 519-482-7011 during normal business hours prior to your hunt.

Additional Comments

Trail and channel markers are placed to help you find some stakes. The markers and stake numbers will show up in the beam of a flashlight.

We urge all hunters to scout the area ahead of time and take a compass with you. Many stakes will be almost impossible to find in the dark unless you know the area well. Please refer to GPS data for stakes.

Stakes numbered 1 – 50 are permanent locations. Stakes F1 and F2 are field hunting stakes and are placed after crop harvest.

Wading in unfamiliar waters can be extremely dangerous. Chest waders will be required in most cases. Keep in mind that open water can mean deep water, especially near dykes.

Sky-busting shows poor sportsmanship and results in crippled birds. This is strongly discouraged at Hullett. Know your shotgun and its limitations.

Due to management practices, water levels may fluctuate and shorelines may change.

Some stakes may be closed at the MNRF's discretion during certain periods to restrict hunting activity near waterfowl banding sites and special events such as youth hunts. If done, notices will be posted at the parking space for that stake.

Access to Hunting Stakes

Walk-in (chest waders highly recommended): 1-9, 11, 22, 27, 32, 33, 42, 46, 48-50. The water level within the ponds are actively managed by Ducks Unlimited Canada and the FOH. Access will change from year to year and season to season.

NOTE: Some stakes may be shut down during early goose season for waterfowl leg banding.



Birding Tips for Beginners

By: Tony Latour

Birding or bird-watching is defined by Oxford Dictionary as: "the observation of birds in their natural habitats as a hobby". It is one of the fastest growing leisure activities in Canada and provides many hours of relaxation and enjoyment of the outdoors for all people.

Hullett Marsh is one of the premiere birding areas in Huron County, providing a wide variety of habitat, an extensive trail and dyke system for hiking, and a bird list in excess of 200 species!

Birding can be done with nothing more than your eyes and ears but it can be more enjoyable with binoculars. This will allow you to spot birds from further away and pick out more detail. Also helpful will be a bird identification pocket book or birding app. These apps run on smartphones/tablets and contain the same information found in bird guides while also providing samples of bird calls. Merlin and Audubon each provide free apps that provide a wealth of information for identifying birds in the field including interactive bird identifications for beginner birders. Another helpful technology is the website/app, eBird, which allows people to keep their bird lists online for scientists and other birders to see.

Birds can be found at any time of the year but their numbers increase during migration in the Spring and Fall. Spring migration begins with waterfowl and geese in March, songbirds begin to arrive in April and May, and shorebirds in May and June. Fall migration reverses this process in August to October with shorebirds leaving first. Some birds such as: Snowy Owls, Lapland Longspurs, and Common Redpolls are only seen in Southern Ontario during the winter as they move south from their breeding grounds in the Arctic. It is important to consider the time of day when birding. Most birds are active before and after both dawn and dusk. There are also various species who are nocturnal (active at night) such as owls and nighthawks.

Now that you know the basics, it is important to have a few tips for birding in your pocket:

- Stop and look for movement frequently: notice motion across your entire field of view.
- Further develop your listening skills: begin to recognize sounds that common birds make so you can hear a call that may identify a less common bird, or you may be able to hear a bird before you see it.
- Take in everything around you when identifying a bird: the habitat, the time of year and day, where in the habitat you see it (flying, in grasses, on water).
- Try to develop a profile of the bird: size, colour, shape, posture, flight pattern, sound.
- Do not get frustrated! In the beginning, identifying birds is difficult and you will probably be unable to confidently identify the majority of birds you see, but do not give up!

With time, practice, and experience, birding gets easier and more rewarding. The most important thing is to get out there and have fun!



Hullett Nature Trails

HPWA consists of seven different marked trails with a combined length of over 13 kilometers. All trails are natural paths that explore the various habitats within the area. The level of difficulty is moderate for all trails, with the Yellow and Orange trails being suitable for short hikes and small children. All trail heads are accessible from designated parking lots with new trail head signage marking the start and finish of the trails.

ZONE A

Orange – 1.2 km
Red – 2.2 km

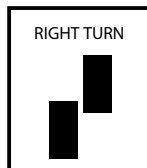
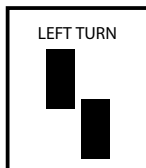
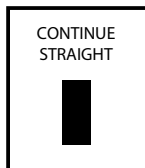
ZONE B

Blue – 2.3 km
Yellow – 0.4 km
Purple – 0.3 km
Green – 2.1 km
White – 4.6 km

DYKE SYSTEM

Our dyke system is also available for hiking. With over 17 km of dykes, you will always have somewhere new to explore!

Our trails have all been colour blazed according to a standardized method used across North America. Two by six-inch rectangular paint blazes can be seen on trees or posts, depending on the habitat. Sharp turns are double blazed.



JORGE PAREJO

NAHUEL PAINTING
& GRAL CONTRACTING
Residential • Commercial
Cottages

P.O. Box 703
Bayfield, ON N0M 1G0

Tel: 519-565-5817
Email: jparejo@tcc.on.ca

Hullett Marsh Waterfowlers Association

This is a volunteer sub-committee within the FOH. The group was formed after many requests from FOH members to organize and carry out dedicated waterfowl related work at the marsh. The HMWA's mandate is to continue to improve the production, attraction, and harvest of waterfowl at Hullett. The HMWA are looking forward to 2018, but first a look at what was accomplished in 2017:

- Water level drawdowns have occurred in the Mallard Pool and Pintail Pool; the Pintail Pool maintains some water, however the Mallard Pool is almost entirely drained of water. When areas of the marsh are drained, different naturally occurring plants are given the chance to germinate, producing seeds that are beneficial to duck populations.
 - The past year has been an exciting time for the various nesting programs that Hullett maintains, especially the duck nesting activities of the Duck Box program and the Mallard Tube program.
 - o The HMWA took the opportunity to move six Mallard Tubes from unsuccessful nesting locations to areas which have shown a higher nesting rate. In the 2017 nesting season, the FOH observed a 21% usage rate within the Mallard Tubes.
 - o Thanks to the dedication of staff and volunteers, the Duck Box program has seen one of its best seasons yet. In the 2017 nesting season, the FOH observed a 52% usage rate within the Duck Boxes. There were a total of 141 boxes in the marsh during the 2017 nesting season, 73 of which were used by ducks.
 - The FOH and HMWA have continued to grow the relationship with Delta Waterfowl. The organization donated 14 new tubes; these tubes are being cared for and monitored along with the current Mallard Tubes at Hullett. Most of these tubes have been placed in the satellite ponds found in Zone B. This donation could not have come at a better time as the HMWA was already attempting to improve and expand the program. Fostering a deeper relationship with Delta Waterfowl is mutually beneficial and we are excited to continue this partnership.
 - Invasive Phragmites/Common reed was sprayed in the summer and fall of 2017 and 2018.
 - Bait will be placed in the North and South baited areas by staff and volunteers throughout the waterfowl season. Access to the baited areas is restricted to the public.
- If you are interested in being a member and volunteering with the HMWA, please contact Scott Austin via email and you will be kept up to date on waterfowl initiatives.**

Message From The Marsh

community involvement are major priorities in the management of the Hullett Provincial Wildlife Area. FOH has been fortunate to hire Greg Urquhart full time as our GIS and Wildlife Technician. Greg's skills and passion have made a big difference in the HPWA in 2018!

2018 Season Highlights

- Hiring of 3 summer students with funding provided by both the provincial and federal governments. With this hiring, we were able to produce additional educational learning experiences for the public: birding hayrides, guided hikes, owl prowls and more!
- 500 tonnes of gravel placed and graded on Hullett roads, agricultural access points and parking lots by the Municipality of Central Huron at no cost to FOH.
- Planning and implementation of the 3rd annual Hullett Marsh Youth Waterfowl Clinic in celebration of Waterfowl Heritage Day.
- Purchase of a new landscaping trailer from Millroad Trailers for \$8,000.
- Phragmites removal, targeting all known sites on the property for another year. Funding has been provided by the Huron County Clean Water Project.
- Expansion of the Mallard Tube program in partnership with Delta Waterfowl.
- Completion of a new accessible concrete privy and holding tank at the main viewing stand at 40905 Summerhill Road costing FOH over \$20,000. Partial funding was provided by the 2017 Central Huron Donation Fund (\$4,000) and the Enabling Accessibility Fund through Employment and Social Development Canada (\$7,000).
- The Central Huron Donation Fund for 2018 funded a new iPad for field work and interpretation (\$960) and partially funded the 2019 User Guides (\$1,640).
- The 5th annual Dinner and Auction was a huge success, raising more than \$13,000!
- 1,000 pheasants will be released this fall and we encourage you to support the Ideal Supply Pheasant Challenge raffle in 2018 to provide funds for the 2019 release. In 2018, the prizes remain the same: a lovely shotgun as the first prize and a generator as the second prize donated once again by Ideal Supply.

Please contact us by email at fohoffice@tcc.on.ca with your ideas, comments and concerns. We would also welcome you as a volunteer!

Scott Austin, Marsh Manager

Hunting at Hullett

Rules & Regulations

The Boundary between **ZONE A** and **ZONE B** is the South Maitland River

ZONE A Migratory Bird Hunting Regulations:

ZONE A is a unit consisting of 1,020 ha (2,520 acres) of land of which 680 ha (1,680 acres) are flooded with shallow open water. The average depth within the five compartments is approximately 50 cm (20 in). Within **ZONE A**, there are 52 hunting stations (stakes) available.

The following regulations apply:

1. To lawfully hunt migratory birds, during their open season, you must park one vehicle in a numbered space in a designated parking lot. The number of your space permits you to hunt at the stake with the same number. Stake locations are shown on the user guide map. Please refer to Waterfowl Hunting Draw Procedure and Stake Selection in **ZONE A** to learn how to get your stake for waterfowl hunting.
2. Hunters must keep their firearms unloaded and encased except while occupying the blind or stake.
3. Only **two people** are permitted at any stake including non-hunters
4. The two people must hunt within 30 metres of the blind or stake that is marked with the same number as the vehicles parking space.
5. Portable blinds may be used. No person shall cut any vegetation nor erect and leave a blind of any fashion.
6. Stake numbers F1 and F2 are field hunting stakes. These stakes will be open for hunting once crops are harvested. Please refer to the hunting page on our website for details.
7. There are two accessible blinds available for your convenience. Please refer to the accompanying map for locations. The use of these blinds are to be reserved by calling the FOH Office at 519-482-7011 prior to your hunt.

ZONE A Small Game Hunting Regulations

It is lawful to hunt small game in **ZONE A** only if the following conditions are adhered to:

1. The season for migratory birds must be closed including mourning doves.
2. The vehicle arrived in must be parked in a designated lot for **ZONE A** but not in a parking space designated for a waterfowl stake.

BIG GAME HUNTING IS NOT PERMITTED IN ZONE A.

ZONE B is South/West of the South Maitland River

ZONE B is a unit consisting of 1,060 ha (2,620 acres). This zone consisted of agriculture fields, meadows, forests, tall grass prairies, marginal woodland, swamps, and ponds.

All game for which there is an open season, and during that open season, may be hunted under the following conditions:

- All hunters must park in one of the designated parking lots and position their vehicle in front of an unnumbered barrier. This parking space permits all hunters in the vehicle to hunt anywhere in **ZONE B**.

Pheasant Hunting

During pheasant season, FOH purchases 1,000 ring-neck pheasants from Upland Pheasantry for the purpose of hunting in **ZONE B** only. Pheasants are released at intervals during the open season and are not scheduled to specific days. FOH staff are not authorized to inform hunters of release locations, dates or times. The birds released are provided without charge to the public but it is highly recommended that hunters support the Friends of Hullett **Pheasant Challenge**. With the purchase of a ticket you are entered into a draw to win a **portable generator** or **Over-Under Shotgun!** 10% of the birds are banded before release and you can win small prizes when you return your birds band. The Pheasant Challenge is sponsored by **Ideal Supply** with our sincere thanks. Tickets are available at local Ideal Supply stores. You may also purchase tickets, by chance, at the Hullett Office Complex and **Clinton Sporting Goods (519-606-3006)**. If you harvest a banded pheasant please contact the Hullett Office to claim your prize at fohoffice@tcc.on.ca or 519-482-7011.

****For addition hunting regulations at Hullett, please visit**
<http://www.hullettmarsh.com/hunting.html>

Hullett Wildlife Area Hunting Regulations

Firearms

All roadways within Hullett are considered maintained. It is illegal to have a loaded firearm within eight (8) meters of a maintained road. **Hunters are not exempt from any federal or provincial laws regarding firearms while hunting in Hullett.**

Hunting

Hunting is not permitted near maintenance buildings, or on neighbouring private land, without the permission of the landowner.

A retriever, waders or canoe will be necessary to ensure retrieval of all birds shot. Hunters are required by the Migratory Birds Convention Act to retrieve downed game.

Hunting is prohibited within 400 metres of waterfowl baiting locations. Bait sites are marked on the user guide map and are signed on the property.

From June 1 to September 1, **hunting is prohibited** on or near the nature trails.

Consult the Hunting Regulations Summary for a more detailed listing of Ontario's Hunting regulations or view the summary online at: www.mnr.gov.on.ca/en/Business/FW/Publication/MNR_E001275P/html



Matt Schultz
Bluewater TAXIDERMISTRY
Professionally Trained WHITETAIL SHOULDER MOUNT SPECIALIST

Matt Schultz
37881 Crystal Springs Road
R.R.1 Varna Ont. N0M 2R0

519-565-2385
matt@bluewatertaxidermy.com
www.bluewatertaxidermy.com



VanDriel EXCAVATING INC.

CLINTON
519-482-3783

A Word from our Conservation Officers

Drew Pegrum and **Deane Waite** are the **Conservation Officers** that patrol the Hullett Provincial Wildlife Area (HPWA) along with Huron and Perth Counties. We are part of the Ontario Ministry of Natural Resources & Forestry in the Enforcement Branch - Guelph Enforcement Unit. If you have any enforcement related questions, feel free to contact either of us, our phone numbers are at the bottom of this article. We hope you have an awesome adventure during your time at this great outdoor learning facility!

The HPWA is a multi-use outdoor recreational based area. The HPWA always seems to have lots of activities going on; with a bit of co-operation and understanding the area can be appreciated by all. Thank you for picking up one of the user guides. Please make sure you read and understand what types of activities are allowed as well as when and where they are allowed.

A large part of our job involves encountering resource users to ensure they are in compliance with the variety of laws that are in place. Remember that these laws are there to protect the fish, wildlife, habitat, environment as well as you and us. We appreciate your adherence to the laws. Should you observe an activity that you believe is not allowed or you know is contrary to the law, we strongly encourage you to pass on your observations.

This can be done by calling our OMNRF Tips line at **1-877-TIPS-MNR (1-877-847-7667)** or if you wish to remain anonymous call Crime Stoppers at **1-800-222-8477**. The important thing is that you call and let someone know, because it is you that can help us to keep the HPWA the really awesome place that it is to visit and share your experiences with others. The majority of the people we encounter are in compliance with the laws and are just out to have a relaxing and enjoyable day in the outdoors. Sometimes we do encounter those that are committing a violation of a law that falls within our mandate. We encourage you to read and understand the resource user guide and if you are involved in hunting we strongly encourage you to review the provincial hunting summary prior to coming to Hullett.

This summary can be found digitally at:
<http://www.ontario.ca/document/ontario-hunting-regulations-summary>

Some of the more common types of activities that we investigate are: illegal hunting of deer; by day and night, hunting non-game birds such as shorebirds or grebes, and having loaded firearms in or on vehicles or roadways. We also encourage those that are shooting at game to ensure they know the limits of the firearm and ammunition that they are using.

All roads within the HPWA are considered to be maintained and therefore it is illegal to have a loaded firearm while on the road or within eight meters of the road. This is a safety hazard and we have no tolerance for this type of activity.

The staff and volunteers have worked very hard to place signage around the area to advise you of acceptable uses and therefore to assist you to have a safe and enjoyable outdoor adventure. Please obey all of the signs, especially the Private Lands and Yellow Dot signs that will indicate what activities are allowed. We have a low tolerance for violations of this type. If you have any questions always ask before you make a mistake. As you are out enjoying your activity in this public land area, you will no doubt encounter other resource users. We hope you take the time to get to know each other as you likely have similar interests in this great outdoor area.

Whether you are on a trail observing wildlife and birds or actively taking part in one of the allowable regulatory harvests, let's all be responsible for helping to safeguard our wonderful natural resources here in Ontario.

Drew Pegrum

Conservation Officer

Bus: 519-482-3667

Cell: 519-766-8158



Ontario Ministry of

Natural Resources and

Forestry

Deane Waite

Conservation Officer

Bus: 519-482-3811

Cell: 519-546-0848

PLEASE REPORT NATURAL RESOURCE VIOLATIONS BY CALLING 1-877-847-7667

You can assist a Conservation Officer by calling our natural resources call line with the following information.

- Nature of the violation (hunting, fishing, species at risk, unlawful harvesting, etc...)
- Vehicle information such as; licence plate, color, make & model of vehicle
- Location of the offence such as civic address or simply where you are in the Hullett
- Specifics about the event that you saw including date, time, persons involved if name known if not descriptions of people

1-877-TIPS-MNR



MAELSTRÖM

Huron County's 1st Winery

Come and enjoy Huron County grown and internationally awarded wines at our tasting room. You may choose to stroll through the nine acres of vineyard, do a tasting at the tasting bar, enjoy a glass of wine on the patio or picnic at your leisure.

Now selling specialty cheeses, spices and jellies.

78925 Sanctuary Line, Huron East
Open daily 11-6 519-233-9463
www.maelstromwinery.ca



PHOTO CONTEST 2019!

We want to see your pictures of Hullett Marsh!

From nature walks to family fun, scenery, wildlife, and hunting shots, Hullett wants to see your best.

1st Place: Free Hullett Membership AND Photo on the cover of the next user guide
2nd-6th: Photos showcased on the cover of the next User Guide

Images must:

- Depict safe practices
- Not contain gore
- Contain the name of the person entering the photo (John_Smith.jpg for example)

Send us your pictures of Hullett Marsh to fohoffice@tcc.on.on

By entering your photos you give Friends of Hullett the rights to use them in media posts, presentations, and public displays (with photo credit)



Hosted by the Huron-Perth Youth Pheasant Hunt Committee

DATE

Saturday, November 17, 2018

LOCATION

Hullett Marsh

Open to apprentice hunters between the ages of 12 and 15

INFORMATION

www.loop-perthhuron.ca

**IF YOU SEE SOMETHING,
SAY SOMETHING.**



Make your world safer,
ANONYMOUSLY.

Crime Stoppers programs across Ontario recognize the significant role that environmental crime plays in society. It is estimated that these crimes represent revenue of over \$40 billion per year worldwide. With low rates of detection and lesser penalties, these crimes are continuing to grow. Local issues include: poaching of reptiles, fish and wildlife, harvesting of endangered species, and dumping waste and contaminates. Crime Stoppers has partnered with organizations such as the MNR, Environment Canada & Climate Change, Wildlife Enforcement, and local Stewardships to bring attention to these crimes. Anyone with information on these illegal activities can contact their local Crime Stoppers.

**HURON COUNTY
CRIME 
STOPPERS**
www.hc-cs.ca
1-800-222-TIPS (8477)

Thank You Hullett Supporters!

Every year Friends of Hullett gets a chance to reminisce about the activities and improvements from the previous year, and this year was one of the best! There are so many people who dedicate hours of their time to assist the marsh with financial, material and volunteer support. The community that surrounds Hullett is what keeps this place thriving. From our membership, the user guide advertisers, community hour students, pheasant challenge participants and donors are all a large part of the success of Hullett Marsh. Our volunteers are extremely dedicated in a variety of ways from physical labour to fundraising and proofing our publications. Each individual volunteer brings a unique set of skills and their help is invaluable for the future of this hidden jewel. There are a number of spectacular sponsorships we must recognize for the support that occurs:

- **The Municipality of Central Huron** is a constant instrumental supporter of Hullett Marsh. From the Central Huron Donation Fund, to the donation of 500 tonnes of gravel for our road ways and parking lots, Hullett Marsh depends on the support from this amazing Municipality.
- A huge thank you goes to **Hill & Hill Farms**, and **Varna Grain** for their donation of corn for our baited areas.
- **Tim MacDonald** of **Ideal Supply** is constantly donating tools, supplies, safety equipment and of course the donation of the generator prize for the Pheasant Challenge.
- Also, thank you to the **Bluewater Golf Course** for hosting the 5th annual Charity Dinner and Auction. A special thank you to **Chef Devin Tabor** of **Bon Vivant Catering** for the delicious meal!
- Thank you to the Board of Directors for volunteering time out of their busy schedules to keep this place running and in order.

Hullett Marsh would not run without the help from all volunteers and members! Thank you all so much! Visit us today at www.hullettmarsh.com, by liking us on Facebook @Hullett Marsh, or follow us on Instagram @Hullett_Marsh. Be the first to know about new events and join in the fun with our weekly Trivia Tuesdays.

Help maintain the marsh! Become a member for only \$25 per year!

If you want to become a member, you have three options!

1. Cut out and mail the right side of this page to:

Friends of Hullett

PO Box 1520, Clinton, ON, N0M 1L0

2. Email us at: fohoffice@tcc.on.ca
3. Go to our website and pay with **PAYPAL!**
www.hullettmarsh.com/contact_us.html

Memberships includes emailed newsletters, a vehicle decal, voting rights at the AGM and income tax receipts (\$25 donation or over).

Payment options: INTERAC e-transfers, cheques, debit/credit in the office and PAYPAL!

MEMBERSHIP & REGISTRATION FORM

Name: _____

Full Address: _____

Email: _____

Phone: _____

Are you a ☐ hunter or ☐ non-hunter?

Prefer to hunt: _____

Would you be interested in volunteering?

☐ Yes ☐ No

What is your favourite activity at Hullett?

Comments: _____

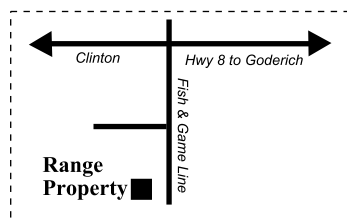
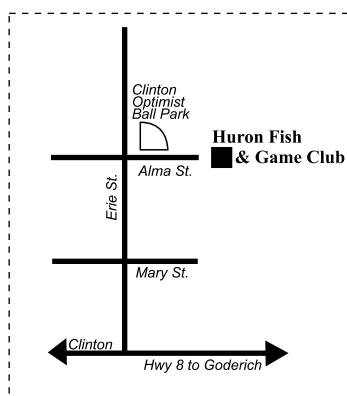




Proud to be an active part of our Community

*your local partners in wildlife conservation,
the Huron Fish and Game Conservation Club, Clinton.*

About the Huron Fish and Game...



Club was chartered in 1940, with a current membership of over 600.



3D Archery Course open Spring and Summer



•Member of the Ontario Federation of Anglers and Hunters, we also maintain a close relationship with



We have Spring, Summer and Winter sporting clay range. Open at 10am on Saturdays.

•Canadian Wildlife Federation

•Ducks Unlimited Canada

•Huron Perth Wild Turkey Association

•Ausable-Bayfield Conservation Authority



The club makes many donations annually, mainly to local groups in and around Clinton.



The club maintains a close association with the Town of Clinton, providing use of Club owned land at the corner of Alma & Erie Streets as a ball diamond for local youth.



The club owns an 80 acre farm located on Fish and Game Line acquired from the estate of a charter member.



100 yard and 200 yard rifle range available



Clubhouse Hours:

Monday-Wednesday - 4pm-10pm Thursday - 4pm-11pm

Friday and Saturday - Noon til Midnight

Sunday - 1pm - 7pm

Be sure to join us for our Wing Nights and our Fish Dinners

Mark your calendars for: WINGS the 1st Friday of the month and FISH the 3rd Friday of the month

Our Clubhouse is available to rent for your next party.
Perfect for crowds too big for home.
Birthdays, Anniversaries, Graduations, even Weddings
Full kitchen or catering available

For membership information:

huronfishandgame.com or 519-482-3022



IdealSupply

Pheasant Challenge

at Hullett Provincial Wildlife Area

From Opening Day to the End of Pheasant Hunting Season

ENTRY COST \$10.00

Tickets available at Hullett
Office or Goderich, Wingham,
St Marys, Exeter, Stratford &
Mitchell Ideal Supply locations

*Receive a
Camo Hat
for Every
Band
Returned*

INAPA
AUTO PARTS



**GUNS, AMMO, HUNTING ACCESSORIES,
RELOADING SUPPLIES, CROSSBOWS, SCOPES,
WORMS, SPAWN, RODS AND REELS**



10 HURON STREET CLINTON, ON N0M 1L0

519-606-3006

www.clintonssporting.com