

FINISHING AID

The only way to cure your concrete.

- Protec III: Chem RX finishes the concrete by naturally going into the surface, creating a cooling gel that stabilizes the finish while creating longer workability and cream on the concrete surface.
- Works great in high wind, high temperature conditions.
- Brings out the cream of the concrete, allowing the concrete to close, while also “setting” the surface, protecting it from unexpected rain or weather conditions, compared to white cure.
- Protec III: Chem RX keeps the internal pad temperature 2* cooler than water cure.
- * Allows the concrete to breathe while also densifying the surface.
- * VOC Free, LEED and Food Safe.
- Have worry free confidence in conditions outside your control.
- * Greater workability, with up to 92% moisture retention.
- * Extends the life of the concrete pad.
- * Keeps the workability high, while chemically reacting with the weak bonds of the concrete and chemically turning them into strong bonds.
- * Protec III: Chem RX is a Finishing Aid, Cure and Densifer.
- * Pre-cast bridge decks and barriers greatly benefit while using Protec III: Chem RX as a finishing aid/cure. Will not interfere with adhesion or penetration of silane siloxane.



- Virtually eliminates plastic shrinkage cracks which are due to improper curing.
- Increases resistance to freeze/thaw damage.
- Strengthen the concrete bonds as where other surface retarders destroy the concrete bonds in order to slow the surface from setting.

A FINISHING AID THAT CURES YOUR CONCRETE

Increase the workability time, brings up the cream and closes up the surface!

Application of Finishing Aid

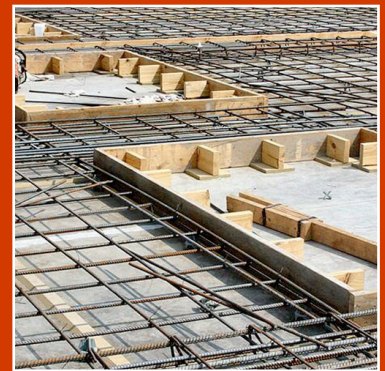
Power Trowel and Broom Finish Concrete

Apply Protec III: Chem Rx to concrete at approx 400 Sq/ft per gallon as the concrete is being finished, once applied, trowel or bull float into the concrete surface as a treatment to the entire surface creating a consistent and quality finish.

A sprayer is recommended with a .5 gpm tip. Do not dilute product.

Additional spot treatments can be applied and worked into the concrete surface as needed.

A benefit when applied across the entire concrete surface is the resulting cure that Protec III: Chem Rx provides without the additional product or labour costs associated.



The Ultimate
CONCRETE
RESCUE



FINISH STRONG

Protec III: Chem RX works by going into the concrete substrate and creating gels within the surface that keep the concrete 2* cooler. while also creating a smooth cream on the concrete surface.

This cream makes the concrete easy to finish, easy to rework and will also cure the concrete.

Protecting the concrete from spalling, popping, crazing and weather and freeze/thaw damage.