



# The WITNESS

St. Stephen's Episcopal Church, Troy, Michigan 48098

February 2017

Mother Susan's  
Musings

## Planning to Wait



Life is all about change and growth. People come and people go. Life changes, our jobs change, our families change, our children grow, but what always remains the same is that all of us are part of God's family.

Here is where we journey together and know one another. Here is where we laugh and cry together. Here is where we celebrate and mourn together. *Here is where we are known by the One who "created us and through whom we have our being."* Here is where we are always welcome.



Chinese symbol for love

If you knew you were in for a several-hour wait, perhaps an airport layover between legs of a long journey, you'd bring along something to help pass the time, right? Traveling when the girls were little, we packed games, books, crayons, paper, a soft blanket and other appropriate accessories for waiting. Once, on our way home from a vacation, we were randomly selected by the TSA for their extra-thorough airport screening.

We're about as white as can be, so I think it truly was random! TSA rules said they had to search the whole traveling party. So... out came everything we'd packed into their little backpacks, books, toys, blankets; plus the accumulated crumbs of our vacation, used tissues, broken crayons, coins and candies that had fallen to the bottom of the bag. Embarrassing! And pretty gross. Good thing they put on latex gloves.

It was messy but clean as far as the TSA was concerned. And as anyone else could have seen, we were prepared for long waits. These days, just an iPhone covers most of our interests, in a lot less space! Still, don't forget the ear-buds, the charging cord, an extra power source... and maybe an actual book.

By the end of this month, I hope you'll have made some plans for the waiting we call Lent. What are we waiting for? *Easter*, is the church's answer. *Springtime*, might be another. *Vacation!*, might be on your list. *Coming back to Michigan*, some of you will answer from warmer climates.

Whatever sort of wait you are facing, be sure to engage it well. Some helpful resources and prayerful opportunities will be available here at St. Stephen's. Even books, art supplies and snacks! (None should worry the TSA, if you happen to take a flight mid-

way through.) The book that accompanies our series in March, "Catching Fire, Becoming Flame" might be particularly good to bring on long waits, as you can practice quietly what you've just learned. *No actual flames required.*

In the midst of enjoying our spiritual waiting-times, don't forget those who are waiting for justice, food, shelter or asylum. Whenever Jesus came down from his quiet prayer-times, he got to work healing, teaching and feeding those in need. He criticized the political and religious systems of his day, the entrenched conditions of inequality and division that kept some people "in" and shut more people "out."

"Blessed are the peacemakers," he insisted. "Blessed are those who hunger and thirst for righteousness." (Matthew 5) Lent should also prepare us for the end of waiting, the rest that follows work, and the joy of transforming this world into the sort of kingdom that God intends for everyone.

Pack well, our Lenten journey starts March 1<sup>st</sup>.

Your fellow traveler,





# Around the Parish

## February Lectionary

### Feb 5 Epiphany 5

Isaiah 58: 1-9, (9b-12)  
Psalm 112:1-9, (10)  
1 Cor 2: 1-12, (13-16)  
Matt 5: 13-20

### Feb 12—Epiphany 6

Deut 30: 15-20  
Psalm 119: 1-8  
1 Cor 3: 1-9  
Matt 5: 21-37

### Feb 19—Epiphany 7

Lev 19: 1-2, 9-8  
Psalm 119: 33-44  
1 Cor 3: 10-11, 16-23  
Matt 5: 38-48

### Feb 26: Epiphany 8

Ex 24: 12-18  
Psalm 2  
or  
Psalm 99  
2 Peter 1: 16-21  
Matt 17: 1-9

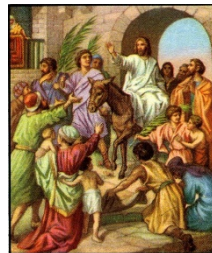
## Seeking the Sacred

**P**lan on a Lenten experience at the Detroit Institute of Arts on **Saturday, March 11.**

The complimentary docent-guided tour of sacred art appropriate for the Lenten season begins at 10:30 a.m. Enjoy lunch at the Cafe DIA at your own expense following the tour.

Join your fellow parishioners in a car pool from St. Stephen's at 9:45 a.m. Note that there is a \$7.00 charge per car at the parking lot located behind the museum. Sign up in the gathering area for a time of appreciation and wonder during our Lenten journey.

Contact Kathryn Hassel or Norma Ross for more information.



rossmail@comcast.net

## Volunteers Needed

**V**olunteers are needed weekly for 1) Thursday morning bulletin stuffing, hymn boards and church cleanup (1 hour), 2) Watering and fertilizing plants in the Gathering Area (15 minutes), 3) EM for the Saturday 4:30 pm service (1 hour).

We are sad to say that our dear friends and faithful parishioners Robert & Lynette Cline (who have helped with these tasks) are moving to Indiana. We thank them for their dedication to St. Stephen's and wish them happiness in their new home.

Alice Brandon continues to help weekly and could use a couple of assistants. Please contact the church office if you are interested and available beginning in March.

Cathy Hoffman  
Parish Administrator

**YACYM**  
**COMMITTEE MEETING SUNDAY, FEB 12 AT**  
**8:30AM**  
*(ONE WEEK EARLIER THAN OUR USUAL 3<sup>RD</sup> SUNDAY MONTHLY MEETING)*  
**NEW MEMBERS WELCOME!**



# Church Notes

## Scouting Sunday

Paul Hardy will be organizing a Scouting Sunday service again this Winter. This day will be February 19. We are inviting all current and former Boy and Girl Scouts to come in uniform, if they wish. We will also do coffee hour (of course there will be Girl Scout Cookies!)



Katy Allen  
Clerk of the  
Vesty

## YACYM Ministry for 2017

The Young Adults, Children, and Youth Ministry at St. Stephen's is considered by many to be central to our success in our overall ministry as a parish. Some would even say it is an indicator of our future survival. Regardless, families with children come to our parish expecting and receiving a welcoming, safe, and enriching environment for their kids and continuing to provide this is essential.

The percentage of our parish community that is active as youth and leaders in this ministry is quite significant. On any given Sunday there are about 90 people at the 10am service and about 30 of those are kids in the program and their leaders. Wow. One-third.

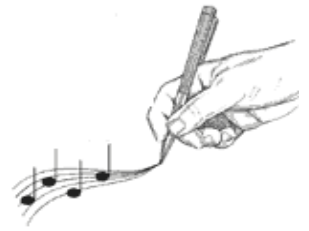
That's a big deal and our parish family shows that. The program is well funded by both the operating budget and the contributions that are lovingly provided throughout the year.

We have a real need, however, that is not being as well supported as our finances. We need teachers, leaders, and new active members for our YACYM committee. Our teachers are younger and older, men and women, cradle Episcopalians and not-so-much. Some are good with crafts and some not-so-much. Some are knowledgeable about the Bible and some not-so-much. Some are or were parents and some aren't and weren't. You get the idea.

We need to provide 2 teachers for each class and we need youth leaders (Rite 13, J2A, YAC) to be one male and one female. This goal has been achieved with one exception this year, which is the YAC group. Scott Armstrong is the only leader for that group. This means we need a minimum of 12 classroom teachers (currently we have 12 if you include me) which is 20% of the remaining adults after you take the kids out of the 10am service.

It's a lot to ask of a parish our size to staff a strong YACYM program with volunteers. I get it. But we just *have* to do this. Right? So please take a little time to pray about your gifts and how you are called by God to answer our mission as a parish family. Many people have helped and been there and done it, but that's not really the point. This ministry is vital, so if you feel you could help, whether it be now or in the next school year, please contact me.

Director of Christian Formation



## One Voice

Please join a remarkable group—the St. Stephen's Choir.

As we look for a permanent replacement for our choir director, come on Thursdays and join the singing!



# From the Back Pew

## Painting Your Prayers

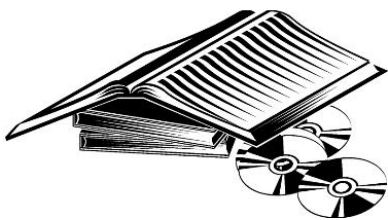
**H**ave you tried getting hands-on with your prayers? Join Mo. Susan for a weekly workshop called "Painted Prayer," in Lent. On Monday afternoons from 1-4 pm, beginning Feb. 27, come to the parish hall wearing your painting/crafting clothes, or bring an apron. Susan will suggest a theme based on the Lenten collect or Gospel, starting with "Dust thou art" on Feb. 27.

You'll take home a visual help or reminder for your Lenten spiritual discipline. Art supplies provided (a donation helps keep them stocked), and/or bring your own. All are welcome, Monday afternoons Feb. 27 through April 10.

## Annual Meeting and More

**K**eep in mind that the Annual Report is available on the "Information" page of our wonderful website and that a recording of the Rector's Report is also available on the "Listen to Sermons" page.

Of course there are many other useful and informative items available on our website as well including a calendar with all the latest info. It's great to check that out to see when a meeting is happening, what events are going on this weekend, or just generally find out what's coming up...  
[www.ststephenstroy.org](http://www.ststephenstroy.org)



## Like Good Food?

**M**ost of us do, so St. Stephen's has a program to make it happen -- GEM (Greet, Eat & Meet). Be part of the fun! Make new friends and strengthen old bonds. Joining and participating is "a piece of cake" [and an appetizer, salad and entrée too!]

GEM is a social gathering where you share a meal and fellowship with 6 or 8 others. Participants are assigned to groups of 3 pairs, and the host may invite two others to fill out the group to 8 for each dining experience. Most do dinners, but there is no rule against lunch or breakfast. Each pair hosts once during the year.

Historically married couples participated, but no more. We are open to others who might wish to sign up as a pair, or singles just sign up and we will pair you. You might know some folks in your group; some perhaps only by sight. In either event, you will get to know them better, and trust us, our congregation is filled with amazing, fun and interesting people [even if they don't think so themselves].

The expectation is that each group will get together 3 times during the year as suits their calendars. The host provides the main course, and each of the other pairs brings an appetizer, salad or dessert (or something that fits with the main course.) It is not a cooking contest. The main course can be anything from hot dogs in the microwave to steak. The food is the pretext for getting folks together in a friendly setting. Not a cook? Pick up 2 rotisserie chickens at Kroger and we'll call it good.

Singles have a GEM group, but why deprive yourselves? Join both. Experience shows that everyone is interesting and enjoys socializing regardless of their household status.

Life is about memories and connecting with people who care. Build both through GEM. If you have any questions, please see or call us. Sign up in the Gathering Area, or let us know.

Bon Appétit,

Jackie and Don Ingersoll (248 879 0948)

one World



# Inside the Parish Walls

## Hats Off!

**M**y head is lighter and my neck less tired. I've shed some hats and I no longer have strips on my sleeves. I'm a civilian again after my swan song as Senior Warden at the Parish Meeting.

But let me be clear, that is not a step down in importance in this Household of God. God loves us all, and we all share the responsibility for doing His work on earth. And His work includes caring for St. Stephen's and each other.

I'm going to keep on caring about St. Stephen's and all of you; and I will continue to wear several hats because that what Christians and parishioners are called to do. It adds life to our years and years to our lives. I'm confident that whether we have stripes on our sleeves or are "civilians," together we will find ways to continue serving God and each other; and that by doing so we will continue to be blessed.

Thank you all for your support during my tenure as Senior Warden, and for your caring support of each other.

Sincerely,  
*Don Ingersoll,*  
Civilian

February 2017						
S	M	T	W	T	F	S
			1	2	3	4
5	6	7	8	9	10	11
12	13	14	15	16	17	18
19	20	21	22	23	24	25
26	27	28				

Please check the website for the most up-to-date calendar of events  
[www.ststephenstroy.org](http://www.ststephenstroy.org)

## Lenten Evenings Begin March 8

**P**lease mark your calendars for the five Wednesdays between Ash Wednesday and Holy Week, and plan to join us for Soup Supper at Six and then a DVD-and-discussion series called "Catching Fire, Becoming Flame." Led by a Franciscan monk named Fr. Albert (say that the French way), we will learn and practice five tried-and-proven methods of inviting God further into our lives, allowing the Holy Spirit to work transformation within us. Fr. Albert's accompanying book (optional purchase, \$15) will enhance your experience.

Please sign up in the Gathering Area to attend, and if possible, join a team to serve Soup Supper on one of the nights. Dates for the series are March 8, 15, 22, 29 and April 5; 6:15 dinner, 7:00-8:30 program.

## Inquirer's Class

**A**re you new to St. Stephen's, realizing there are mysterious terms Episcopalians all seem to know, but you don't? Have you been with us for a while but never asked? Hey, what does the word "Episcopal" mean anyway? And why do some people bow or make the sign of the cross during worship? Why do we pray for churches in the Dominican Republic and an Archbishop in England? How do I get confirmed into the big family called Anglicans?

These and many other questions will be answered for you during an "Inquirers Class" coming in February. Join our Rector at 11:30 am in the Bishop Emrich Library, Sundays, February 12th and 19th. We'll provide food and additional childcare if you need it and be done at 12:30.

The series concludes with our parish Mardi Gras Pancake Brunch on February 25th. RSVP in the gathering area or to Mother Susan.

# One Family

## Bible Study

For all who are interested in weekly Bible Study, the "no experience necessary" bible study is held in the Bishop Emrich lounge, each Wednesday at 10 am. Newcomers are always welcome! Join Mother Susan each week and explore!



# More Inside the Parish Walls

## February Birthdays

### What's with the Gallbladders?

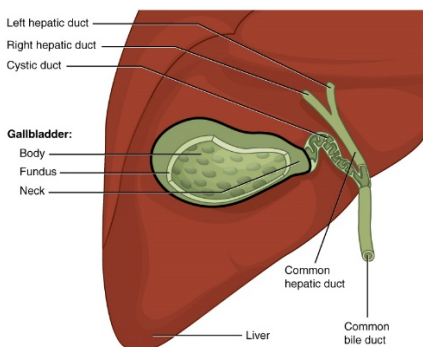
Since my own gallbladder's emergency removal on Christmas Eve, at least three other people known to me and many of you, have had theirs out (a cholecystectomy), too! [The club now includes Bob Hoffman; Betty Feighner the sister of Bob Brokenshire; and Rick Schulte on diocesan staff.] Others of you have already had this procedure and kindly expressed your sympathy. What's with this temperamental, non-essential organ?

In every web-based drawing, the gallbladder is green and pear-shaped. Is it really green? I didn't get to see mine afterwards! It is connected to and sits tucked underneath the liver, helping this major and very essential organ send bile into the intestine, to break down the fatty foods we love to eat. The liver can also do the job on its own, rendering the gallbladder non-essential.

The American diet is the main reason we're losing our gallbladders. Excess cholesterol or bilirubin can cause solid "stones" to develop in there and block the bile. (Probably that's why a pizza dinner sent mine into its final crisis.) Many other animal species have gallbladders; some do not, such as rats - perhaps because they also have a fondness for pizza, but can't seem to get a good surgeon.

*Susan*

(with credit to Wikipedia and WebMD.)



Steve Fragnoli .....	1
Anne Miller .....	2
Christina Elder .....	2
Frances Hammond....	3
Gary Abitheira.....	3
William Waun .....	4
Katelyn Gerard .....	4
Kathy Sebrovski .....	6
Jacquelyn Parent.....	8
Silvia Karlsson.....	9
Amy Church .....	10
Thomas Hyland .....	12
JJ Podsiadlik.....	12
Jan Eldon.....	13
Laura Terlecky.....	13
Melissa Heberling ..	15
Carolyn Ward .....	16
Meghan Brokenshire	18
Kassidy O'Neill.....	16
Helen Slater .....	17
Sheryl Schmidt .....	17
Colin Davis.....	19
Matthew Neumann..	22
Mackenzie Hardy ...	23
Debbie Barry.....	24
Katie Sobolewski....	24
Jerlyn Burrell .....	25
Gillian Terlecky.....	25
Mary Lou Bryson ....	28
Kathleen Herderich	28
John Pincura.....	28
Andrew Gerard.....	28

# We Ask Your Prayers for...

---

## Prayer Concerns

Ron Converse  
Thelma DePew  
Cathlynn Duncan  
Betty Feighner  
Gary Feighner  
Ron Gural  
Charmel Maki  
Betsy McLachlan  
Larry Nunn  
Zoey Rose  
Charles Saylor  
Joe Simler  
Joyce Vance  
Penny Vannelli  
Tom Vida  
Ken Williams  
Kyle J  
Beth L

## Those in the Armed Services

Stephen Armstrong—nephew of Linda Pierce  
Rachel Barton—granddaughter of Jane Frank  
Benjamin Church—great nephew of Ed & Elaine Church  
Brandon Church—nephew of Amy Church  
Kyle Church—great nephew of Ed & Elaine Church  
Nathan Cremeans—grandson of Barb Whitaker  
Tom Fydrych—known to Rob Redmer  
Stephanie Herderich—member of St. Stephen's  
Ian L'Hommedieu—godson of Linda Pierce  
Stephen L'Hommedieu—godson of Linda Pierce  
Kyle Rogowski—nephew of Ken & Kris Fuhr  
Jim Sands—grandson of Sharon Sands  
Clayton Ulrich—nephew of Jeralyn Burrell

We constantly review and renew the lists for prayers. Please call the church office, or e-mail us at [office@ststephenstroy.org](mailto:office@ststephenstroy.org), to ask that a relative or friend be added to those in need of our church's prayers.

## These Parish Families

---

2/5 Ken & Kris Fuhr  
Daniel, Tammy, Katelyn, Andrew, Brendan  
& Emily Gerard  
2/12 Marilyn Gilbert  
Alan, Helen, Kristin & Michael Giles  
2/19 Liz Golding  
Suzanne Gore  
2/26 Ruth & Peter Goulding  
Bonnie & Adrian Gross

## The Departed

---

Patty Genheimer  
*Friend of Connie Jose & Nancy Papet*  
Sally Ottenhoff  
*Granddaughter of Pauline Ottenhoff*  
Larry Pielack



## February Anniversaries

---

Don & Jackie  
Ingersoll .....3  
John & Miranda  
Spates .....3  
John Lynch & Anne  
Heimstra .....19  
Paul & Judy  
McClendon .....21  
Jim & Barbara  
Whitaker .....27

## How to Contact Us

---

**Church Office:** (Open 9:30-1:30 weekdays)

Tel: 248-641-8080 Fax: 248-641-8067

Cathy Hoffman, Parish Administrator/Accountant  
[office@ststephenstroy.org](mailto:office@ststephenstroy.org)

**The Rev. Susan Anslow Williams—Rector**

Cell: 716-397-0997 (voice or text)

Home: 248-732-7955

[rector@ststephenstroy.org](mailto:rector@ststephenstroy.org)

**The Rev. Jim Maxwell, Retired Priest in Residence**

[jimmardi@wowway.com](mailto:jimmardi@wowway.com)

**Connie Jose—Interim Music Director**

[musicdirector@ststephenstroy.org](mailto:musicdirector@ststephenstroy.org)

**Ken Fuhr—Director of Christian Formation**

[formation@ststephenstroy.org](mailto:formation@ststephenstroy.org)

**Jim Trask, Treasurer**

**Cathy Hoffman, Assistant to the Treasurer**

[treasurer@ststephenstroy.org](mailto:treasurer@ststephenstroy.org)

**Church Website: Ken Fuhr, Webmaster**

[www.ststephenstroy.org](http://www.ststephenstroy.org) (password: coffeeshour)

**The Witness, Liz Sinkovich, Editor**

[witness@ststephenstroy.org](mailto:witness@ststephenstroy.org)

E-mail, bring to church or fax: 248-641-8067

## Weekly Services:

---

Sat. 4:30 p.m.

Informal Service

Sun., 8 a.m.

Early Eucharist

Sun, 10 a.m.

Eucharist with Music, Nursery and Sunday School

If you have e-mail, you can receive our newsletter faster! Please send your e-mail address to [office@ststephenstroy.org](mailto:office@ststephenstroy.org). Thank you in advance for helping us with our continued effort to....THINK GREEN!

## St. Stephen's Episcopal Church

---

5500 North Adams Road

Troy, MI 48098

Please remember St. Stephen's in your will

*Change Service Requested*

Dated Material

**FEBRUARY 2017**